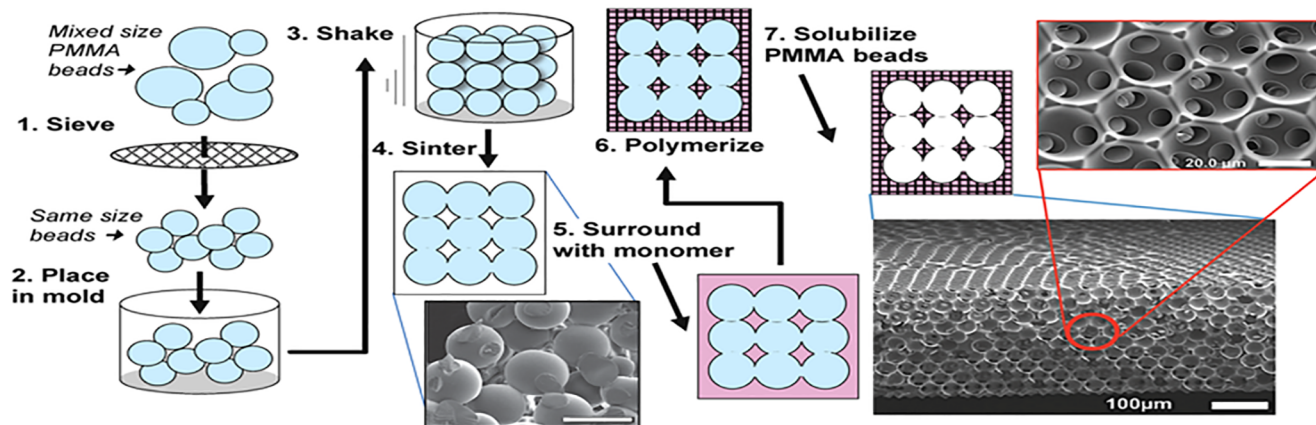
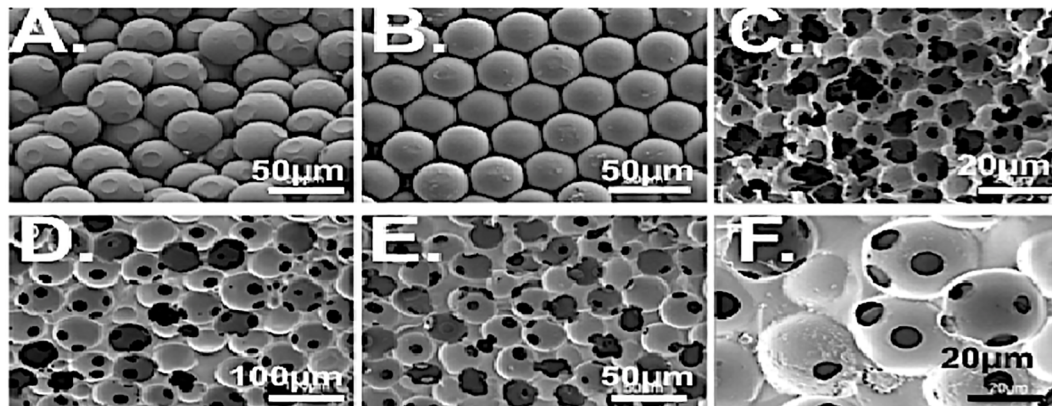


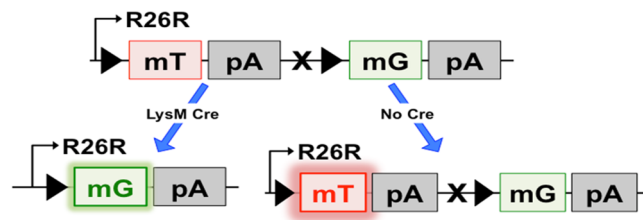
(a)



(b)



	Pore Size (μm)	Throat Size (μm)	Ratio (%)
Small	18.25 ± 0.36	5.45 ± 0.52	29.9 ± 2.9
Medium	38.75 ± 0.75	14.97 ± 0.75	38.6 ± 1.94
Large	92.10 ± 3.21	29.66 ± 1.46	32.2 ± 1.58

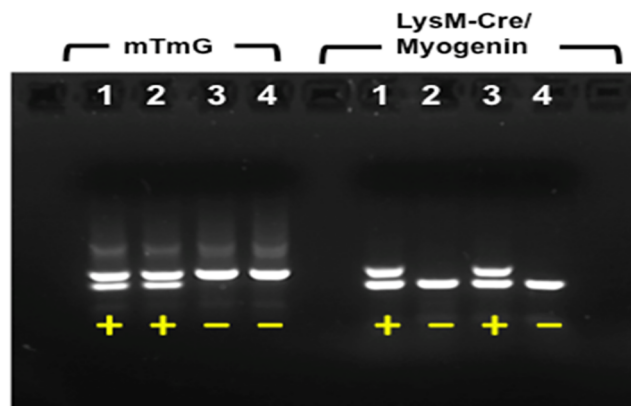


mTmG Genotyping Primers

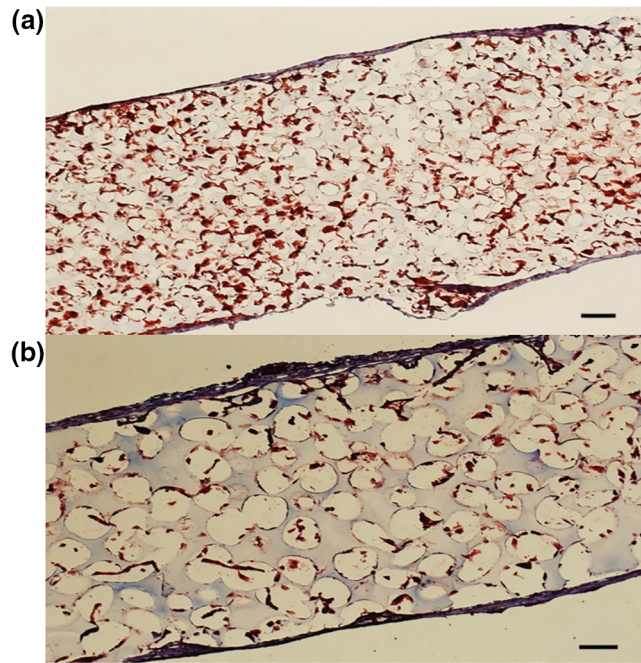
1. 5' CTC TGC TGC CTC CTG GCT TCT 3'
Homozygous: 250bp product
2. 5' CGA GGC GGA TCA CAA GCA ATA 3'
Heterozygous = 250, 330bp products
3. 5' TCAATG GGC GGG GGT CGT T 3'
Wildtype: 330bp product

LysM-Cre Genotyping Primer Pairs

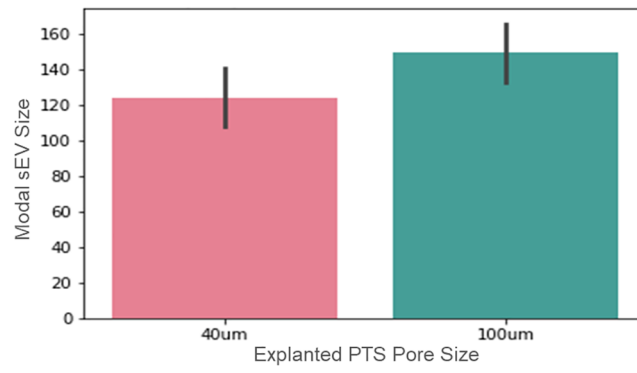
1. 5' GAA CCT GAT GGA CAT GTT CAG G 3'
5' AGT GCG TTC GAA CGC TAG AGC CTG T 3'
Cre: 350bp product
2. 5' TTA CGT CCA TCG TGG ACA GC 3'
5' TGG GCT GGG TGT TAG CCT TA 3'
Myogenin: 250bp product (control)



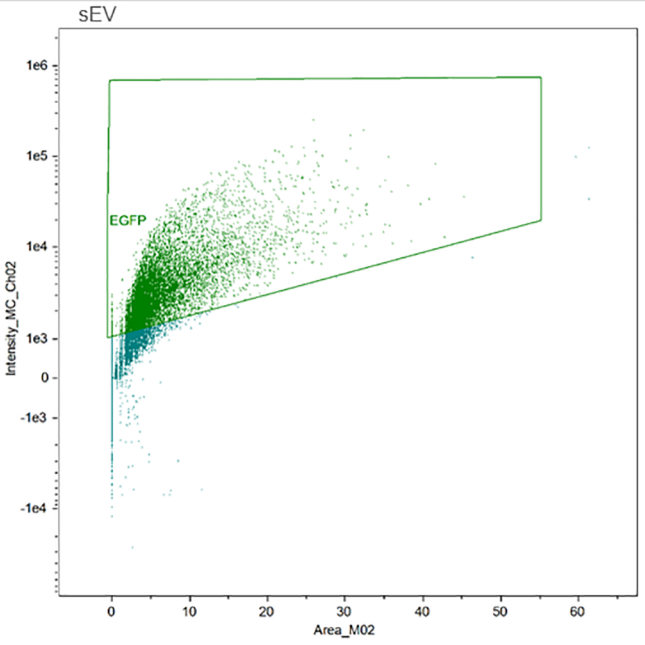
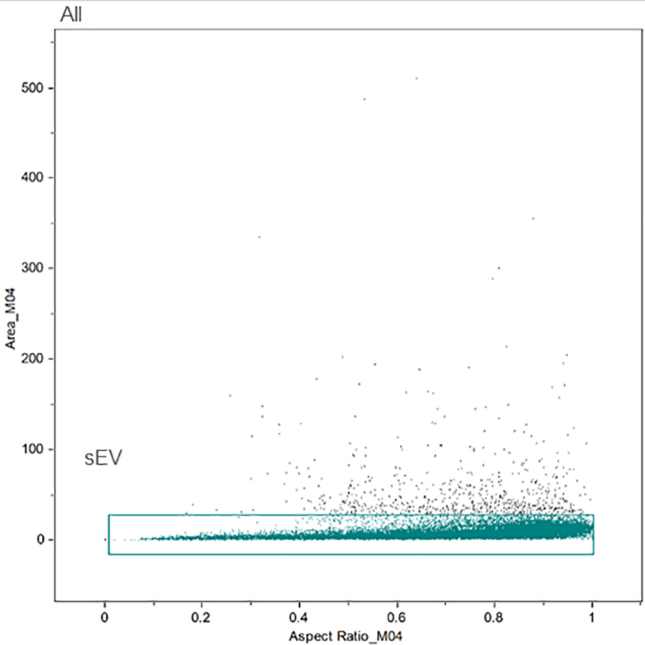
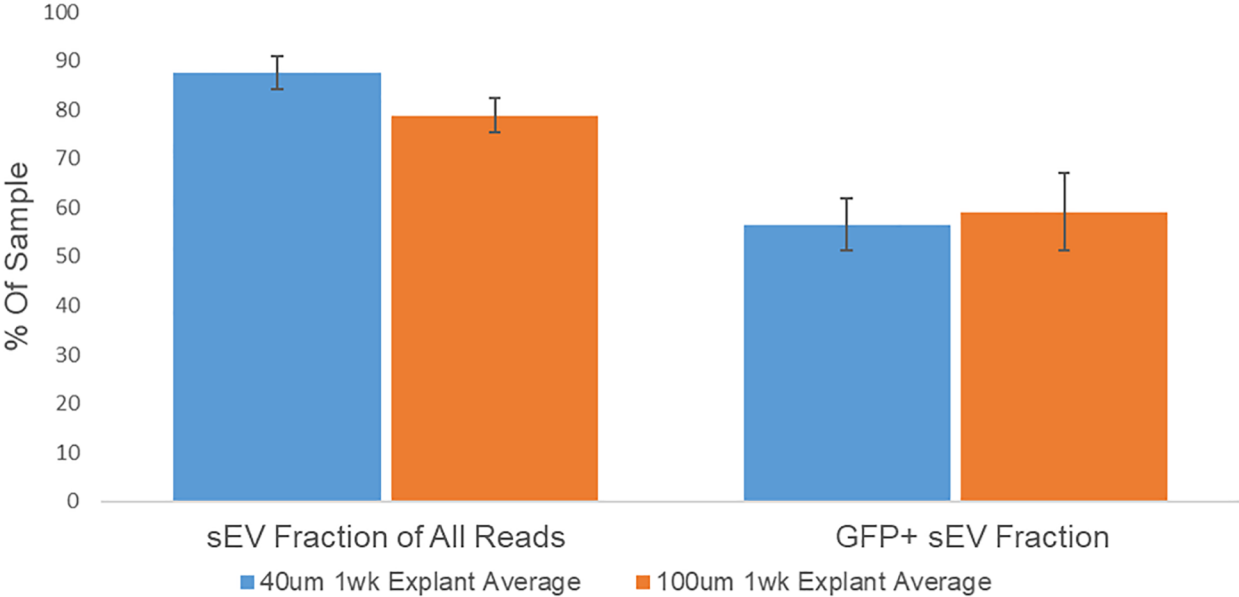
1. Double transgenic
2. mTmG heterozygous
3. LysM-Cre heterozygous
4. Wildtype



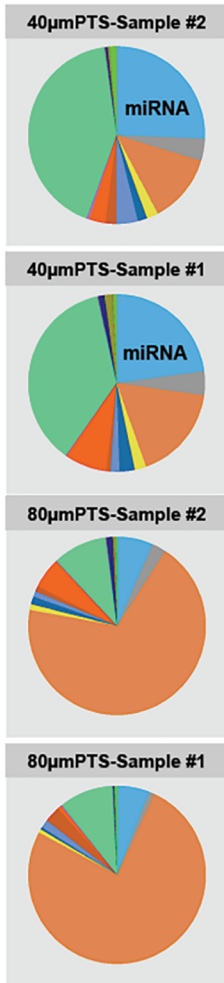
sEV Particle Diameter vs. PTS Pore Size



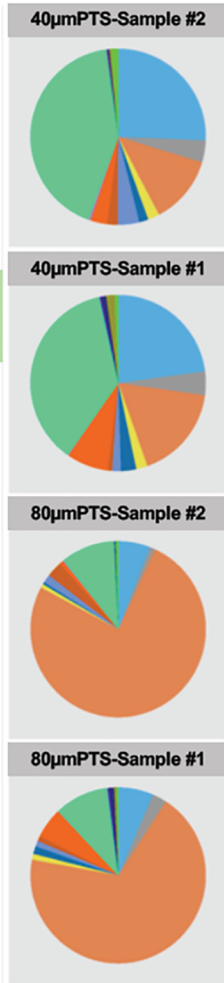
sEV Distribution in 1wk Explanted Scaffolds



Summary of Reads Mapping to Annotation Types



← Myeloid Exosomes



← Non-Myeloid Exosomes

Gene Type

