

SUPPLEMENTAL MATERIAL

Figure S1. Scatterplot of age related natural logarithm of RSA, RMSSD and SDNN with Cubic

smoothing of median.

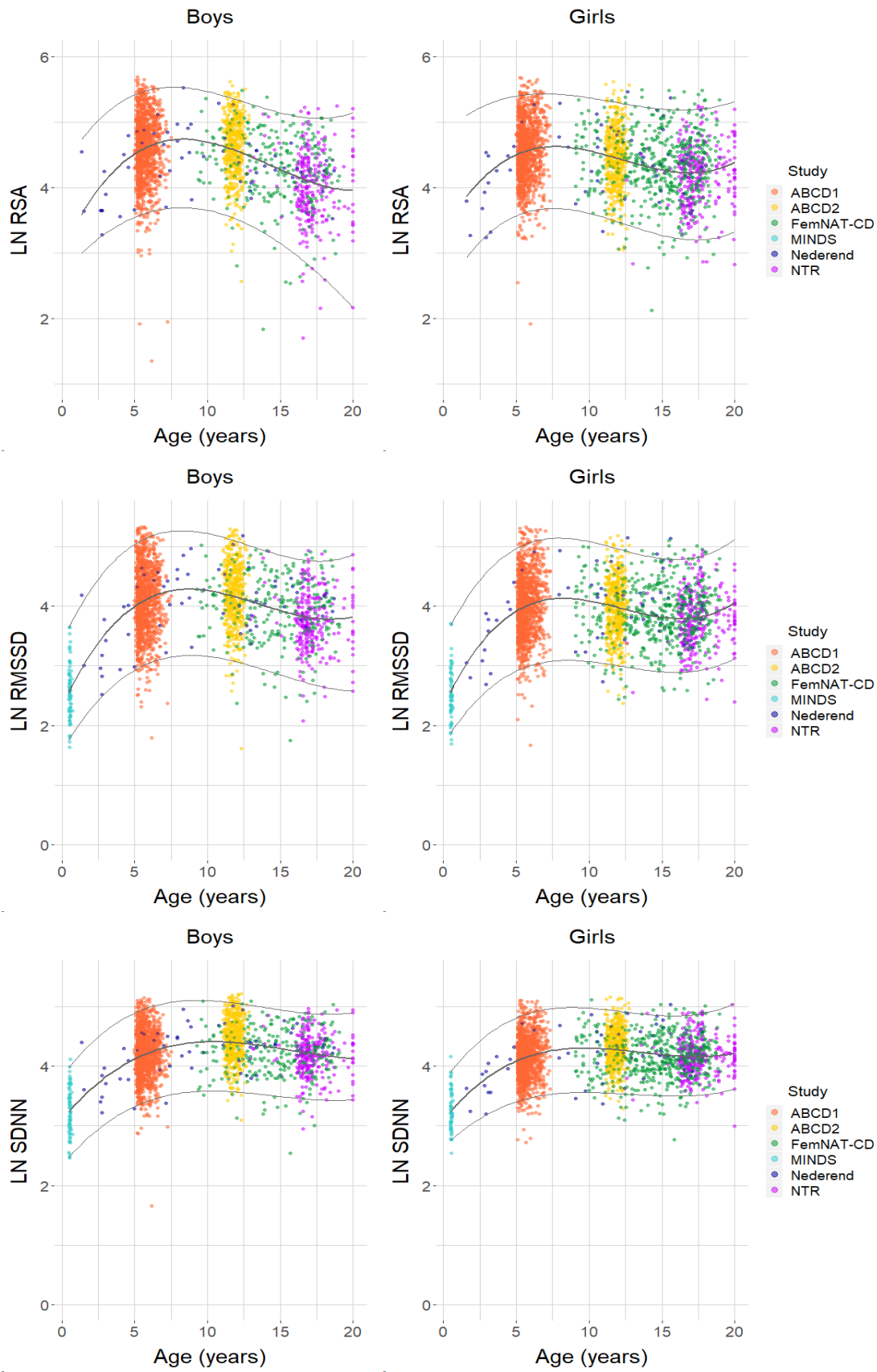


Figure S2. Scatterplot of age related for heart period (HP) corrected PEP with Quadratic smoothing of median.

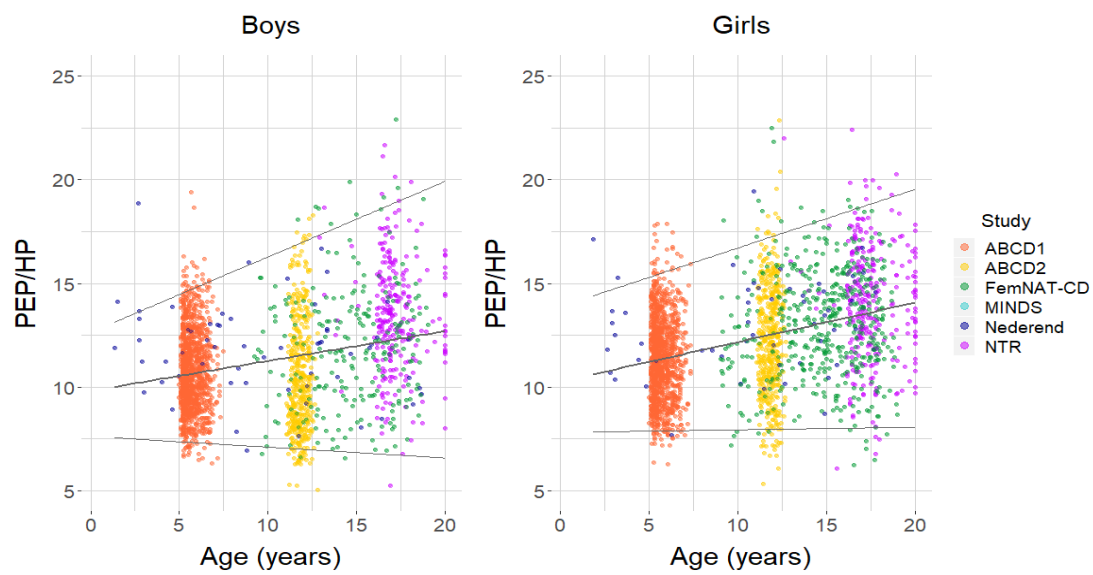


Figure S3. Scatterplot of age related for heart period (HP) corrected natural logarithm of RSA,

RMSSD and SDNN with Cubic smoothing of median.

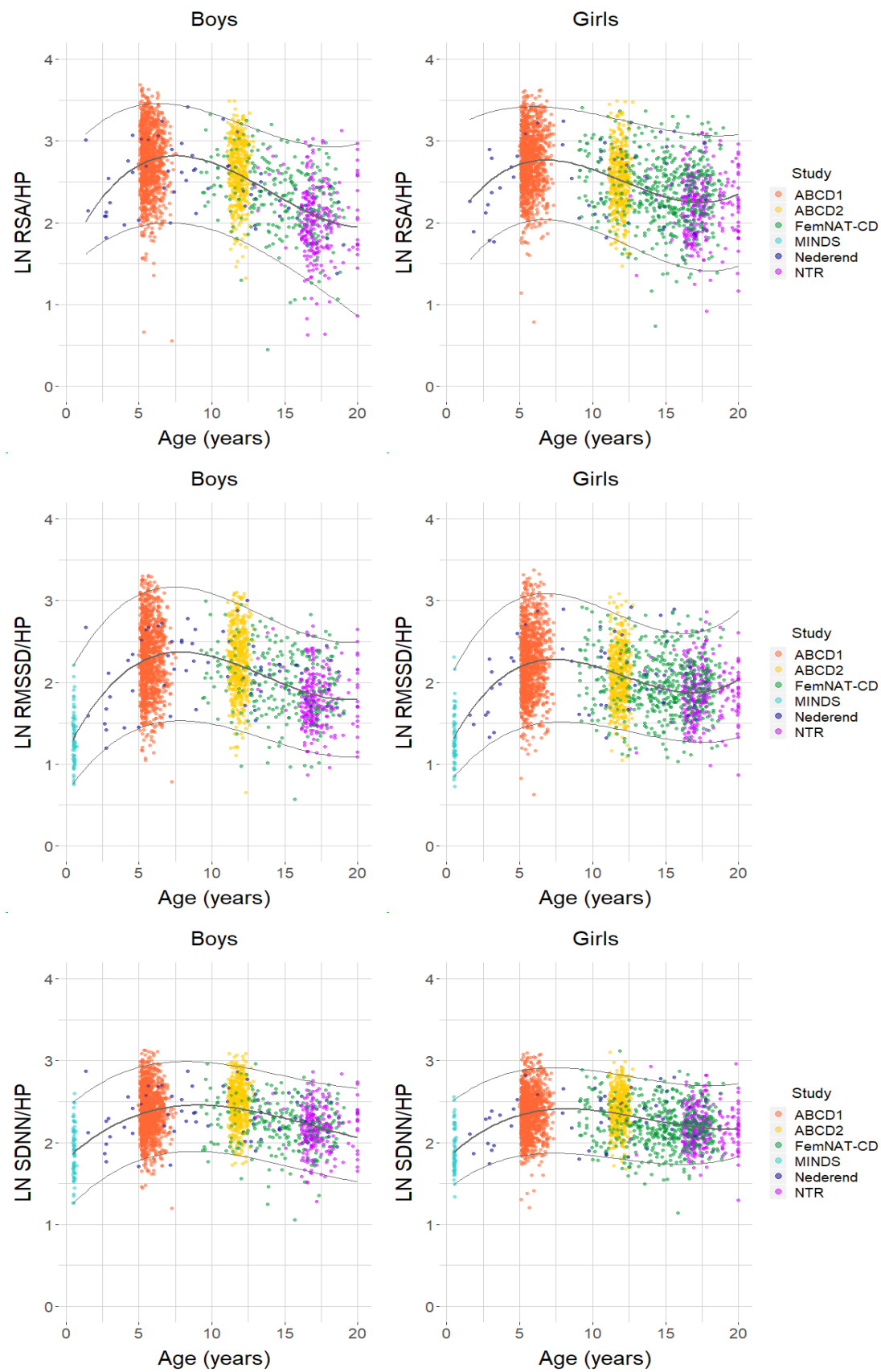


Figure S4. Histograms of standard deviations per age group for natural logarithm of RSA,

RMSSD and SDNN.

