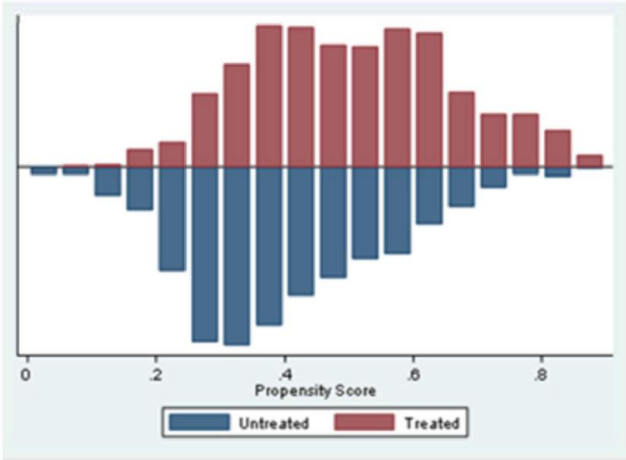


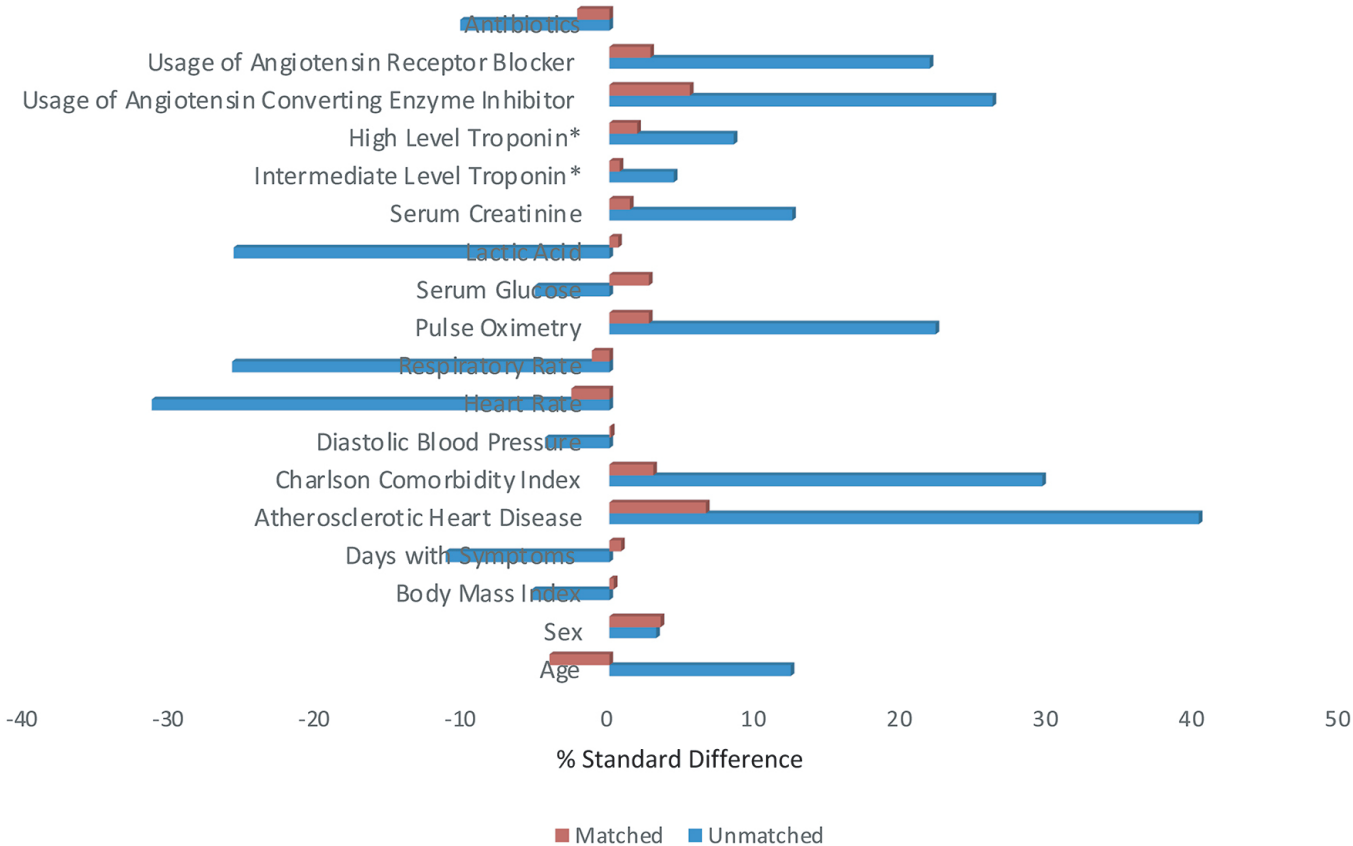
# **SUPPLEMENTAL MATERIAL**

**Figure S1. Propensity score distribution of patients with diabetes who were hospitalized with COVID-19 and treated or not treated with a statin.**



**Figure S2. Changes in standardized differences of the covariates after propensity score matching in patients with diabetes on and off statin.**

*Changes in standardized differences of the covariates after propensity score matching in patients with diabetes on and off statin*



\*Given a skewed distribution of troponin, quartiles 1 and 2 were collapsed as a single category and served as a reference for quartile 3 (intermediate level troponin), quartile 4 (high level troponin) and missing troponin categories. For the missing category, the standardized difference changed from -7.3 to 0.3 after propensity score matching.