



Figure S1. Optical microscopy image of a PCLMA tube produced via microstereolithography with non-optimal curing conditions. Lateral ridges can be seen due to overcuring of the material as a result of high laser power and the higher viscosity of room temperature resin. Scale bar: 1 mm.

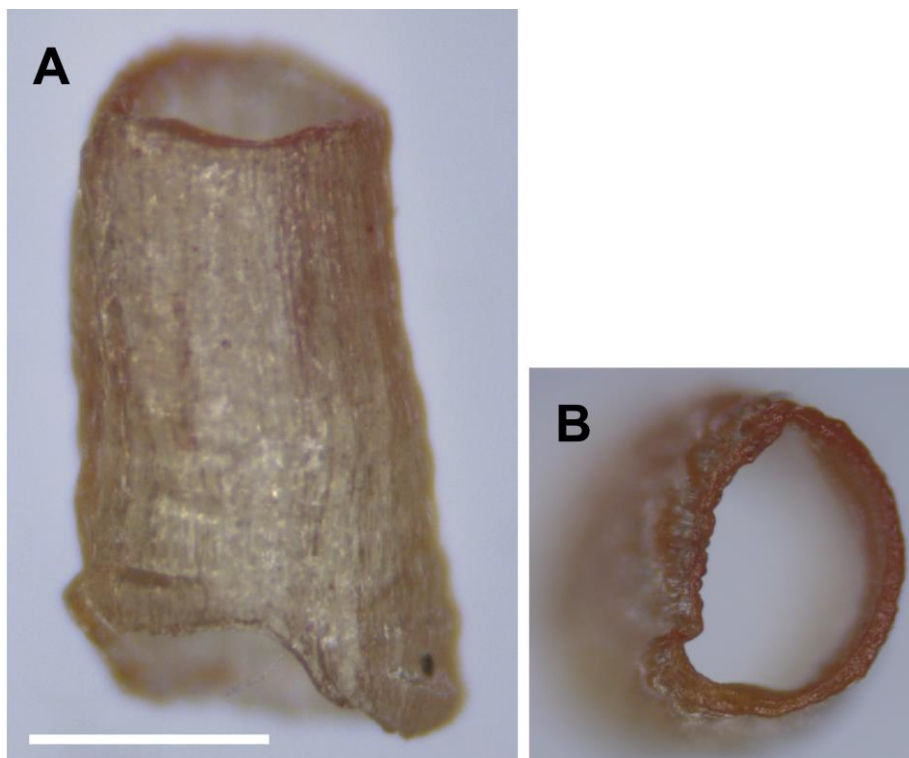


Figure S2. The effect of light absorbers in μ SL. Side view (A) and top view (B) of an under-cured tube produced by μ SL with PCLMA containing too high a concentration of β -carotene (0.2%). Scale bar: 1 mm.