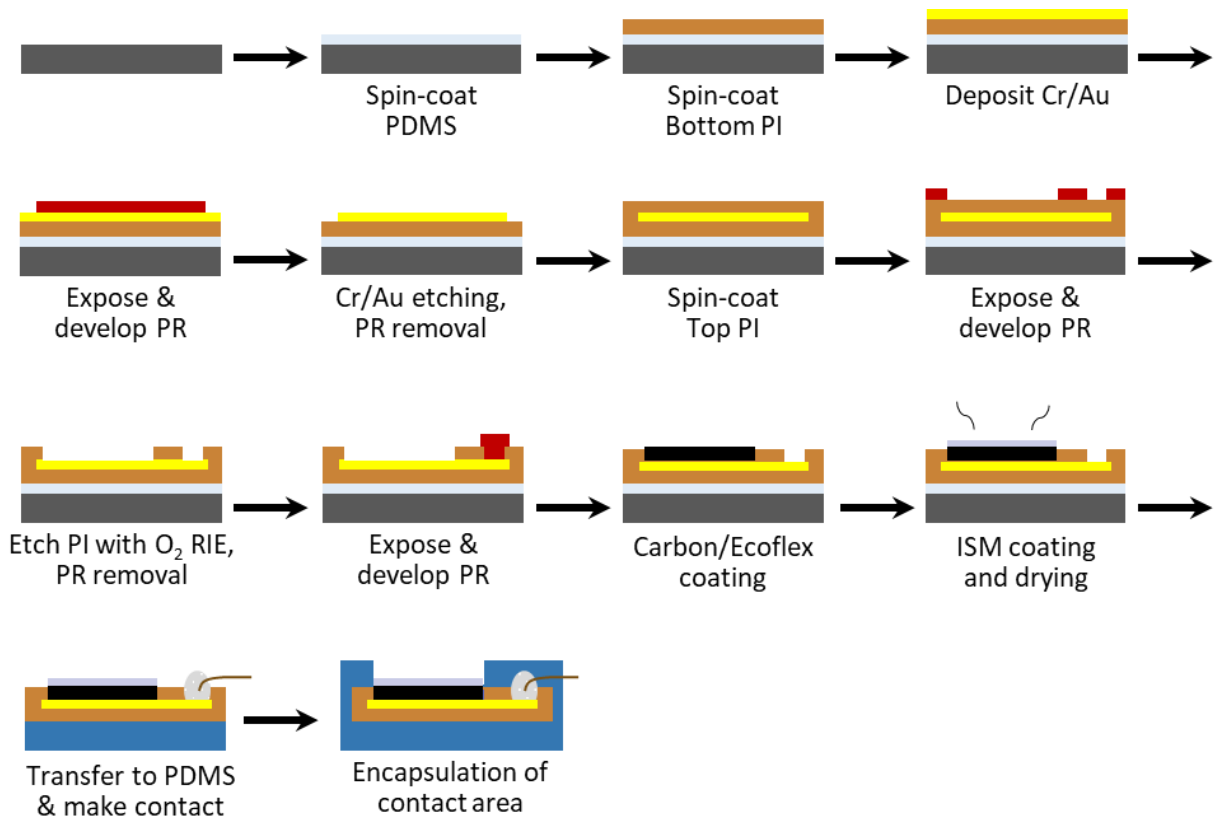


## Supporting Information

# Development of Flexible Ion-Selective Electrodes for Saliva Sodium Detection

Hyo-Ryoung Lim <sup>1,6</sup>, Soon Min Lee <sup>2,6</sup>, Musa Mahmood <sup>1</sup>, Shinjae Kwon <sup>1</sup>, Yun-Soung Kim <sup>1</sup>, Yongkuk Lee <sup>3</sup> and Woon-Hong Yeo <sup>1,4,5\*</sup>

- <sup>1</sup> George W. Woodruff School of Mechanical Engineering, Center for Human-Centric Interfaces and Engineering, Institute for Electronics and Nanotechnology, Georgia Institute of Technology, Atlanta, GA 30332, USA; hlim308@gatech.edu (H.-R.L.); musamahmood@gatech.edu (M.M.); skwon64@gatech.edu (S.K.)
  - <sup>2</sup> Department of Pediatrics, Gangnam Severance Hospital, Yonsei University College of Medicine, Seoul 06273, Korea; smlee@yuhs.ac
  - <sup>3</sup> Department of Biomedical Engineering, Wichita State University, Wichita, KS 67260, USA; yongkuk.lee@wichita.edu
  - <sup>4</sup> Wallace H. Coulter Department of Biomedical Engineering, Georgia Institute of Technology and Emory University School of Medicine, Atlanta, GA 30322, USA
  - <sup>5</sup> Parker H. Petit Institute for Bioengineering and Biosciences, Institute for Materials, Neural Engineering Center, Institute for Robotics and Intelligent Machines, Georgia Institute of Technology, Atlanta, GA 30332, USA
  - <sup>6</sup> These authors contributed equally to this work
- \* Correspondence: whyeo@gatech.edu; Tel.: +1-404-385-5710; Fax: +1-404-894-1658



**Figure S1. Fabrication processes for a flexible film ISE.**

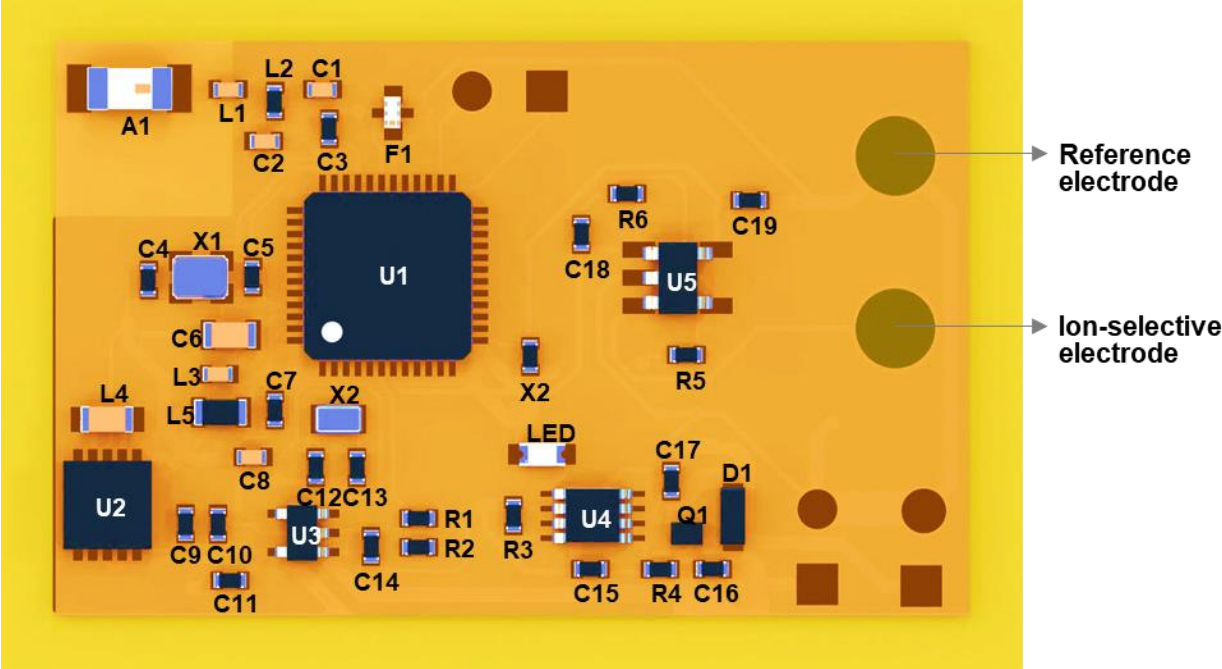


Figure S2. Illustration of wireless, low-power sensor system components with a detailed list of the surface mount chip components in Table S1.

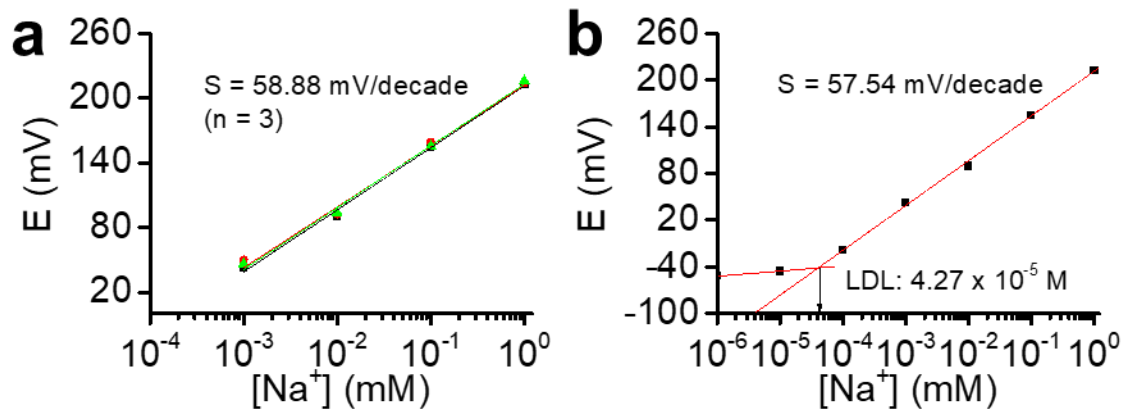


Figure S3. (a) Repeatability, (b) detection range, and low detection limit (LDL) of a flexible SS-ISE.

**Table S1. List of surface mount components used in the wireless, low-power sensor system.**

<b>Component</b>	<b>Description</b>	<b>Value</b>	<b>Part number</b>
U1	Bluetooth PSoC	N/A	NRF52832-QFAA-R
U2	3.3 voltage regulator	N/A	TPS63001
U3	Current limit active-low load switch	N/A	TPS22941
U4	Battery recharge	N/A	MCP73831
U5	Single channel Op-amp IC	N/A	AD8603AUJZREEL7
F1	2.45 GHz low pass filter	N/A	2450FM07A0029
A1	2.45 GHz RF chip antenna	N/A	2450AT18A100
D1	Schottky Diode	N/A	641-1285-1-ND
Q1	P-MOSFET	N/A	DMP21D5UFB4-7BDICT-ND
X1	32 MHz crystal	N/A	ECS-320-8-37CKM
X2	32.768 kHz crystal	N/A	ECS-327-9-12-TR
L1	0402 inductor	3.9 nH	N/A
L2	0402 inductor	2.7 nH	N/A
L3	0402 inductor	15 nH	N/A
L4	0603 inductor	2.2 $\mu$ H	N/A
L5	0603 inductor	10 $\mu$ H	N/A
C1	0402 ceramic capacitor	1.0 pF	N/A
C2, C8	0402 ceramic capacitor	100 nF	N/A
C3	0402 ceramic capacitor	100 pF	N/A
C4, C5, C12, C13	0402 ceramic capacitor	12 pF	N/A
C6	0603 ceramic capacitor	1.0 $\mu$ F	N/A
C7, C15, C17	0402 ceramic capacitor	4.7 $\mu$ F	N/A
C9	0402 ceramic capacitor	22 $\mu$ F	N/A
C10, C11, C14, C18	0402 ceramic capacitor	10 $\mu$ F	N/A
C16	0402 ceramic capacitor	1.0 $\mu$ F	N/A
C19	0402 ceramic capacitor	10 nF	N/A
R1, R2	0402 resistor	1 M $\Omega$	N/A
R3	0402 resistor	2 k $\Omega$	N/A
R4	0402 resistor	100 k $\Omega$	N/A
R5, R6	0402 resistor	10 k $\Omega$	N/A
Battery	Lithium-ion polymer		