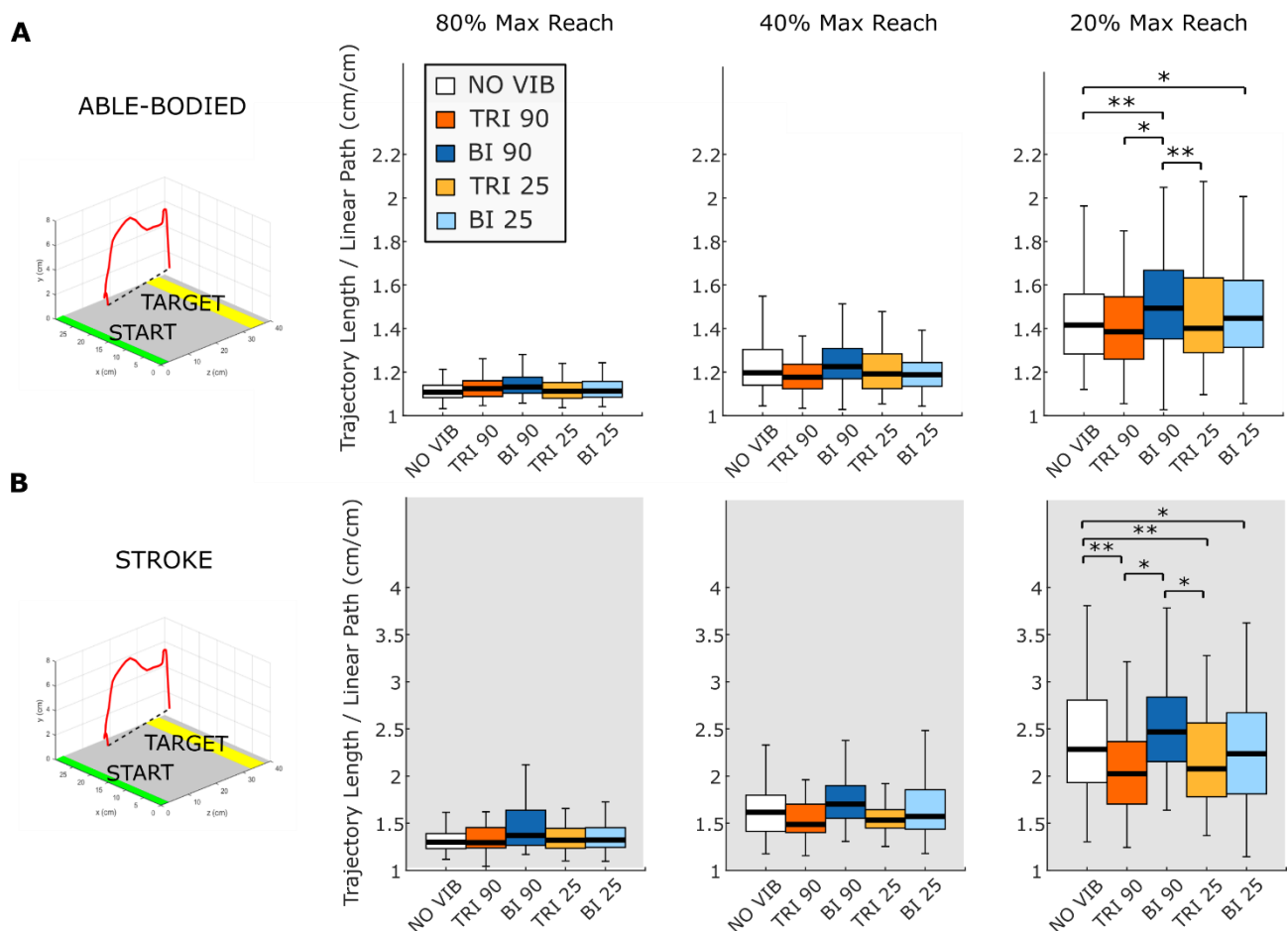


Supplementary Material

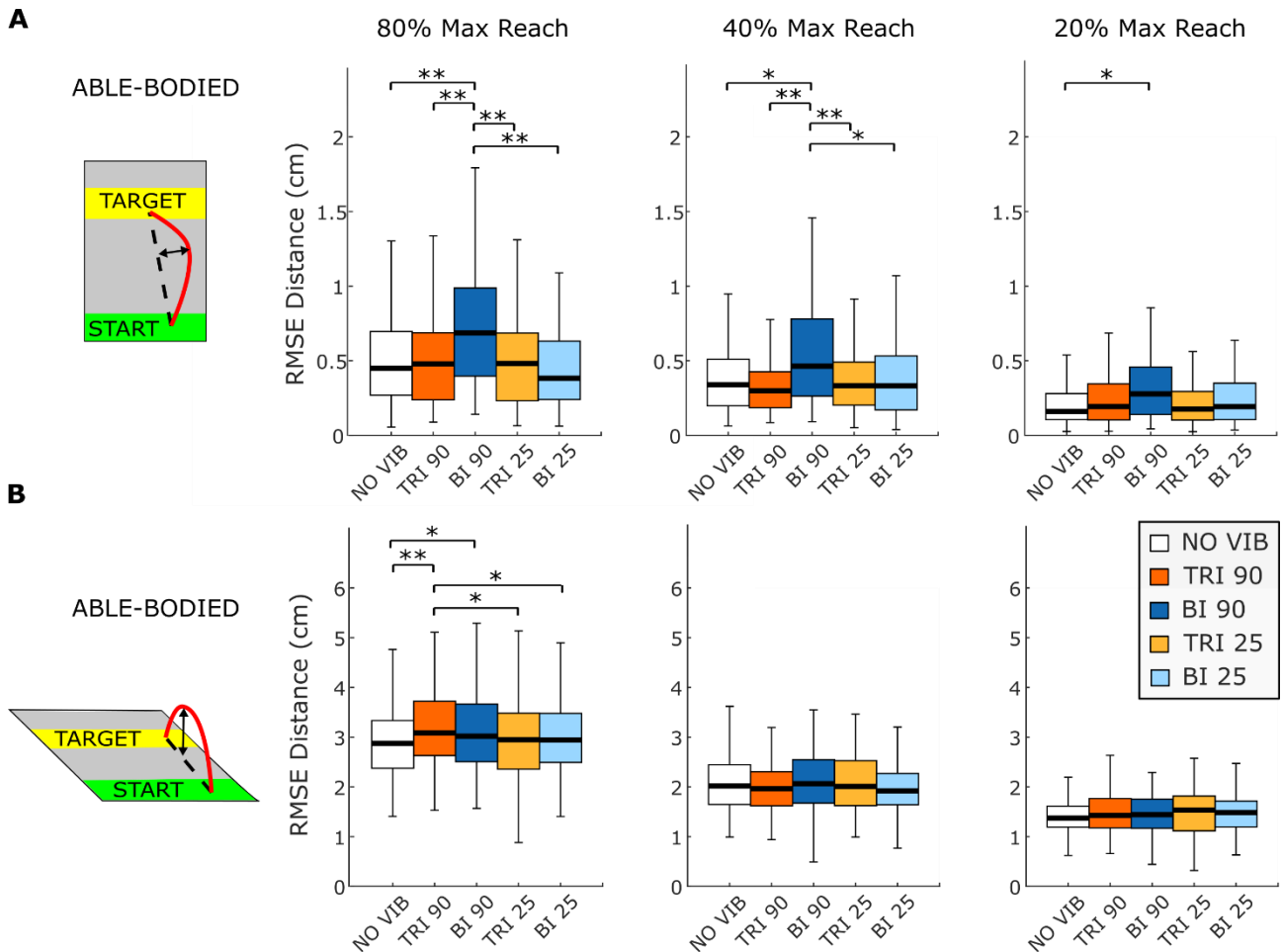
1 Supplementary Figures

The following three figures show the data distribution and the statistical differences when the linear mixed model reported a significant interaction effect between the target distance and the experimental condition for the able-bodied participants or the stroke patients. Supplementary Figure 1 and Supplementary Figure 2 refer to kinematic measurements while Supplementary Figure 3 refers to Fitts' Law parameters.



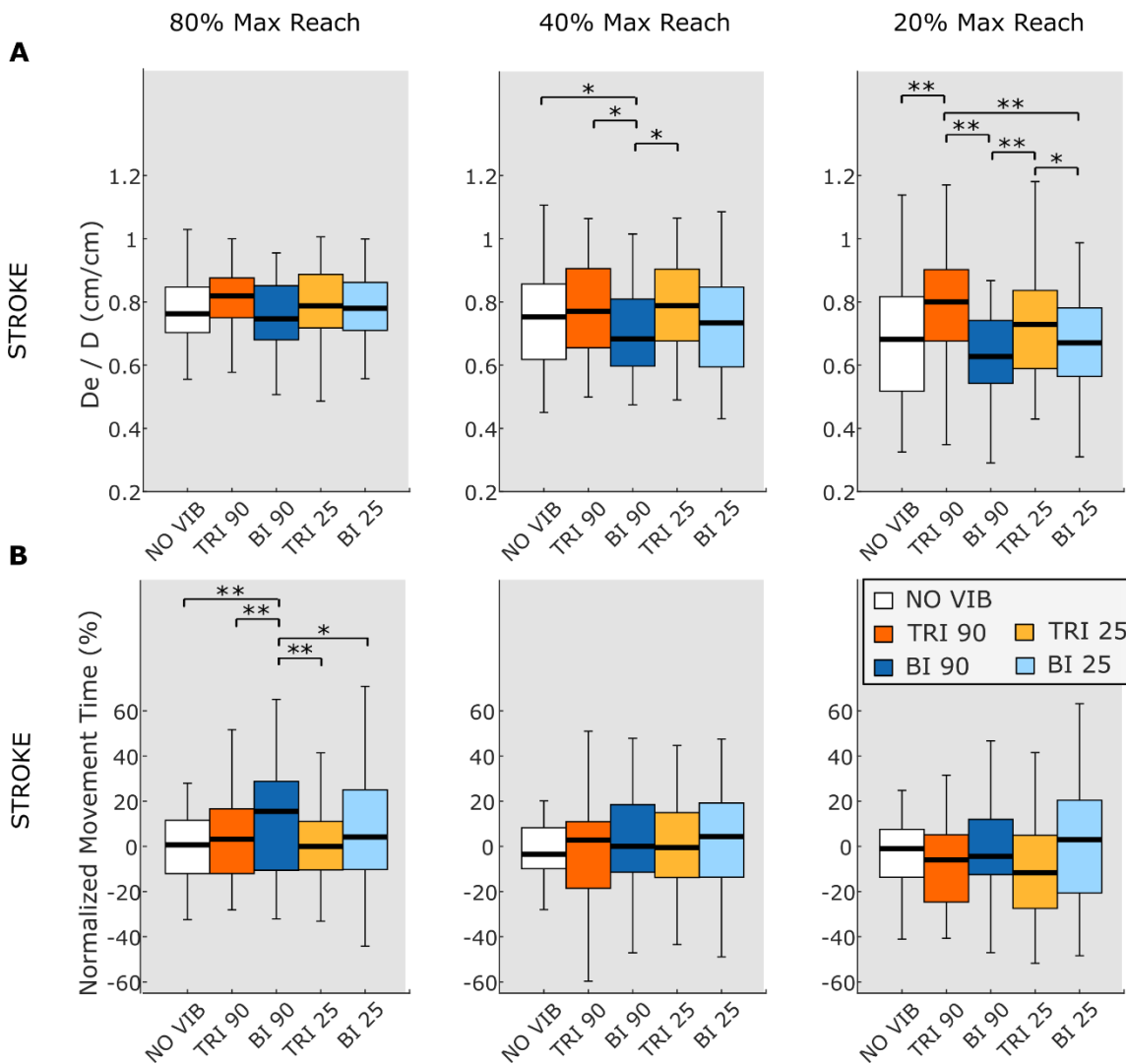
Supplementary Figure 1: Directness of the trajectory for both (A) able-bodied and (B) stroke patients showed a significant interaction effect (vibration condition*target distance). The directness was calculated as the ratio between the length of the travelled trajectory and the length of a linear path connecting the initial and the final position. In each subplot data are reported for targets at 80% (left), 40% (middle) and 20% (right) of the maximum reachable distance. Medians and interquartile ranges [25th and 75th percentile (Q25, Q75)] with whiskers indicating the range of non-outlier values are shown for data aggregated across all participants for both able-bodied and stroke patients when no

vibration (white, NO VIB), 90 Hz vibration the triceps (orange, TRI 90), 90 Hz vibration on the biceps (blue, BI 90), 25 Hz vibration on the triceps (yellow, TRI 25), and 25 Hz vibration on the biceps (light blue, BI 25) was applied. Significant differences between vibration conditions were present only for targets at 20% of the maximum reachable distance indicating that there were less direct trajectories with no vibration and with vibrations on the biceps brachii. Similar but non-significant differences were found for the targets presented at 40% and 80% of the maximum reachable distance. * $p < 0.05$, ** $p < 0.001$.



Supplementary Figure 2: The root mean square errors (RMSE) of the distance of the trajectory from a linear path connecting the initial and the final position showed a significant interaction effect in (A) the transverse plane and in (B) the sagittal plane. In each subplot data are reported for targets at 80% (left), 40% (middle) and 20% (right) of the maximum reachable distance. Medians and interquartile ranges [25th and 75th percentile (Q25, Q75)] with whiskers indicating the range of non-outlier values are shown for data aggregated across all participants when no vibration (white, NO VIB), 90 Hz vibration the triceps (orange, TRI 90), 90 Hz vibration on the biceps (blue, BI 90), 25 Hz vibration on the triceps (yellow, TRI 25), and 25 Hz vibration on the biceps (light blue, BI 25) was applied. In the horizontal plane differences between experimental conditions showed that as the distance increased, the 90Hz vibration on the biceps produced a higher divergence. On the other hand, in the vertical plane

the higher divergence was produced by both 90Hz vibrations on triceps and biceps only at 80% of the maximum reachable distance. * $p < 0.05$, ** $p < 0.001$.



Supplementary Figure 3: Two Fitts' Law parameters, (A) the ratio between the effective and the prescribed distance (De/D) and (B) the normalized movement time, showed significant interaction effects (vibration condition*target distance) only in stroke patients. In each subplot data are reported for targets at 80% (left), 40% (middle) and 20% (right) of the maximum reachable distance. Medians and interquartile ranges [25th and 75th percentile (Q25, Q75)] with whiskers indicating the range of non-outlier values are shown for data aggregated across all stroke patients when no vibration (white, NO VIB), 90 Hz vibration the triceps (orange, TRI 90), 90 Hz vibration on the biceps (blue, BI 90), 25 Hz vibration on the triceps (yellow, TRI 25), and 25 Hz vibration on the biceps (light blue, BI 25) was applied. The distances ratio (De/D) reported significant differences between experimental conditions only at the 20% and 40% of the maximum reachable distance indicating that vibration on the triceps brachii allowed stroke patients to better approach the target. Although non-significant a similar trend was also observed at the 80% of the maximum reachable distance. On the other hand, the normalized

movement time showed that the movement time significantly increased when the biceps was vibrated at 90Hz only at the 80% of the maximum reachable distance. * $p < 0.05$, ** $p < 0.001$.

2 Results of the Linear Mixed Model Analyses

In the following tables, p -values (Sig.) for main and interaction effects are presented for kinematics and Fitts' Law measures. Mean differences (Mean Diff.), standard errors (Std. Error) and p -values for Bonferroni-corrected post-hoc pairwise comparisons are also shown. ** indicates that a Bonferroni adjustment for multiple comparisons was made.

Example SPSS syntax for these analyses, where *Measure* is replaced by the name of the measure to be analyzed and post-hoc pairwise comparisons (/EMMEANS) are only examined if the related main or interaction effect was significant:

```
MIXED ID BY Vibration_Condition Target_Distance Target_Width
/CRITERIA=CIN(95) MXITER(100) MXSTEP(10) SCORING(1)
SINGULAR(0.000000000001) HCONVERGE(0, ABSOLUTE) LCONVERGE(0, ABSOLUTE)
PCONVERGE(0.000001, ABSOLUTE)
/FIXED= Vibration_Condition Target_Distance Vibration_Condition *
Target_Distance | SSTYPE(3)
/METHOD=REML
/RANDOM=INTERCEPT | SUBJECT(SubjNum) COVTYPE(ID)
/REPEATED=Trials | SUBJECT(SubjNum* Vibration_Condition *
Target_Distance *Target_Width) COVTYPE(DIAG)
/EMMEANS=TABLES(Vibration_Condition) COMPARE ADJ(BONFERRONI)
/EMMEANS=TABLES(Target_Distance) COMPARE ADJ(BONFERRONI)
/EMMEANS=TABLES(Vibration_Condition * Target_Distance)
COMPARE(Vibration_Condition) ADJ(BONFERRONI)
/EMMEANS=TABLES(Vibration_Condition * Target_Distance)
COMPARE(Target_Distance) ADJ(BONFERRONI).
```

2.1 Kinematics

2.1.1 Directness

2.1.1.1 Able-Bodied

2.1.1.1.1 Tests of Fixed Main and Interaction Effects

| Effect | Numerator df | Denominator df | F | Sig. |
|---|--------------|----------------|----------|-------|
| Intercept | 1 | 10.993 | 3489.154 | 0.000 |
| Vibration condition | 4 | 1099.569 | 5.807 | 0.000 |
| Target Distance | 2 | 1099.571 | 417.455 | 0.000 |
| Experimental Condition * Target Distance | 8 | 1099.570 | 2.220 | 0.024 |

2.1.1.1.2 Pairwise Comparisons

| (I) | (J) | Mean Diff. (I-J) | Std. Error | df | Sig.** | |
|--|--------|------------------|------------|----------|----------|-------|
| Vibration Condition | | | | | | |
| BI 90 | BI 25 | 0.042 | 0.018 | 1098.768 | 0.171 | |
| | NO VIB | 0.073 | 0.018 | 1100.002 | 0.000 | |
| | TRI 25 | 0.064 | 0.018 | 1100.002 | 0.003 | |
| | TRI 90 | 0.070 | 0.018 | 1099.695 | 0.001 | |
| BI 25 | NO VIB | 0.031 | 0.018 | 1099.074 | 0.849 | |
| | TRI 25 | 0.021 | 0.018 | 1099.074 | 1.000 | |
| | TRI 90 | 0.027 | 0.018 | 1098.768 | 1.000 | |
| NO VIB | TRI 25 | -0.009 | 0.018 | 1100.309 | 1.000 | |
| | TRI 90 | -0.004 | 0.018 | 1100.002 | 1.000 | |
| TRI 25 | TRI 90 | 0.006 | 0.018 | 1100.002 | 1.000 | |
| Target Distance | | | | | | |
| 20% | 40% | 0.292 | 0.014 | 1099.201 | 0.000 | |
| | 80% | 0.380 | 0.014 | 1099.386 | 0.000 | |
| 40% | 80% | 0.088 | 0.014 | 1100.125 | 0.000 | |
| Vibration Condition * Target Distance | | | | | | |
| 20% | BI 90 | BI 25 | 0.059 | 0.031 | 1095.677 | 0.559 |
| | | NO VIB | 0.159 | 0.031 | 1099.389 | 0.000 |
| | | TRI 25 | 0.129 | 0.031 | 1099.389 | 0.000 |
| | | TRI 90 | 0.122 | 0.031 | 1099.389 | 0.001 |
| 20% | BI 25 | NO VIB | 0.100 | 0.031 | 1096.588 | 0.013 |

| | | | | | | |
|-----|--------|--------|--------|-------|----------|-------|
| | | TRI 25 | 0.069 | 0.031 | 1096.588 | 0.247 |
| | | TRI 90 | 0.063 | 0.031 | 1096.588 | 0.425 |
| 20% | NO VIB | TRI 25 | -0.030 | 0.031 | 1100.309 | 1.000 |
| | | TRI 90 | -0.037 | 0.031 | 1100.309 | 1.000 |
| 20% | TRI 25 | TRI 90 | -0.007 | 0.031 | 1100.309 | 1.000 |
| 40% | BI 90 | BI 25 | 0.052 | 0.031 | 1100.309 | 0.910 |
| | | NO VIB | 0.028 | 0.031 | 1100.309 | 1.000 |
| | | TRI 25 | 0.046 | 0.031 | 1100.309 | 1.000 |
| | | TRI 90 | 0.068 | 0.031 | 1099.389 | 0.279 |
| 40% | BI 25 | NO VIB | -0.024 | 0.031 | 1100.309 | 1.000 |
| | | TRI 25 | -0.006 | 0.031 | 1100.309 | 1.000 |
| | | TRI 90 | 0.016 | 0.031 | 1099.389 | 1.000 |
| 40% | NO VIB | TRI 25 | 0.018 | 0.031 | 1100.309 | 1.000 |
| | | TRI 90 | 0.039 | 0.031 | 1099.389 | 1.000 |
| 40% | TRI 25 | TRI 90 | 0.022 | 0.031 | 1099.389 | 1.000 |
| 80% | BI 90 | BI 25 | 0.016 | 0.031 | 1100.309 | 1.000 |
| | | NO VIB | 0.032 | 0.031 | 1100.309 | 1.000 |
| | | TRI 25 | 0.017 | 0.031 | 1100.309 | 1.000 |
| | | TRI 90 | 0.019 | 0.031 | 1100.309 | 1.000 |
| 80% | BI 25 | NO VIB | 0.016 | 0.031 | 1100.309 | 1.000 |
| | | TRI 25 | 0.001 | 0.031 | 1100.309 | 1.000 |
| | | TRI 90 | 0.003 | 0.031 | 1100.309 | 1.000 |
| 80% | NO VIB | TRI 25 | -0.016 | 0.031 | 1100.309 | 1.000 |
| | | TRI 90 | -0.013 | 0.031 | 1100.309 | 1.000 |
| 80% | TRI 25 | TRI 90 | 0.002 | 0.031 | 1100.309 | 1.000 |

2.1.1.2 Stroke Patients

2.1.1.2.1 Tests of Fixed Main and Interaction Effects

| Effect | Numerator df | Denominator df | F | Sig. |
|---|--------------|----------------|---------|-------|
| Intercept | 1 | 4.982 | 357.882 | 0.000 |
| Vibration condition | 4 | 731.821 | 5.417 | 0.000 |
| Target Distance | 2 | 731.835 | 232.318 | 0.000 |
| Experimental Condition * Target Distance | 8 | 731.660 | 2.264 | 0.021 |

2.1.1.2.2 Pairwise Comparisons

| (I) | (J) | Mean Diff. (I-J) | Std. Error. | df | Sig.** | |
|--|--------|------------------|-------------|---------|---------|-------|
| Vibration Condition | | | | | | |
| BI 90 | BI 25 | 0.062 | 0.063 | 735.285 | 1.000 | |
| | NO VIB | 0.190 | 0.063 | 734.981 | 0.026 | |
| | TRI 25 | 0.190 | 0.063 | 734.981 | 0.026 | |
| | TRI 90 | 0.176 | 0.063 | 735.543 | 0.052 | |
| BI 25 | NO VIB | -0.102 | 0.063 | 728.745 | 1.000 | |
| | TRI 25 | 0.129 | 0.063 | 730.423 | 0.412 | |
| | TRI 90 | 0.115 | 0.063 | 731.090 | 0.680 | |
| NO VIB | TRI 25 | 0.231 | 0.063 | 728.716 | 0.003 | |
| | TRI 90 | 0.217 | 0.063 | 729.370 | 0.006 | |
| TRI 25 | TRI 90 | -0.014 | 0.063 | 730.955 | 1.000 | |
| Target Distance | | | | | | |
| 20% | 40% | 0.759 | 0.049 | 734.038 | 0.000 | |
| | 80% | 1.005 | 0.049 | 730.031 | 0.000 | |
| 40% | 80% | 0.247 | 0.049 | 731.589 | 0.000 | |
| Vibration Condition * Target Distance | | | | | | |
| 20% | BI 90 | BI 25 | 0.108 | 0.108 | 734.312 | 1.000 |
| | | NO VIB | -0.225 | 0.109 | 732.704 | 0.389 |
| | | TRI 25 | 0.316 | 0.108 | 734.312 | 0.037 |
| | | TRI 90 | 0.308 | 0.109 | 738.684 | 0.048 |
| 20% | BI 25 | NO VIB | -0.333 | 0.108 | 727.620 | 0.022 |
| | | TRI 25 | 0.209 | 0.108 | 729.390 | 0.532 |
| | | TRI 90 | 0.201 | 0.108 | 734.312 | 0.643 |
| 20% | NO VIB | TRI 25 | 0.541 | 0.108 | 727.620 | 0.000 |
| | | TRI 90 | 0.534 | 0.109 | 732.704 | 0.000 |
| 20% | TRI 25 | TRI 90 | -0.008 | 0.108 | 734.312 | 1.000 |
| 40% | BI 90 | BI 25 | 0.030 | 0.109 | 739.480 | 1.000 |
| | | NO VIB | -0.002 | 0.109 | 739.480 | 1.000 |
| | | TRI 25 | 0.148 | 0.110 | 743.281 | 1.000 |
| | | TRI 90 | 0.124 | 0.109 | 739.480 | 1.000 |
| 40% | BI 25 | NO VIB | -0.032 | 0.108 | 729.390 | 1.000 |

| | | | | | | |
|-----|--------|--------|--------|-------|---------|-------|
| | | TRI 25 | 0.118 | 0.108 | 734.312 | 1.000 |
| | | TRI 90 | 0.094 | 0.108 | 729.390 | 1.000 |
| 40% | NO VIB | TRI 25 | 0.150 | 0.108 | 734.312 | 1.000 |
| | | TRI 90 | 0.125 | 0.108 | 729.390 | 1.000 |
| 40% | TRI 25 | TRI 90 | -0.025 | 0.108 | 734.312 | 1.000 |
| 80% | BI 90 | BI 25 | 0.047 | 0.109 | 730.933 | 1.000 |
| | | NO VIB | 0.105 | 0.108 | 727.620 | 1.000 |
| | | TRI 25 | 0.106 | 0.109 | 725.453 | 1.000 |
| | | TRI 90 | 0.096 | 0.108 | 727.620 | 1.000 |
| 80% | BI 25 | NO VIB | 0.058 | 0.110 | 728.890 | 1.000 |
| | | TRI 25 | 0.059 | 0.110 | 726.466 | 1.000 |
| | | TRI 90 | 0.050 | 0.110 | 728.890 | 1.000 |
| 80% | NO VIB | TRI 25 | 0.001 | 0.109 | 723.368 | 1.000 |
| | | TRI 90 | -0.009 | 0.109 | 725.689 | 1.000 |
| 80% | TRI 25 | TRI 90 | -0.009 | 0.109 | 723.368 | 1.000 |

2.1.2 Root Mean Square Errors of the Trajectory Deviation in the Transverse Plane

2.1.2.1 Able-Bodied

2.1.2.1.1 Tests of Fixed Main and Interaction Effects

| Effect | Numerator df | Denominator df | F | Sig. |
|---|--------------|----------------|---------|-------|
| Intercept | 1 | 10.980 | 94.534 | 0.000 |
| Vibration condition | 4 | 1548.678 | 23.430 | 0.000 |
| Target Distance | 2 | 1548.684 | 135.097 | 0.000 |
| Experimental Condition * Target Distance | 8 | 1548.676 | 2.485 | 0.011 |

2.1.2.1.2 Pairwise Comparisons

| (I) | (J) | Mean Diff. (I-J) | Std. Error. | df | Sig.** |
|---------------------|--------|------------------|-------------|----------|--------|
| Vibration Condition | | | | | |
| BI 90 | BI 25 | 0.177 | 0.023 | 1548.217 | 0.000 |
| | NO VIB | 0.169 | 0.023 | 1548.723 | 0.000 |
| | TRI 25 | 0.172 | 0.023 | 1548.723 | 0.000 |
| | TRI 90 | 0.175 | 0.023 | 1547.920 | 0.000 |

| | | | | | | |
|--|--------|--------|--------|----------|----------|-------|
| BI 25 | NO VIB | -0.008 | 0.023 | 1549.025 | 1.000 | |
| | TRI 25 | -0.005 | 0.023 | 1549.025 | 1.000 | |
| | TRI 90 | -0.002 | 0.023 | 1548.217 | 1.000 | |
| NO VIB | TRI 25 | 0.002 | 0.023 | 1549.514 | 1.000 | |
| | TRI 90 | 0.006 | 0.023 | 1548.723 | 1.000 | |
| TRI 25 | TRI 90 | 0.004 | 0.023 | 1548.723 | 1.000 | |
| Target Distance | | | | | | |
| 20% | 40% | -0.149 | 0.018 | 1548.263 | 0.000 | |
| | 80% | -0.289 | 0.018 | 1548.748 | 0.000 | |
| 40% | 80% | -0.140 | 0.018 | 1549.041 | 0.000 | |
| Vibration Condition * Target Distance | | | | | | |
| 20% | BI 90 | BI 25 | 0.087 | 0.040 | 1545.407 | 0.279 |
| | | NO VIB | 0.126 | 0.039 | 1547.110 | 0.014 |
| | | TRI 25 | 0.094 | 0.039 | 1547.110 | 0.172 |
| | | TRI 90 | 0.075 | 0.039 | 1547.110 | 0.551 |
| 20% | BI 25 | NO VIB | 0.039 | 0.039 | 1547.935 | 1.000 |
| | | TRI 25 | 0.007 | 0.039 | 1547.935 | 1.000 |
| | | TRI 90 | -0.012 | 0.039 | 1547.935 | 1.000 |
| 20% | NO VIB | TRI 25 | -0.032 | 0.039 | 1549.514 | 1.000 |
| | | TRI 90 | -0.050 | 0.039 | 1549.514 | 1.000 |
| 20% | TRI 25 | TRI 90 | -0.018 | 0.039 | 1549.514 | 1.000 |
| 40% | BI 90 | BI 25 | 0.159 | 0.039 | 1549.514 | 0.001 |
| | | NO VIB | 0.132 | 0.039 | 1549.514 | 0.008 |
| | | TRI 25 | 0.163 | 0.039 | 1549.514 | 0.000 |
| | | TRI 90 | 0.197 | 0.039 | 1547.110 | 0.000 |
| 40% | BI 25 | NO VIB | -0.027 | 0.039 | 1549.514 | 1.000 |
| | | TRI 25 | 0.004 | 0.039 | 1549.514 | 1.000 |
| | | TRI 90 | 0.037 | 0.039 | 1547.110 | 1.000 |
| 40% | NO VIB | TRI 25 | 0.031 | 0.039 | 1549.514 | 1.000 |
| | | TRI 90 | 0.064 | 0.039 | 1547.110 | 1.000 |
| 40% | TRI 25 | TRI 90 | 0.034 | 0.039 | 1547.110 | 1.000 |
| 80% | BI 90 | BI 25 | 0.285 | 0.039 | 1549.514 | 0.000 |
| | | NO VIB | 0.250 | 0.039 | 1549.514 | 0.000 |
| | | TRI 25 | 0.259 | 0.039 | 1549.514 | 0.000 |

| | | | | | | |
|-----|--------|--------|--------|-------|----------|-------|
| | | TRI 90 | 0.254 | 0.039 | 1549.514 | 0.000 |
| 80% | BI 25 | NO VIB | -0.035 | 0.039 | 1549.514 | 1.000 |
| | | TRI 25 | -0.027 | 0.039 | 1549.514 | 1.000 |
| | | TRI 90 | -0.031 | 0.039 | 1549.514 | 1.000 |
| 80% | NO VIB | TRI 25 | 0.008 | 0.039 | 1549.514 | 1.000 |
| | | TRI 90 | 0.004 | 0.039 | 1549.514 | 1.000 |
| 80% | TRI 25 | TRI 90 | -0.004 | 0.039 | 1549.514 | 1.000 |

2.1.2.2 Stroke Patients

2.1.2.2.1 Tests of Fixed Main and Interaction Effects

| Effect | Numerator df | Denominator df | F | Sig. |
|---|--------------|----------------|---------|-------|
| Intercept | 1 | 4.994 | 42.412 | 0.001 |
| Vibration condition | 4 | 758.968 | 4.243 | 0.002 |
| Target Distance | 2 | 758.943 | 113.091 | 0.000 |
| Experimental Condition * Target Distance | 8 | 758.764 | 0.629 | 0.754 |

2.1.2.2.2 Pairwise Comparisons

| (I) | (J) | Mean Diff. (I-J) | Std. Error. | df | Sig.** |
|----------------------------|--------|------------------|-------------|---------|--------|
| Vibration Condition | | | | | |
| BI 90 | BI 25 | 0.070 | 0.062 | 756.775 | 1.000 |
| | NO VIB | 0.129 | 0.062 | 757.569 | 0.383 |
| | TRI 25 | 0.177 | 0.062 | 756.893 | 0.046 |
| | TRI 90 | 0.233 | 0.062 | 755.656 | 0.002 |
| BI 25 | NO VIB | 0.059 | 0.062 | 761.284 | 1.000 |
| | TRI 25 | 0.107 | 0.062 | 760.607 | 0.870 |
| | TRI 90 | 0.163 | 0.062 | 759.529 | 0.093 |
| NO VIB | TRI 25 | 0.048 | 0.062 | 761.254 | 1.000 |
| | TRI 90 | 0.103 | 0.062 | 760.225 | 0.970 |
| TRI 25 | TRI 90 | 0.056 | 0.062 | 759.558 | 1.000 |
| Target Distance | | | | | |
| 20% | 40% | -0.222 | 0.048 | 756.099 | 0.000 |
| | 80% | -0.712 | 0.048 | 760.983 | 0.000 |
| 40% | 80% | -0.489 | 0.048 | 759.981 | 0.000 |

2.1.3 Root Mean Square Errors of the Trajectory Deviation in The Sagittal Plane

2.1.3.1 Able-Bodied

2.1.3.1.1 Tests of Fixed Main and Interaction Effects

| Effect | Numerator df | Denominator df | F | Sig. |
|---|--------------|----------------|----------|-------|
| Intercept | 1 | 10.999 | 281.488 | 0.000 |
| Vibration condition | 4 | 1582.661 | 3.451 | 0.008 |
| Target Distance | 2 | 1582.667 | 1396.412 | 0.000 |
| Experimental Condition * Target Distance | 8 | 1582.658 | 2.905 | 0.003 |

2.1.3.1.2 Pairwise Comparisons

| (I) | (J) | Mean Diff. (I-J) | Std. Error. | df | Sig.** | |
|--|--------|------------------|-------------|----------|----------|-------|
| Vibration Condition | | | | | | |
| BI 90 | BI 25 | 0.101 | 0.038 | 1582.139 | 0.084 | |
| | NO VIB | 0.116 | 0.038 | 1582.870 | 0.024 | |
| | TRI 25 | 0.053 | 0.038 | 1582.870 | 1.000 | |
| | TRI 90 | 0.020 | 0.038 | 1582.439 | 1.000 | |
| BI 25 | NO VIB | 0.015 | 0.038 | 1582.578 | 1.000 | |
| | TRI 25 | -0.047 | 0.038 | 1582.578 | 1.000 | |
| | TRI 90 | -0.081 | 0.038 | 1582.139 | 0.340 | |
| NO VIB | TRI 25 | -0.063 | 0.038 | 1583.287 | 1.000 | |
| | TRI 90 | -0.096 | 0.038 | 1582.870 | 0.117 | |
| TRI 25 | TRI 90 | -0.033 | 0.038 | 1582.870 | 1.000 | |
| Target Distance | | | | | | |
| 20% | 40% | -0.561 | 0.030 | 1582.350 | 0.000 | |
| | 80% | -1.540 | 0.030 | 1582.613 | 0.000 | |
| 40% | 80% | -0.979 | 0.029 | 1583.038 | 0.000 | |
| Vibration Condition * Target Distance | | | | | | |
| 20% | BI 90 | BI 25 | 0.047 | 0.066 | 1579.556 | 1.000 |
| | | NO VIB | 0.103 | 0.066 | 1581.996 | 1.000 |
| | | TRI 25 | -0.003 | 0.066 | 1581.996 | 1.000 |
| | | TRI 90 | 0.055 | 0.066 | 1581.996 | 1.000 |
| 20% | BI 25 | NO VIB | 0.056 | 0.066 | 1581.027 | 1.000 |
| | | TRI 25 | -0.050 | 0.066 | 1581.027 | 1.000 |

| | | | | | | |
|-----|--------|--------|--------|-------|----------|-------|
| | | TRI 90 | 0.008 | 0.066 | 1581.027 | 1.000 |
| 20% | NO VIB | TRI 25 | -0.106 | 0.066 | 1583.287 | 1.000 |
| | | TRI 90 | -0.048 | 0.066 | 1583.287 | 1.000 |
| 20% | TRI 25 | TRI 90 | 0.058 | 0.066 | 1583.287 | 1.000 |
| 40% | BI 90 | BI 25 | 0.162 | 0.066 | 1583.287 | 0.138 |
| | | NO VIB | 0.046 | 0.066 | 1583.287 | 1.000 |
| | | TRI 25 | 0.060 | 0.066 | 1583.287 | 1.000 |
| | | TRI 90 | 0.120 | 0.066 | 1581.996 | 0.691 |
| 40% | BI 25 | NO VIB | -0.117 | 0.066 | 1583.287 | 0.764 |
| | | TRI 25 | -0.102 | 0.066 | 1583.287 | 1.000 |
| | | TRI 90 | -0.042 | 0.066 | 1581.996 | 1.000 |
| 40% | NO VIB | TRI 25 | 0.015 | 0.066 | 1583.287 | 1.000 |
| | | TRI 90 | 0.075 | 0.066 | 1581.996 | 1.000 |
| 40% | TRI 25 | TRI 90 | 0.060 | 0.066 | 1581.996 | 1.000 |
| 80% | BI 90 | BI 25 | 0.093 | 0.066 | 1583.287 | 1.000 |
| | | NO VIB | 0.199 | 0.066 | 1583.287 | 0.025 |
| | | TRI 25 | 0.103 | 0.066 | 1583.287 | 1.000 |
| | | TRI 90 | -0.115 | 0.066 | 1583.287 | 0.801 |
| 80% | BI 25 | NO VIB | 0.106 | 0.066 | 1583.287 | 1.000 |
| | | TRI 25 | 0.010 | 0.066 | 1583.287 | 1.000 |
| | | TRI 90 | -0.208 | 0.066 | 1583.287 | 0.016 |
| 80% | NO VIB | TRI 25 | -0.096 | 0.066 | 1583.287 | 1.000 |
| | | TRI 90 | -0.315 | 0.066 | 1583.287 | 0.000 |
| 80% | TRI 25 | TRI 90 | -0.218 | 0.066 | 1583.287 | 0.009 |

2.1.3.2 Stroke Patients

2.1.3.2.1 Tests of Fixed Main and Interaction Effects

| Effect | Numerator df | Denominator df | F | Sig. |
|---|--------------|----------------|---------|-------|
| Intercept | 1 | 4.997 | 104.735 | 0.000 |
| Vibration condition | 4 | 717.139 | 1.581 | 0.177 |
| Target Distance | 2 | 717.085 | 200.223 | 0.000 |
| Experimental Condition * Target Distance | 8 | 717.046 | 0.612 | 0.768 |

2.1.3.2.2 Pairwise Comparisons

| (I) | (J) | Mean Diff. (I-J) | Std. Error. | df | Sig.** |
|-----------------|-----|------------------|-------------|---------|--------|
| Target Distance | | | | | |
| 20% | 40% | -0.400 | 0.069 | 720.792 | 0.000 |
| | 80% | -1.342 | 0.069 | 714.442 | 0.000 |
| 40% | 80% | -0.942 | 0.069 | 716.125 | 0.000 |

2.1.4 Smoothness

2.1.4.1 Able-Bodied

2.1.4.1.1 Tests of Fixed Main and Interaction Effects

| Effect | Numerator df | Denominator df | F | Sig. |
|---|--------------|----------------|----------|-------|
| Intercept | 1 | 11.000 | 628.721 | 0.000 |
| Vibration condition | 4 | 1580.428 | 1.317 | 0.262 |
| Target Distance | 2 | 1580.461 | 1081.245 | 0.000 |
| Experimental Condition * Target Distance | 8 | 1580.405 | 0.703 | 0.689 |

2.1.4.1.2 Pairwise Comparisons

| (I) | (J) | Mean Diff. (I-J) | Std. Error. | df | Sig.** |
|-----------------|-----|------------------|-------------|----------|--------|
| Target Distance | | | | | |
| 20% | 40% | -0.076 | 0.003 | 1580.494 | 0.000 |
| | 80% | -0.117 | 0.003 | 1580.533 | 0.000 |
| 40% | 80% | -0.041 | 0.003 | 1580.363 | 0.000 |

2.1.4.2 Stroke Patients

2.1.4.2.1 Tests of Fixed Main and Interaction Effects

| Effect | Numerator df | Denominator df | F | Sig. |
|---|--------------|----------------|---------|-------|
| Intercept | 1 | 5.000 | 426.689 | 0.000 |
| Vibration condition | 4 | 773.725 | 3.049 | 0.016 |
| Target Distance | 2 | 773.658 | 335.994 | 0.000 |
| Experimental Condition * Target Distance | 8 | 773.567 | 1.018 | 0.421 |

2.1.4.2.2 Pairwise Comparisons

| (I) | (J) | Mean Diff. (I-J) | Std. Error. | df | Sig.** |
|----------------------------|--------|------------------|-------------|---------|--------|
| Vibration Condition | | | | | |
| BI 90 | BI 25 | -0.009 | 0.005 | 774.603 | 0.655 |
| | NO VIB | -0.011 | 0.005 | 774.387 | 0.221 |
| | TRI 25 | -0.011 | 0.005 | 774.265 | 0.287 |
| | TRI 90 | -0.017 | 0.005 | 774.872 | 0.007 |
| BI 25 | NO VIB | -0.002 | 0.005 | 772.982 | 1.000 |
| | TRI 25 | -0.002 | 0.005 | 772.898 | 1.000 |
| | TRI 90 | -0.008 | 0.005 | 773.701 | 1.000 |
| NO VIB | TRI 25 | 0.000 | 0.005 | 772.583 | 1.000 |
| | TRI 90 | -0.005 | 0.005 | 773.403 | 1.000 |
| TRI 25 | TRI 90 | -0.006 | 0.005 | 773.324 | 1.000 |
| Target Distance | | | | | |
| 20% | 40% | -0.057 | 0.004 | 774.574 | 0.000 |
| | 80% | -0.097 | 0.004 | 773.169 | 0.000 |
| 40% | 80% | -0.040 | 0.004 | 773.369 | 0.000 |

2.1.5 Movement Extension (Elbow Angle)

2.1.5.1 Able-Bodied

2.1.5.1.1 Tests of Fixed Main and Interaction Effects

| Effect | Numerator df | Denominator df | F | Sig. |
|---|--------------|----------------|-----------|-------|
| Intercept | 1 | 10.978 | 582.362 | 0.000 |
| Vibration condition | 4 | 1583.352 | 3.056 | 0.016 |
| Target Distance | 2 | 1583.357 | 14399.439 | 0.000 |
| Experimental Condition * Target Distance | 8 | 1583.342 | 0.856 | 0.553 |

2.1.5.1.2 Pairwise Comparisons

| (I) | (J) | Mean Diff. (I-J) | Std. Error. | df | Sig.** |
|----------------------------|--------|------------------|-------------|----------|--------|
| Vibration Condition | | | | | |
| BI 90 | BI 25 | -0.563 | 0.384 | 1583.692 | 1,000 |
| | NO VIB | -0.780 | 0.383 | 1583.261 | 0.418 |
| | TRI 25 | -0.827 | 0.380 | 1583.261 | 0.308 |
| | TRI 90 | -1.305 | 0.383 | 1583.650 | 0.007 |
| BI 25 | NO VIB | -0.216 | 0.383 | 1583.314 | 1.000 |
| | TRI 25 | -0.264 | 0.383 | 1583.314 | 1.000 |
| | TRI 90 | -0.741 | 0.384 | 1583.692 | 0.535 |
| NO VIB | TRI 25 | -0.047 | 0.382 | 1582.856 | 1.000 |
| | TRI 90 | -0.525 | 0.383 | 1583.261 | 1.000 |
| TRI 25 | TRI 90 | -0.478 | 0.383 | 1583.261 | 1.000 |
| Target Distance | | | | | |
| 20% | 40% | -14.940 | 0.297 | 1583.602 | 0.000 |
| | 80% | -49.095 | 0.297 | 1583.372 | 0.000 |
| 40% | 80% | -34.156 | 0.296 | 1583.101 | 0.000 |

2.1.5.2 Stroke Patients

2.1.5.2.1 Tests of Fixed Main and Interaction Effects

| Effect | Numerator df | Denominator df | F | Sig. |
|---|--------------|----------------|----------|-------|
| Intercept | 1 | 3.999 | 42.755 | 0.003 |
| Vibration condition | 4 | 637.695 | 10.090 | 0.000 |
| Target Distance | 2 | 637.621 | 1432.624 | 0.000 |
| Experimental Condition * Target Distance | 8 | 637.428 | 1.711 | 0.093 |

2.1.5.2.2 Pairwise Comparisons

| (I) | (J) | Mean Diff. (I-J) | Std. Error. | df | Sig.** |
|----------------------------|--------|------------------|-------------|---------|--------|
| Vibration Condition | | | | | |
| BI 90 | BI 25 | -2.217 | 0.779 | 637.907 | 0.046 |
| | NO VIB | -3.034 | 0.778 | 637.616 | 0.001 |
| | TRI 25 | -3.864 | 0.779 | 637.830 | 0.000 |
| | TRI 90 | 4.498 | 0.777 | 637.362 | 0.000 |
| BI 25 | NO VIB | -0.817 | 0.778 | 637.622 | 1.000 |

| | | | | | |
|------------------------|--------|---------|-------|---------|-------|
| | TRI 25 | -1.647 | 0.779 | 637.985 | 0.349 |
| | TRI 90 | 2.281 | 0.778 | 637.707 | 0.035 |
| NO VIB | TRI 25 | -0.830 | 0.777 | 637.564 | 1.000 |
| | TRI 90 | -1.464 | 0.776 | 637.305 | 0.596 |
| TRI 25 | TRI 90 | -0.634 | 0.777 | 637.635 | 1.000 |
| Target Distance | | | | | |
| 20% | 40% | -11.788 | 0.600 | 637.005 | 0.000 |
| | 80% | -31.971 | 0.604 | 637.997 | 0.000 |
| 40% | 80% | -20.182 | 0.604 | 638.104 | 0.000 |

2.1.6 Movement Extension (Normalized Elbow Angle)

2.1.6.1 Able-Bodied

2.1.6.1.1 Tests of Fixed Main and Interaction Effects

| Effect | Numerator df | Denominator df | F | Sig. |
|---|--------------|----------------|-------|-------|
| Intercept | 1 | 10.978 | 0.176 | 0.683 |
| Vibration condition | 4 | 1573.772 | 4.590 | 0.001 |
| Target Distance | 2 | 1573.777 | 5.297 | 0.005 |
| Experimental Condition * Target Distance | 8 | 1573.758 | 1.310 | 0.234 |

2.1.6.1.2 Pairwise Comparisons

| (I) | (J) | Mean Diff. (I-J) | Std. Error. | df | Sig.** |
|----------------------------|--------|------------------|-------------|----------|--------|
| Vibration Condition | | | | | |
| BI 90 | BI 25 | -0.829 | 1.324 | 1574.651 | 1.000 |
| | NO VIB | -1.411 | 1.320 | 1573.443 | 1.000 |
| | TRI 25 | -2.005 | 1.320 | 1573.443 | 1.000 |
| | TRI 90 | -5.221 | 1.321 | 1574.186 | 0.001 |
| BI 25 | NO VIB | -0.581 | 1.322 | 1573.918 | 1.000 |
| | TRI 25 | -1.176 | 1.322 | 1573.918 | 1.000 |
| | TRI 90 | -4.392 | 1.324 | 1574.651 | 0.009 |
| NO VIB | TRI 25 | -0.594 | 1.319 | 1572.683 | 1.000 |
| | TRI 90 | -3.810 | 1.320 | 1573.443 | 0.040 |
| TRI 25 | TRI 90 | -3.216 | 1.320 | 1573.443 | 0.150 |
| Target Distance | | | | | |
| 20% | 40% | -1.920 | 1.024 | 1574.319 | 0.183 |
| | 80% | 1.393 | 1.024 | 1573.875 | 0.521 |
| 40% | 80% | 3.313 | 1.022 | 1573.141 | 0.004 |

2.1.6.2 Stroke Patients

2.1.6.2.1 Tests of Fixed Main and Interaction Effects

| Effect | Numerator df | Denominator df | F | Sig. |
|---|--------------|----------------|-------|-------|
| Intercept | 1 | 3.967 | 0.150 | 0.719 |
| Vibration condition | 4 | 569.535 | 5.794 | 0.000 |
| Target Distance | 2 | 569.513 | 0.021 | 0.980 |
| Experimental Condition * Target Distance | 8 | 569.455 | 0.275 | 0.974 |

2.1.6.2.2 Pairwise Comparisons

| (I) | (J) | Mean Diff. (I-J) | Std. Error. | df | Sig.** |
|----------------------------|--------|------------------|-------------|---------|--------|
| Vibration Condition | | | | | |
| BI 90 | BI 25 | -9.337 | 4.435 | 572.381 | 0.357 |
| | NO VIB | -8.448 | 4.423 | 571.497 | 0.566 |
| | TRI 25 | -16.874 | 4.433 | 572.349 | 0.002 |
| | TRI 90 | -18.940 | 4.429 | 573.654 | 0.000 |
| BI 25 | NO VIB | 0.889 | 4.408 | 566.427 | 1.000 |

| | | | | | |
|--------|--------|---------|-------|---------|-------|
| | TRI 25 | -7.537 | 4.420 | 567.513 | 0.887 |
| | TRI 90 | -9.603 | 4.415 | 568.807 | 0.300 |
| NO VIB | TRI 25 | -8.426 | 4.408 | 566.538 | 0.564 |
| | TRI 90 | -10.492 | 4.404 | 567.834 | 0.175 |
| TRI 25 | TRI 90 | -2.066 | 4.415 | 568.867 | 1.000 |

2.1.7 Velocity Peak

2.1.7.1 Able-Bodied

2.1.7.1.1 Tests of Fixed Main and Interaction Effects

| Effect | Numerator df | Denominator df | F | Sig. |
|---|--------------|----------------|----------|-------|
| Intercept | 1 | 10.984 | 413.795 | 0.000 |
| Vibration condition | 4 | 1588.304 | 0.294 | 0.882 |
| Target Distance | 2 | 1588.310 | 3739.563 | 0.000 |
| Experimental Condition * Target Distance | 8 | 1588.298 | 0.564 | 0.808 |

2.1.7.1.2 Pairwise Comparisons

| (I) | (J) | Mean Diff. (I-J) | Std. Error. | df | Sig.** |
|-----------------|-----|------------------|-------------|----------|--------|
| Target Distance | | | | | |
| 20% | 40% | -23.223 | 0.732 | 1588.203 | 0.000 |
| | 80% | -62.582 | 0.732 | 1588.297 | 0.000 |
| 40% | 80% | -39.358 | 0.731 | 1588.432 | 0.000 |

2.1.7.2 Stroke Patients

2.1.7.2.1 Tests of Fixed Main and Interaction Effects

| Effect | Numerator df | Denominator df | F | Sig. |
|---|--------------|----------------|---------|-------|
| Intercept | 1 | 5.002 | 404.970 | 0.000 |
| Vibration condition | 4 | 743.562 | 1.836 | 0.120 |
| Target Distance | 2 | 743.499 | 191.934 | 0.000 |
| Experimental Condition * Target Distance | 8 | 743.482 | 1.095 | 0.364 |

2.1.7.2.2 Pairwise Comparisons

| (I) | (J) | Mean Diff. (I-J) | Std. Error. | df | Sig.** |
|-----------------|-----|------------------|-------------|---------|--------|
| Target Distance | | | | | |
| 20% | 40% | -5.762 | 0.870 | 746.520 | 0.000 |
| | 80% | -16.809 | 0.872 | 741.464 | 0.000 |
| 40% | 80% | -11.046 | 0.872 | 742.620 | 0.000 |

2.1.8 Time to Velocity Peak

2.1.8.1 Able-Bodied

2.1.8.1.1 Tests of Fixed Main and Interaction Effects

| Effect | Numerator df | Denominator df | F | Sig. |
|---|--------------|----------------|---------|-------|
| Intercept | 1 | 11.000 | 285,567 | 0.000 |
| Vibration condition | 4 | 1563.929 | 0.526 | 0.717 |
| Target Distance | 2 | 1563.933 | 18.625 | 0.000 |
| Experimental Condition * Target Distance | 8 | 1563.915 | 0.658 | 0.729 |

2.1.8.1.2 Pairwise Comparisons

| (I) | (J) | Mean Diff. (I-J) | Std. Error. | df | Sig.** |
|-----------------|-----|------------------|-------------|----------|--------|
| Target Distance | | | | | |
| 20% | 40% | -0.012 | 0.008 | 1564.532 | 0.394 |
| | 80% | -0.47 | 0.008 | 1564.101 | 0.000 |
| 40% | 80% | -0.35 | 0.008 | 1563.174 | 0.000 |

2.1.8.2 Stroke Patients

2.1.8.2.1 Tests of Fixed Main and Interaction Effects

| Effect | Numerator df | Denominator df | F | Sig. |
|---|--------------|----------------|--------|-------|
| Intercept | 1 | 5.001 | 38.112 | 0.002 |
| Vibration condition | 4 | 761.922 | 0.636 | 0.637 |
| Target Distance | 2 | 761.830 | 10.129 | 0.000 |
| Experimental Condition * Target Distance | 8 | 761.770 | 1.750 | 0.084 |

2.1.8.2.2 Pairwise Comparisons

| (I) | (J) | Mean Diff. (I-J) | Std. Error. | df | Sig.** |
|-----------------|-----|------------------|-------------|---------|--------|
| Target Distance | | | | | |
| 20% | 40% | -0.012 | 0.029 | 760.814 | 1.000 |
| | 80% | -1.07 | 0.029 | 762.751 | 0.001 |
| 40% | 80% | -0.119 | 0.029 | 762.104 | 0.000 |

2.1.9 Normalized Time to Velocity Peak**2.1.9.1 Able-Bodied****2.1.9.1.1 Tests of Fixed Main and Interaction Effects**

| Effect | Numerator df | Denominator df | F | Sig. |
|---|--------------|----------------|--------|-------|
| Intercept | 1 | 10.980 | 26.119 | 0.000 |
| Vibration condition | 4 | 1581.487 | 2.184 | 0.069 |
| Target Distance | 2 | 1581.487 | 3.041 | 0.048 |
| Experimental Condition * Target Distance | 8 | 1581.478 | 0.940 | 0.482 |

2.1.9.1.2 Pairwise Comparisons

| (I) | (J) | Mean Diff. (I-J) | Std. Error. | df | Sig.** |
|-----------------|-----|------------------|-------------|----------|--------|
| Target Distance | | | | | |
| 20% | 40% | 9.669 | 4.612 | 1581.474 | 0.109 |
| | 80% | 10.028 | 4.610 | 1581.558 | 0.089 |
| 40% | 80% | 0.360 | 4.603 | 1581.431 | 1.000 |

2.1.9.2 Stroke Patients**2.1.9.2.1 Tests of Fixed Main and Interaction Effects**

| Effect | Numerator df | Denominator df | F | Sig. |
|---|--------------|----------------|-------|-------|
| Intercept | 1 | 4.967 | 3.154 | 0.136 |
| Vibration condition | 4 | 724.259 | 1.736 | 0.140 |
| Target Distance | 2 | 724.189 | 4.944 | 0.007 |
| Experimental Condition * Target Distance | 8 | 724.216 | 0.801 | 0.602 |

2.1.9.2.2 Pairwise Comparisons

| (I) | (J) | Mean Diff. (I-J) | Std. Error. | df | Sig.** |
|-----------------|-----|------------------|-------------|---------|--------|
| Target Distance | | | | | |
| 20% | 40% | -8.148 | 8.539 | 726.344 | 1.000 |
| | 80% | -26.308 | 8.561 | 723.059 | 0.007 |
| 40% | 80% | -18.160 | 8.563 | 723.253 | 0.103 |

2.2 Fitts' Law Parameters

2.2.1 The Ratio Between the Expected Over the Prescribed Target Distance (De/D)

2.2.1.1 Able-Bodied

2.2.1.1.1 Tests of Fixed Main and Interaction Effects

| Effect | Numerator df | Denominator df | F | Sig. |
|---|--------------|----------------|----------|-------|
| Intercept | 1 | 10.984 | 1082.527 | 0.000 |
| Vibration condition | 4 | 1541.726 | 5.429 | 0.000 |
| Target Distance | 2 | 1541.726 | 376.753 | 0.000 |
| Experimental Condition * Target Distance | 8 | 1541.726 | 1.178 | 0.309 |

2.2.1.1.2 Pairwise Comparisons

| (I) | (J) | Mean Diff. (I-J) | Std. Error. | df | Sig.** |
|---------------------|--------|------------------|-------------|----------|--------|
| Vibration Condition | | | | | |
| BI 90 | BI 25 | -0.016 | 0.007 | 1541.726 | 0.228 |
| | NO VIB | -0.010 | 0.007 | 1541.726 | 1.000 |
| | TRI 25 | -0.014 | 0.007 | 1541.726 | 0.454 |
| | TRI 90 | -0.033 | 0.007 | 1541.726 | 0.000 |
| BI 25 | NO VIB | 0.006 | 0.007 | 1541.726 | 1.000 |
| | TRI 25 | 0.002 | 0.007 | 1541.726 | 1.000 |
| | TRI 90 | -0.016 | 0.007 | 1541.726 | 0.238 |
| NO VIB | TRI 25 | -0.004 | 0.007 | 1541.726 | 1.000 |
| | TRI 90 | -0.022 | 0.007 | 1541.726 | 0.018 |
| TRI 25 | TRI 90 | -0.018 | 0.007 | 1541.726 | 0.112 |

| Target Distance | | | | | |
|-----------------|-----|--------|-------|----------|-------|
| 20% | 40% | -0.118 | 0.006 | 1541.726 | 0.000 |
| | 80% | -0.142 | 0.006 | 1541.726 | 0.000 |
| 40% | 80% | -0.024 | 0.006 | 1541.726 | 0.000 |

2.2.1.2 Stroke Patients

2.2.1.2.1 Tests of Fixed Main and Interaction Effects

| Effect | Numerator df | Denominator df | F | Sig. |
|---|--------------|----------------|---------|-------|
| Intercept | 1 | 4.991 | 267.000 | 0.000 |
| Vibration condition | 4 | 768.710 | 16.673 | 0.000 |
| Target Distance | 2 | 768.718 | 36.477 | 0.000 |
| Experimental Condition * Target Distance | 8 | 768.705 | 2.096 | 0.034 |

2.2.1.2.2 Pairwise Comparisons

| (I) | (J) | Mean Diff. (I-J) | Std. Error. | df | Sig.** | |
|--|--------|------------------|-------------|---------|---------|-------|
| Vibration Condition | | | | | | |
| BI 90 | BI 25 | -0.029 | 0.013 | 769.264 | 0.238 | |
| | NO VIB | -0.047 | 0.013 | 768.348 | 0.002 | |
| | TRI 25 | -0.072 | 0.013 | 768.348 | 0.000 | |
| | TRI 90 | -0.094 | 0.013 | 768.348 | 0.000 | |
| BI 25 | NO VIB | -0.018 | 0.013 | 769.264 | 1.000 | |
| | TRI 25 | -0.043 | 0.013 | 769.264 | 0.007 | |
| | TRI 90 | -0.065 | 0.013 | 769.264 | 0.000 | |
| NO VIB | TRI 25 | -0.026 | 0.013 | 768.348 | 0.445 | |
| | TRI 90 | -0.047 | 0.013 | 768.348 | 0.002 | |
| TRI 25 | TRI 90 | -0.022 | 0.013 | 768.348 | 0.892 | |
| Target Distance | | | | | | |
| 20% | 40% | -0.052 | 0.010 | 768.903 | 0.000 | |
| | 80% | -0.083 | 0.010 | 768.903 | 0.000 | |
| 40% | 80% | -0.031 | 0.010 | 768.348 | 0.006 | |
| Vibration Condition * Target Distance | | | | | | |
| 20% | BI 90 | BI 25 | -0.030 | 0.022 | 770.965 | 1.000 |

| | | | | | | |
|-----|--------|--------|--------|-------|---------|-------|
| | | NO VIB | -0.052 | 0.022 | 768.348 | 0.177 |
| | | TRI 25 | -0.093 | 0.022 | 768.348 | 0.000 |
| | | TRI 90 | -0.149 | 0.022 | 768.348 | 0.000 |
| 20% | BI 25 | NO VIB | -0.022 | 0.022 | 770.965 | 1.000 |
| | | TRI 25 | -0.062 | 0.022 | 770.965 | 0.049 |
| | | TRI 90 | -0.119 | 0.022 | 770.965 | 0.000 |
| 20% | NO VIB | TRI 25 | -0.041 | 0.022 | 768.348 | 0.656 |
| | | TRI 90 | -0.097 | 0.022 | 768.348 | 0.000 |
| 20% | TRI 25 | TRI 90 | -0.056 | 0.022 | 768.348 | 0.104 |
| 40% | BI 90 | BI 25 | -0.038 | 0.022 | 768.348 | 0.804 |
| | | NO VIB | -0.067 | 0.022 | 768.348 | 0.023 |
| | | TRI 25 | -0.087 | 0.022 | 768.348 | 0.001 |
| | | TRI 90 | -0.085 | 0.022 | 768.348 | 0.001 |
| 40% | BI 25 | NO VIB | -0.029 | 0.022 | 768.348 | 1.000 |
| | | TRI 25 | -0.049 | 0.022 | 768.348 | 0.274 |
| | | TRI 90 | -0.047 | 0.022 | 768.348 | 0.337 |
| 40% | NO VIB | TRI 25 | -0.020 | 0.022 | 768.348 | 1.000 |
| | | TRI 90 | -0.018 | 0.022 | 768.348 | 1.000 |
| 40% | TRI 25 | TRI 90 | 0.002 | 0.022 | 768.348 | 1.000 |
| 80% | BI 90 | BI 25 | -0.017 | 0.022 | 768.348 | 1.000 |
| | | NO VIB | -0.021 | 0.022 | 768.348 | 1.000 |
| | | TRI 25 | -0.037 | 0.022 | 768.348 | 0.914 |
| | | TRI 90 | -0.047 | 0.022 | 768.348 | 0.317 |
| 80% | BI 25 | NO VIB | -0.003 | 0.022 | 768.348 | 1.000 |
| | | TRI 25 | -0.020 | 0.022 | 768.348 | 1.000 |
| | | TRI 90 | -0.030 | 0.022 | 768.348 | 1.000 |
| 80% | NO VIB | TRI 25 | -0.016 | 0.022 | 768.348 | 1.000 |
| | | TRI 90 | -0.026 | 0.022 | 768.348 | 1.000 |
| 80% | TRI 25 | TRI 90 | -0.010 | 0.022 | 768.348 | 1.000 |

2.2.2 The Normalized Movement Time

2.2.2.1 Able-Bodied

2.2.2.1.1 Tests of Fixed Main and Interaction Effects

| Effect | Numerator df | Denominator df | F | Sig. |
|---|--------------|----------------|-------|-------|
| Intercept | 1 | 10.886 | 2.652 | 0.132 |
| Vibration condition | 4 | 1576.021 | 1.762 | 0.134 |
| Target Distance | 2 | 1576.021 | 3.962 | 0.019 |
| Experimental Condition * Target Distance | 8 | 1576.021 | 1.201 | 0.295 |

2.2.2.1.2 Pairwise Comparisons

| (I) | (J) | Mean Diff. (I-J) | Std. Error. | df | Sig.** |
|-----------------|-----|------------------|-------------|----------|--------|
| Target Distance | | | | | |
| 20% | 40% | 2.837 | 1.373 | 1576.021 | 0.117 |
| | 80% | 3.691 | 1.373 | 1576.021 | 0.022 |
| 40% | 80% | 0.854 | 1.373 | 1576.021 | 1.000 |

2.2.2.2 Stroke Patients

2.2.2.2.1 Tests of Fixed Main and Interaction Effects

| Effect | Numerator df | Denominator df | F | Sig. |
|---|--------------|----------------|--------|-------|
| Intercept | 1 | 4.988 | 0.181 | 0.688 |
| Vibration condition | 4 | 707.375 | 7.525 | 0.000 |
| Target Distance | 2 | 707.385 | 12.473 | 0.000 |
| Experimental Condition * Target Distance | 8 | 707.367 | 1.978 | 0.047 |

2.2.2.2.2 Pairwise Comparisons

| (I) | (J) | Mean Diff. (I-J) | Std. Error. | df | Sig.** |
|---------------------|--------|------------------|-------------|---------|--------|
| Vibration Condition | | | | | |
| BI 90 | BI 25 | 5.169 | 3.062 | 708.598 | 0.918 |
| | NO VIB | 10.142 | 3.055 | 706.571 | 0.009 |
| | TRI 25 | 14.298 | 3.055 | 706.571 | 0.000 |
| | TRI 90 | 13.070 | 3.055 | 706.571 | 0.000 |
| BI 25 | NO VIB | 4.973 | 3.062 | 708.598 | 1.000 |

| | | | | | | |
|--|--------|--------|---------|-------|---------|-------|
| | | TRI 25 | 9.129 | 3.062 | 708.598 | 0.030 |
| | | TRI 90 | 7.901 | 3.062 | 708.598 | 0.101 |
| NO VIB | | TRI 25 | 4.157 | 3.055 | 706.571 | 1.000 |
| | | TRI 90 | 2.928 | 3.055 | 706.571 | 1.000 |
| TRI 25 | | TRI 90 | -1.228 | 3.055 | 706.571 | 1.000 |
| Target Distance | | | | | | |
| 20% | | 40% | -2.594 | 2.369 | 707.793 | 0.822 |
| | | 80% | -11.291 | 2.369 | 707.793 | 0.000 |
| 40% | | 80% | -8.697 | 2.366 | 706.571 | 0.001 |
| Vibration Condition * Target Distance | | | | | | |
| 20% | BI 90 | BI 25 | 0.124 | 5.326 | 712.517 | 1.000 |
| | | NO VIB | 3.294 | 5.291 | 706.571 | 1.000 |
| | | TRI 25 | 12.553 | 5.291 | 706.571 | 0.179 |
| | | TRI 90 | 8.836 | 5.291 | 706.571 | 0.954 |
| 20% | BI 25 | NO VIB | 3.170 | 5.326 | 712.517 | 1.000 |
| | | TRI 25 | 12.428 | 5.326 | 712.517 | 0.199 |
| | | TRI 90 | 8.712 | 5.326 | 712.517 | 1.000 |
| 20% | NO VIB | TRI 25 | 9.258 | 5.291 | 706.571 | 0.806 |
| | | TRI 90 | 5.542 | 5.291 | 706.571 | 1.000 |
| 20% | TRI 25 | TRI 90 | -3.717 | 5.291 | 706.571 | 1.000 |
| 40% | BI 90 | BI 25 | 0.449 | 5.291 | 706.571 | 1.000 |
| | | NO VIB | 1.116 | 5.291 | 706.571 | 1.000 |
| | | TRI 25 | 4.960 | 5.291 | 706.571 | 1.000 |
| | | TRI 90 | 6.873 | 5.291 | 706.571 | 1.000 |
| 40% | BI 25 | NO VIB | 0.667 | 5.291 | 706.571 | 1.000 |
| | | TRI 25 | 4.511 | 5.291 | 706.571 | 1.000 |
| | | TRI 90 | 6.424 | 5.291 | 706.571 | 1.000 |
| 40% | NO VIB | TRI 25 | 3.844 | 5.291 | 706.571 | 1.000 |
| | | TRI 90 | 5.757 | 5.291 | 706.571 | 1.000 |
| 40% | TRI 25 | TRI 90 | 1.913 | 5.291 | 706.571 | 1.000 |
| 80% | BI 90 | BI 25 | 14.934 | 5.291 | 706.571 | 0.049 |
| | | NO VIB | 26.015 | 5.291 | 706.571 | 0.000 |
| | | TRI 25 | 25.382 | 5.291 | 706.571 | 0.000 |
| | | TRI 90 | 23.501 | 5.291 | 706.571 | 0.000 |

| | | | | | | |
|-----|--------|--------|--------|-------|---------|-------|
| 80% | BI 25 | NO VIB | 11.081 | 5.291 | 706.571 | 0.366 |
| | | TRI 25 | 10.448 | 5.291 | 706.571 | 0.487 |
| | | TRI 90 | 8.567 | 5.291 | 706.571 | 1.000 |
| 80% | NO VIB | TRI 25 | -0.633 | 5.291 | 706.571 | 1.000 |
| | | TRI 90 | -2.514 | 5.291 | 706.571 | 1.000 |
| 80% | TRI 25 | TRI 90 | -1.881 | 5.291 | 706.571 | 1.000 |

2.2.3 The Ratio Between the Effective and Prescribed Index of Difficulty (IDe/ID)

2.2.3.1 Able-Bodied

2.2.3.1.1 Tests of Fixed Main and Interaction Effects

| Effect | Numerator df | Denominator df | F | Sig. |
|---|--------------|----------------|---------|-------|
| Intercept | 1 | 11.000 | 881.032 | 0.000 |
| Vibration condition | 4 | 514 | 1.322 | 0.261 |
| Target Distance | 2 | 514 | 120.656 | 0.000 |
| Experimental Condition * Target Distance | 8 | 514 | 0.717 | 0.677 |

2.2.3.1.2 Pairwise Comparisons

| (I) | (J) | Mean Diff. (I-J) | Std. Error. | df | Sig.** |
|-----------------|-----|------------------|-------------|---------|--------|
| Target Distance | | | | | |
| 20% | 40% | -0.413 | 0.069 | 514.000 | 0.000 |
| | 80% | -1.068 | 0.069 | 514.000 | 0.000 |
| 40% | 80% | -0.655 | 0.069 | 514.000 | 0.000 |

2.2.3.2 Stroke Patients

2.2.3.2.1 Tests of Fixed Main and Interaction Effects

| Effect | Numerator df | Denominator df | F | Sig. |
|---|--------------|----------------|---------|-------|
| Intercept | 1 | 5.000 | 520.325 | 0.000 |
| Vibration condition | 4 | 250.000 | 1.420 | 0.228 |
| Target Distance | 2 | 250 | 4.036 | 0.019 |
| Experimental Condition * Target Distance | 8 | 250 | 1.191 | 0.305 |

2.2.3.2.2 Pairwise Comparisons

| (I) | (J) | Mean Diff. (I-J) | Std. Error. | df | Sig.** |
|-----------------|-----|------------------|-------------|---------|--------|
| Target Distance | | | | | |
| 20% | 40% | 0.103 | 0.060 | 250.000 | 0.260 |
| | 80% | 0.169 | 0.060 | 250.000 | 0.016 |
| 40% | 80% | 0.066 | 0.060 | 250.000 | 0.819 |