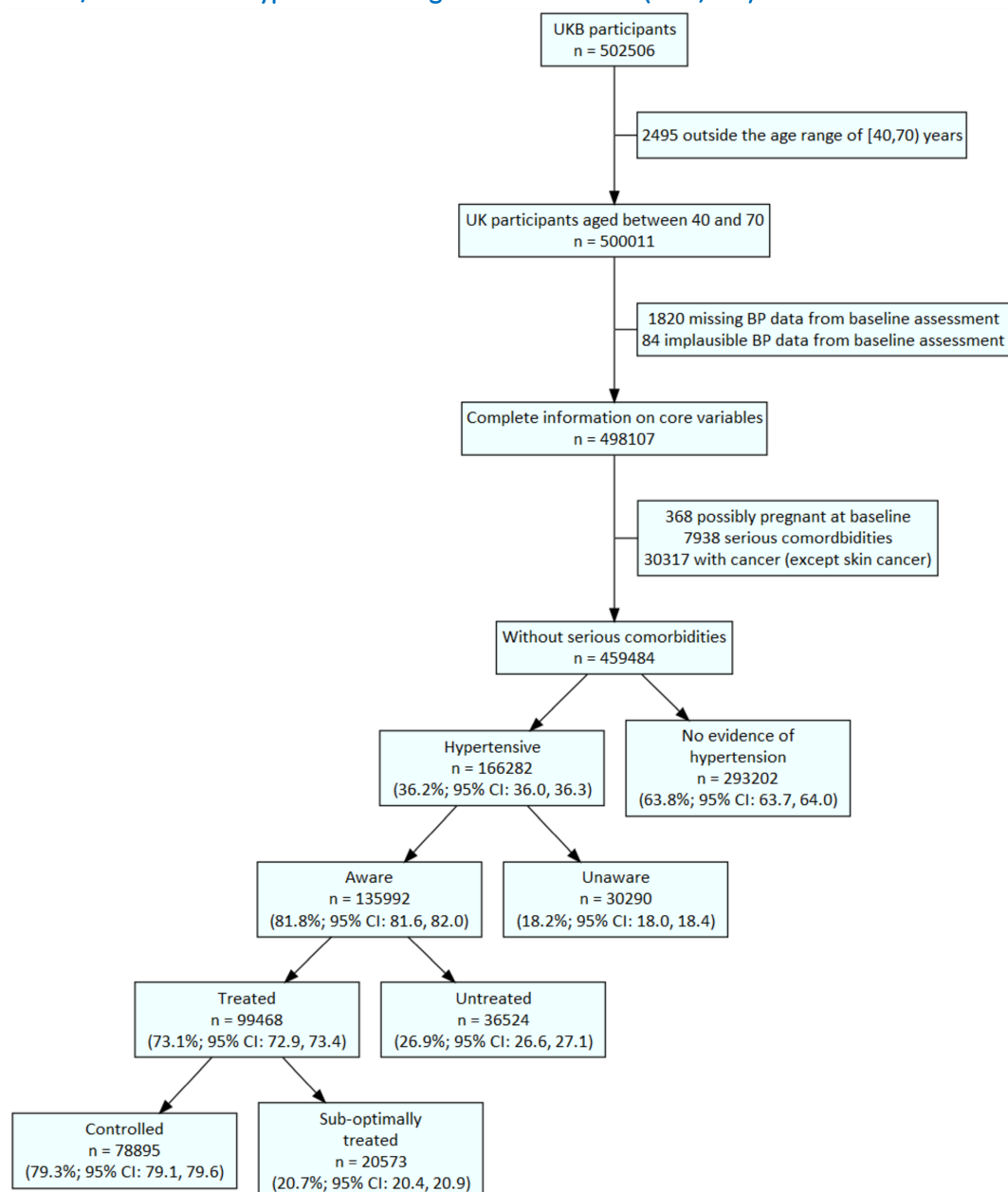


Supplementary Figure 1. Flowchart illustrating selection of analytic dataset, using BP threshold of BP 160/100 to define hypertension diagnosis and control (n 99,468)



Missing BP data comprises: having fewer than 2 BP measurements at baseline assessment, or missing responses to questions on hypertension history. The following BP values were deemed implausible (defined as previously reported⁽¹⁵⁾): systolic BP < 70 mmHg or \geq 270 mmHg, diastolic BP < 50 mmHg or \geq 150 mmHg. Hypertension was defined as self-report of hypertensive medication use, or self-report of a prior diagnosis of hypertension, or mean BP \geq 160/100 mmHg at baseline assessment. Awareness was defined as report of a prior diagnosis of hypertension by a health professional, among those who were hypertensive. Treatment was defined as report of hypertensive medication among those who were aware. Control was defined as mean BP < 160/100 mmHg at baseline assessment, among those who were treated.