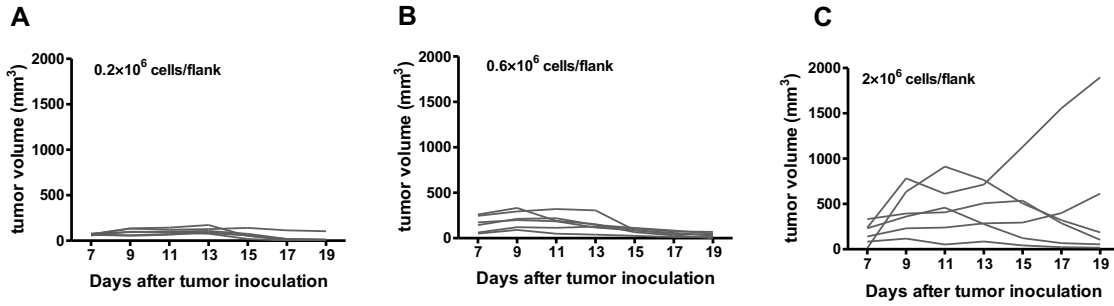


Supplementary Fig 1



Supplementary Figure 1. In vivo growth failure of PD-L1^{KO} MB49 bladder cancer cells. *In vivo* challenge of 0.2 x 10⁶ (A), 0.6 x 10⁶ (B), and 2 x 10⁶ (C) cells PD-L1^{KO} MB49 cells (clone 18) all failed to reliably produce SQ tumors in WT C57Bl6 mice.