

Supplementary Information:

N*-(1,3,4-oxadiazol-2-yl)benzamides as antibacterial agents against *Neisseria gonorrhoeae

George A. Naclerio ¹, Nader S. Abutaleb ², Marwa Alhashimi ², Mohamed N. Seleem ^{2,3,4}, and Herman O. Sintim ^{1,4},

¹ Chemistry Department, Institute for Drug Discovery, Purdue University, West Lafayette, IN 47907, United States; gnacleri@purdue.edu (G.A.N.); hsintim@purdue.edu (H.O.S.)

² Department of Comparative Pathobiology, Purdue University College of Veterinary Medicine, West Lafayette, Indiana 47907, United States; nabutale@purdue.edu (N.S.A.); alhashim@purdue.edu (M.A); mseleem@purdue.edu (M.N.S.)

³ Department of Biomedical Sciences and Pathobiology, Virginia-Maryland College of Veterinary Medicine, Virginia Polytechnic Institute and State University, Blacksburg, VA 24060, United States; seleem@vt.edu (M.N.S)

⁴ Purdue Institute of Inflammation, Immunology, and Infectious Disease, West Lafayette, Indiana 47907, United States; mseleem@purdue.edu (M.N.S.); hsintim@purdue.edu (H.O.S.)

Table of Contents:

I. Description of Bacterial Isolates Used for Study

II. Antibacterial activity of *N*-(1,3,4-oxadiazol-2-yl)benzamides against *N. gonorrhoeae* in presence of serum

III. ¹H, ¹³C, and ¹⁹F Spectra of Analogs

I. Table S1. Bacterial Isolates Used for Study:

Bacterial strains	Source/Description
<i>Neisseria gonorrhoeae</i> 181	CDC isolate. Resistant to tetracycline and azithromycin.
<i>Neisseria gonorrhoeae</i> 165	CDC isolate. Resistant to tetracycline, penicillin, and ciprofloxacin.
<i>Neisseria gonorrhoeae</i> 166	CDC isolate. Resistant to tetracycline, penicillin, and ciprofloxacin.
<i>Neisseria gonorrhoeae</i> 194	CDC isolate. Resistant to penicillin, not susceptible to ceftriaxone, cefixime and cefpodoxime.
<i>Neisseria gonorrhoeae</i> 197	CDC isolate. Resistant to tetracycline, penicillin, and ciprofloxacin.
<i>Neisseria gonorrhoeae</i> 200	CDC isolate. Resistant to tetracycline, penicillin, and ciprofloxacin.
<i>Neisseria gonorrhoeae</i> WHO L	WHO reference strain. Isolated in Asia, 1996. Resistant to tetracycline, penicillin, and ciprofloxacin.
<i>Staphylococcus aureus</i> ATCC 25923	Clinical isolate. Quality control strain for media testing and susceptibility testing.
MRSA NRS384 (USA300)	Isolated from a wound in Mississippi, USA. Community-acquired MRSA strain. Resistant to erythromycin and tetracycline.
<i>Enterococcus faecalis</i> ATCC 29212	Isolated from urine. Quality control strain for food testing, media testing and susceptibility testing.
<i>Enterococcus faecalis</i> ATCC 51575	Resistant to gentamicin, streptomycin, and vancomycin Sensitive to teichoplanin. Positive for <i>vanB</i>
<i>Enterococcus faecalis</i> ATCC 51299	Isolated from peritoneal fluid, Missouri, USA. Resistant to vancomycin. Sensitive to Teicoplanin. Positive for <i>vanB</i>
<i>Enterococcus faecium</i> ATCC 700221	Isolated from human faeces, Connecticut, USA. Resistant to Vancomycin and Teicoplanin. Positive for <i>vanA</i> .
<i>Escherichia coli</i> BW 25113	Obtained from the Coli Genetic Stock Center (CGSC), Yale University, USA. Wild-type strain.
<i>Escherichia coli</i> JW 55031	Obtained from the Coli Genetic Stock Center (CGSC), Yale University, USA. <i>tolC</i> -mutant. Deficient in AcrAB-TolC efflux pump.

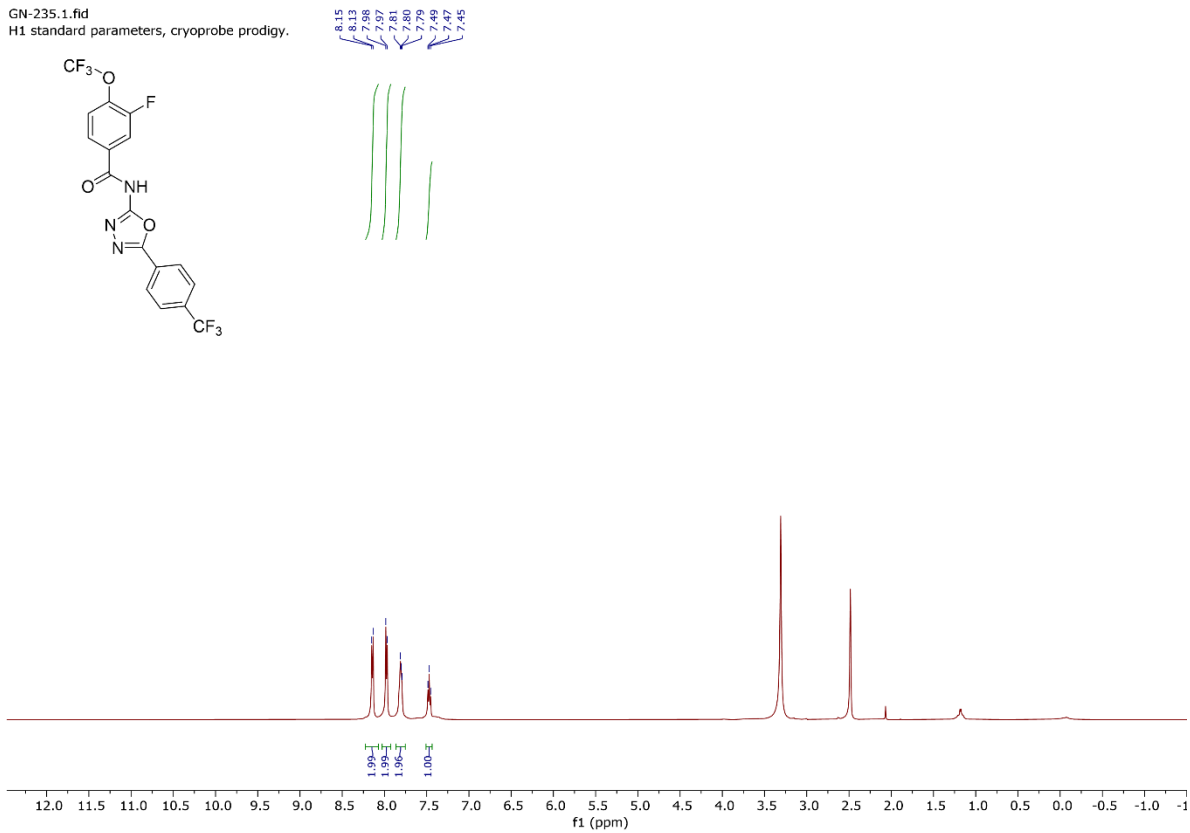
II. Table S2. MICs ($\mu\text{g/mL}$) of **HSGN-235, -237, -238** and control antibiotics against *N. gonorrhoeae* CDC 165 in presence of FBS. The experiment was repeated for 3 independent times.

Compound/Control Antibiotic	No FBS	1% FBS	5% FBS	10% FBS
HSGN-235	2	2	4	8
HSGN-237	0.06	0.125	1	4
HSGN-238	0.125	0.25	1	1
Azithromycin	1	1	1	2
Tetracycline	4	2	4	4

III. ^1H , ^{13}C , and ^{19}F NMR Spectra of Analogs:

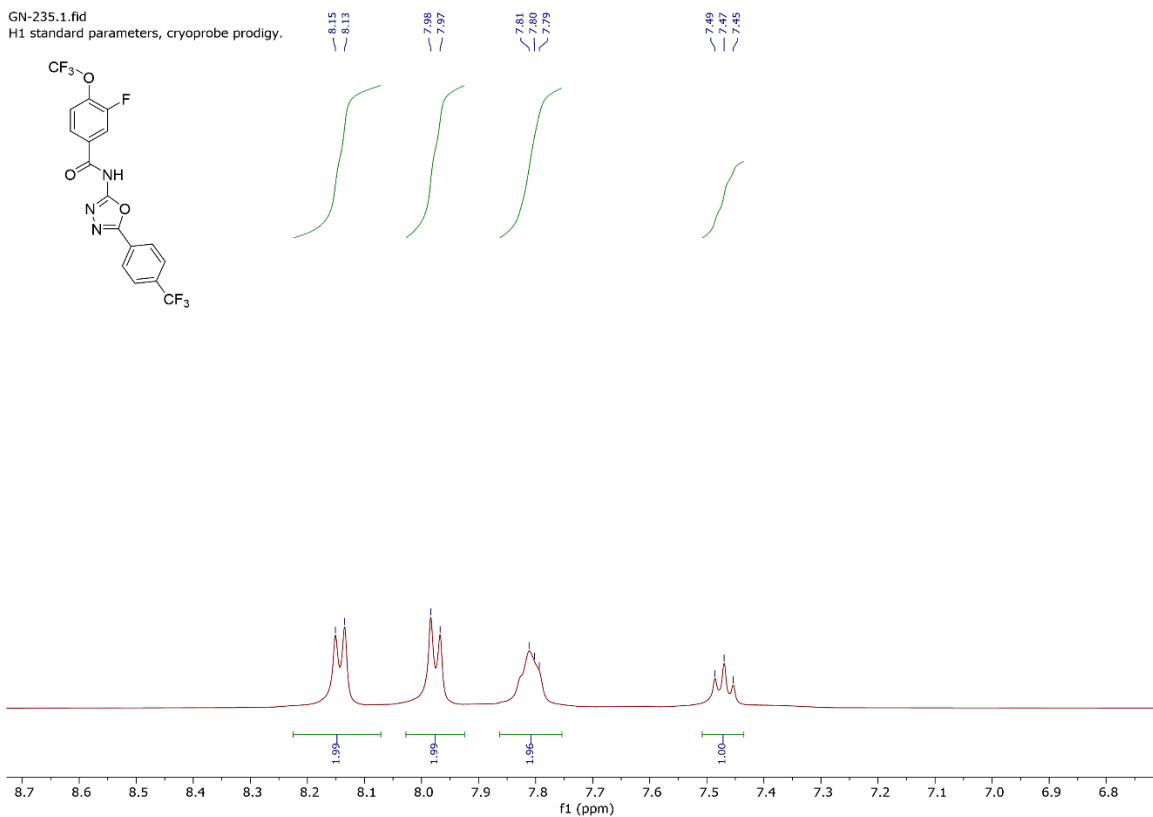
GN-235.1.fid

H1 standard parameters, cryoprobe prodigy.

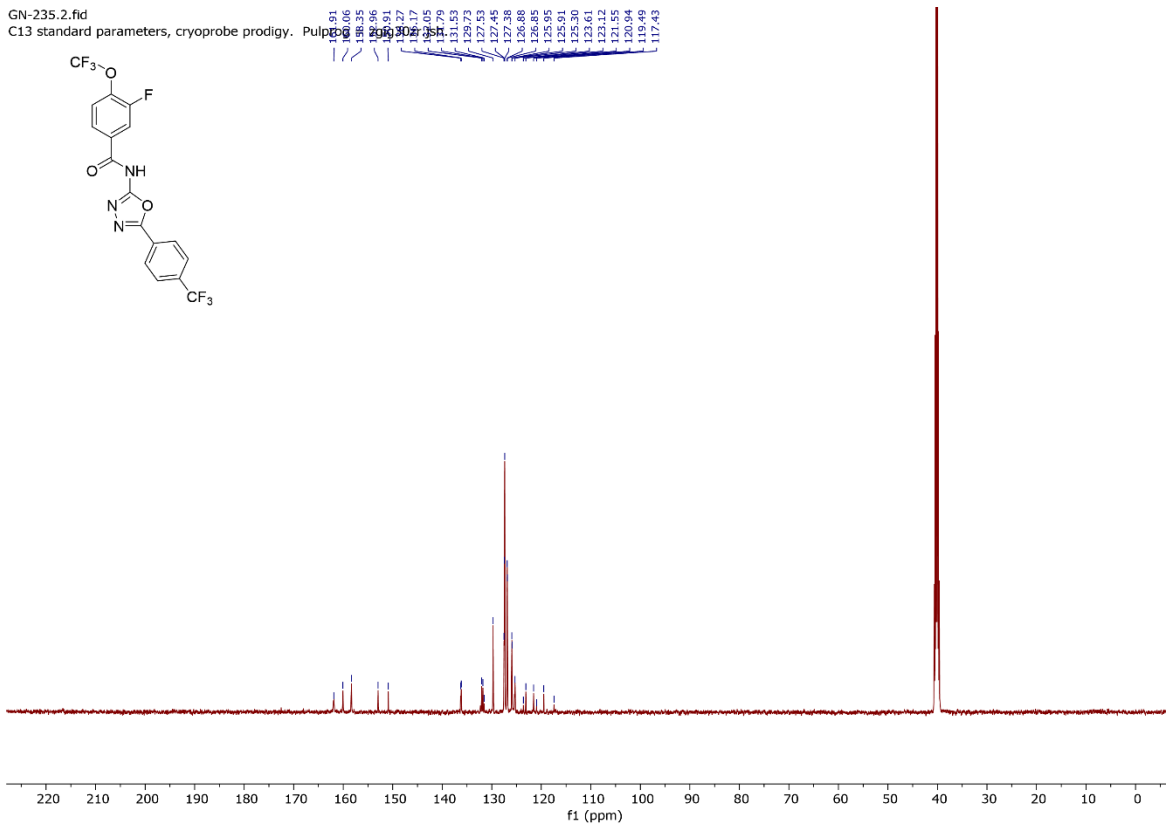


GN-235.1.fid

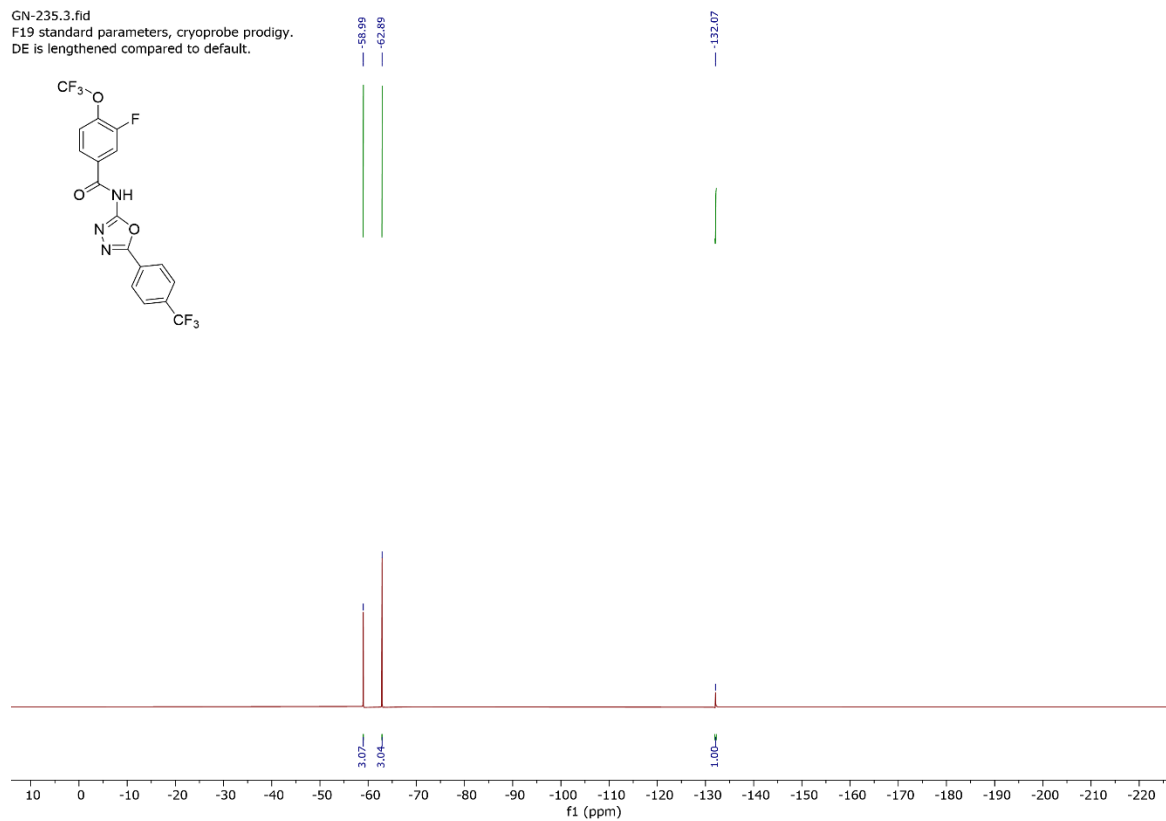
H1 standard parameters, cryoprobe prodigy.



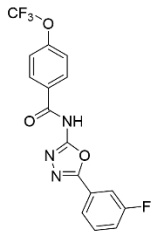
GN-235.2.fid
C13 standard parameters, cryoprobe prodigy. Pulprog



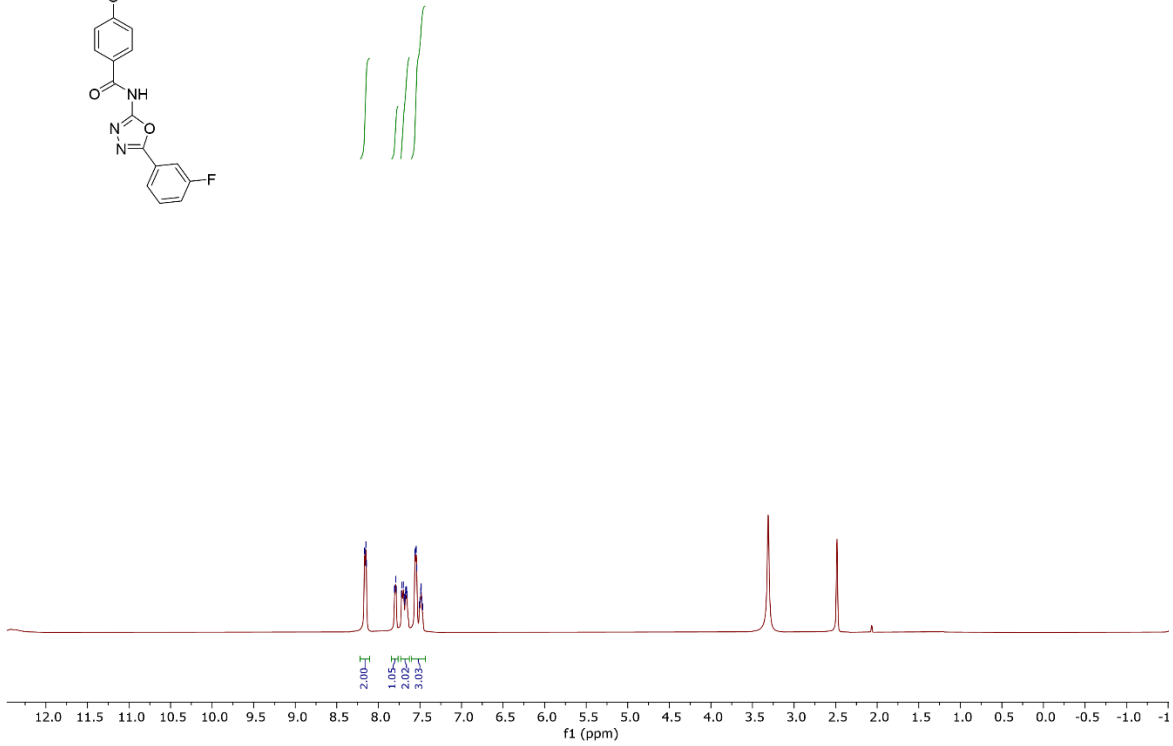
GN-235.3.fid
F19 standard parameters, cryoprobe prodigy.
DE is lengthened compared to default.



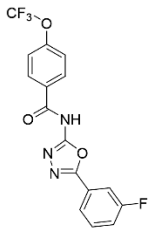
GN-237.1.fid
H1 standard parameters, cryoprobe prodigy.



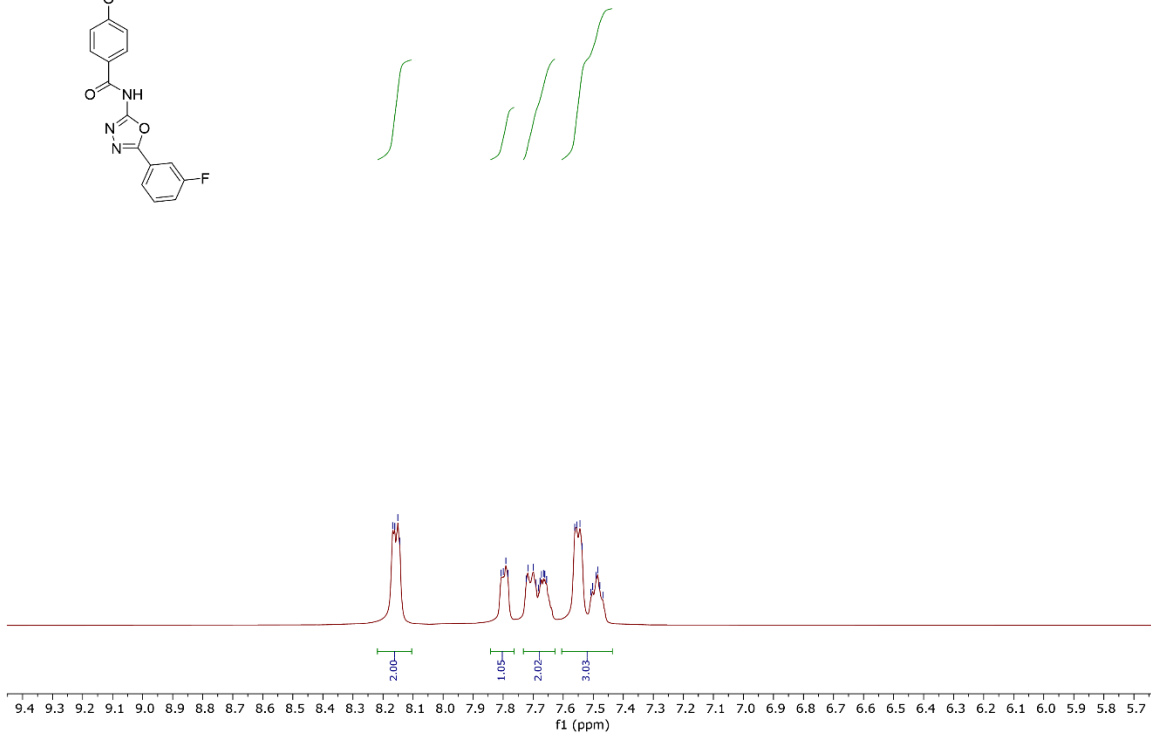
8.17
8.16
8.15
8.14
7.81
7.80
7.79
7.78
7.77
7.72
7.70
7.69
7.68
7.67
7.66
7.65
7.55
7.54
7.51
7.50
7.48
7.47



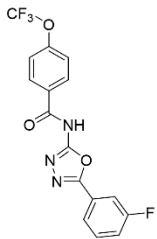
GN-237.1.fid
H1 standard parameters, cryoprobe prodigy.



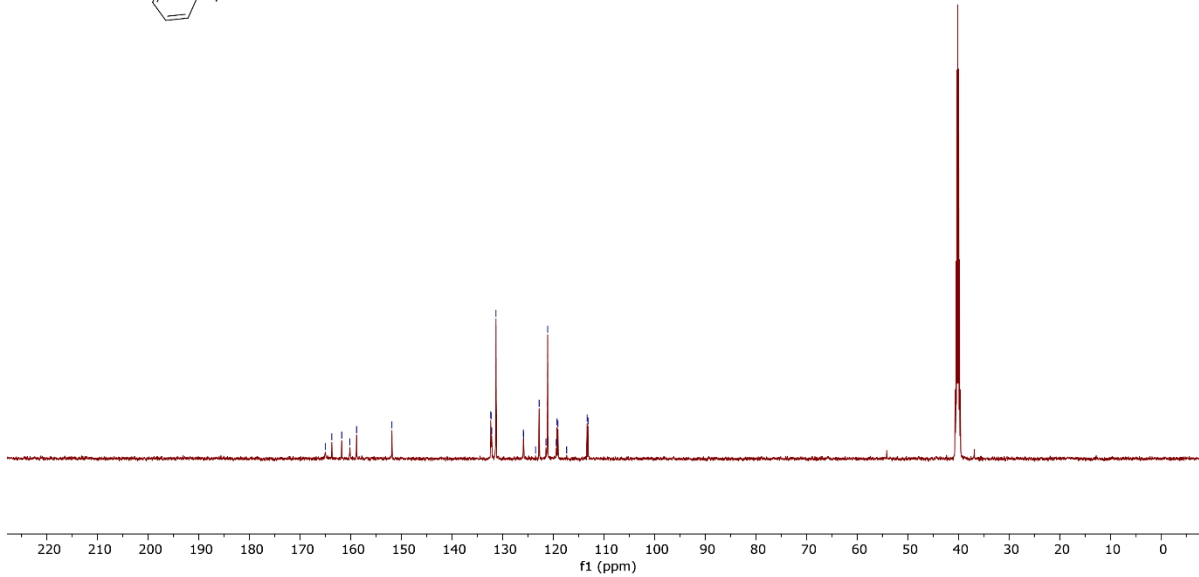
8.17
8.16
8.15
8.14
7.81
7.80
7.79
7.78
7.77
7.72
7.70
7.69
7.68
7.67
7.66
7.65
7.55
7.54
7.51
7.50
7.48
7.47



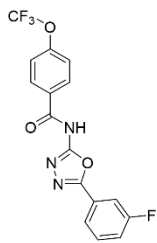
GN-237.2.fid
C13 standard parameters, cryoprobe prodigy.



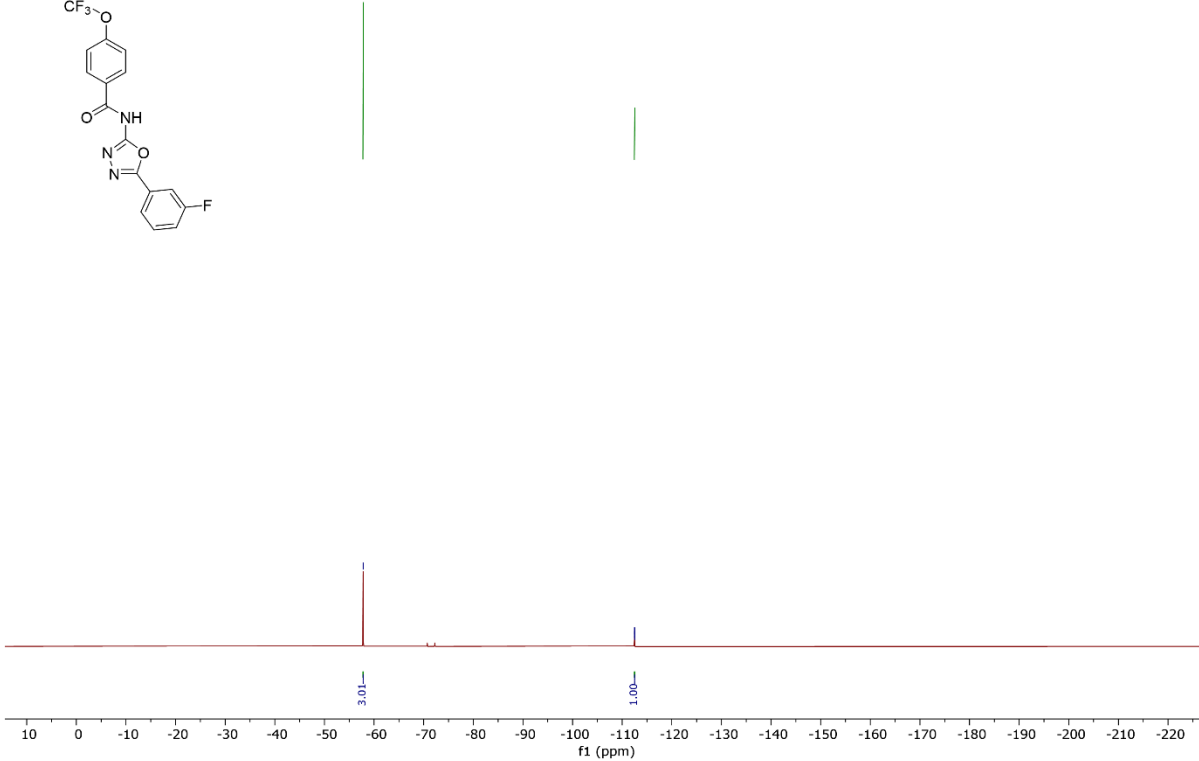
157.03
157.73
157.78
158.16
158.85
158.86
133.36
133.29
132.17
132.11
125.82
125.85
123.50
122.81
121.46
121.11
119.74
119.76
119.09
117.35
113.34
113.15



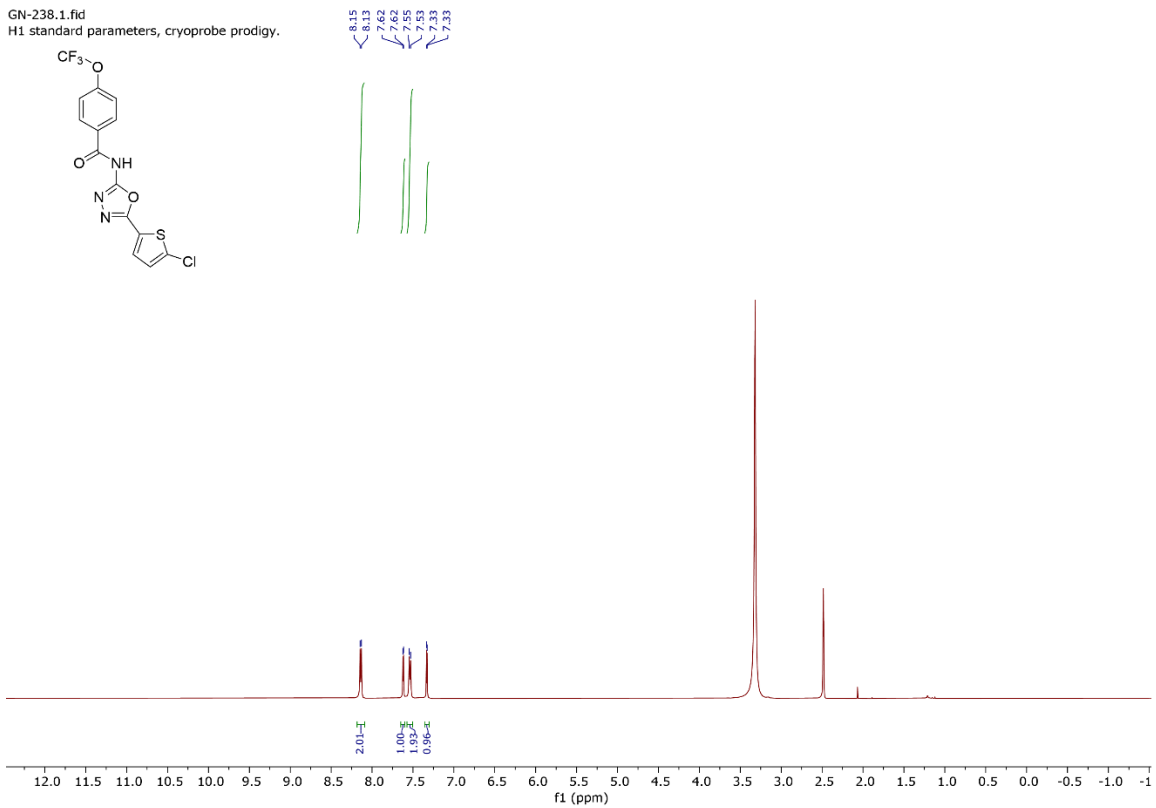
GN-237.3.fid
F19 standard parameters, cryoprobe prodigy.
DE is lengthened compared to default.



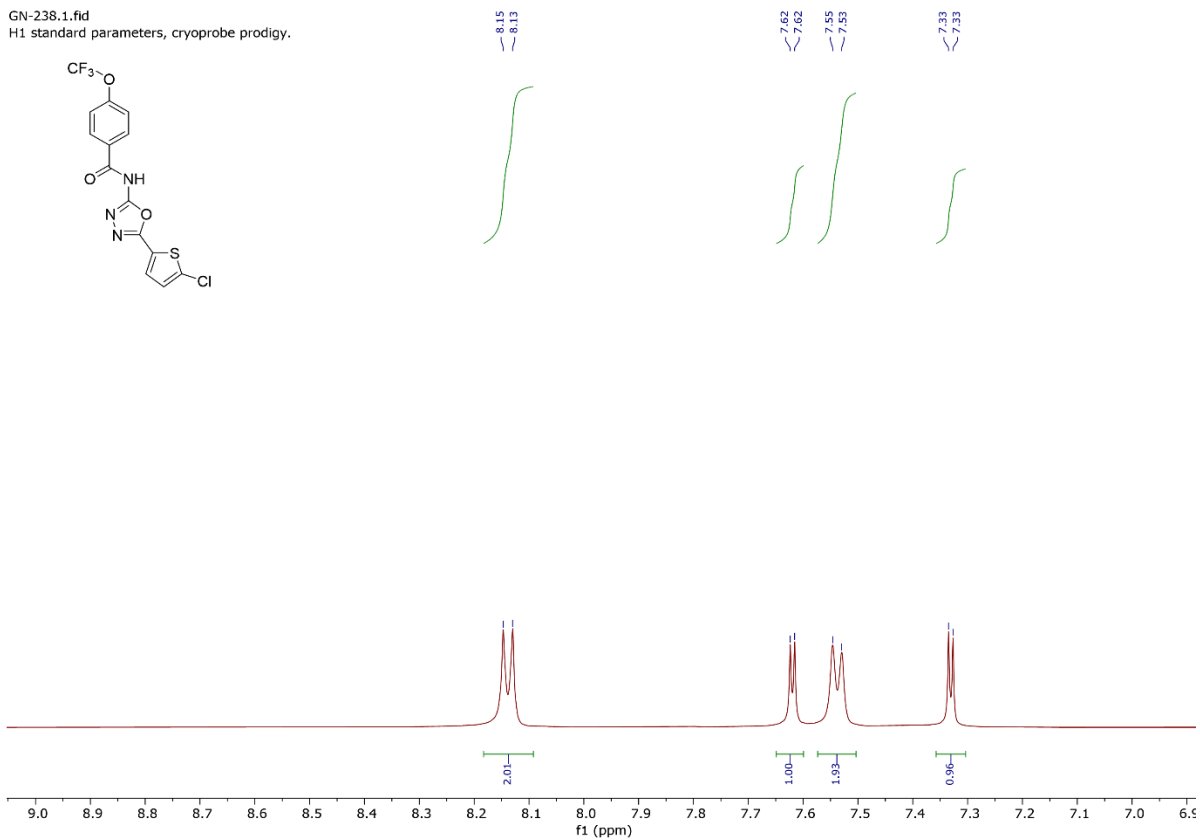
57.79
112.48
112.49
112.51
112.53



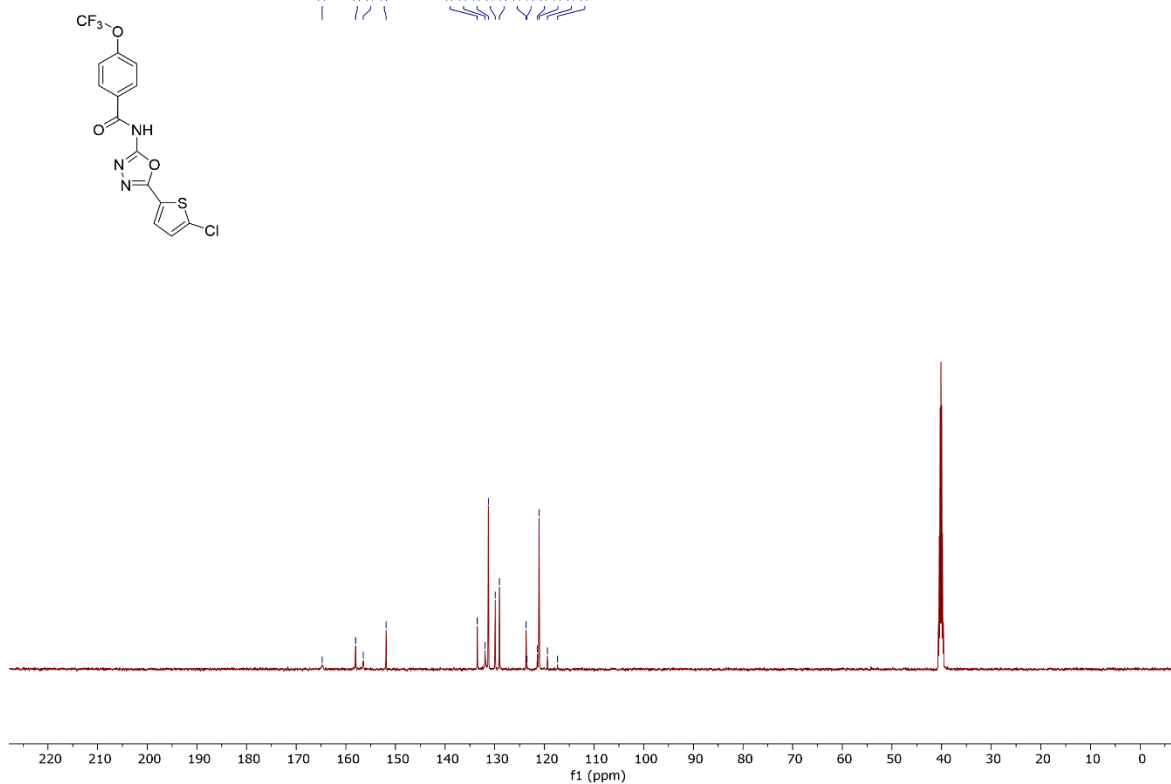
GN-238.1.fid
H1 standard parameters, cryoprobe prodigy.



GN-238.1.fid
H1 standard parameters, cryoprobe prodigy.



GN-238.2.fid
C13 standard parameters, cryoprobe prodigy. P:\prodigy30zr.jsh



GN-238.3.fid
F19 standard parameters, cryoprobe prodigy.
DE is lengthened compared to default.

