

Table A1: averaged subject-independent emotion classification accuracies across subjects

Classification	Method	Window size (s)								
		2	3	4	5	6	7	8	9	10
Arousal	SVM-Linear	47.04	46.80	46.73	46.90	46.14	46.93	46.96	47.40	48.25
	SVM-Polynomial	48.23	49.02	48.79	48.35	49.50	48.91	48.39	49.37	49.88
	SVM-RBF*	44.09	44.05	43.70	43.96	45.17	44.68	44.64	44.72	44.88
	This study	53.15	54.86	56.30	55.80	56.41	56.55	56.19	56.64	56.85
Valence	SVM-Linear	51.69	50.53	51.52	50.23	50.12	50.80	50.06	50.24	49.20
	SVM-Polynomial	51.18	50.73	51.33	51.23	49.62	50.72	50.39	49.75	49.24
	SVM-RBF*	52.95	53.89	54.87	54.84	53.66	54.90	55.47	54.88	54.46
	This study	69.82	71.43	72.29	73.04	73.04	72.37	73.34	72.73	72.88

* The results of SVM with RBF kernel are also presented in <https://arxiv.org/abs/1611.10120>

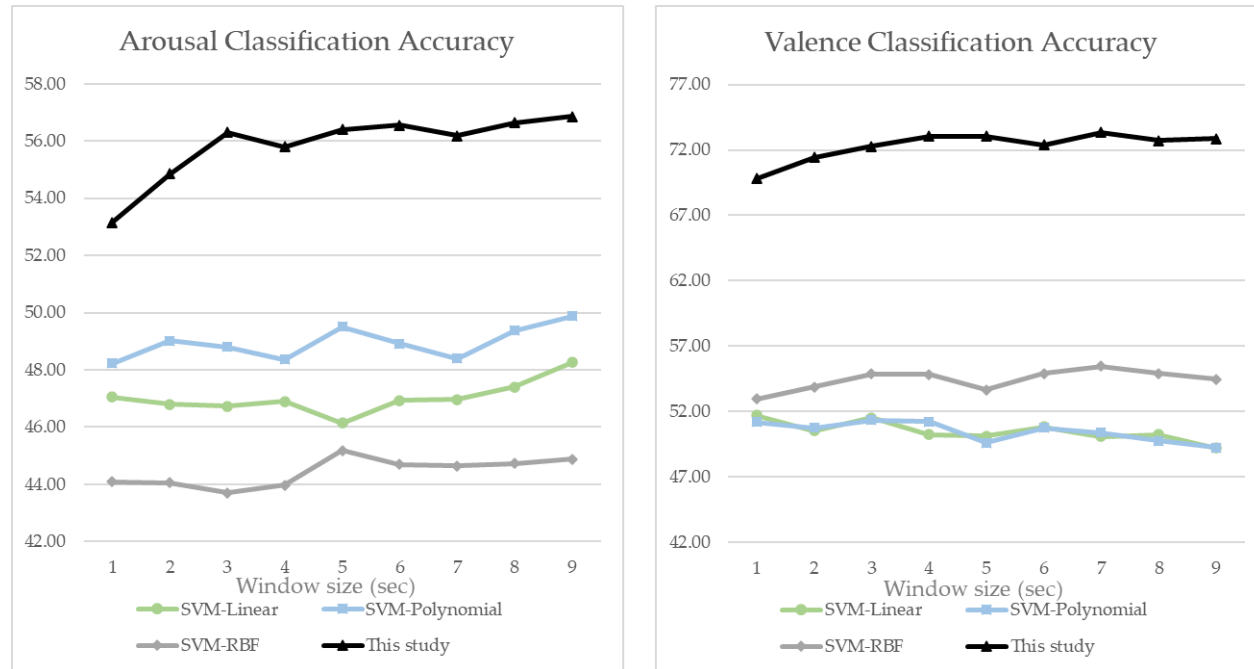


Figure A1: averaged subject-independent emotion classification accuracies across subjects