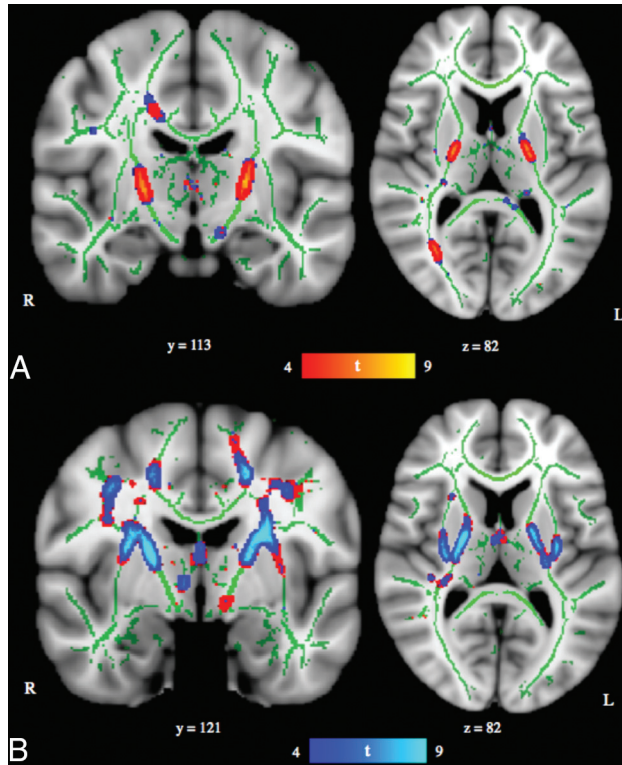


On-line Table: Motor-system assessment^a

	Score	Control (n = 8)	ABI (n = 5)
1	No self-mobility; wheelchair transported	0	3
2	Self-mobility in managed situation; wheelchair transported	0	1
3	Effective self-mobility otherwise, not walking (wheelchair, rolling, scooting, and so forth)	0	1
4	Walks with limitations, including hand-held mobility devices (cane or walker)	0	0
5	Walks without limitations	8	0

^a Motor function assessment scoring scale, criteria, and individual subject results are shown.



ON-LINE FIGURE. TBSS results at a lower threshold. *A*, TBSS-derived *t*-map of decreased fractional anisotropy in the anoxic brain injury group relative to the neurotypical control group ($P < .001$) is shown in red-yellow, overlaid onto TBSS output at the lower threshold of $P < .01$ in blue. *B*, TBSS-derived *t*-map of increased mean diffusivity in the ABI group relative to the neurotypical control group is shown in blue-light blue ($P < .001$), overlaid onto TBSS output at the lower threshold of $P < .01$ in red. Even at the less conservative threshold, FA and MD differences between the 2 groups remain relatively focal. All statistical maps were corrected for multiple comparisons. Results were thickened with *tbss_fill* and are overlaid onto the study-specific white matter skeleton (green) and the Montreal Neurological Institute–152 template. Section position (given by *y* or *z* location) corresponds to MNI–152 template space.