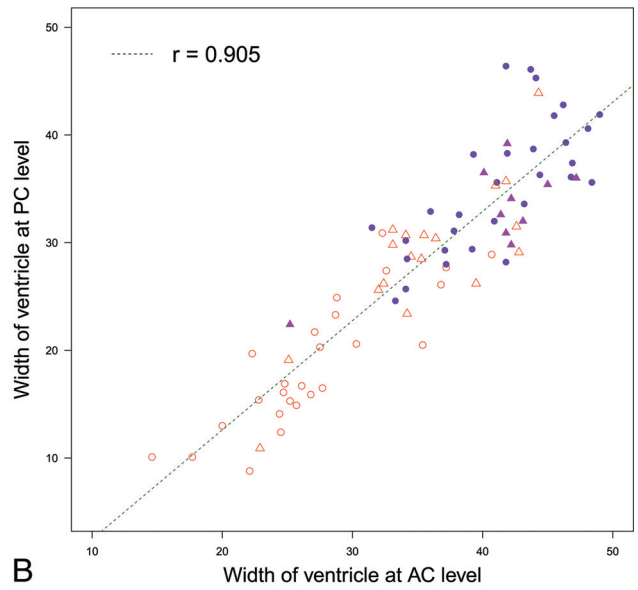
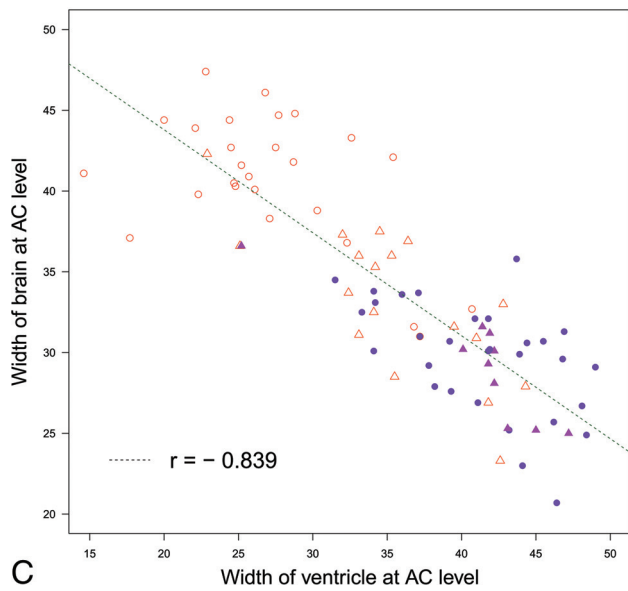


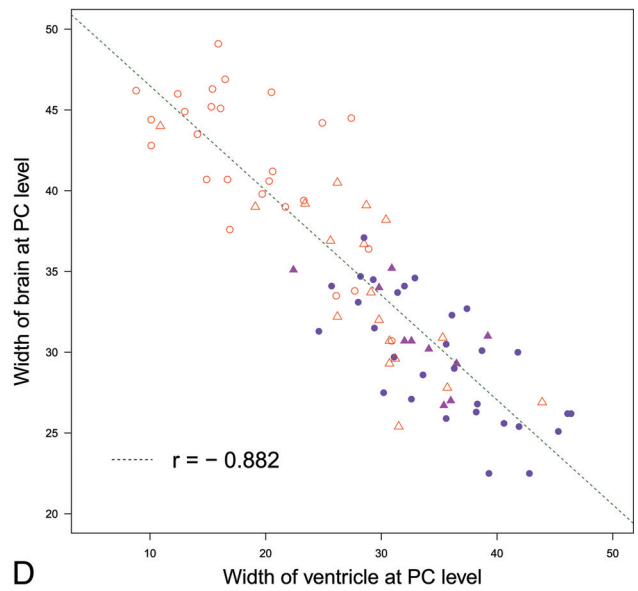
A



B



C



D

**ON-LINE FIGURE.** Scatterplots and receiver operating characteristic curves for the differential diagnosis of idiopathic normal pressure hydrocephalus and Alzheimer disease. These 4 diagrams show the scatterplots and linear regressions for the correlation between the widths of the brain and ventricle at the anterior and posterior commissure levels. The *purple circle* indicates iNPH, the *purple triangle* indicates iNPH concurrent with Alzheimer disease, the *open red triangle* indicates AD, and the *open red circle* indicates controls.