

OMTN, Volume 24

## Supplemental information

### **Exosome-transmitted miRNA-335-5p promotes colorectal cancer invasion and metastasis by facilitating EMT via targeting RASA1**

**Xuecheng Sun, Feiyan Lin, Wenjing Sun, Weijian Zhu, Daoquan Fang, Lifang Luo, Shuhan Li, Wenqi Zhang, and Lei Jiang**

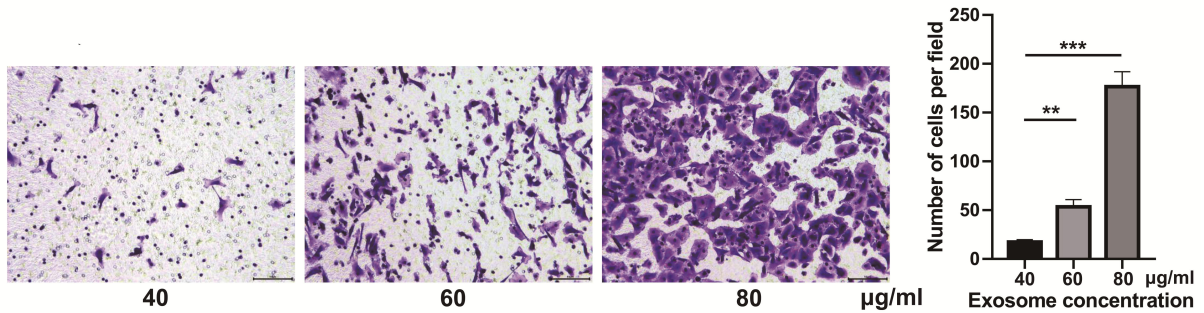
OMTN, Volume ■ ■ ■

## **Supplemental information**

### **Exosome-transmitted miRNA-335-5p promotes colorectal cancer invasion and metastasis by facilitating EMT via targeting RASA1**

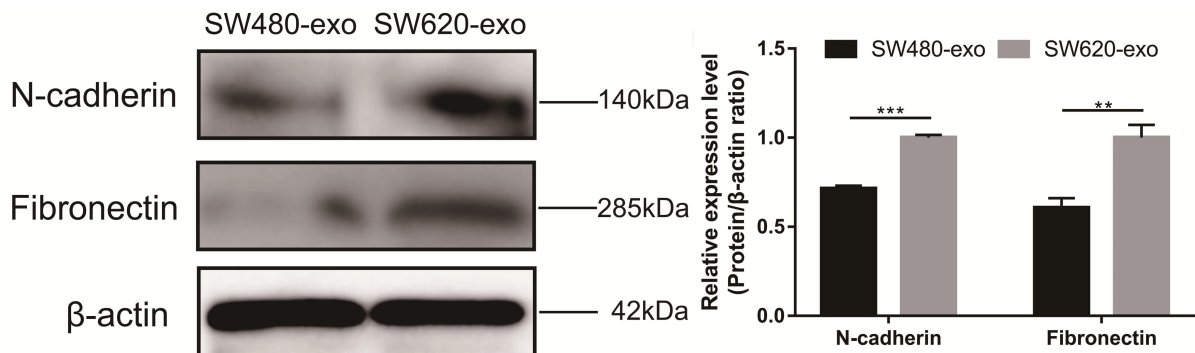
**Xuecheng Sun, Feiyan Lin, Wenjing Sun, Weijian Zhu, Daoquan Fang, Lifang Luo, Shuhan Li, Wenqi Zhang, and Lei Jiang**

**Figure S1**



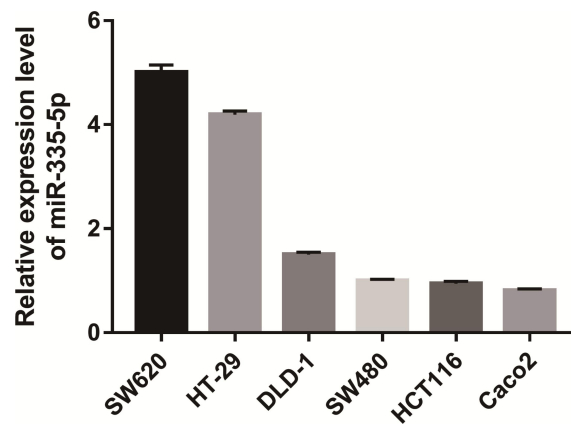
**Figure S1.** Transwell migration assay of SW480 cells treated with indicated concentrations of exosomes (40, 60 and 80 µg/ml) derived from metastatic SW620 cells. Representative images from triplicate experiments are shown. Scale bar, 100 µm. Data are presented as mean ± SD (n = 3). \*\* $P < 0.01$ , \*\*\* $P < 0.001$ .

**Figure S2**



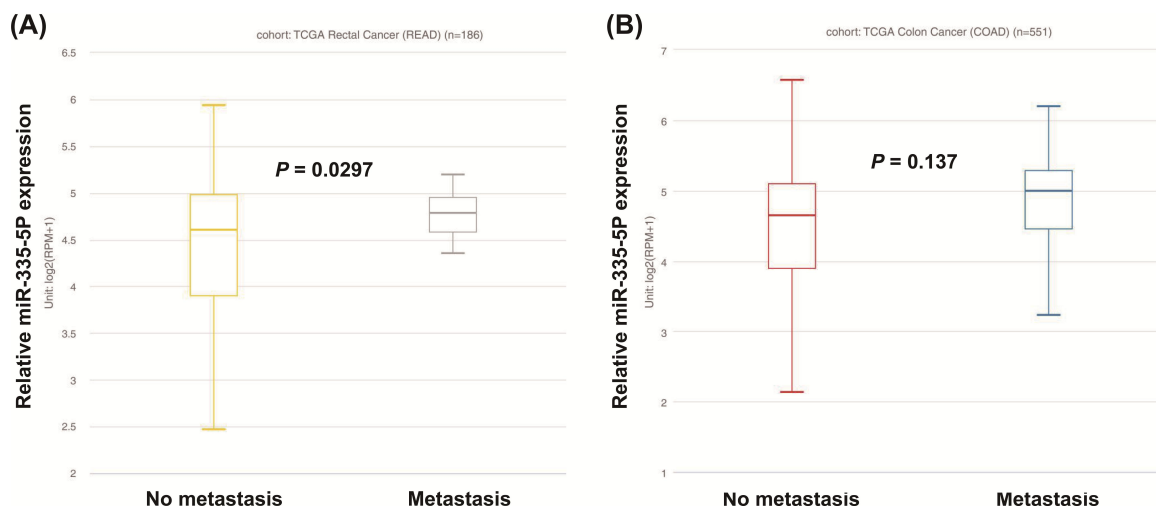
**Figure S2.** The protein expression levels of Fibronectin and N-cadherin in SW480 cells treated with SW480-exo or SW620-exo were determined by western blotting. β-actin as a loading control. Data are presented as mean ± SD (n = 3). \*\* $P < 0.01$ , \*\*\* $P < 0.001$ .

**Figure S3**



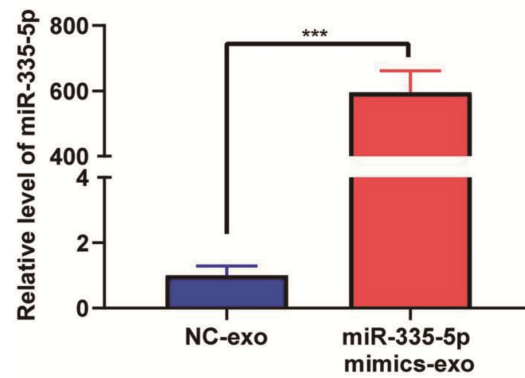
**Figure S3.** The expression levels of miR-335-5p derived from 6 CRC cell lines (SW620, DLD1, SW480, HCT116, HT29, and Caco-2) were determined by quantitative RT-PCR. Data are presented as mean  $\pm$  SD ( $n = 3$ ).

**Figure S4**



**Figure S4.** (A) Expression of miR-335-5p in metastatic and non-metastatic rectal cancer samples based on TCGA data ( $P = 0.0297$ ). Data are presented as mean  $\pm$  SD ( $n = 186$ ). (B) Expression of miR-335-5p in metastatic and non-metastatic colon cancer samples based on TCGA data ( $P = 0.137$ ). Data are presented as mean  $\pm$  SD ( $n = 551$ ).

**Figure S5**



**Figure S5.** The expression level of miR-335-5p in exosomes derived from SW480 cells transfected with miR-335-5p mimics was determined by quantitative RT-PCR. Data are presented as mean  $\pm$  SD (n = 3). \*\*\* $P < 0.001$ .