

Fig. S1: Relative mRNA expression of AURKB in different cell lines. Y79, WERI-RB1, LRB1 and LRB2 – RB cells; ARPE-19 - human retinal pigment epithelial cell line; MCF-7 – human breast cancer cell line; HCT-116 – human colon cancer cell line. The error bars represent standard error of mean.

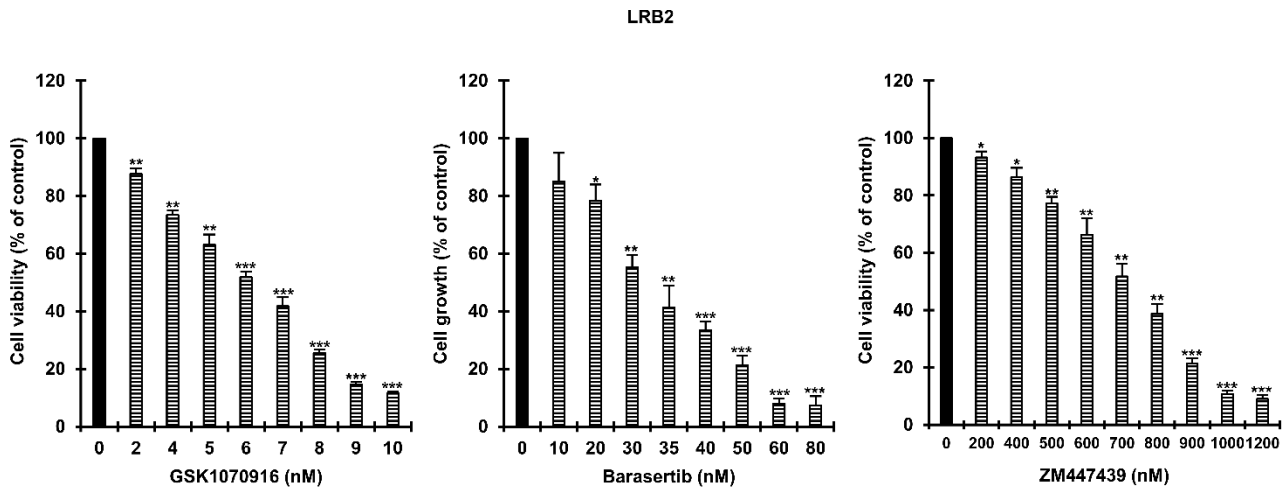


Fig. S2: Dose-dependent decrease in cell viability in LRB2 cells upon treatment with AURKB inhibitors. The error bars indicate standard deviation (* $p < 0.05$, ** $p < 0.01$, *** $p < 0.001$ determined by student's t-test).

Sl. No.	MYCN binding motif and position	Forward primer (5' to 3')	Reverse Primer (5' to 3')
1.	-1698 CATTG -1693	CCTTGCCCTATACATCTTTTCATC	GGGAATCAGTTTCTTGCTCAGA
2.	-1383 CACCTG -1378	CTCACGCCTGTAATCCAAG	AGAGACGGGGTTTCATCAC
3.	-1310 CACATG -1305	CGTGGTCACATGCACCTATAA	CCAGGGTGCAACTGATTCTC
4.	-1069 CAGGTG -1064	TTGGGGTTGTCAGCAACAGAA	TTAGGGGACCACCTGTCTCTC
5.	-462 CACCTG -457	GGATCACCTGAGGACAGGAGT	TAGAGACGGGTTTTCGCTGT
6.	Negative control	CTCTGCCTCCCAGGATTACA	AATGAGGAAACCCCTGTCTGT

Table S1: List of primers used for ChIP-PCR analysis

Cells	Inhibitor	IC50 (nM)
Y79	GSK1070916	17.89
	Barasertib	39.38
	ZM447439	845.27
LRB1	GSK1070916	5.97
	Barasertib	38.41
	ZM447439	641.47
LRB2	GSK1070916	5.88
	Barasertib	32.39
	ZM447439	680.27

Table S2: IC50 concentrations of different AURKB inhibitors

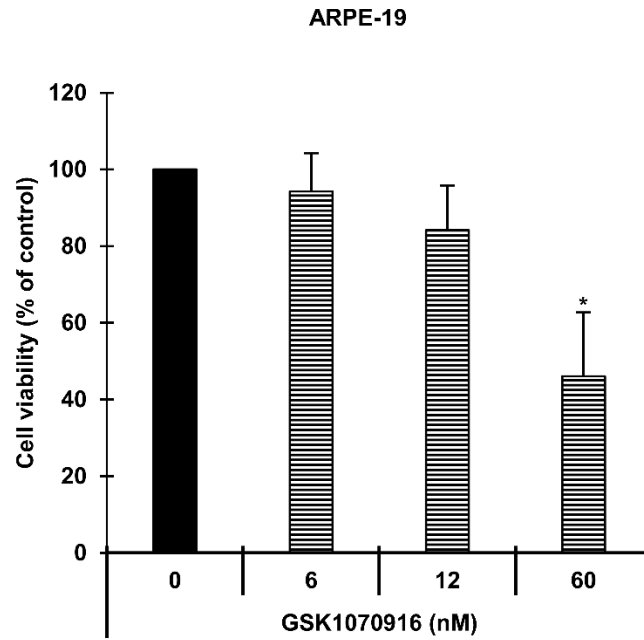


Fig. S3: Cell viability of ARPE 19 cells in response to AURKB inhibitor, GSK1070916. The error bars indicate standard deviation (* $p < 0.05$ determined by student's t-test).

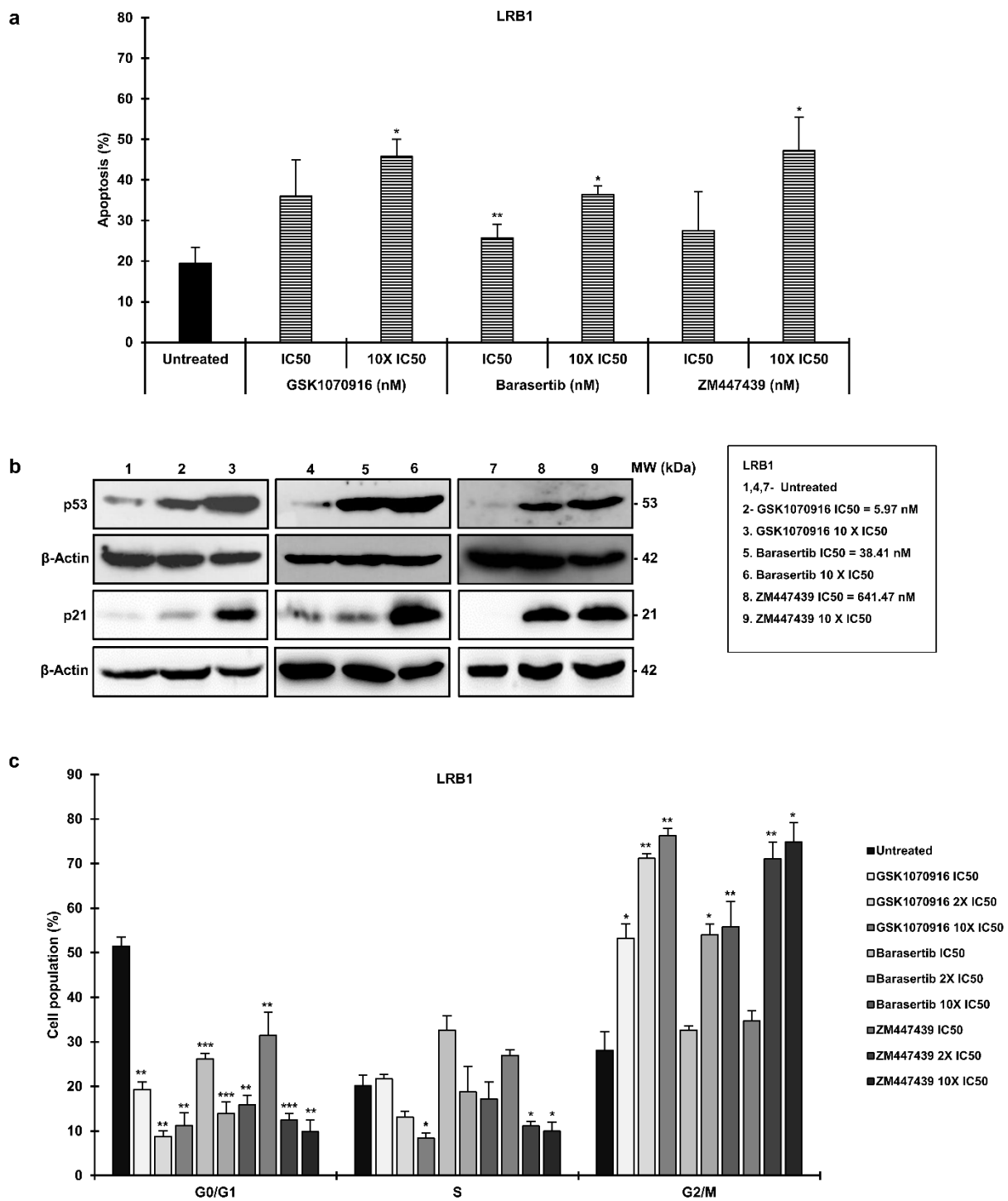


Fig. S4: Changes in **a.** apoptosis, **b.** p53 and p21 protein levels and **c.** cell cycle distribution in LRB1 cells upon AURKB inhibition. The error bars represent standard error of mean (* $p < 0.05$, ** $p < 0.01$, *** $p < 0.001$ determined by student's t-test)