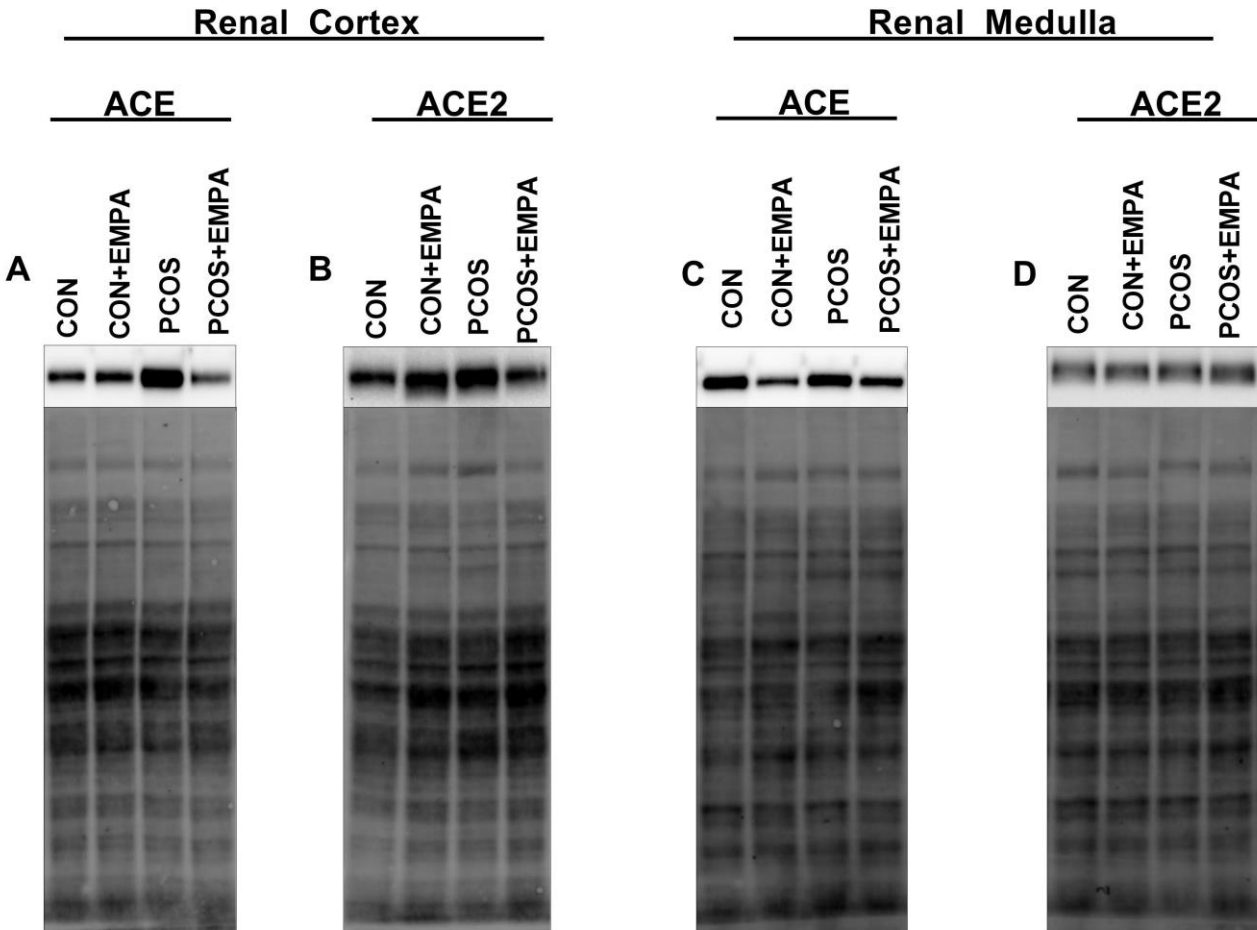


## Supplementary Figure S1



### Supplementary Figure S1: Effect of EMPA on renal ACE and ACE2 protein expression in PCOS.

Effect of EMPA on renal (A) cortical Angiotensin-Converting Enzyme (ACE), (B) cortical Angiotensin-Converting Enzyme 2 (ACE2), (C) medullar ACE, and (D) medullar ACE2 protein expression after 3 weeks of EMPA treatment. Top panel: ACE or ACE2. Bottom panel: Stain-Free blots used for total protein content (TPC) quantification and ACE/ACE2 expression normalization. CON: Control, CON+EMPA: Control+Empagliflozin, PCOS: Polycystic Ovary Syndrome, PCOS+EMPA: Polycystic Ovary Syndrome+Empagliflozin.