

Supplementary Materials
for
One-pot Synthesis of Novel Multisubstituted 1-
Alkoxyindoles

Ye Eun Kim, Hyunsung Cho, Yoo Jin Lim, Chorong Kim, and Sang Hyup Lee*

College of Pharmacy and Innovative Drug Center, Duksung Women's University,

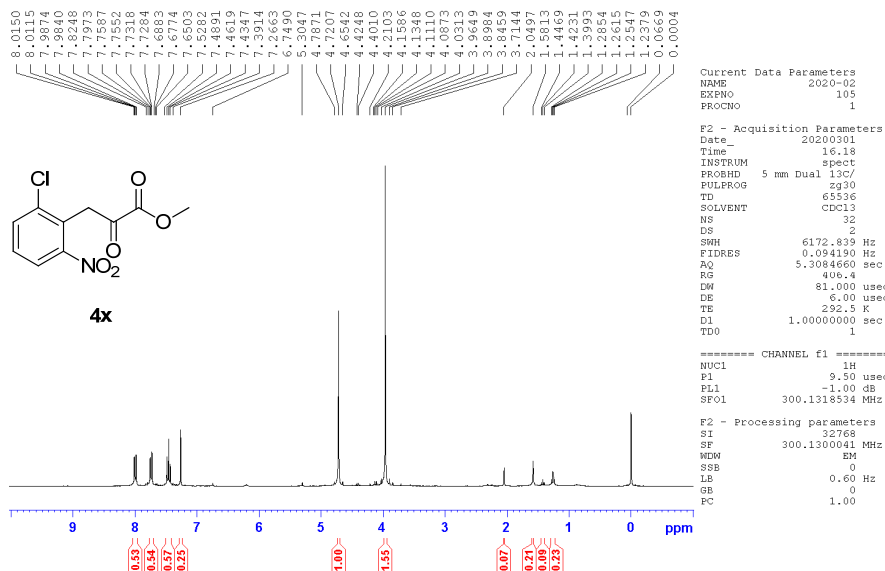
Seoul 01369, Republic of Korea,

*sanghyup@duksung.ac.kr

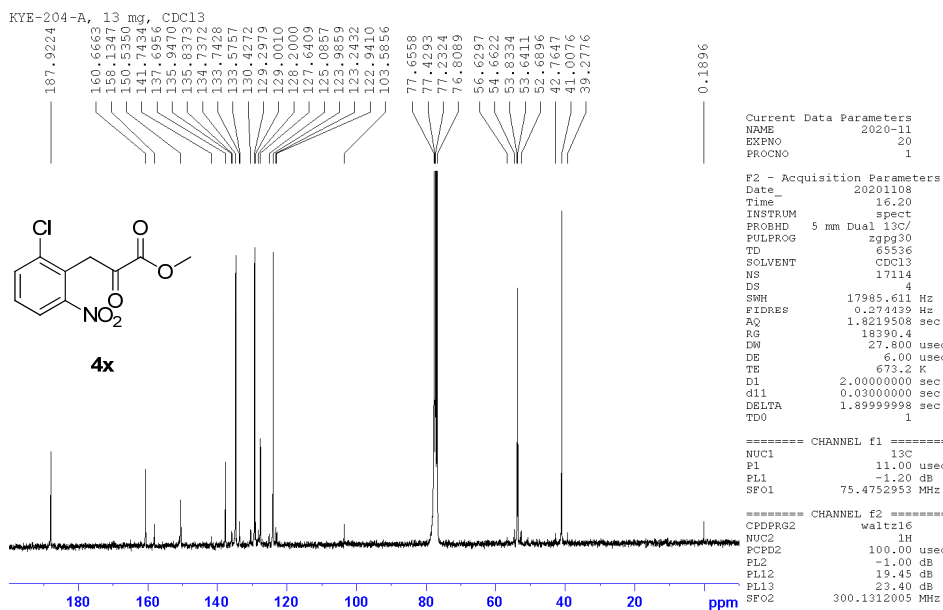
¹ H and ¹³ C NMR spectrum of compound 4x -----	S3
¹ H and ¹³ C NMR spectrum of compound 4y -----	S4
¹ H and ¹³ C NMR spectrum of compound 2x -----	S5
¹ H and ¹³ C NMR spectrum of compound 2y -----	S6
¹ H and ¹³ C NMR spectrum of compound 1xa -----	S7
¹ H and ¹³ C NMR spectrum of compound 1xb -----	S8
¹ H and ¹³ C NMR spectrum of compound 1xc -----	S9
¹ H and ¹³ C NMR spectrum of compound 1xd -----	S10
¹ H and ¹³ C NMR spectrum of compound 1xe -----	S11
¹ H and ¹³ C NMR spectrum of compound 1xf -----	S12
¹ H and ¹³ C NMR spectrum of compound 1xg -----	S13
¹ H and ¹³ C NMR spectrum of compound 1xh -----	S14
¹ H and ¹³ C NMR spectrum of compound 1xi -----	S15
¹ H and ¹³ C NMR spectrum of compound 1xj -----	S16

^1H and ^{13}C NMR spectrum of compound 1xk -----	S17
^1H and ^{13}C NMR spectrum of compound 1xl -----	S18
^1H and ^{13}C NMR spectrum of compound 1xm -----	S19
^1H and ^{13}C NMR spectrum of compound 1xn -----	S20
^1H and ^{13}C NMR spectrum of compound 1ya -----	S21
^1H and ^{13}C NMR spectrum of compound 1yb -----	S22
^1H and ^{13}C NMR spectrum of compound 1yc -----	S23
^1H and ^{13}C NMR spectrum of compound 1yg -----	S24
^1H and ^{13}C NMR spectrum of compound 1yh -----	S25
^1H and ^{13}C NMR spectrum of compound 1yj -----	S26
^1H and ^{13}C NMR spectrum of compound 1yl -----	S27
^1H and ^{13}C NMR spectrum of compound 1ym -----	S28
^1H and ^{13}C NMR spectrum of compound 11xl -----	S29
^1H and ^{13}C NMR spectrum of compound 11xm -----	S30

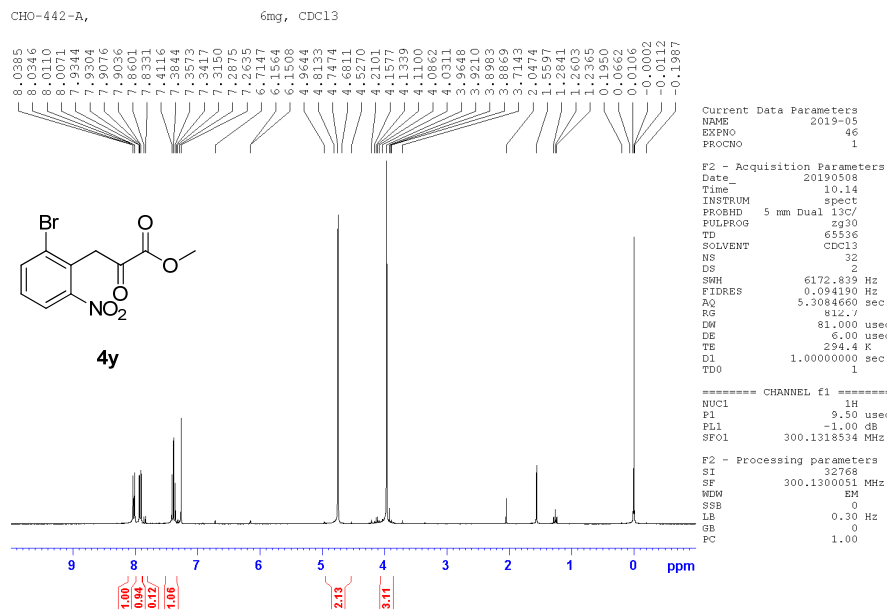
KYE-131-A, 5.9 mg, CDCl₃



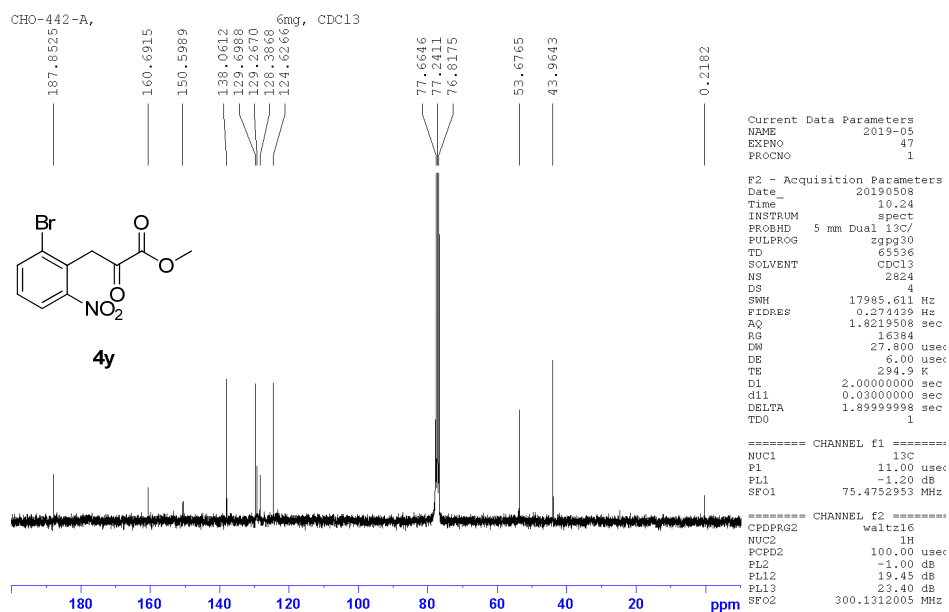
¹H NMR spectrum (300 MHz, CDCl₃) of compound 4x



¹³C NMR spectrum (75 MHz, CDCl₃) of compound 4x

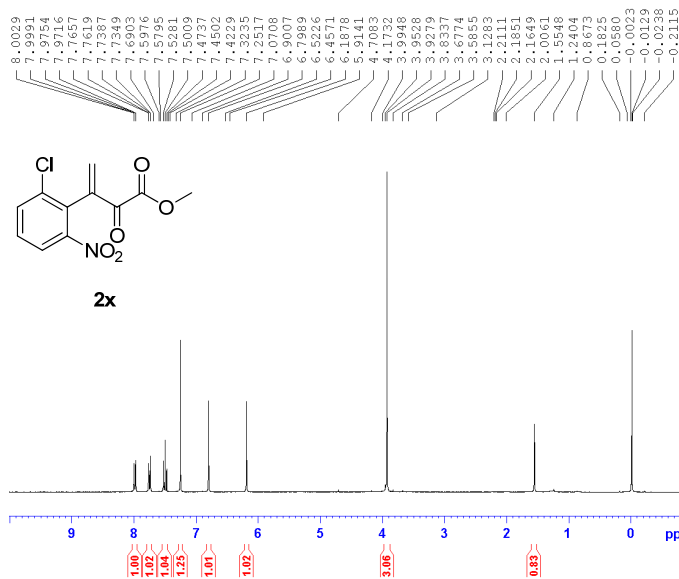


¹H NMR spectrum (300 MHz, CDCl₃) of compound 4y



¹³C NMR spectrum (75 MHz, CDCl₃) of compound 4y

KYE-210-A, 2.7 mg, CDCl₃



```
Current Data Parameters
NAME      2020-12
EXPNO    98
PROCNO    1

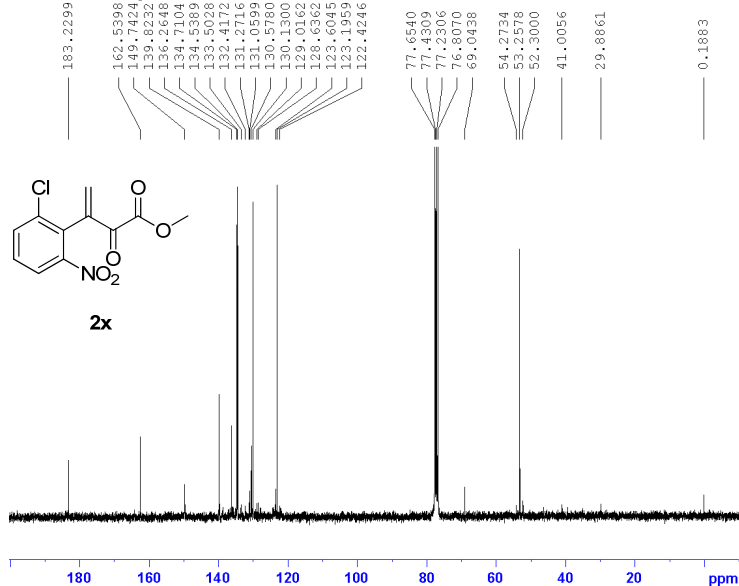
F2 - Acquisition Parameters
Date_     20201224
Time      18.38
INSTRUM   spect
PROBHD    5 mm Dual 13C/
PULPROG   zg30
TD         65536
SOLVENT   cdcl3
NS         32
DS         2
SWH        6172.839 Hz
FIDRES    0.094190 Hz
AQ         5.3084660 sec
RG         312
DM         81.000 usec
DE         6.00 usec
TE         673.2 K
D1         1.00000000 sec
TD0        1

===== CHANNEL f1 =====
NUC1      1H
P1        9.50 usec
PL1       -1.00 dB
SFO1      300.1318534 MHz

F2 - Processing parameters
SI         32768
SF         300.1300085 MHz
WDW        EM
SSB        0
LB         0.60 Hz
GB         0
PC         1.00
```

¹H NMR spectrum (300 MHz, CDCl₃) of compound 2x

KYE-154-A, 15 mg, CDCl₃



```
Current Data Parameters
NAME      2020-10
EXPNO    84
PROCNO    1

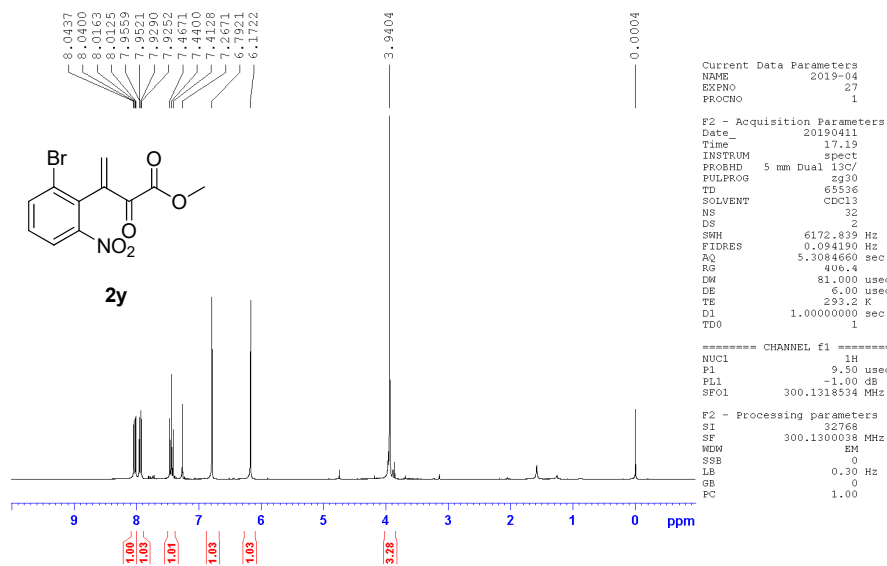
F2 - Acquisition Parameters
Date_     20201029
Time      13.38
INSTRUM   spect
PROBHD    5 mm Dual 13C/
PULPROG   zgpg30
TD         65536
SOLVENT   CDCl3
NS         3183
DS         4
SWH        17985.611 Hz
FIDRES    0.274439 Hz
AQ         1.8219508 sec
RG         14596.5
DM         27.800 usec
DE         6.00 usec
TE         673.2 K
D1         2.00000000 sec
d11       0.03000000 sec
DELTA     1.89999998 sec
TD0        1

===== CHANNEL f1 =====
NUC1      13C
P1        11.00 usec
PL1       -1.20 dB
SFO1      75.4752953 MHz

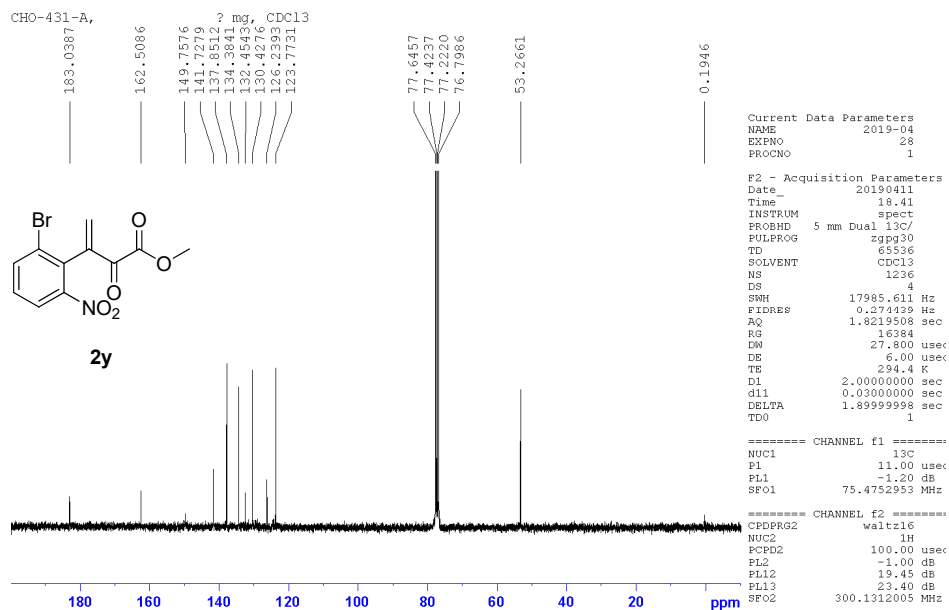
===== CHANNEL f2 =====
CPDPRG2   waltz16
NUC2      1H
PCPD2     100.00 usec
PL2       -1.00 dB
PL12      19.45 dB
PL13      23.40 dB
SFO2      300.1312005 MHz
```

¹³C NMR spectrum (75 MHz, CDCl₃) of compound 2x

CHO-431-A, ? mg, CDCl₃

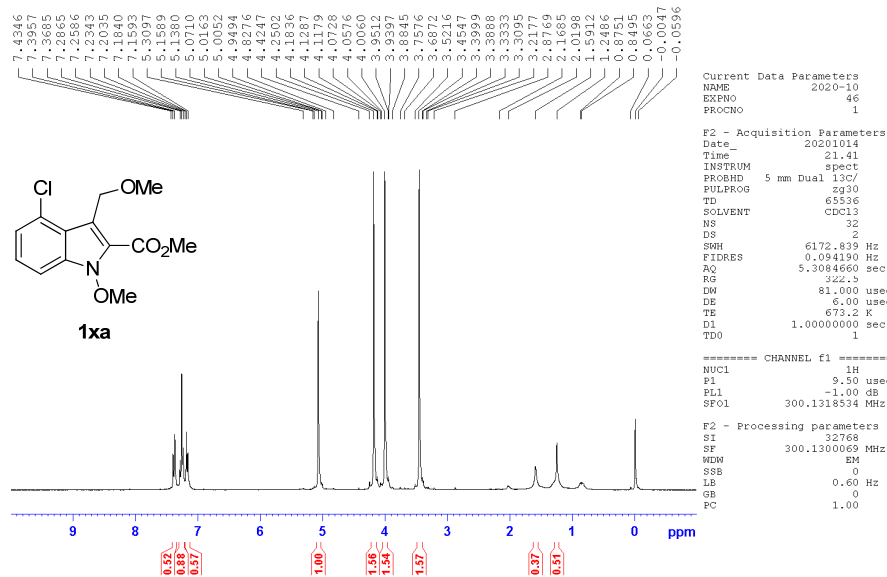


¹H NMR spectrum (300 MHz, CDCl₃) of compound 2y



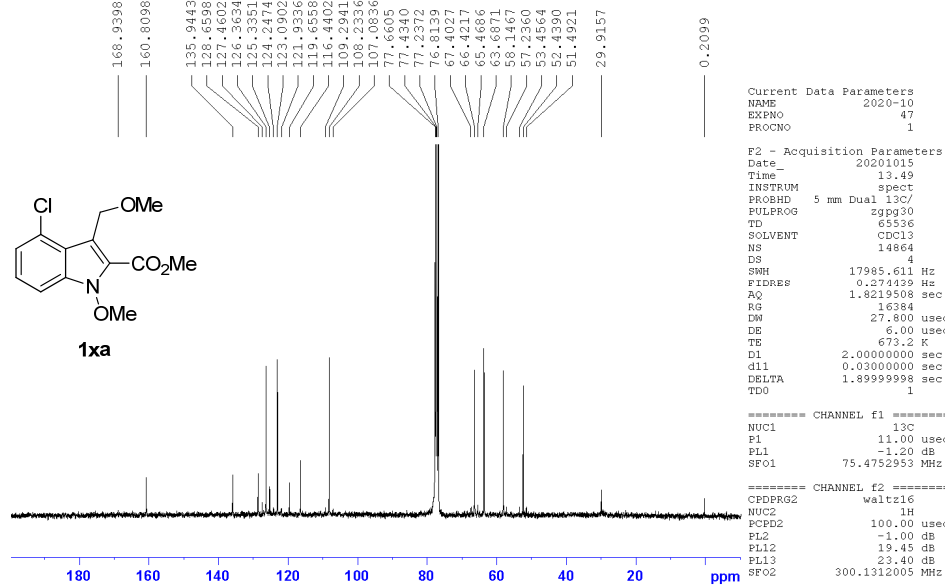
¹³C NMR spectrum (75 MHz, CDCl₃) of compound 2y

KYE-111-A, 11.2 mg, CDCl₃



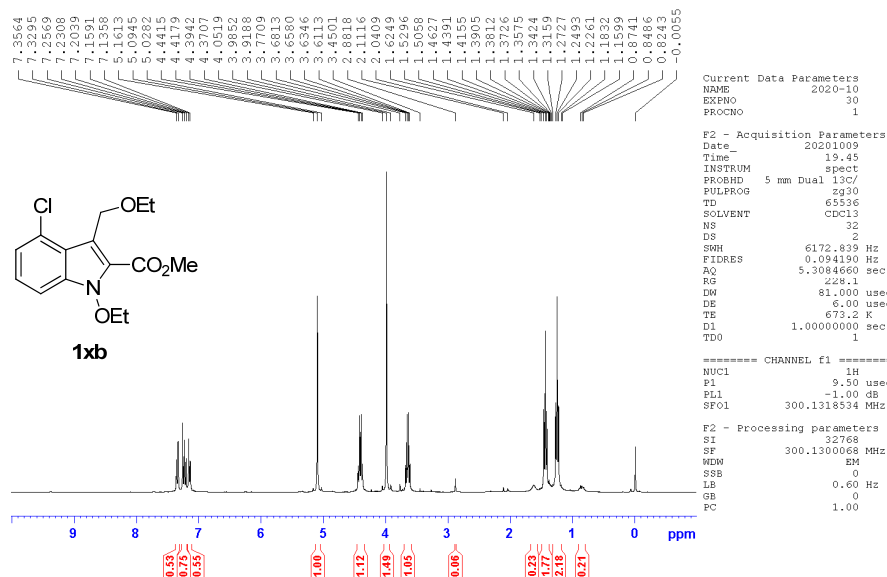
¹H NMR spectrum (300 MHz, CDCl₃) of compound 1xa

KYE-111-A, 11.2 mg, CDCl₃

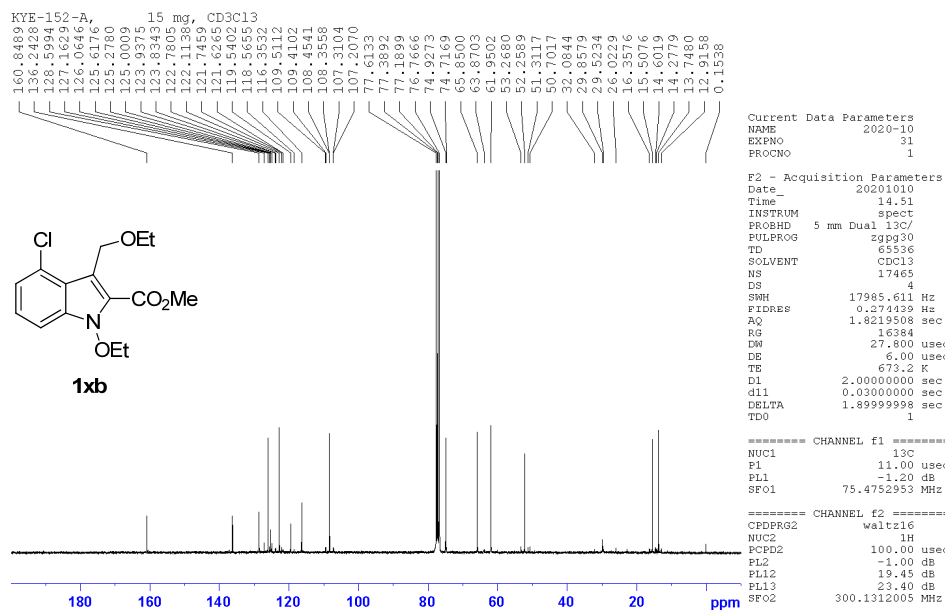


¹³C NMR spectrum (75 MHz, CDCl₃) of compound 1xa

KYE-152-A, 15 mg, CD3Cl3

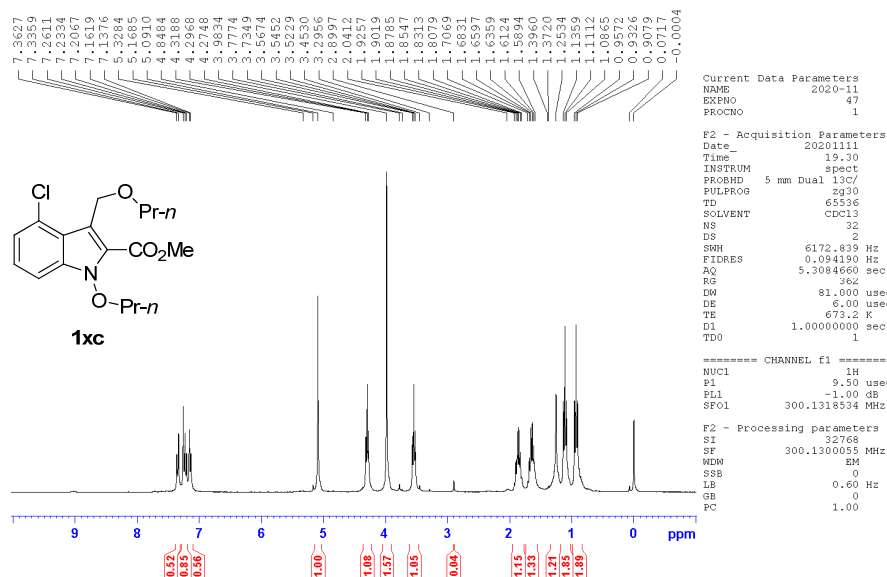


¹H NMR spectrum (300 MHz, CDCl₃) of compound 1xb



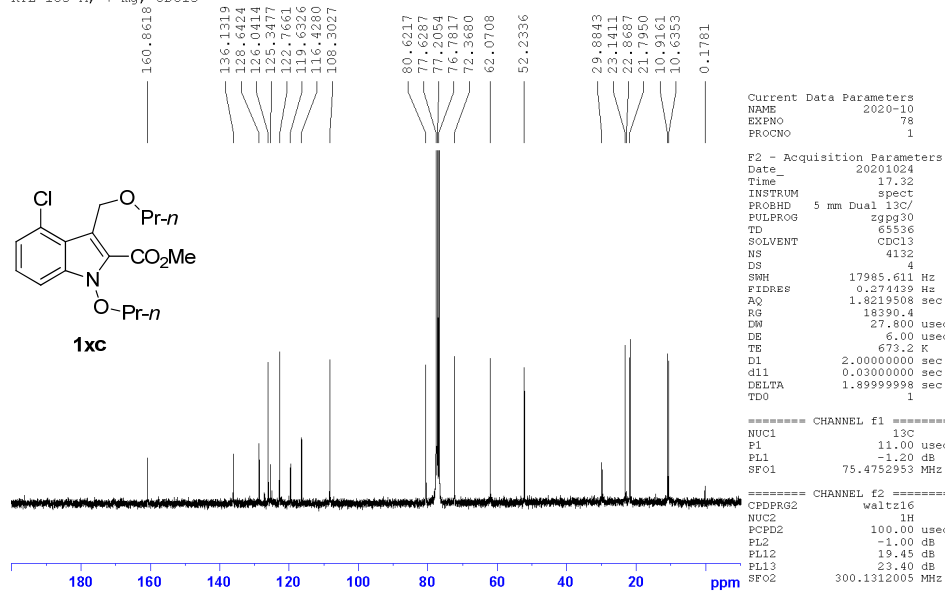
¹³C NMR spectrum (75 MHz, CDCl₃) of compound 1xb

KYE-153-A, 7.0 mg, CDCl₃



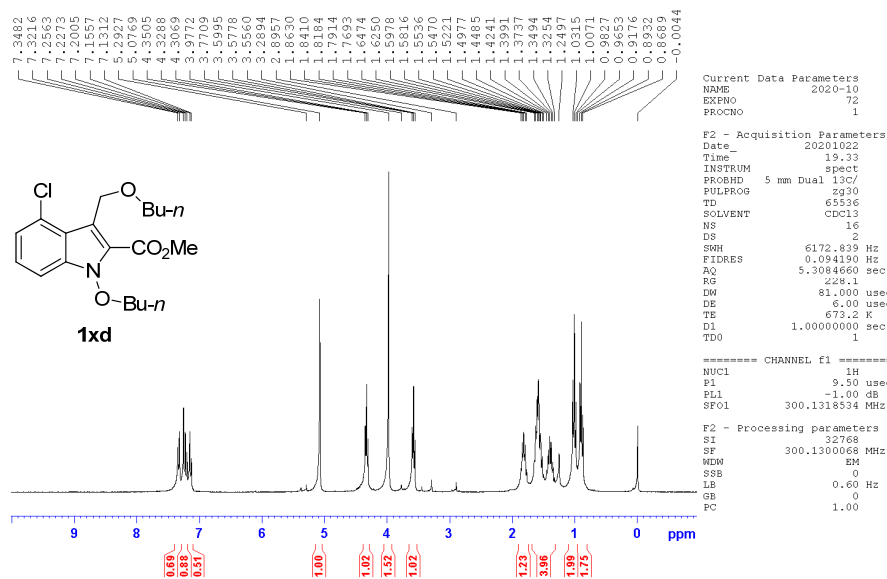
¹H NMR spectrum (300 MHz, CDCl₃) of compound 1xc

KYE-153-A, 7 mg, CDCl₃



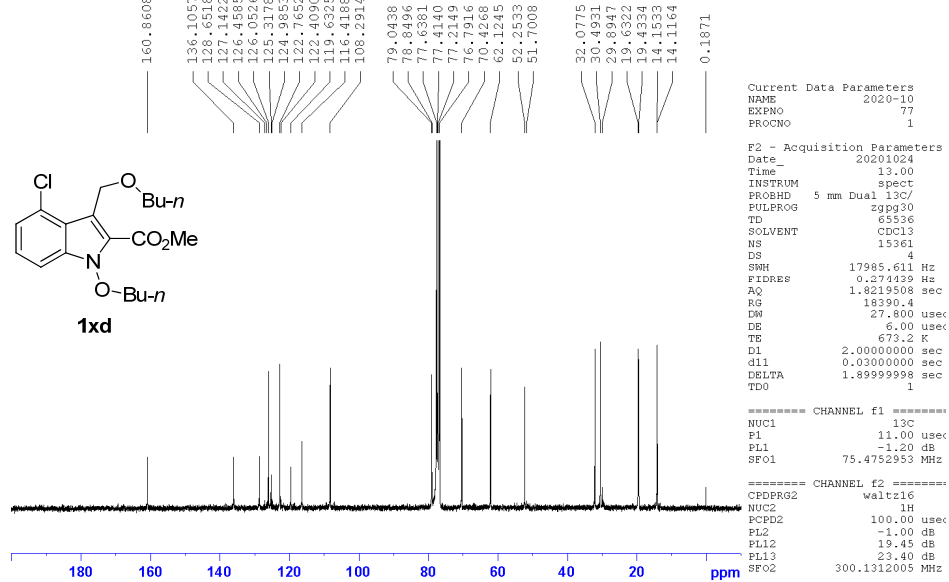
¹³C NMR spectrum (75 MHz, CDCl₃) of compound 1xc

KYE-198-A, 10 mg, CDCl₃



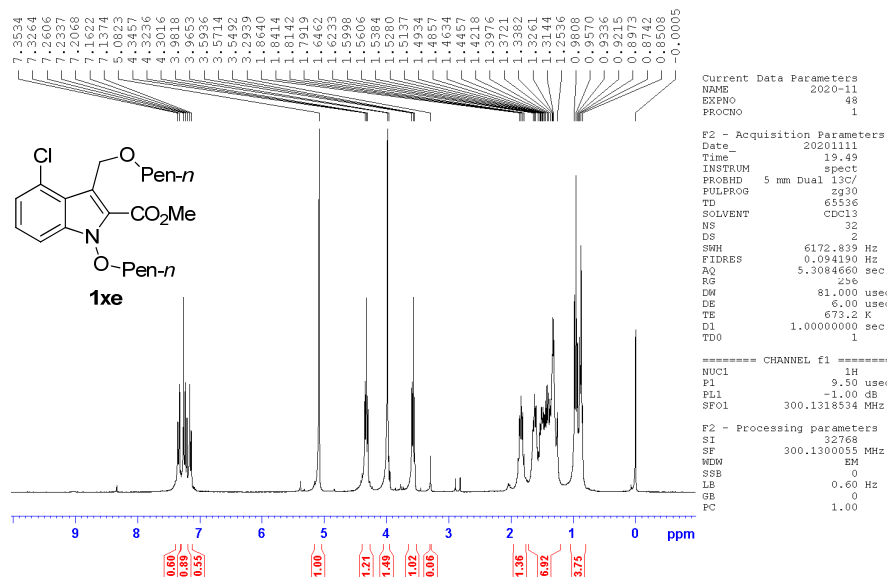
¹H NMR spectrum (300 MHz, CDCl₃) of compound 1xd

KYE-198-A, 10 mg, CDCl₃



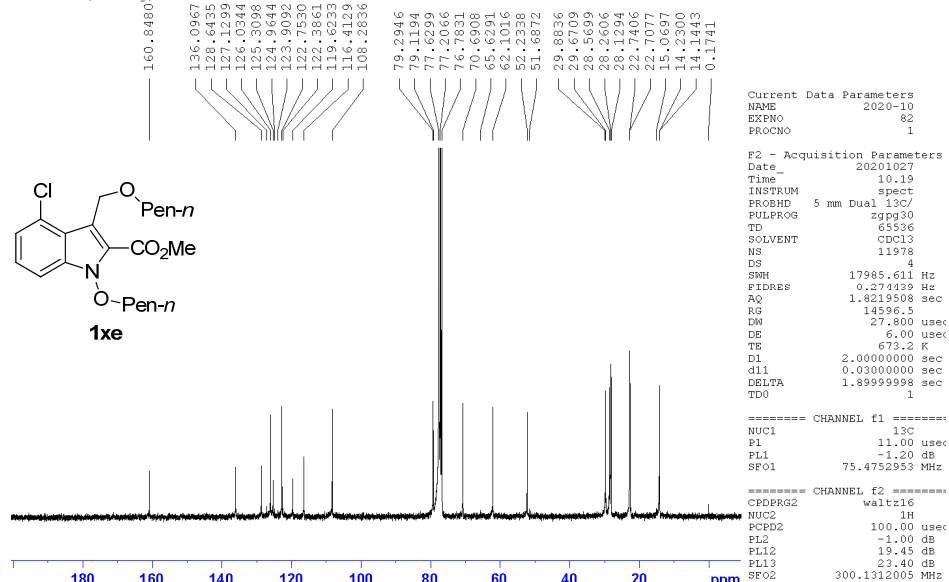
¹³C NMR spectrum (75 MHz, CDCl₃) of compound 1xd

KYE-194-A, 10.0 mg, CDCl₃



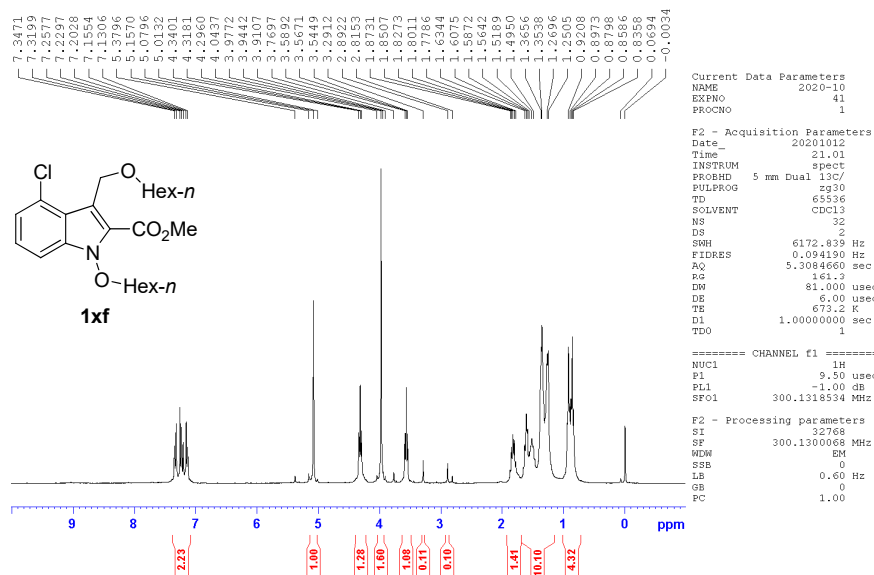
¹H NMR spectrum (300 MHz, CDCl₃) of compound 1xe

KYE-194-A, 10 mg, CDCl₃

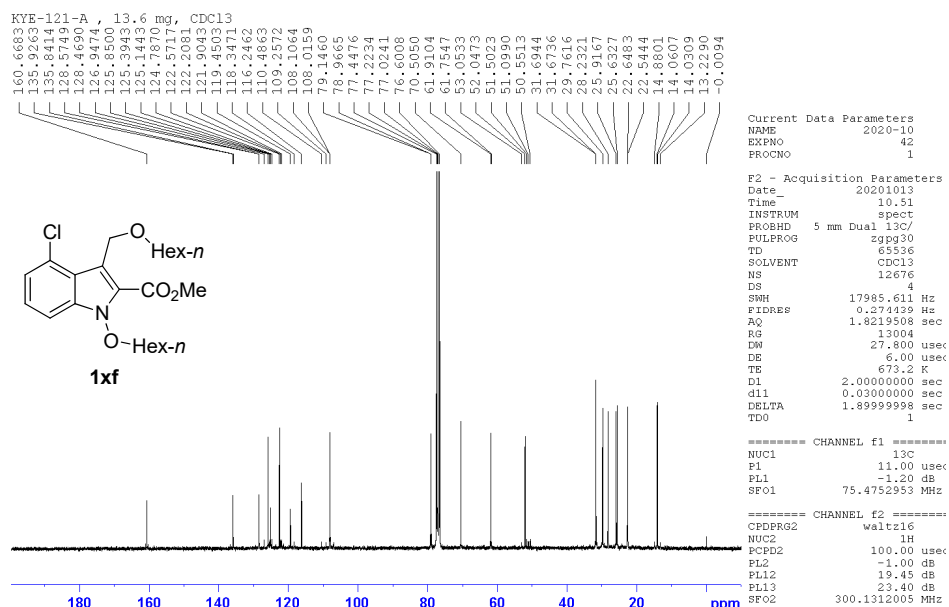


¹³C NMR spectrum (75 MHz, CDCl₃) of compound 1xe

KYE-122-A, 12.7 mg, CDCl₃

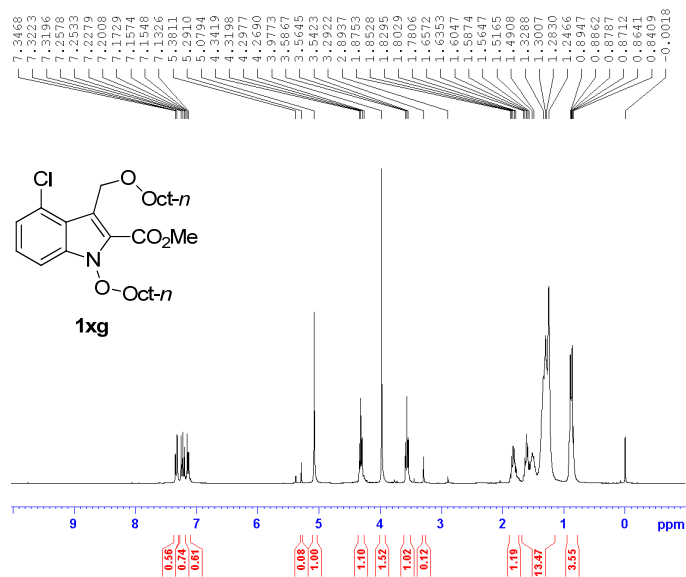


¹H NMR spectrum (300 MHz, CDCl₃) of compound 1xf



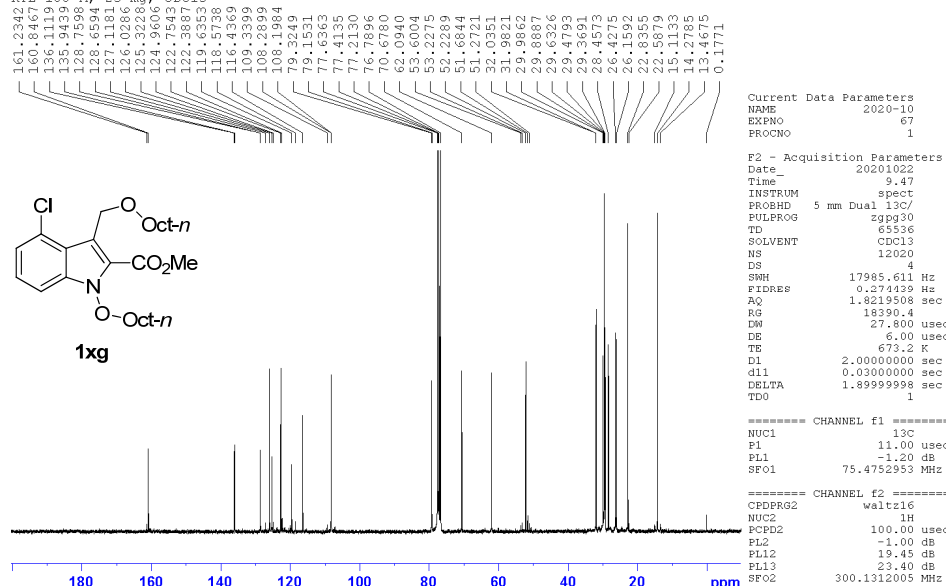
¹³C NMR spectrum (75 MHz, CDCl₃) of compound 1xf

KYE-188-A, 23 mg, CDCl3



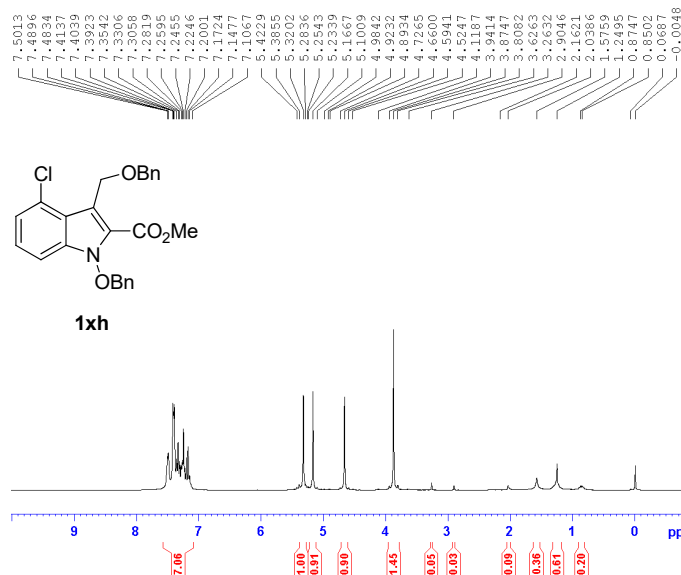
¹H NMR spectrum (300 MHz, CDCl₃) of compound 1xg

KYE-188-A, 23 mg, CDCl3



¹³C NMR spectrum (75 MHz, CDCl₃) of compound 1xg

KYE-190-A, 12.6 mg, CDCl₃



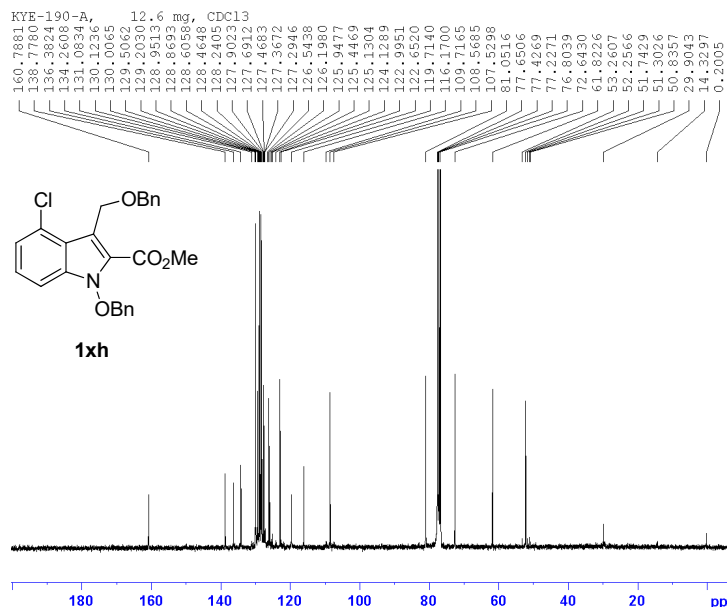
```
Current Data Parameters
NAME      2020-10
EXPNO    52
PROCNO   1

F2 - Acquisition Parameters
Date_    20201016
Time     20.04
INSTRUM spect
PROBHD   5 mm Dual 13C/
PULPROG zg30
TD       65536
SOLVENT  CDCl3
NS       32
DS       2
SWH      6172.839 Hz
FIDRES   0.094190 Hz
AQ       5.3084660 sec
RG       228.1
DW       81.000 usec
DE       6.00 usec
TE       673.2 K
D1       1.00000000 sec
TD0      1

===== CHANNEL f1 =====
NUC1     1H
P1       9.50 usec
PL1      -1.00 dB
SFO1     300.1318534 MHz

F2 - Processing parameters
SI       32768
SF       300.1300101 MHz
WDW      EM
SSB      0
LB       0.60 Hz
GB       0
PC       1.00
```

¹H NMR spectrum (300 MHz, CDCl₃) of compound 1xh



```
Current Data Parameters
NAME      2020-10
EXPNO    53
PROCNO   1

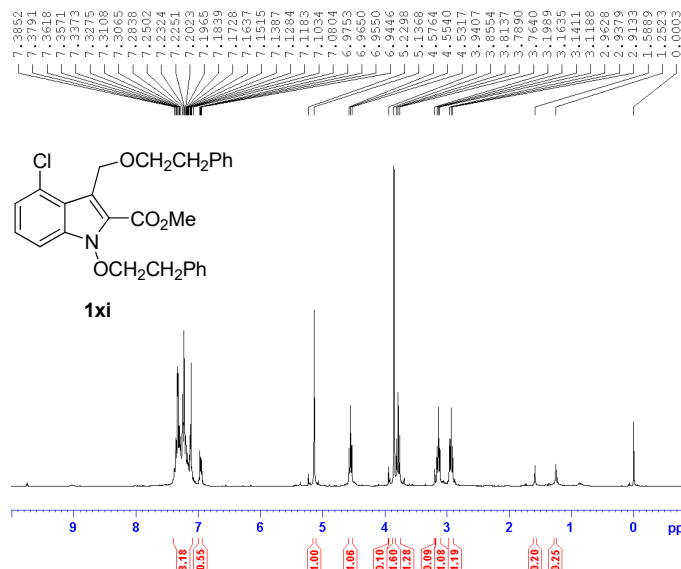
F2 - Acquisition Parameters
Date_    20201017
Time     14.36
INSTRUM spect
PROBHD   5 mm Dual 13C/
PULPROG zgpg30
TD       65536
SOLVENT  CDCl3
NS       17068
DS       4
SWH      17985.611 Hz
FIDRES   0.274439 Hz
AQ       1.8219508 sec
RG       1456.5
DW       27.800 usec
DE       6.00 usec
TE       673.2 K
D1       2.00000000 sec
d11      0.03000000 sec
DELTA    1.89999998 sec
TD0      1

===== CHANNEL f1 =====
NUC1     13C
P1       11.00 usec
PL1      -1.20 dB
SFO1     75.4752953 MHz

===== CHANNEL f2 =====
CDEPRG2 waltz16
NUC2     1H
PCPD2   100.00 usec
PL2     -1.00 dB
PL12    19.45 dB
PL13    23.40 dB
SFO2    300.1312005 MHz
```

¹³C NMR spectrum (75 MHz, CDCl₃) of compound 1xh

KYE-121-A, 13.6 mg, CDCl₃



```
Current Data Parameters
NAME      2020-02
EXPNO    48
PROCNO    1

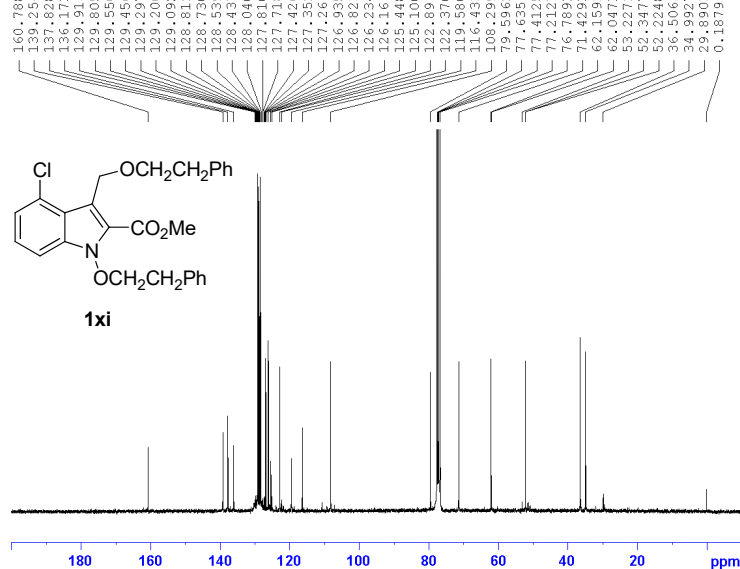
F2 - Acquisition Parameters
Date_     20200221
Time      11.51
INSTRUM   spect
PROBHD    5 mm Dual 13C/
PULPROG   zg30
TD         65536
SOLVENT   cdcl3
NS         32
DS         2
SWH        6172.839 Hz
FIDRES     0.094190 Hz
AQ         5.3084660 sec
RG         256
DW         81.000 usec
DE         6.00 usec
TE         290.5 K
D1         1.00000000 sec
TD0        1

===== CHANNEL f1 =====
NUC1       1H
P1         9.50 usec
PL1        -1.00 dB
SFO1       300.1318534 MHz

F2 - Processing Parameters
SI         32768
SF         300.1300090 MHz
WDW        EM
SSB        0
LB         0.60 Hz
GB         0
PC         1.00
```

¹H NMR spectrum (300 MHz, CDCl₃) of compound 1xi

KYE-121-A, 13.6 mg, CDCl₃



```
Current Data Parameters
NAME      2020-10
EXPNO    37
PROCNO    1

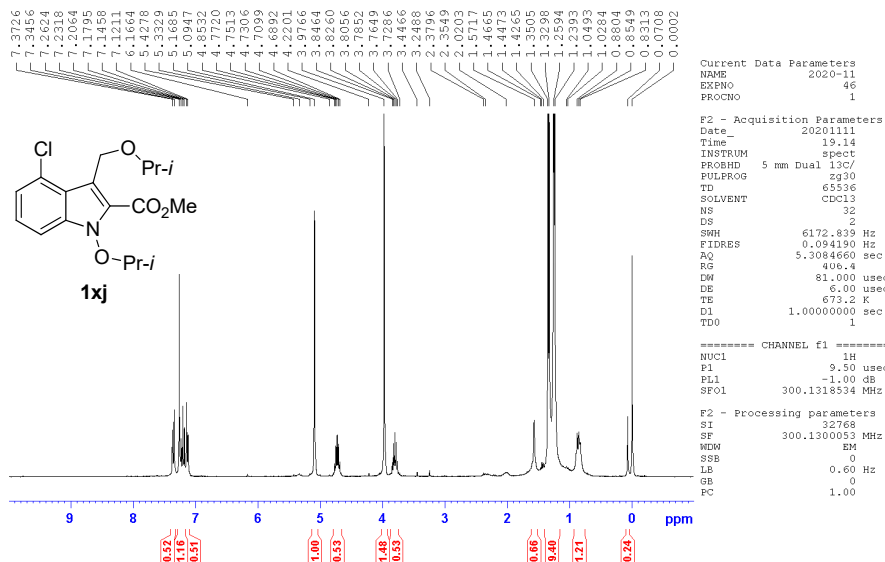
F2 - Acquisition Parameters
Date_     20201012
Time      10.01
INSTRUM   spect
PROBHD    5 mm Dual 13C/
PULPROG   zgpg30
TD         65536
SOLVENT   CDCl3
NS         35494
DS         4
SWH        17985.611 Hz
FIDRES     0.274439 Hz
AQ         1.8219508 sec
RG         16384
DW         27.800 usec
DE         6.00 usec
TE         673.2 K
D1         2.00000000 sec
d11        0.03000000 sec
DELTA     1.89999998 sec
TD0        1

===== CHANNEL f1 =====
NUC1       13C
P1         11.00 usec
PL1        -1.20 dB
SFO1       75.4752953 MHz

===== CHANNEL f2 =====
CDEPRG2   waltz16
NUC2       1H
PCPD2     100.00 usec
PL2        -1.00 dB
PL12       19.45 dB
PL13       23.40 dB
SFO2       300.1312005 MHz
```

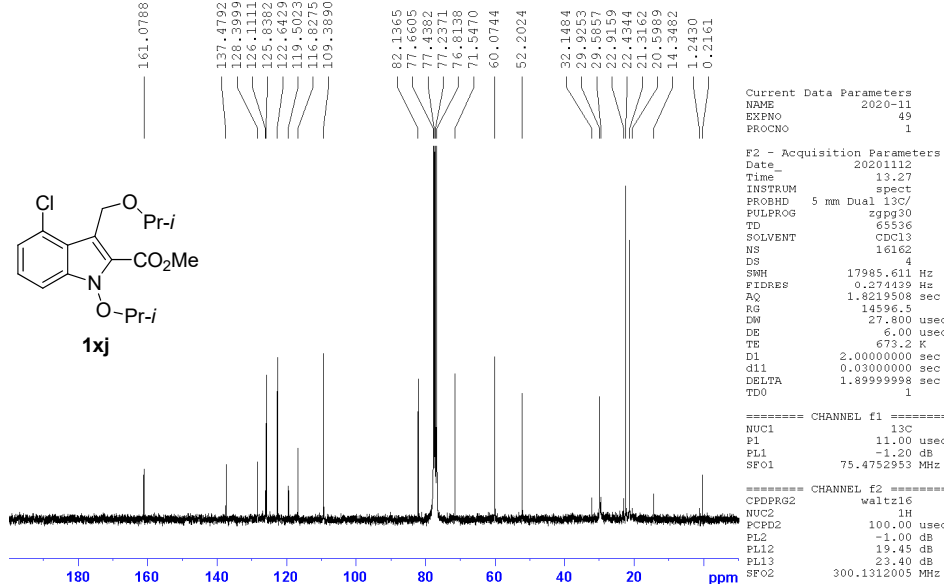
¹³C NMR spectrum (75 MHz, CDCl₃) of compound 1xi

KYE-187-A, 5.0 mg, CDCl₃



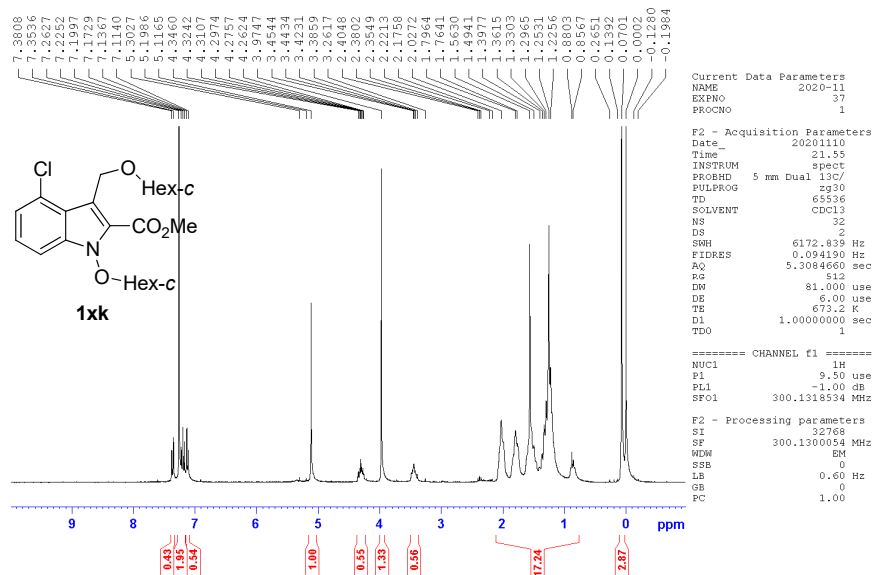
¹H NMR spectrum (300 MHz, CDCl₃) of compound 1xj

KYE-187-A, 5.0 mg, CDCl₃



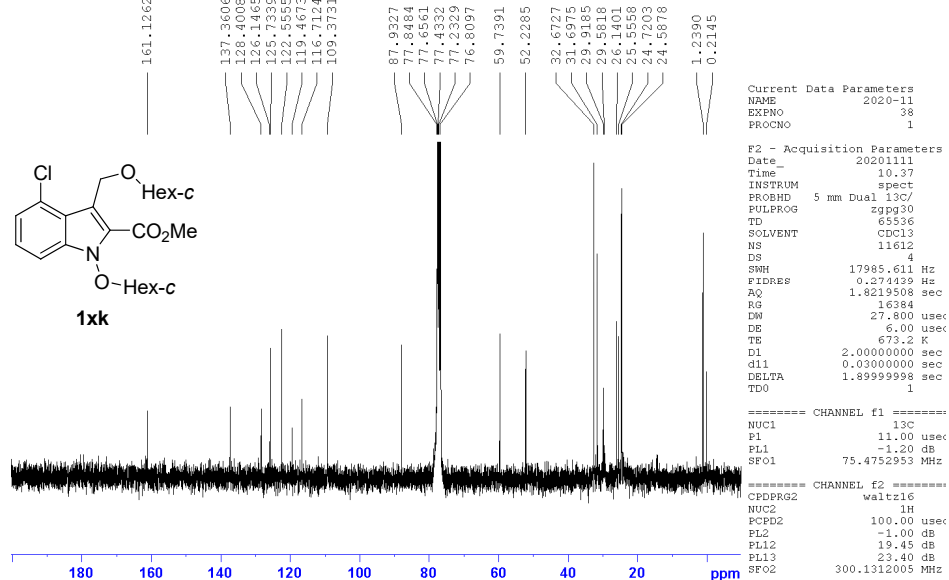
¹³C NMR spectrum (75 MHz, CDCl₃) of compound 1xj

KYE-205-A, 3.0 mg, CDCl₃



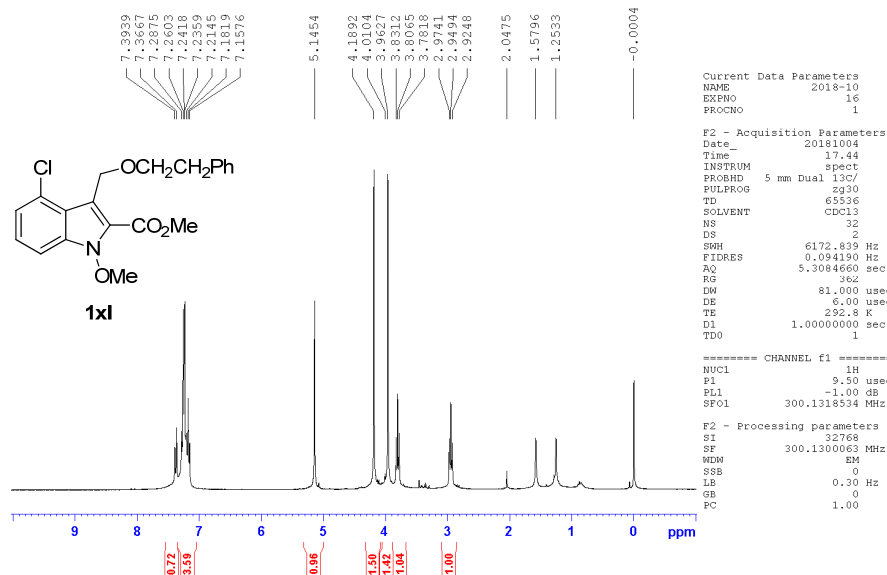
¹H NMR spectrum (300 MHz, CDCl₃) of compound 1xk

KYE-205-A, 3.0 mg, CDCl₃



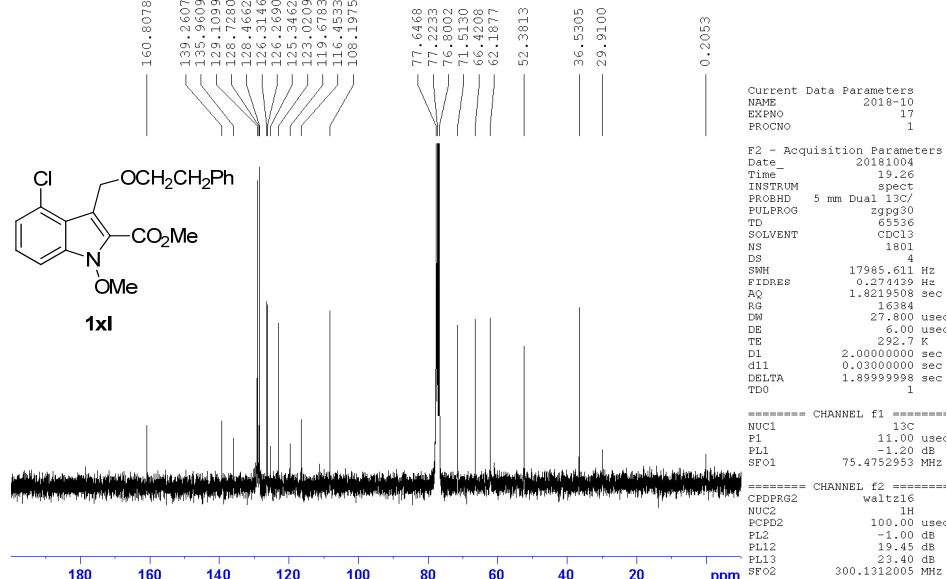
¹³C NMR spectrum (75 MHz, CDCl₃) of compound 1xk

CHO-410-A, 6.1 mg, CDCl₃



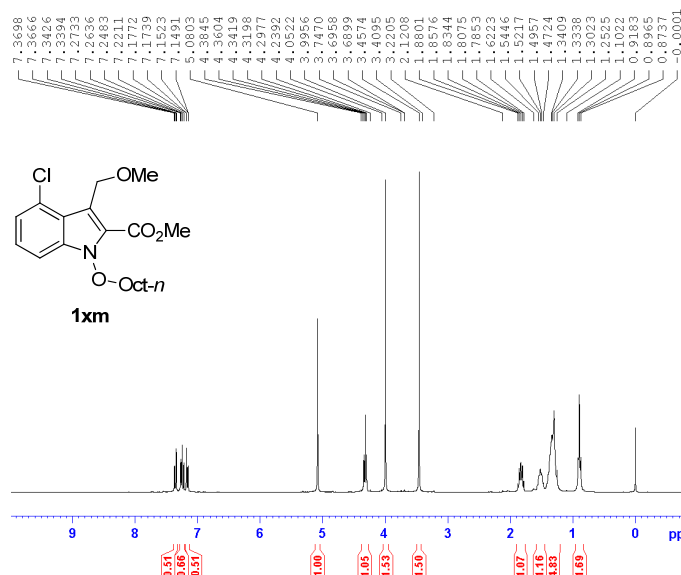
¹H NMR spectrum (300 MHz, CDCl₃) of compound 1xl

CHO-410-A, 6.1 mg, CDCl₃



¹³C NMR spectrum (75 MHz, CDCl₃) of compound 1xl

KYE-227-A, 13 mg, CDCl₃



```

Current Data Parameters
NAME      2021-1
EXPNO    118
PROCNO   1

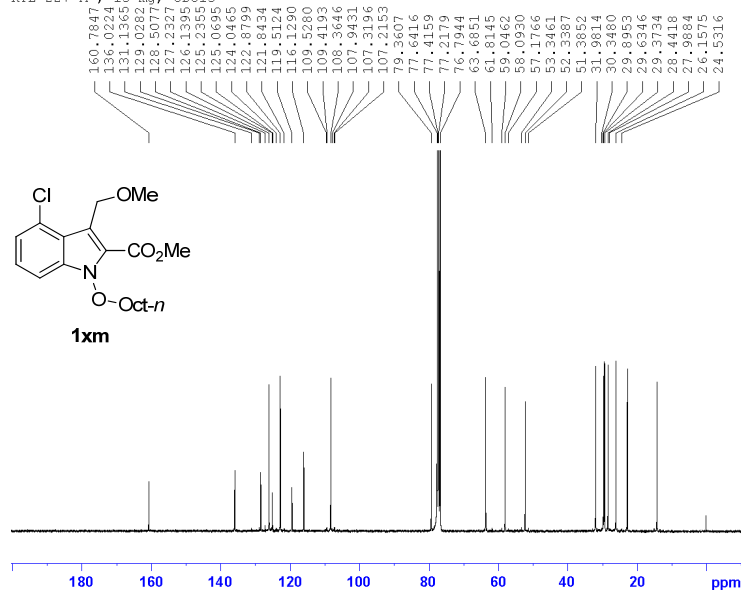
F2 - Acquisition Parameters
Date_    20210130
Time     18.28
INSTRUM spect
PROBHD   5 mm Dual 13C/
PULPROG zg30
TD       65536
SOLVENT  CDCl3
NS       16
DS       2
SWH      6172.839 Hz
FIDRES   0.094190 Hz
AQ       5.3084660 sec
RG       403.2
DM       81.000 usec
DE       6.00 usec
TE       673.2 K
D1       1.00000000 sec
TD0      1

===== CHANNEL f1 =====
NUC1     1H
P1       9.50 usec
PL1      -1.00 dB
SFO1     300.1318534 MHz

F2 - Processing parameters
SI       32768
SF       300.1300048 MHz
WDW      EM
SSB      0
LB       0.60 Hz
GB       0
PC       1.00
  
```

¹H NMR spectrum (300 MHz, CDCl₃) of compound 1xm

KYE-227-A, 13 mg, CDCl₃



```

Current Data Parameters
NAME      2021-1
EXPNO    112
PROCNO   1

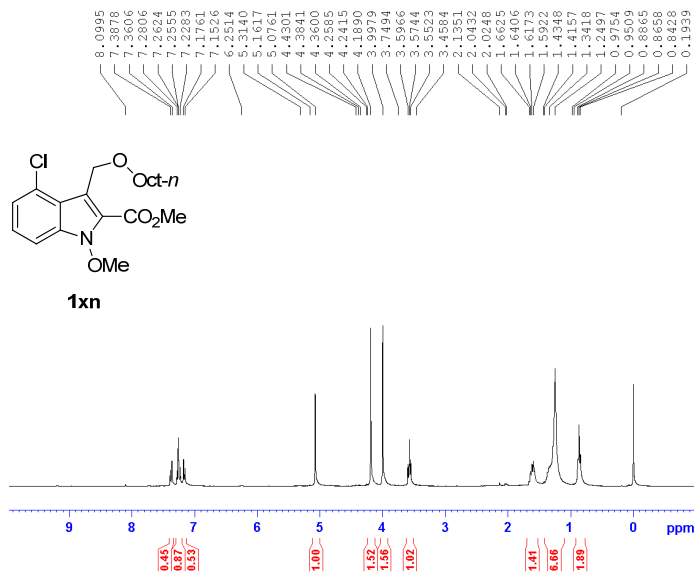
F2 - Acquisition Parameters
Date_    20210201
Time     10.36
INSTRUM spect
PROBHD   5 mm Dual 13C/
PULPROG zgpg30
TD       65536
SOLVENT  CDCl3
NS       37080
DS       4
SWH      17985.611 Hz
FIDRES   0.274439 Hz
AQ       1.8219508 sec
RG       16384
DM       27.800 usec
DE       6.00 usec
TE       673.2 K
D1       2.00000000 sec
d11      0.03000000 sec
DELTA    1.89999998 sec
TD0      1

===== CHANNEL f1 =====
NUC1     13C
P1       11.00 usec
PL1      -1.20 dB
SFO1     75.4752953 MHz

===== CHANNEL f2 =====
CDEBERG2 waltz16
NUC2     1H
PCPD2    100.00 usec
PL2      -1.00 dB
PL12     19.45 dB
PL13     23.40 dB
SFO2     300.1312005 MHz
  
```

¹³C NMR spectrum (75 MHz, CDCl₃) of compound 1xm

KYE-228-A, 15 mg, CDCl₃



```
Current Data Parameters
NAME      2021-2
EXPNO    6
PROCNO   1

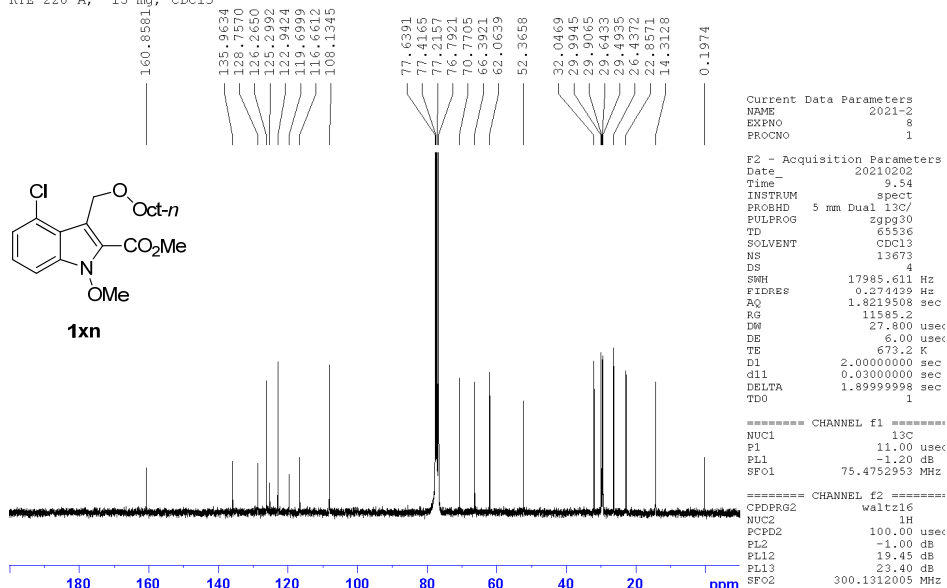
F2 - Acquisition Parameters
Date_    20210201
Time     18.40
INSTRUM spect
PROBHD   5 mm Dual 13C/
PULPROG zg30
TD       65536
SOLVENT  CDCl3
NS       32
DS       2
SWH      6172.839 Hz
FIDRES   0.094190 Hz
AQ       5.3084660 sec
RG       436.1
DM       81.000 usec
DE       6.00 usec
TE       673.2 K
D1       1.00000000 sec
TDO      1

===== CHANNEL f1 =====
NUC1     1H
P1       9.50 usec
PL1      -1.00 dB
SFO1    300.1318534 MHz

F2 - Processing parameters
SI       32768
SF       300.1300053 MHz
WDW      EM
SSB      0
LB       0.60 Hz
GB       0
PC       1.00
```

¹H NMR spectrum (300 MHz, CDCl₃) of compound 1xn

KYE-228-A, 15 mg, CDCl₃



```
Current Data Parameters
NAME      2021-2
EXPNO    8
PROCNO   1

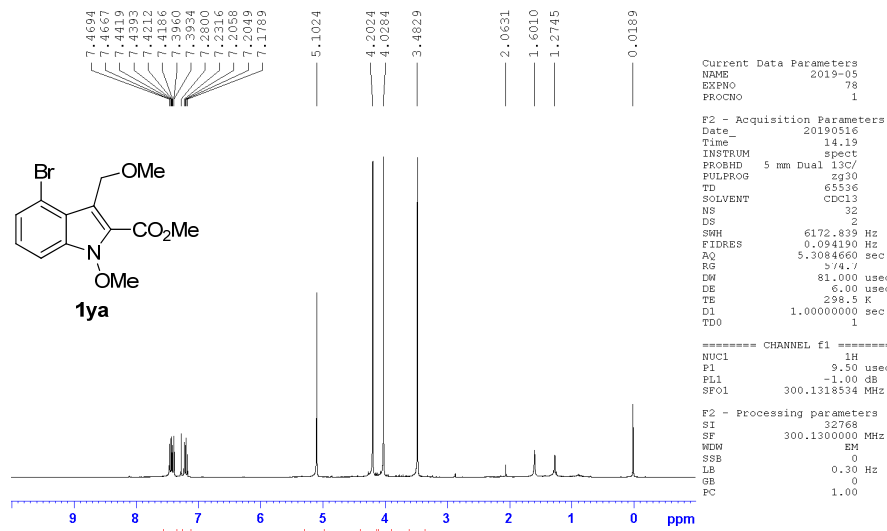
F2 - Acquisition Parameters
Date_    20210202
Time     9.54
INSTRUM spect
PROBHD   5 mm Dual 13C/
PULPROG zgpg30
TD       65536
SOLVENT  CDCl3
NS       13673
DS       4
SWH      17985.611 Hz
FIDRES   0.274439 Hz
AQ       1.8219508 sec
RG       1158.2
DM       27.800 usec
DE       6.00 usec
TE       673.2 K
D1       2.00000000 sec
d11      0.03000000 sec
DELTA    1.89999998 sec
TDO      1

===== CHANNEL f1 =====
NUC1     13C
P1       11.00 usec
PL1      -1.20 dB
SFO1    75.4752953 MHz

===== CHANNEL f2 =====
CDEPRG2 waltz16
NUC2     1H
PCPD2   100.00 usec
PL2     -1.00 dB
PL12    19.45 dB
PL13    23.40 dB
SFO2    300.1312005 MHz
```

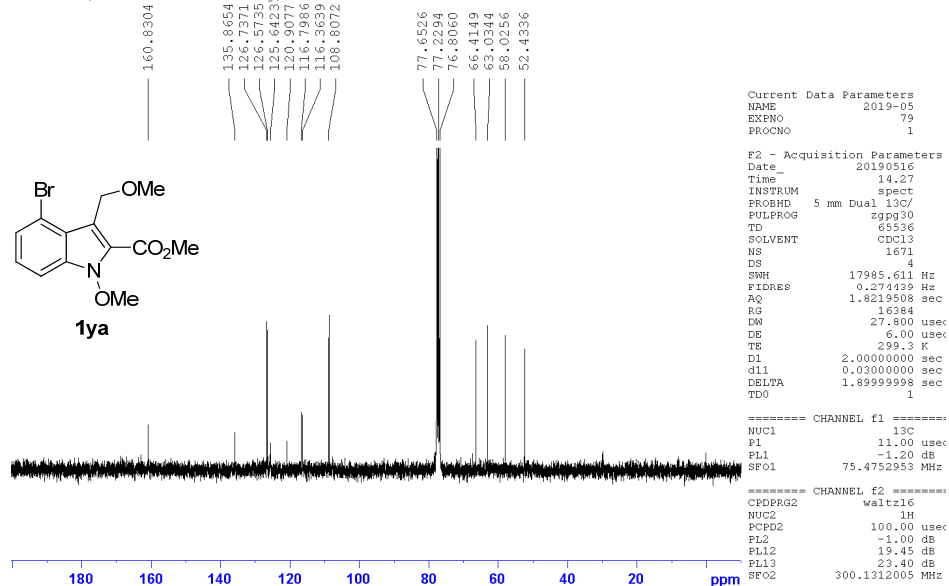
¹³C NMR spectrum (75 MHz, CDCl₃) of compound 1xn

CHO-449-A, 7.3 mg, CDCl₃

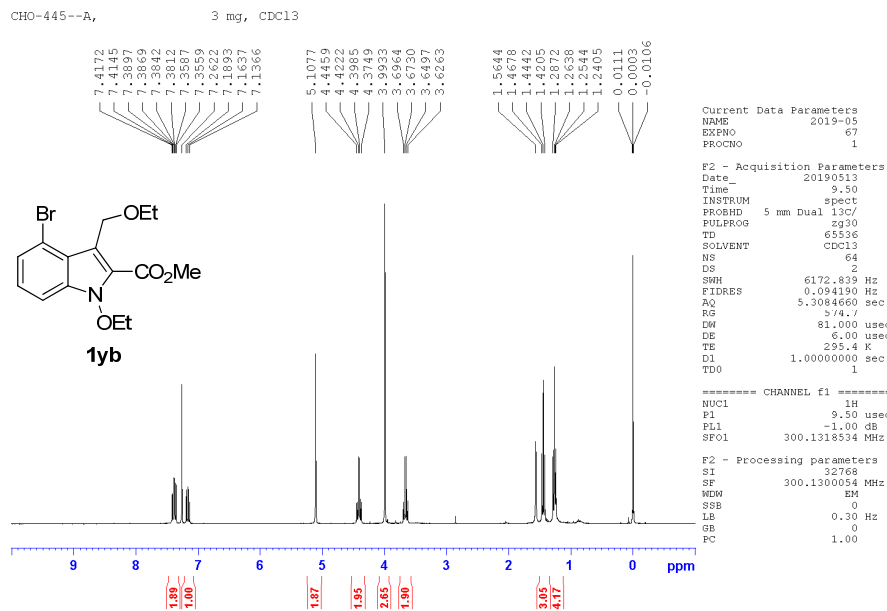


¹H NMR spectrum (300 MHz, CDCl₃) of compound 1ya

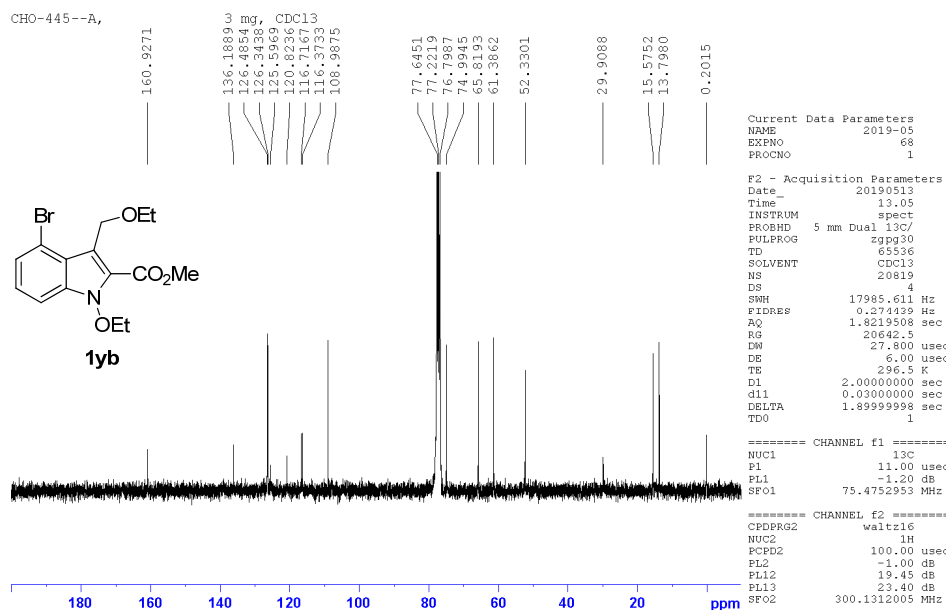
CHO-449-A, 7.3 mg, CDCl₃



¹³C NMR spectrum (75 MHz, CDCl₃) of compound 1ya

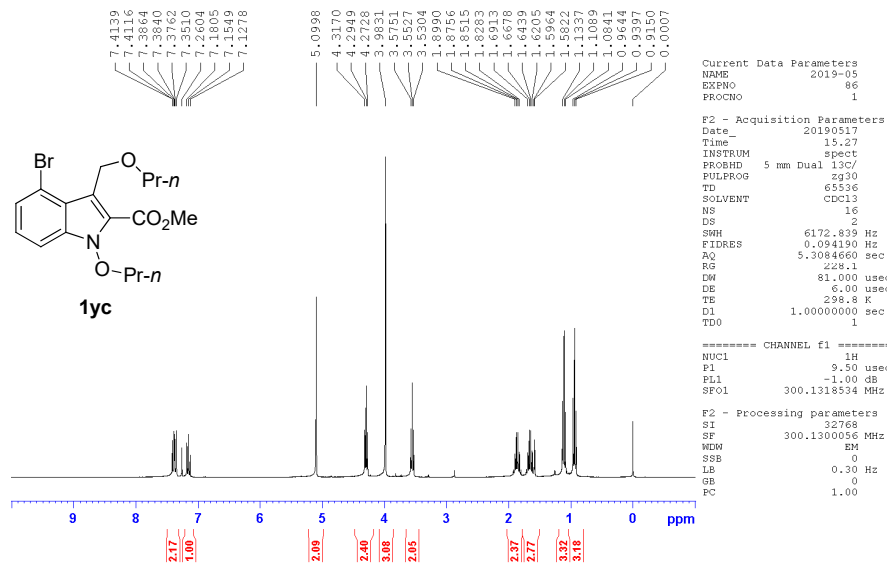


¹H NMR spectrum (300 MHz, CDCl₃) of compound 1yb

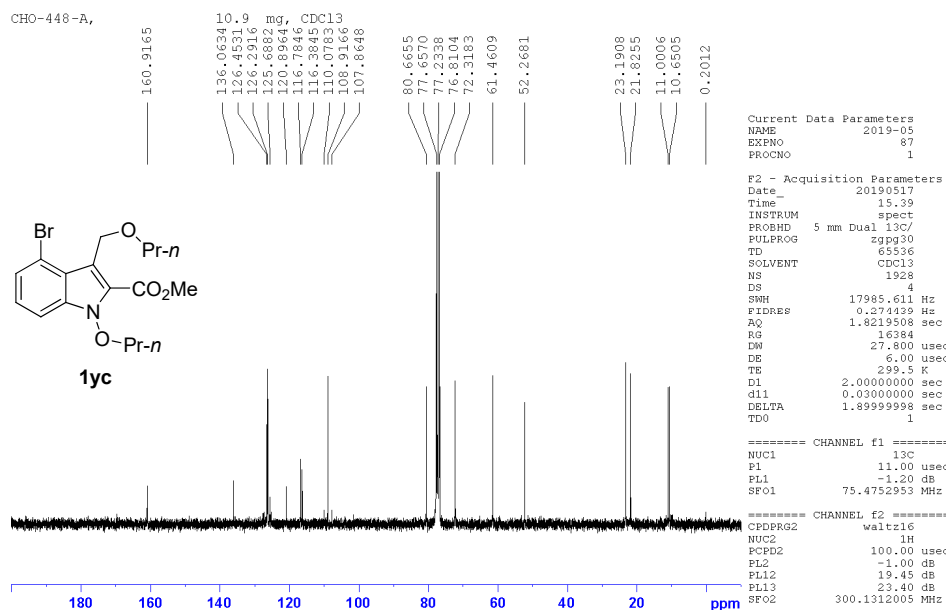


¹³C NMR spectrum (75 MHz, CDCl₃) of compound 1yb

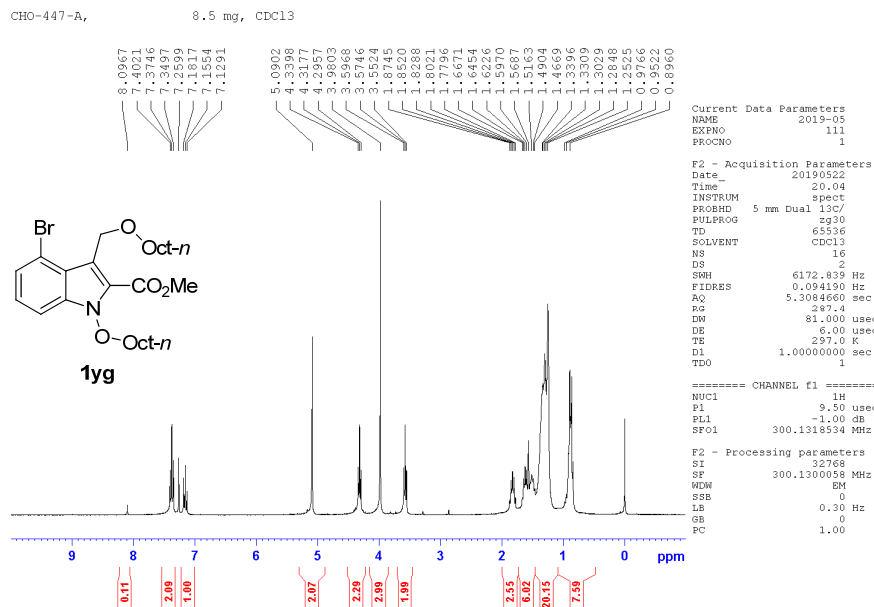
CHO-448-A, 10.9 mg, CDCl₃



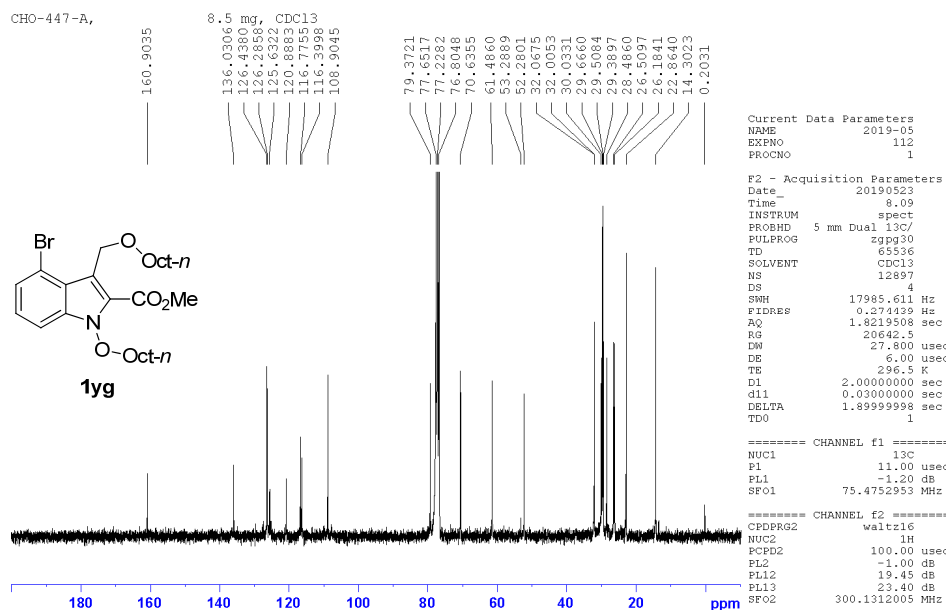
¹H NMR spectrum (300 MHz, CDCl₃) of compound 1yc



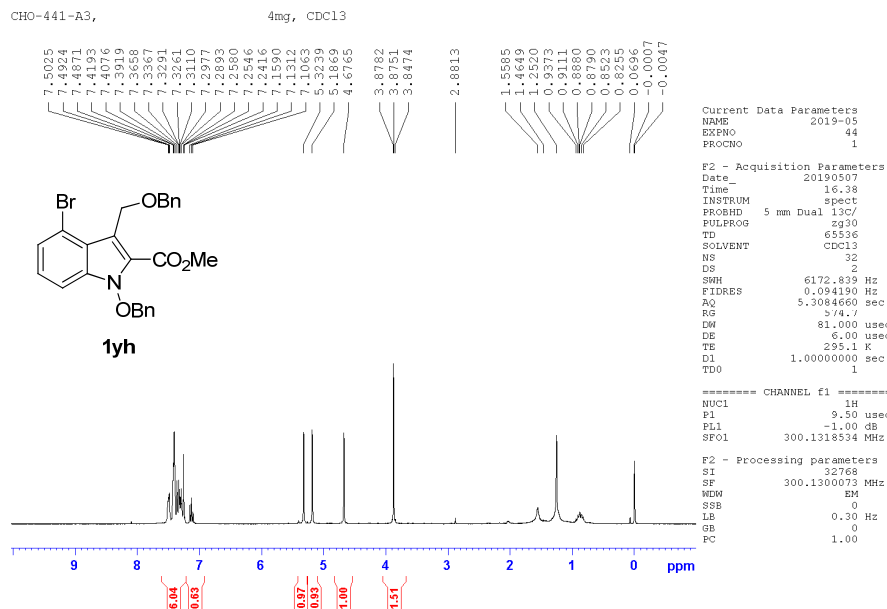
¹³C NMR spectrum (75 MHz, CDCl₃) of compound 1yc



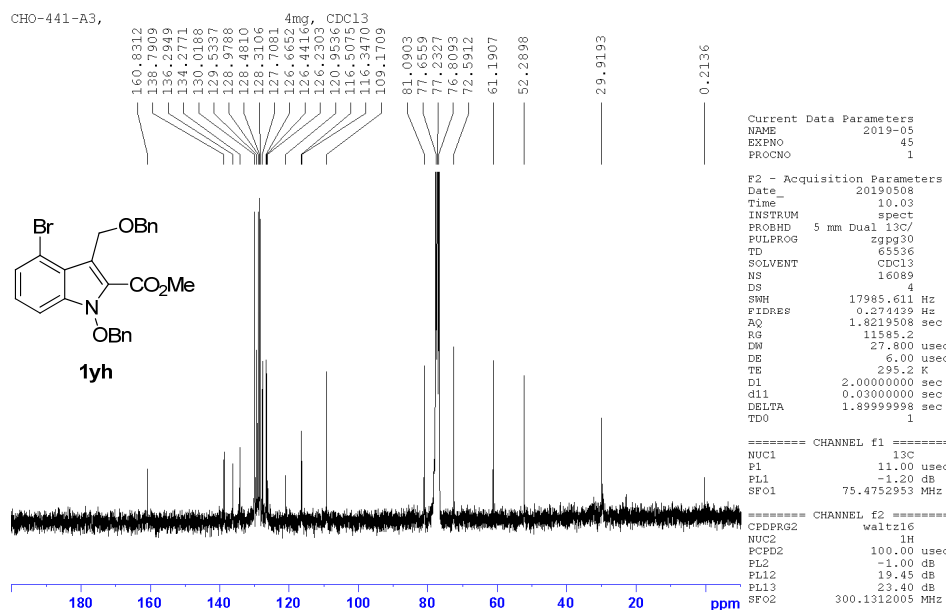
¹H NMR spectrum (300 MHz, CDCl₃) of compound 1yg



¹³C NMR spectrum (75 MHz, CDCl₃) of compound 1yg



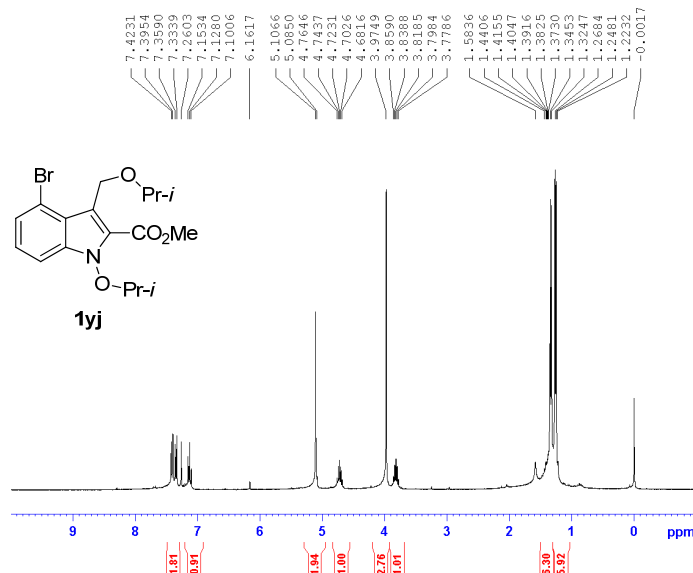
¹H NMR spectrum (300 MHz, CDCl₃) of compound 1yh



¹³C NMR spectrum (75 MHz, CDCl₃) of compound 1yh

CHO-446--A,

6.3 mg, CDCl₃



Current Data Parameters
 NAME 2019-05
 EXPNO 69
 PROCNO 1

F2 - Acquisition Parameters
 Date_ 20190514
 Time 8.31
 INSTRUM spect
 PROBHD 5 mm Dual 13C/
 PULPROG zg30
 TD 65536
 SOLVENT cdcl3
 NS 16
 DS 2
 SWH 6172.839 Hz
 FIDRES 0.094190 Hz
 AQ 5.3084660 sec
 RG 436.1
 DW 81.000 usec
 DE 6.00 usec
 TE 295.3 K
 D1 1.0000000 sec
 TD0 1

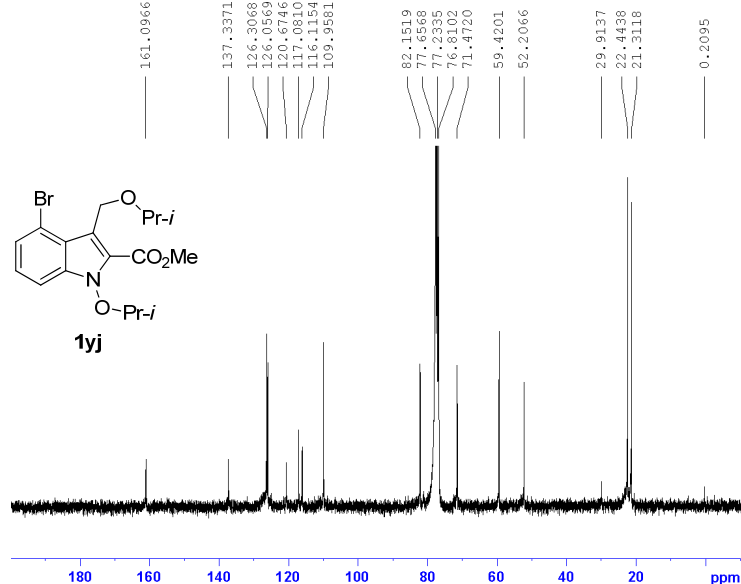
===== CHANNEL f1 =====
 NUC1 1H
 P1 9.50 usec
 PL1 -1.00 dB
 SFO1 300.1318534 MHz

F2 - Processing parameters
 SI 22768
 SF 300.1300053 MHz
 WDM EM
 SSB 0
 LB 0.30 Hz
 GB 0
 PC 1.00

¹H NMR spectrum (300 MHz, CDCl₃) of compound 1yj

CHO-446--A,

6.3 mg, CDCl₃



Current Data Parameters
 NAME 2019-05
 EXPNO 70
 PROCNO 1

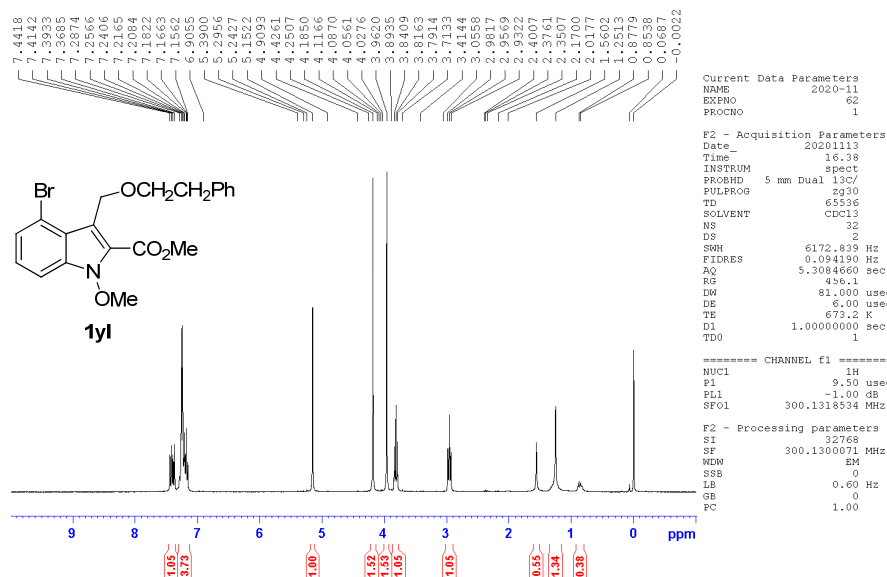
F2 - Acquisition Parameters
 Date_ 20190514
 Time 12.33
 INSTRUM spect
 PROBHD 5 mm Dual 13C/
 PULPROG zgpg30
 TD 65536
 SOLVENT CDCl3
 NS 21665
 DS 4
 SWH 17985.611 Hz
 FIDRES 0.274439 Hz
 AQ 1.8219508 sec
 RG 18390.4
 DW 27.800 usec
 DE 6.00 usec
 TE 297.3 K
 D1 2.0000000 sec
 d11 0.0300000 sec
 DELTA 1.8999998 sec
 TD0 1

===== CHANNEL f1 =====
 NUC1 13C
 P1 11.00 usec
 PL1 -1.20 dB
 SFO1 75.4752953 MHz

===== CHANNEL f2 =====
 CPDPRG2 waltz16
 NUC2 1H
 FCP02 100.00 usec
 PL2 -1.00 dB
 PL12 19.45 dB
 PL13 23.40 dB
 SFO2 300.1312005 MHz

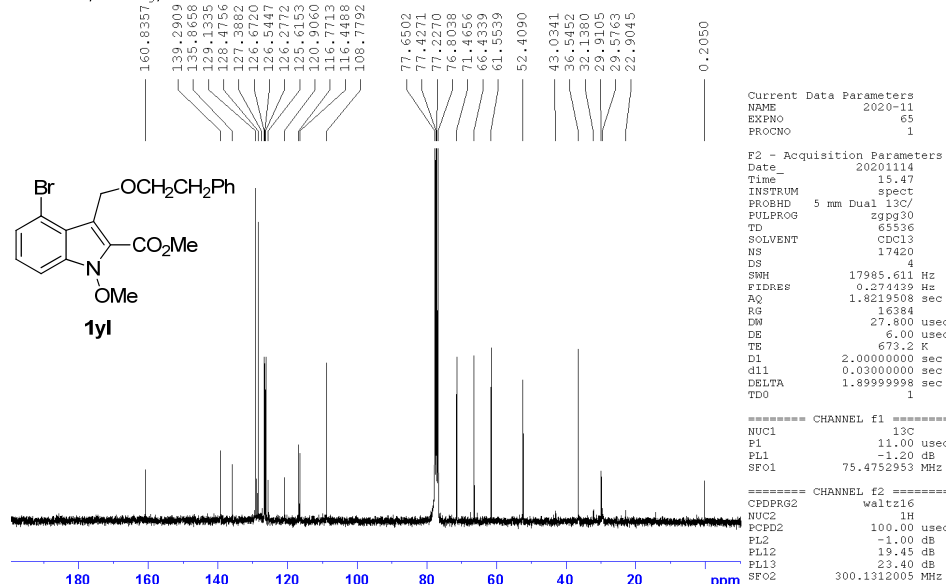
¹³C NMR spectrum (75 MHz, CDCl₃) of compound 1yj

KYE-206-A, 5.0 mg, CDCl₃



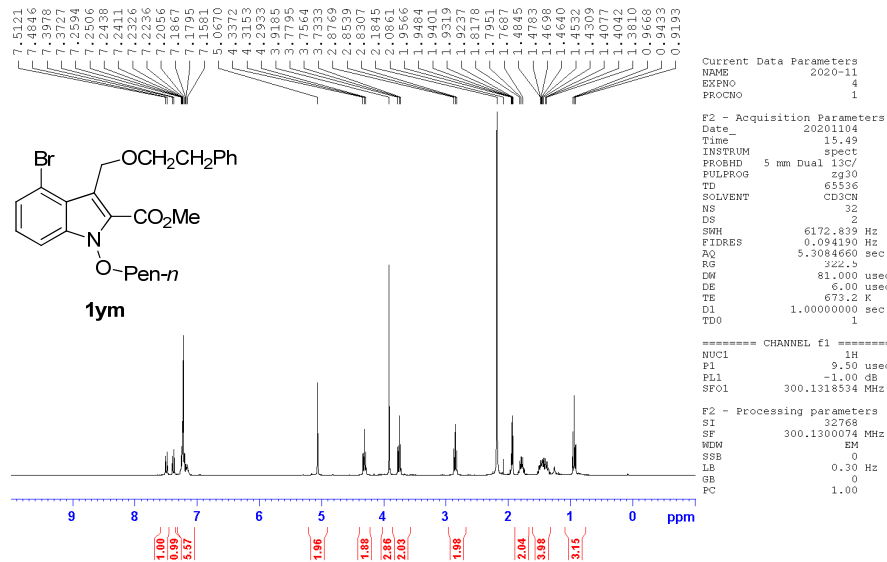
¹H NMR spectrum (300 MHz, CDCl₃) of compound 1yl

KYE-206-A, 5.0 mg, CDCl₃



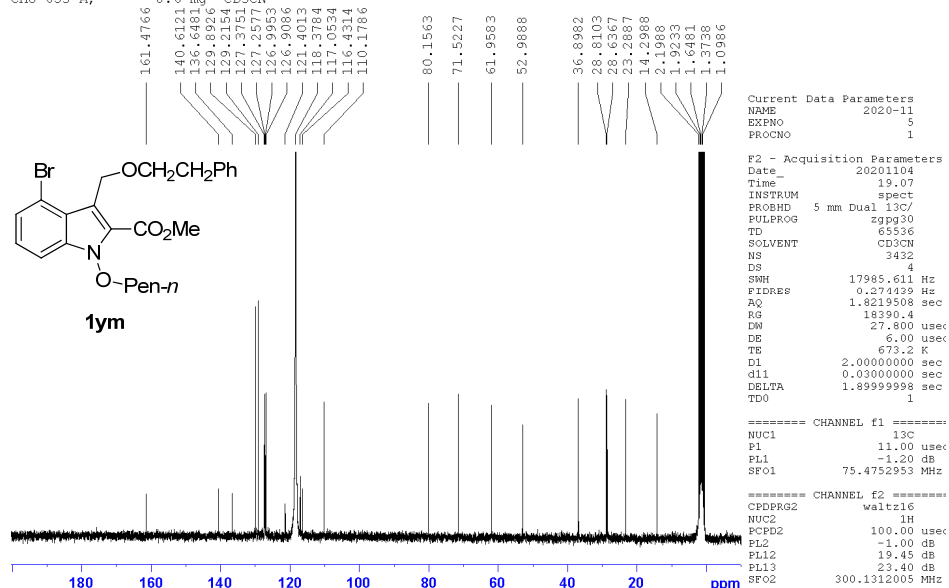
¹³C NMR spectrum (75 MHz, CDCl₃) of compound 1yl

CHO--653-A, 8.6 mg CD3CN



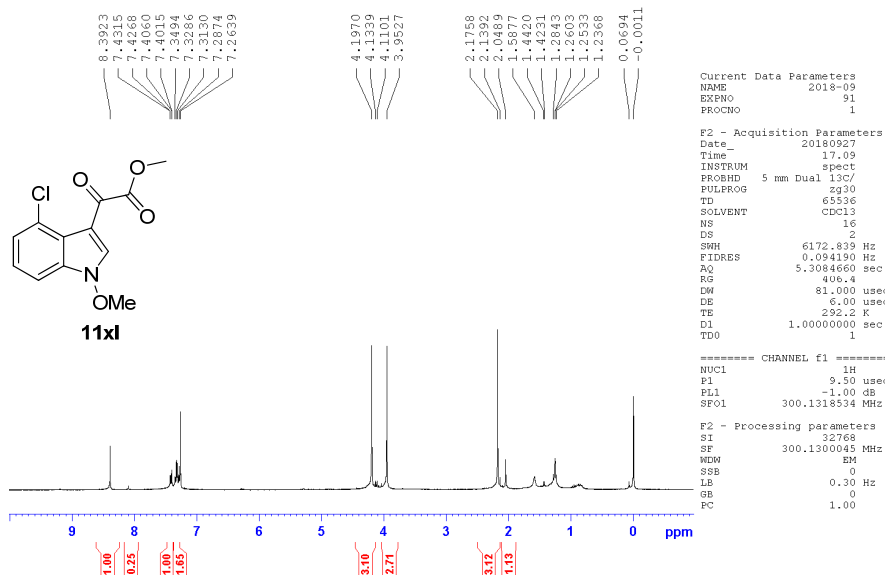
¹H NMR spectrum (300 MHz, CD₃CN) of compound 1ym

CHO--653-A, 8.6 mg CD3CN



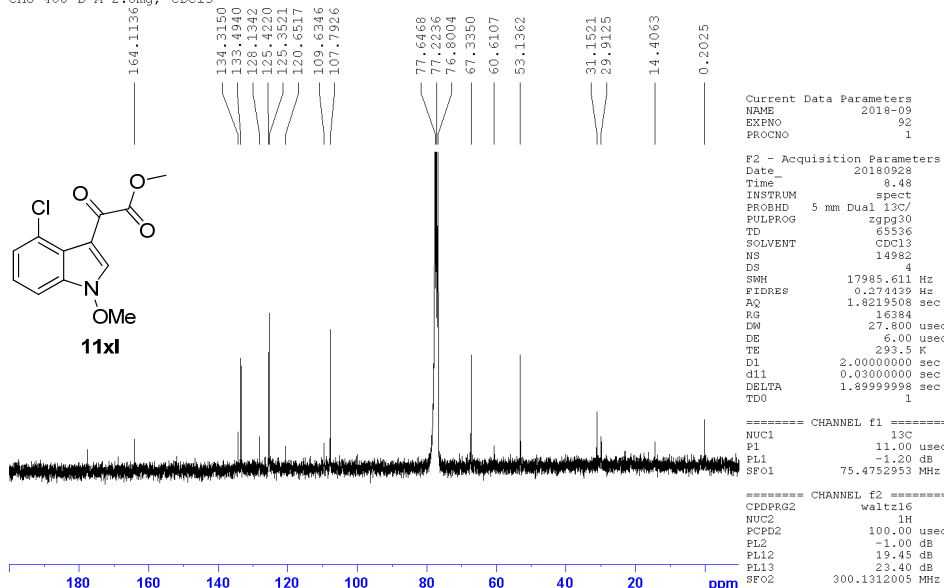
¹³C NMR spectrum (75 MHz, CD₃CN) of compound 1ym

CHO-408-D-A 2.8mg, CDCl3



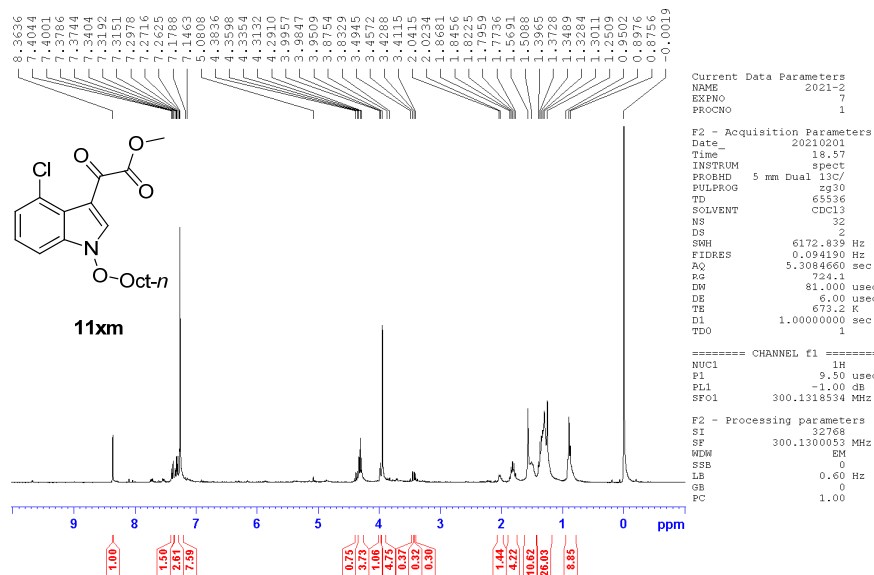
¹H NMR spectrum (300 MHz, CDCl₃) of compound 11xl

CHO-408-D-A 2.8mg, CDCl3



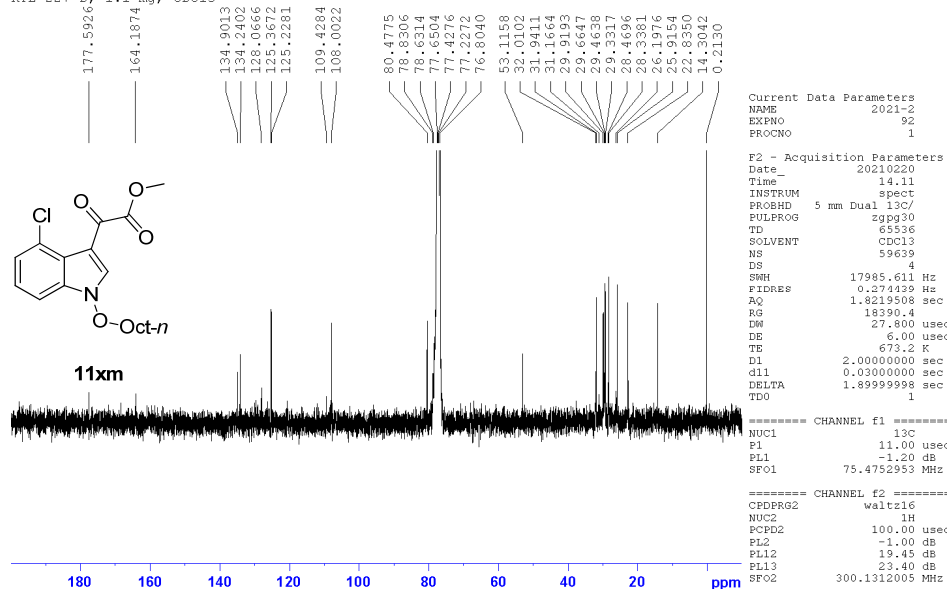
¹³C NMR spectrum (75 MHz, CDCl₃) of compound 11xl

KYE-227-B, 1 mg, CDCl₃



¹H NMR spectrum (300 MHz, CDCl₃) of compound 11xm

KYE-227-B, 1.1 mg, CDCl₃



¹³C NMR spectrum (75 MHz, CDCl₃) of compound 11xm