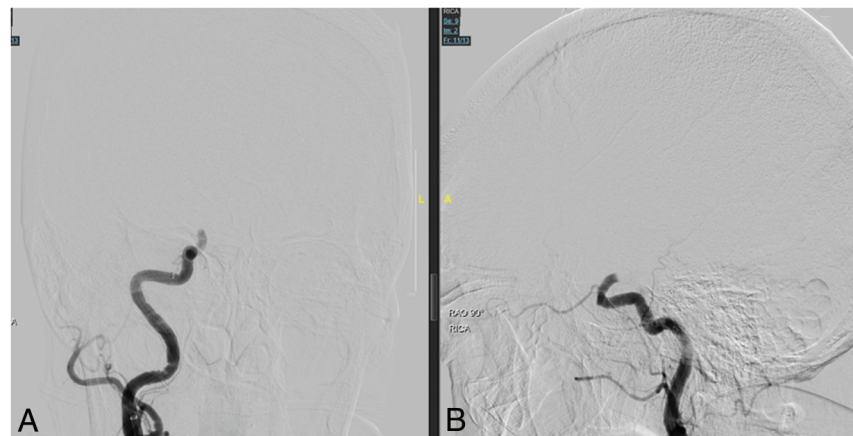
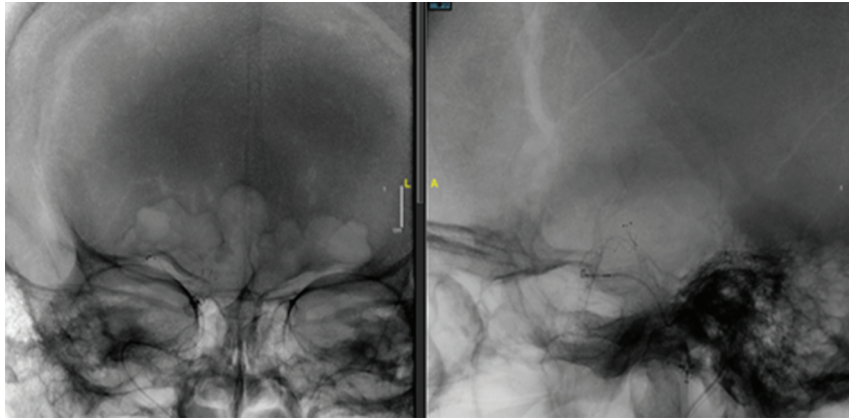




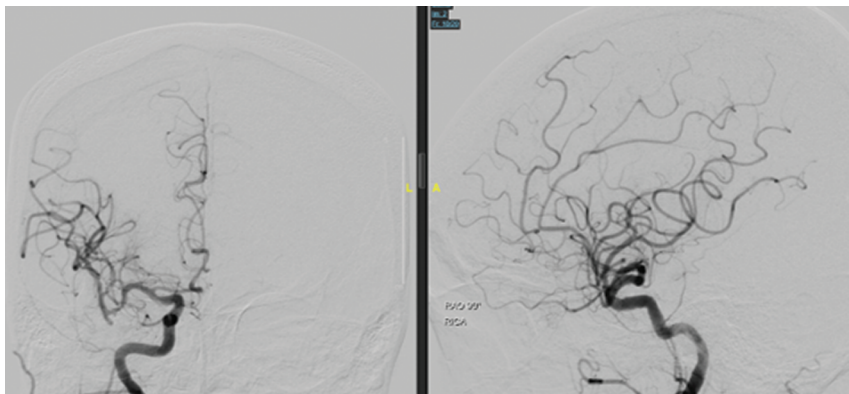
ON-LINE FIG 1. Prethrombectomy right (A) and left (B) carotid angiograms (frontal view) demonstrate long-segment occlusion from the petrous segment to right ICA termination, bulging into the origin of the right MCA.



ON-LINE FIG 2. After aspiration with the JET 7, the petrous and cavernous parts of the ICA have recanalized with residual clot in the supraclinoid ICA as seen in the frontal (A) and lateral (B) projections.



ON-LINE FIG 3. These frontal (A) and lateral (B) radiographs depict the process of retrieval of the stent and JET 7 together as a single assembly.



ON-LINE FIG 4. These completion angiograms show complete recanalization of the long-segment ICA occlusion with a TIC1 3 reperfusion.