

On-line Table 1: STV percentile values per gestational week^a

Week	3rd Percentile (mL)	15th Percentile (mL)	50th Percentile (mL)	85th Percentile (mL)	97th Percentile (mL)
26	75.67 ± 1.69	85.58 ± 1.81	97.74 ± 1.97	109.90 ± 2.12	119.81 ± 2.25
27	83.08 ± 3.05	93.53 ± 3.27	106.36 ± 3.54	119.20 ± 3.81	129.65 ± 4.03
28	93.45 ± 3.31	104.65 ± 3.55	118.39 ± 3.85	132.13 ± 4.15	143.33 ± 4.39
29	104.98 ± 3.95	117.06 ± 4.25	131.88 ± 4.62	146.71 ± 4.99	158.79 ± 5.3
30	120.10 ± 5.32	133.32 ± 5.72	149.55 ± 6.22	165.77 ± 6.72	178.99 ± 7.13
31	138.22 ± 5.71	152.94 ± 6.22	171.00 ± 6.86	189.07 ± 7.49	203.78 ± 8.01
32	155.81 ± 5.02	172.35 ± 5.62	192.65 ± 6.36	212.95 ± 7.09	229.49 ± 7.69
33	169.61 ± 3.48	188.20 ± 4.14	211.01 ± 4.96	233.82 ± 5.78	252.40 ± 6.44
34	179.22 ± 2.6	200.11 ± 3.36	225.76 ± 4.3	251.40 ± 5.24	272.29 ± 6
35	187.66 ± 2.72	211.22 ± 3.61	240.14 ± 4.7	269.07 ± 5.8	292.63 ± 6.68
36	197.29 ± 3.15	223.92 ± 4.14	256.60 ± 5.37	289.27 ± 6.59	315.90 ± 7.59
37	207.23 ± 2.9	237.26 ± 4.01	274.11 ± 5.36	310.97 ± 6.71	341.00 ± 7.81
38	215.80 ± 2.36	249.57 ± 3.58	291.02 ± 5.07	332.48 ± 6.57	366.25 ± 7.79
39	221.33 ± 1.18	258.33 ± 1.97	303.74 ± 2.95	349.16 ± 3.92	386.16 ± 4.72

^aData are mean ± SD.**On-line Table 2: RHV percentile values per gestational week^a**

Week	3rd Percentile (mL)	15th Percentile (mL)	50th Percentile (mL)	85th Percentile (mL)	97th Percentile (mL)
26	37.28 ± 0.79	42.37 ± 0.86	48.61 ± 0.95	54.85 ± 1.04	59.94 ± 1.12
27	40.71 ± 1.4	46.12 ± 1.53	52.76 ± 1.69	59.40 ± 1.85	64.81 ± 1.98
28	45.46 ± 1.52	51.32 ± 1.67	58.51 ± 1.85	65.69 ± 2.02	71.55 ± 2.17
29	50.85 ± 1.88	57.22 ± 2.05	65.04 ± 2.27	72.87 ± 2.48	79.24 ± 2.65
30	58.19 ± 2.62	65.20 ± 2.84	73.80 ± 3.11	82.40 ± 3.38	89.41 ± 3.6
31	67.22 ± 2.89	75.02 ± 3.15	84.60 ± 3.49	94.18 ± 3.82	101.99 ± 4.09
32	76.28 ± 2.64	85.01 ± 2.94	95.74 ± 3.31	106.46 ± 3.68	115.20 ± 3.98
33	83.59 ± 1.85	93.34 ± 2.18	105.31 ± 2.58	117.28 ± 2.98	127.03 ± 3.3
34	88.63 ± 1.32	99.50 ± 1.69	112.85 ± 2.14	126.19 ± 2.6	137.07 ± 2.97
35	92.69 ± 1.25	104.86 ± 1.68	119.80 ± 2.21	134.73 ± 2.73	146.90 ± 3.17
36	97.03 ± 1.41	110.67 ± 1.88	127.42 ± 2.47	144.17 ± 3.06	157.81 ± 3.54
37	101.55 ± 1.36	116.80 ± 1.87	135.52 ± 2.5	154.24 ± 3.12	169.49 ± 3.63
38	105.69 ± 1.18	122.64 ± 1.73	143.46 ± 2.4	164.27 ± 3.07	181.23 ± 3.61
39	108.51 ± 0.62	126.90 ± 0.97	149.48 ± 1.4	172.05 ± 1.83	190.45 ± 2.18

^aData are mean ± SD.**On-line Table 3: LHV percentile values per gestational week^a**

Week	3rd Percentile (mL)	15th Percentile (mL)	50th Percentile (mL)	85th Percentile (mL)	97th Percentile (mL)
26	37.47 ± 0.72	42.58 ± 0.78	48.84 ± 0.85	55.11 ± 0.93	60.21 ± 0.99
27	40.65 ± 1.32	46.01 ± 1.43	52.6 ± 1.56	59.18 ± 1.69	64.55 ± 1.79
28	45.26 ± 1.52	50.98 ± 1.63	58 ± 1.78	65.03 ± 1.92	70.75 ± 2.04
29	50.7 ± 1.9	56.86 ± 2.05	64.41 ± 2.23	71.96 ± 2.41	78.11 ± 2.56
30	58.07 ± 2.61	64.78 ± 2.81	73 ± 3.05	81.23 ± 3.29	87.94 ± 3.49
31	67.09 ± 2.89	74.52 ± 3.14	83.65 ± 3.45	92.77 ± 3.76	100.2 ± 4.02
32	76.29 ± 2.72	84.61 ± 3.01	94.83 ± 3.37	105.04 ± 3.73	113.37 ± 4.03
33	84 ± 2.02	93.33 ± 2.34	104.78 ± 2.74	116.22 ± 3.13	125.55 ± 3.46
34	89.63 ± 1.51	100.05 ± 1.87	112.84 ± 2.31	125.64 ± 2.74	136.06 ± 3.1
35	94.39 ± 1.49	106.04 ± 1.89	120.34 ± 2.38	134.63 ± 2.88	146.28 ± 3.28
36	99.57 ± 1.68	112.58 ± 2.12	128.55 ± 2.65	144.51 ± 3.19	157.52 ± 3.63
37	104.92 ± 1.58	119.4 ± 2.06	137.18 ± 2.64	154.95 ± 3.21	169.43 ± 3.69
38	109.7 ± 1.36	125.77 ± 1.87	145.5 ± 2.5	165.23 ± 3.12	181.3 ± 3.64
39	112.95 ± 0.72	130.37 ± 1.05	151.75 ± 1.45	173.14 ± 1.85	190.56 ± 2.18

^aData are mean ± SD.

On-line Table 4: CV percentile values per gestational week^a

Week	3rd Percentile (mL)	15th Percentile (mL)	50th Percentile (mL)	85th Percentile (mL)	97th Percentile (mL)
26	3.13 ± 0.1	3.44 ± 0.11	3.83 ± 0.13	4.23 ± 0.14	4.54 ± 0.16
27	3.51 ± 0.14	3.89 ± 0.17	4.36 ± 0.2	4.82 ± 0.23	5.21 ± 0.26
28	3.96 ± 0.15	4.44 ± 0.18	5.03 ± 0.23	5.61 ± 0.27	6.09 ± 0.3
29	4.53 ± 0.2	5.13 ± 0.24	5.87 ± 0.29	6.61 ± 0.34	7.21 ± 0.39
30	5.24 ± 0.24	6.00 ± 0.3	6.93 ± 0.36	7.86 ± 0.43	8.62 ± 0.48
31	6.08 ± 0.27	7.02 ± 0.34	8.19 ± 0.41	9.35 ± 0.49	10.30 ± 0.55
32	7.03 ± 0.32	8.19 ± 0.38	9.61 ± 0.46	11.03 ± 0.54	12.19 ± 0.61
33	8.07 ± 0.32	9.44 ± 0.39	11.13 ± 0.47	12.81 ± 0.55	14.18 ± 0.61
34	9.11 ± 0.31	10.69 ± 0.38	12.63 ± 0.46	14.58 ± 0.54	16.16 ± 0.61
35	10.08 ± 0.29	11.89 ± 0.36	14.11 ± 0.45	16.33 ± 0.54	18.14 ± 0.62
36	11.00 ± 0.28	13.06 ± 0.36	15.59 ± 0.46	18.11 ± 0.55	20.17 ± 0.63
37	11.92 ± 0.28	14.23 ± 0.36	17.07 ± 0.46	19.91 ± 0.55	22.23 ± 0.63
38	12.79 ± 0.26	15.37 ± 0.34	18.53 ± 0.44	21.69 ± 0.55	24.27 ± 0.63
39	13.43 ± 0.15	16.23 ± 0.2	19.66 ± 0.26	23.09 ± 0.33	25.88 ± 0.38

^aData are mean ± SD.**On-line Table 5: REBV percentile values per gestational week^a**

Week	3rd Percentile (mL)	15th Percentile (mL)	50th Percentile (mL)	85th Percentile (mL)	97th Percentile (mL)
26	0.73 ± 0.019	0.915 ± 0.018	1.142 ± 0.017	1.369 ± 0.015	1.554 ± 0.014
27	0.811 ± 0.032	0.992 ± 0.03	1.213 ± 0.028	1.435 ± 0.026	1.616 ± 0.025
28	0.916 ± 0.033	1.092 ± 0.032	1.308 ± 0.03	1.523 ± 0.029	1.699 ± 0.027
29	1.032 ± 0.039	1.204 ± 0.038	1.415 ± 0.036	1.626 ± 0.035	1.798 ± 0.034
30	1.167 ± 0.043	1.335 ± 0.042	1.542 ± 0.04	1.748 ± 0.039	1.917 ± 0.038
31	1.294 ± 0.035	1.46 ± 0.034	1.663 ± 0.033	1.866 ± 0.032	2.031 ± 0.031
32	1.387 ± 0.022	1.55 ± 0.022	1.751 ± 0.021	1.952 ± 0.021	2.116 ± 0.021
33	1.445 ± 0.016	1.609 ± 0.016	1.81 ± 0.016	2.01 ± 0.017	2.174 ± 0.017
34	1.501 ± 0.02	1.666 ± 0.021	1.869 ± 0.021	2.072 ± 0.023	2.237 ± 0.023
35	1.576 ± 0.026	1.744 ± 0.027	1.951 ± 0.029	2.157 ± 0.03	2.325 ± 0.031
36	1.677 ± 0.037	1.849 ± 0.038	2.059 ± 0.04	2.27 ± 0.041	2.442 ± 0.042
37	1.82 ± 0.051	1.996 ± 0.052	2.21 ± 0.053	2.425 ± 0.054	2.601 ± 0.056
38	2 ± 0.059	2.178 ± 0.06	2.397 ± 0.061	2.616 ± 0.062	2.794 ± 0.063
39	2.154 ± 0.037	2.335 ± 0.037	2.556 ± 0.038	2.778 ± 0.039	2.959 ± 0.04

^aData are mean ± SD.**On-line Table 6: LEBV percentile values per gestational week^a**

Week	3rd Percentile (mL)	15th Percentile (mL)	50th Percentile (mL)	85th Percentile (mL)	97th Percentile (mL)
26	0.649 ± 0.02	0.857 ± 0.018	1.113 ± 0.016	1.37 ± 0.013	1.578 ± 0.011
27	0.736 ± 0.035	0.937 ± 0.032	1.182 ± 0.028	1.428 ± 0.024	1.629 ± 0.021
28	0.857 ± 0.04	1.047 ± 0.037	1.281 ± 0.033	1.514 ± 0.03	1.704 ± 0.027
29	1.002 ± 0.049	1.182 ± 0.046	1.404 ± 0.042	1.626 ± 0.039	1.806 ± 0.036
30	1.173 ± 0.055	1.344 ± 0.052	1.555 ± 0.049	1.765 ± 0.045	1.936 ± 0.042
31	1.341 ± 0.046	1.503 ± 0.044	1.702 ± 0.041	1.901 ± 0.037	2.064 ± 0.035
32	1.458 ± 0.026	1.612 ± 0.023	1.801 ± 0.02	1.99 ± 0.018	2.145 ± 0.015
33	1.515 ± 0.012	1.662 ± 0.01	1.843 ± 0.008	2.024 ± 0.006	2.172 ± 0.005
34	1.55 ± 0.013	1.694 ± 0.012	1.87 ± 0.01	2.046 ± 0.009	2.19 ± 0.008
35	1.601 ± 0.019	1.742 ± 0.018	1.915 ± 0.018	2.089 ± 0.016	2.23 ± 0.016
36	1.671 ± 0.025	1.811 ± 0.024	1.982 ± 0.024	2.153 ± 0.023	2.293 ± 0.023
37	1.764 ± 0.033	1.903 ± 0.032	2.073 ± 0.032	2.242 ± 0.032	2.381 ± 0.031
38	1.882 ± 0.039	2.02 ± 0.039	2.188 ± 0.039	2.357 ± 0.039	2.495 ± 0.038
39	1.985 ± 0.025	2.122 ± 0.025	2.291 ± 0.025	2.459 ± 0.025	2.597 ± 0.025

^aData are mean ± SD.

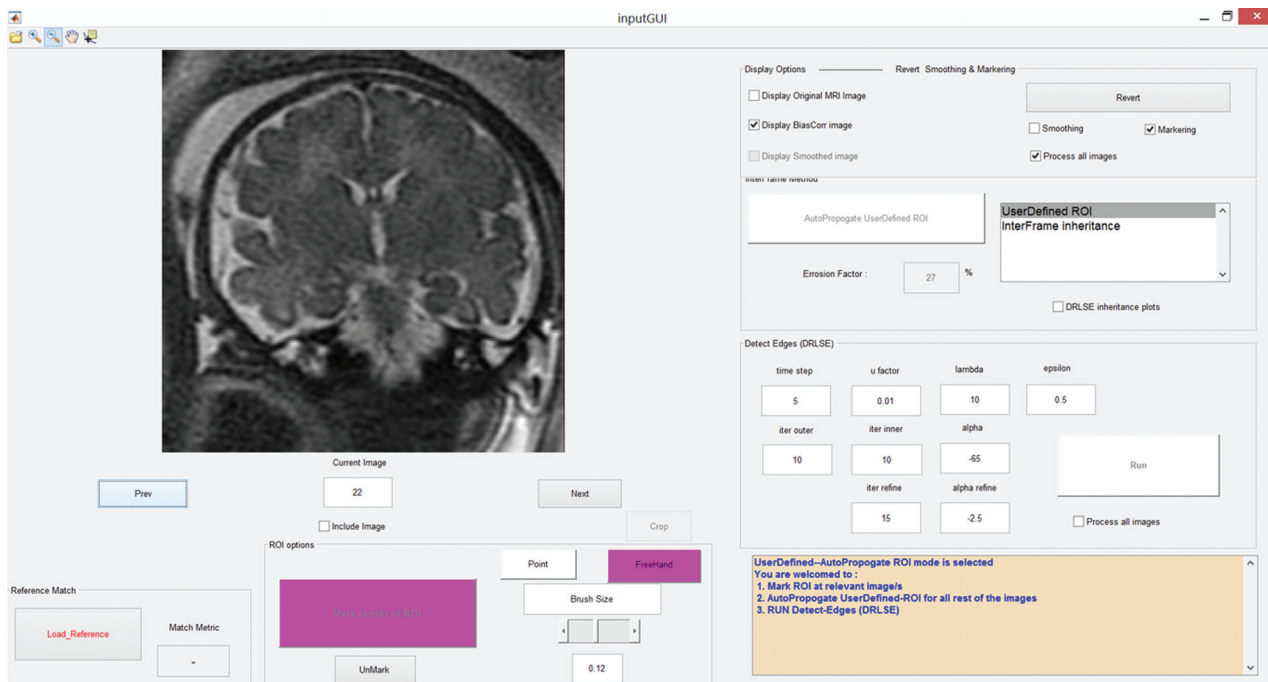
On-line Table 7: CV/STV ratio percentile values per gestational week^a

Week	3rd Percentile (mL)	15th Percentile (mL)	50th Percentile (mL)	85th Percentile (mL)	97th Percentile (mL)
26	0.03053 ± 0.00032	0.03437 ± 0.00036	0.03907 ± 0.00042	0.04378 ± 0.00047	0.04761 ± 0.00052
27	0.03181 ± 0.00045	0.03583 ± 0.00052	0.04077 ± 0.00062	0.04571 ± 0.00071	0.04974 ± 0.00078
28	0.03318 ± 0.00042	0.03744 ± 0.0005	0.04268 ± 0.00059	0.04791 ± 0.00068	0.05218 ± 0.00075
29	0.0346 ± 0.00043	0.0391 ± 0.0005	0.04463 ± 0.00059	0.05015 ± 0.00068	0.05466 ± 0.00076
30	0.03579 ± 0.0003	0.04053 ± 0.00038	0.04636 ± 0.00048	0.05218 ± 0.00057	0.05693 ± 0.00065
31	0.03677 ± 0.00034	0.04177 ± 0.00042	0.04791 ± 0.00052	0.05405 ± 0.00061	0.05905 ± 0.0007
32	0.0383 ± 0.00064	0.04355 ± 0.00071	0.05 ± 0.0008	0.05645 ± 0.00089	0.0617 ± 0.00096
33	0.04087 ± 0.00092	0.04633 ± 0.00097	0.05302 ± 0.00103	0.05971 ± 0.0011	0.06517 ± 0.00115
34	0.04392 ± 0.00092	0.04949 ± 0.00094	0.05633 ± 0.00096	0.06317 ± 0.00099	0.06874 ± 0.00101
35	0.04659 ± 0.00073	0.05215 ± 0.0007	0.05898 ± 0.00067	0.06581 ± 0.00063	0.07138 ± 0.00061
36	0.04873 ± 0.00063	0.05412 ± 0.00055	0.06074 ± 0.00046	0.06736 ± 0.00036	0.07275 ± 0.00029
37	0.05092 ± 0.00072	0.05599 ± 0.00061	0.06223 ± 0.00047	0.06846 ± 0.00033	0.07354 ± 0.00021
38	0.05331 ± 0.00075	0.058 ± 0.00063	0.06376 ± 0.00048	0.06952 ± 0.00033	0.07421 ± 0.00021
39	0.05524 ± 0.00045	0.05962 ± 0.00038	0.06501 ± 0.0003	0.07039 ± 0.00021	0.07477 ± 0.00014

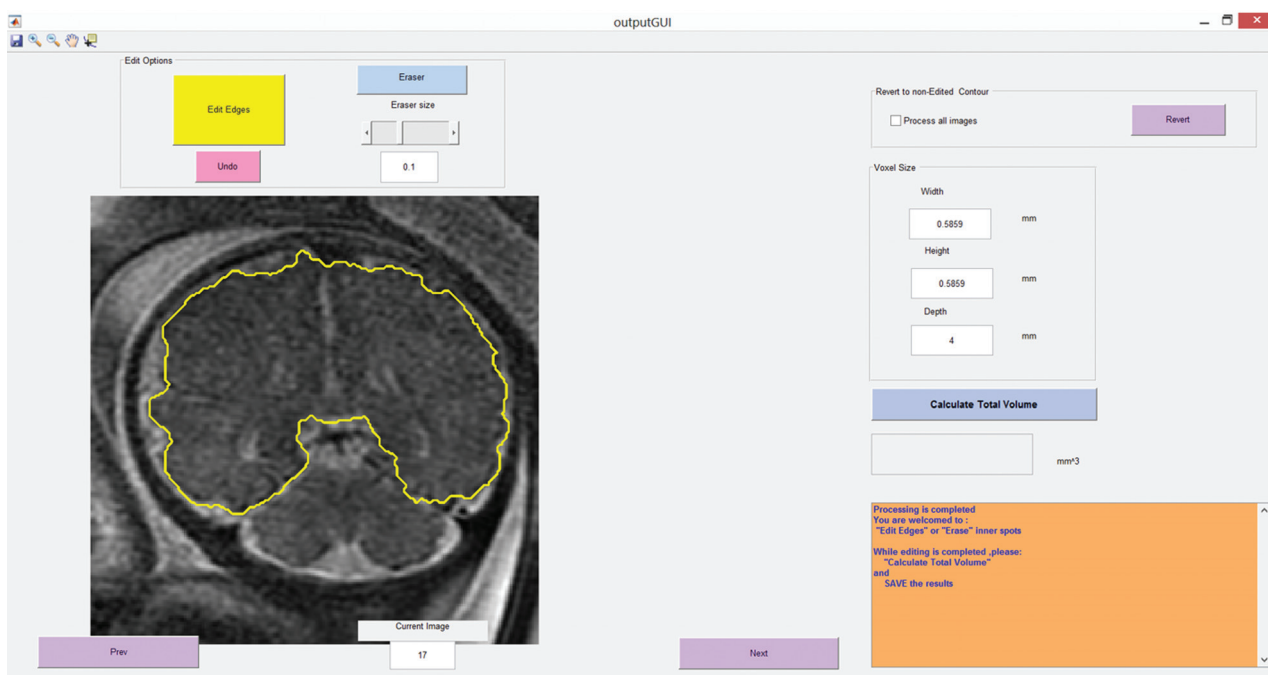
^aData are mean ± SD.**On-line Table 8: EBV/STV ratio percentile values per gestational week^a**

Week	3rd Percentile (mL)	15th Percentile (mL)	50th Percentile (mL)	85th Percentile (mL)	97th Percentile (mL)
26	0.01634 ± 0.00009	0.01962 ± 0.00012	0.02364 ± 0.00015	0.02766 ± 0.00019	0.03093 ± 0.00022
27	0.01596 ± 0.00015	0.01911 ± 0.0002	0.02297 ± 0.00026	0.02684 ± 0.00033	0.02998 ± 0.00038
28	0.01548 ± 0.00014	0.01846 ± 0.00019	0.02212 ± 0.00026	0.02578 ± 0.00032	0.02876 ± 0.00038
29	0.01509 ± 0.00011	0.0179 ± 0.00016	0.02134 ± 0.00023	0.02478 ± 0.0003	0.02758 ± 0.00036
30	0.01474 ± 0.00012	0.01736 ± 0.00018	0.02058 ± 0.00025	0.02379 ± 0.00032	0.02641 ± 0.00038
31	0.01429 ± 0.00017	0.01671 ± 0.00023	0.01969 ± 0.0003	0.02267 ± 0.00037	0.0251 ± 0.00043
32	0.01368 ± 0.0002	0.01591 ± 0.00026	0.01865 ± 0.00034	0.02139 ± 0.00041	0.02363 ± 0.00047
33	0.01311 ± 0.00013	0.01515 ± 0.00019	0.01766 ± 0.00026	0.02016 ± 0.00034	0.0222 ± 0.00039
34	0.01284 ± 0.00005	0.01469 ± 0.0001	0.01697 ± 0.00017	0.01925 ± 0.00023	0.0211 ± 0.00029
35	0.01267 ± 0.00008	0.01436 ± 0.00012	0.01644 ± 0.00018	0.01852 ± 0.00024	0.02021 ± 0.00028
36	0.01234 ± 0.00011	0.01389 ± 0.00014	0.0158 ± 0.00019	0.01771 ± 0.00024	0.01926 ± 0.00028
37	0.01224 ± 0.00008	0.01368 ± 0.00005	0.01545 ± 0.00003	0.01723 ± 0.00005	0.01867 ± 0.00007
38	0.01282 ± 0.00029	0.01417 ± 0.00026	0.01583 ± 0.00023	0.0175 ± 0.0002	0.01885 ± 0.00017
39	0.01368 ± 0.00023	0.01497 ± 0.00022	0.01656 ± 0.0002	0.01814 ± 0.00018	0.01944 ± 0.00017

^aData are mean ± SD.

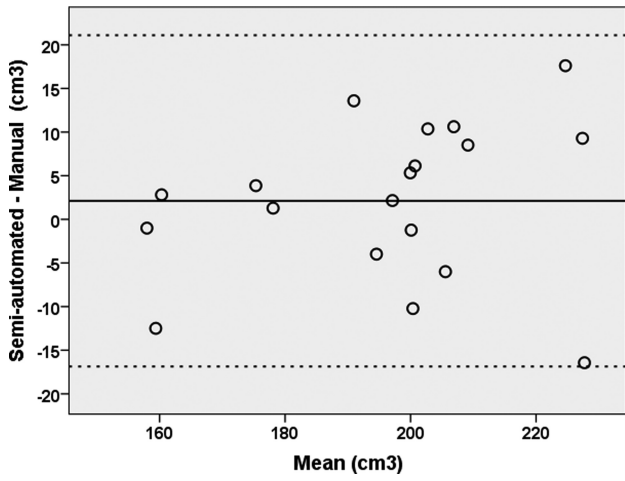


A



B

ON-LINE FIG 1. Screenshots of the semiautomated method interface. A, User interface for marking ROIs per section. B, User interface for small edge corrections and volume calculation.



ON-LINE FIG 2. The difference between manual and semiautomated measurements presented on a Bland-Altman plot.