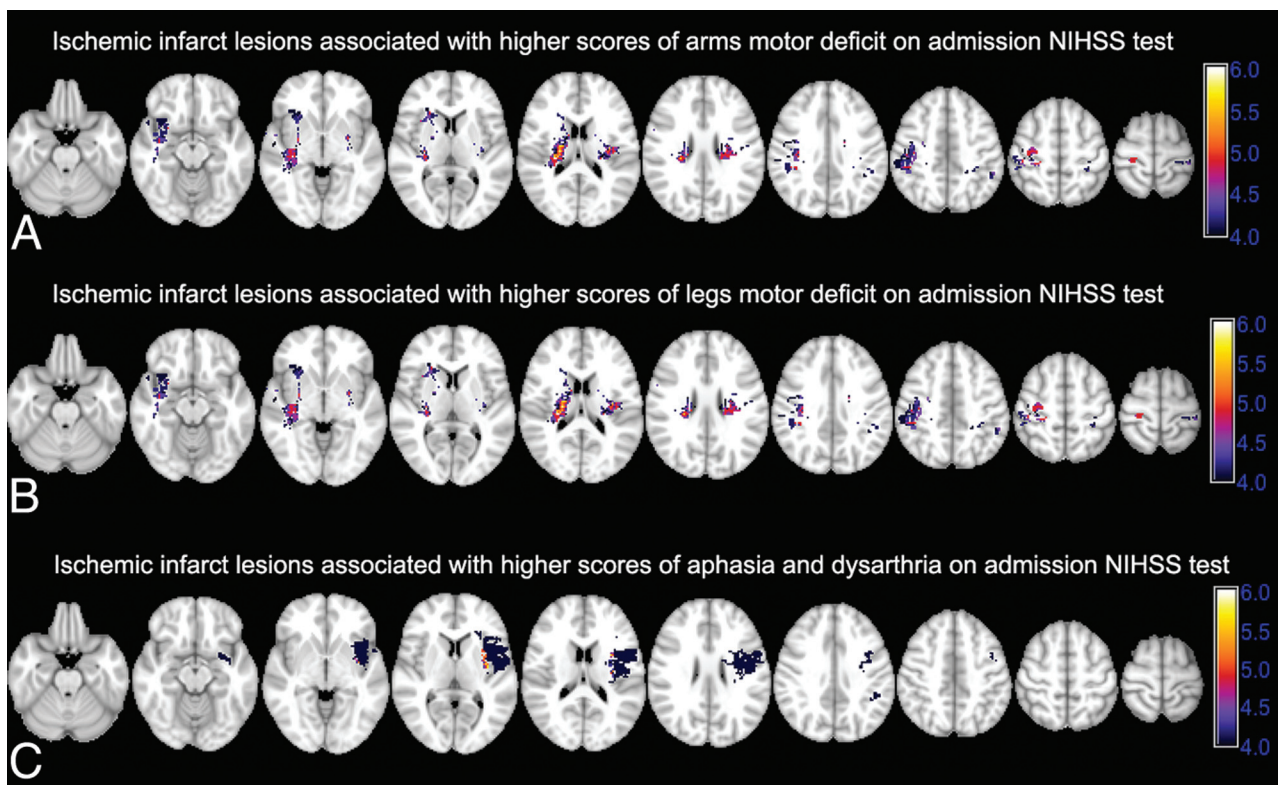


**ON-LINE FIG 1.** A, Summation map of the admission DWI infarct lesions among all 238 patients. Each voxel value represents the total number of patients with infarction at that particular voxel coordinate. B, Overlay summation map of voxels with >10 infarct lesions in the patient cohort included in voxel-based analyses.



**ON-LINE FIG 2.** Voxel-based analysis of infarct lesions associated with worse paresis and language deficits at the time of admission. The color range shows z scores with corresponding *P* value thresholds after family-wise error Bonferroni correction for multiple comparisons and application of 2000 permutations. A, Infarct lesions associated with higher scores on arm motor deficits (question 5) on the admission NIHSS test: z score = 3.9 → *P* value = .05; z score = 4.5 → *P* value = .01. B, Infarct lesions associated with higher scores on leg motor deficits (question 6) on the admission NIHSS test: z score = 3.9 → *P* value = .05; z score = 4.2 → *P* value = .01. C, Infarct lesions associated with higher scores on aphasia and dysarthria (questions 9 and 10) on the admission NIHSS test: z score = 4.2 → *P* value = .05; z score = 4.9 → *P* value = .01.