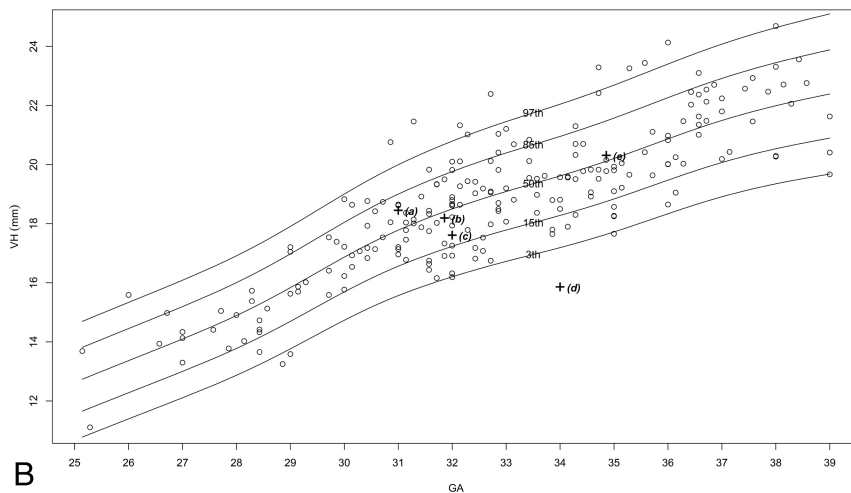
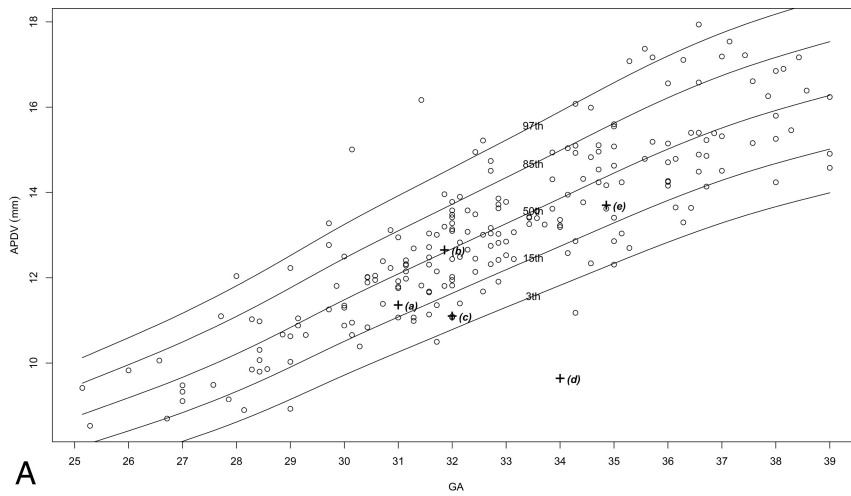
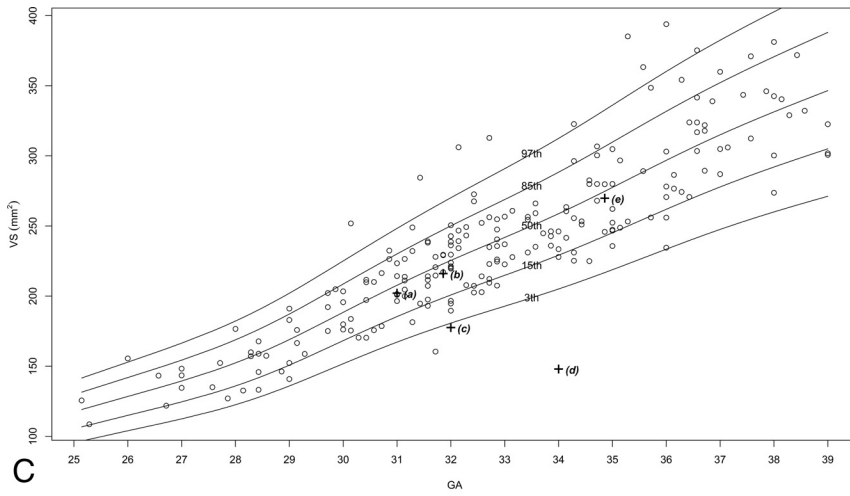


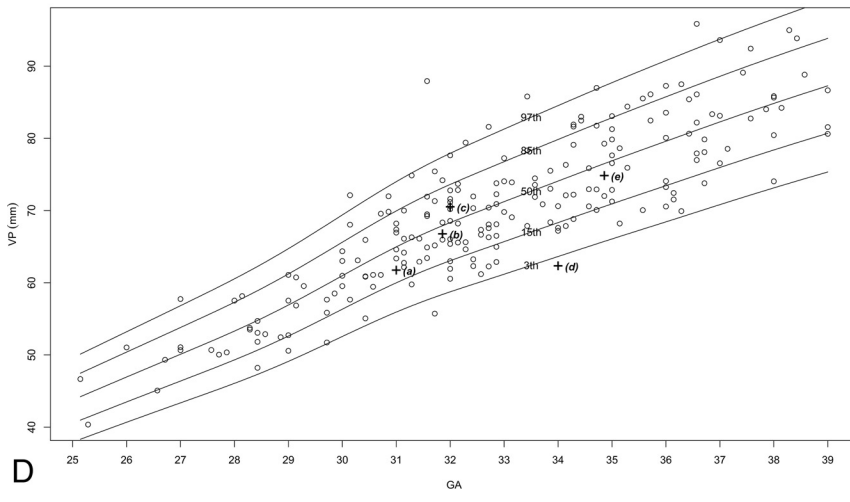
ON-LINE FIG 1. Distribution of the number of fetuses examined by gestational week.



ON-LINE FIG 2. Percentile curves for previously reported parameters. A, Anteroposterior diameter of the vermis. B, Vermian height.

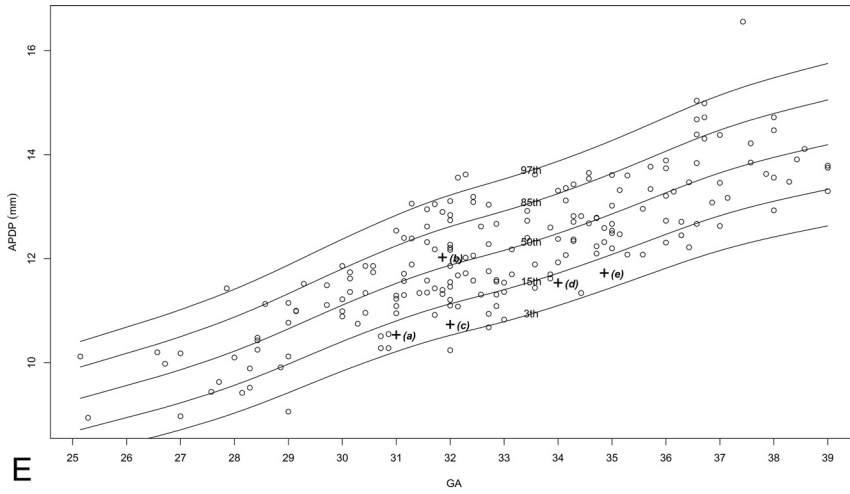


C

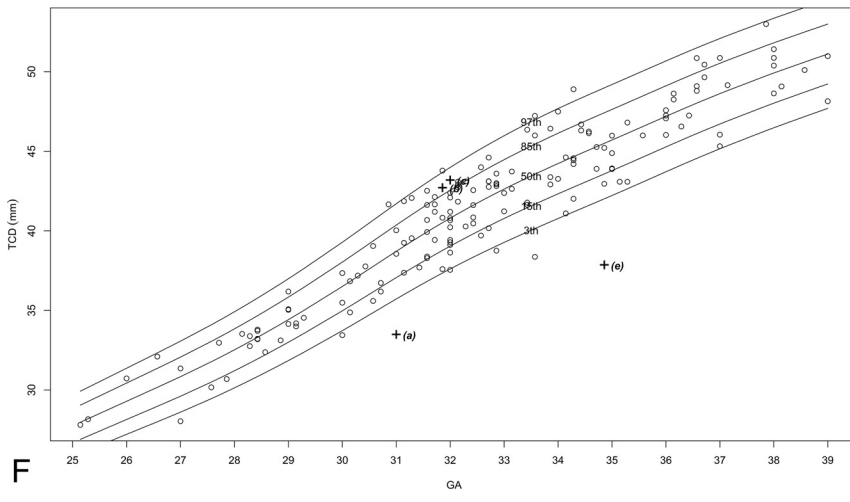


D

ON-LINE FIG 2. Continued. *C*, Vermian cross-sectional area. *D*, Vermian perimeter.

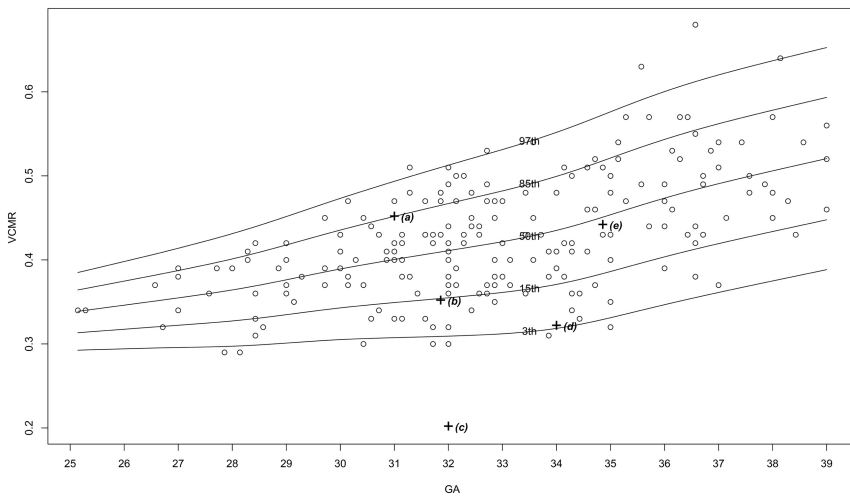


E



F

ON-LINE FIG 2. Continued. *E*, Pontine anteroposterior diameter. *F*, Transcerebellar diameter.



ON-LINE FIG 3. Percentile curves for vermiformis-to-cisterna magna ratio.

On-line Table 1: Examination indications and findings

	No.	Percentage of Cohort
Indication		
Mild lateral ventricular asymmetry and/or ventriculomegaly on ultrasound examination	60	28
Suspected anomaly on ultrasound examination	53	25
Maternal CMV infection	52	24
Extracranial anomalies on ultrasound examination	22	10
Genetic disorder	6	3
Disorders in the family or in previous pregnancies	22	10
Finding		
No brain abnormalities	171	80
Mild lateral ventricular asymmetry and/or ventriculomegaly	44	20

Note:—CMV indicates cytomegalovirus.

On-line Table 2: Number of examination images selected for measurement per structure

Structure	No.
Anteroposterior diameter of the vermis	211
Vermian height	211
Vermian cross-sectional area	211
Vermian perimeter	211
Vermian anterior lobe cross-sectional area	200
Vermian posterior lobe cross-sectional area	200
Anteroposterior diameter of the pons	191
Pontine height	191
Pontine cross-sectional area	190
Brain stem cross-sectional area	179
Cisterna magna cross-sectional area	203
Transcerebellar diameter	155
Cerebellar cross-sectional area	155
Cerebellar perimeter	155
Cerebellar hemispheres	151

On-line Table 3: Normal percentiles for anteroposterior diameter of the vermis

Gestational Week	3rd Percentile (mm)	15th Percentile (mm)	50th Percentile (mm)	85th Percentile (mm)	97th Percentile (mm)
26	7.86 ± 0.07	8.5 ± 0.08	9.29 ± 0.09	10.07 ± 0.1	10.71 ± 0.1
27	8.17 ± 0.13	8.84 ± 0.14	9.67 ± 0.16	10.5 ± 0.18	11.17 ± 0.19
28	8.62 ± 0.15	9.34 ± 0.16	10.22 ± 0.18	11.1 ± 0.2	11.81 ± 0.21
29	9.15 ± 0.17	9.91 ± 0.19	10.84 ± 0.2	11.77 ± 0.21	12.52 ± 0.23
30	9.72 ± 0.17	10.51 ± 0.18	11.48 ± 0.19	12.45 ± 0.21	13.25 ± 0.22
31	10.26 ± 0.16	11.08 ± 0.17	12.09 ± 0.18	13.1 ± 0.19	13.92 ± 0.2
32	10.79 ± 0.16	11.64 ± 0.17	12.68 ± 0.18	13.72 ± 0.19	14.58 ± 0.2
33	11.31 ± 0.16	12.19 ± 0.17	13.27 ± 0.18	14.35 ± 0.19	15.23 ± 0.2
34	11.82 ± 0.16	12.74 ± 0.17	13.86 ± 0.18	14.98 ± 0.2	15.9 ± 0.21
35	12.34 ± 0.16	13.29 ± 0.17	14.45 ± 0.18	15.62 ± 0.19	16.57 ± 0.2
36	12.83 ± 0.15	13.81 ± 0.15	15.01 ± 0.16	16.22 ± 0.17	17.2 ± 0.18
37	13.28 ± 0.13	14.28 ± 0.13	15.51 ± 0.14	16.74 ± 0.15	17.73 ± 0.15
38	13.66 ± 0.11	14.68 ± 0.11	15.92 ± 0.12	17.17 ± 0.12	18.18 ± 0.12
39	13.92 ± 0.06	14.95 ± 0.06	16.2 ± 0.06	17.46 ± 0.07	18.48 ± 0.07

On-line Table 4: Normal percentiles for vermian height

Gestational Week	3rd Percentile (mm)	15th Percentile (mm)	50th Percentile (mm)	85th Percentile (mm)	97th Percentile (mm)
26	11.55 ± 0.13	12.43 ± 0.13	13.52 ± 0.13	14.61 ± 0.14	15.5 ± 0.14
27	12.11 ± 0.22	13 ± 0.23	14.1 ± 0.23	15.2 ± 0.24	16.09 ± 0.24
28	12.88 ± 0.25	13.78 ± 0.26	14.9 ± 0.27	16.01 ± 0.27	16.92 ± 0.28
29	13.77 ± 0.29	14.7 ± 0.3	15.84 ± 0.31	16.98 ± 0.32	17.91 ± 0.33
30	14.73 ± 0.29	15.68 ± 0.3	16.86 ± 0.31	18.04 ± 0.32	19 ± 0.33
31	15.56 ± 0.22	16.55 ± 0.24	17.77 ± 0.25	18.99 ± 0.26	19.99 ± 0.27
32	16.2 ± 0.18	17.23 ± 0.19	18.49 ± 0.2	19.76 ± 0.21	20.79 ± 0.22
33	16.72 ± 0.15	17.78 ± 0.16	19.09 ± 0.17	20.39 ± 0.18	21.45 ± 0.19
34	17.19 ± 0.15	18.28 ± 0.16	19.62 ± 0.17	20.96 ± 0.18	22.04 ± 0.19
35	17.73 ± 0.18	18.84 ± 0.19	20.21 ± 0.2	21.58 ± 0.21	22.69 ± 0.21
36	18.33 ± 0.19	19.47 ± 0.2	20.87 ± 0.2	22.26 ± 0.21	23.4 ± 0.22
37	18.9 ± 0.16	20.06 ± 0.16	21.49 ± 0.17	22.91 ± 0.18	24.07 ± 0.19
38	19.34 ± 0.12	20.53 ± 0.12	21.99 ± 0.14	23.44 ± 0.15	24.63 ± 0.16
39	19.61 ± 0.06	20.82 ± 0.06	22.31 ± 0.07	23.79 ± 0.08	25 ± 0.08

On-line Table 5: Normal percentiles for VS

Gestational Week	3rd Percentile (mm ²)	15th Percentile (mm ²)	50th Percentile (mm ²)	85th Percentile (mm ²)	97th Percentile (mm ²)
26	105.76 ± 1.54	116.98 ± 1.75	130.75 ± 2	144.52 ± 2.25	155.74 ± 2.45
27	112.54 ± 2.8	124.67 ± 3.18	139.56 ± 3.64	154.45 ± 4.09	166.57 ± 4.47
28	122.67 ± 3.58	136.07 ± 4	152.53 ± 4.52	168.98 ± 5.03	182.39 ± 5.45
29	136.03 ± 4.63	150.88 ± 5.1	169.11 ± 5.68	187.33 ± 6.26	202.18 ± 6.73
30	151.74 ± 4.92	168.2 ± 5.44	188.4 ± 6.08	208.59 ± 6.71	225.05 ± 7.23
31	167.09 ± 4.49	185.29 ± 5.05	207.64 ± 5.74	229.99 ± 6.43	248.2 ± 6.99
32	180.65 ± 3.91	200.73 ± 4.5	225.37 ± 5.22	250 ± 5.94	270.08 ± 6.53
33	192.8 ± 3.67	214.82 ± 4.29	241.85 ± 5.05	268.89 ± 5.81	290.91 ± 6.42
34	205.12 ± 4	229.23 ± 4.67	258.83 ± 5.49	288.43 ± 6.32	312.54 ± 6.99
35	218.84 ± 4.44	245.16 ± 5.12	277.48 ± 5.96	309.8 ± 6.8	336.12 ± 7.48
36	233.41 ± 4.5	261.84 ± 5.11	296.74 ± 5.85	331.64 ± 6.59	360.07 ± 7.2
37	247.45 ± 4.11	277.73 ± 4.65	314.9 ± 5.32	352.07 ± 5.99	382.34 ± 6.53
38	259.94 ± 3.62	291.97 ± 4.16	331.28 ± 4.82	370.6 ± 5.48	402.63 ± 6.03
39	268.83 ± 2.02	302.26 ± 2.36	343.29 ± 2.77	384.32 ± 3.18	417.75 ± 3.51

On-line Table 6: Normal percentiles for VP

Gestational Week	3rd Percentile (mm)	15th Percentile (mm)	50th Percentile (mm)	85th Percentile (mm)	97th Percentile (mm)
26	41.25 ± 0.5	44.11 ± 0.53	47.62 ± 0.58	51.12 ± 0.63	53.98 ± 0.67
27	43.36 ± 0.82	46.38 ± 0.89	50.09 ± 0.97	53.8 ± 1.06	56.82 ± 1.12
28	46.08 ± 0.87	49.33 ± 0.95	53.32 ± 1.04	57.31 ± 1.13	60.56 ± 1.2
29	49.13 ± 1.01	52.63 ± 1.1	56.93 ± 1.2	61.24 ± 1.3	64.74 ± 1.38
30	52.55 ± 1.08	56.33 ± 1.17	60.97 ± 1.27	65.61 ± 1.38	69.39 ± 1.46
31	55.91 ± 0.97	59.96 ± 1.05	64.94 ± 1.15	69.91 ± 1.25	73.97 ± 1.34
32	58.73 ± 0.78	63.03 ± 0.85	68.31 ± 0.94	73.59 ± 1.02	77.9 ± 1.09
33	61.18 ± 0.75	65.69 ± 0.81	71.23 ± 0.89	76.77 ± 0.96	81.28 ± 1.02
34	63.63 ± 0.76	68.32 ± 0.81	74.08 ± 0.88	79.84 ± 0.94	84.53 ± 0.99
35	66.06 ± 0.74	70.92 ± 0.79	76.89 ± 0.85	82.85 ± 0.91	87.71 ± 0.96
36	68.43 ± 0.73	73.45 ± 0.77	79.6 ± 0.83	85.75 ± 0.88	90.76 ± 0.93
37	70.81 ± 0.73	75.96 ± 0.77	82.27 ± 0.81	88.58 ± 0.86	93.72 ± 0.89
38	73.13 ± 0.7	78.38 ± 0.73	84.83 ± 0.77	91.28 ± 0.81	96.53 ± 0.84
39	74.87 ± 0.4	80.21 ± 0.42	86.76 ± 0.44	93.3 ± 0.47	98.64 ± 0.49

On-line Table 7: Normal percentiles for pontine anteroposterior diameter

Gestational Week	3rd Percentile (mm)	15th Percentile (mm)	50th Percentile (mm)	85th Percentile (mm)	97th Percentile (mm)
26	8.49 ± 0.05	9 ± 0.05	9.62 ± 0.05	10.25 ± 0.06	10.75 ± 0.06
27	8.71 ± 0.09	9.23 ± 0.1	9.87 ± 0.1	10.5 ± 0.11	11.02 ± 0.11
28	9.03 ± 0.11	9.57 ± 0.12	10.22 ± 0.12	10.88 ± 0.13	11.42 ± 0.13
29	9.42 ± 0.13	9.97 ± 0.13	10.65 ± 0.14	11.33 ± 0.15	11.88 ± 0.15
30	9.84 ± 0.12	10.4 ± 0.13	11.1 ± 0.14	11.8 ± 0.14	12.37 ± 0.15
31	10.21 ± 0.11	10.8 ± 0.11	11.52 ± 0.12	12.24 ± 0.13	12.83 ± 0.13
32	10.52 ± 0.08	11.13 ± 0.09	11.87 ± 0.09	12.61 ± 0.1	13.22 ± 0.1
33	10.79 ± 0.09	11.41 ± 0.09	12.16 ± 0.09	12.92 ± 0.09	13.53 ± 0.1
34	11.1 ± 0.1	11.72 ± 0.11	12.49 ± 0.11	13.25 ± 0.11	13.88 ± 0.11
35	11.45 ± 0.11	12.08 ± 0.12	12.86 ± 0.12	13.64 ± 0.13	14.28 ± 0.13
36	11.82 ± 0.11	12.47 ± 0.12	13.27 ± 0.13	14.07 ± 0.13	14.72 ± 0.14
37	12.15 ± 0.09	12.82 ± 0.1	13.65 ± 0.11	14.47 ± 0.11	15.14 ± 0.12
38	12.42 ± 0.07	13.1 ± 0.08	13.95 ± 0.08	14.79 ± 0.09	15.48 ± 0.09
39	12.59 ± 0.04	13.28 ± 0.04	14.14 ± 0.04	15 ± 0.05	15.7 ± 0.05

On-line Table 8: Normal percentiles for TCD

Gestational Week	3rd Percentile (mm)	15th Percentile (mm)	50th Percentile (mm)	85th Percentile (mm)	97th Percentile (mm)
26	27.51 ± 0.25	28.46 ± 0.27	29.62 ± 0.28	30.78 ± 0.3	31.73 ± 0.31
27	28.62 ± 0.45	29.62 ± 0.47	30.85 ± 0.49	32.08 ± 0.52	33.08 ± 0.54
28	30.14 ± 0.5	31.21 ± 0.52	32.53 ± 0.55	33.85 ± 0.58	34.92 ± 0.6
29	31.86 ± 0.56	33.01 ± 0.58	34.43 ± 0.62	35.85 ± 0.65	37 ± 0.68
30	33.74 ± 0.6	34.98 ± 0.63	36.52 ± 0.66	38.05 ± 0.7	39.29 ± 0.73
31	35.71 ± 0.61	37.06 ± 0.64	38.71 ± 0.67	40.36 ± 0.71	41.7 ± 0.74
32	37.6 ± 0.55	39.03 ± 0.57	40.79 ± 0.6	42.54 ± 0.64	43.98 ± 0.66
33	39.27 ± 0.48	40.77 ± 0.5	42.62 ± 0.53	44.46 ± 0.55	45.97 ± 0.57
34	40.77 ± 0.45	42.32 ± 0.46	44.22 ± 0.47	46.13 ± 0.48	47.68 ± 0.49
35	42.22 ± 0.45	43.79 ± 0.45	45.71 ± 0.45	47.63 ± 0.46	49.2 ± 0.46
36	43.71 ± 0.46	45.27 ± 0.46	47.19 ± 0.46	49.11 ± 0.45	50.67 ± 0.45
37	45.15 ± 0.42	46.71 ± 0.42	48.61 ± 0.42	50.52 ± 0.41	52.08 ± 0.41
38	46.47 ± 0.39	48.02 ± 0.39	49.91 ± 0.38	51.81 ± 0.38	53.35 ± 0.38
39	47.44 ± 0.22	48.97 ± 0.22	50.86 ± 0.22	52.75 ± 0.22	54.28 ± 0.21

On-line Table 9: Normal percentiles for vermian anterior lobe cross-sectional area

Gestational Week	3rd Percentile (mm ²)	15th Percentile (mm ²)	50th Percentile (mm ²)	85th Percentile (mm ²)	97th Percentile (mm ²)
26	36.96 ± 0.45	42.15 ± 0.55	48.52 ± 0.68	54.89 ± 0.81	60.07 ± 0.91
27	39.03 ± 0.91	44.68 ± 1.11	51.62 ± 1.35	58.56 ± 1.58	64.21 ± 1.78
28	42.5 ± 1.29	48.81 ± 1.5	56.55 ± 1.76	64.3 ± 2.02	70.61 ± 2.23
29	47.41 ± 1.73	54.42 ± 1.95	63.02 ± 2.22	71.63 ± 2.49	78.64 ± 2.71
30	53.4 ± 1.92	61.14 ± 2.15	70.64 ± 2.43	80.14 ± 2.72	87.88 ± 2.95
31	59.47 ± 1.79	67.98 ± 2.03	78.42 ± 2.32	88.85 ± 2.61	97.36 ± 2.85
32	64.74 ± 1.48	74.02 ± 1.72	85.4 ± 2.01	96.79 ± 2.3	106.06 ± 2.54
33	69.26 ± 1.33	79.33 ± 1.59	91.7 ± 1.9	104.06 ± 2.21	114.13 ± 2.47
34	73.5 ± 1.3	84.44 ± 1.59	97.88 ± 1.94	111.31 ± 2.29	122.26 ± 2.57
35	77.74 ± 1.31	89.65 ± 1.62	104.28 ± 2.01	118.91 ± 2.39	130.82 ± 2.7
36	81.94 ± 1.28	94.91 ± 1.61	110.81 ± 2.02	126.72 ± 2.43	139.69 ± 2.76
37	85.97 ± 1.18	100.04 ± 1.53	117.31 ± 1.97	134.58 ± 2.4	148.65 ± 2.76
38	89.48 ± 0.98	104.73 ± 1.36	123.46 ± 1.82	142.18 ± 2.29	157.43 ± 2.66
39	91.82 ± 0.51	108.06 ± 0.75	127.99 ± 1.04	147.93 ± 1.34	164.17 ± 1.58

On-line Table 10: Normal percentiles for vermian posterior lobe cross-sectional area

Gestational Week	3rd Percentile (mm ²)	15th Percentile (mm ²)	50th Percentile (mm ²)	85th Percentile (mm ²)	97th Percentile (mm ²)
26	62.03 ± 0.72	68.38 ± 0.91	76.18 ± 1.14	83.98 ± 1.36	90.34 ± 1.55
27	65.26 ± 1.36	72.45 ± 1.72	81.29 ± 2.17	90.13 ± 2.61	97.32 ± 2.97
28	70.25 ± 1.81	78.71 ± 2.22	89.09 ± 2.74	99.46 ± 3.25	107.92 ± 3.66
29	77.14 ± 2.43	87.04 ± 2.91	99.2 ± 3.49	111.35 ± 4.08	121.26 ± 4.56
30	85.48 ± 2.63	97.02 ± 3.16	111.19 ± 3.81	125.35 ± 4.46	136.89 ± 4.99
31	93.55 ± 2.29	106.87 ± 2.86	123.23 ± 3.56	139.58 ± 4.25	152.91 ± 4.82
32	100.45 ± 2.02	115.62 ± 2.59	134.24 ± 3.28	152.86 ± 3.98	168.04 ± 4.54
33	107.08 ± 2.13	124 ± 2.64	144.77 ± 3.26	165.54 ± 3.88	182.46 ± 4.39
34	114.7 ± 2.62	133.15 ± 3.06	155.8 ± 3.59	178.45 ± 4.13	196.9 ± 4.56
35	124.19 ± 3.22	143.88 ± 3.54	168.05 ± 3.93	192.22 ± 4.32	211.91 ± 4.64
36	135.2 ± 3.53	155.67 ± 3.7	180.8 ± 3.9	205.93 ± 4.1	226.4 ± 4.27
37	146.58 ± 3.43	167.41 ± 3.5	192.98 ± 3.58	218.54 ± 3.66	239.37 ± 3.72
38	157.26 ± 3.17	178.23 ± 3.2	203.98 ± 3.24	229.73 ± 3.28	250.71 ± 3.31
39	165.17 ± 1.83	186.22 ± 1.84	212.07 ± 1.86	237.91 ± 1.88	258.96 ± 1.9

On-line Table 11: Normal percentiles for pontine height

Gestational Week	3rd Percentile (mm)	15th Percentile (mm)	50th Percentile (mm)	85th Percentile (mm)	97th Percentile (mm)
26	9.72 ± 0.04	10.34 ± 0.04	11.1 ± 0.05	11.87 ± 0.06	12.49 ± 0.06
27	9.87 ± 0.06	10.52 ± 0.07	11.32 ± 0.08	12.11 ± 0.09	12.76 ± 0.1
28	10.08 ± 0.07	10.76 ± 0.08	11.59 ± 0.09	12.42 ± 0.1	13.1 ± 0.11
29	10.33 ± 0.09	11.04 ± 0.1	11.91 ± 0.11	12.78 ± 0.12	13.48 ± 0.13
30	10.64 ± 0.1	11.38 ± 0.11	12.27 ± 0.11	13.17 ± 0.12	13.91 ± 0.13
31	10.94 ± 0.08	11.69 ± 0.09	12.61 ± 0.09	13.53 ± 0.09	14.28 ± 0.1
32	11.18 ± 0.07	11.93 ± 0.07	12.86 ± 0.07	13.78 ± 0.07	14.54 ± 0.06
33	11.41 ± 0.07	12.15 ± 0.07	13.06 ± 0.06	13.97 ± 0.05	14.71 ± 0.05
34	11.67 ± 0.09	12.39 ± 0.08	13.27 ± 0.07	14.15 ± 0.06	14.86 ± 0.05
35	12 ± 0.11	12.69 ± 0.11	13.53 ± 0.09	14.38 ± 0.08	15.07 ± 0.07
36	12.41 ± 0.14	13.07 ± 0.13	13.88 ± 0.12	14.69 ± 0.11	15.35 ± 0.1
37	12.88 ± 0.15	13.51 ± 0.14	14.29 ± 0.13	15.06 ± 0.12	15.7 ± 0.11
38	13.36 ± 0.14	13.97 ± 0.14	14.71 ± 0.13	15.46 ± 0.12	16.06 ± 0.11
39	13.72 ± 0.08	14.31 ± 0.08	15.03 ± 0.07	15.75 ± 0.07	16.34 ± 0.06

On-line Table 12: Normal percentiles for pontine cross-sectional area

Gestational Week	3rd Percentile (mm ²)	15th Percentile (mm ²)	50th Percentile (mm ²)	85th Percentile (mm ²)	97th Percentile (mm ²)
26	79.86 ± 0.87	88.19 ± 0.98	98.42 ± 1.11	108.65 ± 1.25	116.99 ± 1.36
27	83.58 ± 1.49	92.39 ± 1.68	103.22 ± 1.92	114.04 ± 2.16	122.86 ± 2.35
28	88.8 ± 1.81	98.25 ± 2.01	109.86 ± 2.26	121.47 ± 2.5	130.93 ± 2.71
29	95.4 ± 2.24	105.52 ± 2.45	117.95 ± 2.71	130.38 ± 2.97	140.51 ± 3.18
30	102.89 ± 2.31	113.68 ± 2.51	126.94 ± 2.76	140.19 ± 3	150.99 ± 3.2
31	109.95 ± 2.03	121.33 ± 2.19	135.29 ± 2.38	149.26 ± 2.56	160.63 ± 2.72
32	116.22 ± 1.89	127.98 ± 1.97	142.43 ± 2.08	156.87 ± 2.19	168.64 ± 2.27
33	122.58 ± 2.08	134.51 ± 2.1	149.16 ± 2.12	163.81 ± 2.15	175.75 ± 2.17
34	129.77 ± 2.35	141.73 ± 2.35	156.4 ± 2.34	171.08 ± 2.34	183.04 ± 2.34
35	137.77 ± 2.59	149.72 ± 2.59	164.39 ± 2.59	179.06 ± 2.6	191.01 ± 2.6
36	146.5 ± 2.78	158.47 ± 2.79	173.16 ± 2.8	187.85 ± 2.81	199.82 ± 2.82
37	155.39 ± 2.64	167.38 ± 2.64	182.09 ± 2.64	196.81 ± 2.65	208.79 ± 2.65
38	163.27 ± 2.22	175.27 ± 2.23	189.99 ± 2.23	204.71 ± 2.23	216.7 ± 2.23
39	168.64 ± 1.2	180.64 ± 1.2	195.36 ± 1.2	210.09 ± 1.2	222.08 ± 1.2

On-line Table 13: Normal percentiles for CMS

Gestational Week	3rd Percentile (mm ²)	15th Percentile (mm ²)	50th Percentile (mm ²)	85th Percentile (mm ²)	97th Percentile (mm ²)
26	314.99 ± 3.23	339.41 ± 3.86	369.39 ± 4.62	399.37 ± 5.39	423.79 ± 6.01
27	328.93 ± 5.57	356.25 ± 6.81	389.78 ± 8.33	423.31 ± 9.86	450.63 ± 11.1
28	347.6 ± 6.02	379.22 ± 7.45	418.04 ± 9.21	456.86 ± 10.97	488.48 ± 12.4
29	368.21 ± 6.77	404.8 ± 8.39	449.71 ± 10.39	494.62 ± 12.39	531.21 ± 14.01
30	391.22 ± 7.33	433.31 ± 9.08	484.97 ± 11.23	536.63 ± 13.38	578.72 ± 15.14
31	414.12 ± 6.62	461.93 ± 8.38	520.61 ± 10.54	579.29 ± 12.71	627.1 ± 14.47
32	433.56 ± 5.37	486.96 ± 7.04	552.5 ± 9.1	618.04 ± 11.16	671.44 ± 12.84
33	448.95 ± 4.14	507.59 ± 5.71	579.57 ± 7.62	651.55 ± 9.54	710.19 ± 11.1
34	460.27 ± 2.83	523.76 ± 4.24	601.69 ± 5.98	679.62 ± 7.72	743.1 ± 9.14
35	467.56 ± 1.85	535.31 ± 3.06	618.47 ± 4.55	701.63 ± 6.04	769.38 ± 7.26
36	473.89 ± 2.14	545.34 ± 3.23	633.05 ± 4.57	720.76 ± 5.91	792.21 ± 7
37	480.95 ± 2.06	555.89 ± 3.13	647.87 ± 4.44	739.86 ± 5.76	814.8 ± 6.83
38	486.45 ± 1.33	564.93 ± 2.45	661.27 ± 3.83	757.61 ± 5.21	836.1 ± 6.34
39	489.27 ± 0.54	570.68 ± 1.24	670.61 ± 2.1	770.54 ± 2.96	851.95 ± 3.66

On-line Table 14: Normal percentiles for brain stem cross-sectional area

Gestational Week	3rd Percentile (mm ²)	15th Percentile (mm ²)	50th Percentile (mm ²)	85th Percentile (mm ²)	97th Percentile (mm ²)
26	228.87 ± 3.44	244.62 ± 3.62	263.95 ± 3.84	283.28 ± 4.06	299.03 ± 4.24
27	243.23 ± 5.52	259.76 ± 5.83	280.04 ± 6.21	300.33 ± 6.59	316.85 ± 6.9
28	260.78 ± 5.26	278.32 ± 5.59	299.86 ± 5.98	321.4 ± 6.38	338.95 ± 6.7
29	277.26 ± 4.94	295.86 ± 5.26	318.69 ± 5.66	341.52 ± 6.05	360.11 ± 6.38
30	293.48 ± 5.18	313.07 ± 5.48	337.13 ± 5.83	361.18 ± 6.19	380.78 ± 6.48
31	311.24 ± 5.64	331.7 ± 5.89	356.82 ± 6.19	381.95 ± 6.49	402.41 ± 6.74
32	328.53 ± 4.95	349.76 ± 5.17	375.81 ± 5.45	401.86 ± 5.72	423.08 ± 5.94
33	342.84 ± 3.87	364.82 ± 4.12	391.79 ± 4.43	418.77 ± 4.73	440.74 ± 4.99
34	354.08 ± 3.17	377.02 ± 3.52	405.17 ± 3.94	433.32 ± 4.37	456.25 ± 4.72
35	364.26 ± 3.18	388.54 ± 3.67	418.33 ± 4.26	448.13 ± 4.86	472.4 ± 5.34
36	374.63 ± 3.13	400.72 ± 3.78	432.75 ± 4.57	464.78 ± 5.37	490.87 ± 6.01
37	383.76 ± 2.45	412.23 ± 3.26	447.17 ± 4.25	482.12 ± 5.25	510.58 ± 6.06
38	390.43 ± 1.7	421.66 ± 2.58	459.99 ± 3.67	498.32 ± 4.75	529.55 ± 5.64
39	394.29 ± 0.8	427.83 ± 1.37	469.01 ± 2.06	510.19 ± 2.75	543.74 ± 3.31

On-line Table 15: Normal percentiles for cerebellar perimeter

Gestational Week	3rd Percentile (mm)	15th Percentile (mm)	50th Percentile (mm)	85th Percentile (mm)	97th Percentile (mm)
26	82.25 ± 0.68	86.23 ± 0.74	91.12 ± 0.82	96 ± 0.9	99.98 ± 0.96
27	85.17 ± 1.16	89.42 ± 1.27	94.64 ± 1.4	99.85 ± 1.54	104.1 ± 1.65
28	89.09 ± 1.28	93.71 ± 1.4	99.37 ± 1.54	105.04 ± 1.68	109.65 ± 1.8
29	93.61 ± 1.54	98.62 ± 1.66	104.77 ± 1.82	110.92 ± 1.97	115.93 ± 2.1
30	99.07 ± 1.8	104.49 ± 1.92	111.15 ± 2.08	117.8 ± 2.23	123.22 ± 2.36
31	105.18 ± 1.92	110.99 ± 2.03	118.12 ± 2.17	125.25 ± 2.31	131.06 ± 2.42
32	111.24 ± 1.81	117.36 ± 1.88	124.86 ± 1.98	132.37 ± 2.07	138.48 ± 2.15
33	116.87 ± 1.67	123.16 ± 1.7	130.89 ± 1.74	138.62 ± 1.78	144.91 ± 1.81
34	122.11 ± 1.57	128.41 ± 1.54	136.15 ± 1.5	143.88 ± 1.47	150.18 ± 1.44
35	127.15 ± 1.56	133.25 ± 1.47	140.74 ± 1.36	148.23 ± 1.25	154.33 ± 1.16
36	132.32 ± 1.62	138.07 ± 1.5	145.14 ± 1.35	152.2 ± 1.2	157.95 ± 1.08
37	137.52 ± 1.58	142.85 ± 1.44	149.4 ± 1.27	155.94 ± 1.11	161.27 ± 0.97
38	142.57 ± 1.54	147.46 ± 1.4	153.46 ± 1.24	159.46 ± 1.08	164.35 ± 0.94
39	146.45 ± 0.9	151.01 ± 0.83	156.61 ± 0.74	162.2 ± 0.64	166.76 ± 0.57

On-line Table 16: Normal percentiles for cerebellar cross-sectional area

Gestational Week	3rd Percentile (mm ²)	15th Percentile (mm ²)	50th Percentile (mm ²)	85th Percentile (mm ²)	97th Percentile (mm ²)
26	4.27 ± 0.07	4.65 ± 0.08	5.11 ± 0.08	5.58 ± 0.09	5.96 ± 0.1
27	4.57 ± 0.13	4.98 ± 0.14	5.48 ± 0.15	5.98 ± 0.16	6.39 ± 0.18
28	5.02 ± 0.15	5.47 ± 0.17	6.01 ± 0.18	6.56 ± 0.2	7.01 ± 0.21
29	5.57 ± 0.19	6.06 ± 0.2	6.66 ± 0.22	7.26 ± 0.24	7.75 ± 0.25
30	6.24 ± 0.22	6.78 ± 0.24	7.44 ± 0.26	8.11 ± 0.28	8.65 ± 0.29
31	7.01 ± 0.25	7.6 ± 0.26	8.33 ± 0.28	9.05 ± 0.3	9.64 ± 0.32
32	7.81 ± 0.24	8.45 ± 0.26	9.23 ± 0.27	10.02 ± 0.29	10.66 ± 0.31
33	8.56 ± 0.23	9.25 ± 0.24	10.1 ± 0.26	10.94 ± 0.28	11.63 ± 0.29
34	9.29 ± 0.22	10.02 ± 0.24	10.92 ± 0.25	11.82 ± 0.27	12.56 ± 0.28
35	10.02 ± 0.23	10.79 ± 0.24	11.74 ± 0.25	12.68 ± 0.27	13.45 ± 0.28
36	10.78 ± 0.24	11.58 ± 0.24	12.56 ± 0.25	13.54 ± 0.27	14.35 ± 0.27
37	11.53 ± 0.23	12.36 ± 0.23	13.37 ± 0.24	14.39 ± 0.25	15.21 ± 0.26
38	12.26 ± 0.22	13.1 ± 0.23	14.14 ± 0.23	15.18 ± 0.24	16.03 ± 0.25
39	12.82 ± 0.13	13.68 ± 0.13	14.74 ± 0.14	15.79 ± 0.14	16.66 ± 0.15

On-line Table 17: Normal percentiles for VCMR

Gestational Week	3rd Percentile	15th Percentile	50th Percentile	85th Percentile	97th Percentile
26	4.27 ± 0.07	4.65 ± 0.08	5.11 ± 0.08	5.58 ± 0.09	5.96 ± 0.1
27	4.57 ± 0.13	4.98 ± 0.14	5.48 ± 0.15	5.98 ± 0.16	6.39 ± 0.18
28	5.02 ± 0.15	5.47 ± 0.17	6.01 ± 0.18	6.56 ± 0.2	7.01 ± 0.21
29	5.57 ± 0.19	6.06 ± 0.2	6.66 ± 0.22	7.26 ± 0.24	7.75 ± 0.25
30	6.24 ± 0.22	6.78 ± 0.24	7.44 ± 0.26	8.11 ± 0.28	8.65 ± 0.29
31	7.01 ± 0.25	7.6 ± 0.26	8.33 ± 0.28	9.05 ± 0.3	9.64 ± 0.32
32	7.81 ± 0.24	8.45 ± 0.26	9.23 ± 0.27	10.02 ± 0.29	10.66 ± 0.31
33	8.56 ± 0.23	9.25 ± 0.24	10.1 ± 0.26	10.94 ± 0.28	11.63 ± 0.29
34	9.29 ± 0.22	10.02 ± 0.24	10.92 ± 0.25	11.82 ± 0.27	12.56 ± 0.28
35	10.02 ± 0.23	10.79 ± 0.24	11.74 ± 0.25	12.68 ± 0.27	13.45 ± 0.28
36	10.78 ± 0.24	11.58 ± 0.24	12.56 ± 0.25	13.54 ± 0.27	14.35 ± 0.27
37	11.53 ± 0.23	12.36 ± 0.23	13.37 ± 0.24	14.39 ± 0.25	15.21 ± 0.26
38	12.26 ± 0.22	13.1 ± 0.23	14.14 ± 0.23	15.18 ± 0.24	16.03 ± 0.25
39	12.82 ± 0.13	13.68 ± 0.13	14.74 ± 0.14	15.79 ± 0.14	16.66 ± 0.15

On-line Table 18: Normal percentiles for VLR and CHR

Parameter	3rd Percentile	15th Percentile	50th Percentile	85th Percentile	97th Percentile
VLR	0.47 ± 0.02	0.54 ± 0.015	0.63 ± 0.014	0.72 ± 0.02	0.80 ± 0.03
CHR	0.89 ± 0.02	0.94 ± 0.01	1.00 ± 0.01	1.06 ± 0.03	1.11 ± 0.04

On-line Table 19: ICC coefficient between 2 measurers

Variable	ICC	95% CI	Mean Difference	Standard Difference	95% Level of Agreement
CS (cm ²)	0.983	(0.96–0.99)	0.275	0.371	(–0.45,1)
CP (mm)	0.977	(0.95–0.99)	2.528	2.553	(–2.48,7.53)
TCD (mm)	0.975	(0.94–0.99)	0.867	0.947	(–0.99,2.72)
VH (mm)	0.964	(0.92–0.98)	0.319	0.58	(–0.82,1.46)
CMS (mm ²)	0.96	(0.91–0.98)	–20.434	22.022	(–63.6,22.73)
VS (mm ²)	0.954	(0.9–0.98)	10.774	13.712	(–16.1,37.65)
VALS (mm ²)	0.954	(0.9–0.98)	1.385	6.556	(–11.46,14.23)
VPLS (mm ²)	0.938	(0.87–0.97)	6.706	10.424	(–13.72,27.14)
BSS (mm ²)	0.889	(0.77–0.95)	4.31	24.82	(–44.34,52.96)
PS (mm ²)	0.871	(0.73–0.94)	–0.352	13.292	(–26.4,25.7)
APDV (mm)	0.824	(0.64–0.92)	0.415	1.09	(–1.72,2.55)
APDP (mm)	0.804	(0.61–0.91)	0.177	0.704	(–1.2,1.56)
VP (mm)	0.68	(0.4–0.84)	5.5	5.308	(–4.9,15.9)
PH (mm)	0.68	(0.4–0.84)	0.253	0.803	(–1.32,1.83)

Note:—APDP indicates pontine anteroposterior diameter; PH, pontine height; PS, pontine cross-sectional area; CS, cerebellar cross-sectional area; CP, cerebellar perimeter; VH, vermian height; VALS, vermian anterior lobe cross-sectional area; VPLS, vermian posterior lobe cross-sectional area; BSS, brain stem cross-sectional area; APDP, anteroposterior diameter of the pons.