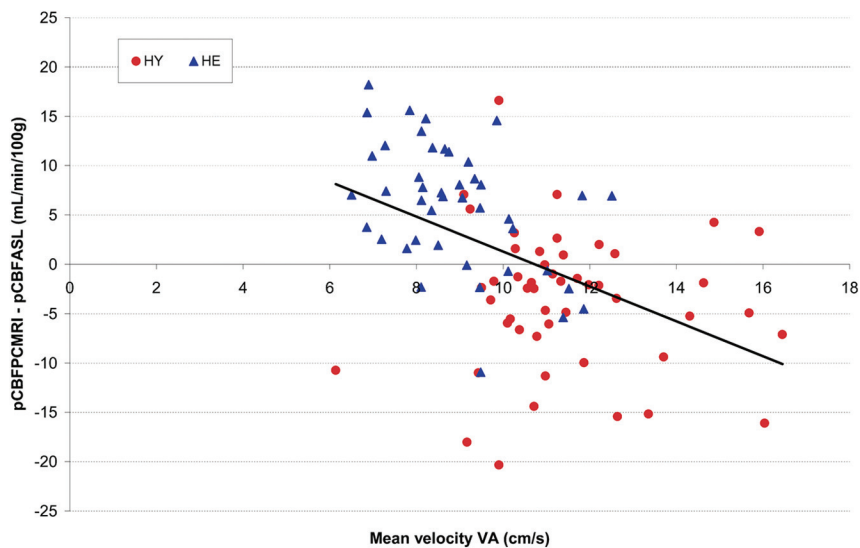
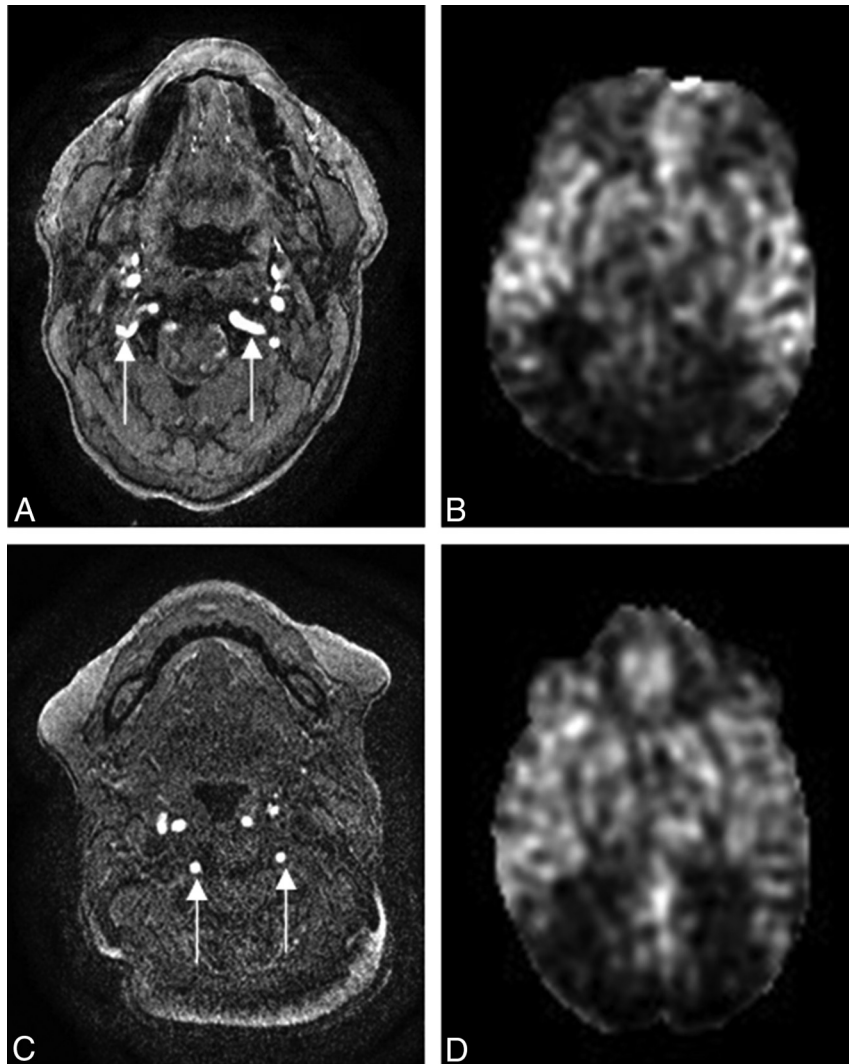


ON-LINE FIG 1. Images of pCBF_{ASL} (left), segmented GM (middle), and segmented WM (right) in a healthy young subject (A) and a healthy elderly subject (B). The GM and WM partial volume maps were down-sampled to the same resolution as that of ASL.



ON-LINE FIG 2. Scatterplot of the difference between pCBF from PCMRI and ASL and the mean VA velocity. The correlation coefficient r is -0.48 ($P < .001$).



ON-LINE FIG 3. Positioning of the labeling plane with TOF angiography and the corresponding perfusion ASL data. *A and B*, A healthy elderly subject with a clear bend on both vertebral arteries (*A*, white arrows); the ASL data show correspondingly low perfusion in the posterior region. *C and D*, Another healthy elderly subject with low perfusion in the posterior region but with the labeling plane perpendicular to the vertebral arteries (*C*, white arrows).