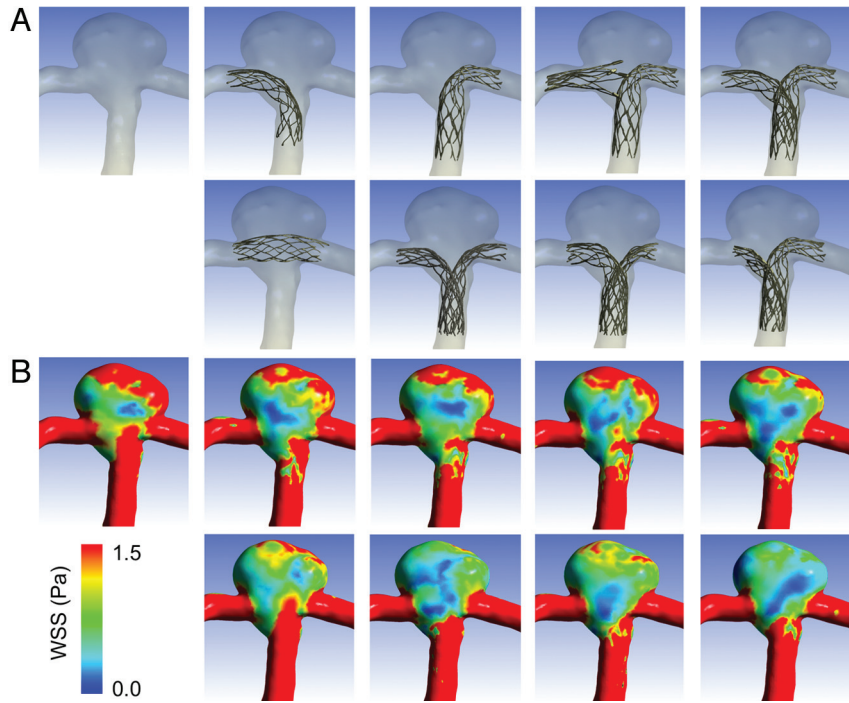


**ON-LINE FIG 1.** A, Reconstructed images of various stent configurations are the same as those shown in Fig 3A. B, Streamlines colored according to flow velocity at diastole are shown in the same arrangement as in Fig 3A. Stents are transparent so that streamlines can be clearly seen.



**ON-LINE FIG 2.** A, Reconstructed images of various stent configurations that are the same as those shown in Fig 3A. B, Contours of cycle-averaged wall shear stress are shown in the same arrangement as in Fig 3A.