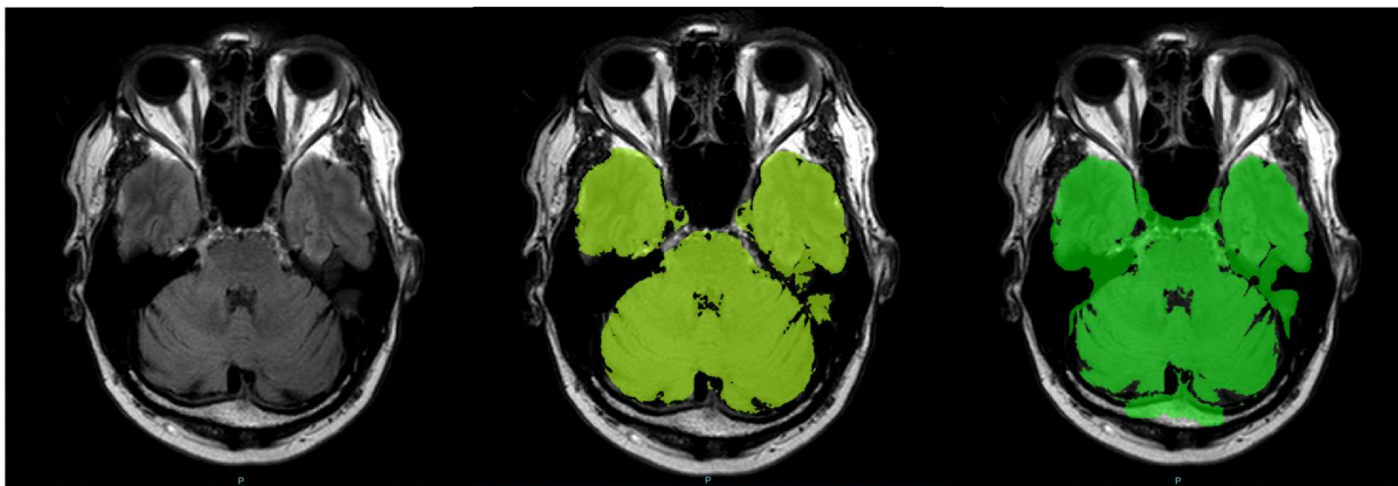


Supplementary Figure 1

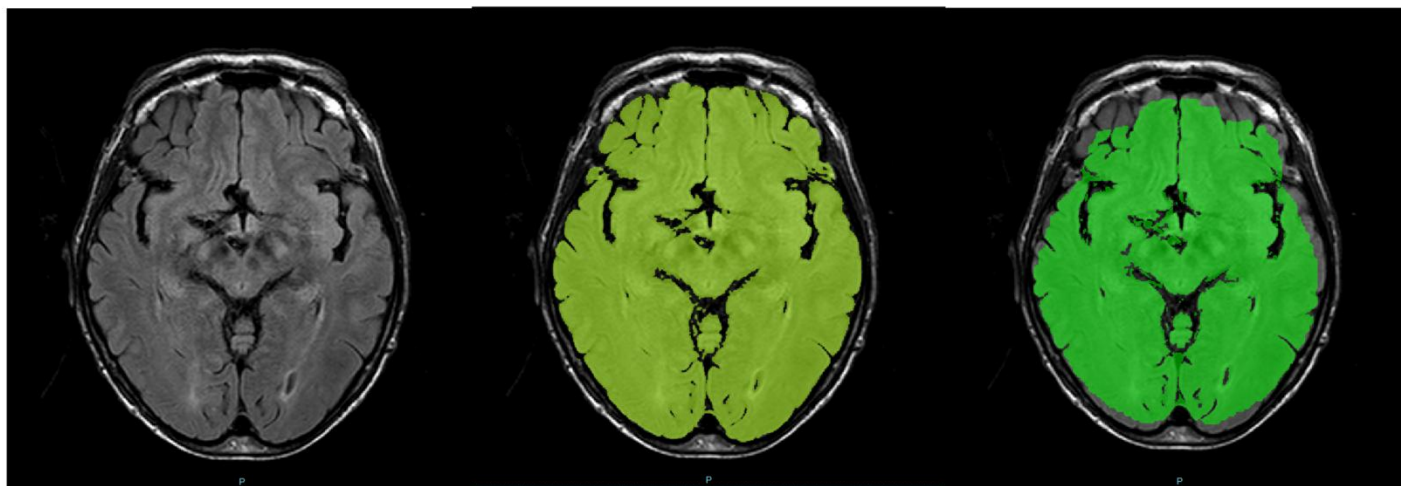
Manual (**b** and **e**) and automatic (**c** and **f**) segmentation of brain tissue volume (BTv). The standard segmentation is shown in yellow; the automatic segmentation is shown in green. **c** and **f** illustrate the automatic over and under-estimation of BV, respectively.



a

b

c



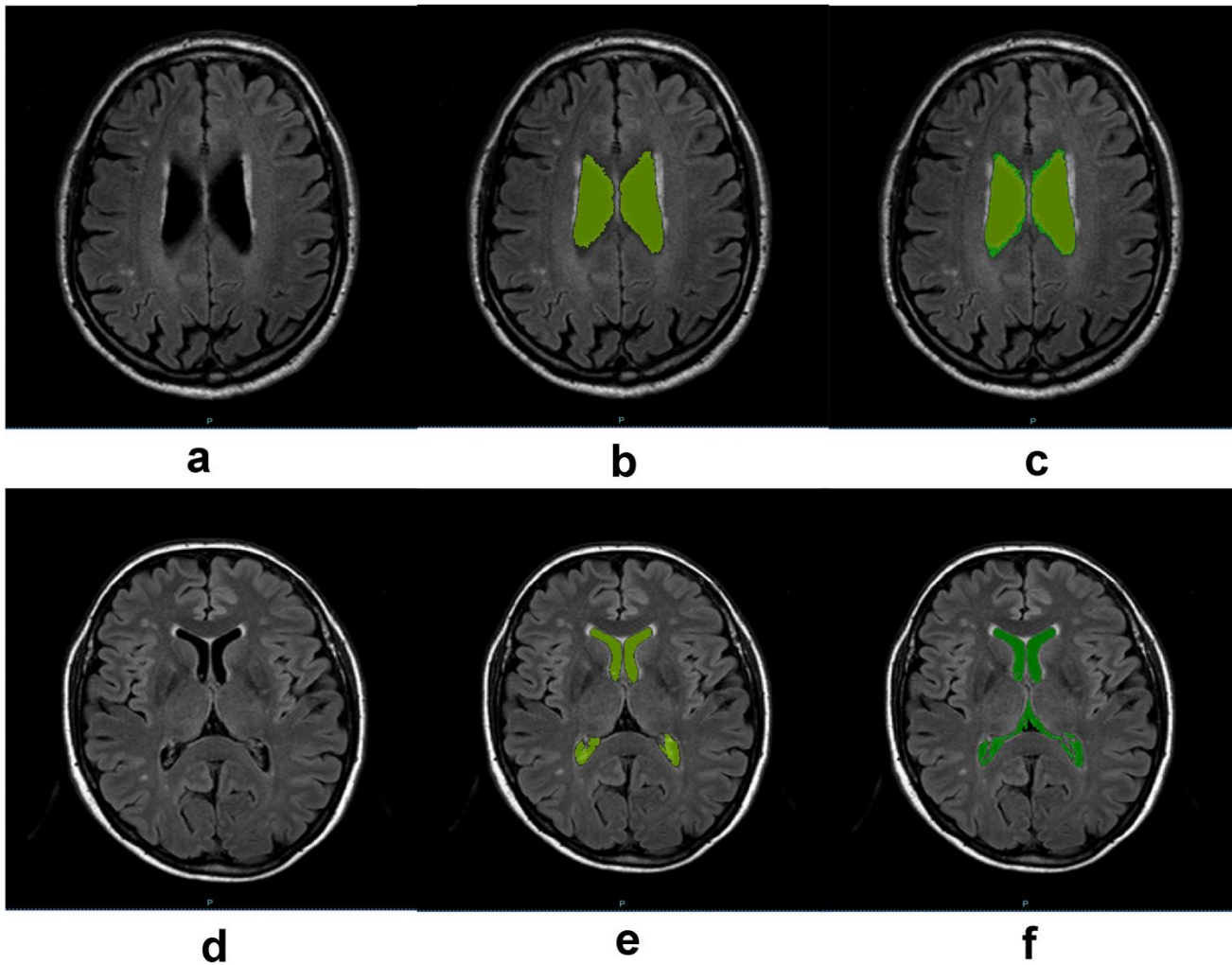
d

e

f

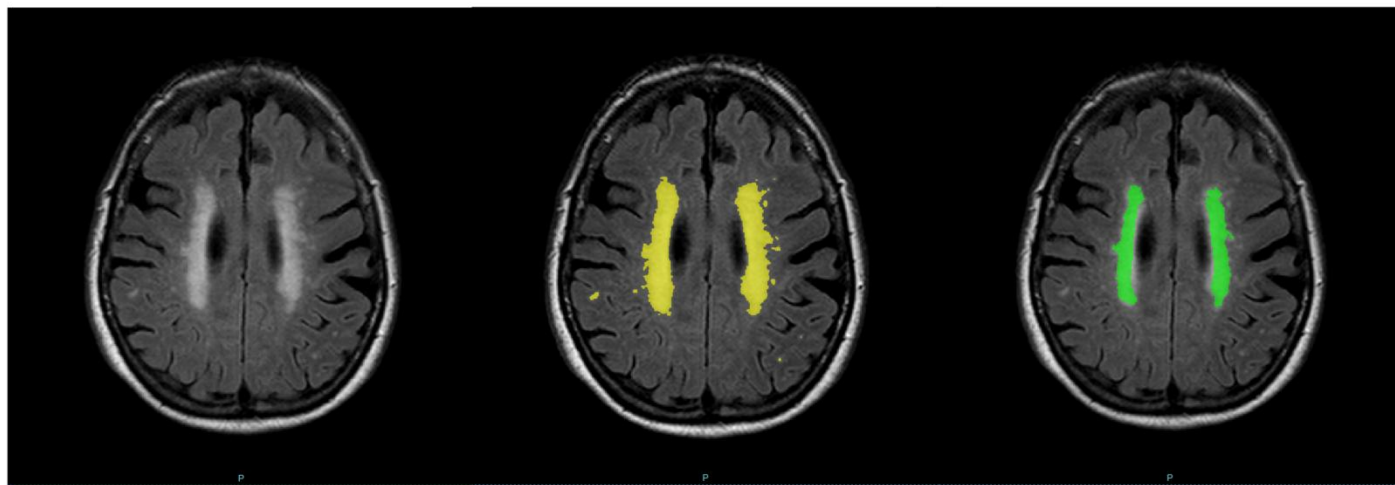
Supplementary Figure 2

Manual (**b** and **e**) and automatic (**c** and **f**) segmentation of intracranial volume (ICV). The standard segmentation is shown in yellow; the automatic segmentation is shown in green. **c** and **f** illustrate the automatic under-estimation of ICV.



Supplementary Figure 3

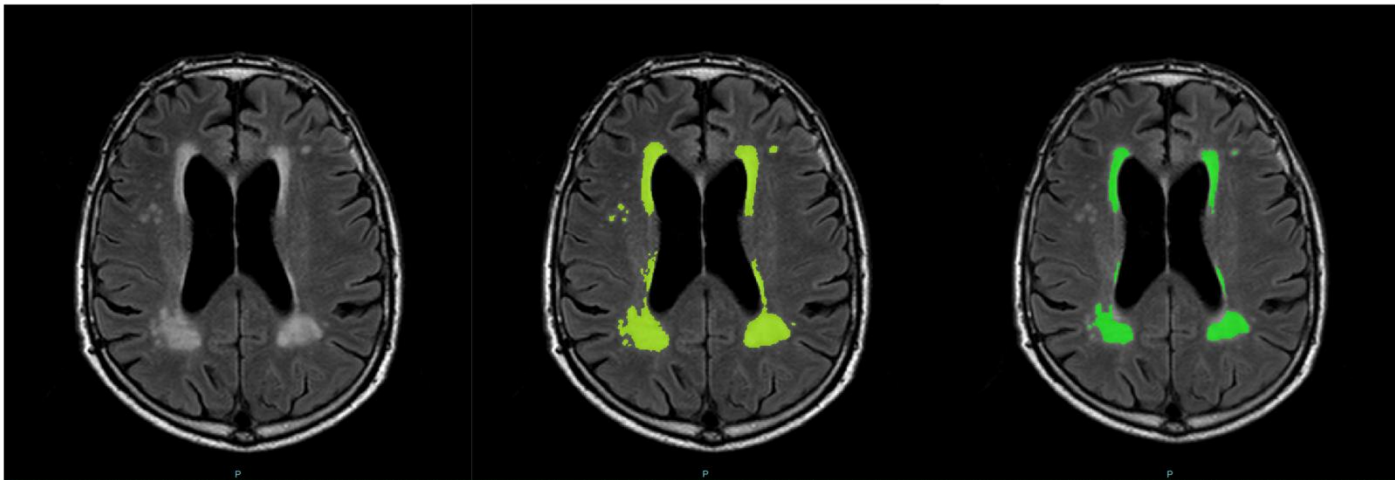
Manual (**b**, **e**) and automatic (**c** and **f**) segmentation of ventricular volume (VV). The standard segmentation is shown in yellow; the automatic segmentation is shown in green. **c** and **f** illustrate the automatic overestimation of VV.



a

b

c



d

e

f

Supplementary Figure 4

Manual (**b** and **e**) and automatic (**c** and **f**) segmentation of white matter hyperintensities volume (WMHV). The standard segmentation is shown in yellow; the automatic segmentation is shown in green. **c** and **f** illustrate the automatic under-estimation of WMHV.