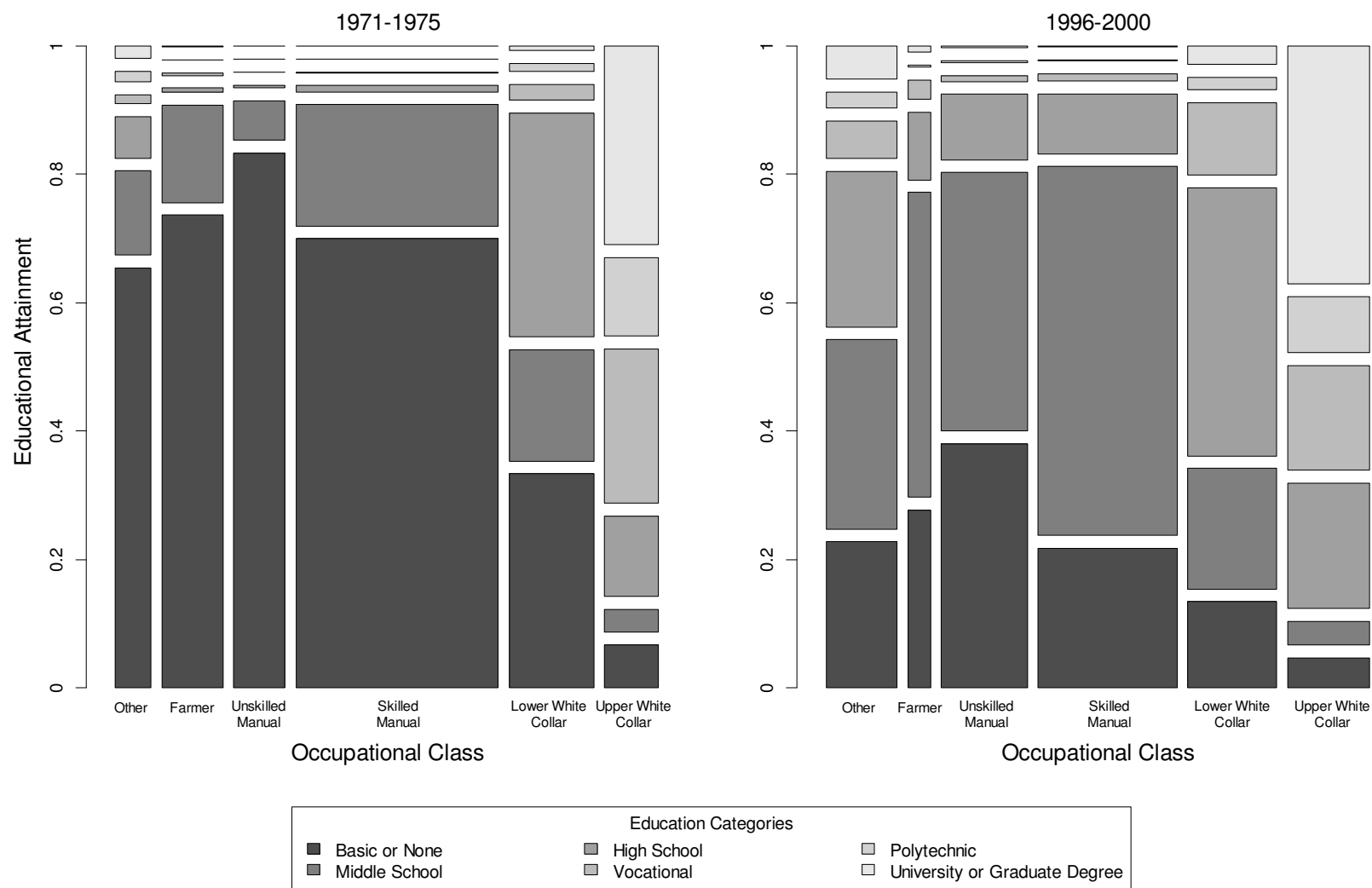


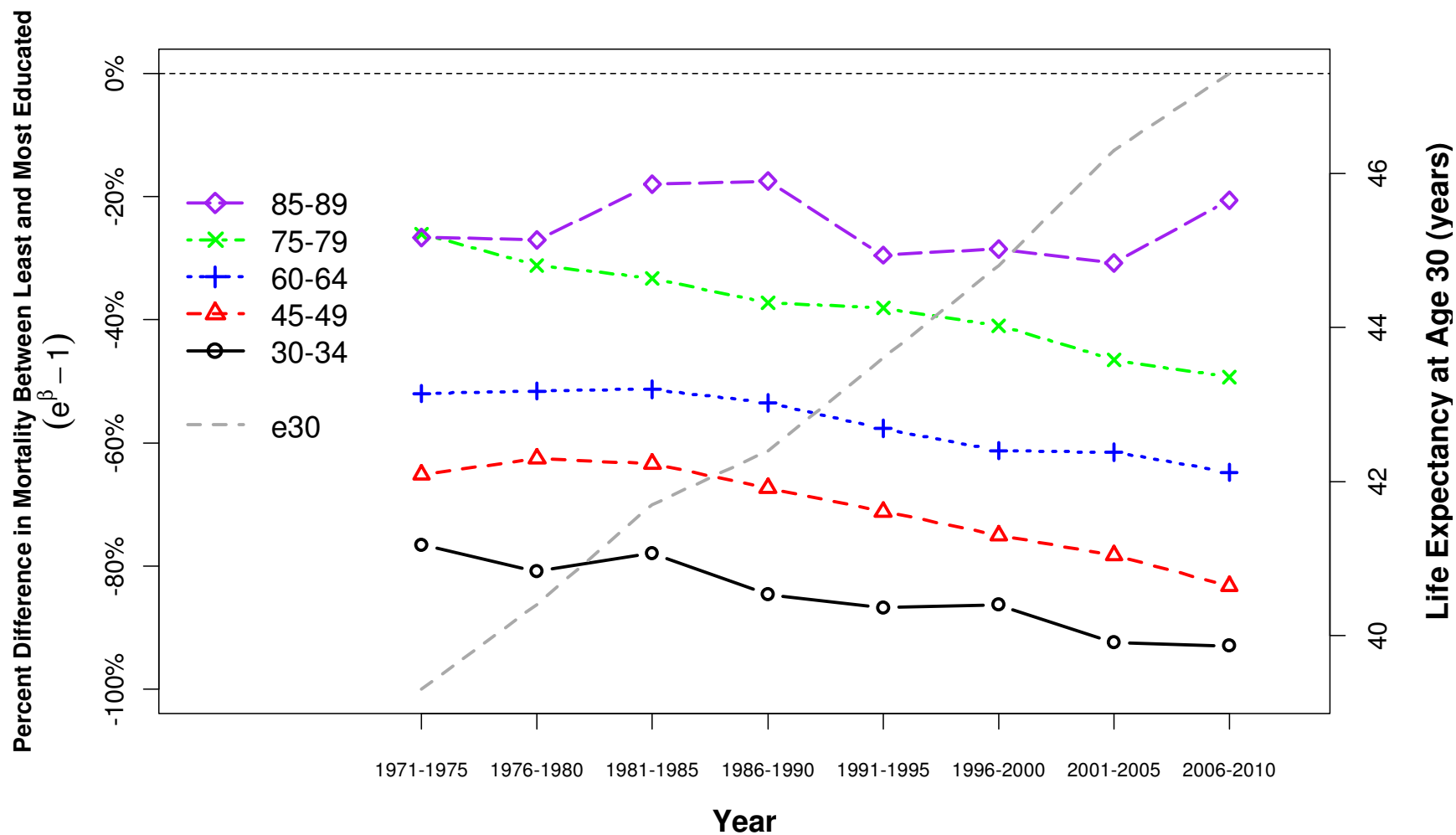
Appendix Figure 1. Education Distribution by Occupation Category, Finnish Men, 1971-1975 and 1996-2000



Source: Authors' calculations based on Finnish census data.

Note: The left axis shows the relative frequency of education groups within a given occupation. The areas of the blocks are proportional to the total size of the occupation-education group.

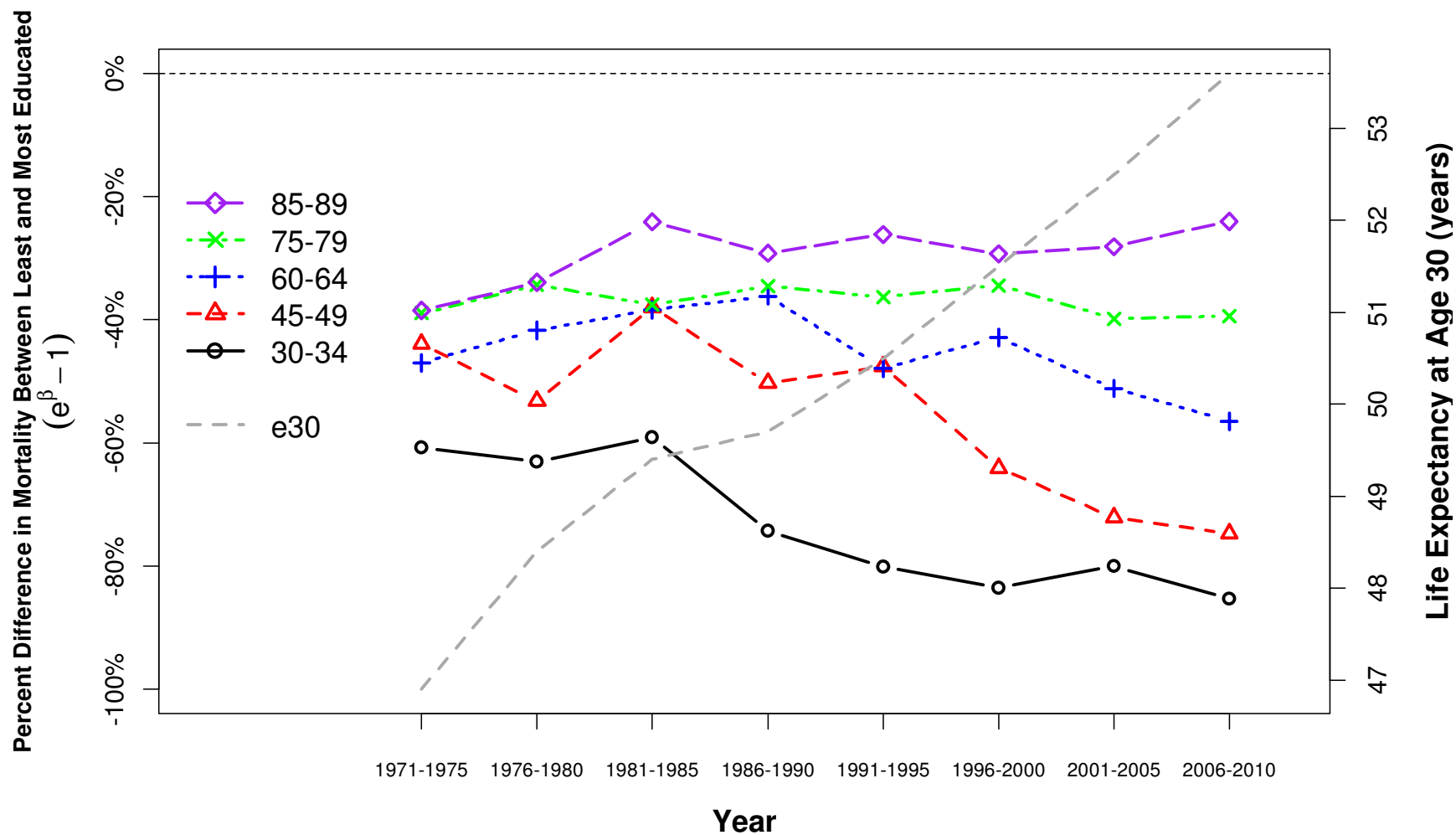
Appendix Figure 2. Percent Difference in Mortality Between the Least and Most Educated by Age and Year, Males, Finland 1971-2010



Source: Authors' calculations based on Finnish registry data and censuses.

Note: Values are estimated on the basis of regressions described in the text.

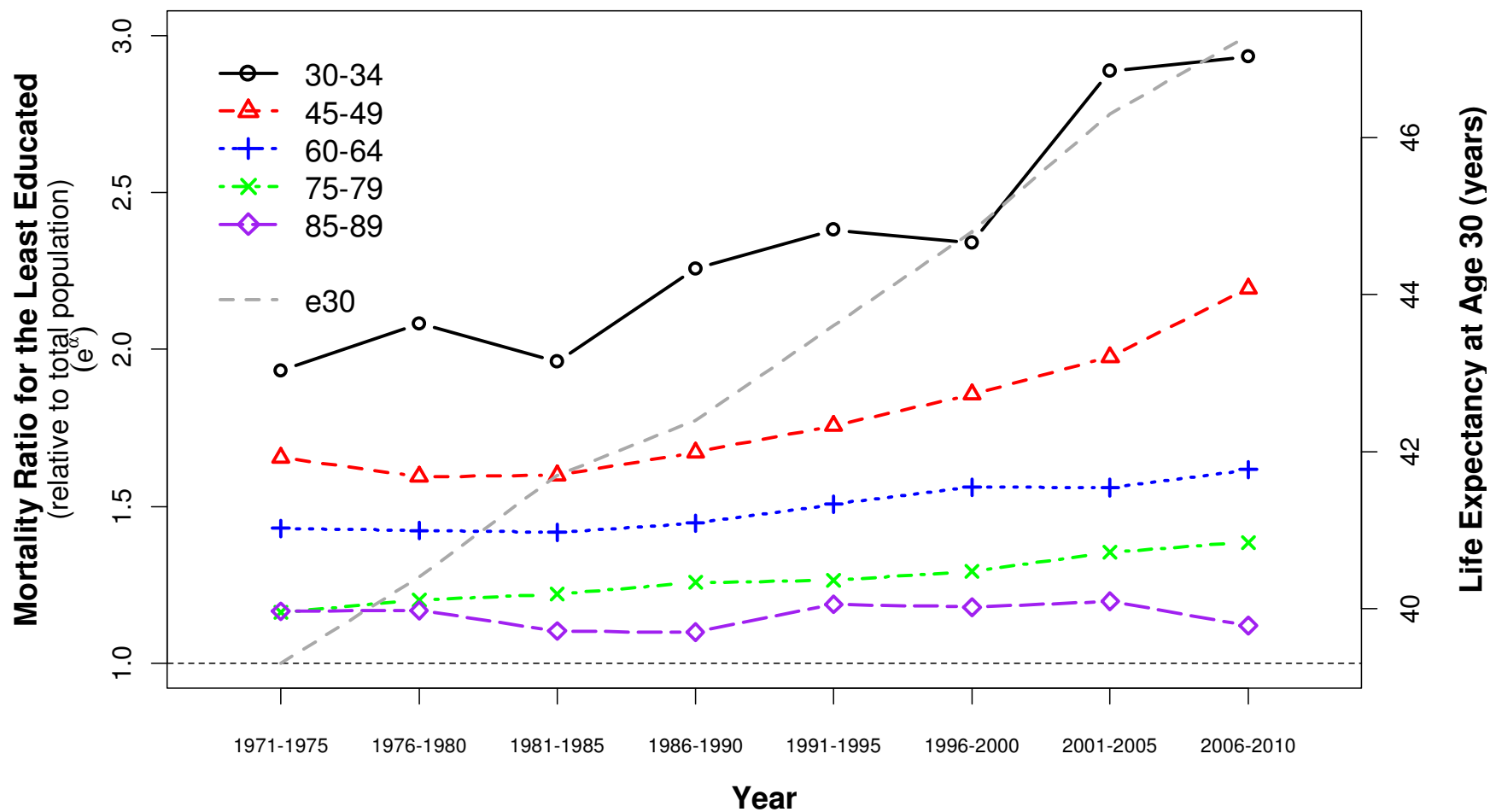
Appendix Figure 3. Percent Difference in Mortality Between the Least and Most Educated by Age and Year, Females, Finland 1971-2010



Source: Authors' calculations based on Finnish registry data and censuses.

Note: Values are estimated on the basis of regressions described in the text.

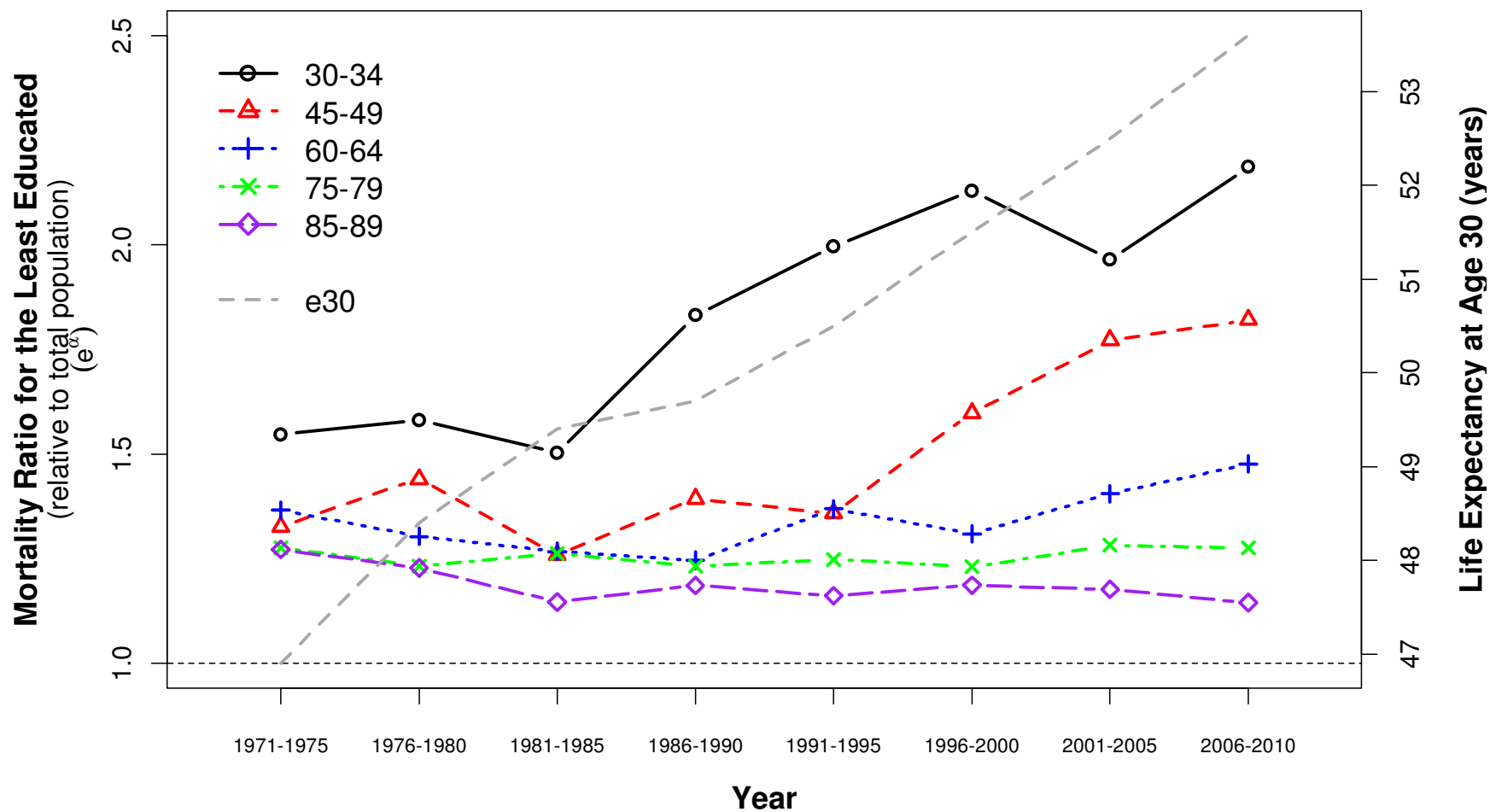
Appendix Figure 4. Ratio of Mortality among the Least Educated (0th percentile) to Overall Mortality by Age and Year, Males, Finland 1971-2010



Source: Authors' calculations based on Finnish registry data and censuses.

Note: Values are estimated on the basis of regressions described in the text.

Appendix Figure 5. Ratio of Mortality among the Least Educated (0th percentile) to Overall Mortality by Age and Year, Females, Finland 1971-2010



Source: Authors' calculations based on Finnish registry data and censuses.

Note: Values are estimated on the basis of regressions described in the text.