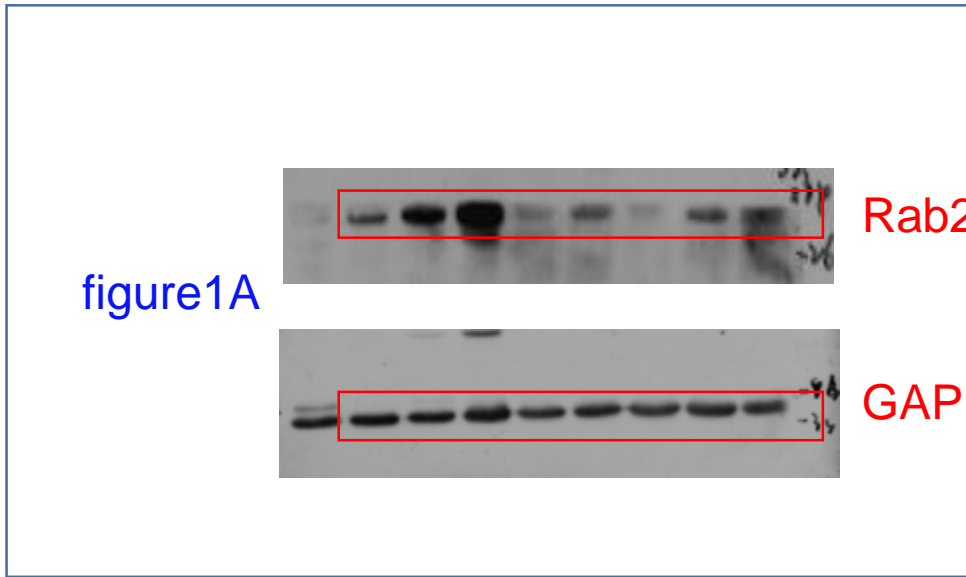


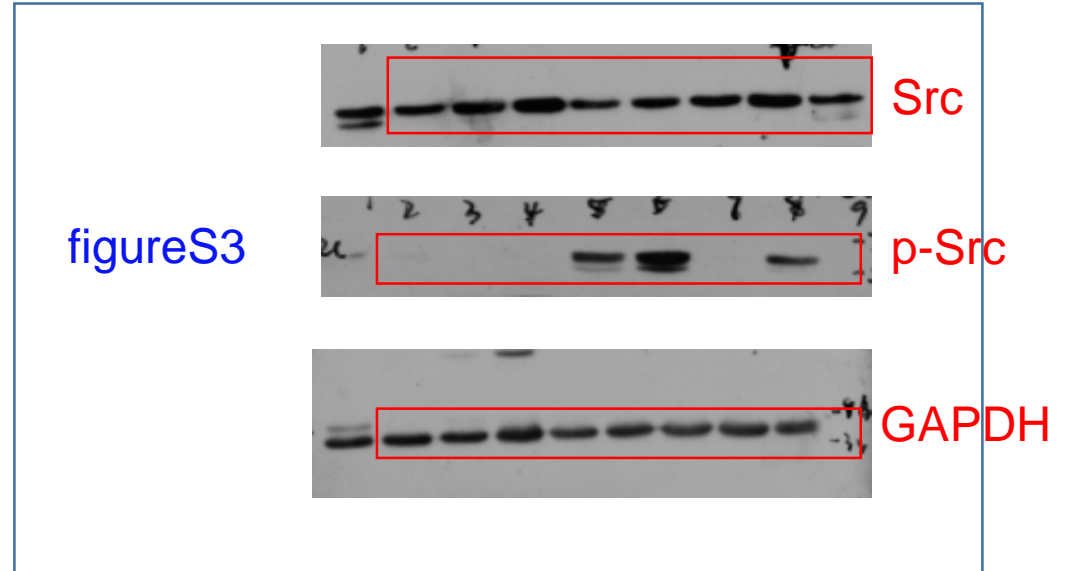
Rab26 suppresses migration and invasion of breast cancer cells through
mediating autophagic degradation of phosphorylated Src

Huiying Liu et al

The original Western blots Data



two figures share one
internal reference



figureS1B

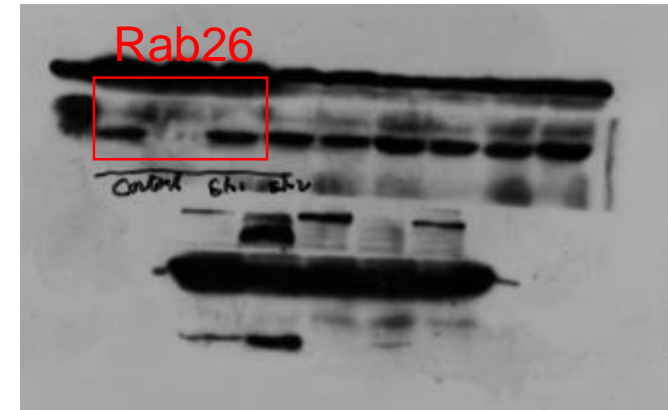
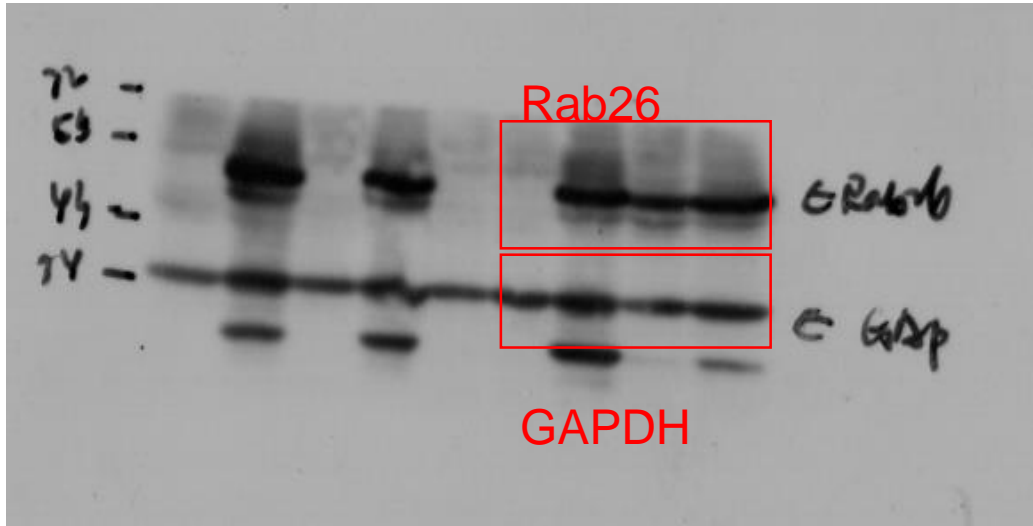


figure2A

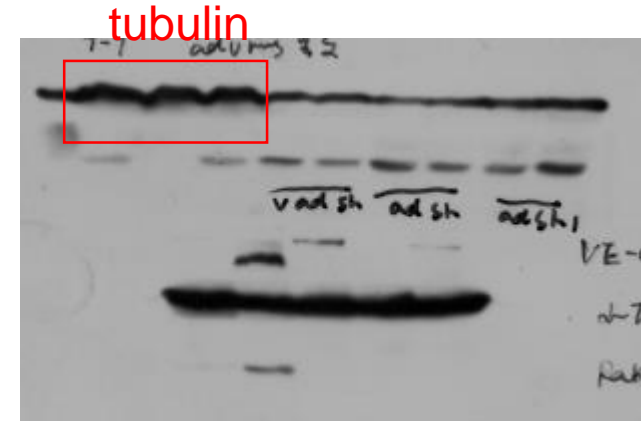


figure4B

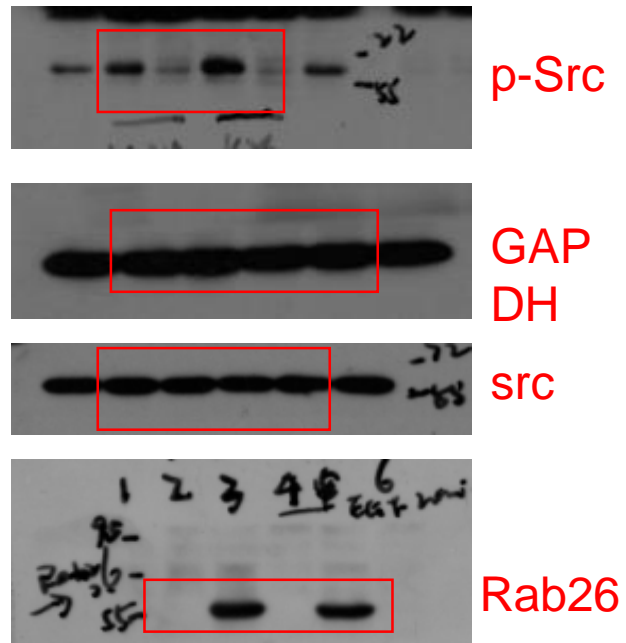
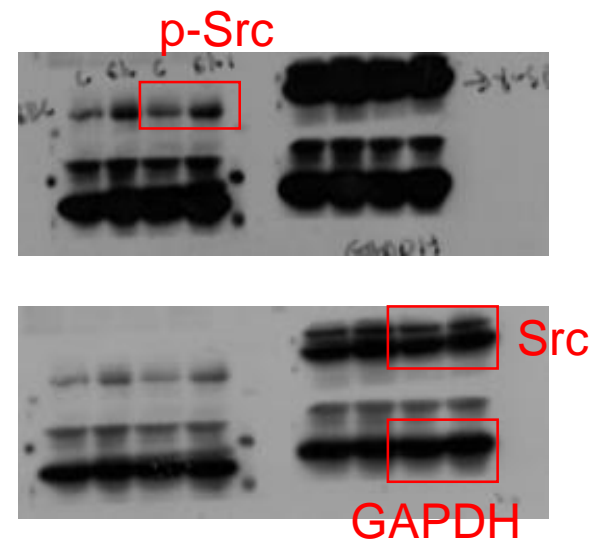


figure4D



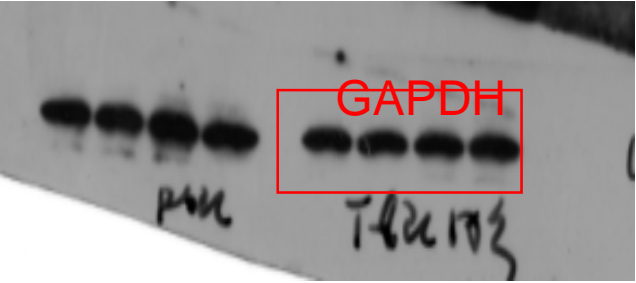
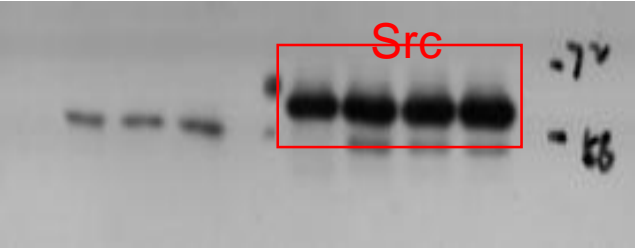
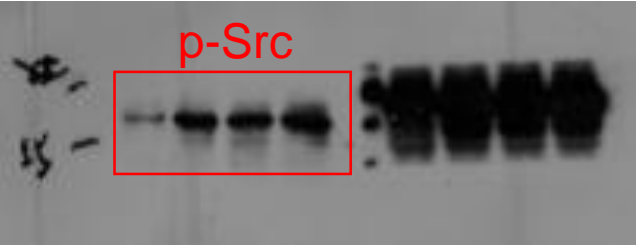


figure5A

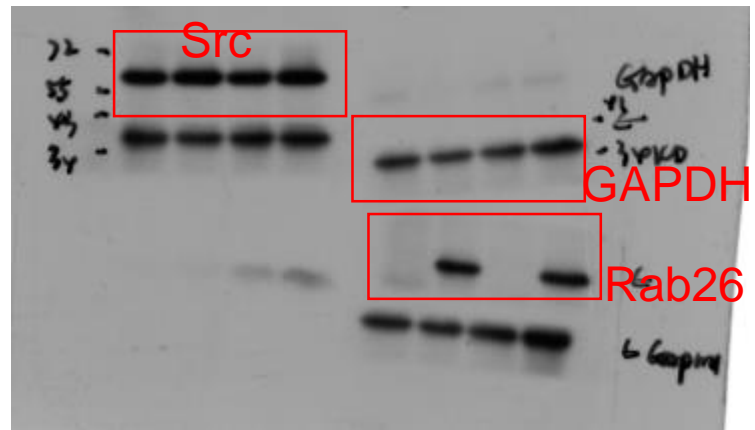
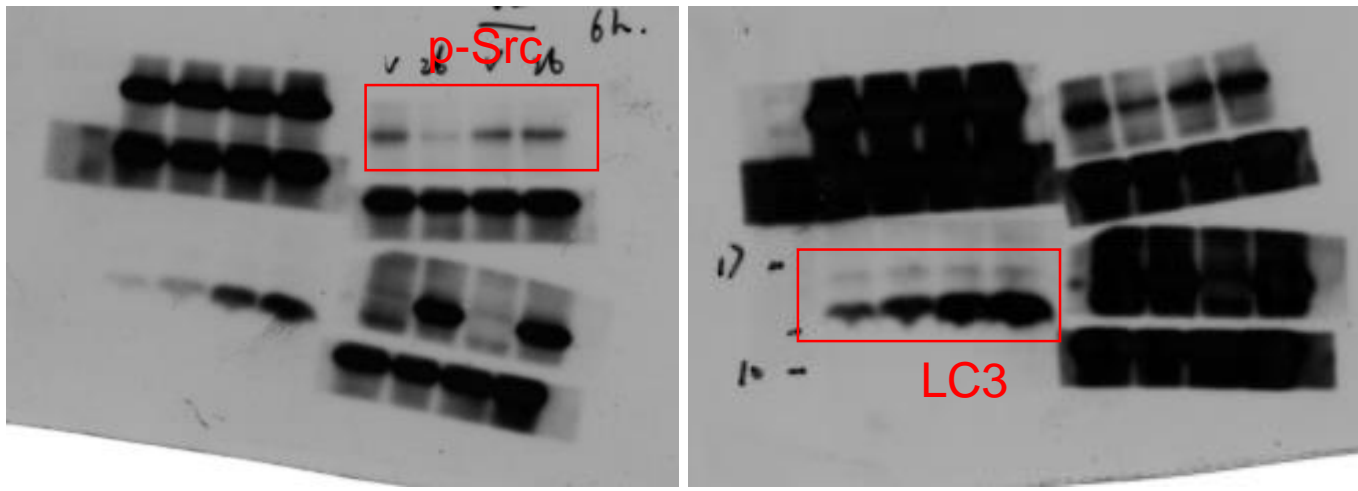
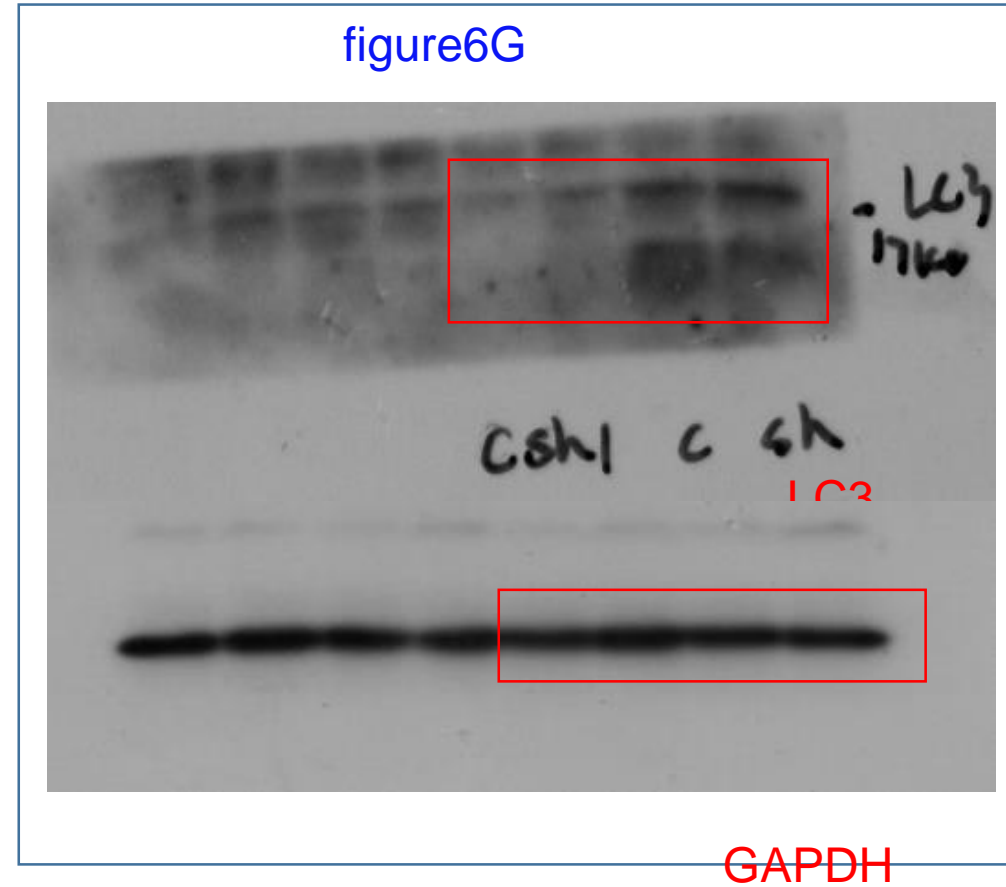


figure6E



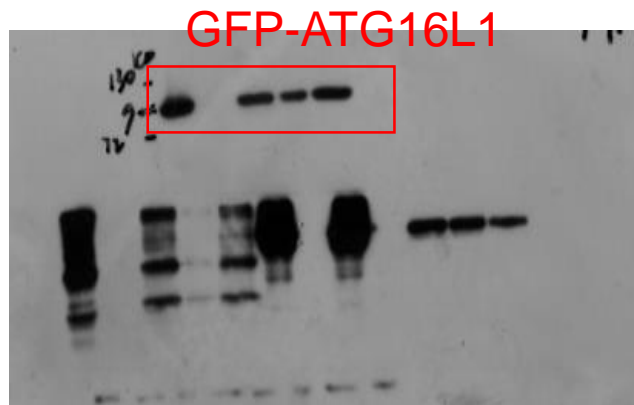


figure7A

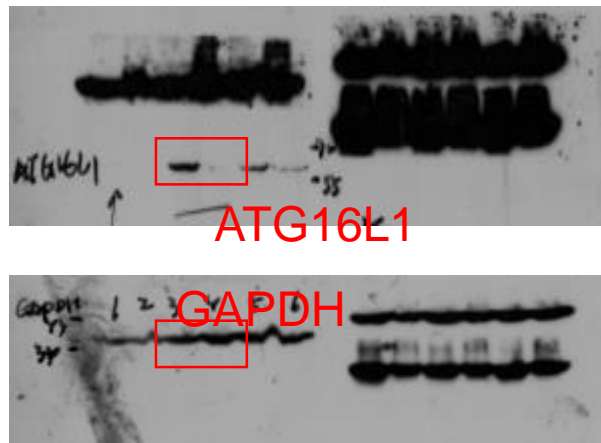


figure7B

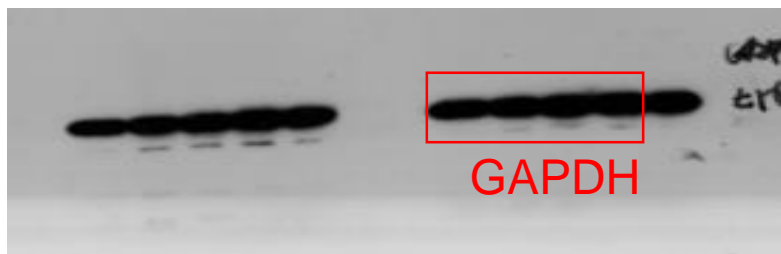
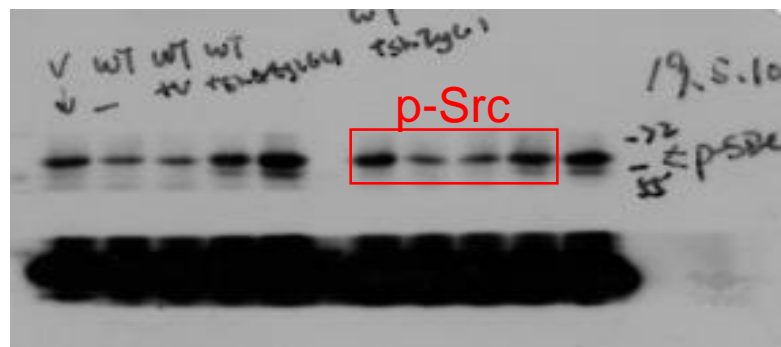


figure7C

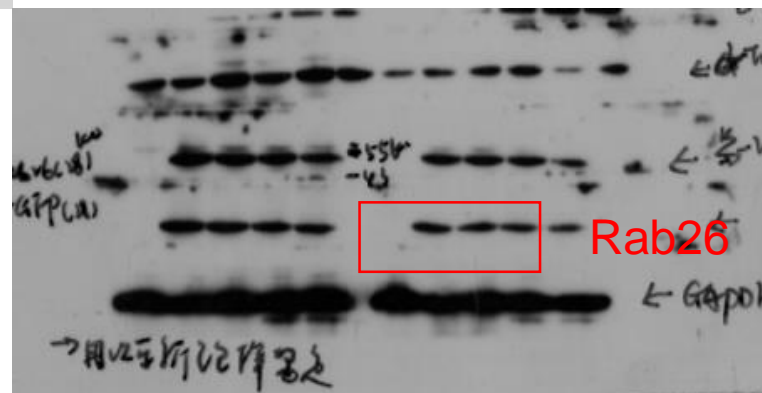
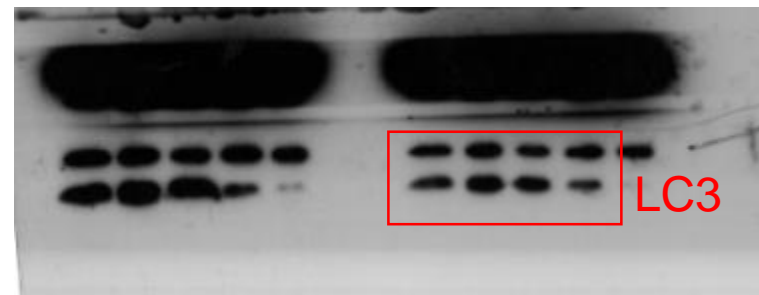
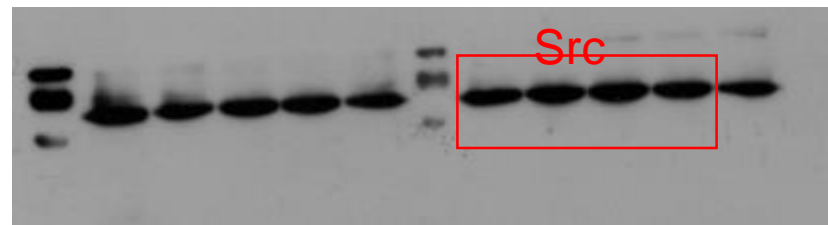
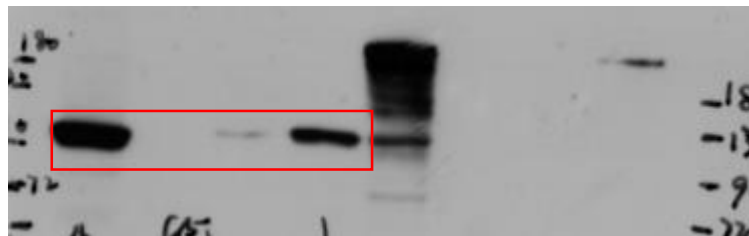


figure8F



GFP-ATG16L1

figure8.H

