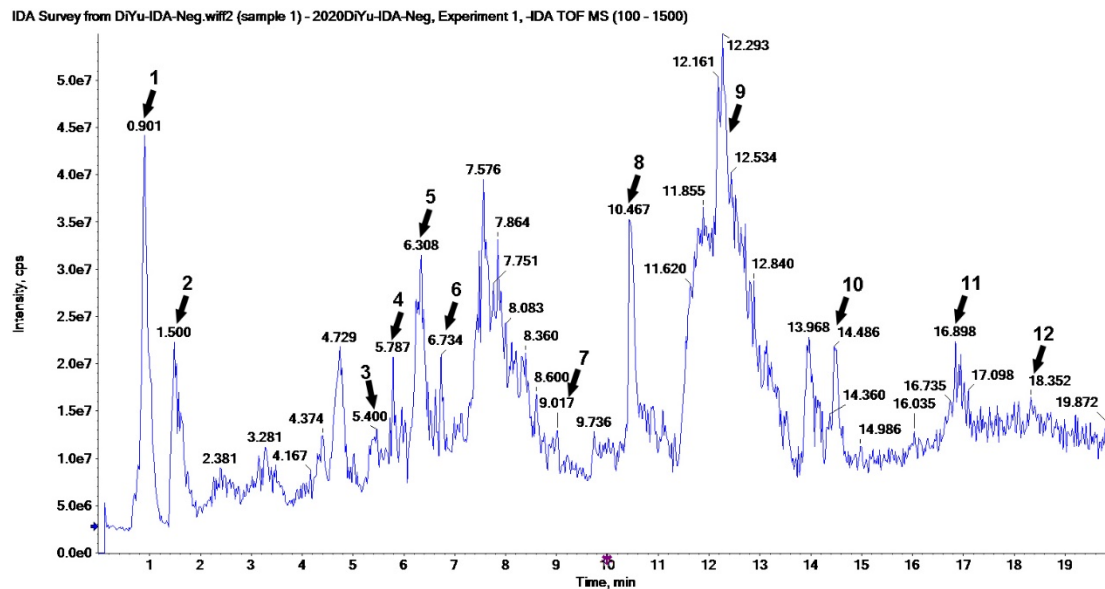


## Supplementary Figures



**Supplementary figure 1.** UPLC-Q-TOF/MS total ion chromatograms of ESO under negative ion mode. 1. 3,7,8-Tri-O-methylelagic acid; 2. Quercetin; 3. methyl-6-O -galloyl- $\beta$ -D-glucopyranoside; 4, methyl-2,3,6-tri-O-galloyl- $\beta$ -D-glucopyranoside; 5. kaempferol; 6. beta-sitosterol; 7. methyl 4,6-di-O-galloyl-beta-D-glucopyranoside; 8. gambiriin B-3; 9. 3-O-galloylprocyanidin B-3; 10. sauvissimoside R1; 11. alexandrin\_qt; 12. mairin.