

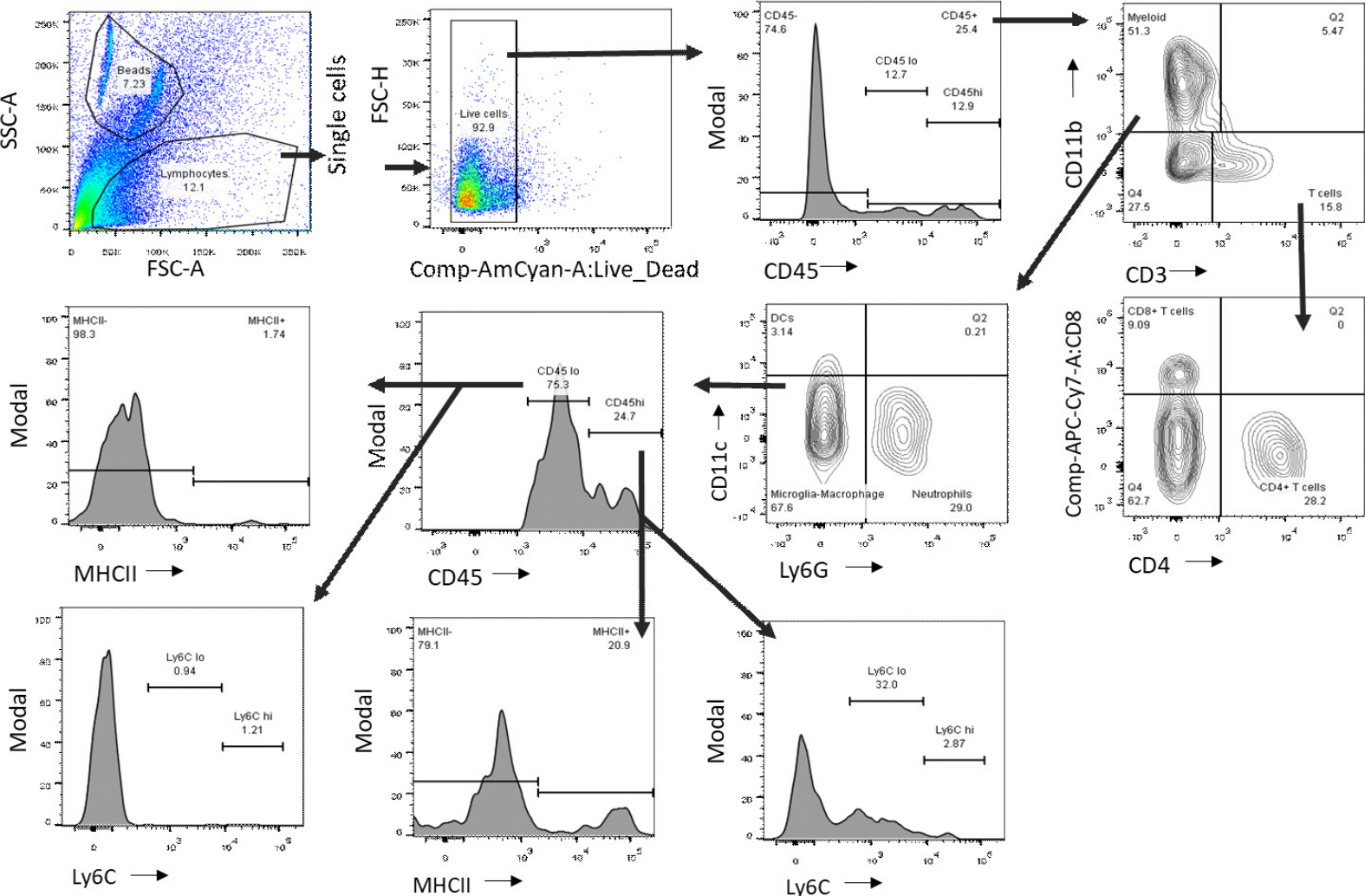
Poldip2 controls leukocyte infiltration into the ischemic brain by regulating focal adhesion kinase-mediated VCAM-1 induction

Lori N. Eidson ¹, Qingzeng Gao ², Hongyan Qu ², Daniel S. Kikuchi ², Ana Carolina P. Campos ^{2,4}, Elizabeth A. Faidley ², Yu-Yo Sun ³, Chia-Yi Kuan ³, Rosana L. Pagano ⁴, Bernard Lassègue ², Malú G. Tansey ^{1,5}, Kathy K. Griendling ², & Marina S. Hernandez ^{2*}

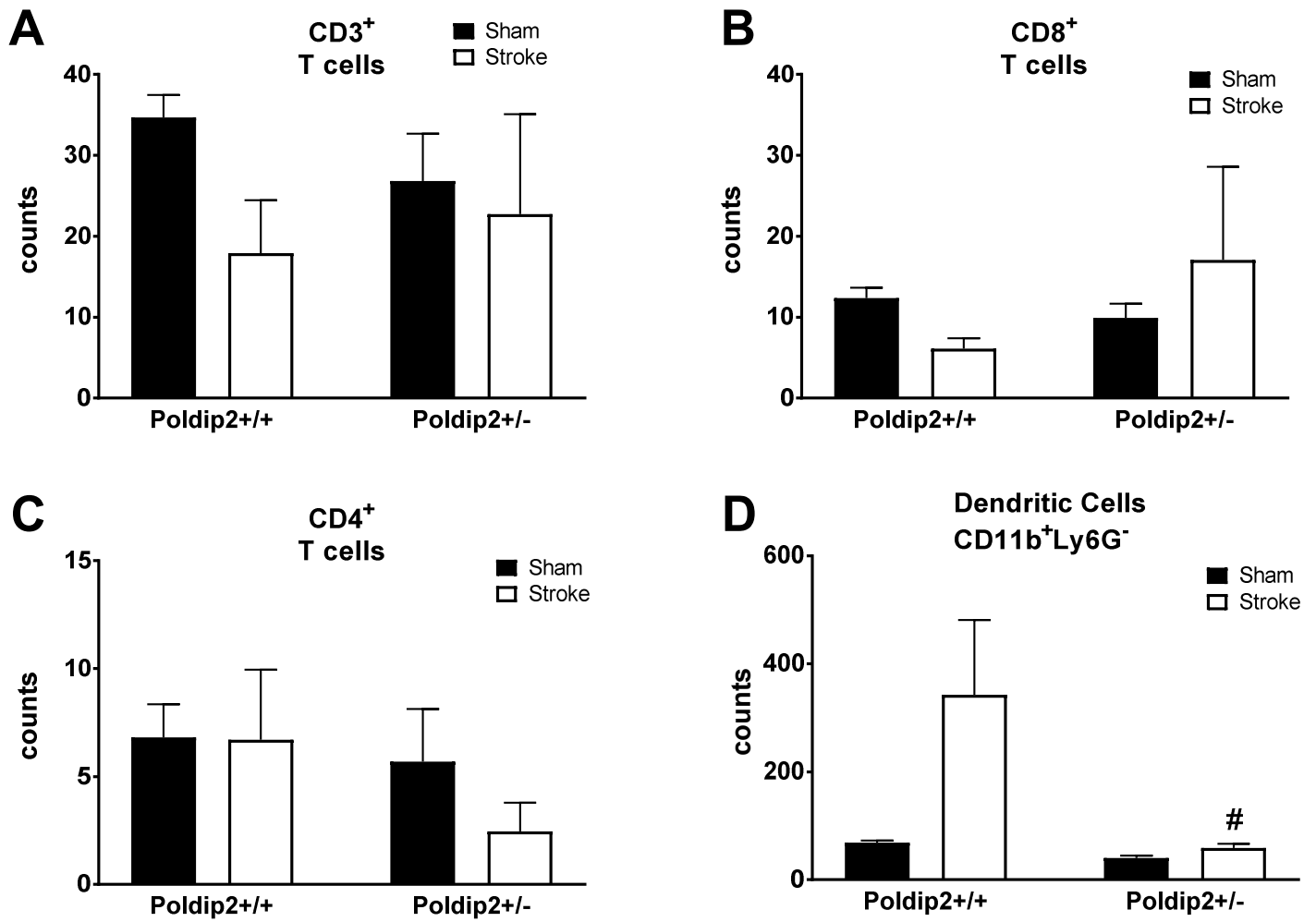
¹Department of Physiology, Emory University, Atlanta GA 30322; ²Division of Cardiology, Department of Medicine, Emory University, Atlanta GA 30322; ³Department of Neuroscience, University of Virginia, Charlottesville, VA 22904; ⁴Department of Neuroscience, Hospital Sírio-Libanês, São Paulo, Brazil; ⁵Departments of Neuroscience and Neurology, Center for Translational Research in Neurodegenerative Disease, College of Medicine, Normal Fixel Institute for Neurological Diseases, University of Florida, Gainesville, FL 32610;

* Corresponding author: mshern2@emory.edu

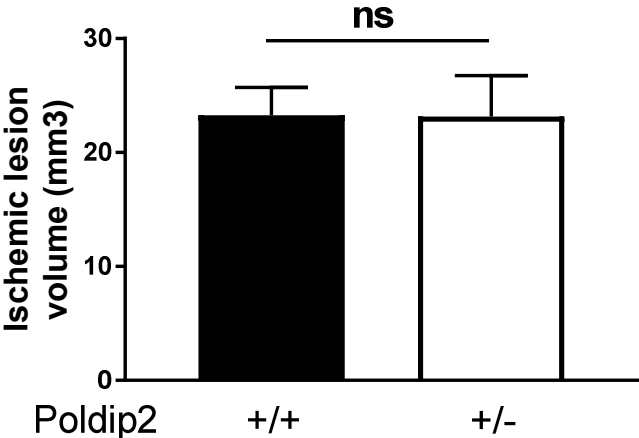
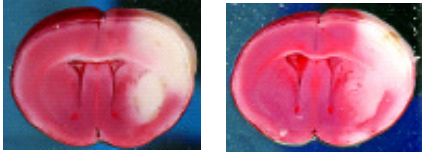
Supplemental Figure 1



Supplemental Figure 2



Supplemental Figure 3

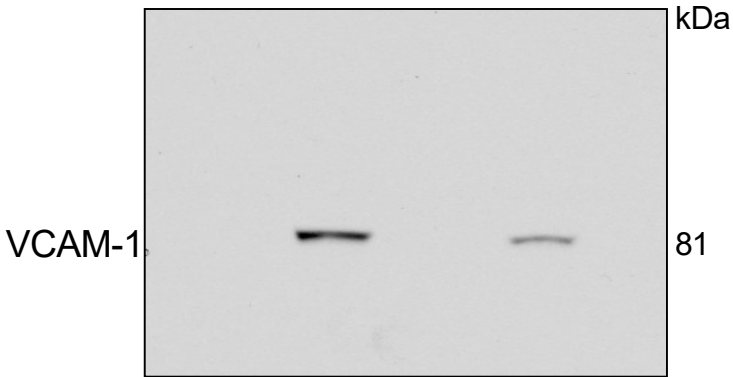


Supplemental Figure 4

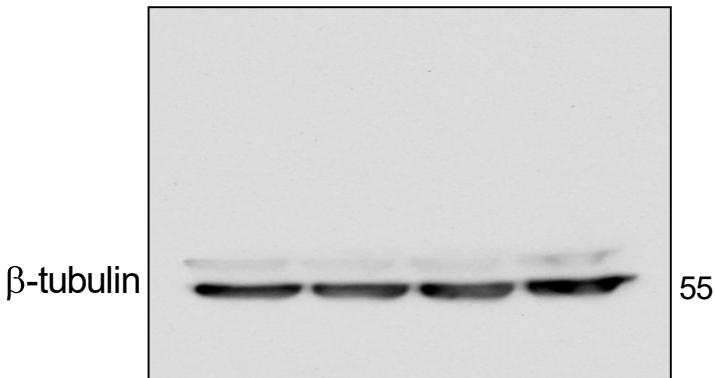
(original western blots for Figure 3)

A

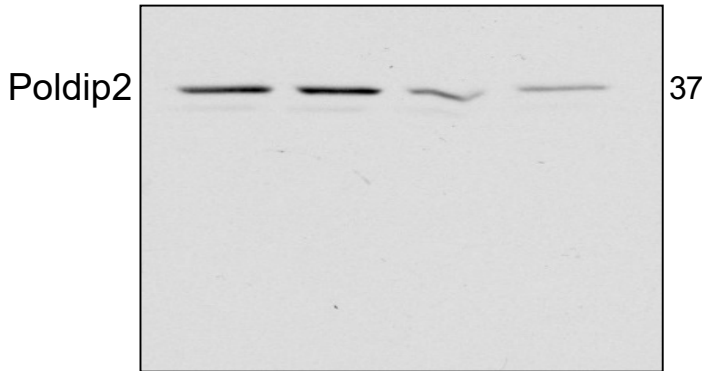
siControl siPoldip2
PBS TNF PBS TNF



siControl siPoldip2
PBS TNF PBS TNF

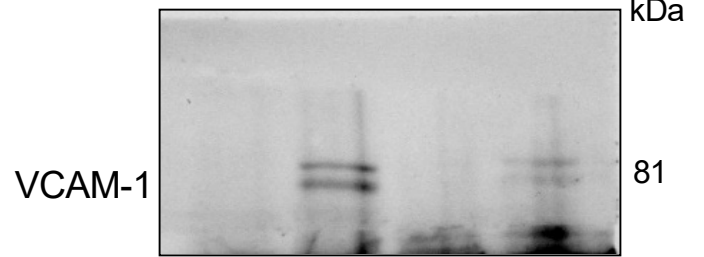


siControl siPoldip2
PBS TNF PBS TNF

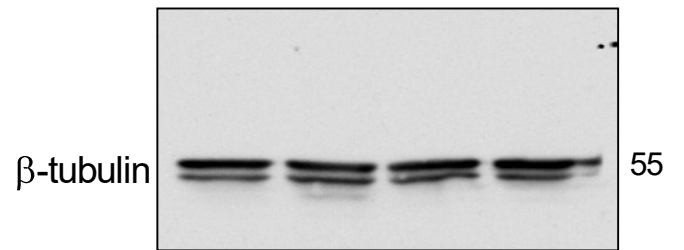


D

siControl siVCAM-1
PBS TNF PBS TNF

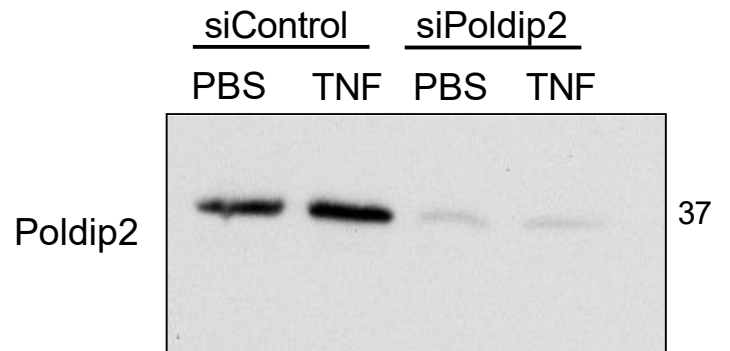
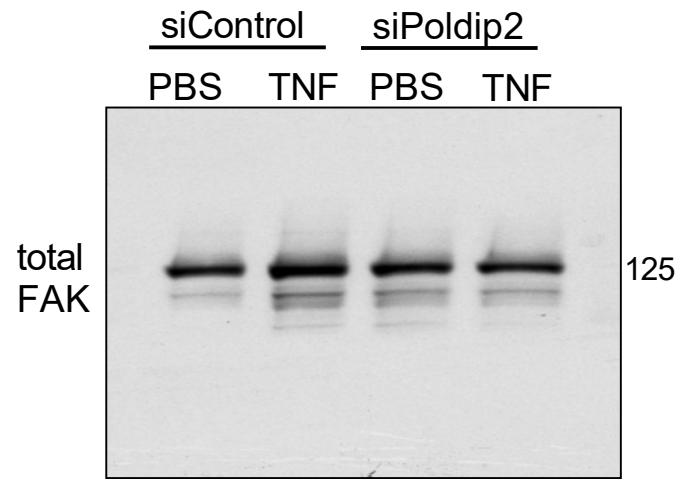
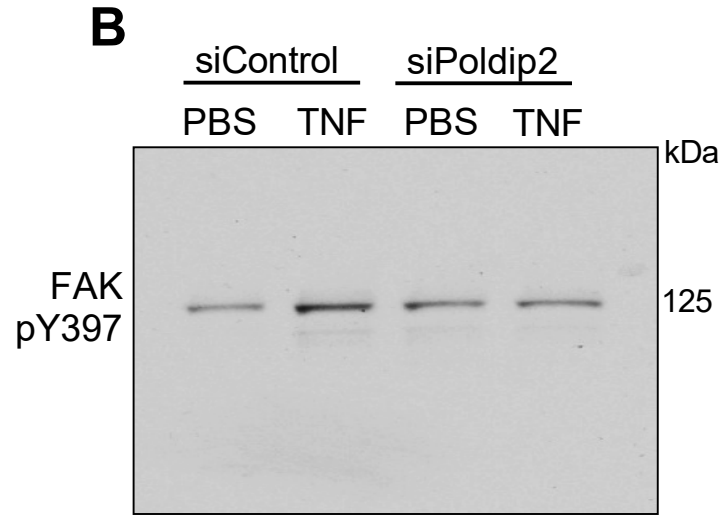
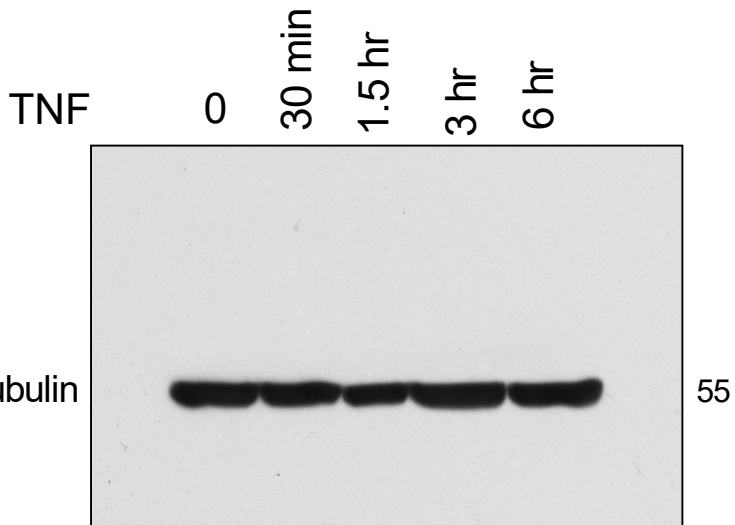
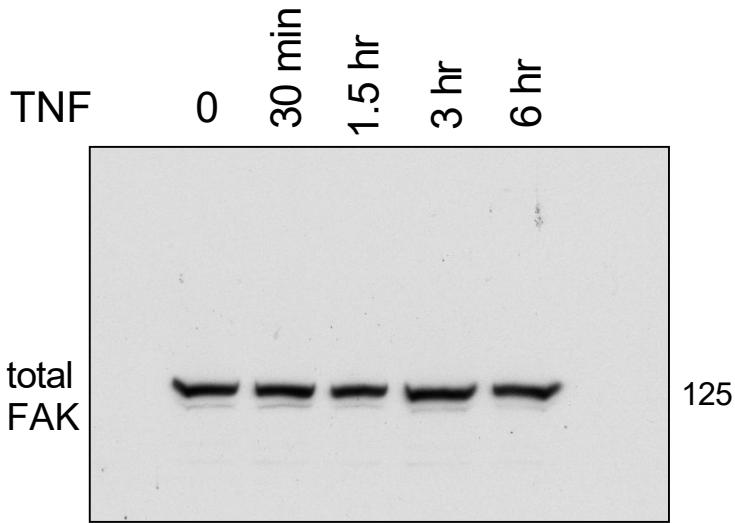
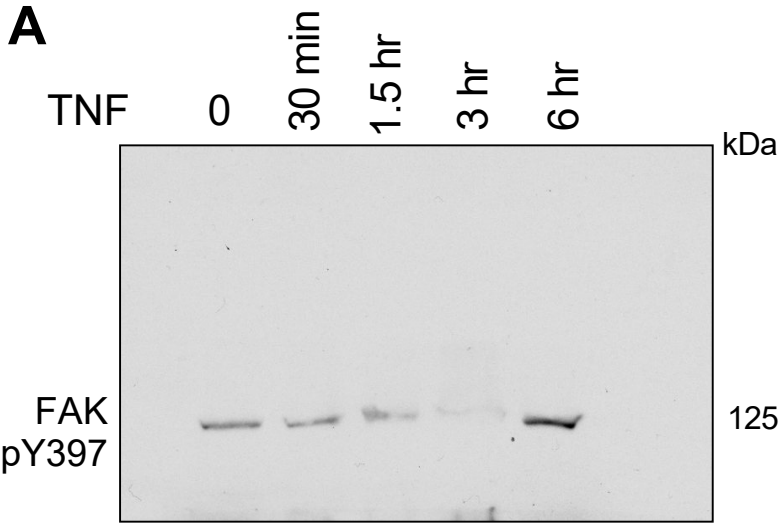


siControl siVCAM-1
PBS TNF PBS TNF



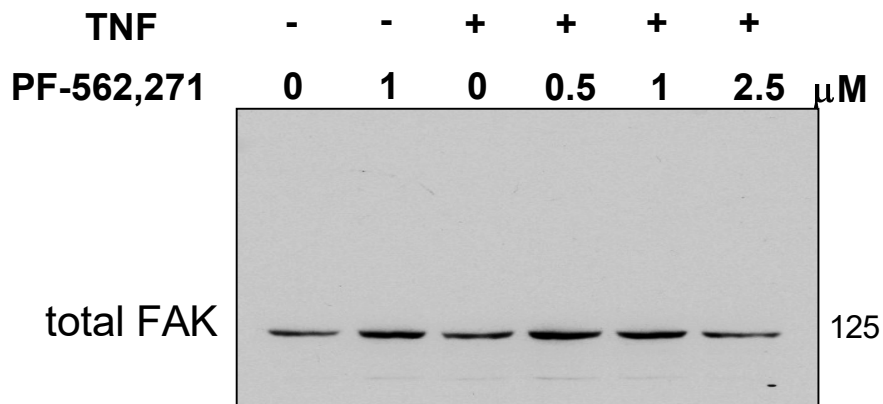
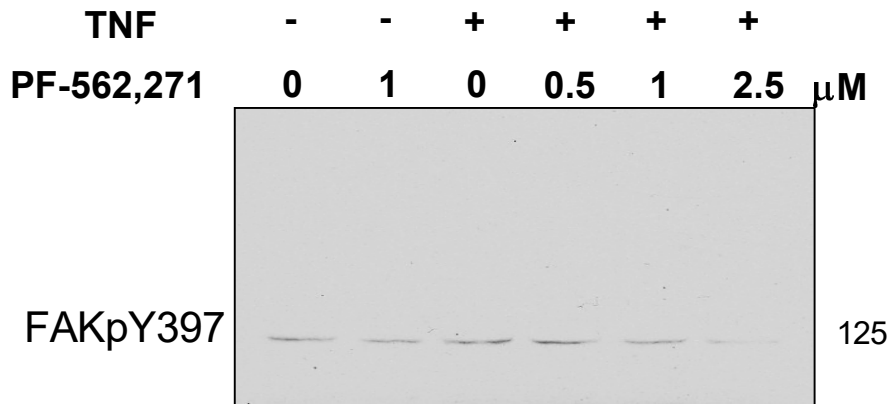
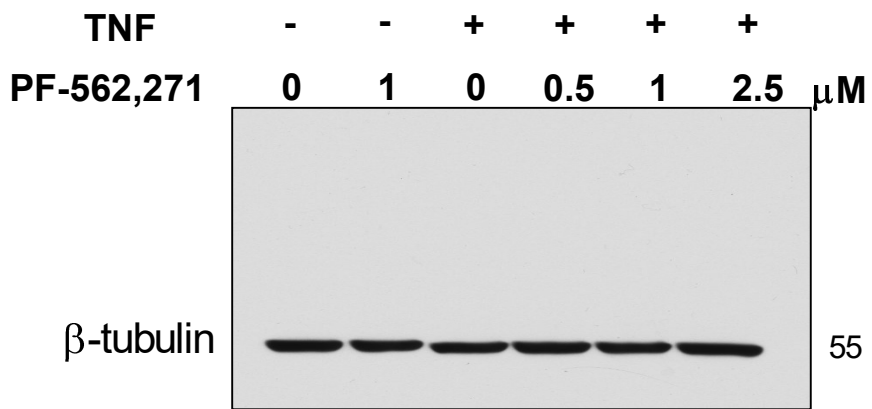
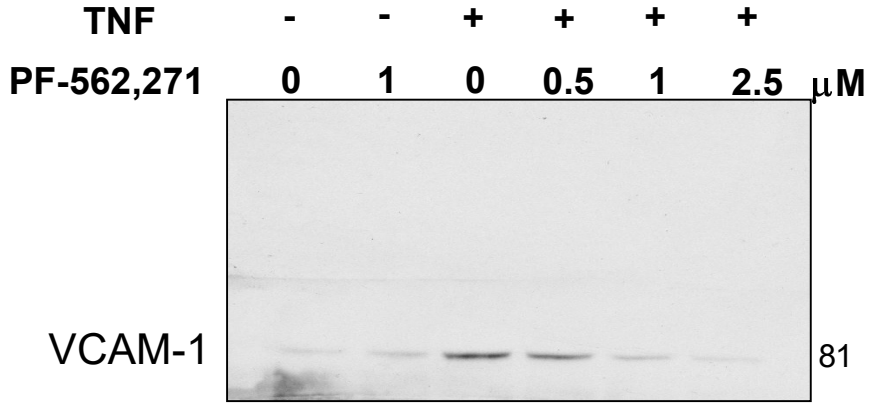
Supplemental Figure 5

(original western blots for Figure 4)



Supplemental Figure 6

(original western blots for Figure 5)



Supplemental Figure 7

(original western blots for Figure 6)

