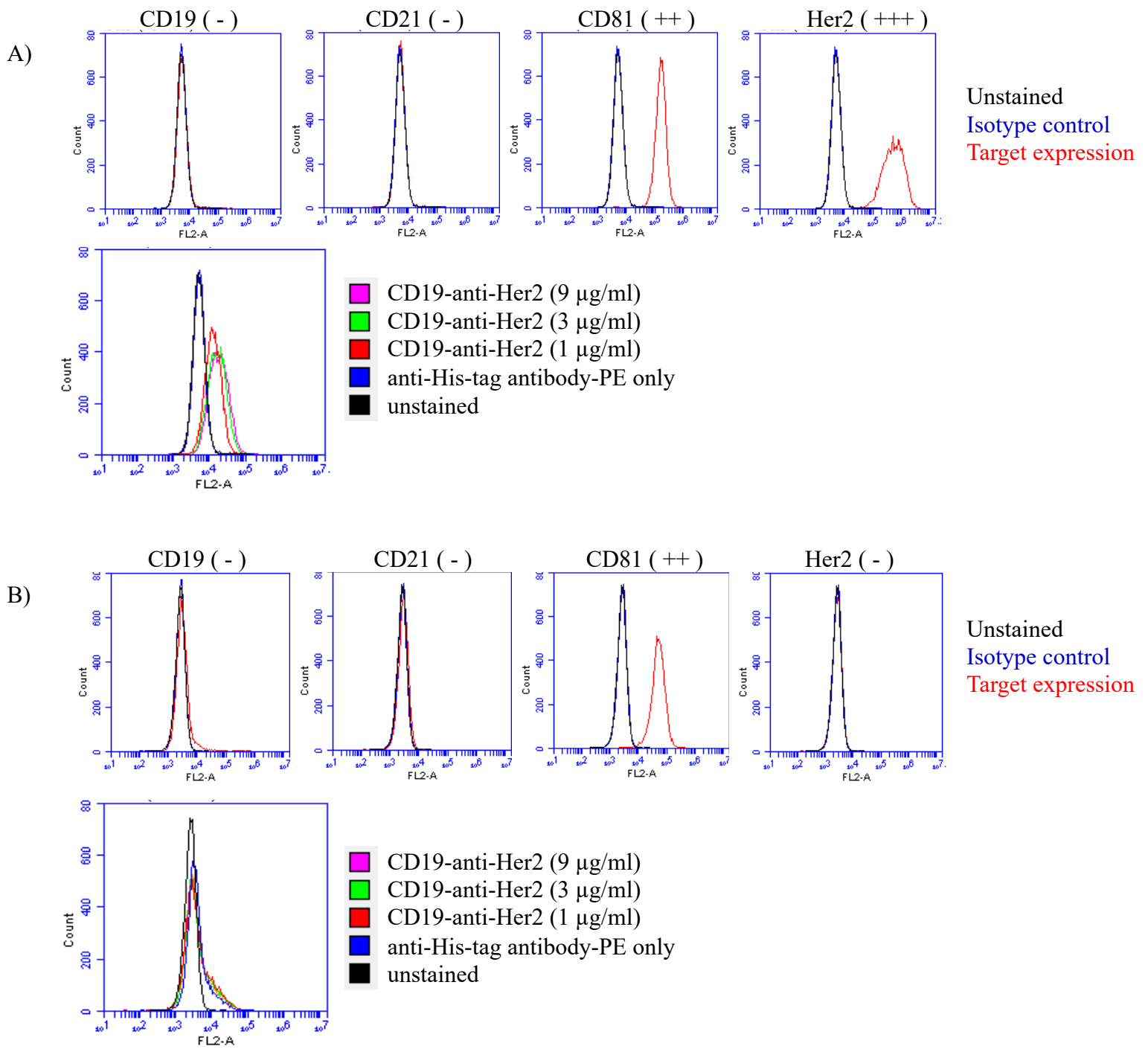
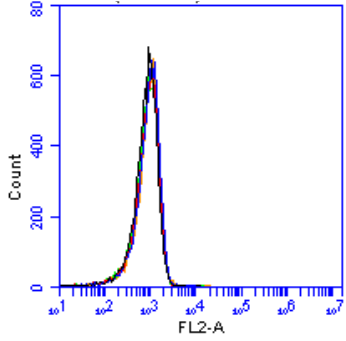
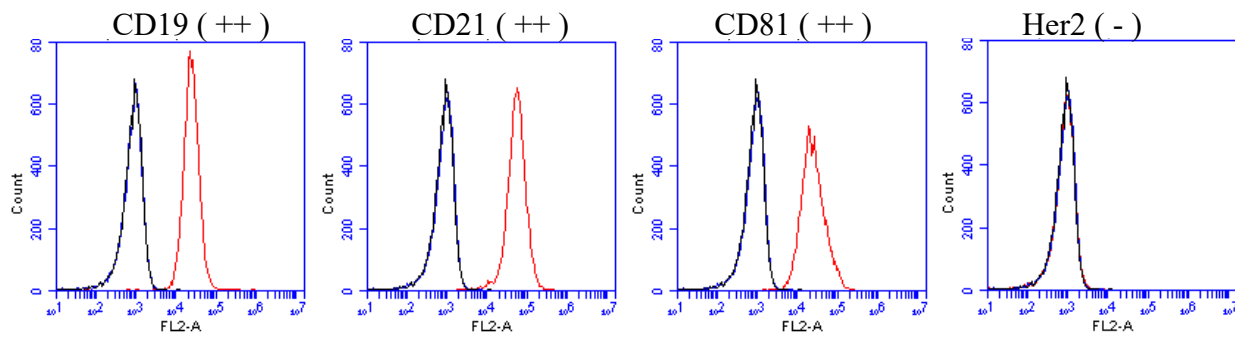


S7 Fig.

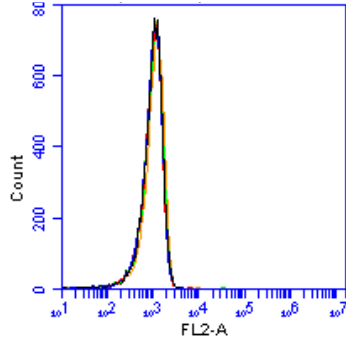
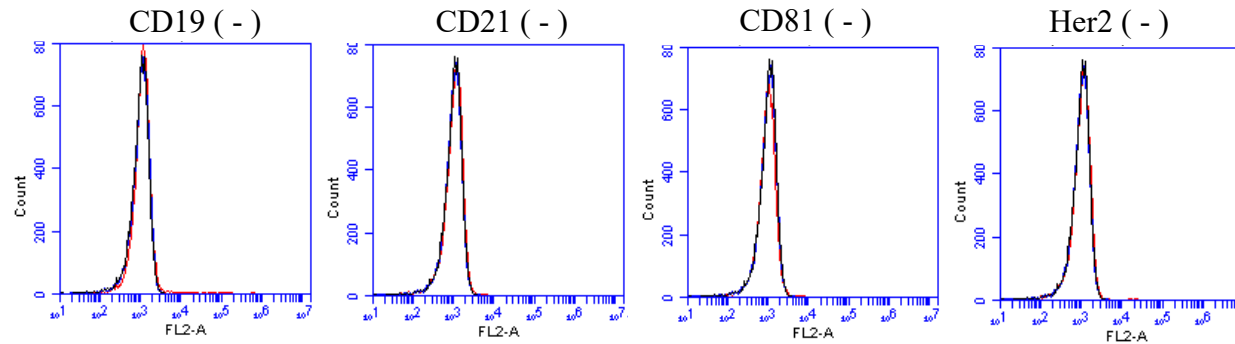


C)



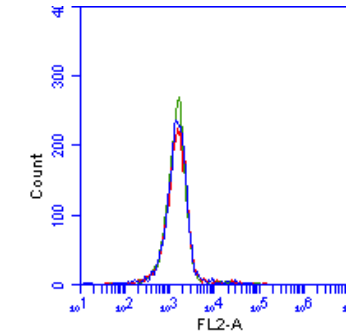
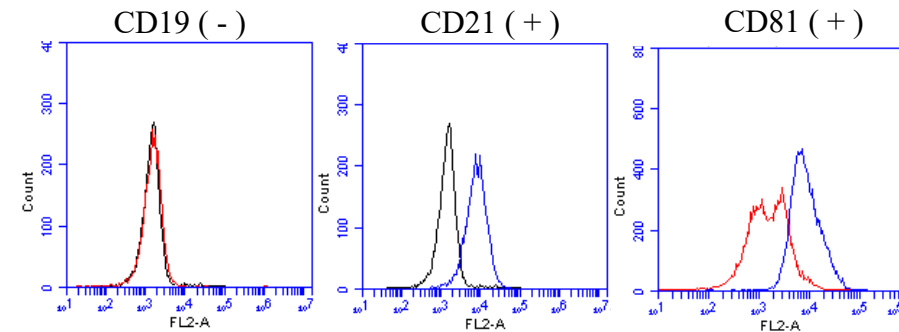
- CD19-anti-Her2 (9 $\mu\text{g/ml}$)
- CD19-anti-Her2 (3 $\mu\text{g/ml}$)
- CD19-anti-Her2 (1 $\mu\text{g/ml}$)
- anti-His-tag antibody-PE only
- unstained

D)



- CD19-anti-Her2 (9 $\mu\text{g/ml}$)
- CD19-anti-Her2 (3 $\mu\text{g/ml}$)
- CD19-anti-Her2 (1 $\mu\text{g/ml}$)
- anti-His-tag antibody-PE only
- unstained

E)



- anti-His-tag antibody-PE only
- CD19-anti-Her2 (1 $\mu\text{g/ml}$, #340)
- CD19-anti-Her2 (1 $\mu\text{g/ml}$, #42)

Unstained
Isotype control
Target expression

Unstained
Isotype control
Target expression

Unstained
Isotype control
Target expression