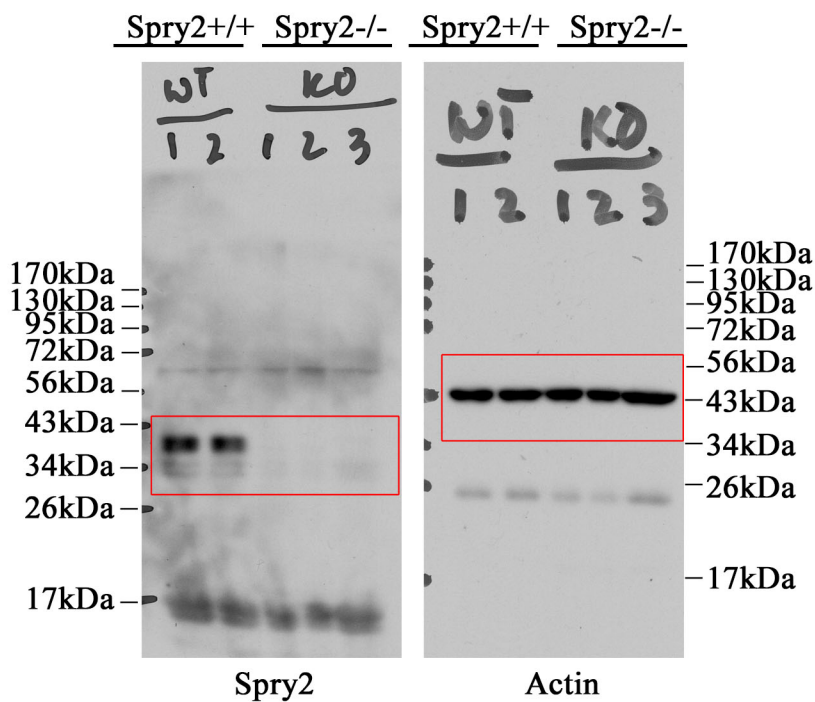
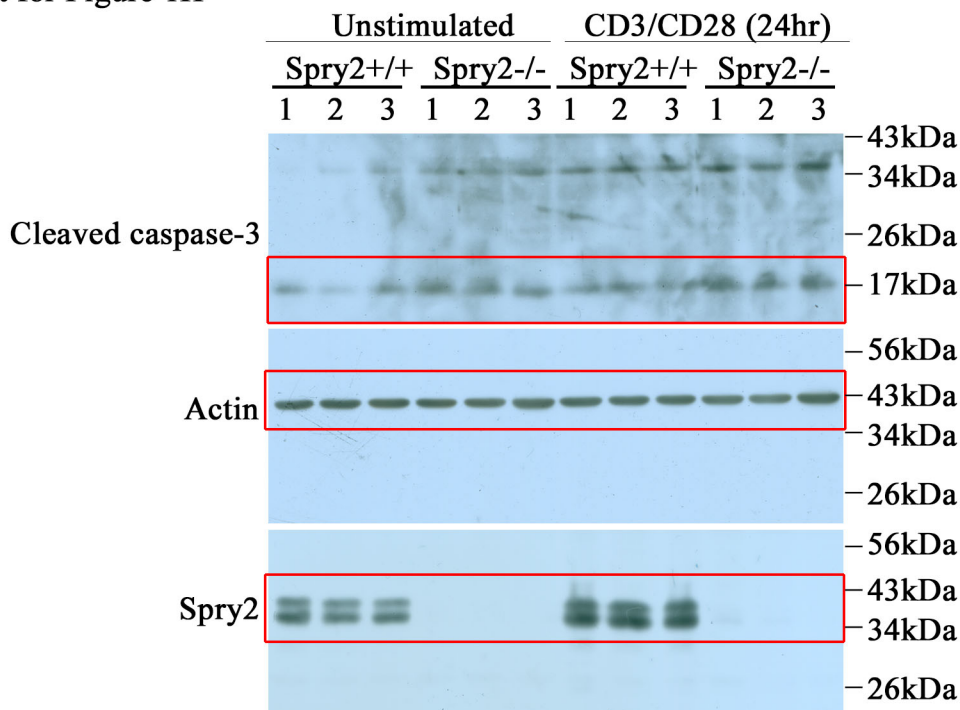


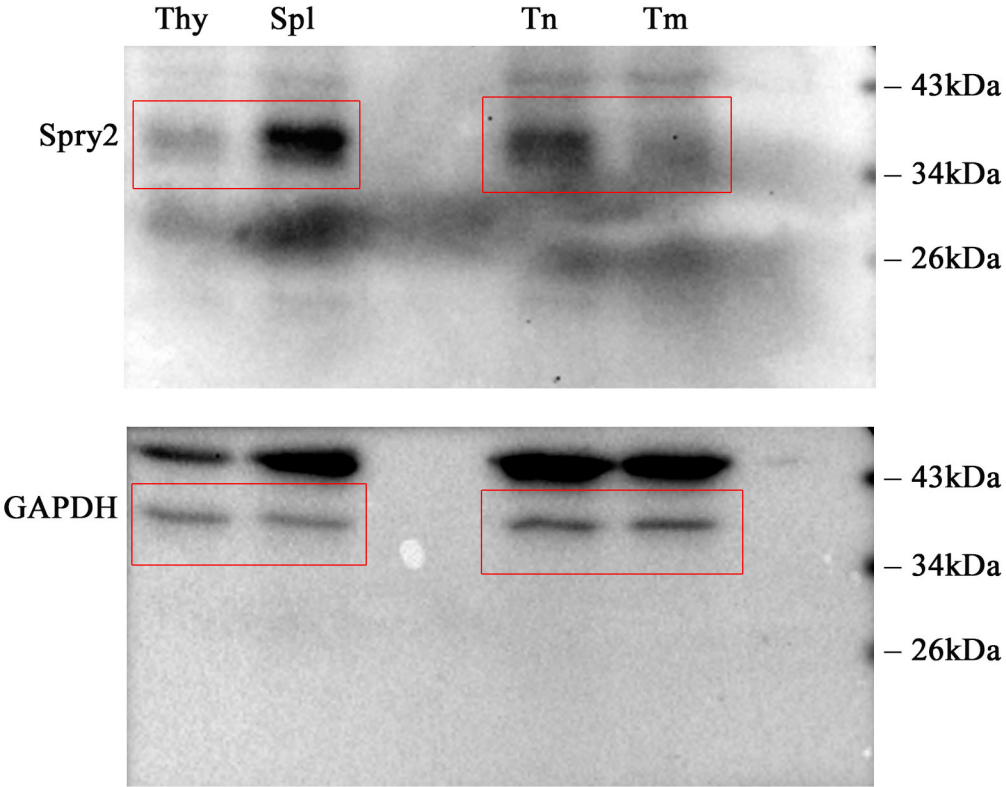
Full unedited Blot for Figure 1A



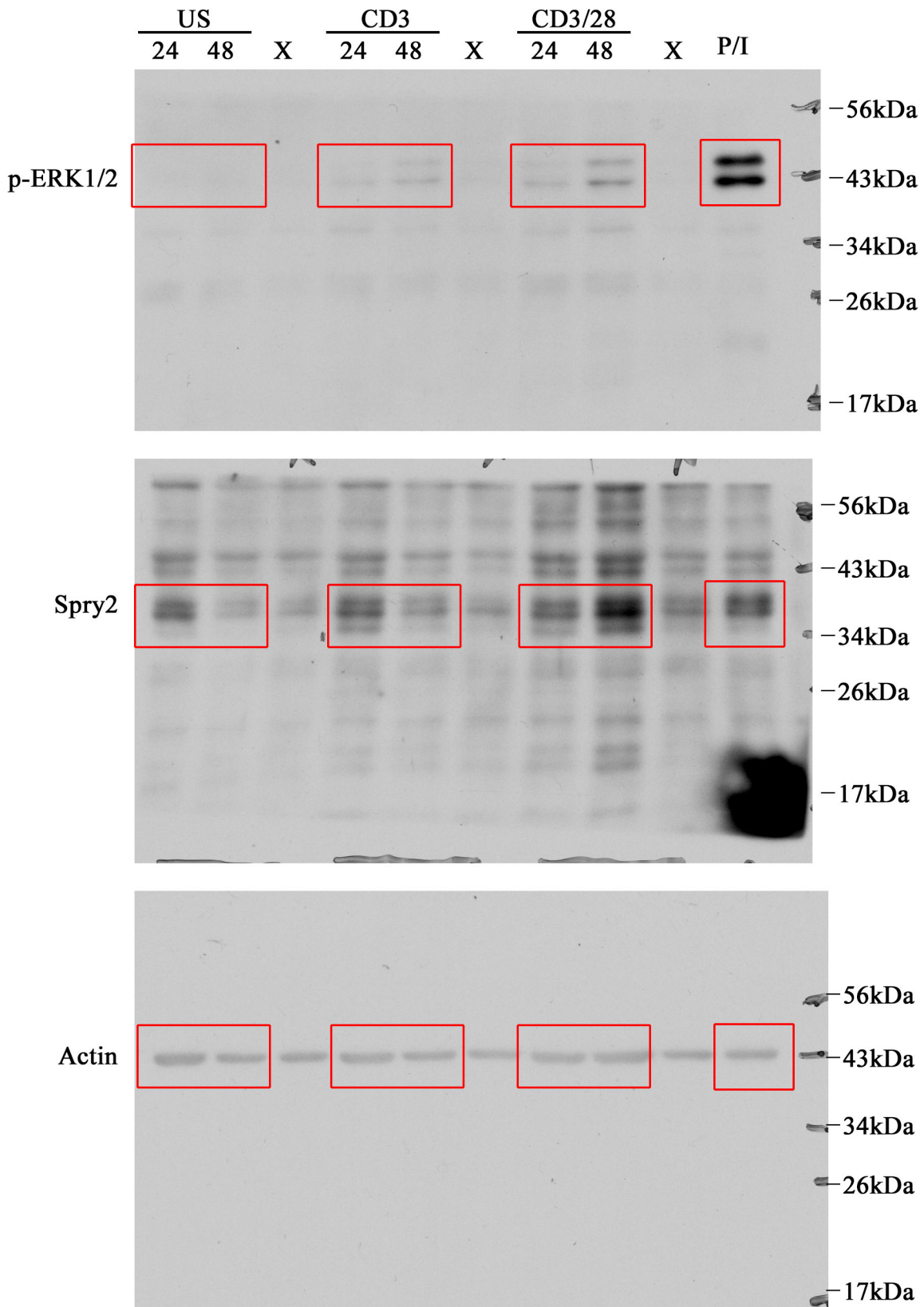
Full unedited Blot for Figure 1H



Full unedited Blot for Figure 2 A and 2 E

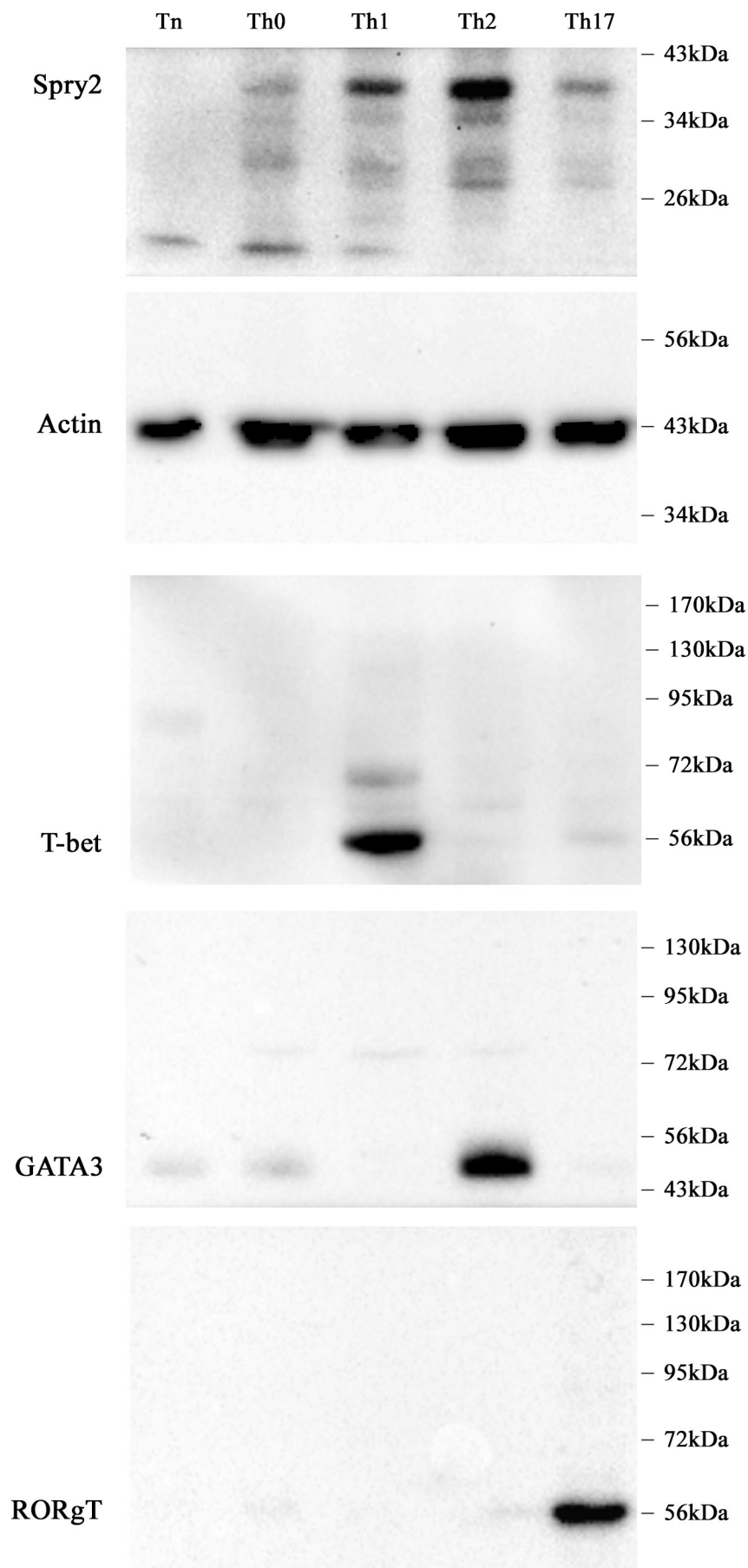


Full unedited Blot for Figure. 2 C

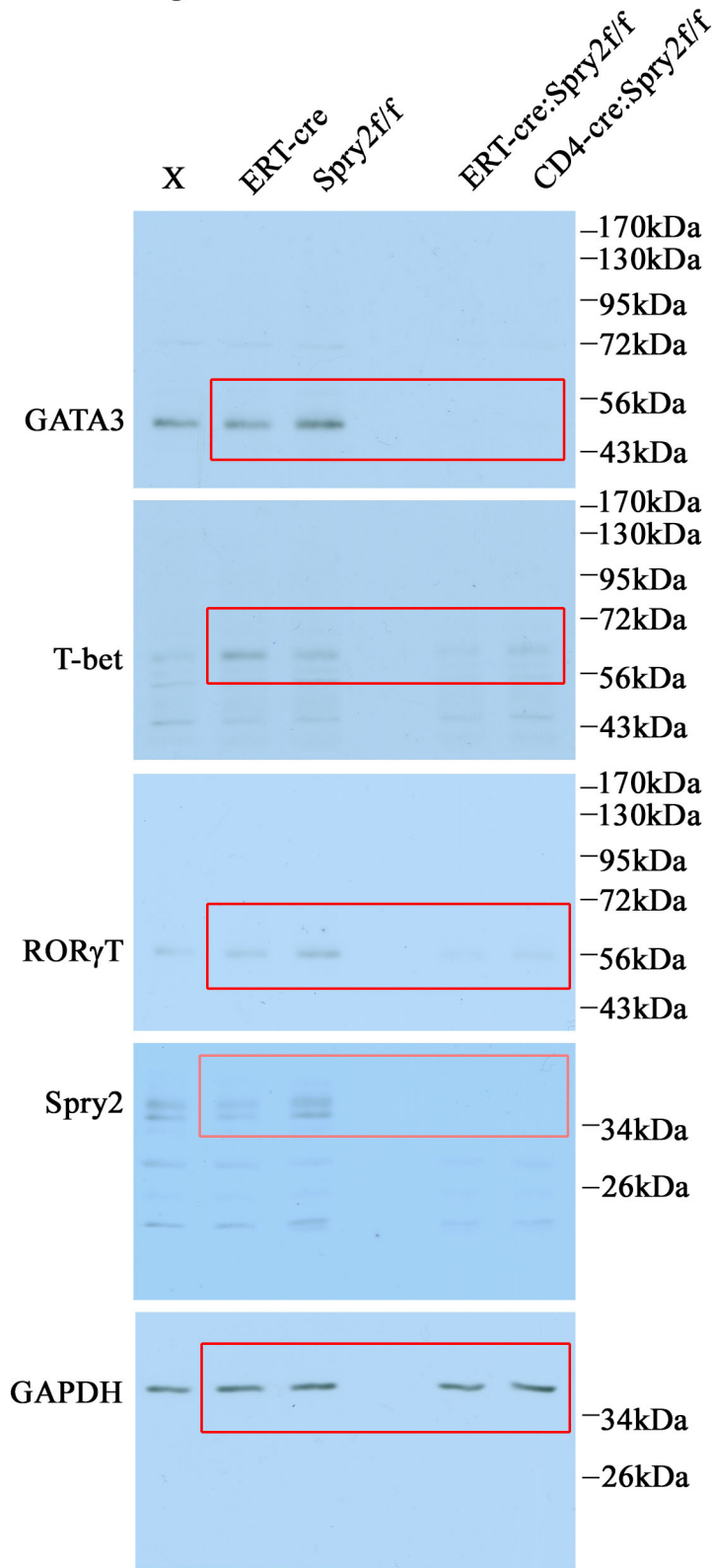


Full unedited Blot for Figure 2G

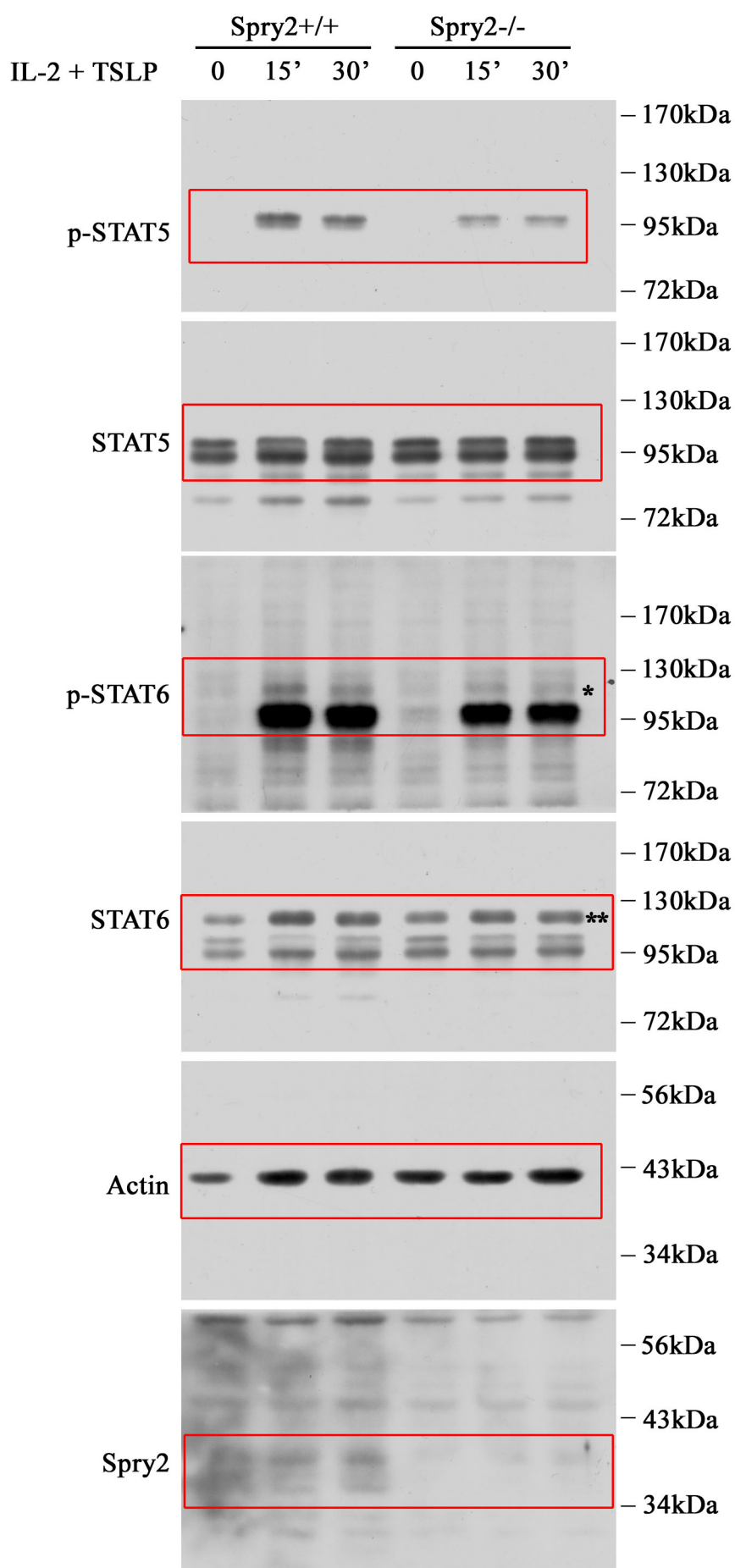
Blots here were probed with ECL reagent and images are acquired using BioRad ChemiDoc



Full unedited Blot for Figure 2 H



Full unedited Blot for Figure. 2 J

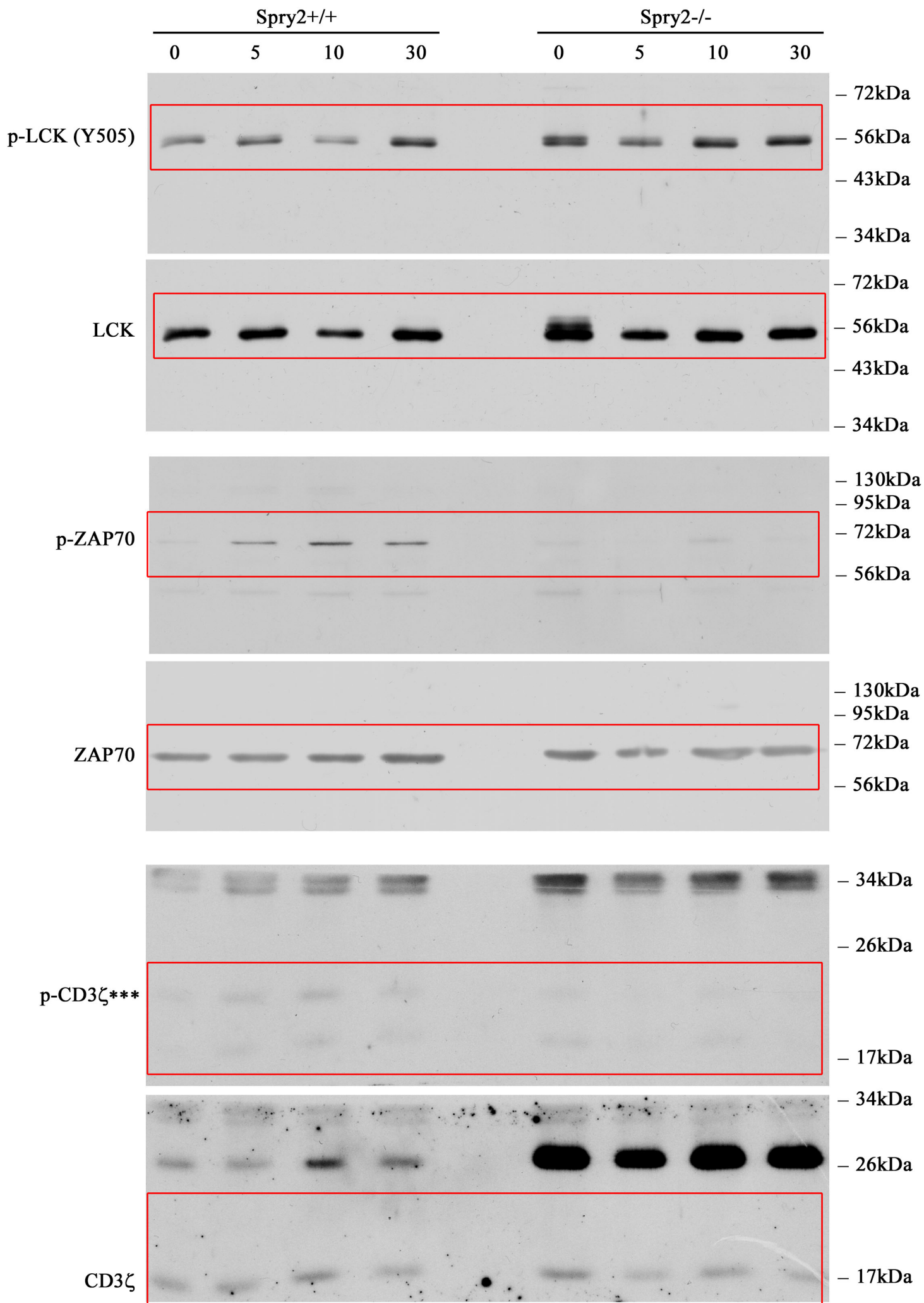




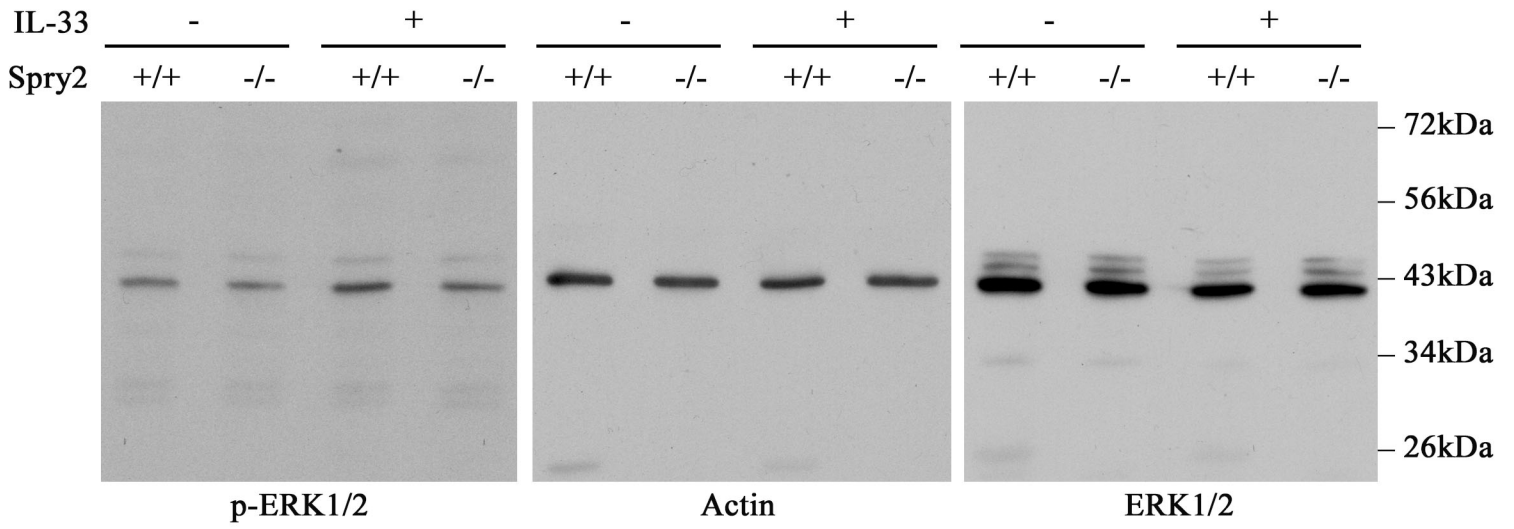
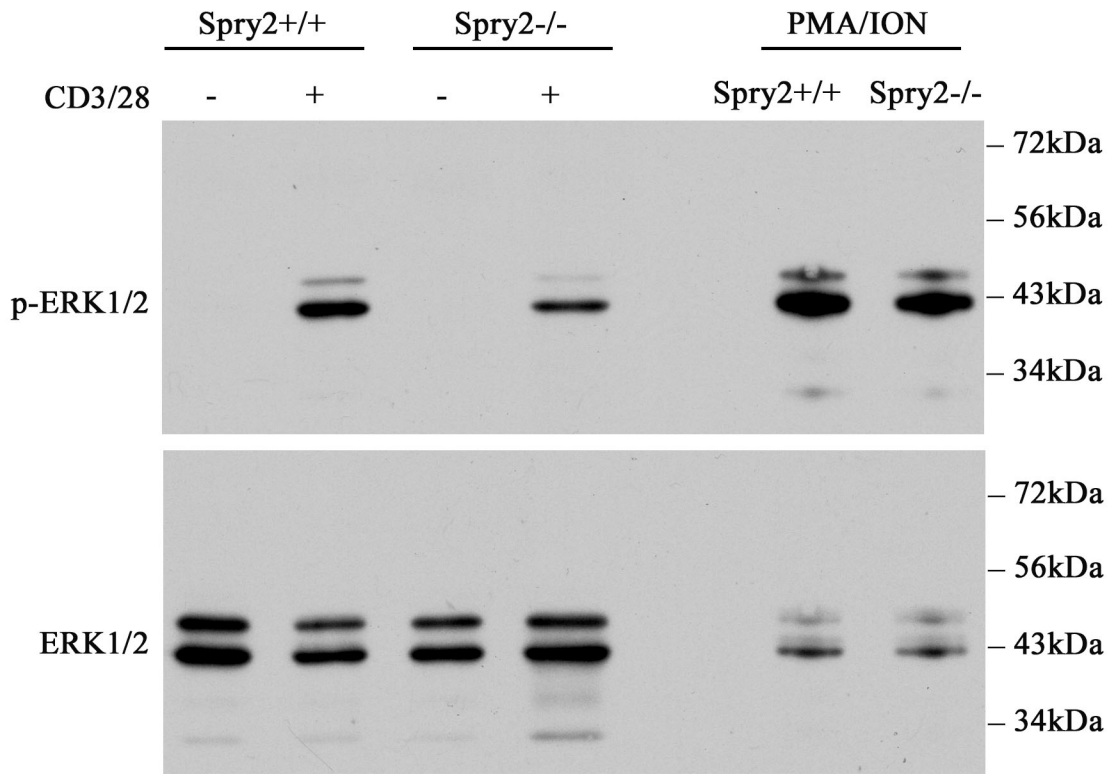




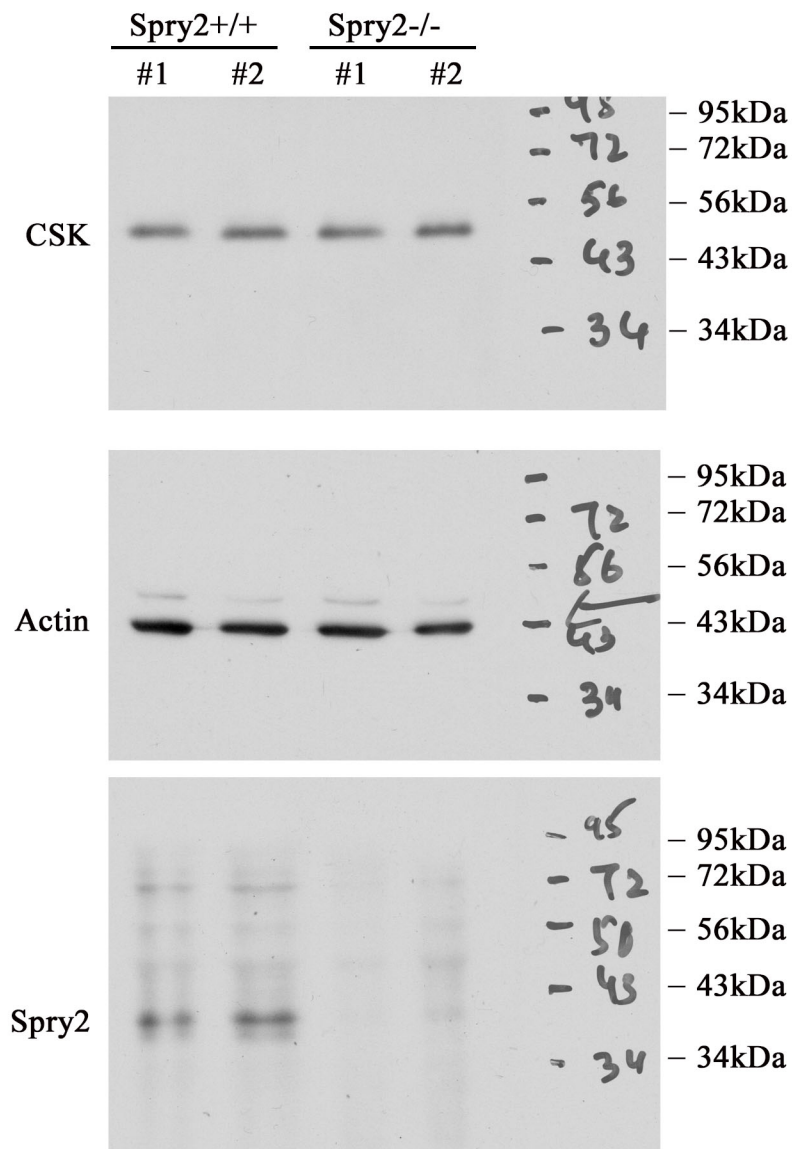
Full unedited Blot for Figure 6B (Cont'd)



Full unedited Blot for Figure 6 F & G



Full unedited Blot for Figure 7 C



Full unedited Blot for Figure 7 D & E

Blots here were probed with ECL reagent and images are acquired using BioRad ChemiDoc

Figure 7 D

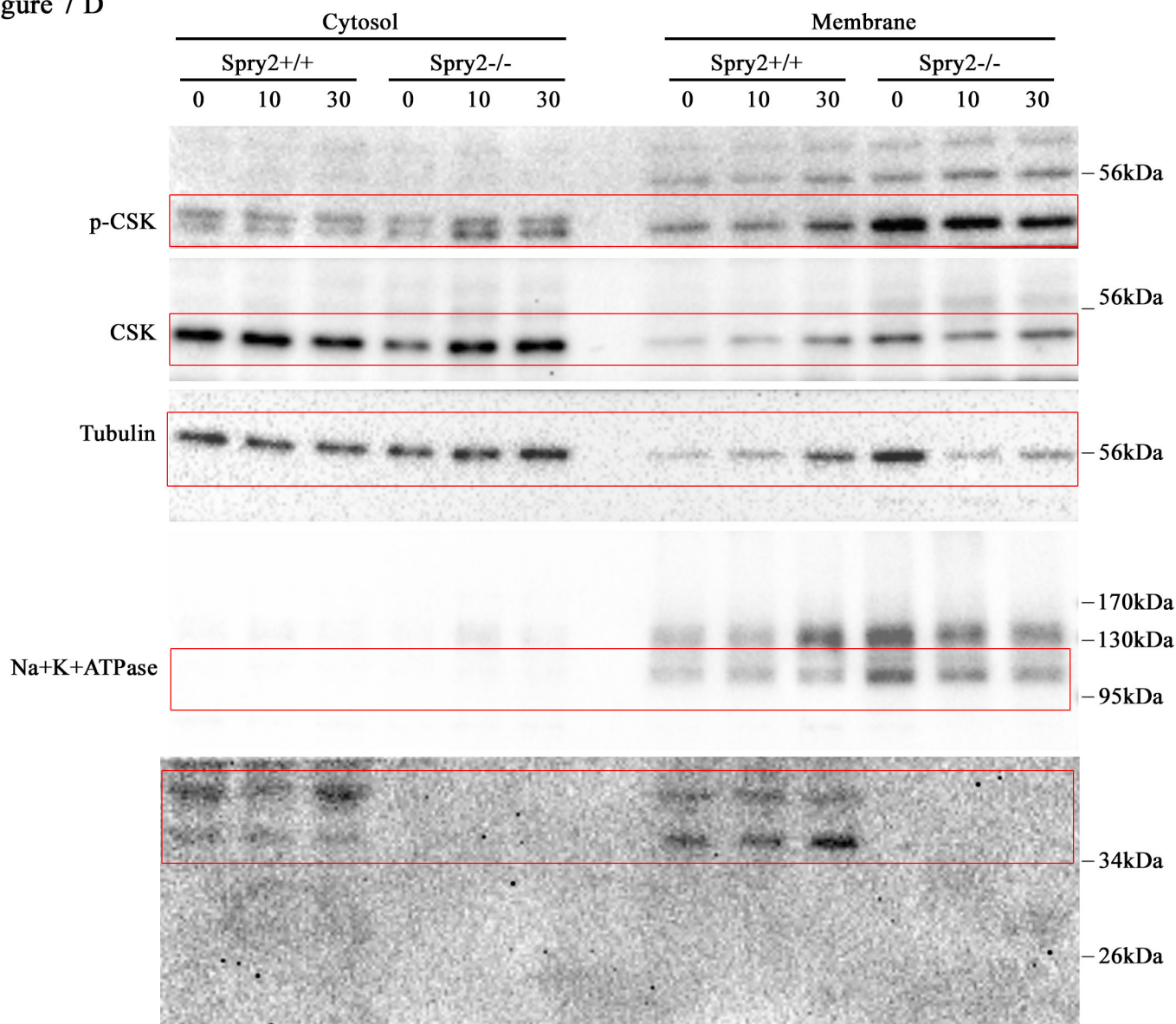
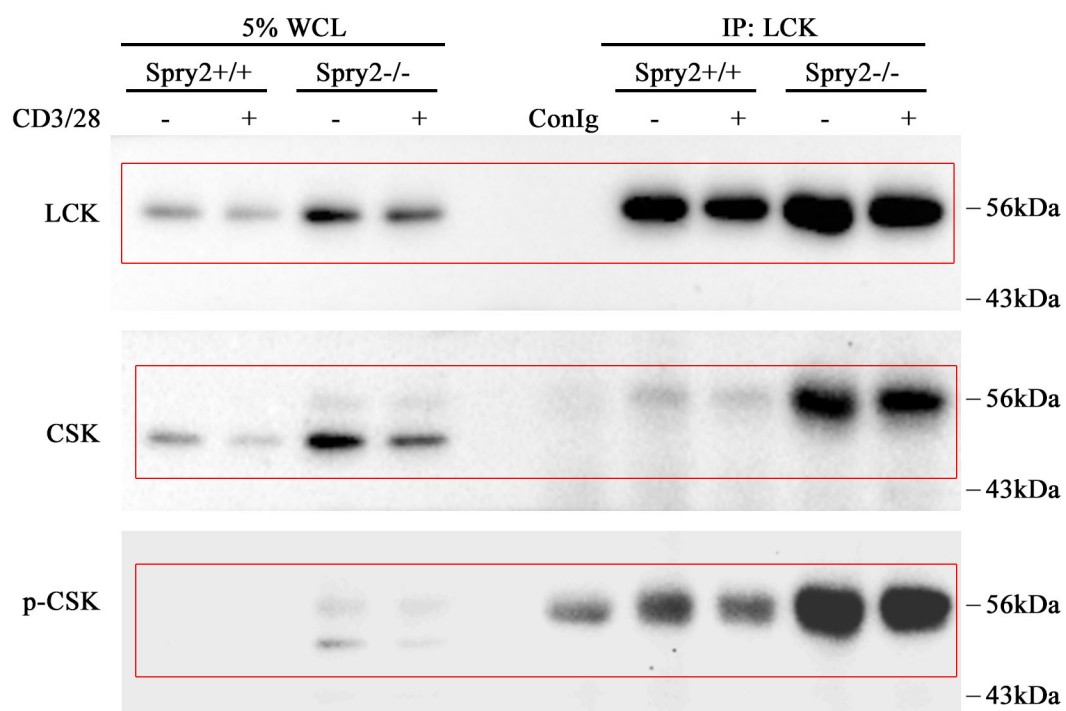
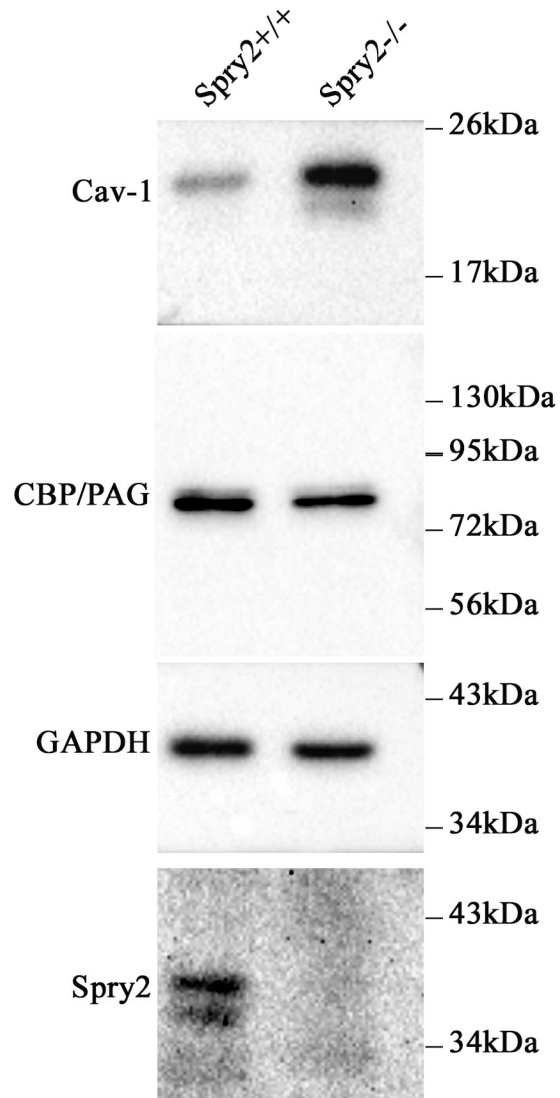


Figure 7 E



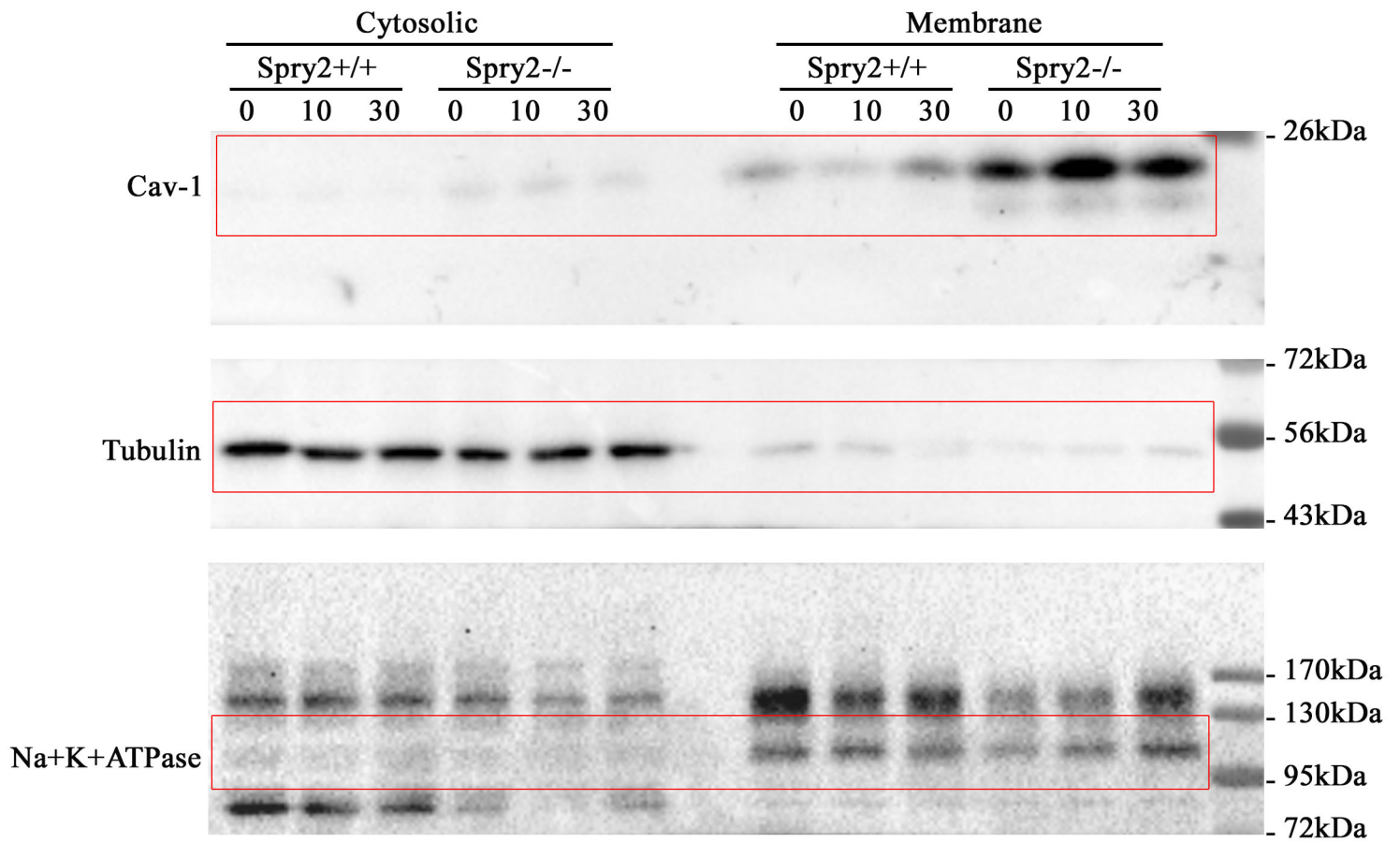
Full unedited Blot for Figure 8 A

Blots here were probed with ECL reagent and images are aquired using BioRad ChemiDoc

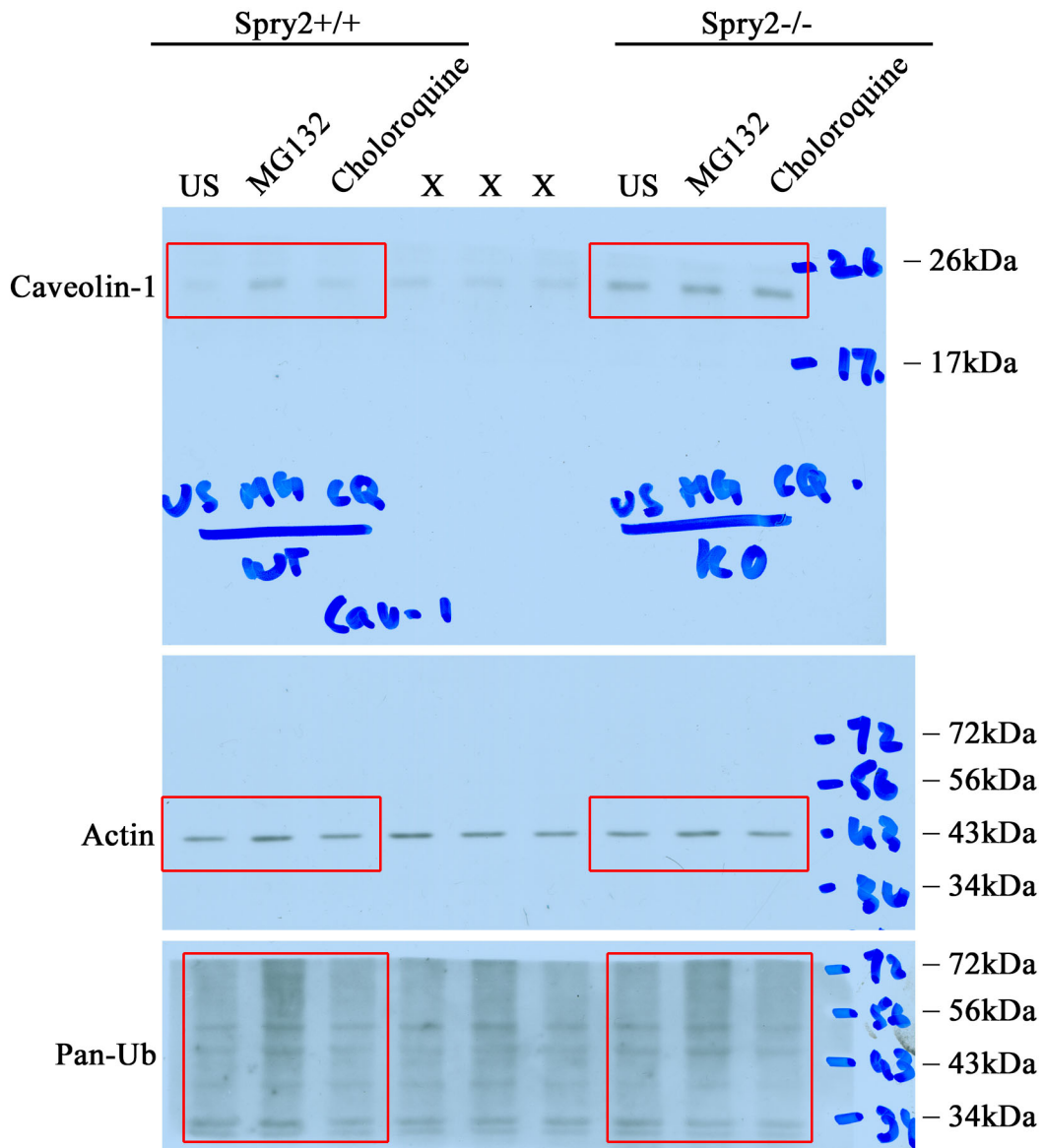


Full unedited Blot for Figure 8 B

Blots here were probed with ECL reagent and images are aquired using BioRad ChemiDoc

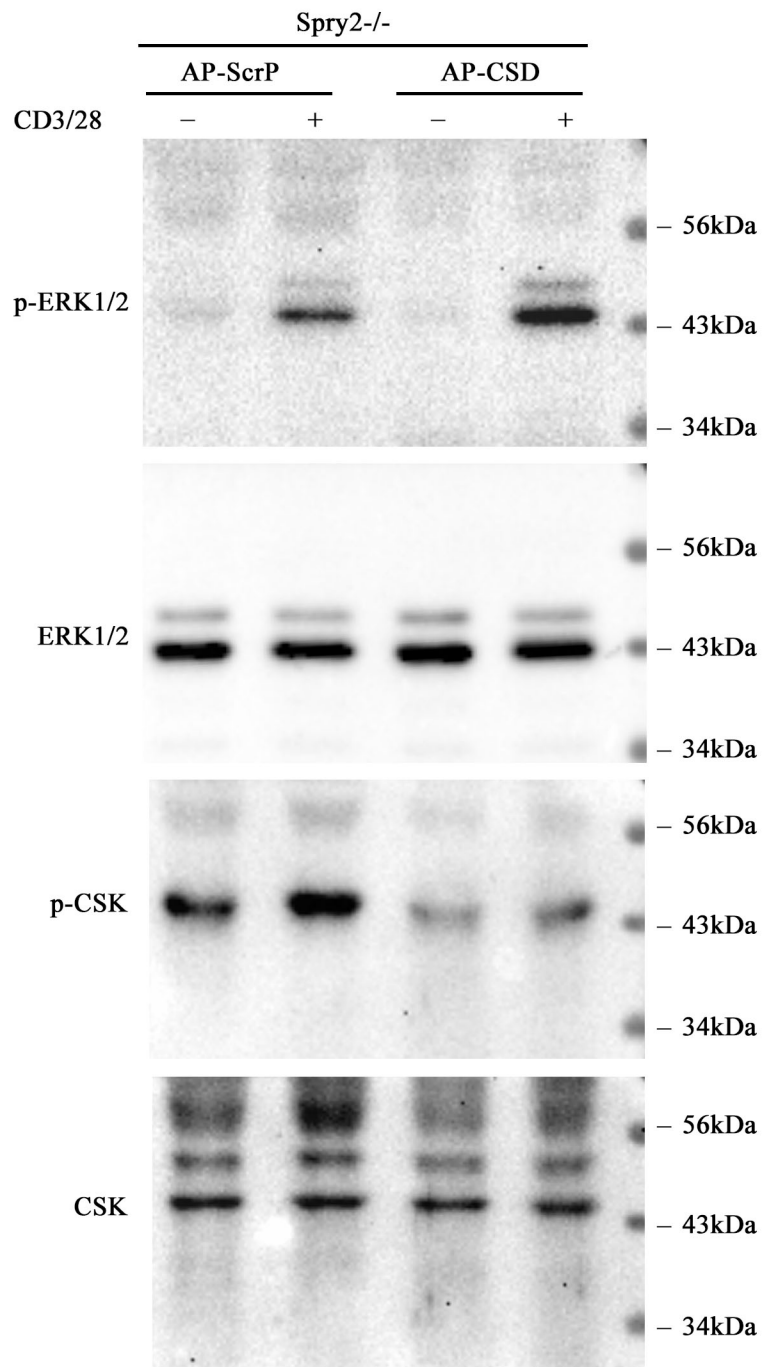


Full unedited Blot for Figure 8 G

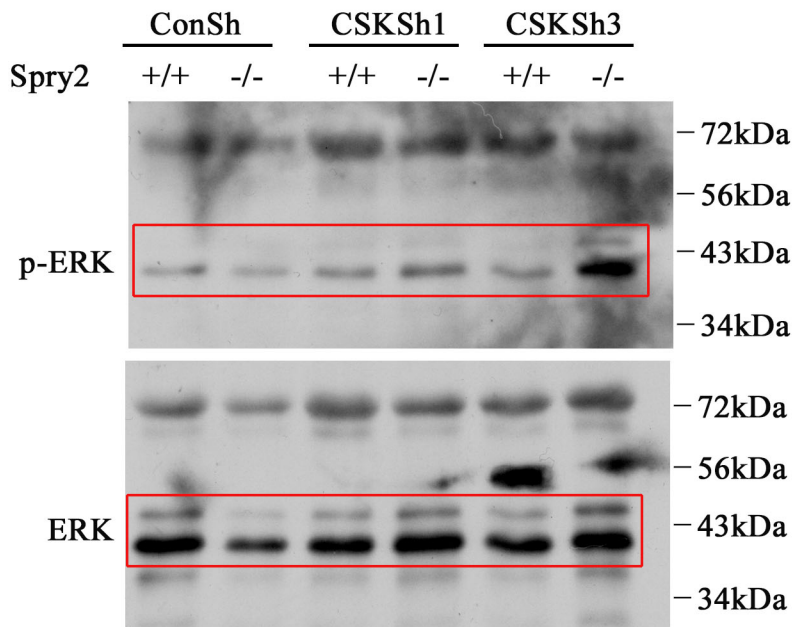
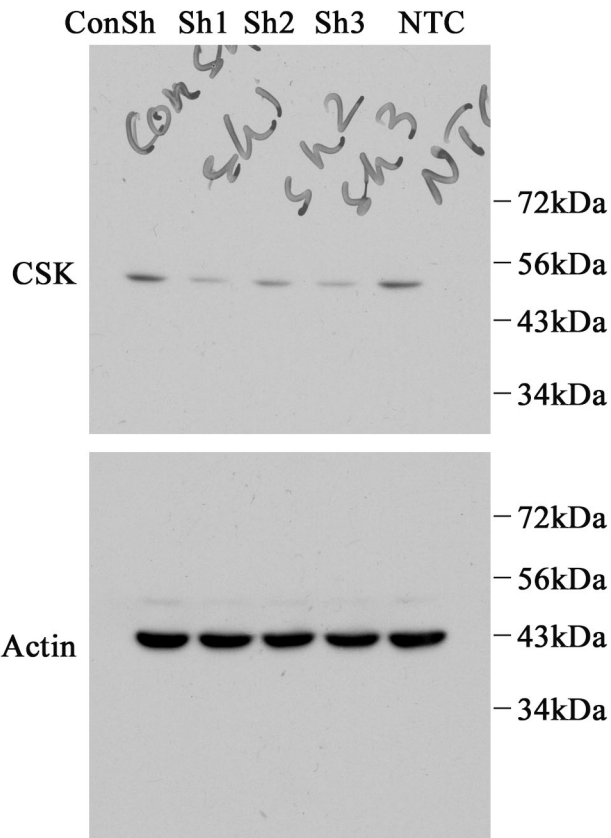


Full unedited Blot for Figure 8 H

Blots here were probed with ECL reagent and images are aquired using BioRad ChemiDoc







Full unedited Blot for Supplementary Figure 4 B

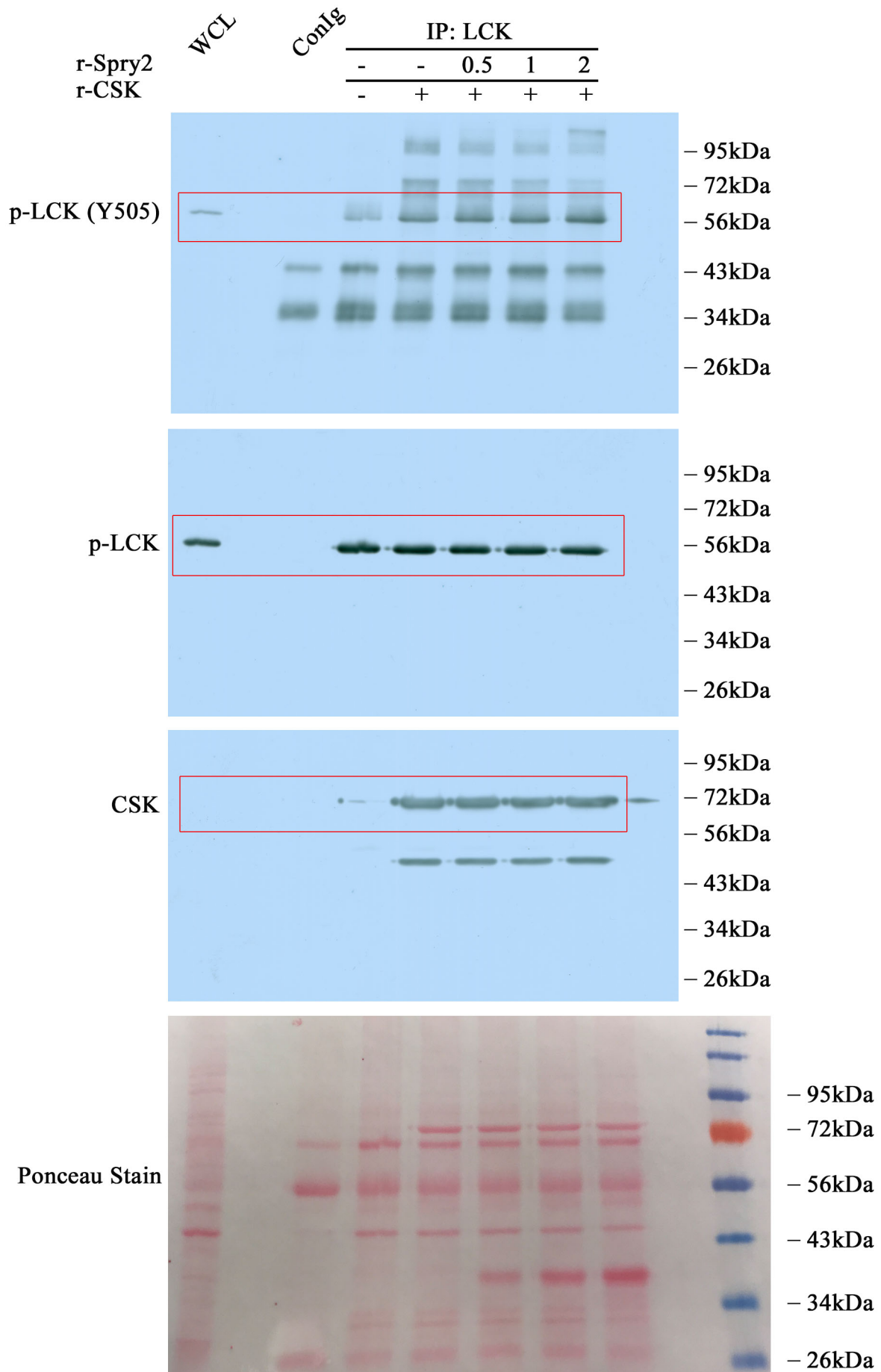
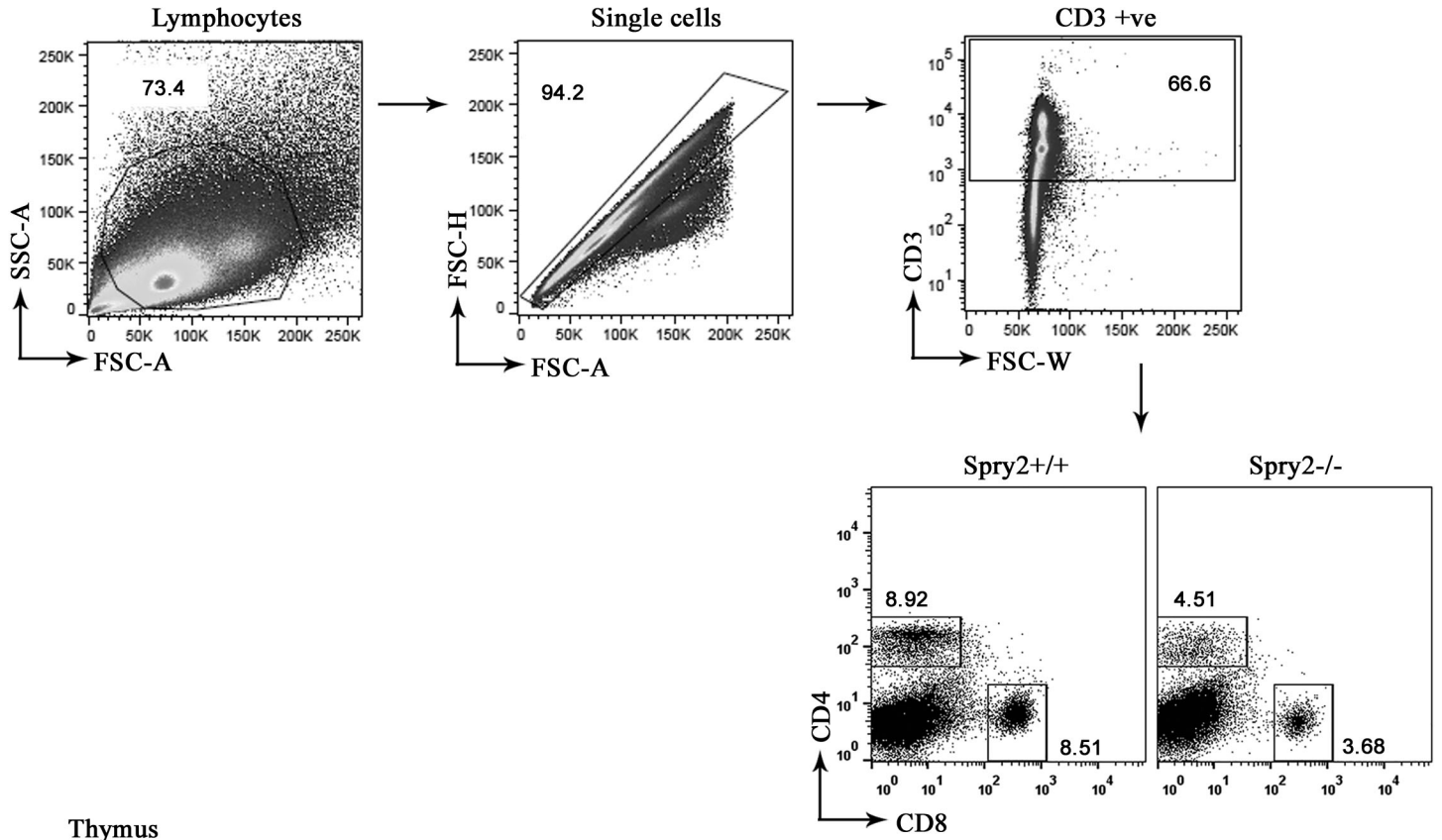


Fig 1C & E Gating strategy

Spleen



Thymus

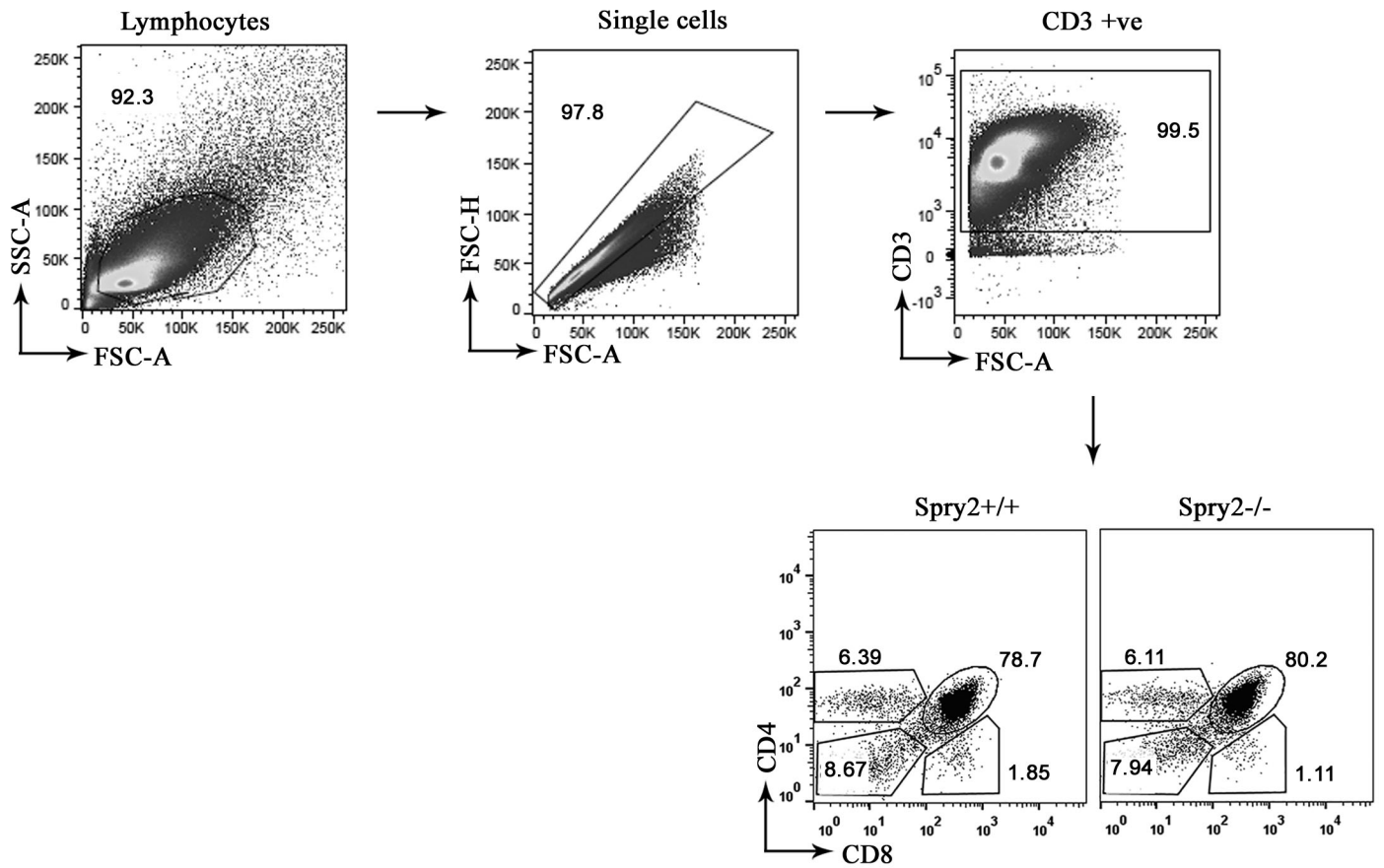
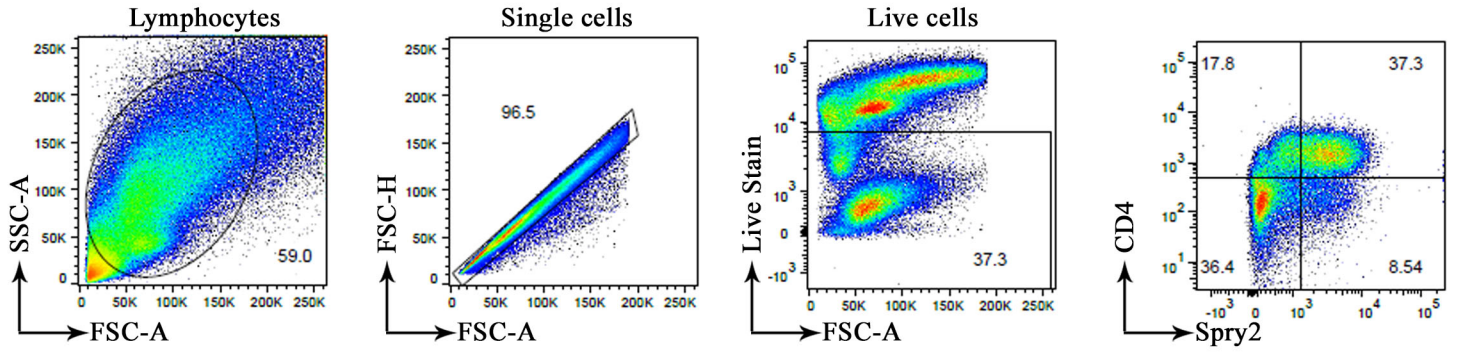


Fig 5A Gating strategy for CD4 T cells from Blood PBMCs and BAL

Blood PBMCs



BAL

