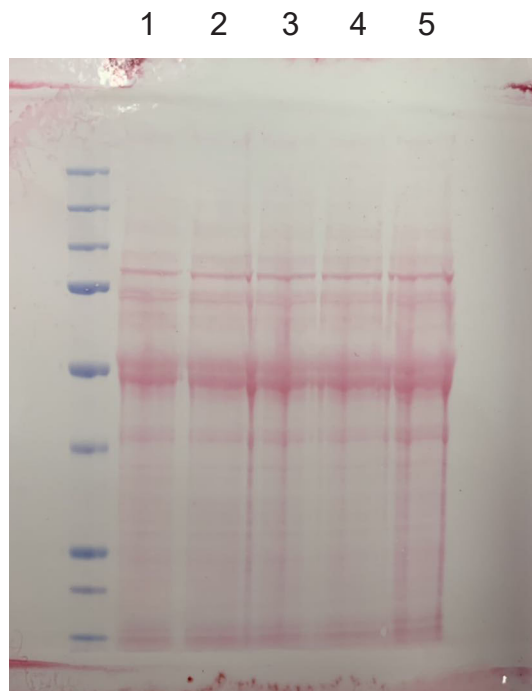
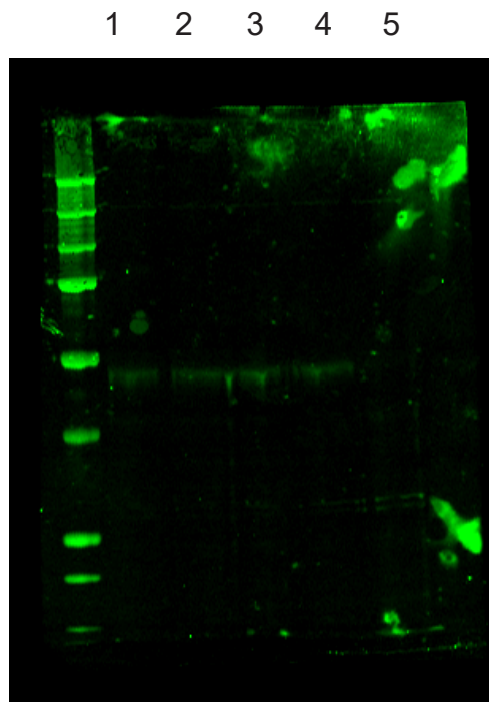


a. Fig 1 B, C



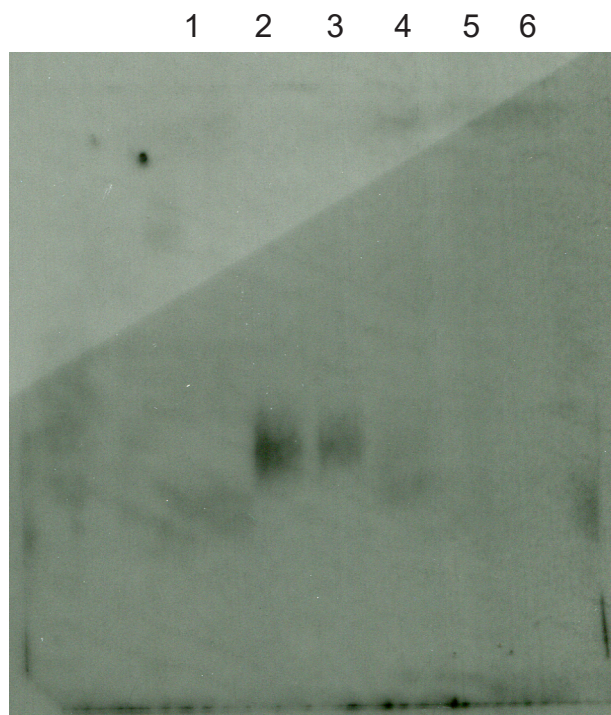
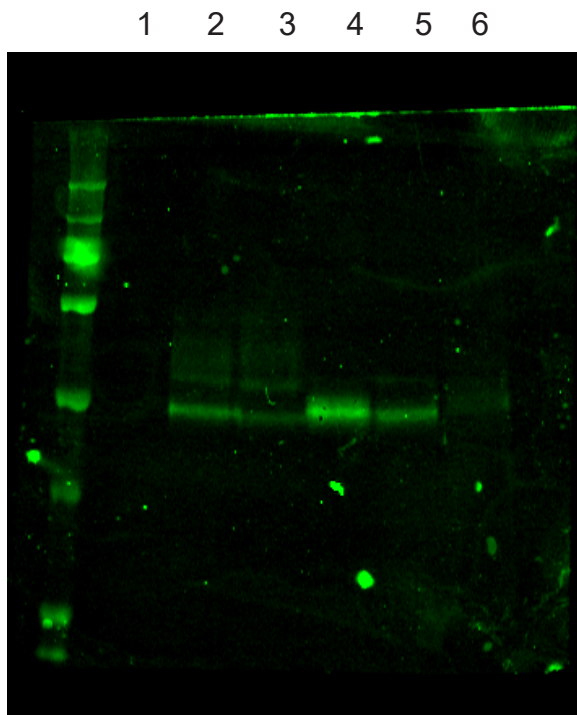
Ponceau staining



Western blotting

1. TbGPI3-3Myc clone 1
2. TbGPI3-3Myc clone 2
3. TbGPI3-3Myc clone 3
4. TbGPI3-3Myc clone 4
5. Wild type control

b. Fig 2 A, B



1. Wild type cells lysed with 1% TX-100 following IP with Myc-Trap beads
2. TbGPI3-3Myc cells lysed with 0.5% digitonin following IP with Myc-Trap beads
3. TbGPI3-3Myc cells lysed with 0.1% digitonin following IP with Myc-Trap beads
4. TbGPI3-3Myc cells lysed with 1% TX-100 following IP with Myc-Trap beads
5. TbGPI3-3Myc cells lysed with 1% NOG following IP with Myc-Trap beads
6. TbGPI3-3Myc cells lysed with 1% DM following IP with Myc-Trap beads