

Supplementary Materials

Experimental modulation of Interleukin 1 shows its key role in chronic kidney disease progression and anemia.

Inbar Bandach, Yael Segev, Daniel Landau

Table of Contents

Methods	2-4
Supplemental Table 1. Summary of experiments	2
Supplemental Table 2. Primers used for real-time PCR analysis	3-4
Results	5-12
Supplementary Figure S1. Summary of experiments and main results	5
Supplementary Figure S2. Inflammation phenotype	6
Supplementary Figure S3. Adenine crystal	7
Supplementary Figure S4. Body weight gain (g) of mice on regular (C) or adenine diet, injected with saline (CKD) or an anti-IL1 monoclonal antibody (CKD-Ab).....	8
Supplementary Figure S5. Full-length original western blots for STAT 3 and p-STAT 3 referred to in Figure 2I.....	9
Supplementary Figure S6. Full-length original western blots for HIF-2 α referred to in Figure 4B.....	10
Supplementary Figure S7. Full-length original western blots for STAT 3 and p-STAT 3 referred to in Figure 7H.....	11
Supplementary Figure S8. Full-length original western blots for HIF-2 α referred to in Figure 9B.....	12

Supplemental Table 1. Summary of experiments

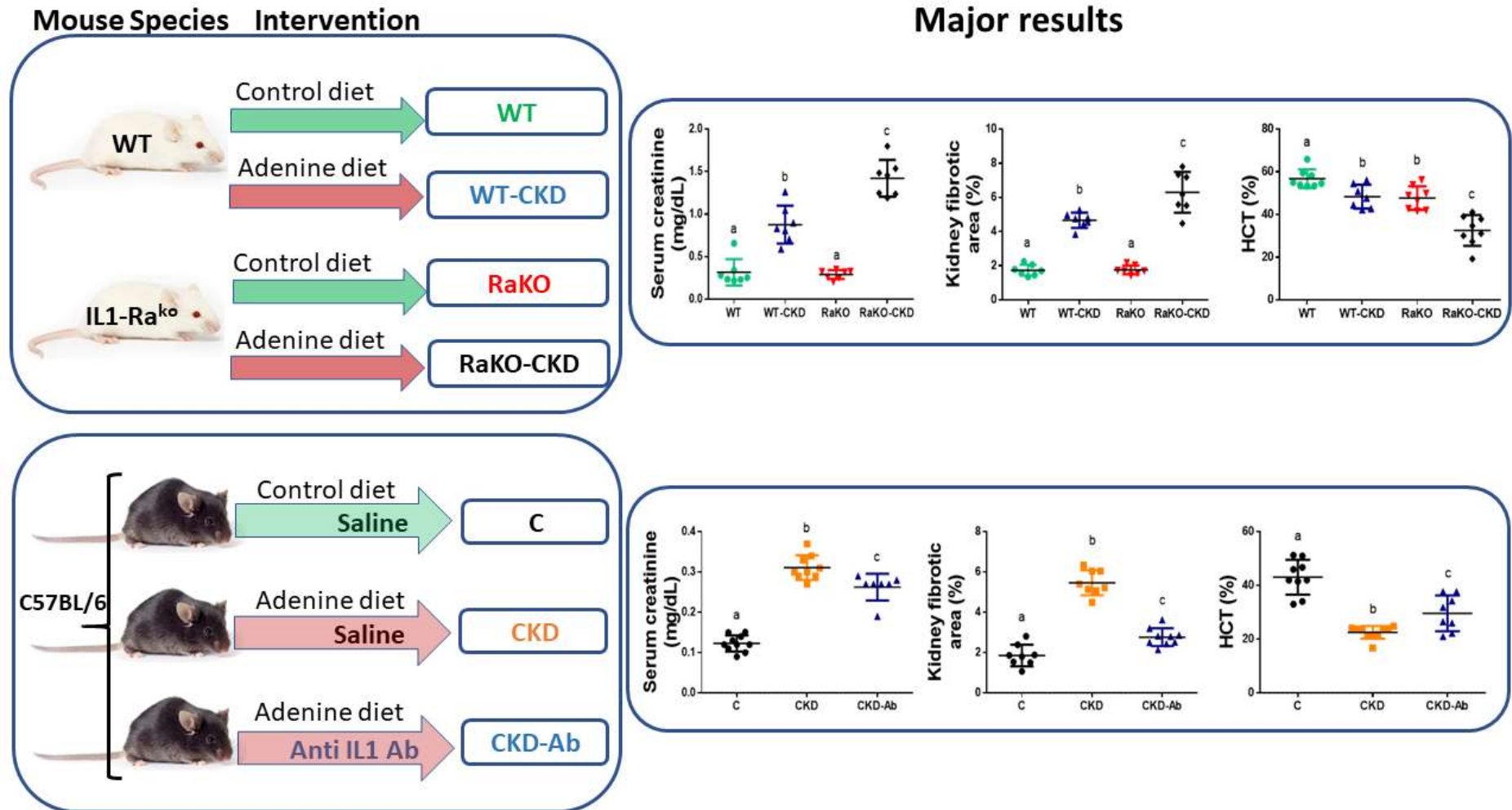
Exp. No.	Group	Animals	Diet	Treatment	Sample size	Figure numbers
#1	WT	BALB/c WT mice	Control	-	n=6-10/ group	Figures 1-3 and Supplementary Figure S1
	WT-CKD	BALB/c WT mice	Adenine	-		
	RaKO	IL-1 receptor- antagonist knockout mice on BALB/c background	Control	-		
	RaKO- CKD	IL-1 receptor- antagonist knockout mice on BALB/c background	Adenine	-		
#2	C	C57BL/6 mice	Control	Saline	n=6-10/ group	Figures 4-8 and Supplementary Figure S2
	CKD	C57BL/6 mice	Adenine	Saline		
	CKD-Ab	C57BL/6 mice	Adenine	anti-IL-1 β antibody (P2D7KK)		

Supplemental Table 2. Primers used for real-time PCR analysis

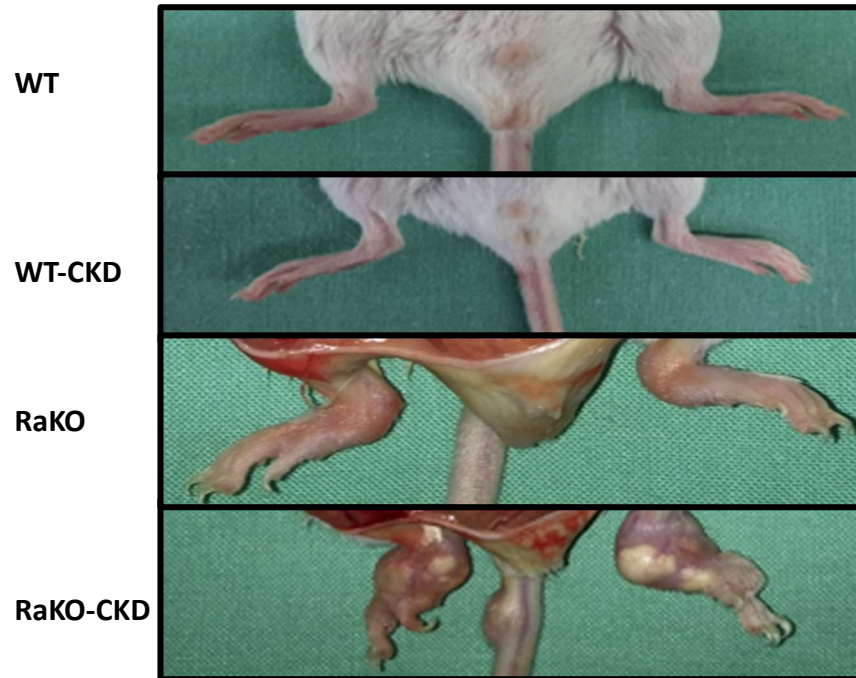
Gene	SENSE	ANTI SENSE
Hif-2 α	AGTAGCCTCTGTGGCTCCAA	TCCAGGGCATGGTAGAACTC
CRP	CCATTTCTACACTGCTCTGAGCAC	CCAAAATATGAGAATGTCGTTAGAGTTC
Hepcidin	CTGAGCAGCACCACTATCTC	TGGCTCTAGGCTATGTTTTGC
IL-6	CTATACCACTTCACAAGTCGG AGG	TGCACAACCTCTTTTCTCATTTCC
EPOR	CAACAGCGGACACATCGAGTT	TGCGGTGATAGCGAGGAGA
TFR	CATGAGGGAAATCAATGATCG TA	GCCCCAGAAGATATGTCCGGAA
c-MYC	CGGACACACAACGTCTTGAA	AGGATGTAGGCGGTGGCTTTT
IL1- β	ACAACCACGGCCTTCCCTACTT	CACGATTTCCAGAGAACATGTG
FPN-1	TCGGTTCCTCTCACTCCT GT	GTGGAGAGAGAGTGGCCA AG
IRAK-4	GTCATGACCAGCCGAATCGTG	CAGACACTGGTCAGCAGCAGA
MYD-88	CGATTATCTACAGAGCAAGGAATG	ATAGTGATGAACCGCAGGATAC
TGF- β	GCAACATGTGGAACCTCTACCAGA	GACGTCAAAGACAGCCACTCA
CD-163	GGGTCATTCAGAGGCACACTG	CTGGCTGTCCTGTCAAGGCT
CD-11c	CTGGATAGCCTTTCTTCTGCTG	GCACACTGTGTCCGAACTC

F4/80	CGTCAGGTACGGGATGAATATAAG	CTATGCCATCCACTTCCAAGAT
Ferritin	GATCAACCTGGAGTTGTATGCC	CTCCCAGTCATCACGGTCTG
TNF- α	GAATGGGTGTTTCATCCATTCT	ACATTCGAGGCTCCAGTGAATTCG
IL-10	GTTACTTGGGTTGCCAAG	TTGATCATCATGTATGCTTC
β -Actin	GGTCTCAAACATGATCTGGG	GGGTCAGAAGAATTCCTATG

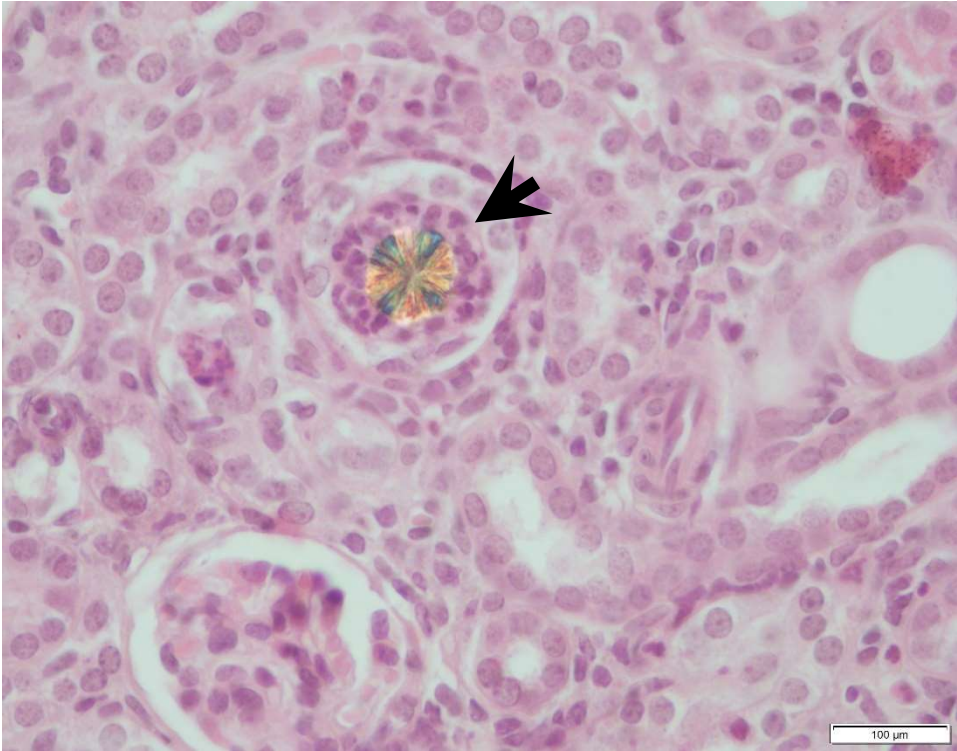
Supplementary Figure S1. Summary of experiments and main results.



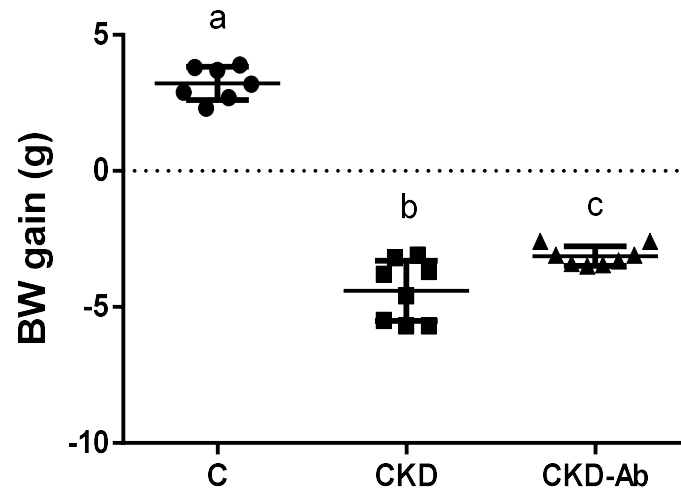
Supplementary Figure S2. Inflammation phenotype. Ankle joints of wild type (WT), WT-CKD, RaKO and RaKO-CKD mouse.



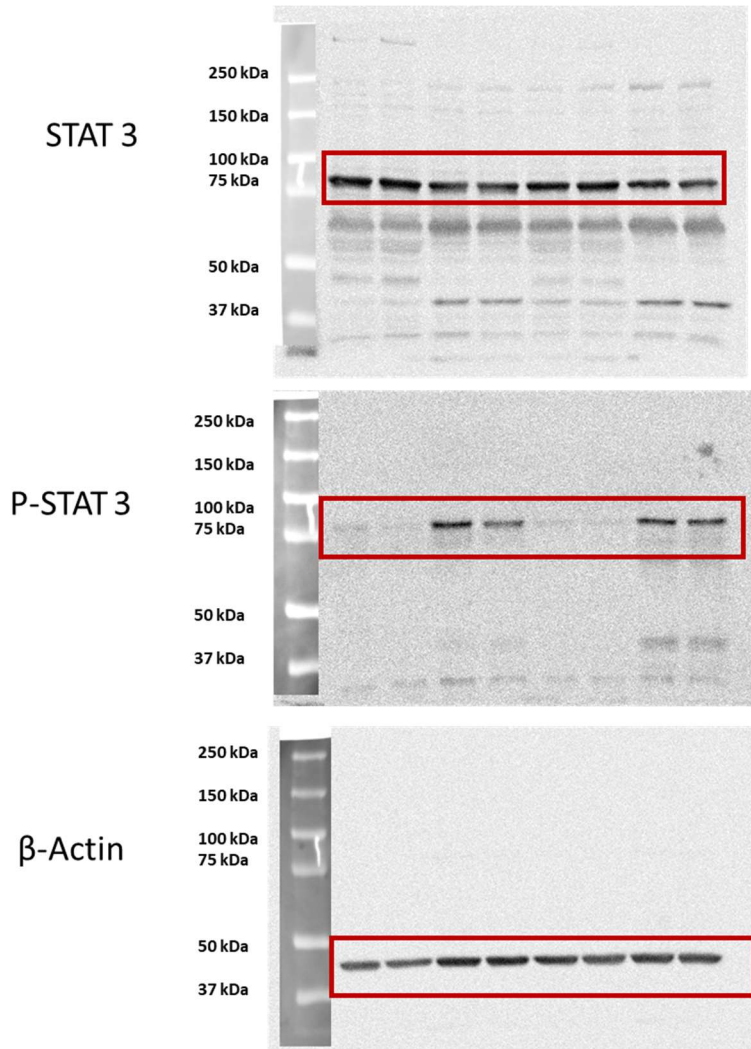
Supplementary Figure S3. Adenine crystal (arrowhead) in hematoxylin & eosin stained histological kidney section from WT-CKD animal.



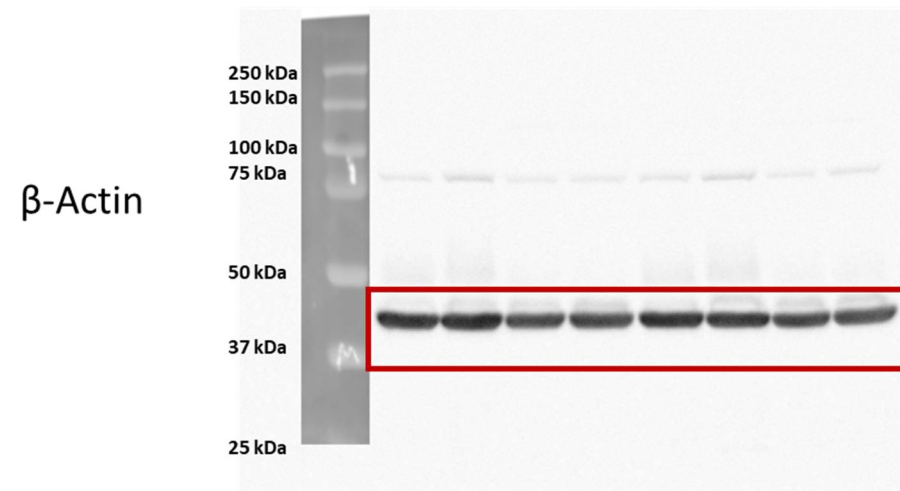
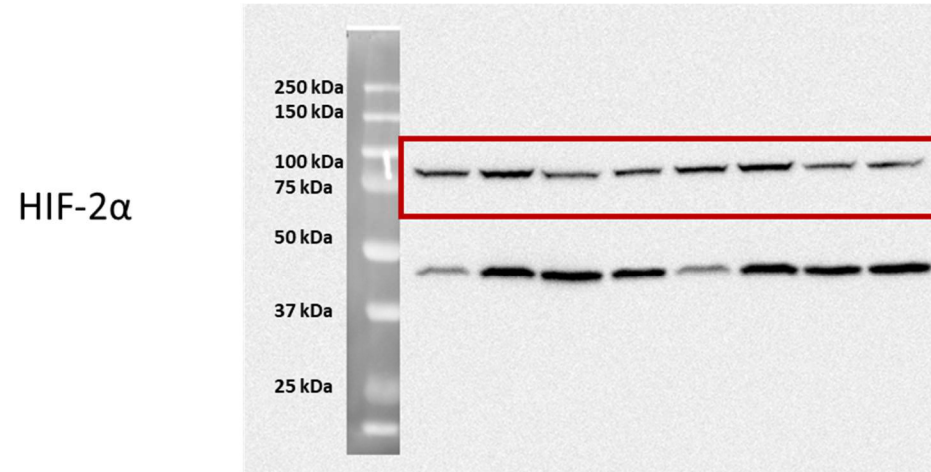
Supplementary Figure S4. Body weight gain (g) of mice on regular (C) or adenine diet, injected with saline (CKD) or an anti-IL1 monoclonal antibody (CKD-Ab).



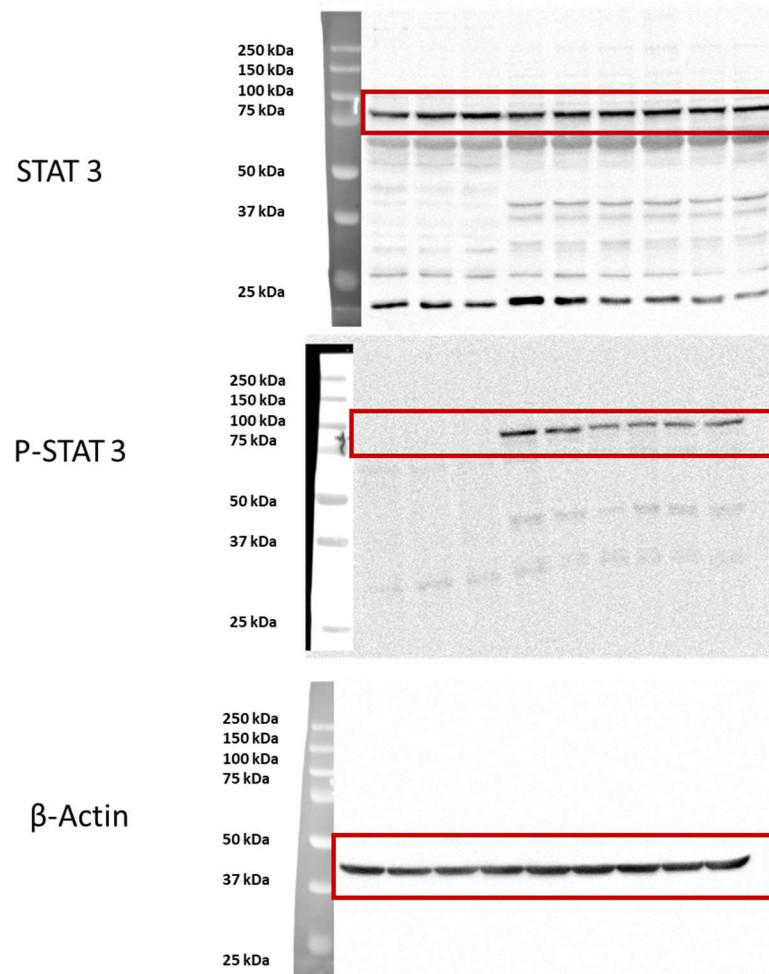
Supplementary Figure S5. Full-length original western blots for STAT 3 and p-STAT 3 referred to in Figure 2I. After the size marker, columns from left to right belong to: WT (1-2), WT-CKD (3-4), RaKO (5-6) and RaKO-CKD (7-8):



Supplementary Figure S6. Full-length original western blots for HIF-2 α referred to in Figure 4B. After the size marker, columns from left to right belong to: WT (1-2), WT-CKD (3-4), RaKO (5-6) and RaKO-CKD (7-8):



Supplementary Figure S7. Full-length original western blots for STAT 3 and p-STAT 3 and β actin, referred to in Figure 7H. After the size marker, columns from left to right belong to: C (1-3), CKD (4-6), and CKD-Ab (7-9):



Supplementary Figure S8. Full-length original western blots for HIF-2 α referred to in Figure 9B. After the size marker, columns from left to right belong to: C (1-3), CKD (4-6), and CKD-Ab (7-9):

