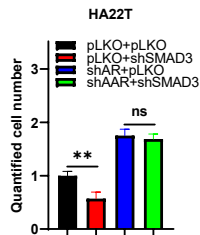
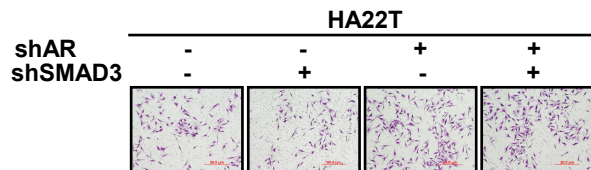


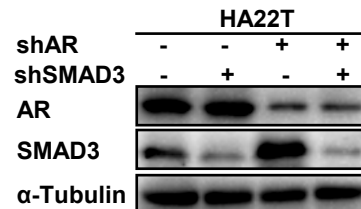
**Figure S1. A.** Transwell invasion assay was used to check invasion capacity after shAR/shSMAD3 in HA22T cells. **B.** Western blot assay was used to check AR and SMAD3 expression after shAR/shSMAD3 in HA22T cells. **C.** qRT-PCR assay was used to check AR and ACP5 expression after shAR/oeAR in HCC cells. **D.** Western blot assay was used to check ACP5 expression after adding miR-370 inhibitor in HA22T cells. **E-F.** Western blot assay was used to check ACP5 protein stability after oeAR in SK-HEP-1 cells. All quantifications are mean  $\pm$  SD, \* $p < 0.05$ , \*\* $p < 0.01$ , \*\*\* $p < 0.001$ , ns: no significant difference.

# Supplementary Figure 1

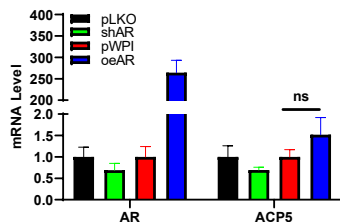
**A**



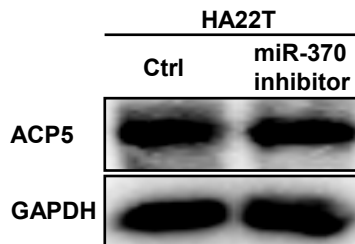
**B**



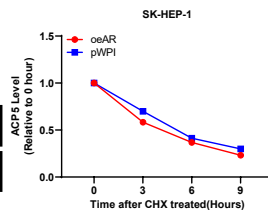
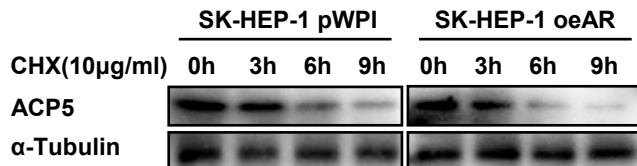
**C**



**D**



**E**



**F**

