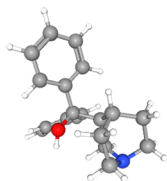
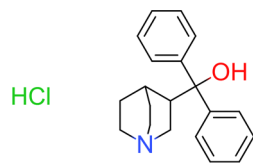


Figure S1. Chemical structural formula of gastrodin.



Gastrodin: 1-Azabicyclo[2.2.2]oct-3-yl(diphenyl)methanol hydrochloride

Table SI. Suzuki's criteria of hepatic ischemic reperfusion.

Score	Congestion	Vacuolation	Necrosis
0	-	-	-
1	Very mild (10%)	Very mild (10%)	Single cell necrosis
2	Mild (11-30%)	Mild (11-30%)	Mild (<30%)
3	Moderate (31-60%)	Moderate (31-60%)	Moderate (31-60%)

Table SII. Reverse transcription-quantitative PCR primer sequences.

Gene	Forward primer (5'-3')	Reverse primer (5'-3')
Nrf2	TCTTGGAGTAAGTCGAGAAGTGT	GTTGAAACTGAGCGAAAAAGGC
SOD	AACCAGTTGTGTTGTCAGGAC	CCACCATGTTTCTTAGAGTGAGG
HO-1	AAGCCGAGAATGCTGAGTTCA	GCCGTGTAGATATGGTACAAGGA
Bax	TGAAGACAGGGGCCTTTTTG	AATTCGCCGGAGACACTCG
Bcl-2	ATGCCTTTGTGGA ACTATATGGC	GGTATGCACCCAGAGTGATGC
CASP-3	TGGTGATGAAGGGGTCATTTATG	TTCGGCTTTCCAGTCAGACTC
β -actin	GGCTGTATTCCCCTCCATCG	CCAGTTGGTAACAATGCCATGT

CASP, caspase; HO, heme oxygenase; Nrf2, nuclear erythroid 2-related factor 2; SOD, superoxide dismutase.

Table SIII. Primer information.

Genes	GenBank accession no.	Amplicon size (number of bases)
Nrf2	NM_010902	140
SOD	NM_011434	139
HO-1	NM_010442	100
Bax	NM_007527	140
Bcl-2	NM_177410	120
CASP-3	NM_009810	105
β -actin	NM_007393	154

CASP, caspase; HO, heme oxygenase; Nrf2, nuclear erythroid 2-related factor 2; SOD, superoxide dismutase.
