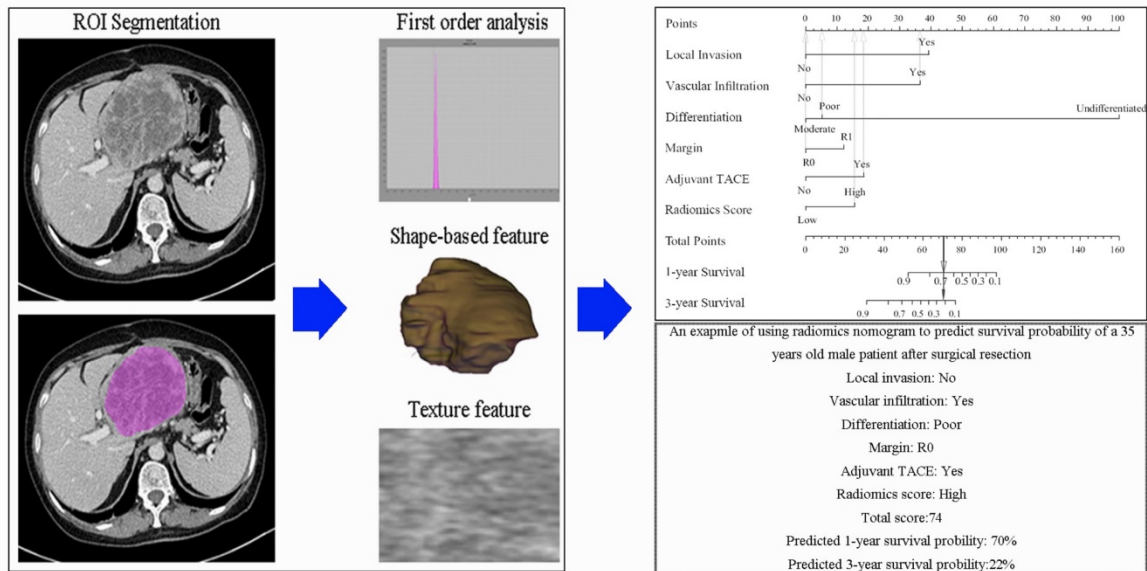
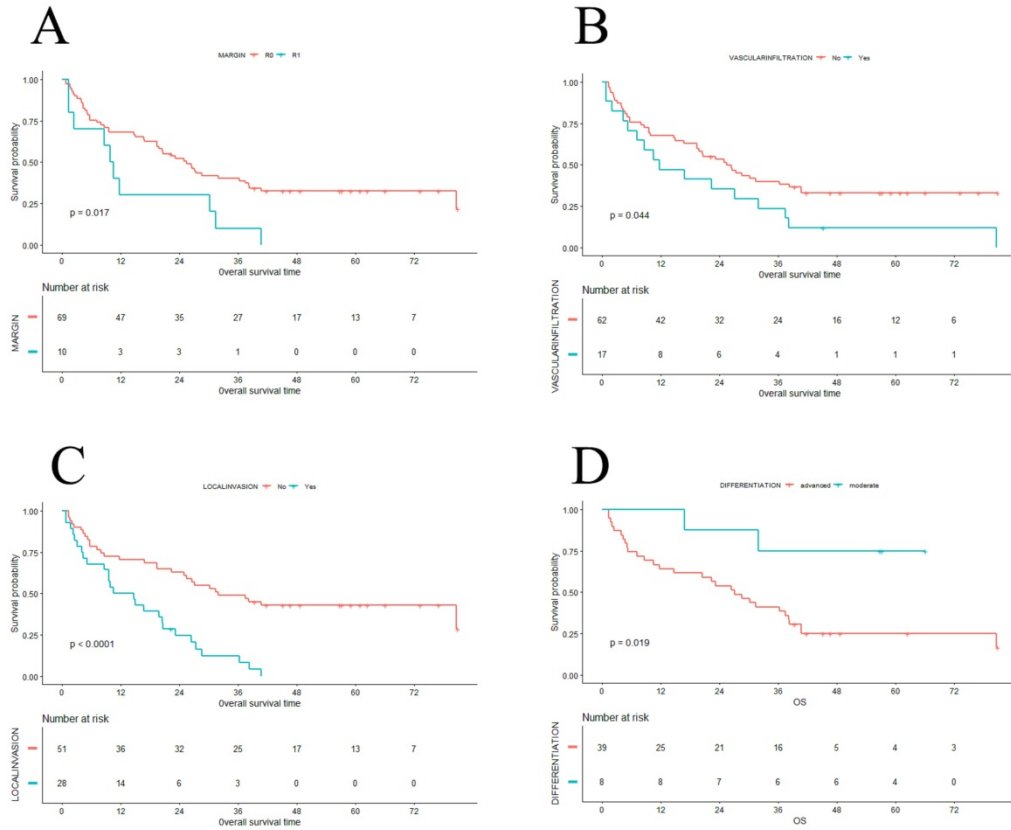


Supplement figure 1. An example of using radiomics nomogram to predict survival probability of a 35 years old male patient after surgical resection. ROI: region of interest; TACE: transcatheter arterial chemoembolization.



Supplement figure 2. The survival curves stratified by surgical margin, vascular invasion, local invasion, and differentiation grade. A: survival curves stratified by surgical margin; B: survival curves stratified by vascular invasion; C: survival curves stratified by local invasion; D: survival curves stratified by differentiation grade.



Supplement table 1. The formulas for constructing the radiomics scoring models.

Model	Formula
radiomics score	$-0.0001249365\text{SHAPE_Sphericity} + 3.2096802376\text{GLRLM_LGRE} + 2.5467404092\text{GLRLM_SRLGE}$

Supplement table 2. Power analysis of the study.

High risk group/ Low risk group	value	High risk group/ Low risk group	value
Two-sided α	0.05	Two-sided α	0.05
1-year overall survival rate (High risk group)	0.306	3-year overall survival rate (High risk group)	0.056
1-year overall survival rate (Low risk group)	0.901	3-year overall survival rate (Low risk group)	0.624
Assuming hazard ratio	7.01	Assuming hazard ratio	2.5
Power	90%	Power	90%
Estimated patients number (High risk group)	3	Estimated patients number (High risk group)	7
Estimated patients number (Low risk group)	4	Estimated patients number (Low risk group)	8