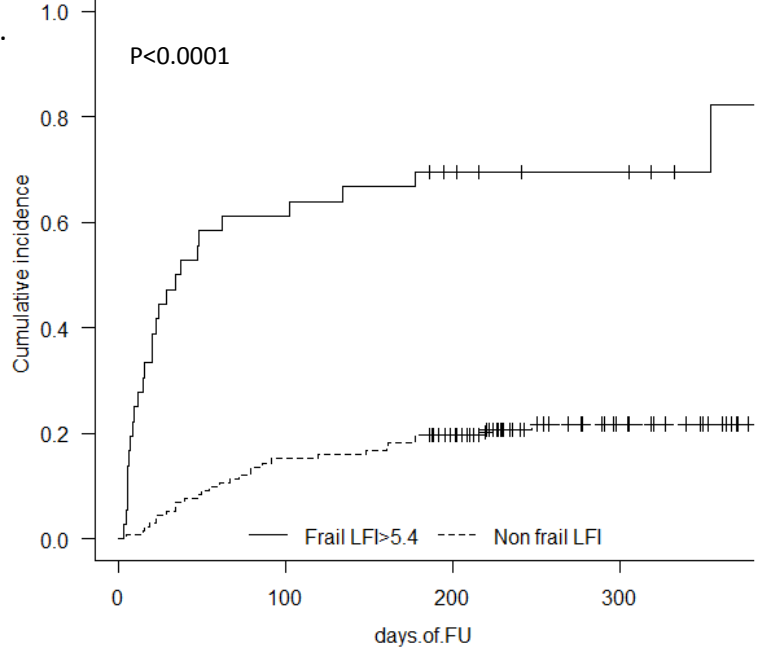
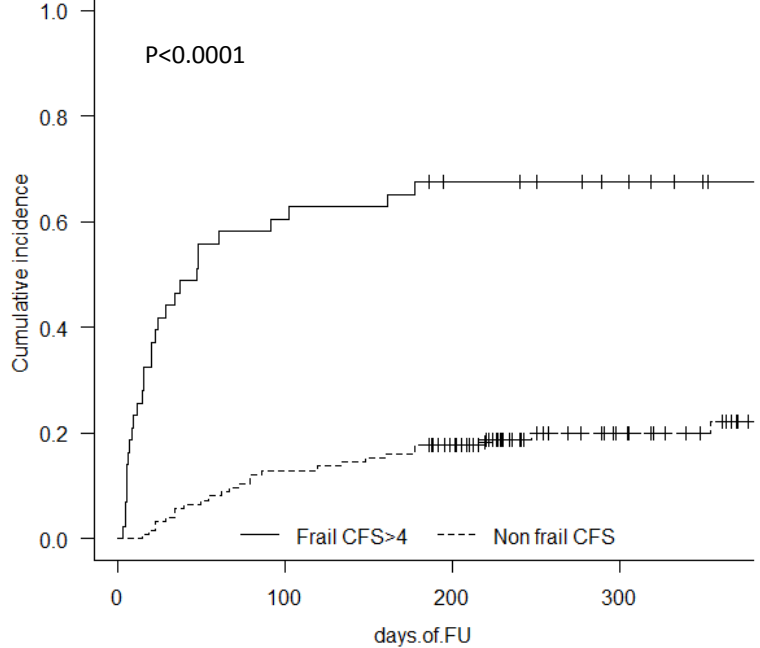


Figure 1.



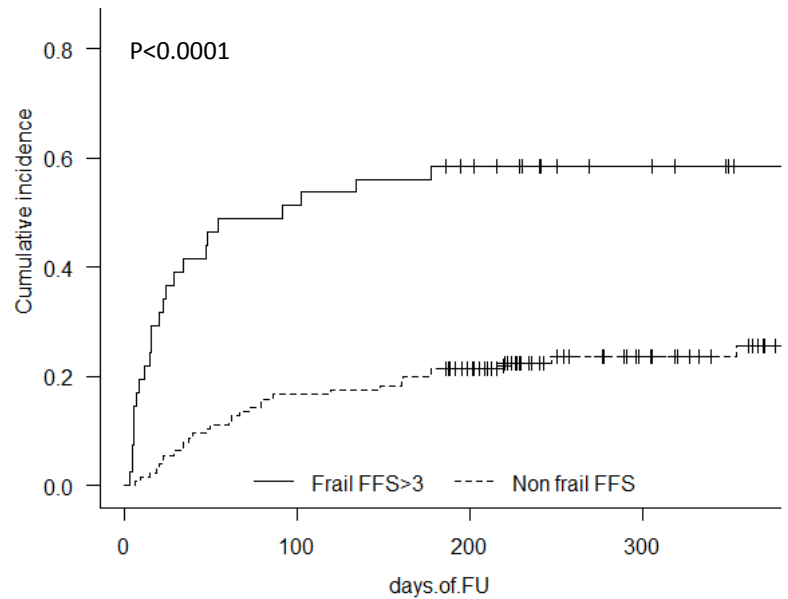
Number at risk

Frail LFI>5.4	36	14	9	5
Non frail LFI	132	107	91	49



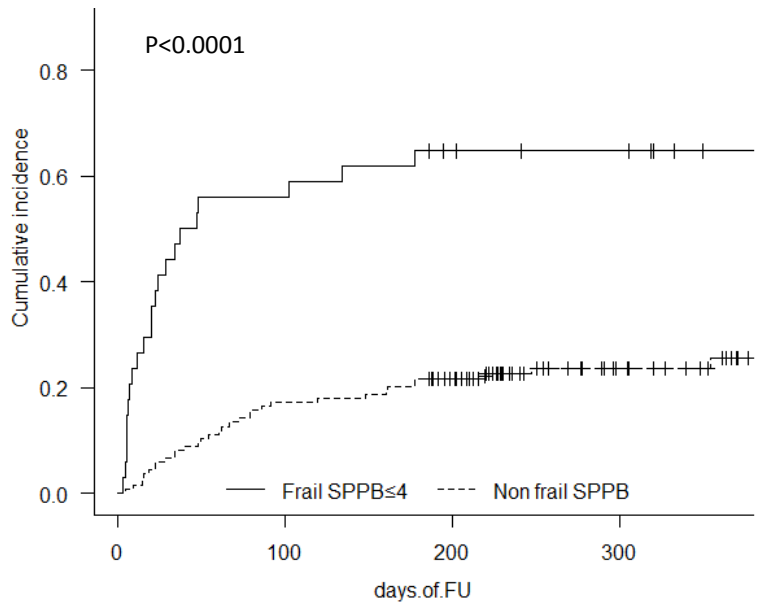
Number at risk

Frail CFS>4	43	16	11	7
Non frail CFS	124	104	89	47



Number at risk

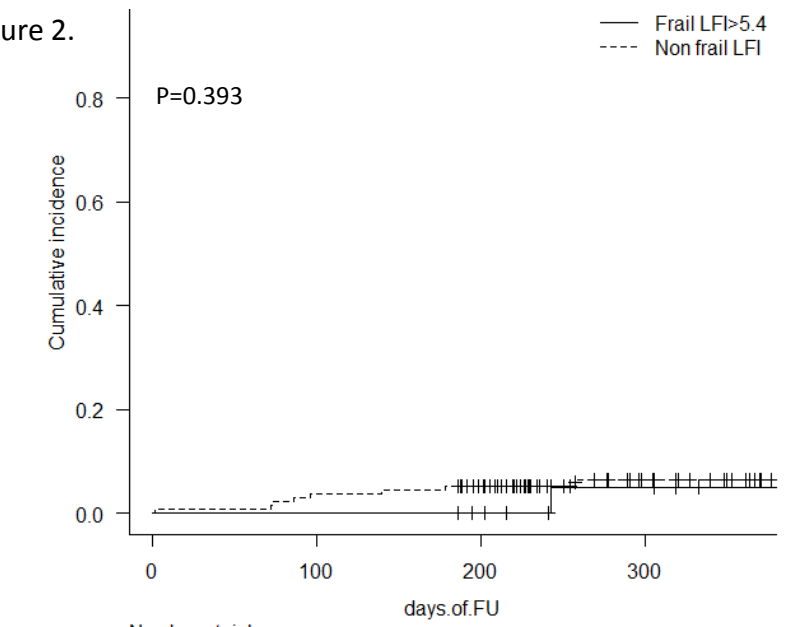
Frail FFS>3	41	20	15	7
Non frail FFS	126	100	84	46



Number at risk

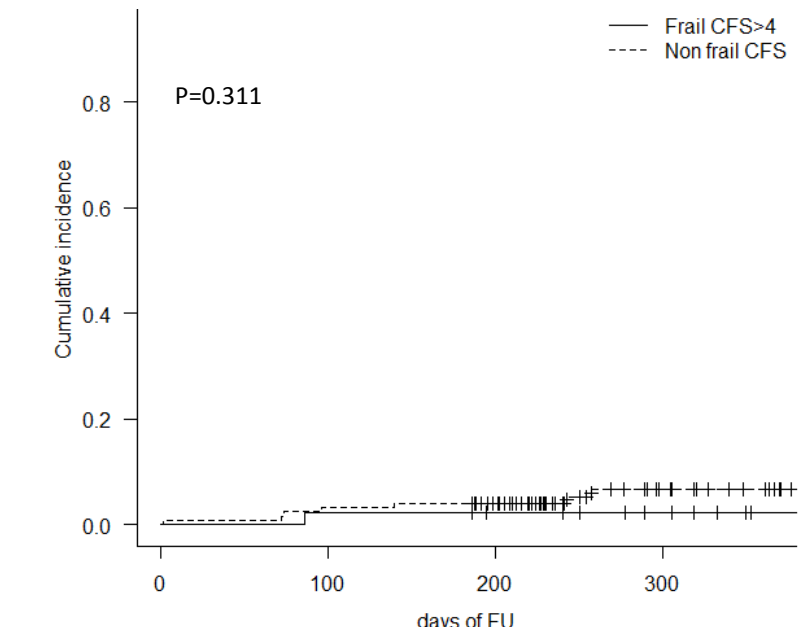
Frail SPPB<=4	34	15	10	8
Non frail SPPB	134	106	90	46

Figure 2.



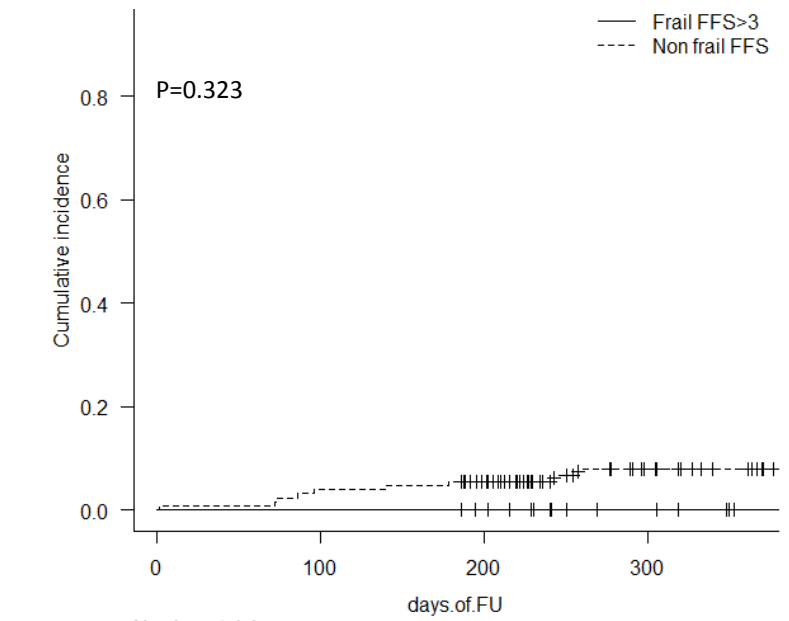
Number at risk

Frail LFI>5.4	36	14	9	5
Non frail LFI	132	107	91	49



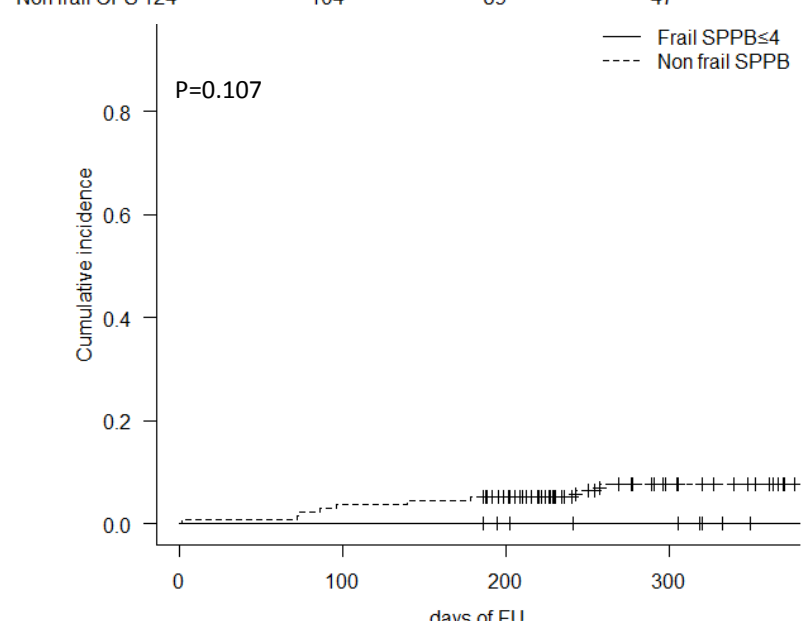
Number at risk

Frail CFS>4	43	16	11	7
Non frail CFS	124	104	89	47



Number at risk

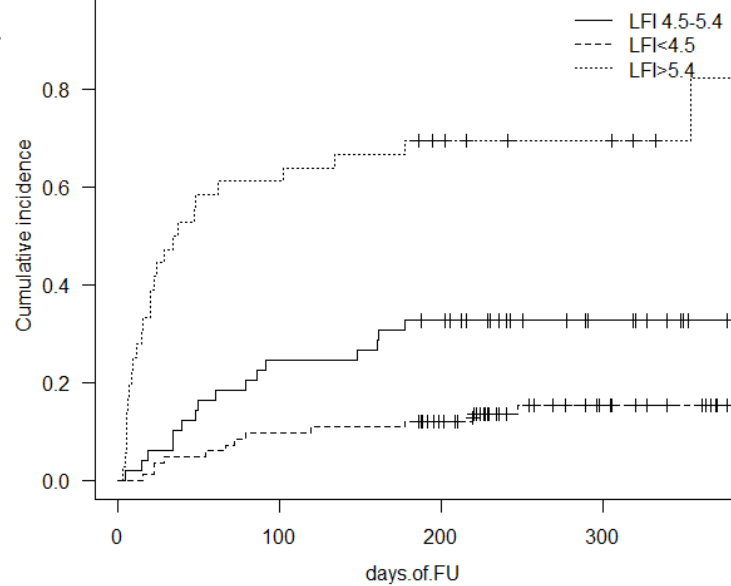
Frail FFS>3	41	20	15	7
Non frail FFS	126	100	84	46



Number at risk

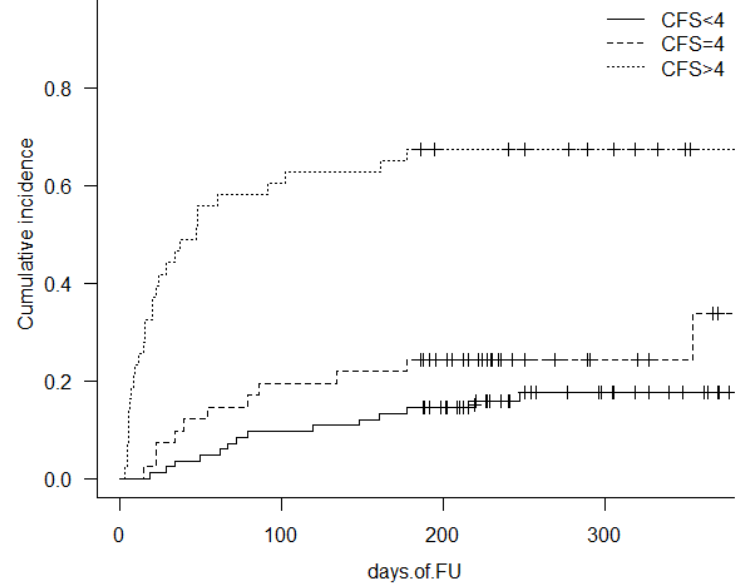
Frail SPPB<=4	34	15	10	8
Non frail SPPB	134	106	90	46

Figure S1.



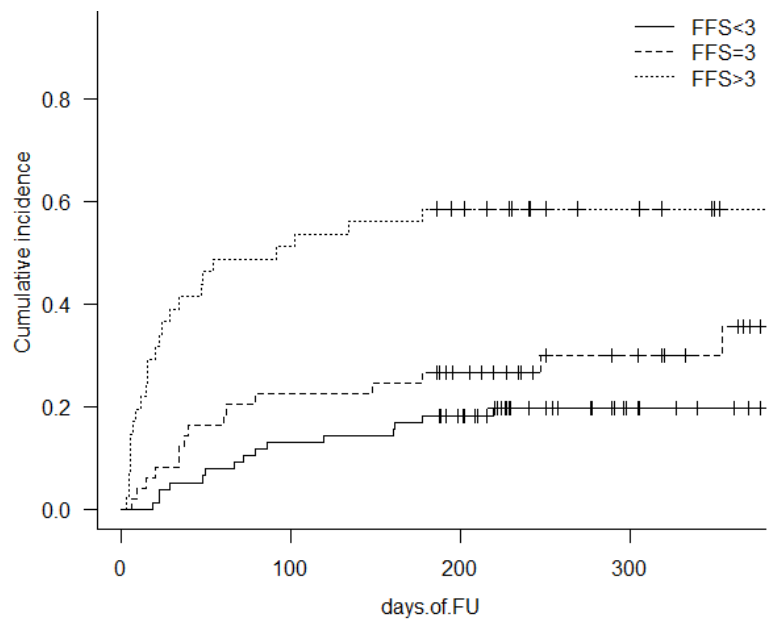
Number at risk

	0	100	200	300
LFI 4.5-5.4	49	35	28	12
LFI < 4.5	83	72	63	37
LFI > 5.4	36	14	9	5



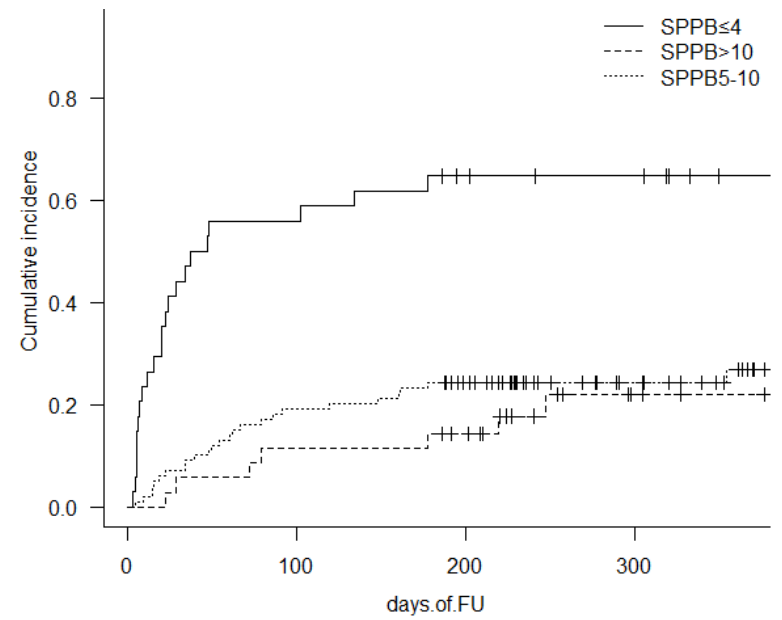
Number at risk

	0	100	200	300
CFS < 4	83	71	62	36
CFS = 4	41	33	27	11
CFS > 4	43	16	11	7



Number at risk

	0	100	200	300
FFS < 3	77	64	56	30
FFS = 3	49	36	28	16
FFS > 3	41	20	15	7



Number at risk

	0	100	200	300
SPPB ≤ 4	34	15	10	8
SPPB > 10	35	29	26	12
SPPB 5-10	99	77	64	34