
SUPPLEMENTARY MATERIAL

Thymosin β 4 released with functionalized self-assembling peptide activates epicardium and enhances repair of infarcted myocardium

Running head: Activating Epicardium by SAP-released T β 4

Yong-li Wang^{1,2}, Shu-na Yu¹, Hao-ran Shen¹, Hai-jie Wang^{1,*}, Xue-ping Wu¹, Qiang-li Wang^{1,3}, Bin Zhou⁴, Yu-zhen Tan^{1,*}

1. Department of Anatomy, Histology and Embryology, Shanghai Medical School of Fudan University, Shanghai 200032, China
2. Laboratory of Oral Microbiota and Systemic Diseases, Shanghai Ninth People's Hospital, College of Stomatology, Shanghai Jiao Tong University School of Medicine, Shanghai 200125, China.
3. School of Basic Medical Sciences, Shanghai University of Traditional Chinese Medicine, Shanghai 201203, China.
4. Shanghai Institute of Biochemistry and Cell Biology, Chinese Academy of Sciences, Shanghai 200032, China

To whom correspondence should be addressed to:

Yu-zhen Tan Professor, MD., PhD.

Department of Anatomy, Histology and Embryology

Shanghai Medical School of Fudan University

138 Yixueyuan Road, Shanghai 200032, People's Republic of China

Tel: +86-21-54237019-9306

E-mail: yztan@shmu.edu.cn

* Corresponding author: Department of Anatomy, Histology and Embryology, Shanghai Medical School of Fudan University, 138 Yixueyuan Road, Shanghai 200032, People's Republic of China.

E-mail: yztan@shmu.edu.cn (YZ Tan); hjwang@shmu.edu.cn (HJ Wang)

Table S1. The sequences of the primers

Symbol	Version	Sequence (5' to 3')	Length
bFGF	NM_008006.2	(F) GGCTGCTGGCTTCTAAGTG (R) CCAACTGGAGTATTTCCGTGA	101 bp
CD31	NM_001032378.2	(F) GCCAAGGCCAAACAGAAACC (R) CCATGTTCTGGGGGTCTTTAT	178 bp
CNN1	NM_009922.4	(F) CCCACAATCACCACCCGCACAATA (R) TCATCTCCCCAAACCGTAACCCTAT	165 bp
cTnT	NM_001130174.2	(F) CGGGCGTTGGAAATAGATGA (R) TAGGGGTCAGGCAGAGTACT	165 bp
Cx43	NM_010288.3	(F) AAGGCGTGAGGGAAGTACCA (R) GGAGTAGGCTTGGACCTTGT	215 bp
GATA4	NM_001310610.1	(F) GGGATTCAAACCAGAAAACG (R) GCTGTGCCCATAGTGAGATG	198 bp
HGF	NM_001289458.1	(F) GGGACGGTATCCATCACT (R) TTCGTAGCGTACCTCTGG	186 bp
HIF-1 α	NM_001313919.1	(F) TCGGCGAAGCAAAGAGTC (R) CCATCTGTGCCTTCATCTCA	182 bp
IGF-1	NM_001111274.1	(F) TGCCACATCACCGCAGGAT (R) CCACGCCAGGACCACTTT	200 bp
Mylk	NM_139300.3	(F) AAAAACCCTCTGGACTGCAC (R) TCACAGCATTGCCCGTTTTTC	145 bp
Nkx2.5	NM_008700.2	(F) CAGTGGAGCTGGACAAAGCC (R) TAGCGACGGTCTGGAACCA	217 bp
PDGF-BB	NM_011057.3	(F) TTAGCGGGCGAGTGAAGACG (R) GGGAGGACCTGGACAAGGGA	196 bp
Rock1	NM_009071.2	(F) AAGCTTTTGTGGCAATCAGC (R) AACTTTCCTGCAAGCTTTTATCCA	129 bp
SCF	NM_001347156.1	(F) GTCATTGTTGGCTACGAG (R) CATAACACGAGGTCATCC	145 bp
SDF-1	NM_001012477.2	(F) GTCAGCCTGAGCTACCGA (R) GAAGGGCACAGTTTGGAG	103 bp
Tbx18	NM_023814.4	(F) GTGGAGTCATACGCATTCTGGA (R) GTGAGGATGTGTAGCAGGGACA	141 bp
Tcf21	NM_011545.1	(F) CATTACCCAGTCAACCTGA (R) CCACTTCCTTCAGGTCATTCTC	71 bp
Vcl	NM_009502.4	(F) AACCAGCCAATGATGATGGC (R) TTGGCTGCTGCAATGATGTC	89 bp
VEGF	NM_001025250.3	(F) ACTATTCAGCGGACTCACCAG (R) TGAGGGAGTGAAGAACCAACC	171 bp
vWF	NM_011708.4	(F) GCGGTGTAAACGGACATCTC (R) ACAGGTTCCGGGCATACTCAA	232 bp
WT1	NM_144783.2	(F) GCCTTACCTTGCACCTTCTC	186 bp

α -SMA	NM_007392.3	(R) GACCGTGCTGTATCCTTGGT (F) GGCTCTGGGCTCTGTAAGG	149 bp
β -actin	NM_007393.5	(R) CTCTTGCTCTGGGCTTCATC (F) GGAGATTACTGCTCTGGCTCCTA (R) GACTCATCGTACTCCTGCTTGCTG	150 bp

Table S2. The primary sequences of the self-assembling peptides

Code	Primary sequence
RADA16-I	Ac-RADARADARADARADA-CONH ₂
RADA-RPR	Ac-(RADA) ₄ GGRPRHQGVMRGDS-CONH ₂

Table S3. The antibodies used

Antibody	Dilution	Company	Application
Chicken anti-GFP	1:100	Novus Biologics, Littleton, CO, USA	Immunofluorescence
Rabbit anti-Aurora B	1:100	Sigma-Aldrich, Saint Louise, MO, USA	Immunofluorescence
Rabbit anti-CCR7	1:100	Abcam, Cambridge, MA, USA	Immunofluorescence
Rabbit anti-Cx43	1:100	Abcam, Cambridge, MA, USA	Immunofluorescence
Rabbit anti-GFP	1:50	Santa Cruz Biotech, Dallas, TX, USA	Immunofluorescence
Rabbit anti-LYVE-1	1:200	Novus Biologics, Littleton, CO, USA	Immunofluorescence
Rabbit anti-Tbx18	1:100	Abcam, Cambridge, MA, USA	Immunofluorescence
Rabbit anti-T β 4	1:200	Santa Cruz Biotech, CA, USA	Immunofluorescence
Rabbit anti-WT1	1:100	Santa Cruz Biotech, CA, USA	Immunofluorescence
Mouse anti-CD31	1:100	Abcam, Cambridge, MA, USA	Immunofluorescence
Mouse anti-CD31	1:100	BDBiosciences, San Jose, CA, USA	Immunofluorescence
Mouse anti-CD68	1:100	Santa Cruz Biotech, Dallas, TX, USA	Immunofluorescence
Mouse anti-cTnT	1:200	Santa Cruz Biotech, CA, USA	Immunofluorescence
Mouse anti-Ki-67	1:200	Abcam, Cambridge, MA, USA	Immunofluorescence

			MA, USA	
Mouse anti- α -SMA	1:100	Abcam, Cambridge, MA, USA	Immunofluorescence	
Goat anti-chicken (conjugated with DyLight 488)	1:400	Novus Biologics, Littleton, CO, USA	Immunofluorescence	
Goat anti-mouse (conjugated with Alexa Fluor 594)	1:400	Jackson, West Grove, PA, USA	Immunofluorescence	
Goat anti-mouse (conjugated with Alexa Fluor 488)	1:400	Jackson, West Grove, PA, USA	Immunofluorescence	
Goat anti-mouse (conjugated with Alexa Fluor 647)	1:400	Jackson, West Grove, PA, USA	Immunofluorescence	
Goat anti-rabbit (conjugated with Alexa Fluor 488)	1:400	Jackson, West Grove, PA, USA	Immunofluorescence	
Goat anti-rabbit (conjugated with DyLight 594)	1:400	Abcam, Cambridge, MA, USA	Immunofluorescence	
Mouse anti-cTnT	1:1000	Santa Cruz Biotech, CA, USA	Western Blotting	
Mouse anti- β -actin	1:4000	Sigma-Aldrich, Saint Louise, MO, USA	Western Blotting	

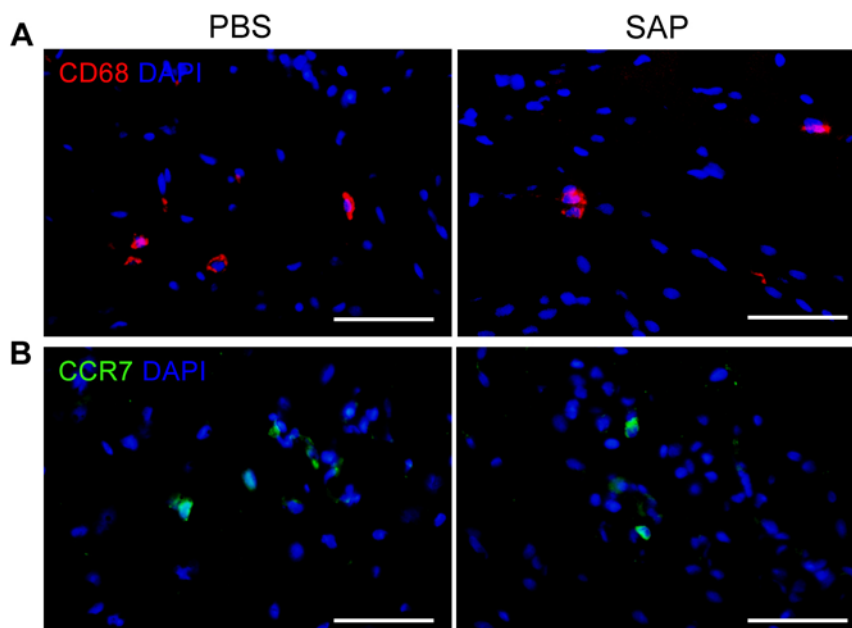


Figure S1. The distribution of CD68⁺ or CCR7⁺ immune cells at 1 week after

subcutaneous injection of the SAP. Immunostaining. Scale bar = 50 μ m.

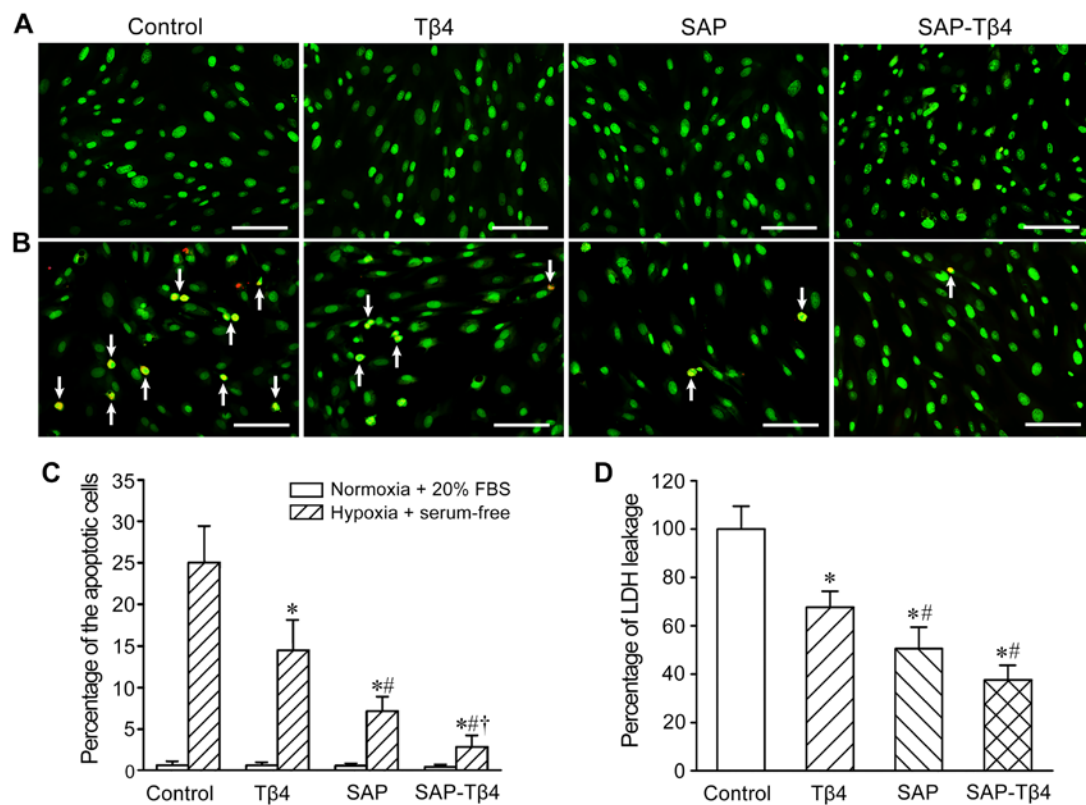


Figure S2. The protection of T β 4 on survival of EPDCs. (A) EPDCs incubated in normoxic condition. (B) EPDCs treated with hypoxia (1% O₂) and serum-free for 12 h. Arrows indicate the apoptotic cells. EB/AO staining. Scale bar = 100 μ m. (C) Statistical result of the number of the apoptotic cells. n = 5. (D) The concentration of LDH in the condition of hypoxia and serum deprivation. n = 5. * p < 0.01 versus control group; # p < 0.05 versus T β 4 group; † p < 0.05 versus SAP group.

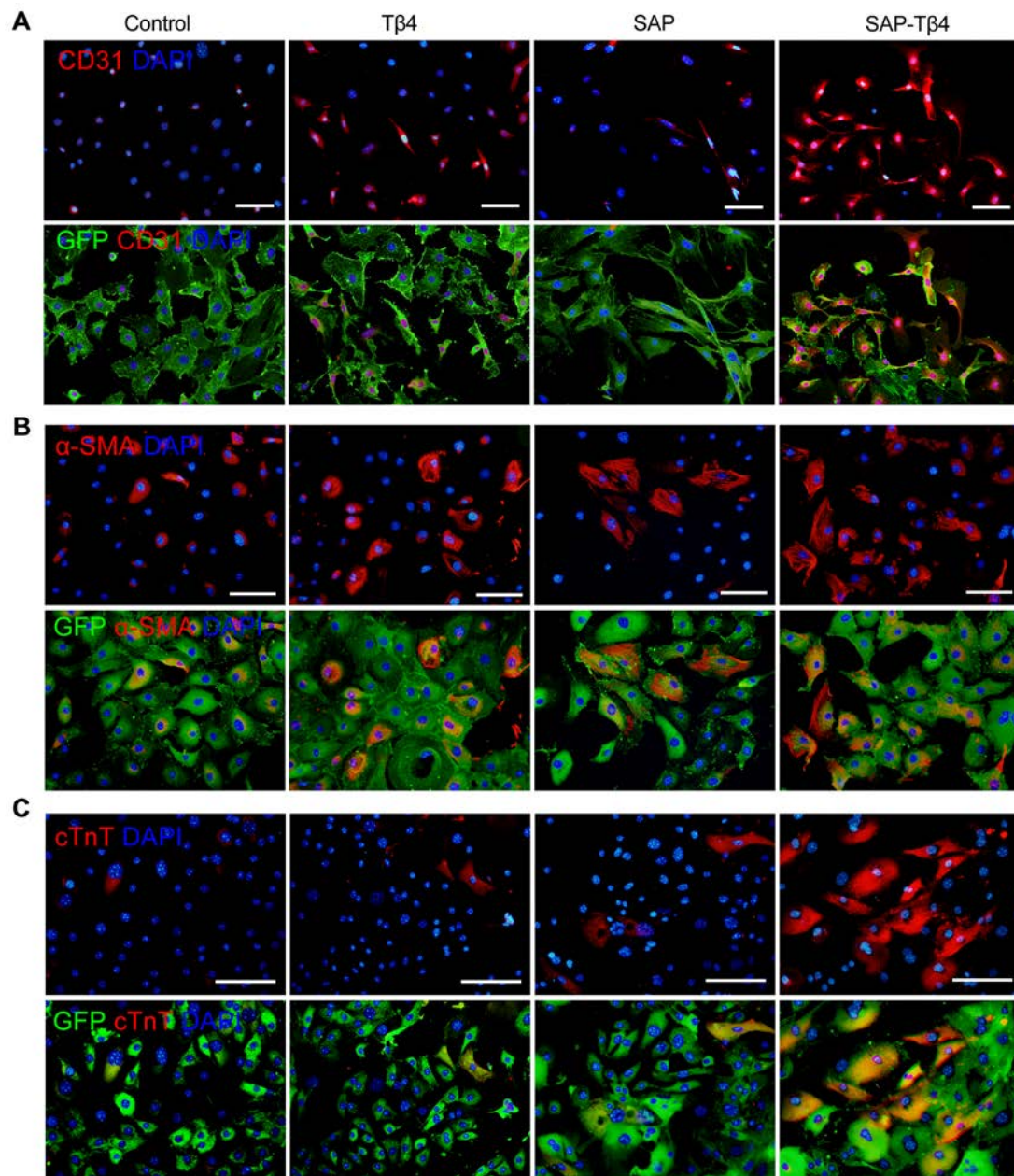


Figure S3. SAP-released T β 4 promotes differentiation of EPDCs towards cardiovascular cells. (A) CD31⁺ cells differentiated from EPDCs. (B) α -SMA⁺ cells differentiated from EPDCs. (C) cTnT⁺ cells differentiated from EPDCs. Immunostaining. Scale bar = 50 μ m.

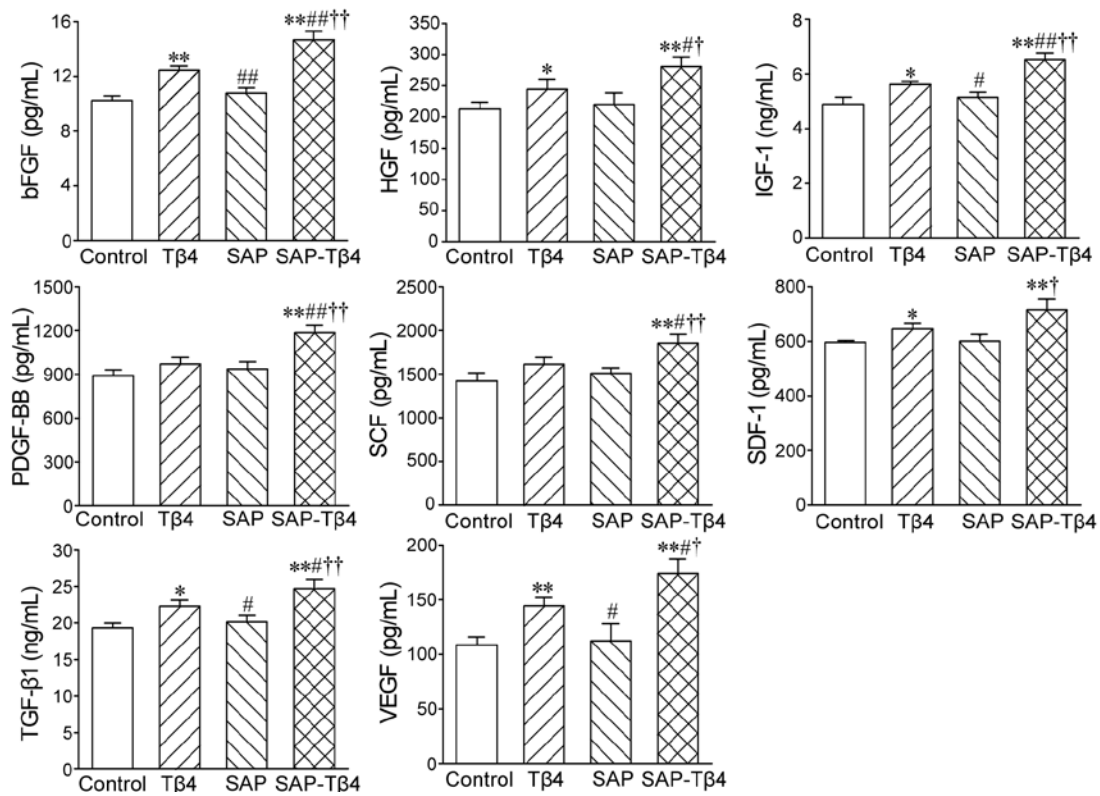


Figure S4. Paracrine factors secreted by EPDCs. The cells were incubated for one week. ELISA. * $p < 0.05$ and ** $p < 0.01$ versus control group; # $p < 0.05$ and ## $p < 0.01$ versus Tβ4 group; † $p < 0.05$ and †† $p < 0.01$ versus SAP group. $n = 3$.

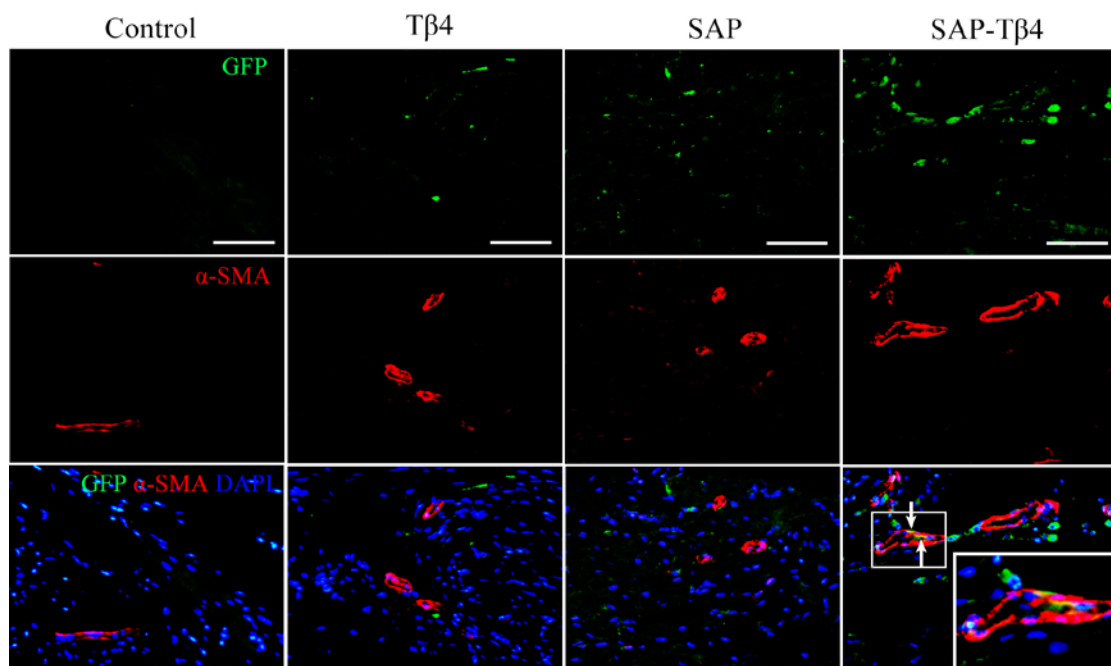


Figure S5. EPDCs differentiate into smooth muscle cells at 4 weeks after

implantation. α -SMA⁺ cells differentiated from EPDCs (arrows) are located at the wall of the microvessels at the infarcted region. The large box is magnification of the small box. Immunostaining. Scale bar = 100 μ m.

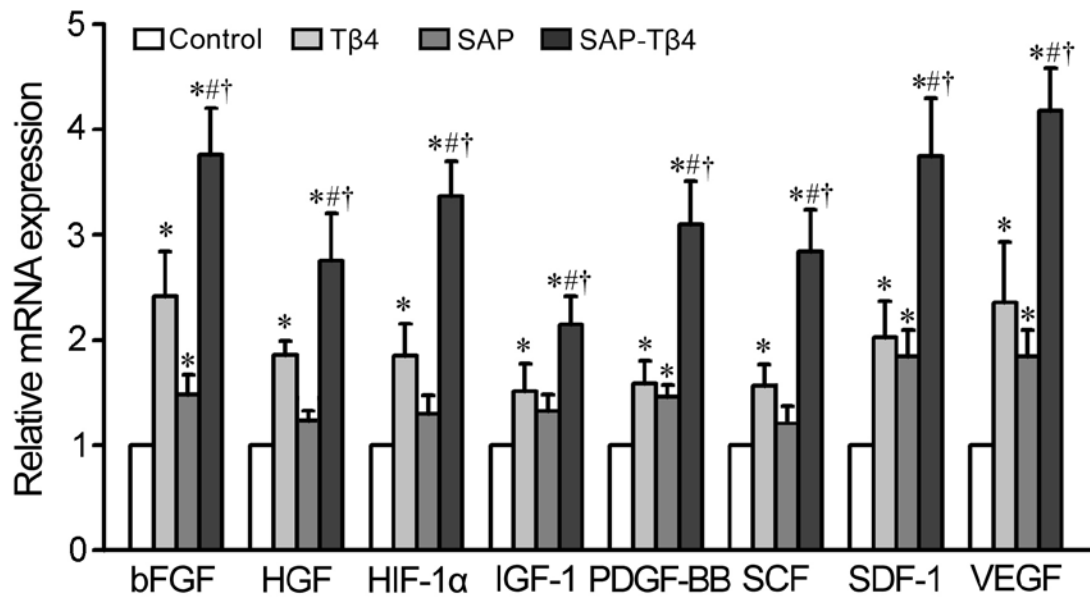


Figure S6. Expression of the genes in the infarcted myocardium at 1 week after implantation. qRT-PCR analysis. * $p < 0.05$ versus control group; # $p < 0.05$ versus T β 4 group; † $p < 0.05$ versus SAP group. $n = 4$.