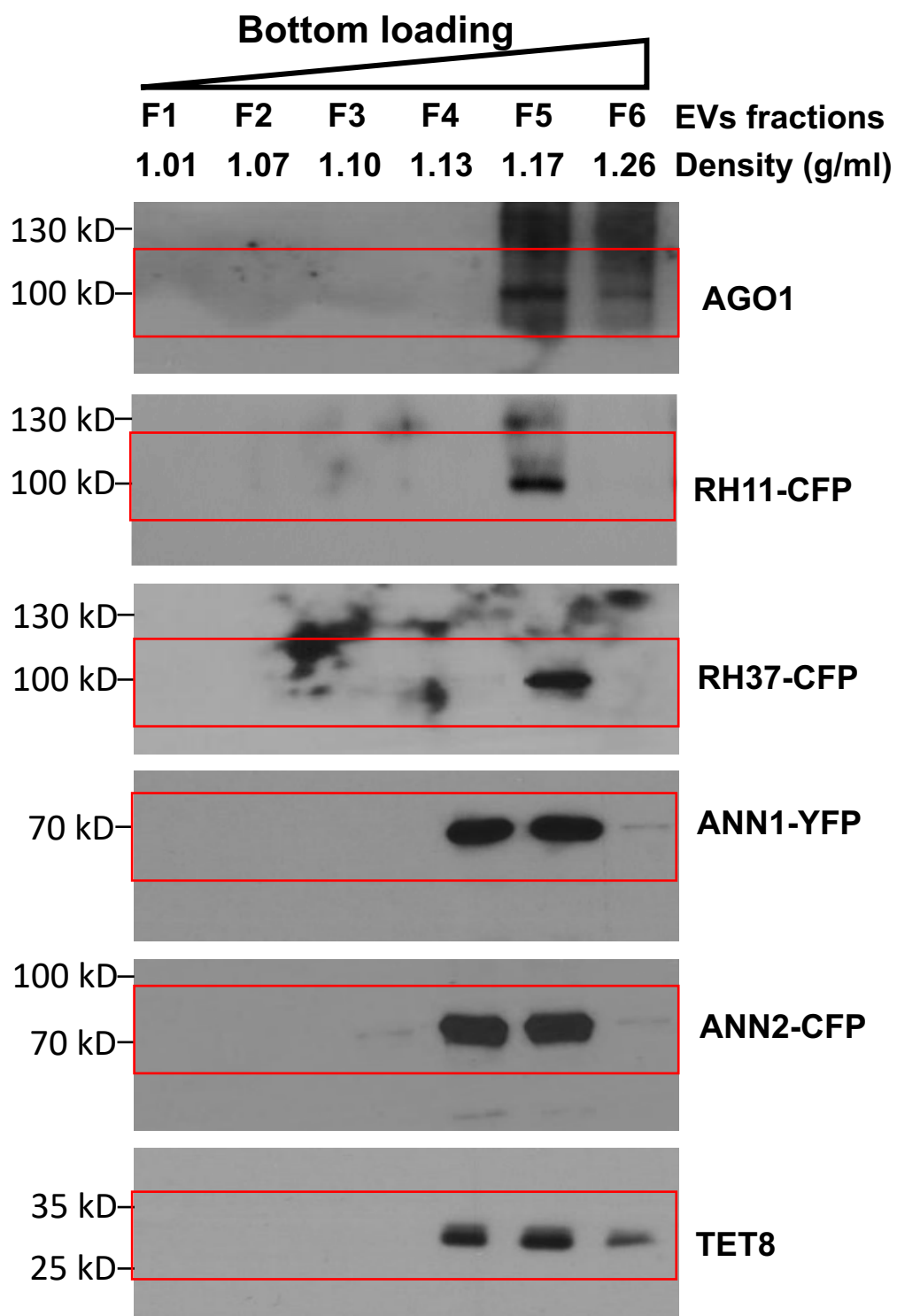


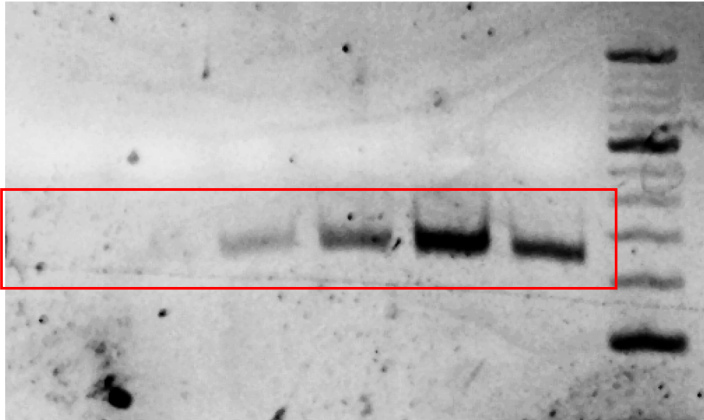
Extended Data Fig 4



Bottom loading

F1 F2 F3 F4 F5 F6 EVs fractions
1.01 1.07 1.10 1.13 1.17 1.26 Density (g/ml)

70 bp

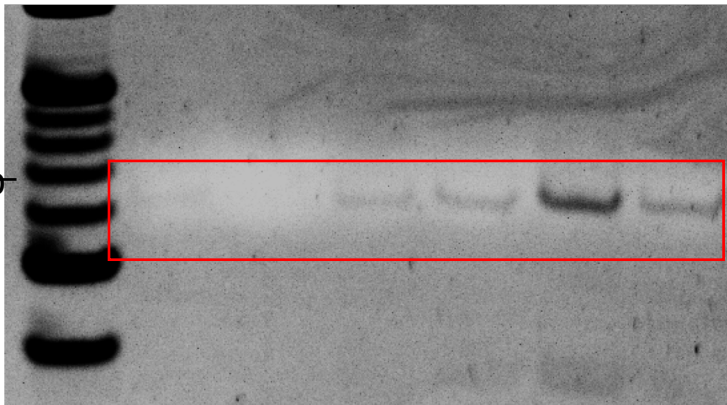


TAS1c-siR483

Bottom loading

F1 F2 F3 F4 F5 F6 EVs fractions
1.01 1.07 1.10 1.13 1.17 1.26 Density (g/ml)

70 bp

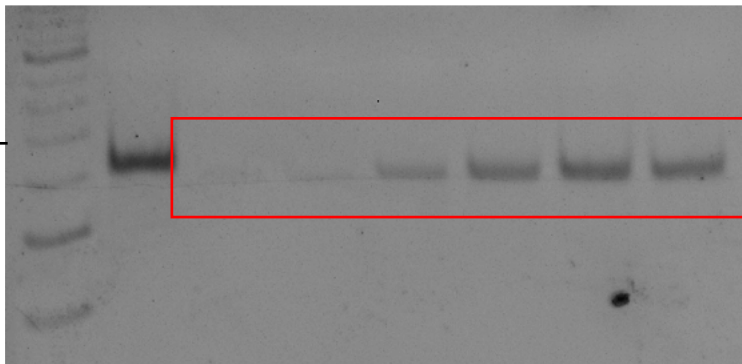


TAS2-siR453

Bottom loading

F1 F2 F3 F4 F5 F6 EVs fractions
1.01 1.07 1.10 1.13 1.17 1.26 Density (g/ml)

70 bp

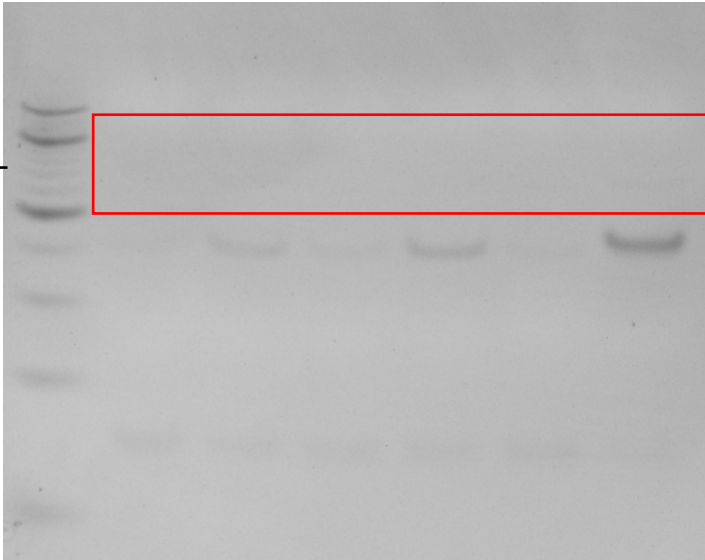


miRNA 166

Bottom loading

F1 F2 F3 F4 F5 F6 EVs fractions
1.01 1.07 1.10 1.13 1.17 1.26 Density (g/ml)

70 bp

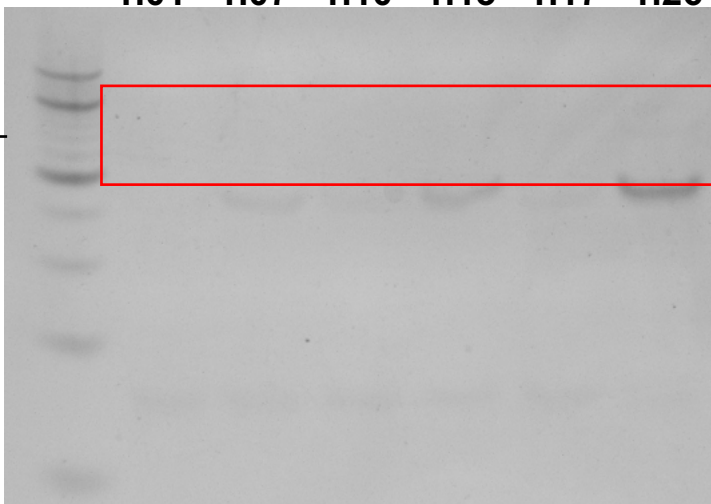


TAS1c-siR585

Bottom loading

F1 F2 F3 F4 F5 F6 EVs fractions
1.01 1.07 1.10 1.13 1.17 1.26 Density (g/ml)

70 bp



TAS2-siR710