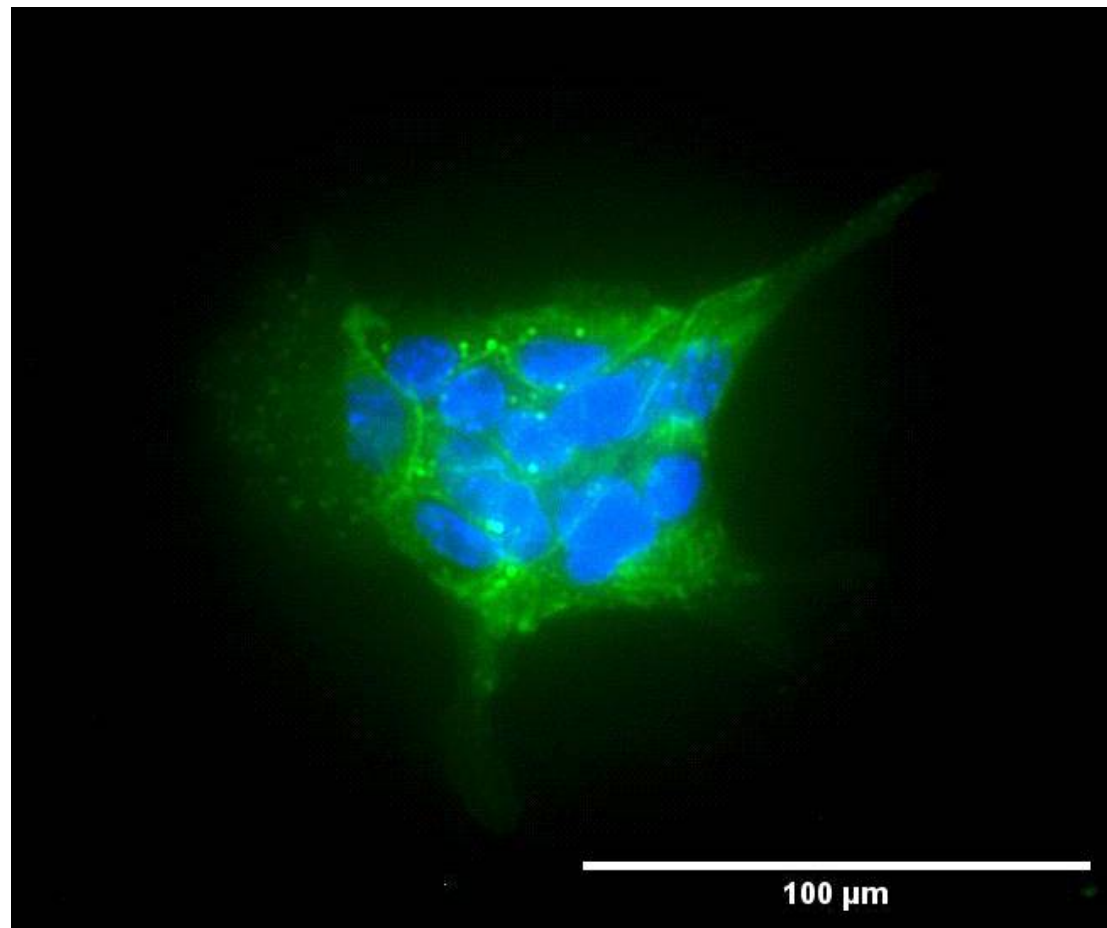


Supplemental Figure 1



Supplemental Figure 1. Expression of epithelial cell-specific marker E-Cadherin is detected in UCD-PYMT cells. UCD-PYMT cell colonies, defined by the interaction of at least 2 cells, were stained with anti-E-Cadherin antibody. E-Cadherin expression (green) was detected in all UCD-PYMT cell colonies. Image is representative of median E-Cadherin fluorescence intensity in colonies cultured to day 5. Slides were costained with DAPI (blue) to visualize nuclei. Original magnification 40x.