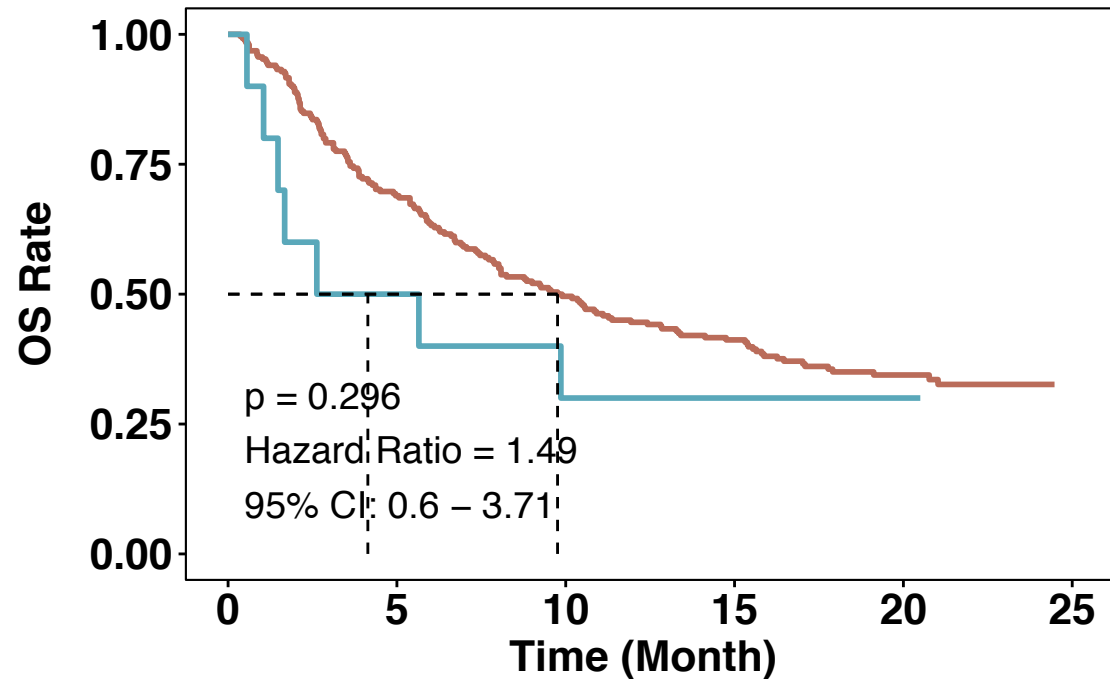


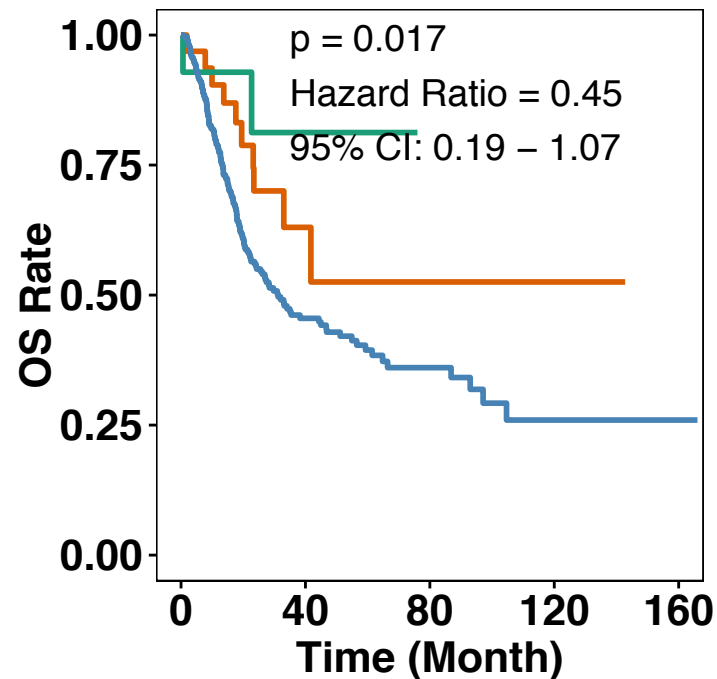
A ICI-treated BLCA



Number at risk

Non-Altered(254)	254	169	119	93	55	0
NCOR1-Altered(10)	10	5	3	3	1	0

B TCGA-BLCA



Number at risk

NCOR1-MT(34)	34	6	2	2	0
NCOR1-DEL(14)	14	5	0	0	0
Other(359)	359	70	20	4	3