

Tumor Proportion in Colon Cancer – Results from a Semiautomatic Image Analysis Approach.

Benedikt Martin¹, Bettina Monika Banner¹, Eva-Maria Schäfer¹, Patrick Mayr^{1, 2}, Matthias Anthuber³, Gerhard Schenkirsch⁴, Bruno Märkl¹

1 Institute of Pathology and Molecular Diagnostics, University Hospital Augsburg, Augsburg, Germany

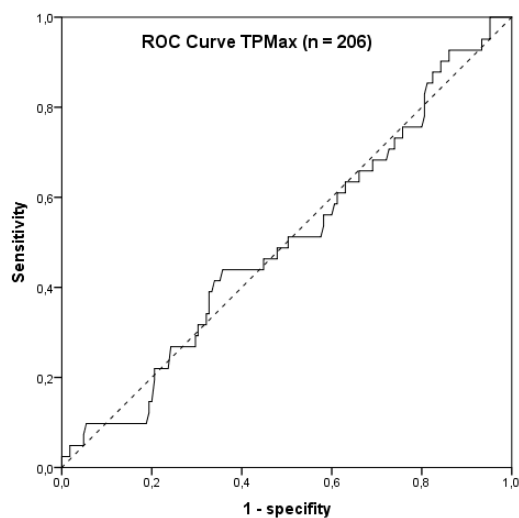
2 Department of Radiooncology, University Hospital Augsburg, Augsburg, Germany

3 Department of Visceral Surgery, University Hospital Augsburg, Augsburg, Germany

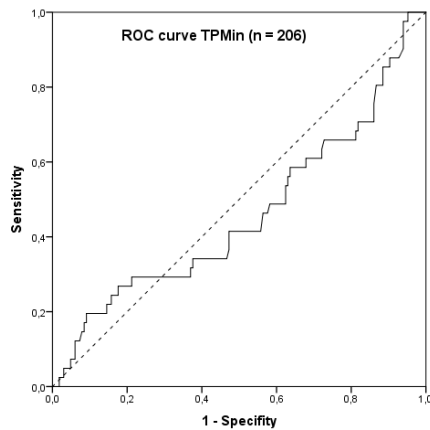
4 Tumor Data Management, University Hospital Augsburg, Augsburg, Germany

Supplement

S1 ROC Curve TPMax according to the occurrence of distant metastasis.



S2 ROC Curve TPMin according to the occurrence of distant metastasis.



S3 Comparison of exploration and validation set.

Supplement, table 4. Comparison of exploration and validation set

Variable	All n = 206	Exploration Set n = 104	Validation Set n = 102	P-value
Mean Age (years)	70.0 ± 11.3	70.3 ± 11.8	69.9 ± 10.9	0.506
Mean Follow-up (years)	5.3 ± 3.5	5.1 ± 3.3	5.5 ± 3.7	0.728
Mean FroTP	35.9 ± 17.9	35.7 ± 17.4	36.2 ± 18.7	0.953
Mean MinTP	32.3 ± 15.9	32.7 ± 15.4	32.0 ± 16.6	0.567
Mean MaxTP	71.0 ± 13.1	70.7 ± 12.5	71.4 ± 13.9	0.451
Lymphnode Harvest (n)	23.3 ± 13.2	23.4 ± 12.7	23.3 ± 13.8	0.829
Positive Lymphnodes (n)	1.2 ± 2.3	1.2 ± 2.6	1.1 ± 1.9	0.919
Sex				0.494
female	88 43%	42 40%	46 45%	
male	118 57%	62 60%	56 55%	
T status				0.372
T3	180 87%	93 89%	87 85%	
T4	26 13%	11 11%	15 15%	
Nodal Status				0.858
negative	128 62%	64 62%	64 63%	
positive	78 38%	40 39%	38 37%	
Blood Vessel Invasion				0.145
negative	186 90%	97 93%	89 87%	
positive	20 10%	7 7%	13 13%	
Lymphovascular Invasion				0.535
negative	171 83%	88 85%	83 81%	
positive	35 17%	16 15%	19 19%	
Grading				0.149
low grade	141 68%	76 73%	65 64%	
high grade	65 32%	28 27%	37 36%	
Tumor Budding				0.301
Bd 1	168 82%	88 84%	80 78%	
Bd 2	25 12%	9 9%	16 16%	
Bd 3	13 6%	7 7%	6 6%	
Location				0.266
right-sided	127 62%	68 65%	59 58%	
left-sided	79 38%	36 35%	43 42%	

MSI								0.104
	MSS	180	87%	87	84%	93	91%	
	MSI	26	13%	17	16%	9	9%	
Distant Metastasis								0.047
	no	165	80%	89	86%	76	75%	
	yes	41	20%	15	14%	26	26%	
Death								0.758
	no	121	59%	60	58%	61	60%	
	death	85	41%	44	42%	41	40%	
Five Year Survival				n = 84		n = 76		0.728
(n = 160)	survived	97	61%	52	62%	45	59%	
	death	63	39%	32	38%	31	41%	

Legend: p-values are shown for the comparison of the exploration and validation set

Abbreviations: MSI: microsatellite instable, mss: microsatellite stabel