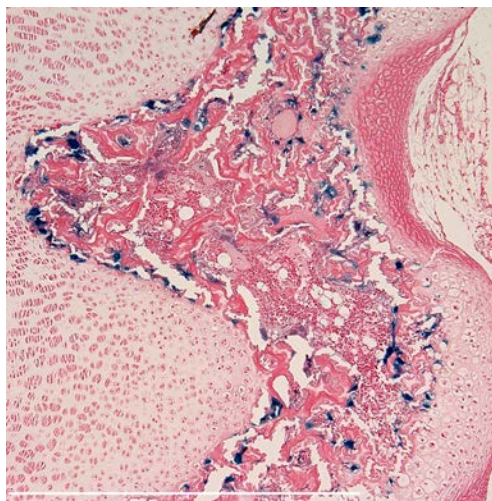
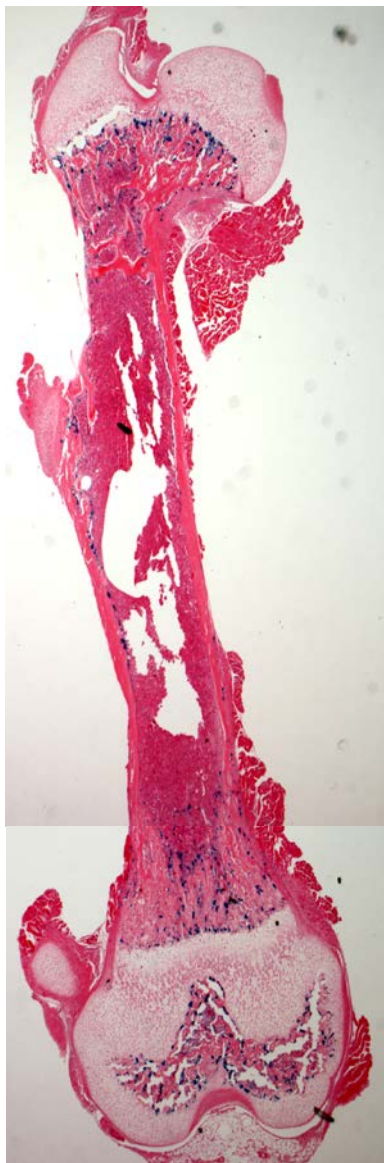
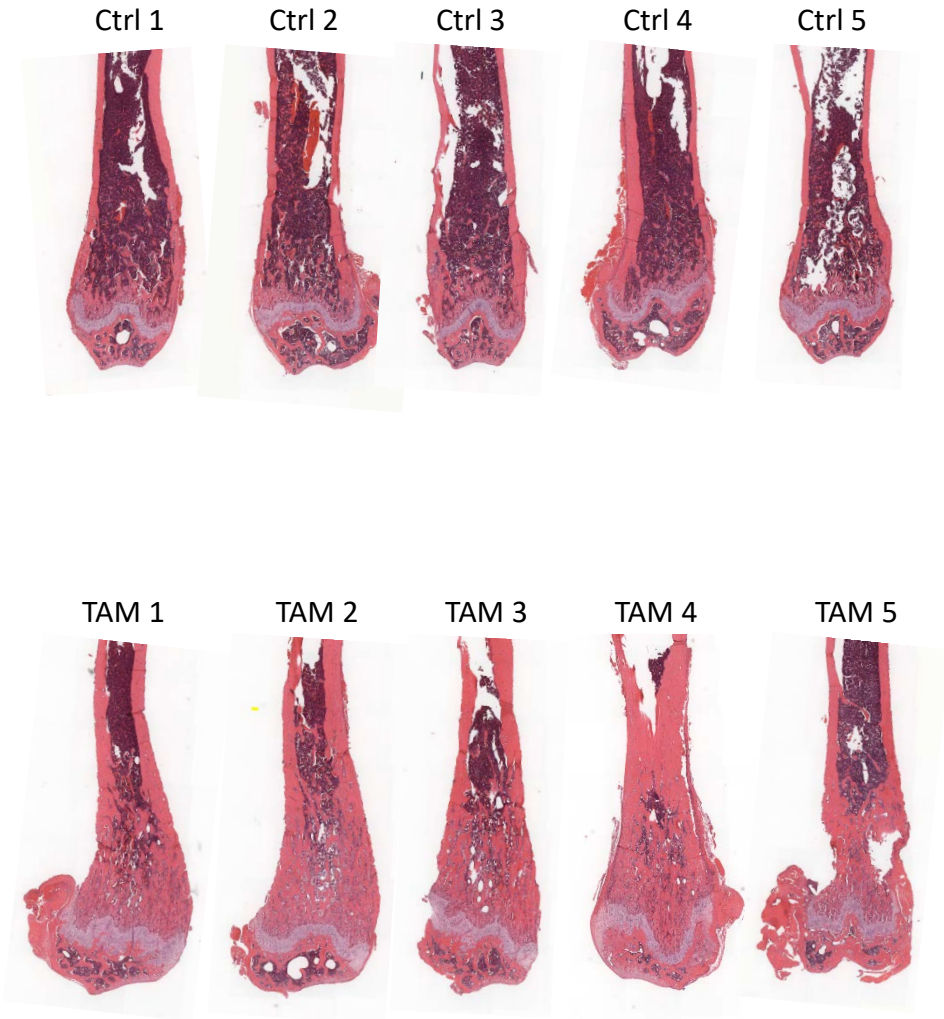


Supplemental 1 (s1). The activity of Cre recombinase of Prrx1-Cre/ERT2 was determined by crossing to Cre reporter strains, Rosa26<sup>LacZ</sup> (Prrx1-Cre/Rosa26<sup>LacZ</sup>)



Supplemental 2 (s2). *Prrx1-Cre/βCat<sup>fl/fl</sup>* mice with 5 injections of tamoxifen



Supplemental 3 (s3). Prrx1-Cre/ERT2 mice with 5 injections of tamoxifen

Ctrl-1



Ctrl-2



Ctrl-3



TAM-1



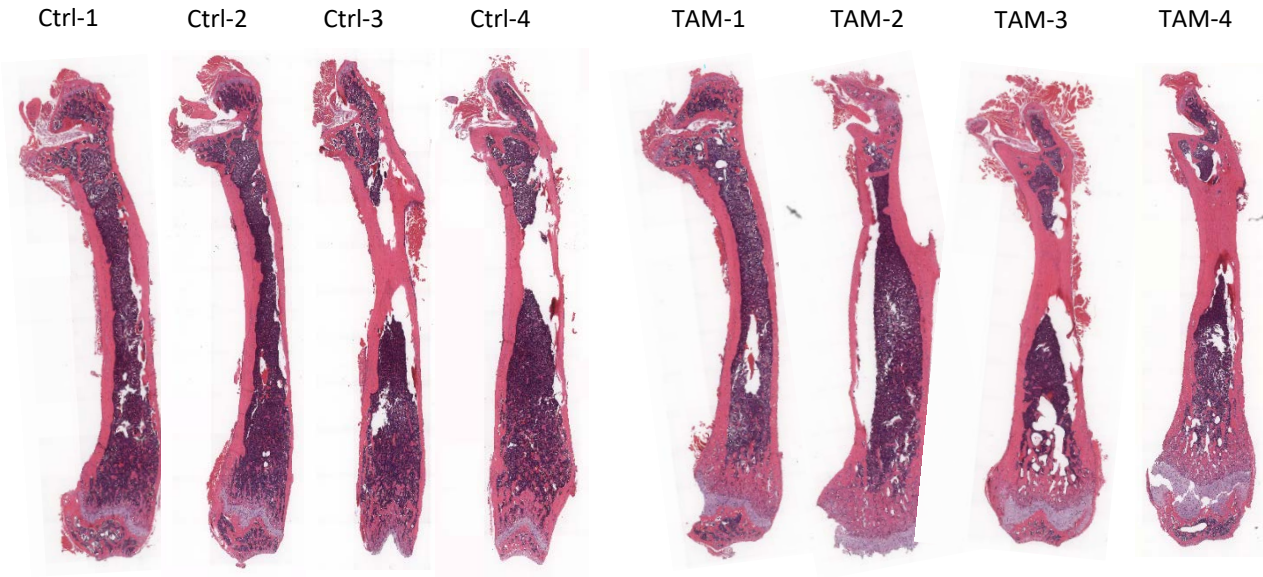
TAM-2



TAM-3



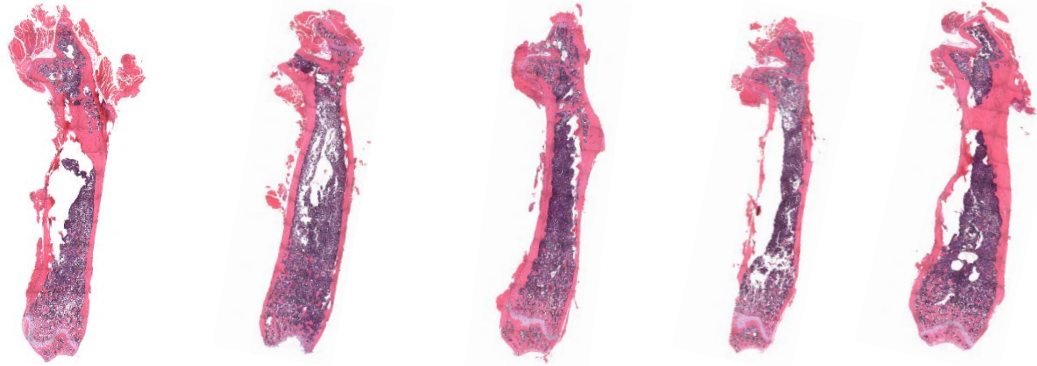
Supplemental 4 (s4). Prrx1-Cre/ERT2 mice with 2 injections of tamoxifen



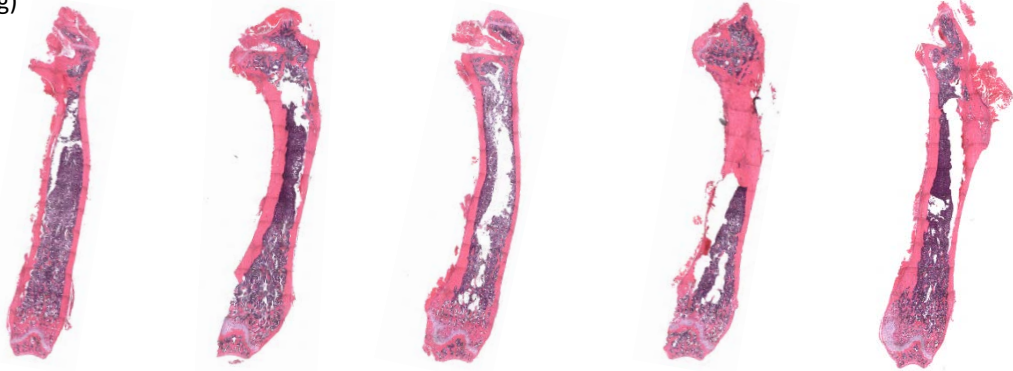
Supplemental 5 (s5). C57BL/6 mice with 3 different doses of tamoxifen  
(each dose x 4 injections)

H&E Staining

Ctrl



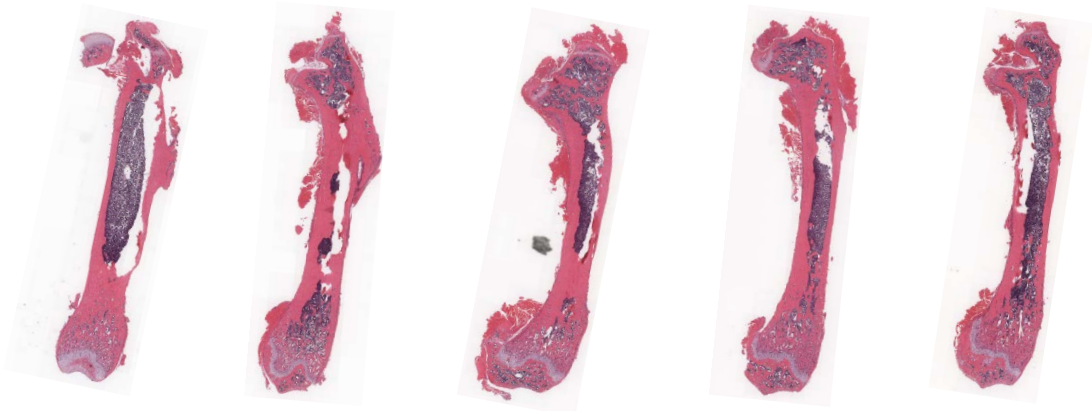
TAM (5mg/kg)



TAM (10mg/kg)



TAM (50mg/kg)



Supplemental 6 (s6). C57BL/6 mice with 3 different doses of tamoxifen (each dose x 4 injections)

TRAP Staining

Ctrl



TAM 5 mg/kg



TAM 10 mg/kg



TAM 50 mg/kg

