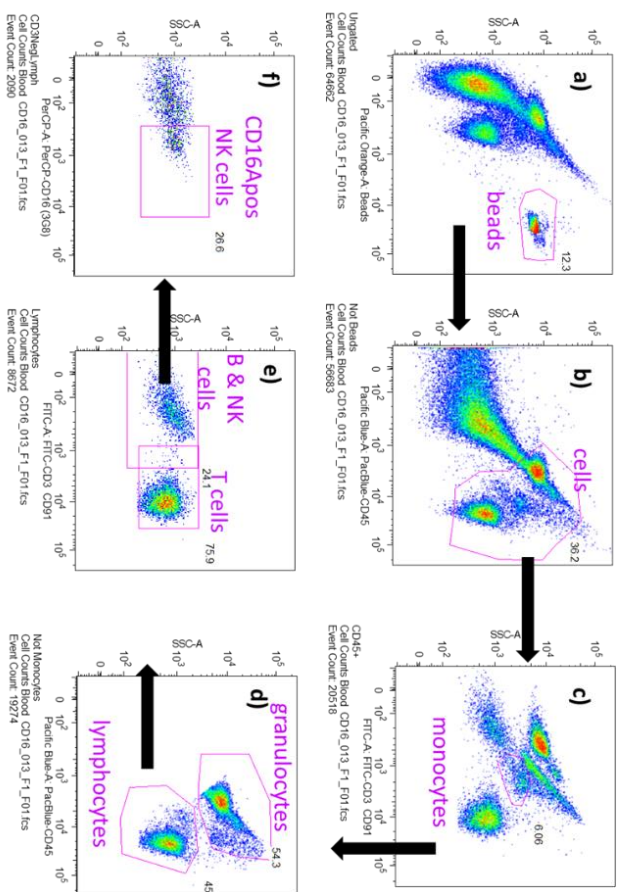
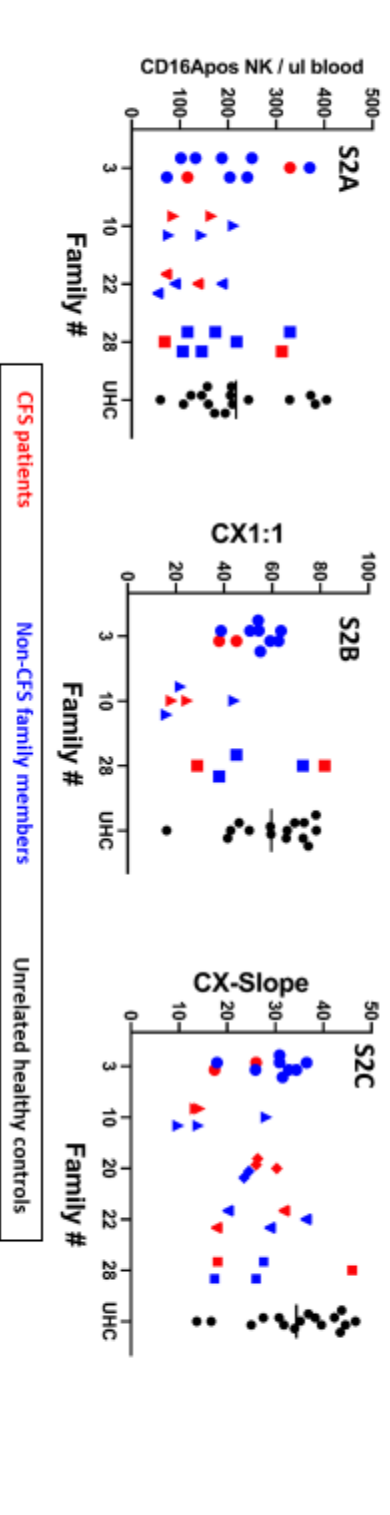


Supplemental Figure S1.
TruCount[®] determination of CD16Apos NK cells per ul blood.
 Sequential gating with FlowJo software: a) bead; b) intact cells; c) gating out of CD91pos monocytes; d) lymphocytes; e) CD3neg B & NK cells; f) CD16Apos NK cells.





Supplemental Figure S2. Distribution of ADCC values among CFS and family members without CFS within each family. Each family is indicated by different symbols. Red symbols indicate CFS patients and blue non-CFS family members. Black symbols indicate the unrelated healthy donors with bars for the mean values. **A. CD16A NK cell counts per μ l of blood.** The one-tailed P values for each vs. the UHCs were 0.34, 0.06, 0.02 and 0.23 for families 3, 10, 22 and 28, respectively. **B. CX1:1.** The one-tailed P values for each family vs. the unrelated healthy controls were 0.11, <0.001 and 0.26 for families 3, 10 and 28, respectively. **C. CX-slopes.** The one-tailed P values for each family vs. the unrelated healthy controls were 0.05, 0.001, 0.04, 0.07 and 0.09, for families 3, 10, 20, 22 and 28, respectively.

Supplemental Figure S3. Linear ADCC is illustrate for one unrelated healthy control and one CFS patient. Black and red arrows indicate the killing at the CD16Apos NK cell to Daudi targets with antibody ratio of 1:1, The \log_{10} value for the 1:1 ratio is indicated by the gray arrow. Cytotoxic activity in the absence of antibody was negligible and is not illustrated.

