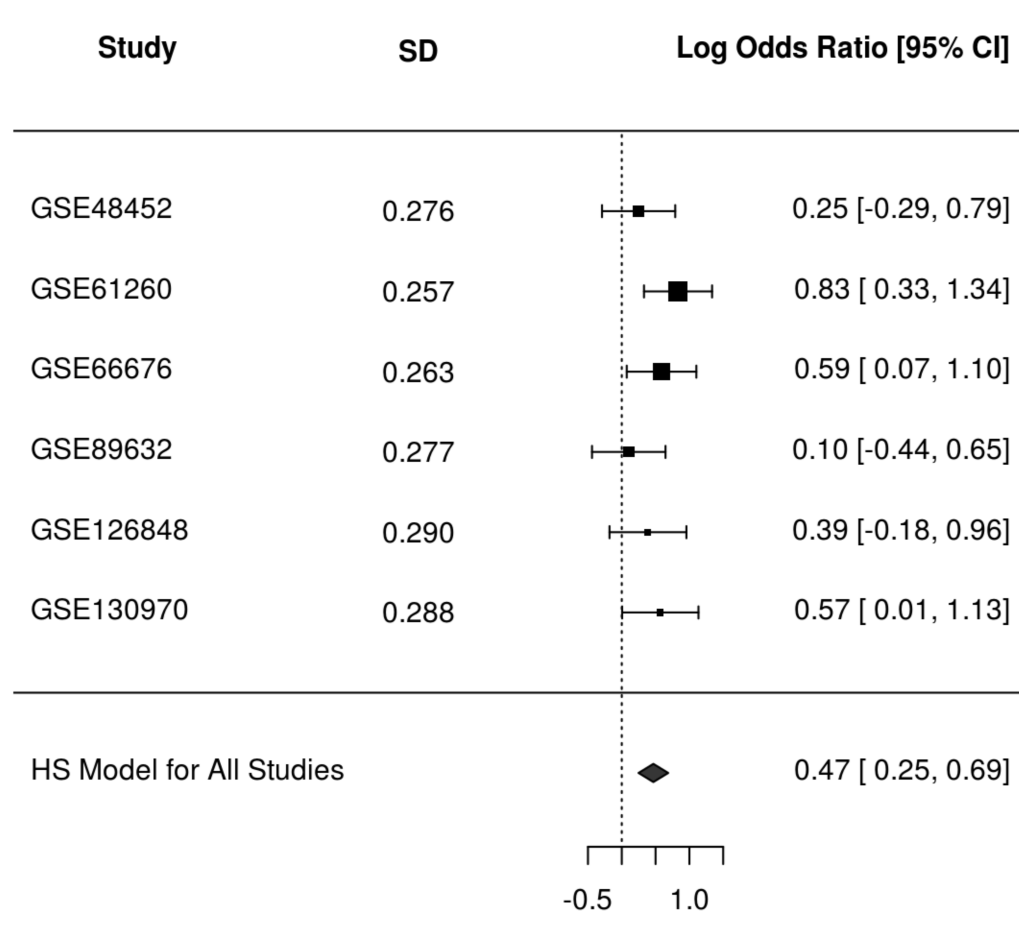
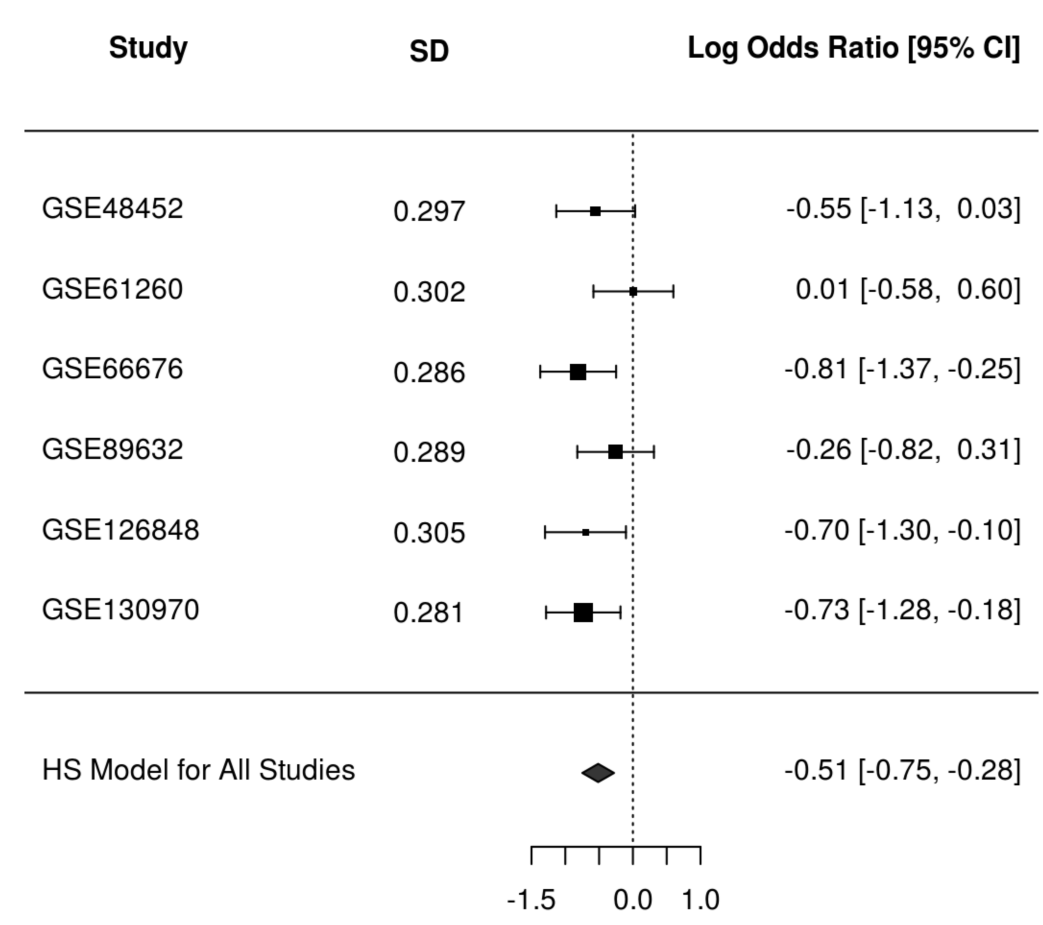


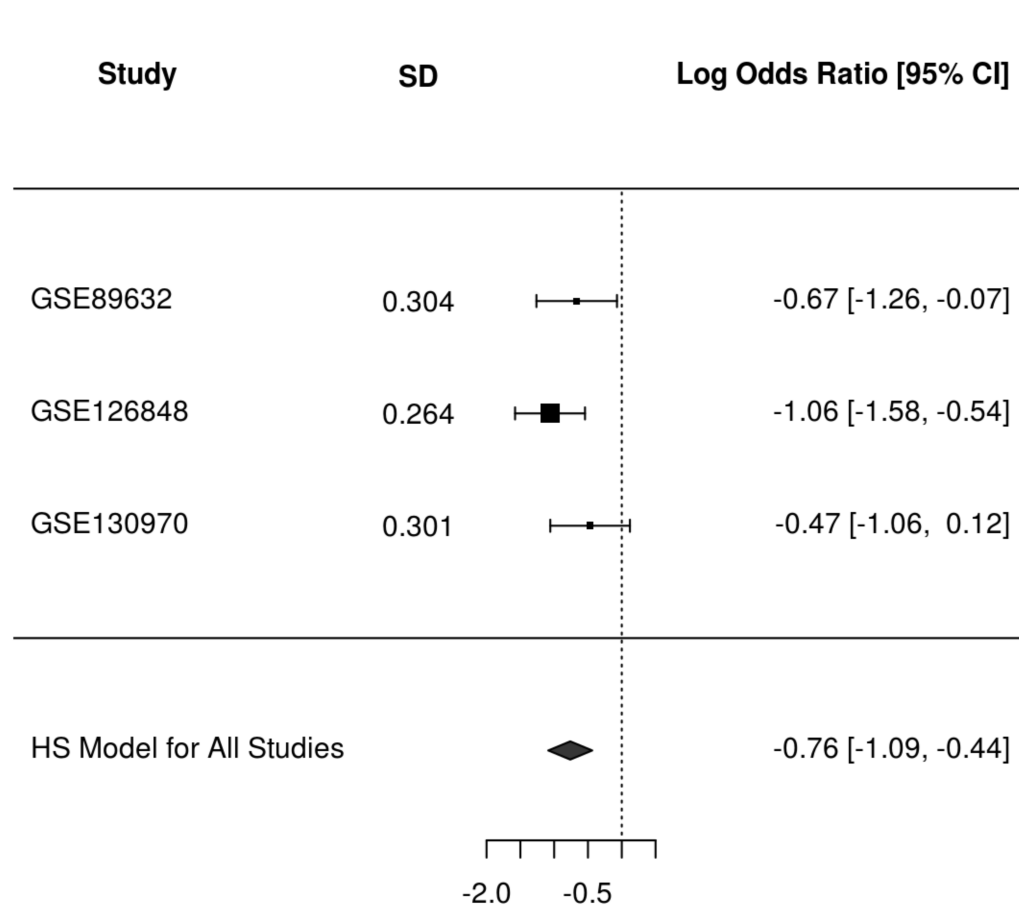
**GO:0071352
(cellular response to interleukin-2)**



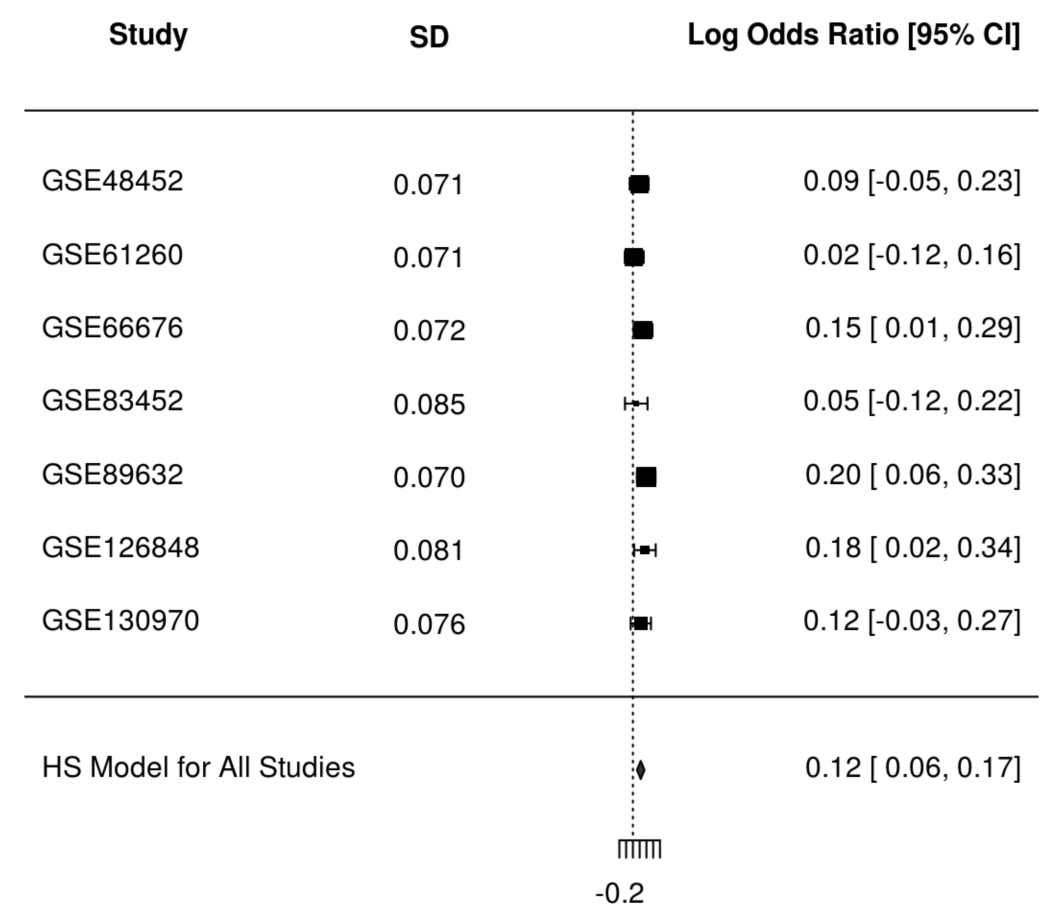
**GO:0090177
(establishment of planar polarity involved in neural tube closure)**



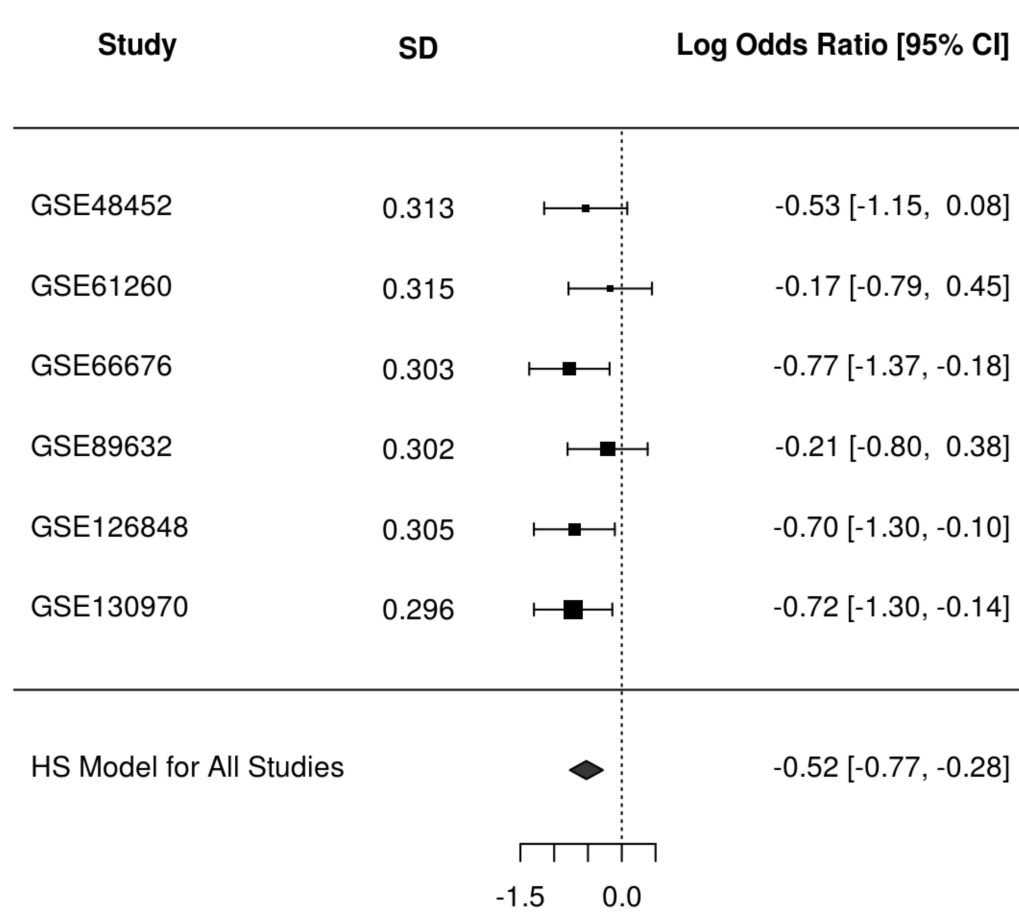
**GO:1900165
(negative regulation of interleukin-6 secretion)**



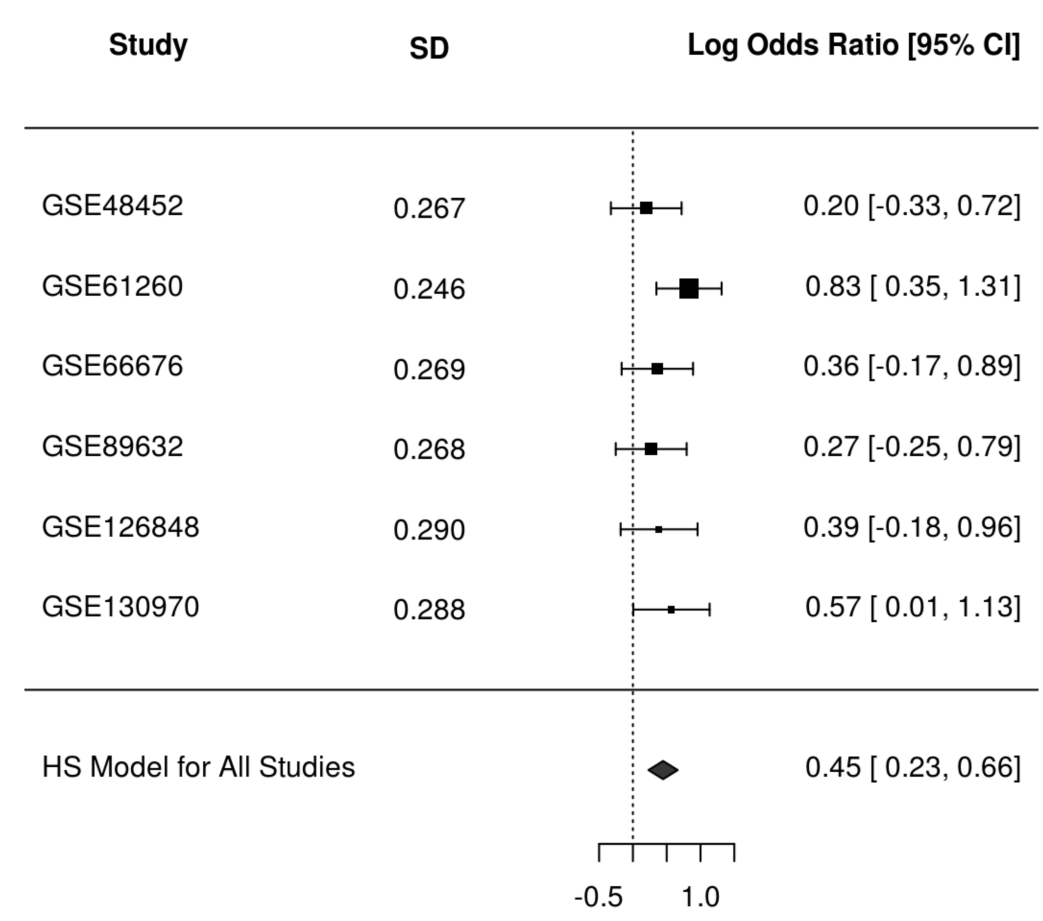
**GO:1901215
(negative regulation of neuron death)**



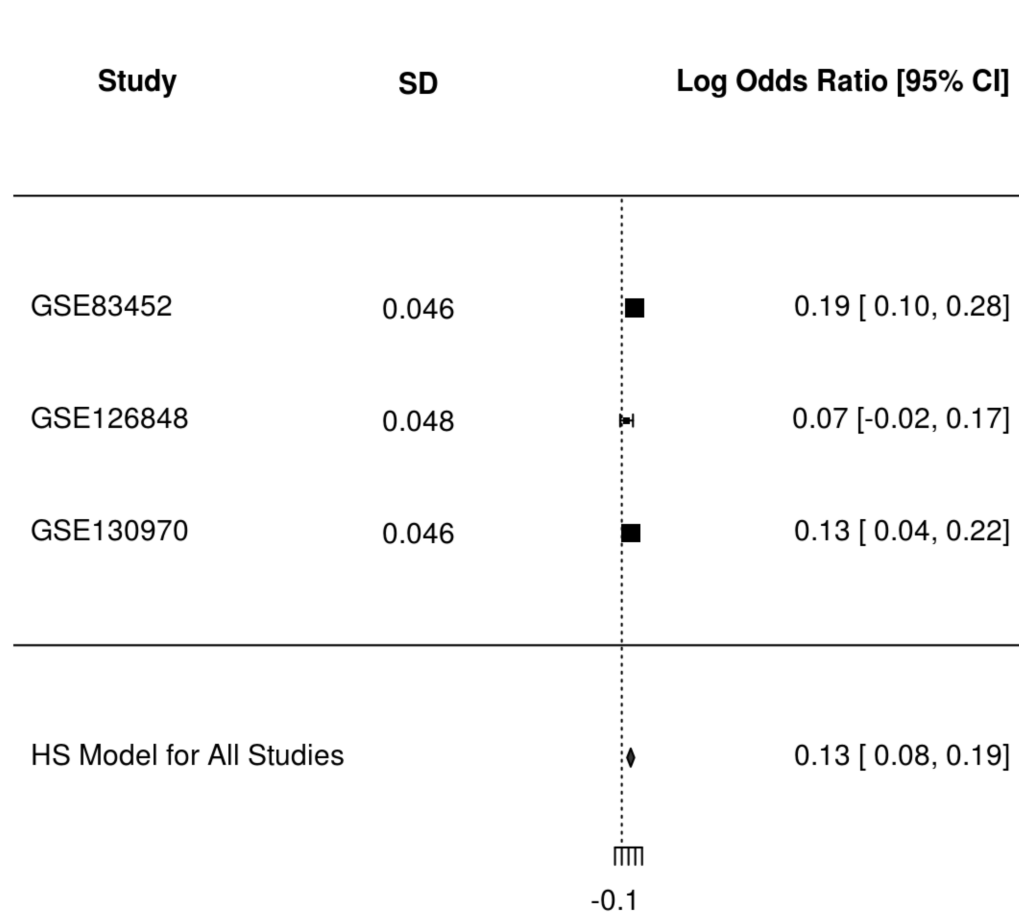
**GO:0090178
(regulation of establishment of planar polarity involved in n...)**



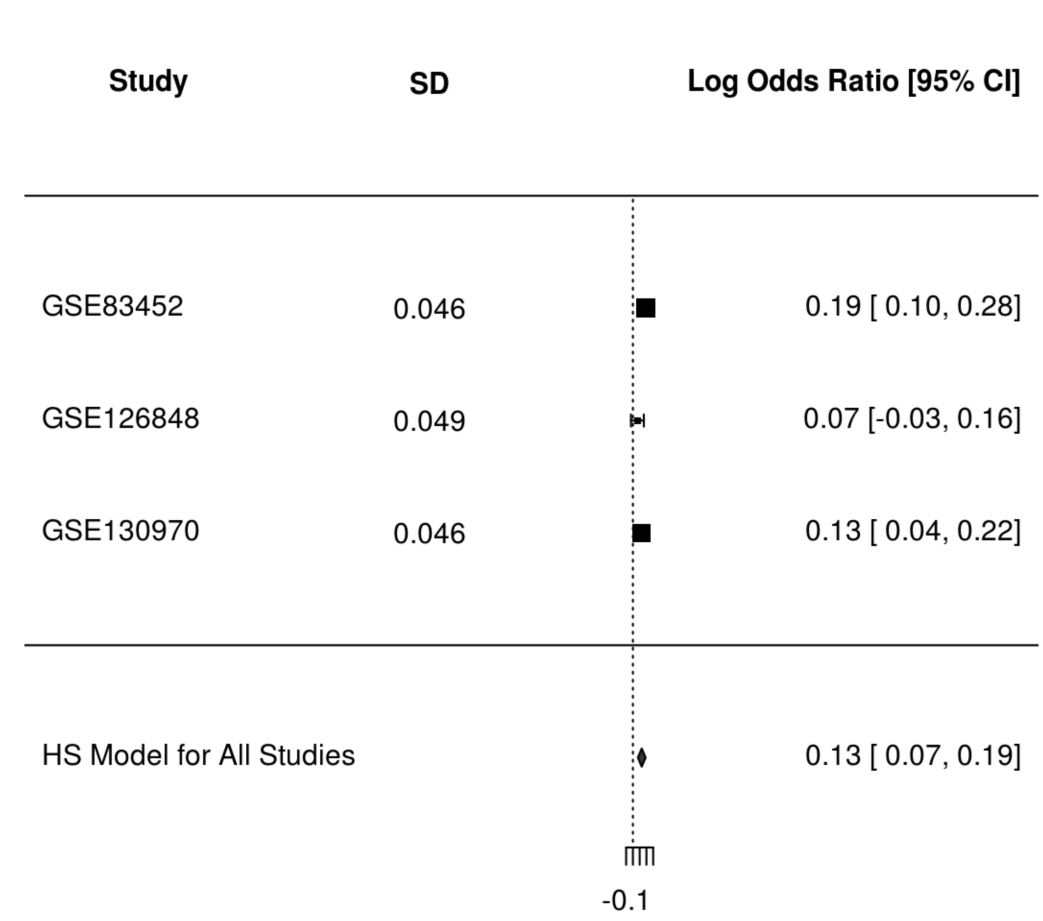
**GO:0070669
(response to interleukin-2)**



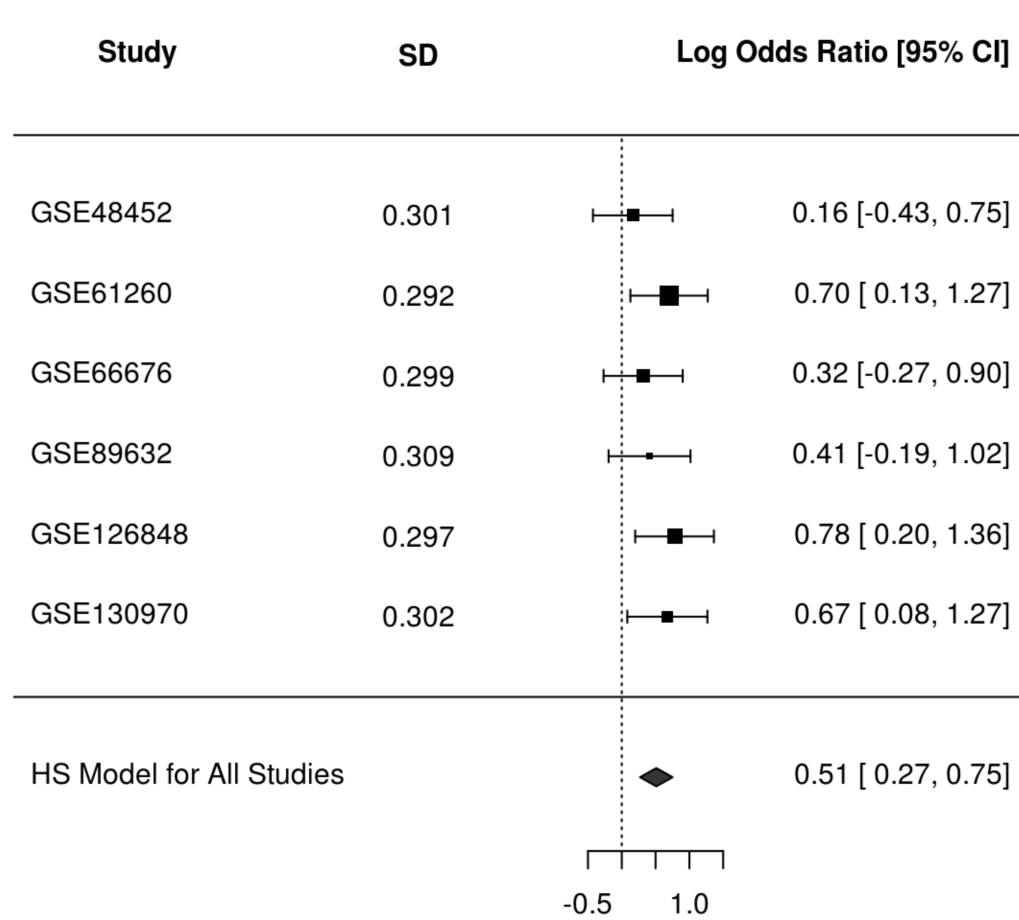
**GO:0001012
(RNA polymerase II regulatory region DNA binding)**



**GO:0000977
(RNA polymerase II regulatory region sequence-specific DNA bi...)**



**GO:0017166
(vinculin binding)**



Supplementary Figure 2. Forest plots for significant GO terms from our functional gene meta-analysis.