

Figure S1: ROC curves for Experiment 1. ROC curves for each one of the FOT parameters - Control Group versus Patients with Sclerosis and Normal Spirometry (CGvsPSNS).

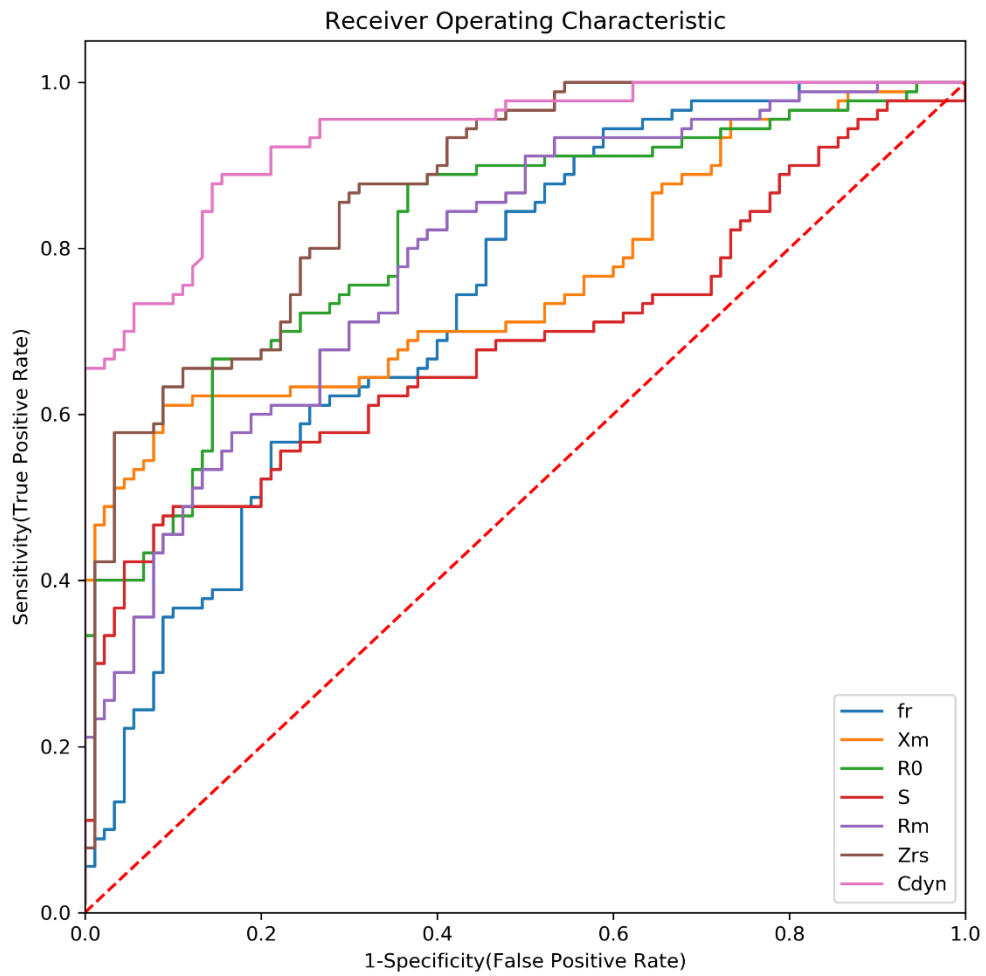


Figure S2: ROC curves for Experiment 1. ROC curves for each one of the FOT parameters - Control Group versus Patients with Sclerosis and Altered Spirometry (CGvsPSAS).

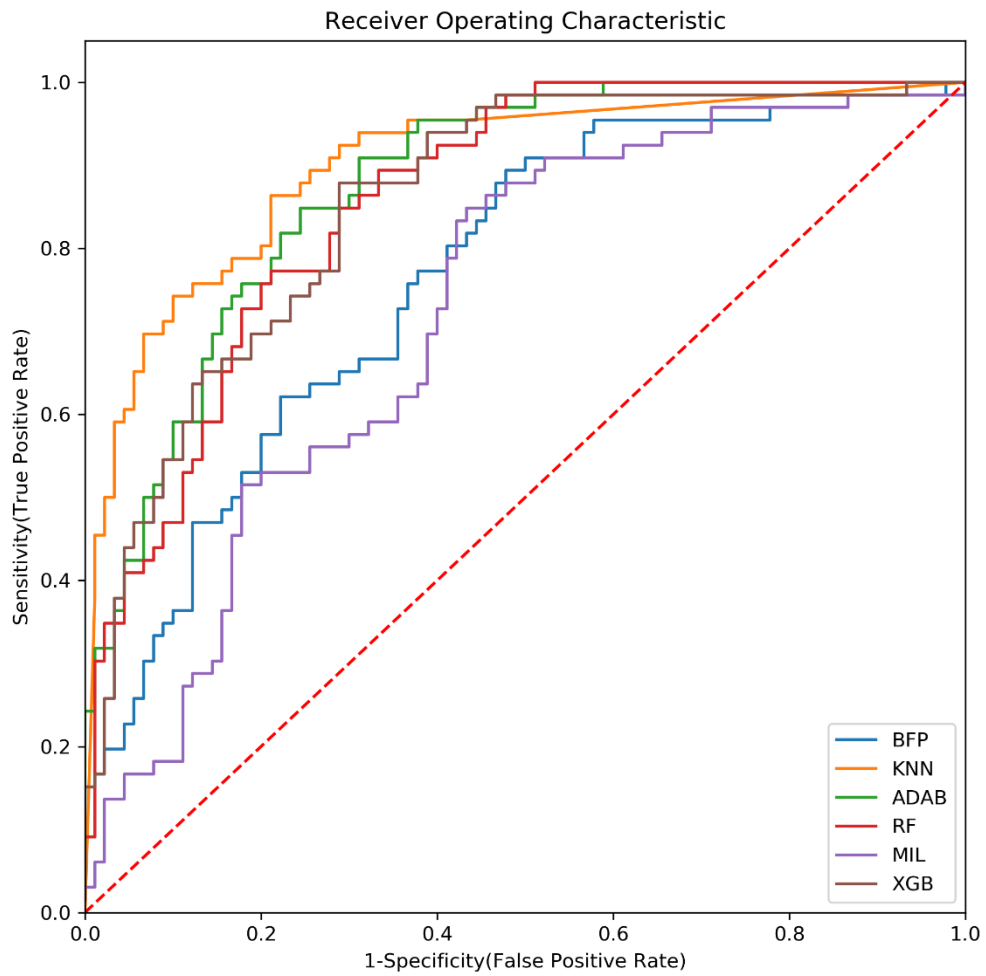


Figure S3: ROC curves for Experiment 2. ROC curves for each one of the FOT parameters - Control Group versus Patients with Sclerosis and Normal Spirometry (CGvsPSNS).

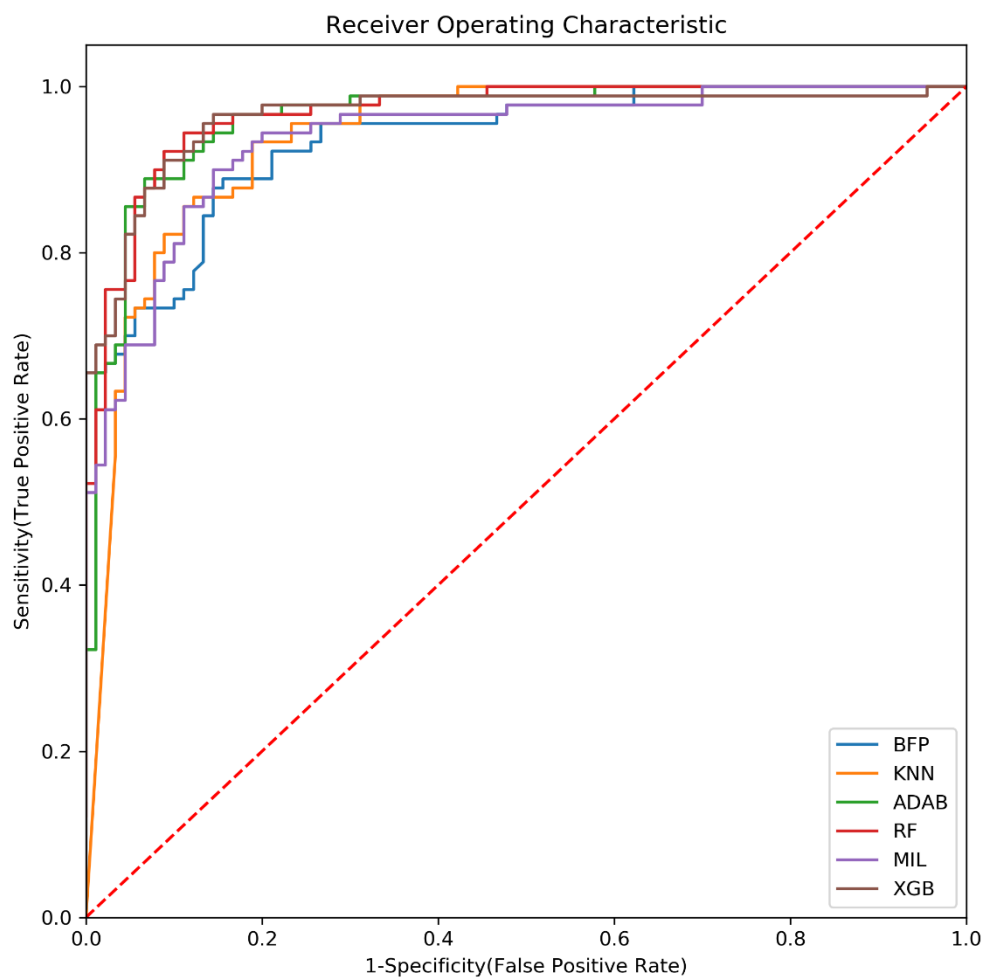


Figure S4: ROC curves for Experiment 2. ROC curves for each one of the FOT parameters - Control Group versus Patients with Sclerosis and Altered Spirometry (CGvsPSAS).

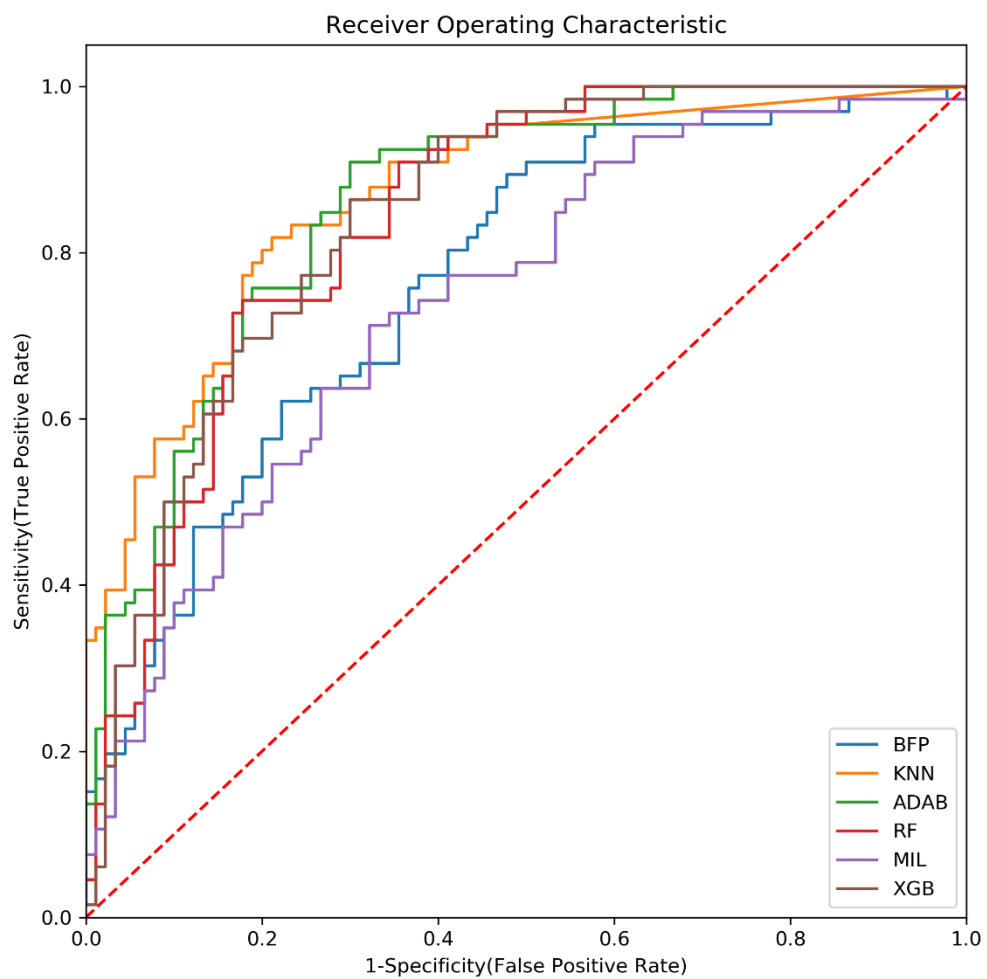


Figure S5: ROC curves for Experiment 3. ROC curves for each one of the FOT parameters - Control Group versus Patients with Sclerosis and Normal Spirometry (CGvsPSNS).

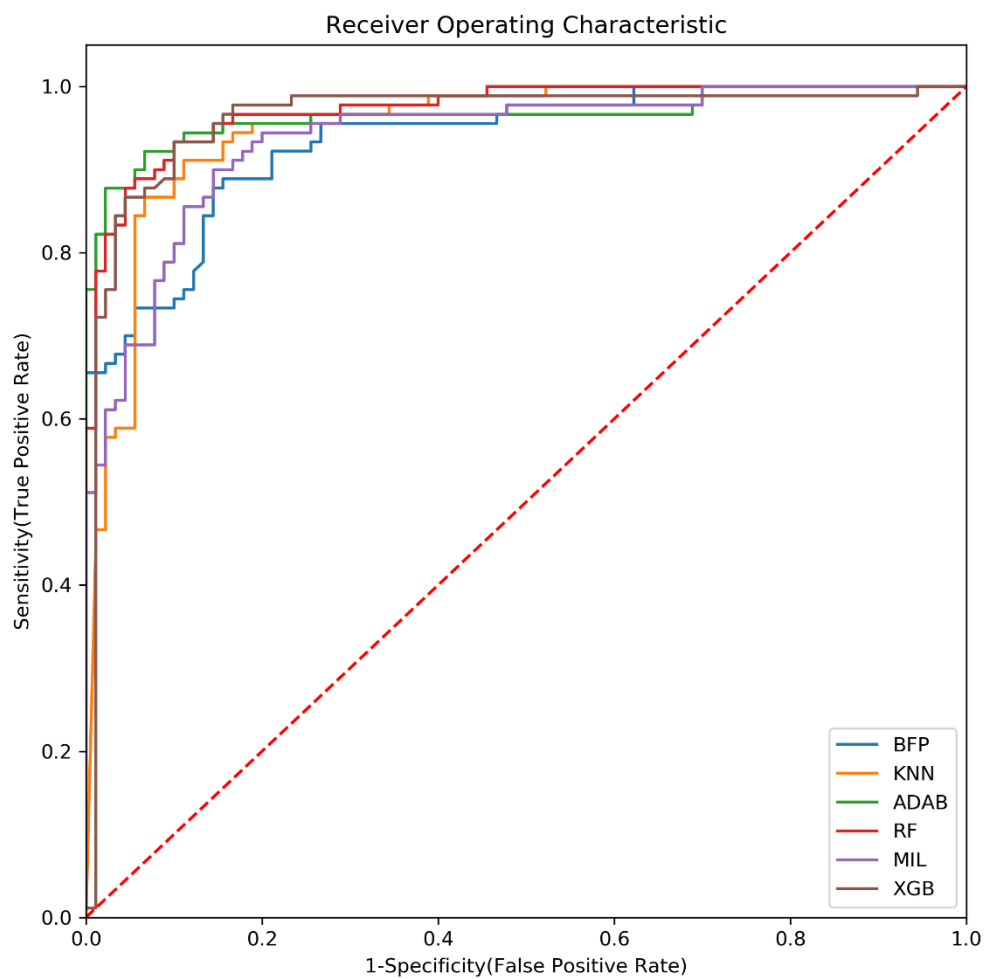


Figure S6: ROC curves for Experiment 3. ROC curves for each one of the FOT parameters - Control Group versus Patients with Sclerosis and Altered Spirometry (CGvsPSAS).

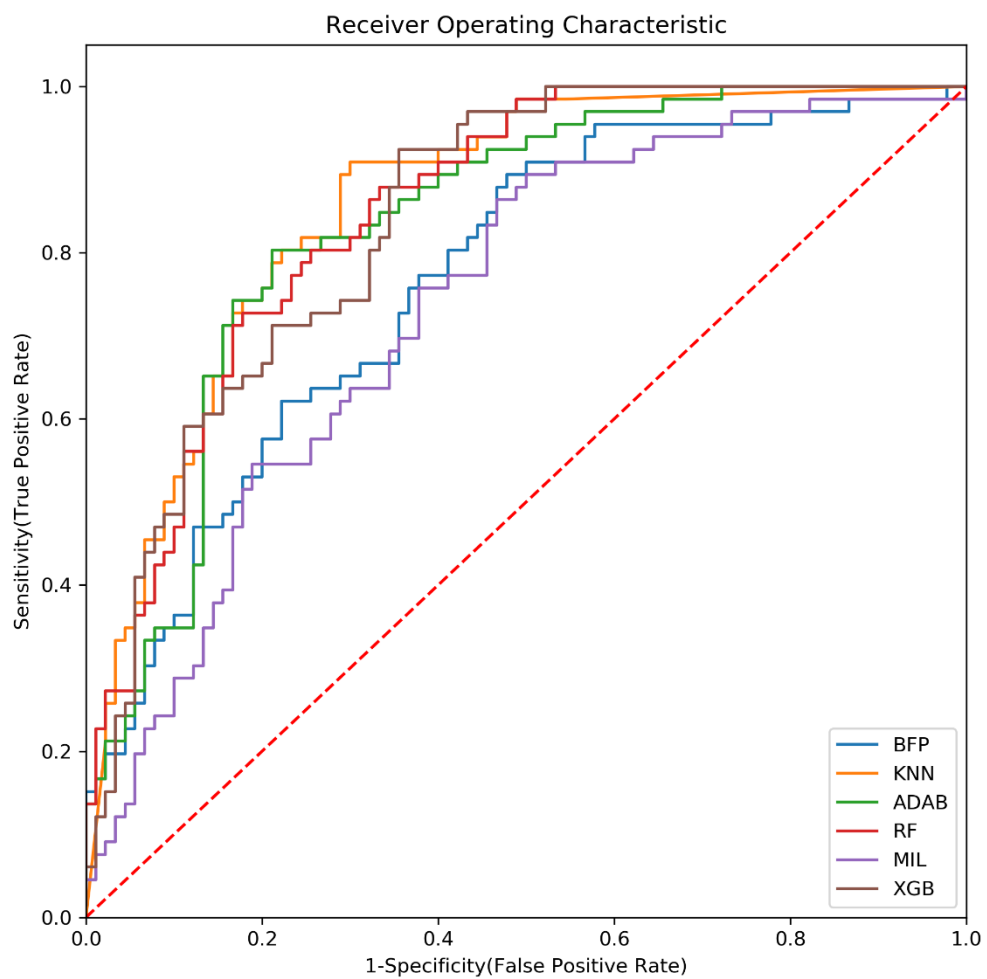


Figure S7: ROC curves for Experiment 4. ROC curves for each one of the FOT parameters - Control Group versus Patients with Sclerosis and Normal Spirometry (CGvsPSNS).

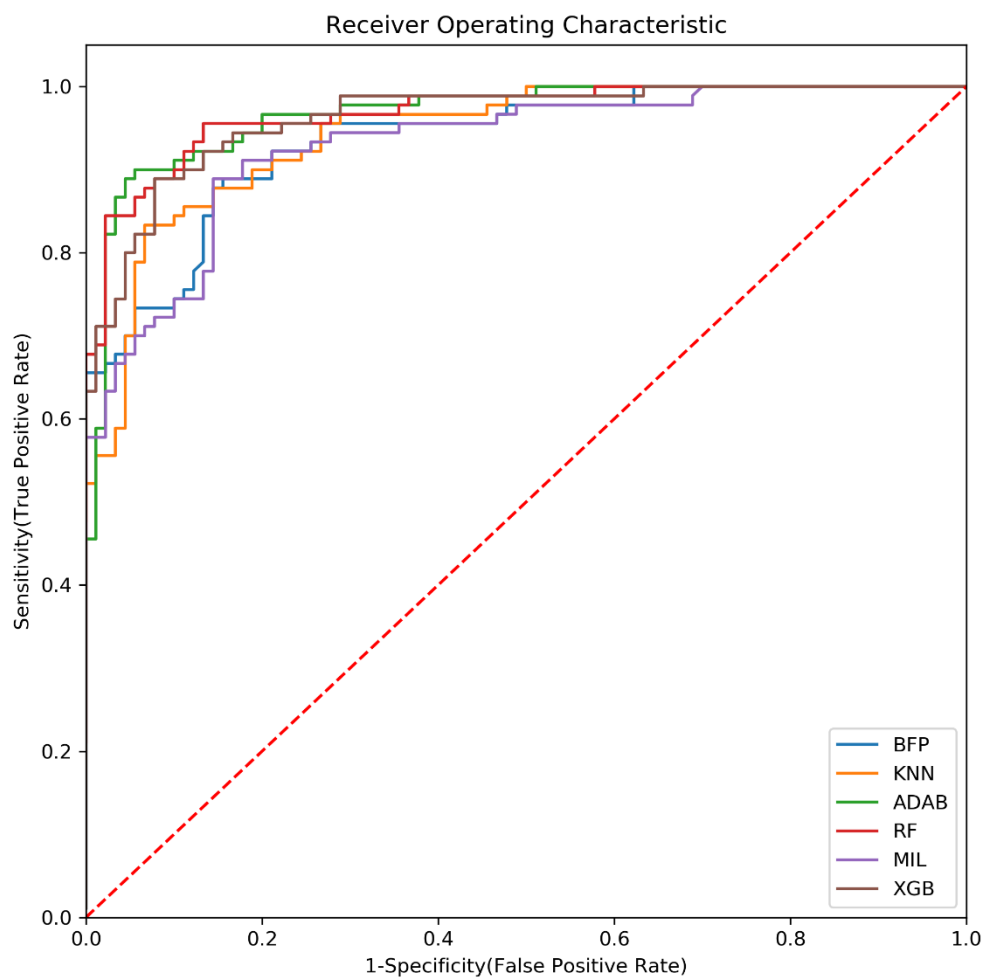


Figure S8: ROC curves for Experiment 4. ROC curves for each one of the FOT parameters - Control Group versus Patients with Sclerosis and Altered Spirometry (CGvsPSAS).



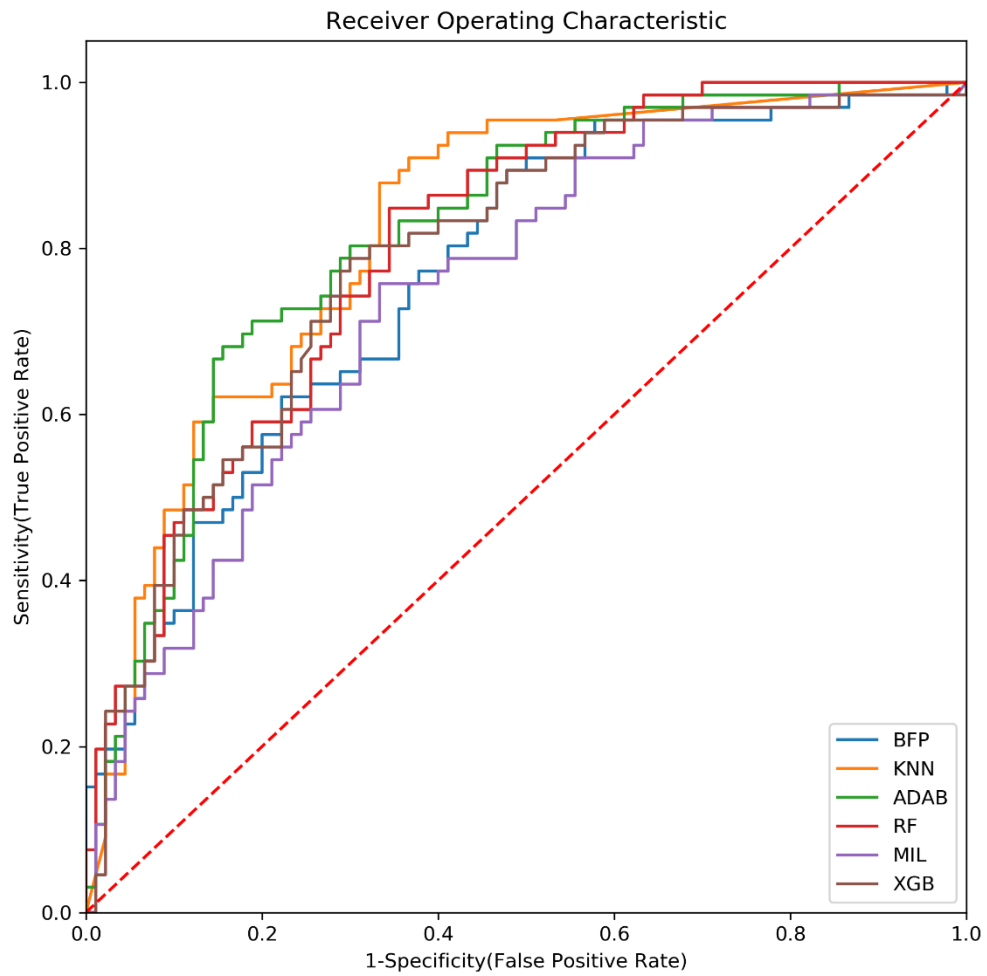


Figure S9: ROC curves for Experiment 5. ROC curves for each one of the FOT parameters - Control Group versus Patients with Sclerosis and Normal Spirometry (CGvsPSNS).

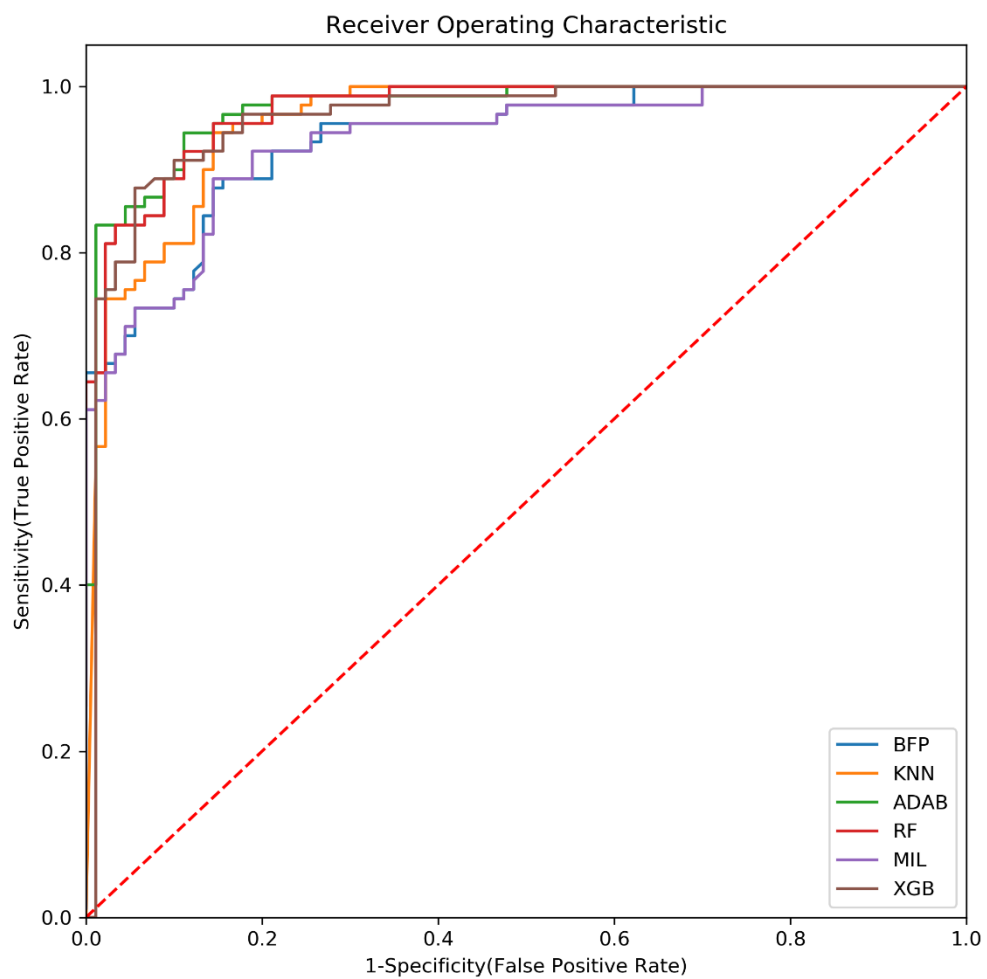


Figure S10: ROC curves for Experiment 5. ROC curves for each one of the FOT parameters - Control Group versus Patients with Sclerosis and Altered Spirometry (CGvsPSAS).

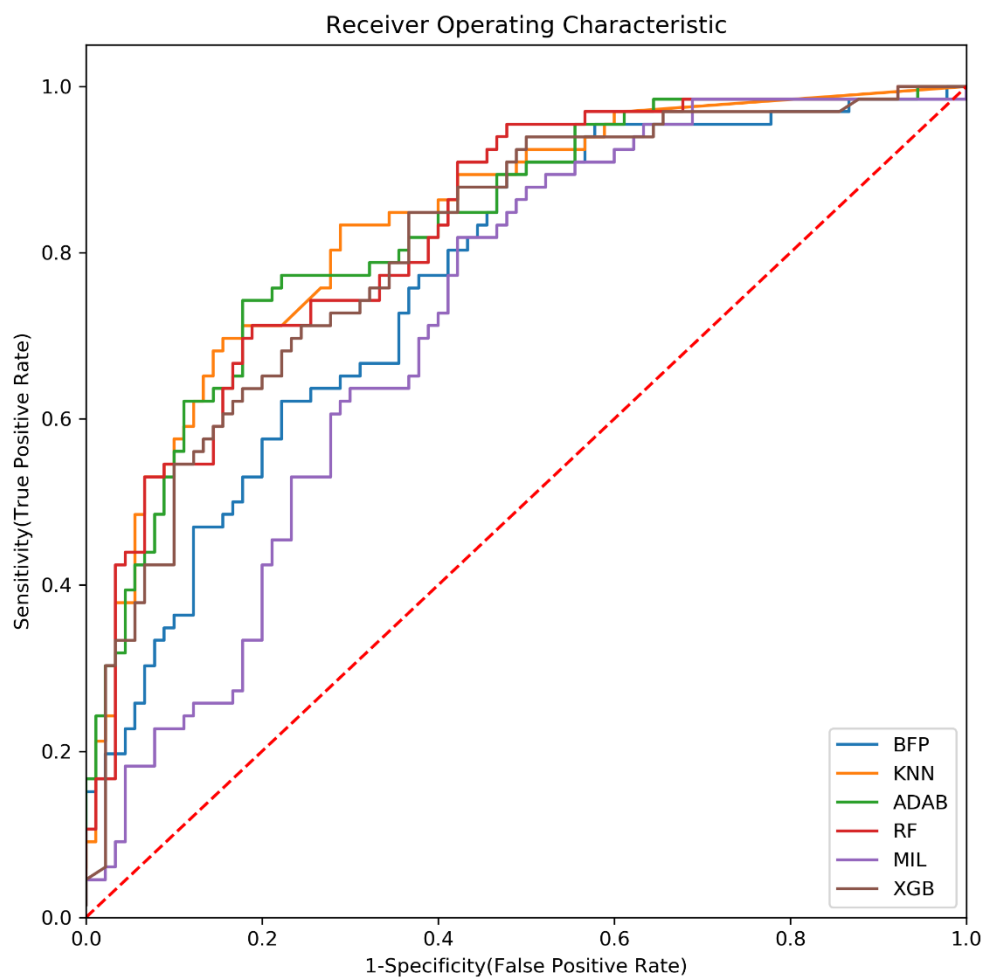


Figure S11: ROC curves for Experiment 6. ROC curves for each one of the FOT parameters - Control Group versus Patients with Sclerosis and Normal Spirometry (CGvsPSNS).

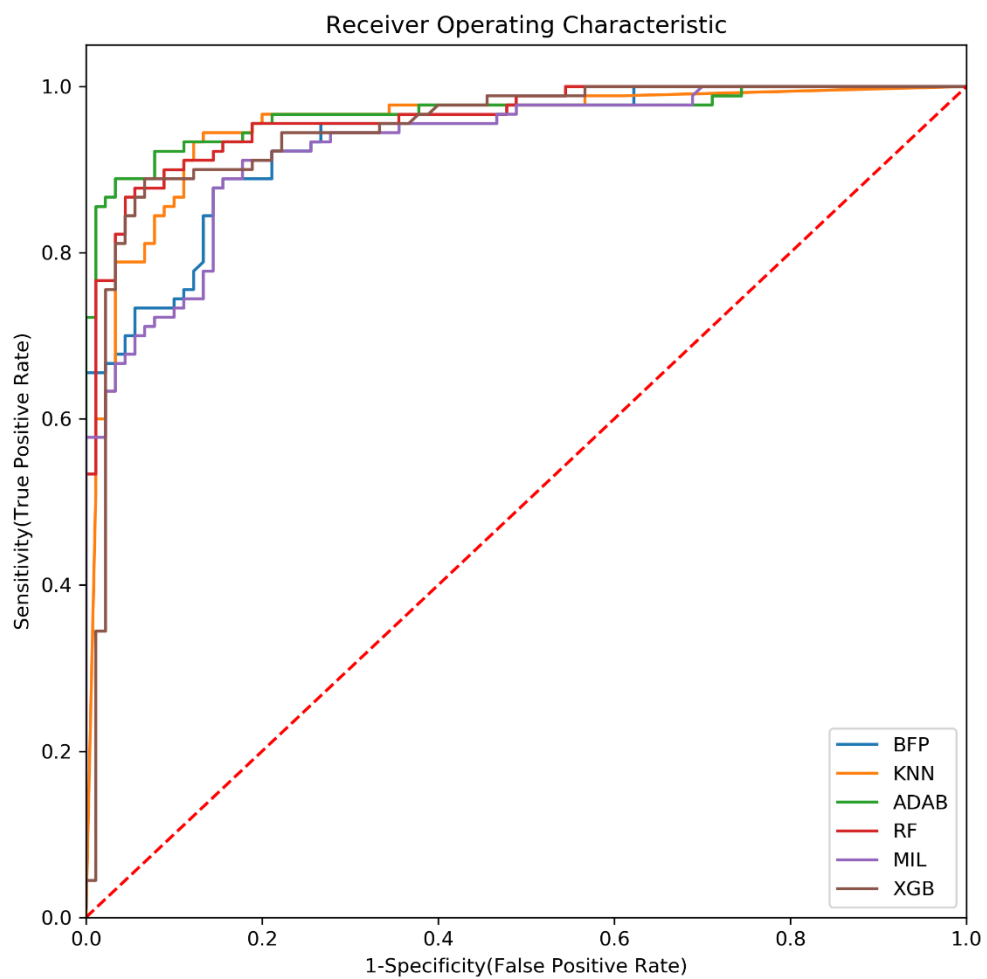


Figure S12: ROC curves for Experiment 6. ROC curves for each one of the FOT parameters - Control Group versus Patients with Sclerosis and Altered Spirometry (CGvsPSAS).

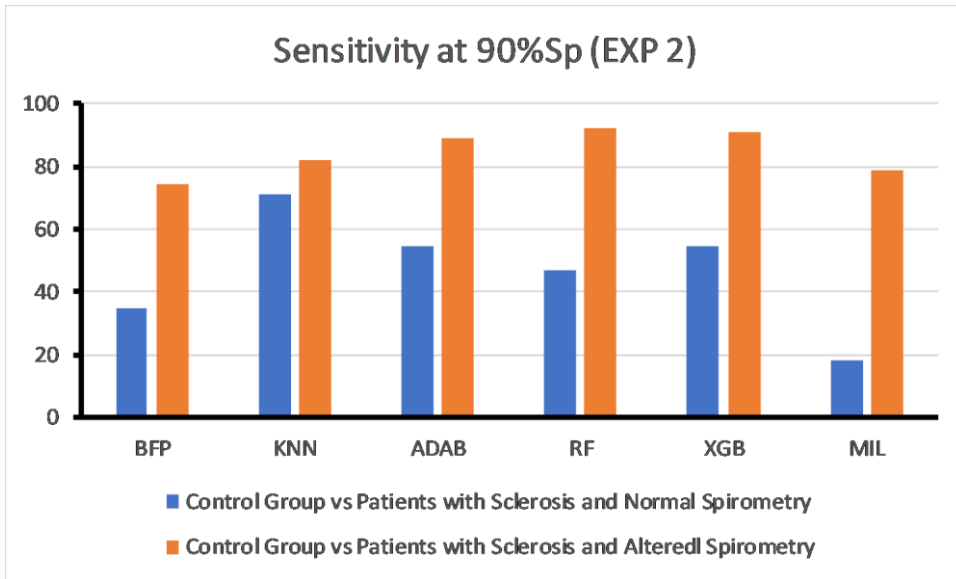


Figure S13: Sensitivity at 90% Sp for Experiment 2.

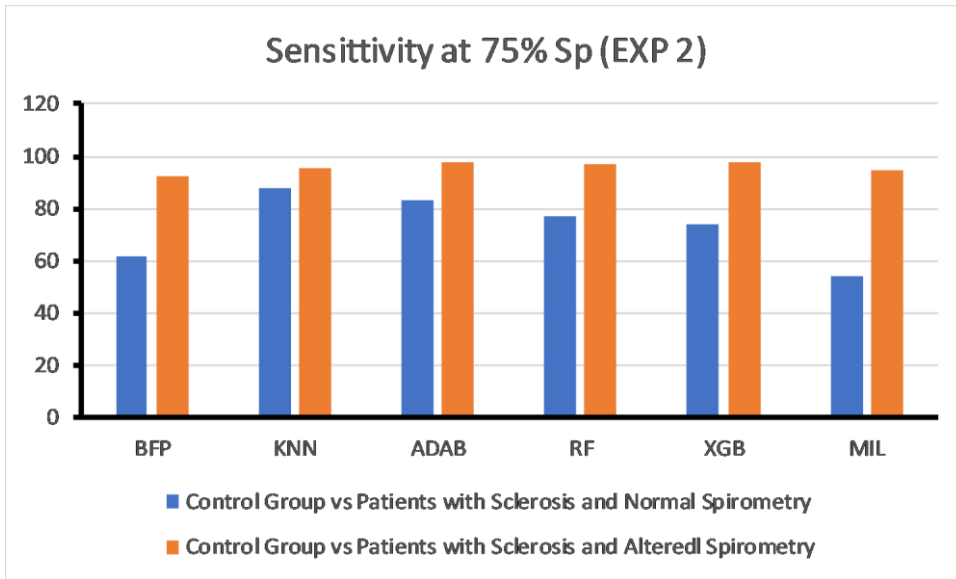


Figure S14: Sensitivity at 75% Sp for Experiment 2.

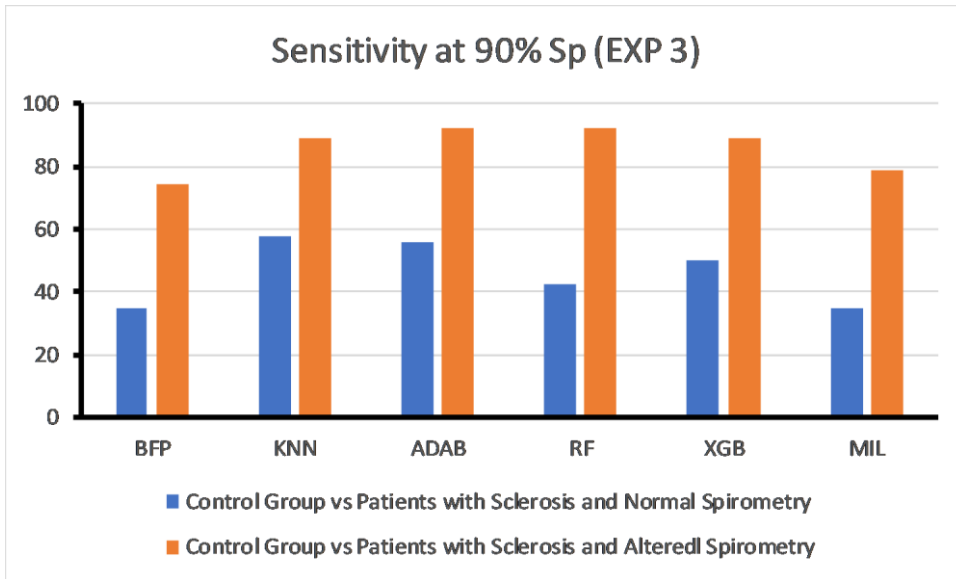


Figure S15: Sensitivity at 90% Sp for Experiment 3.

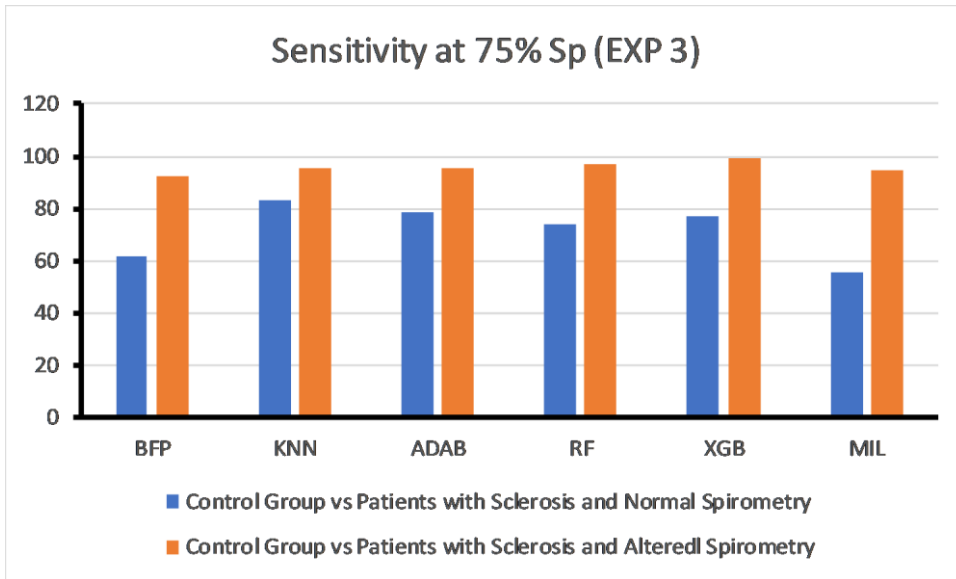


Figure S16: Sensitivity at 75% Sp for Experiment 3.



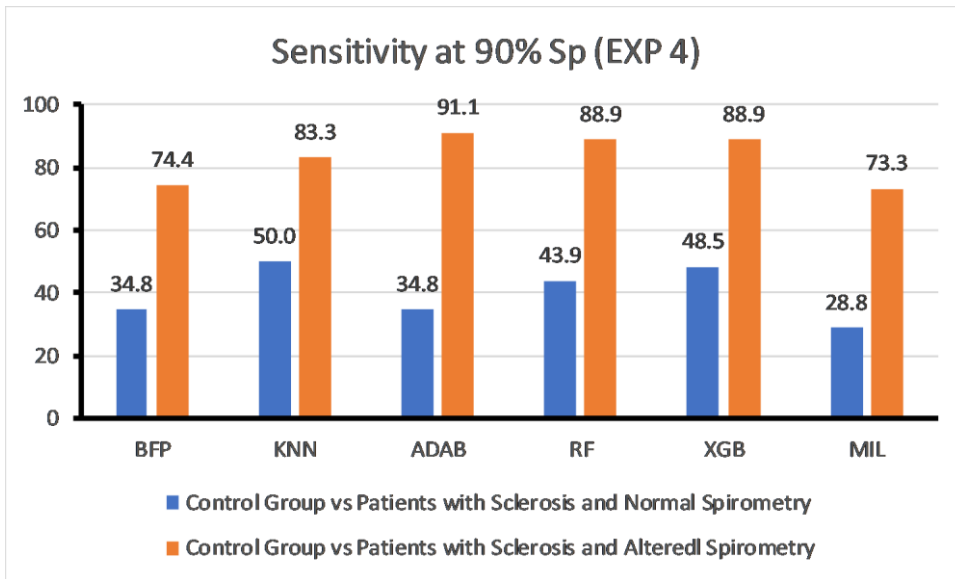


Figure S17: Sensitivity at 90% Sp for Experiment 4.

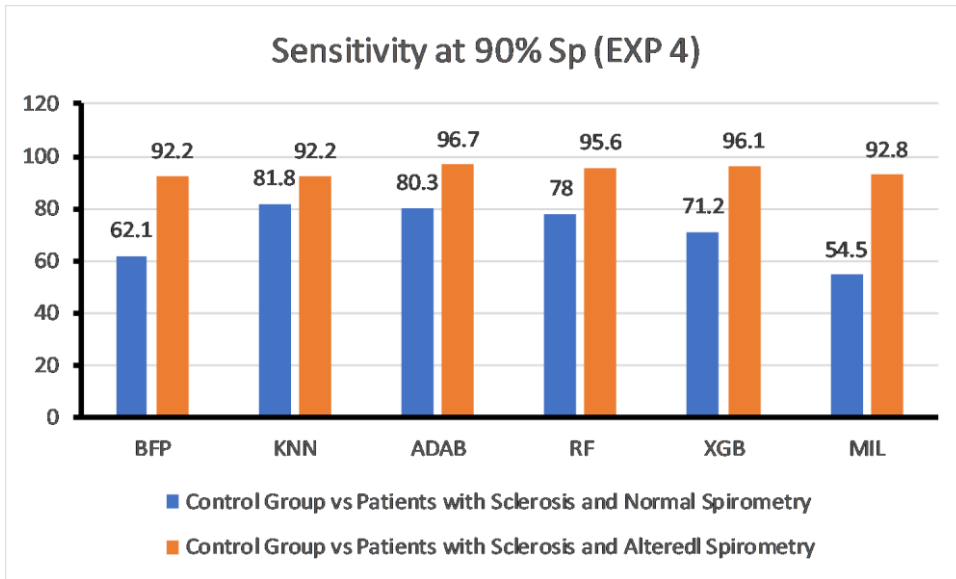


Figure S18: Sensitivity at 75% Sp for Experiment 4.

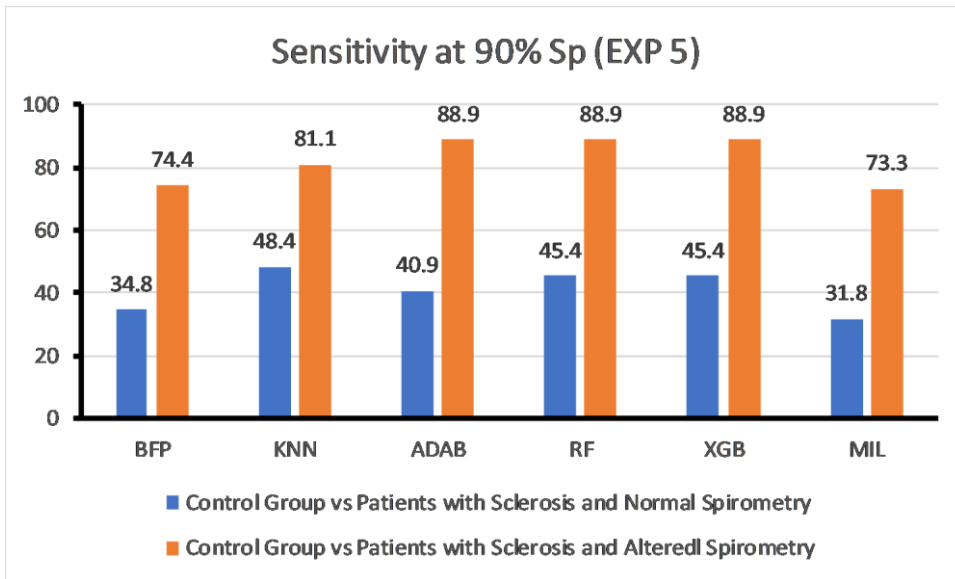


Figure S19: Sensitivity at 90% Sp for Experiment 5.

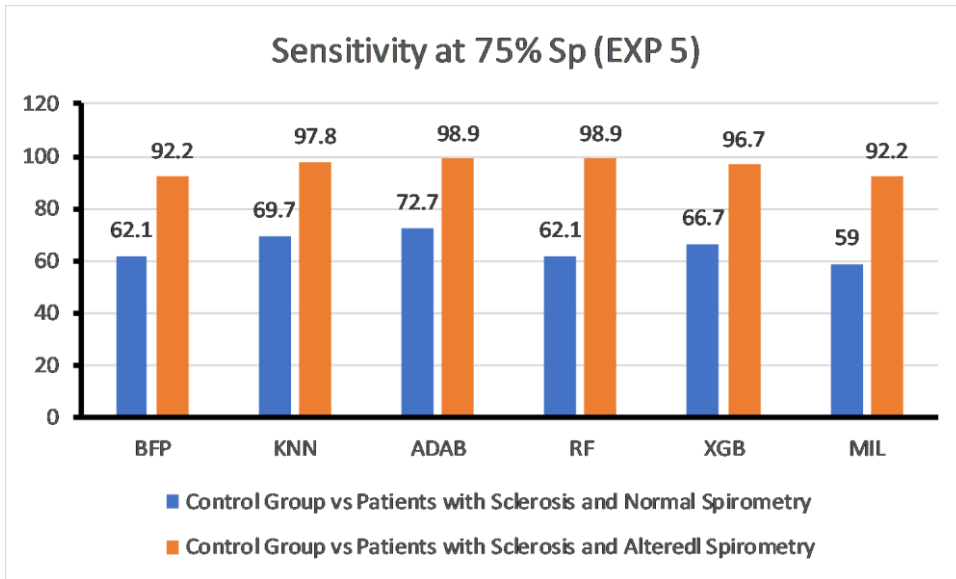


Figure S20: Sensitivity at 75% Sp for Experiment 5.

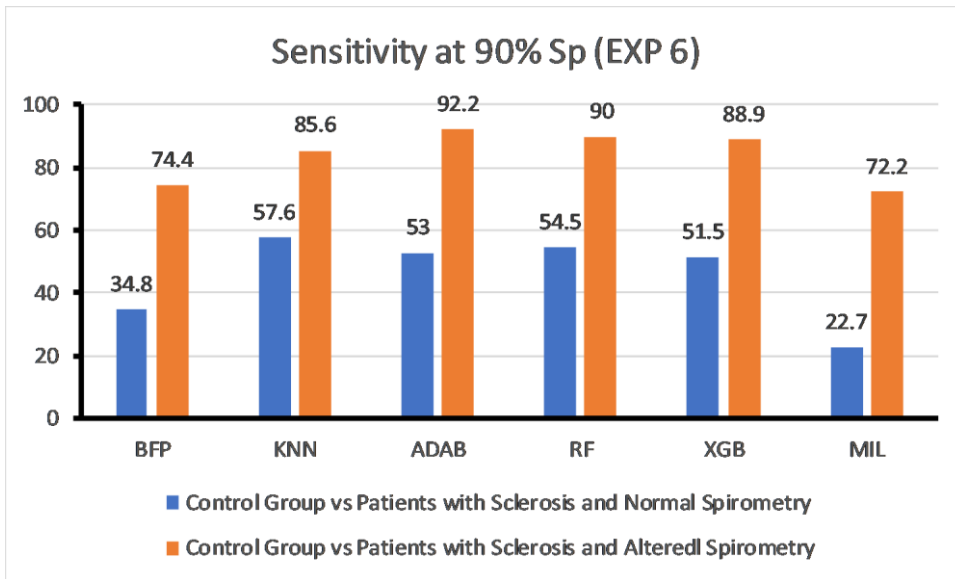


Figure S21: Sensitivity at 90% Sp for Experiment 6.

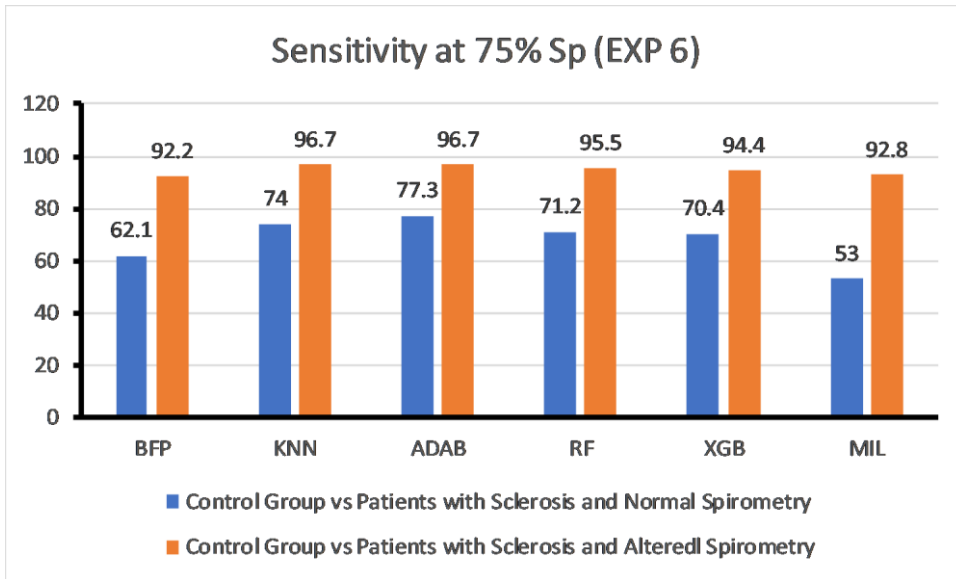


Figure S22: Sensitivity at 75% Sp for Experiment 6.