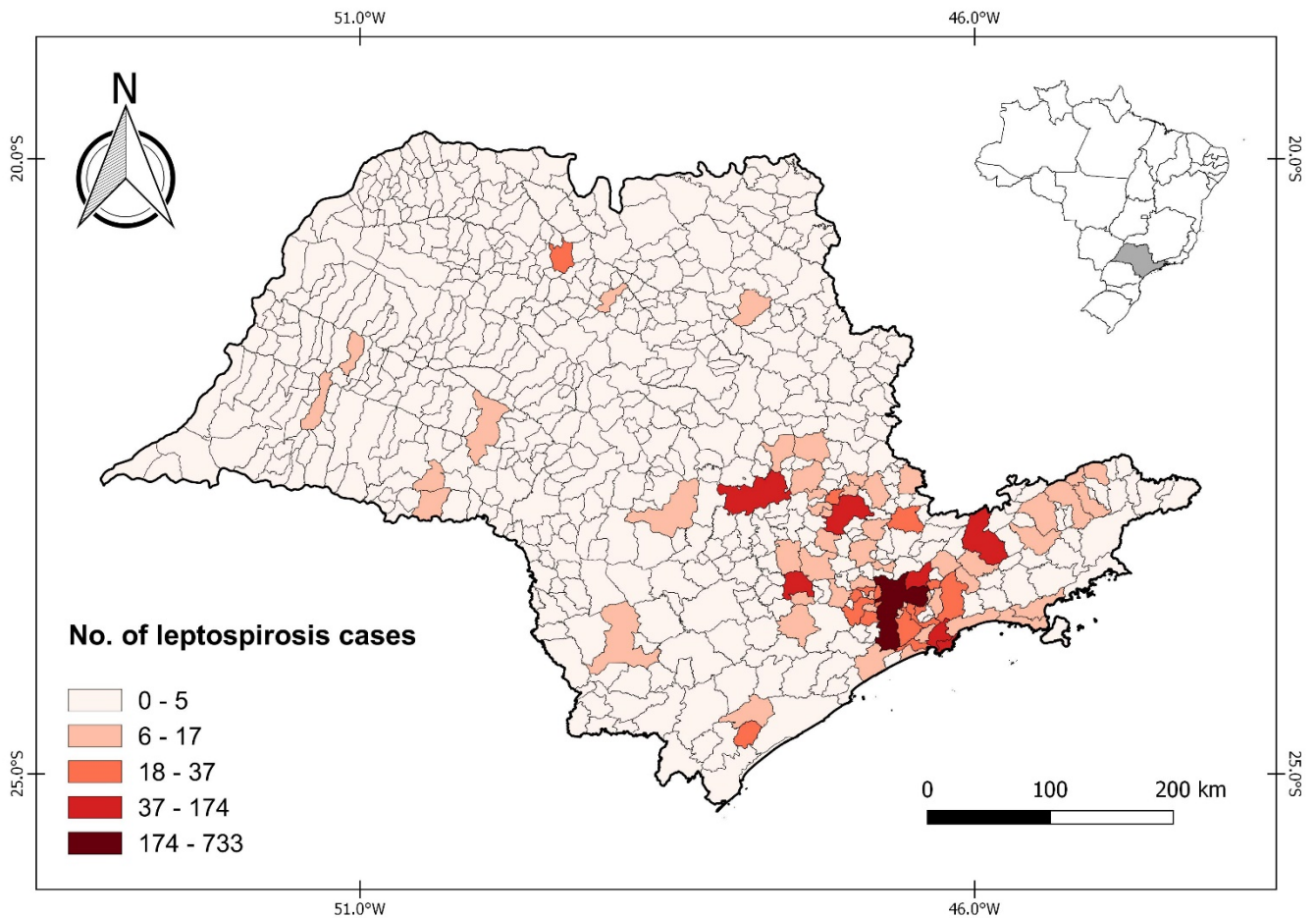


## Supplementary Material to “Leptospirosis diagnosis among patients suspected of dengue fever in Brazil”



**Additional file 2.** Number of leptospirosis cases reported to the Notifiable Diseases Information System (SINAN) between 2014 and 2017 in São Paulo state (SP), Brazil. High reporting rates were concentrated mostly in the central-east and the southeast regions of the state. The central region of SP, where the study was conducted, presented less than six cases in most cities. Data were obtained from [www.portalsinan.saude.gov](http://www.portalsinan.saude.gov) in May 2020. The map was created in the QGIS 2.18 software using graduated style with Natural Breaks algorithm.