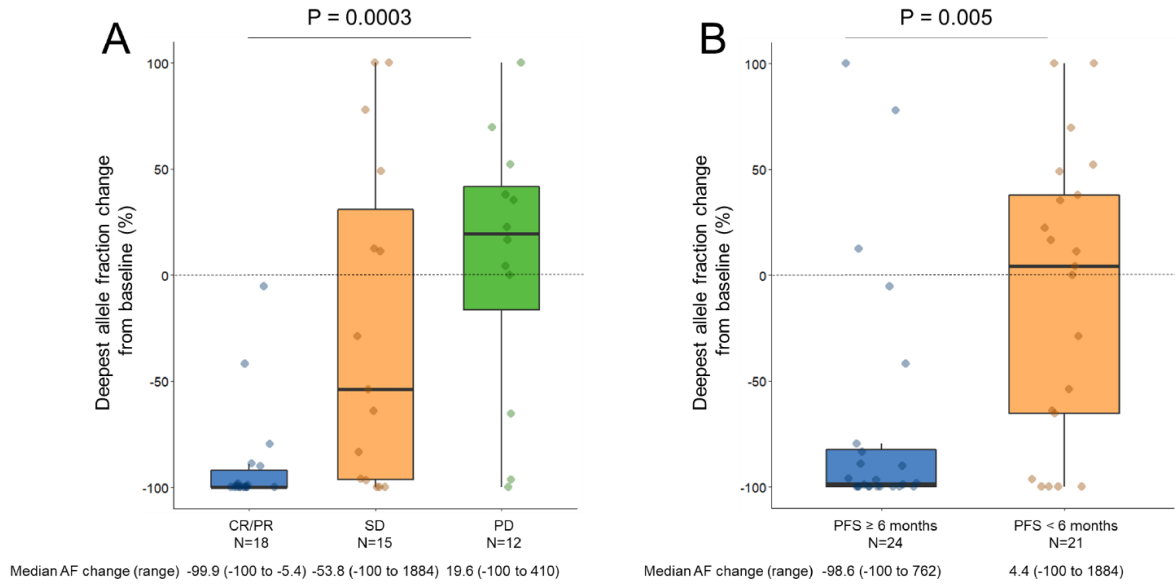


## Supplementary Figure 3



(A) Deepest plasma allele fraction change at first follow-up according to the best response to pembrolizumab +/-chemotherapy. (B) Deepest plasma allele fraction change in patients with a PFS of  $\geq 6$  months versus <6 months to pembrolizumab +/-chemotherapy. Y axis is truncated at 100%. AF, allele fraction.