

Supplementary Materials: Material Characterisation and Stratification of Conjunctival Epithelial Cells on Electrospun Poly(ϵ -Caprolactone) Fibres Loaded with Decellularised Tissue Matrices

Lucy A. Bosworth, Kyle G. Doherty, James D. Hsuan, Samuel P. Cray, Raechelle A. D'Sa, Catalina Pineda Molina, Stephen F. Badylak and Rachel L. Williams

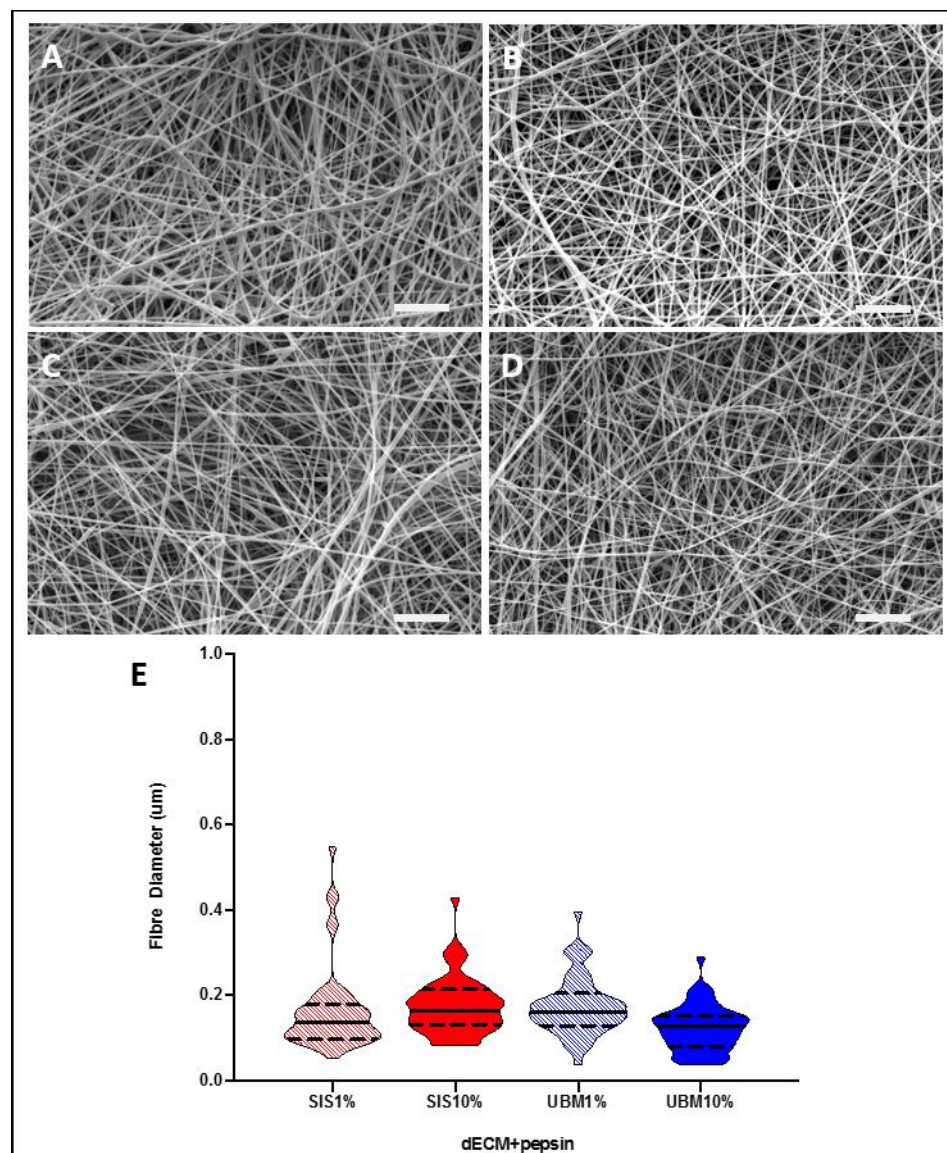


Figure S1. Scanning electron microscopy images of electrospun poly(ϵ -caprolactone) scaffolds with the addition of pepsin-solubilised decellularised tissue powder (dECM): (A) 1% small intestinal submucosa (SIS), (B) 10% SIS, (C) 1% urinary bladder matrix (UBM), and (D) 10% UBM. Magnification $\times 10,000$, scale = 5 μm . (E) Measured fibre diameter presented as a violin plot for each group ($n = 50$).