

Supplementary Material: Molecular Profiling of Docetaxel-Resistant Prostate Cancer Cells Identifies Multiple Mechanisms of Therapeutic Resistance

Tiago S. Lima, Diego Iglesias-Gato, Luciano D.O. Souza, Jan Stenvang, Diego S. Lima, Martin A. Röder, Klaus Brasso and José M.A. Moreira

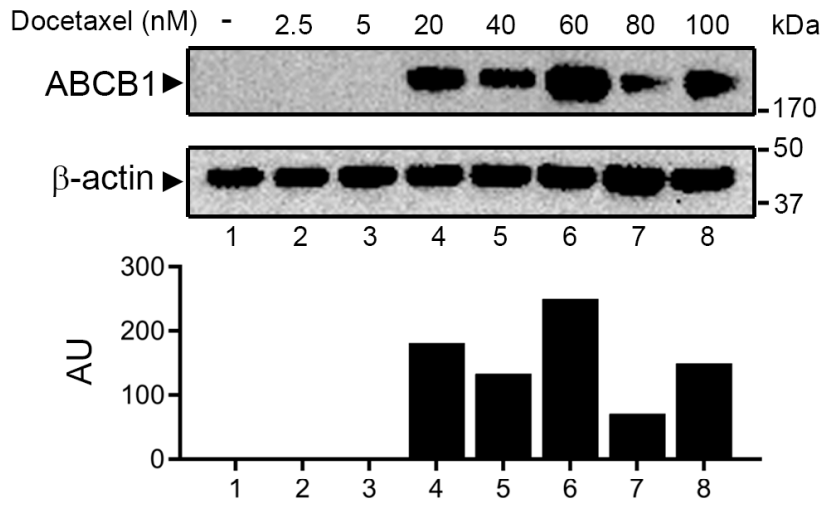


Fig 5a

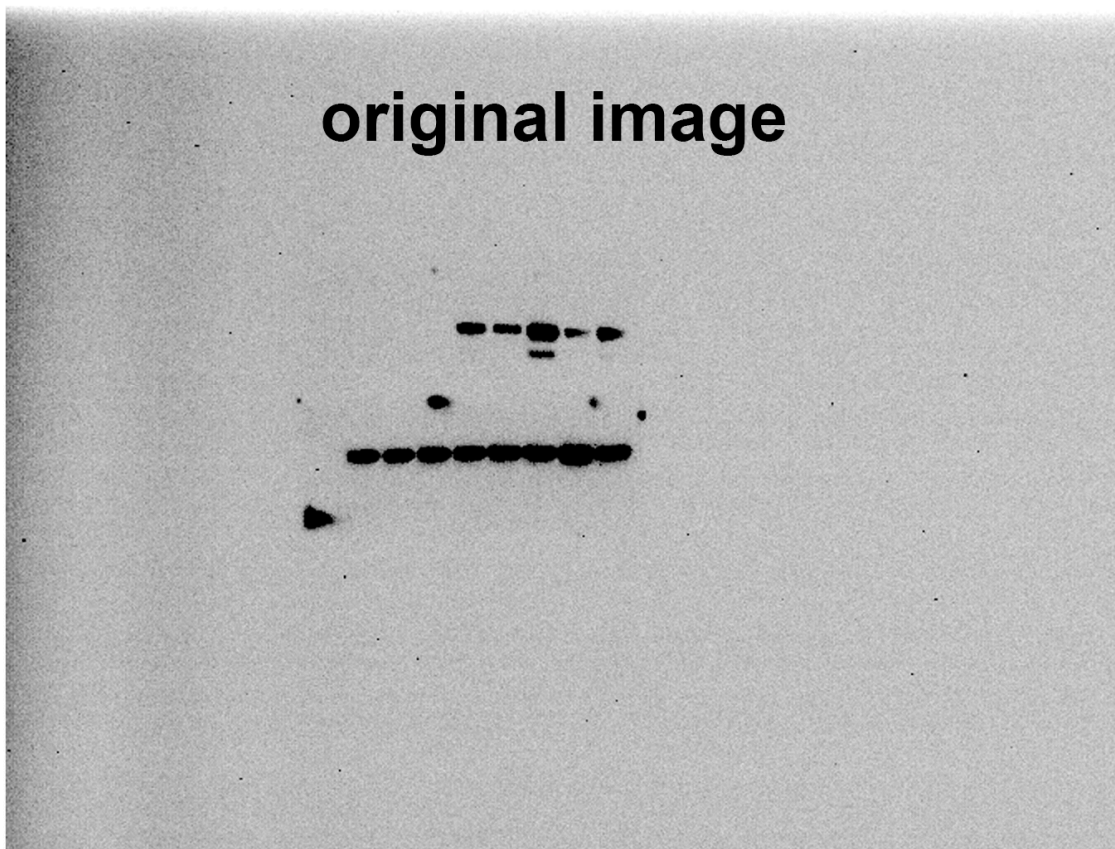


Figure S1. Uncropped Western Blot from Figure 5a.

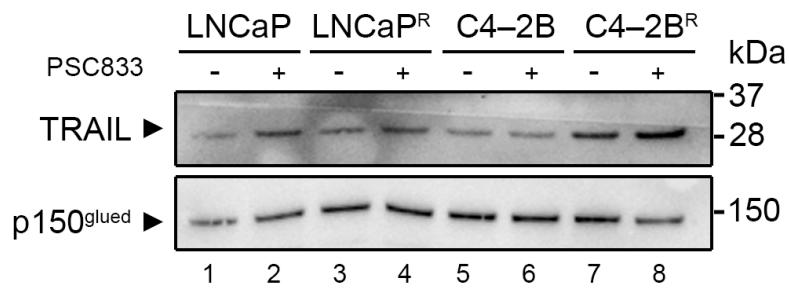
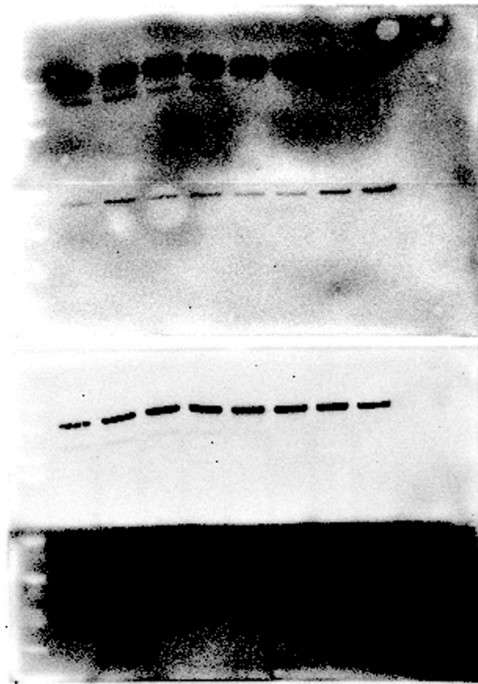
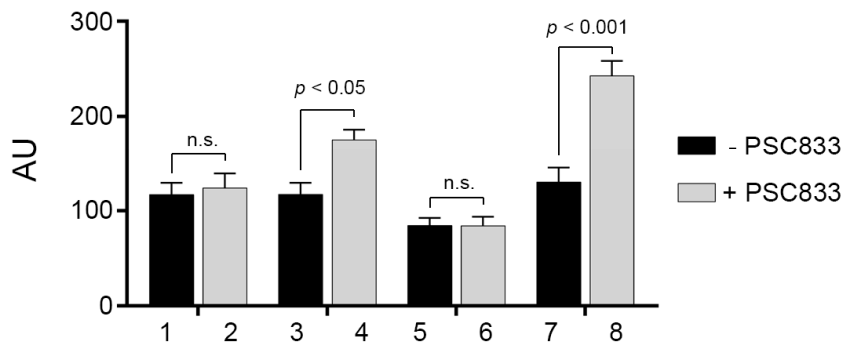
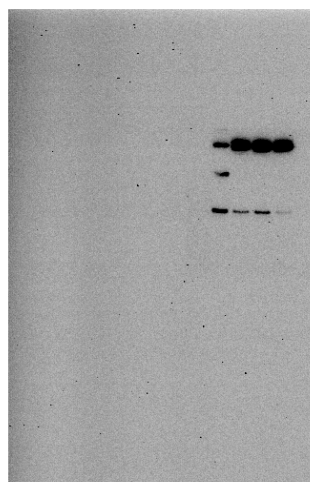
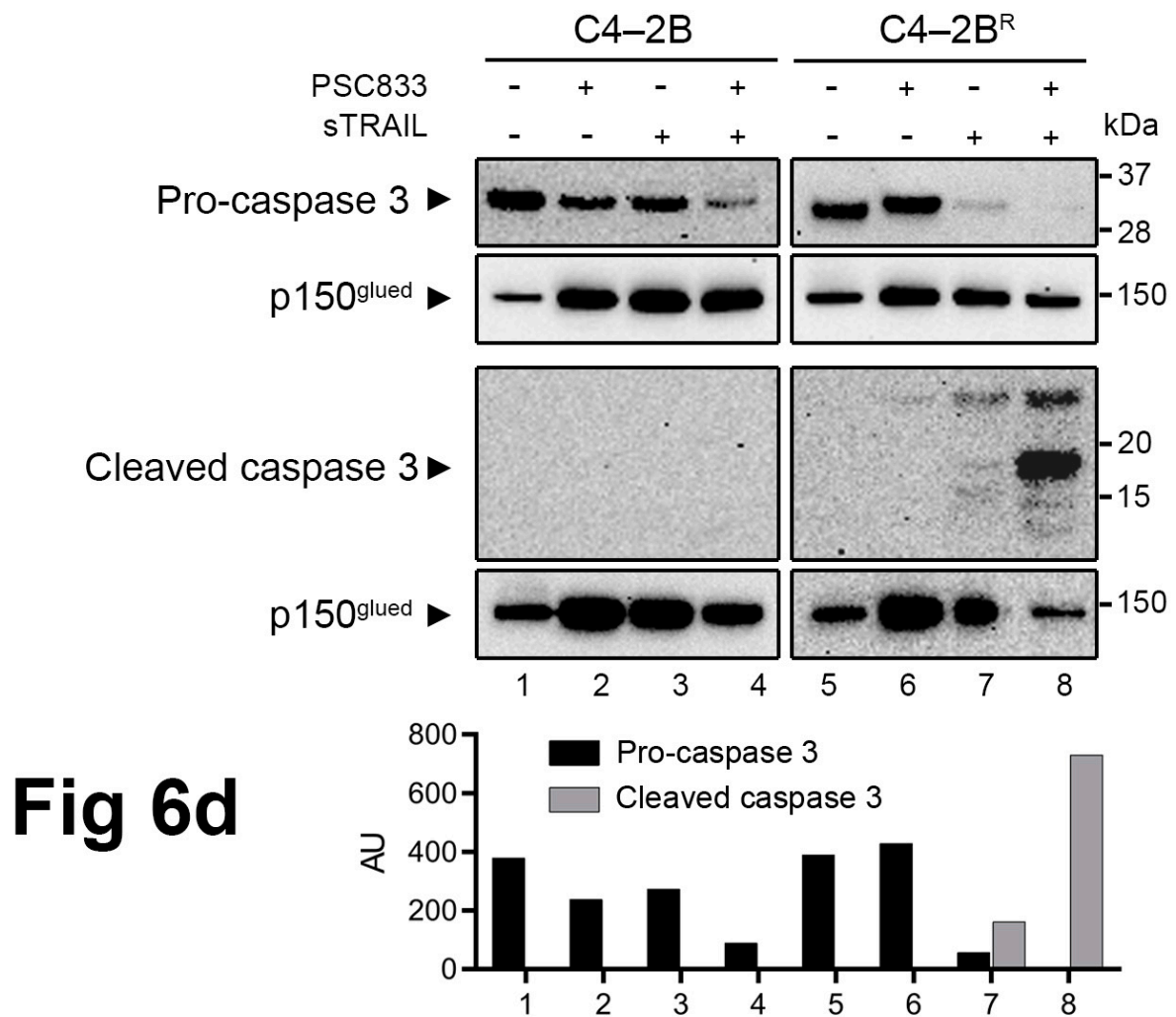


Fig 6a



original images

Figure S2. Uncropped Western Blot from Figure 6a.



original images

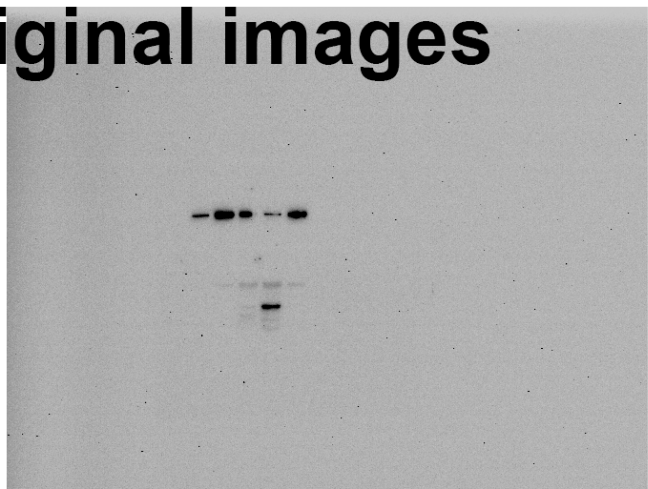


Figure S3. Uncropped Western Blot from Figure 6d.

Table 1. Significantly deregulated genes found in docetaxel resistant C4-2B^R cells compared to matched parental C4-2B cells.

| Gene Symbol | Log2 ratio | mRNA Accession | Probe Set ID |
|---------------|--------------------------|----------------------------|-------------------------|
| | C42B-R vs. C42B Parental | | |
| MTCO2P20 | 2.556207 | ENST00000437339 | TC2200007234.hg.1 |
| sloytar | 1.8353629 | sloytar.aAug10-unspliced | TC1500008258.hg.1 |
| FAM46C | 1.9558613 | NM_017709 | TC0100009572.hg.1 |
| MT1B | 3.5956287 | NM_005947 | TC1600007964.hg.1 |
| VCX2 | 1.8150125 | NM_016378 | TC0X00009022.hg.1 |
| MYLK | 2.063236 | NM_053025 | TC0300012212.hg.1 |
| TRIM25 | 1.8256367 | NM_005082 | TC1700011208.hg.1 |
| HYOU1 | 1.9994713 | ENST00000629679 | TSUnmapped00000322.hg.1 |
| PLS1 | 2.0099387 | NM_001145319 | TC0300009033.hg.1 |
| SLC25A40 | 2.2871358 | NM_018843 | TC0700011710.hg.1 |
| DSTN | 2.6777968 | NM_001011546 | TC2000006799.hg.1 |
| flubu | 3.4557462 | flubu.aAug10-unspliced | TC0100016681.hg.1 |
| WDR44 | 1.7549098 | NM_001184965 | TC0X00008223.hg.1 |
| MEF2C | 1.6524632 | NM_001131005 | TC0500011418.hg.1 |
| DUX4 | 1.8980595 | NM_001293798 | TC0400012880.hg.1 |
| KCNS3 | 1.9054757 | NM_001282428 | TC0200016408.hg.1 |
| SMARCA2 | 1.8613421 | NM_001289396 | TC0900006473.hg.1 |
| NOS3 | 1.8820606 | NM_000603 | TC0700009688.hg.1 |
| snorrawby | 2.5780115 | snorrawby.aAug10-unspliced | TC0600012435.hg.1 |
| FICD | 2.2886028 | NM_007076 | TC1200012702.hg.1 |
| C8orf4 | 1.7585952 | NM_020130 | TC0800007389.hg.1 |
| AL158839.1 | 7.5121217 | uc057hmg.1 | TC0100014568.hg.1 |
| FKBP14 | 2.336669 | NM_017946 | TC0700010621.hg.1 |
| CCNG2 | 1.9747869 | NM_004354 | TC0400012818.hg.1 |
| swola | 2.1214652 | swola.aAug10-unspliced | TC0800011605.hg.1 |
| SH3BGRL2 | 1.8042784 | NM_031469 | TC0600008622.hg.1 |
| RP11-175I6.1 | 2.4739854 | ENST00000509595 | TC0900010160.hg.1 |
| PLEKHH2 | 2.2555783 | NM_172069 | TC0200007399.hg.1 |
| VWA5B1 | 2.4121084 | NM_001039500 | TC0100007199.hg.1 |
| SQSTM1 | 2.5798378 | NM_001142298 | TC0500009706.hg.1 |
| HGD | 2.4191759 | NM_000187 | TC0300012155.hg.1 |
| HIST1H2BD | 1.982365 | NM_021063 | TC0600007274.hg.1 |
| PACSL1 | 2.1343384 | NM_001184970 | TC2200009357.hg.1 |
| KCNG1 | 2.3609717 | NM_002237 | TC2000009448.hg.1 |
| PECR | 1.8237522 | NM_018441 | TC0200016768.hg.1 |
| spostybu | 2.5164812 | spostybu.aAug10-unspliced | TC0500010494.hg.1 |
| CIR1P2 | 1.6461604 | ENST00000514821 | TC0400011658.hg.1 |
| RP1-276J11.2 | 1.873519 | ENST00000407291 | TC0600009306.hg.1 |
| SLPI | 4.85093 | NM_003064 | TC2000009216.hg.1 |
| snarsmer | 1.6336102 | snarsmer.aAug10-unspliced | TC2100008332.hg.1 |
| beyswa | 2.444127 | beyswa.aAug10-unspliced | TC1500010226.hg.1 |
| smarvey | 2.0148034 | smarvey.aAug10-unspliced | TC2000009625.hg.1 |
| RP11-467M13.3 | 2.8945584 | ENST00000563361 | TC1600009569.hg.1 |
| HIST1H2AC | 2.0392265 | NM_003512 | TC0600007270.hg.1 |
| nawsharby | 2.0934248 | nawsharby.aAug10-unspliced | TC0500008920.hg.1 |
| EPB41 | 1.8033892 | NM_001166005 | TC0100007574.hg.1 |
| BMP7 | 2.7241943 | NM_001719 | TC2000009579.hg.1 |
| stawzawby | 1.9640744 | stawzawby.aAug10-unspliced | TC0800009618.hg.1 |
| USP54 | 2.2468677 | NM_152586 | TC1000011026.hg.1 |
| CRIP1 | 1.8644994 | NM_014171 | TC0200007473.hg.1 |
| PHLDA1 | 2.250327 | NM_007350 | TC1200011310.hg.1 |

| Gene Symbol | Log2 ratio | mRNA Accession | Probe Set ID |
|--------------|--------------------------|-----------------------------|-------------------------|
| | C42B-R vs. C42B Parental | | |
| TMSB10P2 | 1.9637421 | ENST00000416049 | TC0X00006721.hg.1 |
| ESRP1 | 1.9688116 | NM_001034915 | TC0800008263.hg.1 |
| STK3 | 1.8991319 | NM_001256312 | TC0800011216.hg.1 |
| skoytyby | 1.9804734 | skoytyby.aAug10-unspliced | TC0900011615.hg.1 |
| U3 | 2.7957277 | uc060hzu.1 | TC1700011264.hg.1 |
| beyforbo | 1.8752613 | beyforbo.aAug10-unspliced | TC0300012830.hg.1 |
| OR7E108P | 2.0346537 | OTTHUMT00000469013 | TC0900010741.hg.1 |
| STXBP1 | 1.6425661 | NM_001032221 | TC0900008811.hg.1 |
| NEK11 | 2.1769638 | NM_001146003 | TC0300008826.hg.1 |
| RAB27B | 2.273912 | NM_004163 | TC1800007360.hg.1 |
| MGST1 | 2.129763 | NM_001260511 | TC1200012597.hg.1 |
| FAM3B | 2.6562383 | NM_058186 | TC2100007204.hg.1 |
| FBXW7 | 1.7710307 | NM_001013415 | TC0400012143.hg.1 |
| C10orf113 | 2.31503 | NM_001010896 | TC1000009985.hg.1 |
| ANKRD30A | 1.9212155 | NM_052997 | TC1000007305.hg.1 |
| TCEA1 | 2.4389772 | NM_006756 | TC0800010458.hg.1 |
| RPL10L | 1.6362087 | NM_080746 | TC1400009074.hg.1 |
| SNX24 | 2.4728703 | NM_014035 | TC0500008483.hg.1 |
| LDOC1 | 3.1814852 | NM_012317 | TC0X00010989.hg.1 |
| MT1L | 2.7971764 | NR_001447 | TC1600007958.hg.1 |
| RNF144B | 2.8865757 | NM_182757 | TC0600007108.hg.1 |
| APOL2 | 2.8770442 | NM_030882 | TC2200008592.hg.1 |
| FAM102A | 2.5191514 | NM_001035254 | TC0900011613.hg.1 |
| HYOU1 | 2.0172553 | ENST00000630070 | TSUnmapped00000383.hg.1 |
| NUDT4P1 | 2.0543 | NR_002212 | TC0100009760.hg.1 |
| NUDT4 | 2.0543 | BC012069 | TC0100009833.hg.1 |
| MT2P1 | 2.004661 | ENST00000262499 | TC0400007731.hg.1 |
| SLC39A8 | 2.430937 | NM_001135146 | TC0400012949.hg.1 |
| ABCA4 | 1.7557682 | NM_000350 | TC0100014977.hg.1 |
| AFF1 | 2.1071823 | NM_001166693 | TC0400008053.hg.1 |
| nihayu | 2.299007 | nihayu.aAug10-unspliced | TC0500013134.hg.1 |
| LYPLAL1 | 1.997061 | NM_001300769 | TC0100018344.hg.1 |
| styloyby | 2.2864542 | styloyby.aAug10-unspliced | TC1100012806.hg.1 |
| MT1H | 2.0951805 | NM_005951 | TC1600007966.hg.1 |
| charskarbu | 1.7623106 | charskarbu.aAug10-unspliced | TC0800007359.hg.1 |
| TFRC | 3.0779295 | NM_001128148 | TC0300013684.hg.1 |
| PBX1 | 2.1003077 | NM_001204961 | TC0100010416.hg.1 |
| C11orf74 | 1.869461 | NM_001276722 | TC1100007307.hg.1 |
| skoweyby | 1.9326919 | skoweyby.aAug10-unspliced | TC0800007025.hg.1 |
| berpu | 3.4157875 | berpu.aAug10-unspliced | TC1600009568.hg.1 |
| GAGE2D | 1.9100043 | NM_001098407 | TC0X00007230.hg.1 |
| AKR1C1 | 3.9698596 | NM_001353 | TC1000012427.hg.1 |
| SDC4 | 2.9199095 | NM_002999 | TC2000009218.hg.1 |
| CEBPG | 2.0440154 | NM_001252296 | TC1900007777.hg.1 |
| ANXA9 | 2.6036305 | NM_003568 | TC0100009934.hg.1 |
| SLC7A2 | 2.4294286 | NM_001008539 | TC0800006869.hg.1 |
| DPY19L2 | 2.7795074 | NM_173812 | TC1200011067.hg.1 |
| LNX1 | 1.848864 | NM_001126328 | TC0400010704.hg.1 |
| RP11-310H4.6 | 1.7799234 | ENST00000432235 | TC0700011150.hg.1 |
| pumeybo | 2.9632332 | pumeybo.aAug10-unspliced | TC0200016307.hg.1 |
| barter | 3.1832414 | barter.aAug10-unspliced | TC1900008897.hg.1 |
| KIAA1217 | 2.0498295 | NM_001098500 | TC1000007024.hg.1 |
| SCPEP1 | 2.0521278 | NM_021626 | TC1700008372.hg.1 |
| norome | 2.8114371 | norome.aAug10-unspliced | TC0600007272.hg.1 |

| Gene Symbol | Log2 ratio | mRNA Accession | Probe Set ID |
|--------------|--------------------------|----------------------------|-------------------|
| | C42B-R vs. C42B Parental | | |
| GOLPH3L | 1.9845945 | NM_018178 | TC0100015747.hg.1 |
| GAGE12C | 1.6847732 | NM_001098408 | TC0X00007236.hg.1 |
| FIRRE | 2.36869 | NR_026975 | TC0X00010826.hg.1 |
| STOX2 | 2.7031202 | NM_020225 | TC0400012868.hg.1 |
| TGFB2 | 1.9736983 | NM_001135599 | TC0100011621.hg.1 |
| GFPT1 | 2.057595 | NM_001244710 | TC0200012956.hg.1 |
| CCSER2 | 2.063996 | NM_001284240 | TC1000008276.hg.1 |
| PITPNC1 | 2.7577353 | NM_012417 | TC1700008690.hg.1 |
| TPM4 | 1.8586121 | NM_001145160 | TC1900007260.hg.1 |
| FAM49A | 2.2904944 | NM_030797 | TC0200011837.hg.1 |
| UGT2B17 | 3.4642975 | NM_001077 | TC0400012923.hg.1 |
| IFIH1 | 2.2537599 | NM_022168 | TC0200014772.hg.1 |
| PRSS3P1 | 2.3051689 | OTTHUMT00000352529 | TC0700013482.hg.1 |
| MIR5087 | 3.0674887 | NR_049810 | TC0100015651.hg.1 |
| spokabu | 2.7656844 | spokabu.aAug10-unspliced | TC0100016834.hg.1 |
| OCLN | 1.9891542 | NM_001205254 | TC0500007681.hg.1 |
| FTH1P20 | 2.416377 | ENST00000434913 | TC0200015115.hg.1 |
| LYNX1 | 3.1316922 | NM_023946 | TC0800012087.hg.1 |
| GIMAP2 | 2.6012378 | NM_015660 | TC0700009678.hg.1 |
| OGT | 2.440051 | NM_181672 | TC0X00007573.hg.1 |
| BZW1 | 2.2101567 | NM_001207067 | TC0200016591.hg.1 |
| SPATA6 | 2.8650463 | NM_001286238 | TC0100014127.hg.1 |
| ADGRD1 | 1.9458314 | NM_198827 | TC1200009420.hg.1 |
| NSFL1C | 1.9769204 | NM_001206736 | TC2000009967.hg.1 |
| HTRA1 | 3.3722675 | NM_002775 | TC1000009152.hg.1 |
| RYR2 | 2.540142 | NM_001035 | TC0100012113.hg.1 |
| PDZRN4 | 2.0251794 | NM_001164595 | TC1200007365.hg.1 |
| TMPRSS13 | 2.5395088 | NM_001077263 | TC1100012460.hg.1 |
| TGIF1 | 2.3427405 | NM_001278682 | TC1800006513.hg.1 |
| CAPN13 | 2.8812177 | NM_144575 | TC0200012159.hg.1 |
| DDIT3 | 2.8651576 | NM_001195053 | TC1200010968.hg.1 |
| flageyby | 2.9376454 | flageyby.aAug10-unspliced | TC0800006607.hg.1 |
| ARHGAP18 | 2.7072875 | NM_033515 | TC0600013147.hg.1 |
| RP11-42110.3 | 2.433308 | ENST00000569247 | TC1600010232.hg.1 |
| AHNAK | 2.3978548 | NM_001620 | TC1100011083.hg.1 |
| SLC31A1 | 2.3184505 | NM_001859 | TC0900008483.hg.1 |
| INSIG1 | 2.1990108 | NM_005542 | TC0700009807.hg.1 |
| ZMAT1 | 2.786966 | NM_001011657 | TC0X00010375.hg.1 |
| RASSF5 | 2.057347 | NM_182663 | TC0100011378.hg.1 |
| CDKL5 | 2.6031282 | NM_001037343 | TC0X00006723.hg.1 |
| SLC6A9 | 2.9733095 | NM_001024845 | TC0100013949.hg.1 |
| NFE2L1 | 1.8720367 | NM_003204 | TC1700008151.hg.1 |
| APOBEC3F | 2.2555275 | NM_001006666 | TC2200009273.hg.1 |
| FTH1P1 | 2.5797894 | ENST00000437933 | TC0100007836.hg.1 |
| SLC27A2 | 2.3830538 | NM_001159629 | TC1500007196.hg.1 |
| sporrer | 2.0543048 | sporrer.aAug10-unspliced | TC1700010884.hg.1 |
| DNAJB4 | 1.7952117 | NM_007034 | TC0100018238.hg.1 |
| MOCOS | 2.0550597 | NM_017947 | TC1800007092.hg.1 |
| SMAD1 | 1.9369818 | NM_001003688 | TC0400008909.hg.1 |
| blufleyby | 2.6883414 | blufleyby.aAug10-unspliced | TC0600010924.hg.1 |
| G6PD | 2.6381767 | NM_000402 | TC0X00011211.hg.1 |
| COX7B2 | 2.2448897 | NM_130902 | TC0400010601.hg.1 |
| RNF24 | 2.4011421 | NM_001134337 | TC2000008242.hg.1 |
| NOSTRIN | 2.720015 | NM_001171631 | TC0200009902.hg.1 |

| Gene Symbol | Log2 ratio | mRNA Accession | Probe Set ID |
|----------------|--------------------------|-------------------------|-------------------------|
| | C42B-R vs. C42B Parental | | |
| DUSP16 | 2.177465 | ENST00000629698 | TSUnmapped00000353.hg.1 |
| ARL6IP5 | 2.2438483 | NM_006407 | TC0300007745.hg.1 |
| SERINC2 | 3.0051534 | NM_001199037 | TC0100007638.hg.1 |
| GAS6-AS1 | 2.4923854 | NR_044995 | TC1300010008.hg.1 |
| KGFLP2 | 2.3089495 | NR_003670 | TC0900010077.hg.1 |
| SCD | 3.149445 | NM_005063 | TC1000008643.hg.1 |
| CPEB4 | 2.6830664 | NM_001308189 | TC0500009521.hg.1 |
| ZNF716 | 2.8257208 | NM_001159279 | TC0700007692.hg.1 |
| ATXN1 | 3.0712938 | NM_000332 | TC0600010921.hg.1 |
| GBP2 | 3.174421 | NM_004120 | TC0100018451.hg.1 |
| MCUR1 | 2.685324 | NM_001031713 | TC0600010867.hg.1 |
| FTH1P3 | 3.7188716 | NR_002201 | TC0200012078.hg.1 |
| BCAT1 | 2.335521 | NM_001178091 | TC1200010145.hg.1 |
| TGFBR3 | 3.277282 | NM_001195683 | TC0100014910.hg.1 |
| ANKDD1A | 2.2231696 | NM_182703 | TC1500010755.hg.1 |
| SC5D | 3.3064392 | NM_001024956 | TC1100009306.hg.1 |
| HSPB1 | 2.580128 | NM_001540 | TC0700008090.hg.1 |
| SLC41A2 | 2.5899184 | NM_032148 | TC1200011767.hg.1 |
| TPD52L1 | 2.589391 | NM_001003395 | TC0600009353.hg.1 |
| MPZL2 | 2.4309084 | NM_005797 | TC1100012474.hg.1 |
| EBAG9 | 1.9143658 | NM_001278938 | TC0800008550.hg.1 |
| PARP14 | 3.007323 | NM_017554 | TC0300008561.hg.1 |
| PHLDA2 | 3.3740947 | NM_003311 | TC1100009817.hg.1 |
| GAGE2B | 2.1062987 | NM_001098411 | TC0X00011289.hg.1 |
| TUFT1 | 1.8593719 | NM_001126337 | TC0100009959.hg.1 |
| SESN2 | 3.0843472 | NM_031459 | TC0100007552.hg.1 |
| SPTLC3 | 4.023873 | NM_018327 | TC2000006736.hg.1 |
| CAST | 2.2886567 | NM_001042440 | TC0500013204.hg.1 |
| SRD5A3 | 3.0292084 | NM_024592 | TC0400007556.hg.1 |
| MTND2P19 | 1.9594035 | ENST00000449129 | TC0200014466.hg.1 |
| RP11-262H14.11 | 1.9232662 | ENST00000402994 | TC0900007367.hg.1 |
| RANBP9 | 2.251033 | NM_005493 | TC0600010864.hg.1 |
| RNVU1-14 | 2.1135805 | NR_104075 | TC0100009731.hg.1 |
| CAPN2 | 2.5348122 | NM_001146068 | TC0100011721.hg.1 |
| UGT2B15 | 4.087487 | NM_001076 | TC0400012924.hg.1 |
| SP140L | 3.761476 | NM_001308162 | TC0200011022.hg.1 |
| ANK2 | 3.0075157 | NM_001127493 | TC0400008450.hg.1 |
| NUDT4 | 2.2091818 | NM_001301022 | TC1200008466.hg.1 |
| PRSS3 | 2.397254 | NM_001197097 | TC0900007006.hg.1 |
| sakaya | 5.2009363 | sakaya.aAug10-unspliced | TC0600010934.hg.1 |
| CA12 | 3.5536072 | NM_001218 | TC1500009709.hg.1 |
| MAP4 | 2.3073993 | NM_001134364 | TC0300010999.hg.1 |
| RTN3 | 3.4215872 | NM_001265589 | TC1100007906.hg.1 |
| CDH1 | 2.870005 | NM_004360 | TC1600008209.hg.1 |
| RPL10P5 | 2.1095893 | ENST00000427719 | TC0200013812.hg.1 |
| FTH1P5 | 2.7968874 | ENST00000425761 | TC0600012024.hg.1 |
| SHTN1 | 2.751711 | NM_001127211 | TC1000011938.hg.1 |
| FYN | 1.9693853 | NM_002037 | TC0600012875.hg.1 |
| GBA3 | 2.4332054 | NM_001128432 | TC0400007054.hg.1 |
| DIAPH2 | 2.2851849 | NM_006729 | TC0X00007889.hg.1 |
| SEC24D | 1.9789906 | NM_014822 | TC0400011695.hg.1 |
| CSTA | 2.761778 | NM_005213 | TC0300008550.hg.1 |
| TMEM2 | 3.2893984 | NM_001135820 | TC0900010386.hg.1 |
| ZNRF2 | 2.6592278 | NM_147128 | TC0700013343.hg.1 |

| Gene Symbol | Log2 ratio | mRNA Accession | Probe Set ID |
|---------------|--------------------------|----------------------------|-------------------|
| | C42B-R vs. C42B Parental | | |
| HMGCS1 | 2.1856532 | NM_001098272 | TC0500010635.hg.1 |
| MYL6 | 1.9070586 | NM_021019 | TC1200012648.hg.1 |
| SEMA3C | 3.134626 | NM_006379 | TC0700011626.hg.1 |
| ELOVL6 | 7.713397 | NM_001130721 | TC0400012956.hg.1 |
| STAT1 | 2.125659 | NM_007315 | TC0200015242.hg.1 |
| smeyneeby | 3.4638515 | smeyneeby.aAug10-unspliced | TC1000006960.hg.1 |
| FGF7P2 | 2.568896 | OTTHUMT00000157659 | TC2100006546.hg.1 |
| EPHX1 | 2.696237 | NM_000120 | TC0100011770.hg.1 |
| GRIN3A | 2.0824683 | NM_133445 | TC0900011038.hg.1 |
| garjer | 6.5080347 | garjer.aAug10-unspliced | TC1900010559.hg.1 |
| foyjer | 6.5080347 | foyjer.aAug10-unspliced | TC1900010557.hg.1 |
| CASP10 | 3.0343173 | NM_001206524 | TC0200010445.hg.1 |
| FKBP1A-SDCBP2 | 4.099933 | NR_037661 | TC2000009966.hg.1 |
| FIBIN | 3.2078543 | NM_203371 | TC1100007110.hg.1 |
| AMD1 | 2.3803315 | NM_001287214 | TC0600009127.hg.1 |
| CD58 | 3.0199096 | NM_001144822 | TC0100015397.hg.1 |
| tuhiyo | 2.0951114 | tuhiyo.aAug10-unspliced | TC0200010130.hg.1 |
| LAMA3 | 2.606424 | NM_000227 | TC1800006897.hg.1 |
| MT1X | 2.7078235 | NM_005952 | TC1600011399.hg.1 |
| RP11-164A6.1 | 3.8277433 | ENST00000566263 | TC1600007067.hg.1 |
| ADAM22 | 3.3546476 | NM_004194 | TC0700008265.hg.1 |
| CTAGE5 | 2.3504632 | NM_001247988 | TC1400010605.hg.1 |
| HSPB8 | 5.3794823 | NM_014365 | TC1200012714.hg.1 |
| SEPHS2 | 1.8761007 | NM_012248 | TC1600009967.hg.1 |
| CDRT1 | 2.8424735 | NM_001282540 | TC1700012361.hg.1 |
| AGMO | 5.1053877 | NM_001004320 | TC0700010334.hg.1 |
| SERPINA3 | 3.7901878 | NM_001085 | TC1400010644.hg.1 |
| GPR1 | 4.6435003 | NM_001098199 | TC0200015514.hg.1 |
| ESYT1 | 3.766751 | NM_001184796 | TC1200012646.hg.1 |
| TRIM16L | 2.9274688 | NM_001037330 | TC1700007135.hg.1 |
| MAP1LC3B | 3.7100227 | NM_022818 | TC1600011442.hg.1 |
| TBL1X | 2.7703466 | NM_001139466 | TC0X00006581.hg.1 |
| CDKN1A | 3.2562292 | NM_000389 | TC0600007847.hg.1 |
| TLR3 | 2.6054356 | NM_003265 | TC0400009543.hg.1 |
| MVB12A | 2.9125915 | NM_001304547 | TC1900007325.hg.1 |
| FBXL2 | 2.5896528 | NM_001171713 | TC0300006994.hg.1 |
| ABCB4 | 2.3626509 | NM_000443 | TC0700011705.hg.1 |
| TP53INP1 | 2.546145 | NM_001135733 | TC0800011150.hg.1 |
| VOPP1 | 2.7426176 | NM_001284282 | TC0700011139.hg.1 |
| SH3BGRL | 3.8019726 | NM_003022 | TC0X00007744.hg.1 |
| HSPB1P1 | 3.0172966 | ENST00000423240 | TC0900010395.hg.1 |
| CCPG1 | 2.8027964 | NM_001204450 | TC1500010869.hg.1 |
| RCN1 | 2.0356863 | NM_002901 | TC1100012981.hg.1 |
| MT2A | 3.3000278 | NM_005953 | TC1600007957.hg.1 |
| sugorby | 2.5419974 | sugorby.aAug10-unspliced | TC0800006629.hg.1 |
| TES | 2.4288614 | NM_015641 | TC0700008868.hg.1 |
| CRNDE | 2.7284465 | NM_001308963 | TC1600010375.hg.1 |
| SLC18B1 | 2.812597 | NM_052831 | TC0600013206.hg.1 |
| SYTL2 | 3.361905 | NM_001162951 | TC1100011833.hg.1 |
| ERAP1 | 2.9046552 | NM_001040458 | TC0500013342.hg.1 |
| ITGAV | 1.9961687 | NM_001144999 | TC0200010216.hg.1 |
| DEPTOR | 3.7637937 | NM_001283012 | TC0800008674.hg.1 |
| XAGE1B | 2.9679797 | NM_001097594 | TC0X00007285.hg.1 |
| BTN3A3 | 2.6942353 | NM_001242803 | TC0600007306.hg.1 |

| Gene Symbol | Log2 ratio | mRNA Accession | Probe Set ID |
|----------------|--------------------------|-------------------------|-------------------------|
| | C42B-R vs. C42B Parental | | |
| NQO1 | 3.478722 | NM_000903 | TC1600010732.hg.1 |
| EFHC2 | 3.9557226 | NM_025184 | TC0X00009493.hg.1 |
| EGF | 2.5789373 | NM_001178130 | TC0400008391.hg.1 |
| S100A11 | 3.4654043 | NM_005620 | TC0100015822.hg.1 |
| SVIL | 2.0556378 | NM_003174 | TC1000010172.hg.1 |
| IYD | 3.2605581 | NM_001164694 | TC0600009836.hg.1 |
| SORL1 | 3.5583835 | NM_003105 | TC1100009309.hg.1 |
| ITGA6 | 3.3327804 | NM_000210 | TC0200009973.hg.1 |
| GOLIM4 | 2.9543908 | NM_001308155 | TC0300013058.hg.1 |
| COL5A1 | 2.6093705 | NM_000093 | TC0900009127.hg.1 |
| NLRP11 | 5.0331736 | NM_001297743 | TC1900011495.hg.1 |
| NMRK1 | 3.1615076 | NM_001127603 | TC0900010445.hg.1 |
| CD47 | 3.0799217 | NM_001777 | TC0300011936.hg.1 |
| CYP2R1 | 2.9326434 | NM_024514 | TC1100010185.hg.1 |
| FAM3C | 2.5577636 | NM_001040020 | TC0700012427.hg.1 |
| SEL1L3 | 3.334759 | NM_001297592 | TC0400010282.hg.1 |
| NBR2 | 2.5912611 | NR_003108 | TC1700007939.hg.1 |
| BTN3A2 | 5.676165 | NM_001197246 | TC0600007301.hg.1 |
| SCARB2 | 2.6410038 | NM_001204255 | TC0400011057.hg.1 |
| MATN2 | 2.6245186 | NM_002380 | TC0800008324.hg.1 |
| C11orf1 | 2.9532487 | NM_022761 | TC1100009040.hg.1 |
| SLFN5 | 5.592034 | NM_144975 | TC1700007585.hg.1 |
| SLC9A1 | 2.7157364 | NM_003047 | TC0100013417.hg.1 |
| IDH1 | 2.9535055 | NM_001282386 | TC0200015578.hg.1 |
| TACC1 | 3.6506128 | NM_001122824 | TC0800007351.hg.1 |
| LINC01260 | 5.8145905 | NR_034104 | TC2000009199.hg.1 |
| REXO2 | 4.1899905 | NM_015523 | TC1100013097.hg.1 |
| TXNRD1 | 2.734969 | NM_001093771 | TC1200008675.hg.1 |
| STX3 | 3.2840781 | NM_001178040 | TC1100013012.hg.1 |
| TRPV6 | 4.233062 | NM_018646 | TC0700012867.hg.1 |
| CLCN3P1 | 2.7573285 | ENST00000423965 | TC0900012207.hg.1 |
| IFT46 | 3.3162656 | NM_001168618 | TC1100012488.hg.1 |
| skumu | 6.3857255 | skumu.aAug10-unspliced | TC1900007926.hg.1 |
| bawvy | 4.0946937 | bawvy.aAug10-unspliced | TC1900010558.hg.1 |
| RNF43 | 2.7926848 | NM_001305544 | TC1700012439.hg.1 |
| XAGE1E | 3.3516333 | NM_001097604 | TC0X00009718.hg.1 |
| muchee | 4.837899 | muchee.aAug10-unspliced | TC1900007965.hg.1 |
| stawmo | 4.837899 | stawmo.aAug10-unspliced | TC1900007966.hg.1 |
| LMO4 | 4.990986 | NM_006769 | TC0100008938.hg.1 |
| TRAF5 | 2.2844217 | NM_001033910 | TC0100011487.hg.1 |
| PIGA | 2.6435392 | NM_002641 | TC0X00009124.hg.1 |
| SLC5A1 | 7.196634 | NM_000343 | TC2200007120.hg.1 |
| SOHLH2 | 5.655156 | NM_001282147 | TC1300010032.hg.1 |
| ATP2B1 | 4.5906506 | NM_001001323 | TC1200011474.hg.1 |
| MSMO1 | 3.3272045 | NM_001017369 | TC0400009221.hg.1 |
| AGR2 | 7.5411777 | NM_006408 | TC0700010355.hg.1 |
| CCDC169-SOHLH2 | 4.812886 | NM_001198910 | TC1300010031.hg.1 |
| ARHGEF2 | 4.1870937 | NM_001162383 | TC0100018507.hg.1 |
| CDK19 | 2.6237354 | NM_001300960 | TC0600012839.hg.1 |
| SLC16A1 | 4.5411086 | ENST00000629508 | TSUnmapped00000372.hg.1 |
| IFRD1 | 2.8767796 | NM_001007245 | TC0700013441.hg.1 |
| IRF6 | 3.238593 | NM_001206696 | TC0100017172.hg.1 |
| NPC1 | 2.7375877 | NM_000271 | TC1800008285.hg.1 |
| ENAH | 3.6579103 | NM_001008493 | TC0100017491.hg.1 |

| Gene Symbol | Log2 ratio | mRNA Accession | Probe Set ID |
|-------------|--------------------------|----------------------------|-------------------------|
| | C42B-R vs. C42B Parental | | |
| RTN4 | 4.4425783 | NM_007008 | TC0200016672.hg.1 |
| SDC2 | 2.9694257 | NM_002998 | TC0800008299.hg.1 |
| NAALADL2 | 5.1968737 | NM_207015 | TC0300013904.hg.1 |
| CA1 | 6.0031576 | NM_001128829 | TC0800010990.hg.1 |
| SLC16A1 | 6.8362164 | ENST00000629920 | TSUnmapped00000370.hg.1 |
| ATF3 | 6.918365 | NM_001030287 | TC0100011533.hg.1 |
| GCNT3 | 7.1341777 | NM_004751 | TC1500007409.hg.1 |
| SLC16A1 | 4.7119775 | ENST00000628110 | TSUnmapped00000474.hg.1 |
| TNFSF15 | 8.423518 | NM_001204344 | TC0900011300.hg.1 |
| IL1RN | 3.9677577 | NM_000577 | TC0200016511.hg.1 |
| SERPIN1 | 6.7106404 | NM_001122752 | TC0300009412.hg.1 |
| PRKAR2B | 2.997872 | NM_002736 | TC0700008745.hg.1 |
| FDFT1 | 3.5051198 | NM_001287742 | TC0800006760.hg.1 |
| SAGE1 | 3.769296 | NM_018666 | TC0X00008518.hg.1 |
| CCR2 | 4.198822 | NM_001123041 | TC0300007256.hg.1 |
| JUN | 6.7944 | NM_002228 | TC0100014349.hg.1 |
| TMEM154 | 5.604867 | NM_152680 | TC0400012150.hg.1 |
| MFSD6 | 5.952086 | NM_017694 | TC0200010264.hg.1 |
| MANBA | 5.6267633 | NM_005908 | TC0400011464.hg.1 |
| C1orf158 | 13.972065 | NM_152290 | TC0100006905.hg.1 |
| XG | 8.097232 | NM_001141919 | TC0X00006480.hg.1 |
| PAX9 | 3.197338 | NM_006194 | TC1400006933.hg.1 |
| KIAA1841 | 5.085828 | NM_001129993 | TC0200016454.hg.1 |
| FTH1P7 | 3.222549 | ENST00000450676 | TC1300008309.hg.1 |
| glormu | 12.776982 | glormu.aAug10-unspliced | TC1900007923.hg.1 |
| blymu | 12.776982 | blymu.aAug10-unspliced | TC1900007920.hg.1 |
| blermu | 12.776982 | blermu.aAug10-unspliced | TC1900007919.hg.1 |
| pleemu | 12.776982 | pleemu.aAug10-unspliced | TC1900007929.hg.1 |
| glumu | 12.776982 | glumu.aAug10-unspliced | TC1900007924.hg.1 |
| plumu | 12.776982 | plumu.aAug10-unspliced | TC1900007930.hg.1 |
| FKBP1A | 3.864848 | NM_000801 | TC2000009965.hg.1 |
| FTH1P8 | 4.889244 | ENST00000498161 | TC0X00008672.hg.1 |
| ISCU | 3.1932976 | NM_001301140 | TC1200008771.hg.1 |
| GPNMB | 4.448002 | NM_001005340 | TC0700006913.hg.1 |
| IFI16 | 6.2759724 | NM_001206567 | TC0100010244.hg.1 |
| rekimu | 11.182986 | rekimu.aAug10-unspliced | TC0700011707.hg.1 |
| swoyneeby | 5.683965 | swoyneeby.aAug10-unspliced | TC1000009987.hg.1 |
| PRSS1 | 8.865776 | ENST00000311737 | TC0700013481.hg.1 |
| LPIN1 | 3.8061435 | NM_001261427 | TC0200016403.hg.1 |
| TMEM123 | 4.1524496 | NM_052932 | TC1100012121.hg.1 |
| CT45A9 | 12.90071 | NM_001291540 | TC0X00010918.hg.1 |
| CT45A8 | 12.90071 | NM_001291535 | TC0X00010917.hg.1 |
| QKI | 4.03818 | NM_001301085 | TC0600010121.hg.1 |
| FAM129A | 5.8426924 | NM_052966 | TC0100016678.hg.1 |
| machee | 12.880194 | machee.aAug10-unspliced | TC1900010561.hg.1 |
| choserbu | 15.196476 | choserbu.aAug10-unspliced | TC1900007921.hg.1 |
| klarmu | 15.196476 | klarmu.aAug10-unspliced | TC1900007925.hg.1 |
| slumu | 15.196476 | slumu.aAug10-unspliced | TC1900007931.hg.1 |
| narva | 15.196476 | narva.aAug10-unspliced | TC1900007927.hg.1 |
| CT45A1 | 6.4254484 | NM_001017417 | TC0X00008516.hg.1 |
| BCAP29 | 4.129672 | NM_001008405 | TC0700013439.hg.1 |
| GCLM | 5.316095 | NM_001308253 | TC0100014966.hg.1 |
| kawjer | 17.038025 | kawjer.aAug10-unspliced | TC1900010563.hg.1 |
| rawsarbo | 17.038025 | rawsarbo.aAug10-unspliced | TC1900010556.hg.1 |

| Gene Symbol | Log2 ratio | mRNA Accession | Probe Set ID |
|---------------|--------------------------|--------------------------|-------------------|
| | C42B-R vs. C42B Parental | | |
| geyjer | 17.038025 | geyjer.aAug10-unspliced | TC1900010560.hg.1 |
| kajer | 17.038025 | kajer.aAug10-unspliced | TC1900010562.hg.1 |
| CLCN3 | 4.78516 | NM_001243372 | TC0400009284.hg.1 |
| UNC13C | 6.261909 | NM_001080534 | TC1500007294.hg.1 |
| P4HA2 | 4.6525226 | NM_001017973 | TC0500013354.hg.1 |
| CT45A10 | 13,91298 | NM_001291527 | TC0X00010919.hg.1 |
| ERICH2 | 6.9932623 | NM_001289947 | TC0200009933.hg.1 |
| LAMP3 | 21.869093 | NM_014398 | TC0300013336.hg.1 |
| CT45A2 | 11.4338665 | NM_152582 | TC0X00010915.hg.1 |
| CASP8 | 5.102216 | NM_001080124 | TC0200010447.hg.1 |
| CT45A6 | 7.2247996 | NM_001017438 | TC0X00010916.hg.1 |
| neeva | 20.764526 | neeva.aAug10-unspliced | TC1900007928.hg.1 |
| HEXB | 4.197721 | NM_000521 | TC0500007792.hg.1 |
| CLDN12 | 4.0508637 | NM_001185072 | TC0700013396.hg.1 |
| glermu | 18,37179 | glermu.aAug10-unspliced | TC1900007922.hg.1 |
| CDR1 | 21.426937 | NM_004065 | TC0X00010982.hg.1 |
| TSPAN7 | 5.3132873 | NM_004615 | TC0X00011279.hg.1 |
| CASP4 | 10.432205 | NM_001225 | TC1100012165.hg.1 |
| CT45A5 | 8.474921 | NM_001007551 | TC0X00010912.hg.1 |
| PLA2G2A | 17.562618 | NM_000300 | TC0100013162.hg.1 |
| BHLHE41 | 6.6517124 | NM_030762 | TC1200010182.hg.1 |
| GNAT3 | 8.211151 | NM_001102386 | TC0700011624.hg.1 |
| BST2 | 18.39729 | NM_004335 | TC1900009970.hg.1 |
| GNAI1 | 7.716185 | NM_001256414 | TC0700008181.hg.1 |
| CT45A3 | 8.514448 | NM_001017435 | TC0X00010910.hg.1 |
| ENTPD3 | 8.324273 | NM_001248 | TC0300007117.hg.1 |
| ALDH3A2 | 7.4829698 | NM_000382 | TC1700007189.hg.1 |
| PPIC | 4.463586 | NM_000943 | TC0500011875.hg.1 |
| GTPBP2 | 7.0732126 | NM_001286216 | TC0600011880.hg.1 |
| stawvee | 22,592394 | stawvee.aAug10-unspliced | TC2100007844.hg.1 |
| ID2 | 7.4938555 | NM_002166 | TC0200006627.hg.1 |
| ENC1 | 7.352578 | NM_001256574 | TC0500011146.hg.1 |
| CT45A7 | 9.232579 | NM_001291543 | TC0X00010914.hg.1 |
| SLC16A1 | 10.68156 | NM_001166496 | TC0100015310.hg.1 |
| ME1 | 5.6458917 | NM_002395 | TC0600012434.hg.1 |
| SDCBP2 | 15.830707 | NM_001199784 | TC2000009964.hg.1 |
| PTPDC1 | 7.2160754 | NM_001253829 | TC0900008010.hg.1 |
| GABARAPL1 | 11,915585 | NM_031412 | TC1200006787.hg.1 |
| IGFBP3 | 65.72888 | NM_000598 | TC0700010965.hg.1 |
| VTRNA1-2 | 20.80613 | NR_026704 | TC0500008868.hg.1 |
| ABCB1 | 20,164732 | NM_000927 | TC0700011706.hg.1 |
| CLU | 30.658182 | NM_001831 | TC0800009961.hg.1 |
| MBNL2 | 29.695538 | NM_001306070 | TC1300007774.hg.1 |
| VTRNA1-1 | 139.27454 | NR_026703 | TC0500008867.hg.1 |
| TM4SF1 | 41.006676 | NM_014220 | TC0300012773.hg.1 |
| RUNDC3B | 107,40425 | NM_001134405 | TC0700008261.hg.1 |
| AMACR | 0.059065506 | NM_001167595 | TC0500013297.hg.1 |
| C1QTNF3-AMACR | 0.063421085 | NR_037951 | TC0500013296.hg.1 |
| NCAM2 | 0.015936414 | NM_004540 | TC2100006714.hg.1 |
| PRAC1 | 0.17386907 | NM_032391 | TC1700011002.hg.1 |
| TNFRSF19 | 0.0226596 | NM_001204458 | TC1300006594.hg.1 |
| COLCA1 | 0.05934625 | NM_001302644 | TC1100012285.hg.1 |
| COL12A1 | 0.049540885 | NM_004370 | TC0600012314.hg.1 |
| HMG2P46 | 0.106946535 | NR_022014 | TC1500010735.hg.1 |

| Gene Symbol | Log2 ratio | mRNA Accession | Probe Set ID |
|----------------|--------------------------|-----------------------------|-------------------|
| | C42B-R vs. C42B Parental | | |
| EIF1AY | 0.06992707 | NM_001278612 | TC0Y00006730.hg.1 |
| NETO1 | 0.06653976 | NM_001201465 | TC1800009011.hg.1 |
| SSFA2 | 0.061340563 | NM_001130445 | TC0200010164.hg.1 |
| soypoy | 0.08891609 | soypoy.aAug10-unspliced | TC1500008487.hg.1 |
| USP9Y | 0.07599683 | NM_004654 | TC0Y00006629.hg.1 |
| LIN7A | 0.09255946 | NM_004664 | TC1200011385.hg.1 |
| DDX3Y | 0.036294784 | NM_001122665 | TC0Y00006632.hg.1 |
| EPHA6 | 0.057879977 | NM_001080448 | TC0300008082.hg.1 |
| SLC30A4 | 0.045821954 | NM_013309 | TC1500009298.hg.1 |
| NOVA1 | 0.1565771 | NM_002515 | TC1400008780.hg.1 |
| ELOVL7 | 0.049077235 | NM_001104558 | TC0500010869.hg.1 |
| ABCC4 | 0.07541325 | NM_001105515 | TC1300009505.hg.1 |
| CHPT1 | 0.118322596 | NM_020244 | TC1200012698.hg.1 |
| GPR158 | 0.11042797 | NM_020752 | TC1000007061.hg.1 |
| PVRL3 | 0.10431223 | NM_001243286 | TC0300008316.hg.1 |
| IGF1R | 0.03335627 | NM_000875 | TC1500008485.hg.1 |
| snarlyby | 0.12991005 | snarlyby.aAug10-unspliced | TC1500008499.hg.1 |
| RPS4Y1 | 0.02991805 | NM_001008 | TC0Y00007322.hg.1 |
| MIPEP | 0.13367724 | NM_005932 | TC1300008338.hg.1 |
| SYCP3 | 0.20759073 | NM_001177948 | TC1200011710.hg.1 |
| tupoy | 0.23465252 | tupoy.aAug10-unspliced | TC1500010596.hg.1 |
| FAM198B | 0.0953856 | NM_001031700 | TC0400012245.hg.1 |
| MANEA | 0.13947152 | NM_024641 | TC0600008863.hg.1 |
| skersworby | 0.06479586 | skersworby.aAug10-unspliced | TC0300008083.hg.1 |
| NBEAP1 | 0.17064168 | NR_027992 | TC1500008627.hg.1 |
| TENM1 | 0.13144097 | NM_001163278 | TC0X00010734.hg.1 |
| SLC45A3 | 0.054192107 | NM_033102 | TC0100017073.hg.1 |
| KCNN2 | 0.100247286 | NM_001278204 | TC0500008356.hg.1 |
| SMAD5-AS1_2 | 0.12412887 | ENST00000625970 | TC0X00010737.hg.1 |
| GCNT1 | 0.12824103 | NM_001097633 | TC0900012141.hg.1 |
| DLGAP5 | 0.13707192 | NM_001146015 | TC1400009248.hg.1 |
| ODC1 | 0.24383058 | NM_001287188 | TC0200011720.hg.1 |
| slorzu | 0.07500562 | slorzu.aAug10-unspliced | TC1500007124.hg.1 |
| MPC2 | 0.2423454 | NM_001143674 | TC0100016318.hg.1 |
| FXD3 | 0.11792929 | NM_001136007 | TC1900007836.hg.1 |
| PLK1 | 0.1562279 | NM_005030 | TC1600007235.hg.1 |
| RP11-1084J3.1 | 0.14328061 | ENST00000504847 | TC0500007098.hg.1 |
| HMG2P46 | 0.12467633 | ENST00000568669 | TC1500007126.hg.1 |
| RP11-312J18.5 | 0.2535122 | ENST00000425270 | TC0100010319.hg.1 |
| MICAL1 | 0.19511811 | NM_001159291 | TC0600014333.hg.1 |
| FAM162A | 0.24056706 | NM_014367 | TC0300008551.hg.1 |
| RP11-566K19.8 | 0.15390322 | ENST00000616872 | TC1500006504.hg.1 |
| SGK3 | 0.3514962 | NM_013257 | TC0800012312.hg.1 |
| spawma | 0.045882825 | spawma.aAug10-unspliced | TC2100006717.hg.1 |
| GRB10 | 0.1746415 | NM_001001549 | TC0700011054.hg.1 |
| ARG2 | 0.13277169 | NM_001172 | TC1400007500.hg.1 |
| PNMA1 | 0.12000802 | NM_006029 | TC1400009668.hg.1 |
| NUSAP1 | 0.18117537 | NM_001243142 | TC1500006999.hg.1 |
| RHOU | 0.21054453 | NM_021205 | TC0100018355.hg.1 |
| PRMT6 | 0.27755216 | NM_018137 | TC0100009305.hg.1 |
| RP11-467L19.11 | 0.22862989 | ENST00000553844 | TC1500008624.hg.1 |
| SACS | 0.16955183 | NM_001278055 | TC1300008329.hg.1 |
| ELK4 | 0.20709777 | NM_001973 | TC0100017072.hg.1 |
| PLK2 | 0.17837898 | NM_001252226 | TC0500010835.hg.1 |

| Gene Symbol | Log2 ratio | mRNA Accession | Probe Set ID |
|--------------|--------------------------|---------------------------|-------------------------|
| | C42B-R vs. C42B Parental | | |
| CKB | 0.1957353 | NM_001823 | TC1400010317.hg.1 |
| RBM24 | 0.25934535 | NM_001143941 | TC0600007084.hg.1 |
| FAM105A | 0.15613861 | NM_019018 | TC0500006816.hg.1 |
| bloteeby | 0.2365744 | bloteeby.aAug10-unspliced | TC0900010471.hg.1 |
| DUSP4 | 0.11050549 | NM_001394 | TC0800010002.hg.1 |
| PLEKHH1 | 0.13054936 | NM_020715 | TC1400007495.hg.1 |
| BLOC1S6 | 0.21769437 | NM_001311255 | TC1500010736.hg.1 |
| FANCI | 0.23741315 | NM_001113378 | TC1500008252.hg.1 |
| PMEPA1 | 0.11039992 | NM_001255976 | TC2000009604.hg.1 |
| FAM83D | 0.15709096 | NM_030919 | TC2000007341.hg.1 |
| DLX1 | 0.2682124 | NM_001038493 | TC0200009967.hg.1 |
| RBM3 | 0.15596639 | NM_006743 | TC0X00007195.hg.1 |
| SPDEF | 0.18106687 | NM_001252294 | TC0600011590.hg.1 |
| CDK1 | 0.15799786 | NM_001170406 | TC1000007748.hg.1 |
| KIF14 | 0.24324186 | NM_001305792 | TC0100016891.hg.1 |
| AADAT | 0.15300687 | NM_001286682 | TC0400012396.hg.1 |
| UAP1 | 0.31822258 | NM_003115 | TC0100010381.hg.1 |
| MIPOL1 | 0.2759439 | NM_001195296 | TC1400006943.hg.1 |
| GNPNAT1 | 0.23473144 | NM_198066 | TC1400009190.hg.1 |
| bawver | 0.17049104 | bawver.aAug10-unspliced | TC2000009606.hg.1 |
| CCNA2 | 0.37050804 | NM_001237 | TC0400011748.hg.1 |
| TOP2A | 0.1720557 | NM_001067 | TC1700010618.hg.1 |
| LRIG1 | 0.11914799 | ENST00000631853 | TSUnmapped00000527.hg.1 |
| DSG2 | 0.18742837 | NM_001943 | TC1800007014.hg.1 |
| UBE2E3 | 0.30076867 | NM_001278554 | TC0200010152.hg.1 |
| lerchar | 0.2866356 | lerchar.aAug10-unspliced | TC1200011312.hg.1 |
| HNRNPF | 0.35788873 | NM_001098204 | TC1000010438.hg.1 |
| LEO1 | 0.32642314 | NM_001286430 | TC1500009446.hg.1 |
| NUP58 | 0.2296493 | NM_001008564 | TC1300006641.hg.1 |
| CCNB2 | 0.12473247 | NM_004701 | TC1500007392.hg.1 |
| MCTP2 | 0.20682152 | NM_001159643 | TC1500010792.hg.1 |
| C1QTNF9B-AS1 | 0.27327463 | NM_001014442 | TC1300006599.hg.1 |
| PDS5B | 0.3102115 | NM_015032 | TC1300006810.hg.1 |
| EFNA5 | 0.18636826 | NM_001962 | TC0500011648.hg.1 |
| CDKN3 | 0.2098086 | NM_001130851 | TC1400007201.hg.1 |
| CENPU | 0.25246412 | NM_024629 | TC0400012620.hg.1 |
| FAM214A | 0.25739858 | NM_001286495 | TC1500009460.hg.1 |
| MBOAT2 | 0.22546573 | NM_138799 | TC0200016626.hg.1 |
| MMP16 | 0.15111978 | NM_005941 | TC0800011041.hg.1 |
| DEGS1 | 0.27528557 | NM_003676 | TC0100011736.hg.1 |
| HSBP1L1 | 0.23926227 | NM_001136180 | TC1800007829.hg.1 |
| RFC3 | 0.29012954 | NM_002915 | TC1300006847.hg.1 |
| KCNH8 | 0.18288943 | NM_144633 | TC0300006781.hg.1 |
| HOMER2 | 0.31101528 | NM_004839 | TC1500010251.hg.1 |
| ST7 | 0.23107894 | NM_018412 | TC0700008882.hg.1 |
| FKBP5 | 0.18159579 | NM_001145775 | TC0600011635.hg.1 |
| ARHGAP11A | 0.2558602 | ENST00000633634 | TSUnmapped00000695.hg.1 |
| TSTA3 | 0.24702784 | NM_003313 | TC0800012147.hg.1 |
| TOX3 | 0.26068604 | NM_001080430 | TC1600010316.hg.1 |
| RP11-32B5.2 | 0.28276327 | ENST00000555285 | TC1500008647.hg.1 |
| KIF2C | 0.1590539 | NM_001297655 | TC0100008101.hg.1 |
| OSBPL8 | 0.2552854 | NM_001003712 | TC1200011321.hg.1 |
| SETBP1 | 0.27496424 | NM_001130110 | TC1800007186.hg.1 |
| DEPDC1 | 0.24050532 | NM_001114120 | TC0100014543.hg.1 |

| Gene Symbol | Log2 ratio | mRNA Accession | Probe Set ID |
|-------------|--------------------------|----------------------------|-------------------|
| | C42B-R vs. C42B Parental | | |
| LGALS8 | 0.32247704 | NM_006499 | TC0100012097.hg.1 |
| PRC1 | 0.1779887 | NM_001267580 | TC1500010463.hg.1 |
| OGDH | 0.38713583 | NM_001003941 | TC0700007392.hg.1 |
| TTK | 0.20442137 | NM_001166691 | TC0600008630.hg.1 |
| ALDH1A3 | 0.4241392 | NM_000693 | TC1500010800.hg.1 |
| SMARCD2 | 0.28894892 | NM_001098426 | TC1700011424.hg.1 |
| glaskaw | 0.20407212 | glaskaw.aAug10-unspliced | TC1500008488.hg.1 |
| NRIP1 | 0.18133456 | NM_003489 | TC2100008545.hg.1 |
| FAM135A | 0.36547872 | NM_001105531 | TC0600008468.hg.1 |
| NDC80 | 0.1921163 | NM_006101 | TC1800006484.hg.1 |
| SMC4 | 0.31495026 | NM_001002800 | TC0300009337.hg.1 |
| NLGN4Y | 0.22973306 | NM_001164238 | TC0Y00006651.hg.1 |
| mureha | 0.20594318 | mureha.aAug10-unspliced | TC0100009308.hg.1 |
| snorgoyby | 0.3110182 | snorgoyby.aAug10-unspliced | TC1200009073.hg.1 |
| torpoy | 0.16098881 | torpoy.aAug10-unspliced | TC1500008495.hg.1 |
| SLC39A10 | 0.36415023 | NM_001127257 | TC0200010328.hg.1 |
| CALML4 | 0.30009294 | NM_001031733 | TC1500010886.hg.1 |
| ZMIZ1 | 0.22366098 | NM_020338 | TC1000008182.hg.1 |
| RWDD2A | 0.24993981 | NM_033411 | TC0600008665.hg.1 |
| ACLY | 0.3235301 | NM_001096 | TC1700010693.hg.1 |
| CENPF | 0.15672778 | NM_016343 | TC0100011581.hg.1 |
| PBK | 0.3631735 | NM_001278945 | TC0800009970.hg.1 |
| FECH | 0.3086865 | NM_000140 | TC1800008776.hg.1 |
| TMPRSS2 | 0.21594428 | NM_001135099 | TC2100008568.hg.1 |
| RASSF3 | 0.21108563 | NM_178169 | TC1200008005.hg.1 |
| TJP1 | 0.32519495 | NM_001301026 | TC1500008840.hg.1 |
| STRN3 | 0.4758815 | NM_001083893 | TC1400008838.hg.1 |
| topoy | 0.13980052 | topoy.aAug10-unspliced | TC1500010597.hg.1 |
| CPNE3 | 0.29288474 | NM_003909 | TC0800008150.hg.1 |
| EIF2S1 | 0.36441037 | NM_004094 | TC1400007494.hg.1 |
| MKI67 | 0.16814242 | NM_001145966 | TC1000012235.hg.1 |
| ACOT2 | 0.25482523 | NM_006821 | TC1400007647.hg.1 |
| gyby | 0.17672156 | gyby.aAug10-unspliced | TC0Y00007075.hg.1 |
| RSL24D1 | 0.45835865 | NM_016304 | TC1500009492.hg.1 |
| CENPN | 0.3301477 | NM_001100624 | TC1600008567.hg.1 |
| CANX | 0.25026622 | NM_001024649 | TC0500009700.hg.1 |
| PRUNE2 | 0.17583582 | NM_001308047 | TC0900010470.hg.1 |
| FLVCR1 | 0.38105702 | NM_014053 | TC0100011549.hg.1 |
| SNORD108 | 0.31748018 | NR_001292 | TC1500006569.hg.1 |
| PTTG1 | 0.27127957 | NM_001282382 | TC0500009281.hg.1 |
| gawflubu | 0.26713425 | gawflubu.aAug10-unspliced | TC1200008010.hg.1 |
| NOP56 | 0.43659714 | NM_006392 | TC2000006518.hg.1 |
| RAB27A | 0.34300104 | NM_004580 | TC1500010866.hg.1 |
| SORD2P | 0.2979169 | ENST00000558556 | TC1500009271.hg.1 |
| CREB3L4 | 0.21225657 | NM_001255978 | TC0100010058.hg.1 |
| PRR11 | 0.31903467 | NM_018304 | TC1700012285.hg.1 |
| skawvybu | 0.34753427 | skawvybu.aAug10-unspliced | TC1700009030.hg.1 |
| IL1R1 | 0.29786736 | NM_000877 | TC0200008666.hg.1 |
| BUD13P1 | 0.327071 | ENST00000603676 | TC1100008833.hg.1 |
| PTGFR | 0.21314067 | NM_000959 | TC0100008812.hg.1 |
| weysperby | 0.18594058 | weysperby.aAug10-unspliced | TC0400006510.hg.1 |
| CORO1B | 0.3642342 | NM_001018070 | TC1100013194.hg.1 |
| ENOX1 | 0.4679353 | NM_001127615 | TC1300008766.hg.1 |
| BDP1 | 0.23886979 | NM_018429 | TC0500007725.hg.1 |

| Gene Symbol | Log2 ratio | mRNA Accession | Probe Set ID |
|-------------|--------------------------|---------------------------|-------------------|
| | C42B-R vs. C42B Parental | | |
| GREB1 | 0.16320696 | NM_014668 | TC0200006725.hg.1 |
| ASPM | 0.21743447 | NM_001206846 | TC0100016831.hg.1 |
| SPRY1 | 0.2334271 | NM_001258038 | TC0400008628.hg.1 |
| snasney | 0.25396127 | snasney.aAug10-unspliced | TC1600011281.hg.1 |
| ATP8A2 | 0.1917579 | NM_016529 | TC1300006643.hg.1 |
| RAB3B | 0.35519183 | NM_002867 | TC0100014191.hg.1 |
| SNRPGP14 | 0.41755953 | ENST00000435400 | TC1300007166.hg.1 |
| chysloby | 0.2265794 | chysloby.aAug10-unspliced | TC0500011649.hg.1 |
| zarta | 0.29425803 | zarta.aAug10-unspliced | TC2100007211.hg.1 |
| CAMKK2 | 0.1714699 | NM_001270485 | TC1200012199.hg.1 |
| PARP1 | 0.35054034 | NM_001618 | TC0100017528.hg.1 |
| snervobo | 0.17004317 | snervobo.aAug10-unspliced | TC0400008186.hg.1 |
| ATAD2 | 0.22080632 | NM_014109 | TC0800011679.hg.1 |
| weyta | 0.26925874 | weyta.aAug10-unspliced | TC2100008208.hg.1 |
| SMS | 0.2649469 | NM_001258423 | TC0X00006770.hg.1 |
| MALT1 | 0.36564657 | NM_006785 | TC1800007431.hg.1 |
| SLC44A4 | 0.19461238 | ENST00000229729 | TC0600011464.hg.1 |
| GLUD1P3 | 0.35461098 | NR_048575 | TC1000008044.hg.1 |
| jorsubu | 0.3946707 | jorsubu.aAug10-unspliced | TC2000007999.hg.1 |
| FAM8A1 | 0.3006653 | NM_016255 | TC0600007092.hg.1 |
| BCL6 | 0.36069652 | NM_001130845 | TC0300013471.hg.1 |
| HOXB13 | 0.35708195 | NM_006361 | TC1700011004.hg.1 |
| NPEPPS | 0.37399438 | NM_006310 | TC1700008128.hg.1 |
| PDE10A | 0.36599797 | NM_001130690 | TC0600014366.hg.1 |
| HIST1H1B | 0.24172328 | NM_005322 | TC0600011232.hg.1 |
| ADAMTS1 | 0.29155067 | NM_006988 | TC2100007821.hg.1 |
| UTRN | 0.2289929 | NM_007124 | TC0600009712.hg.1 |
| lorby | 0.17849019 | lorby.aAug10-unspliced | TC0Y00007076.hg.1 |
| TXLNGY | 0.24385932 | NR_045128 | TC0Y00006722.hg.1 |
| THBS1 | 0.29709524 | NM_003246 | TC1500006925.hg.1 |
| KLK2 | 0.36345062 | NM_001002231 | TC1900008608.hg.1 |
| TXNRD2 | 0.2685855 | NM_001282512 | TC2200008001.hg.1 |
| sharbo | 0.2386192 | sharbo.aAug10-unspliced | TC0Y00007303.hg.1 |
| blerbo | 0.2386192 | blerbo.aAug10-unspliced | TC0Y00007308.hg.1 |
| PNKD | 0.29503325 | NM_001077399 | TC0200010791.hg.1 |
| teypoy | 0.36982593 | teypoy.aAug10-unspliced | TC1500010601.hg.1 |
| TIMM21 | 0.47899324 | NM_014177 | TC1800007667.hg.1 |
| ECI2 | 0.34800848 | NM_001166010 | TC0600010647.hg.1 |
| KRR1 | 0.40118256 | NM_007043 | TC1200011301.hg.1 |
| ATP5A1 | 0.35740972 | NM_001001935 | TC1800008584.hg.1 |
| ERGIC1 | 0.35517403 | NM_001031711 | TC0500009470.hg.1 |
| TMEM144 | 0.36965886 | NM_018342 | TC0400012854.hg.1 |
| SERINC5 | 0.23867491 | NM_001174071 | TC0500011260.hg.1 |
| SLC25A6 | 0.46236864 | NM_001636 | TC0Y00006882.hg.1 |
| DSC2 | 0.2763578 | NM_004949 | TC1800009268.hg.1 |
| RPS16P5 | 0.41788086 | NR_046241 | TC0600012073.hg.1 |
| CKMT1A | 0.38017067 | NM_001015001 | TC1500007067.hg.1 |
| ARF6 | 0.324121 | NM_001663 | TC1400007098.hg.1 |
| juber | 0.49661344 | juber.aAug10-unspliced | TC0100006832.hg.1 |
| H2AFY2 | 0.44288647 | NM_018649 | TC1000007913.hg.1 |
| PIGH | 0.4095004 | NM_004569 | TC1400009490.hg.1 |
| MCCC2 | 0.3196483 | NM_022132 | TC0500007729.hg.1 |
| CDC20 | 0.28666273 | NM_001255 | TC0100008057.hg.1 |
| ZBTB24 | 0.26842353 | NM_001164313 | TC0600014332.hg.1 |

| Gene Symbol | Log2 ratio | mRNA Accession | Probe Set ID |
|--------------|--------------------------|---------------------------|-------------------------|
| | C42B-R vs. C42B Parental | | |
| SIM2 | 0.5361881 | NM_005069 | TC2100007056.hg.1 |
| NKX3-1 | 0.16435982 | NM_001256339 | TC0800009885.hg.1 |
| XRCC3 | 0.27602476 | NM_001100118 | TC1400010331.hg.1 |
| BUB1 | 0.37584952 | NM_001278616 | TC0200013878.hg.1 |
| SLC10A7 | 0.449806 | NM_001029998 | TC0400012057.hg.1 |
| timemi | 0.38455427 | timemi.aAug10-unspliced | TC1300008339.hg.1 |
| PRKD1 | 0.42288196 | NM_002742 | TC1400008816.hg.1 |
| GPC6 | 0.29989374 | NM_005708 | TC1300007718.hg.1 |
| RNU7-48P | 0.4031717 | uc063pkx.1 | TC0600008470.hg.1 |
| SNX4 | 0.50013524 | NM_003794 | TC0300012252.hg.1 |
| LRIG1 | 0.17873994 | NM_015541 | TC0300011423.hg.1 |
| ARHGAP11B | 0.22825971 | NM_001039841 | TC1500006785.hg.1 |
| munara | 0.3707642 | munara.aAug10-unspliced | TC2100007042.hg.1 |
| SLC45A2 | 0.177171 | NM_001297417 | TC0500010456.hg.1 |
| koysno | 0.23974797 | koysno.aAug10-unspliced | TC1600010318.hg.1 |
| ANP32A | 0.53166085 | NM_006305 | TC1500009865.hg.1 |
| HMGB1 | 0.4518829 | NM_002128 | TC1300008517.hg.1 |
| PFN1 | 0.41848212 | NM_005022 | TC1700009539.hg.1 |
| NUCKS1 | 0.34123877 | NM_022731 | TC0100017075.hg.1 |
| CD2AP | 0.41604674 | NM_012120 | TC0600008183.hg.1 |
| KIF20A | 0.3513622 | NM_005733 | TC0500008777.hg.1 |
| FGD4 | 0.3367115 | NM_001304480 | TC1200012617.hg.1 |
| IL1RAPL1 | 0.20057039 | NM_014271 | TC0X00006865.hg.1 |
| DIAPH3 | 0.34201103 | NM_001042517 | TC1300009088.hg.1 |
| MIR4458 | 0.50332433 | NR_039663 | TC0500006676.hg.1 |
| TDG | 0.47353253 | NM_003211 | TC1200008669.hg.1 |
| KIF15 | 0.33166784 | ENST00000631233 | TSUnmapped00000627.hg.1 |
| MLPH | 0.30814454 | NM_001042467 | TC0200011251.hg.1 |
| NEDD4L | 0.33894095 | NM_001144964 | TC1800007411.hg.1 |
| plerkyby | 0.3199108 | plerkyby.aAug10-unspliced | TC1200008011.hg.1 |
| CLN6 | 0.34336314 | NM_017882 | TC1500010887.hg.1 |
| SLC25A33 | 0.48149735 | NM_032315 | TC0100006781.hg.1 |
| SENP7 | 0.50948095 | NM_001077203 | TC0300011853.hg.1 |
| YBX1 | 0.5049476 | NM_004559 | TC0100008025.hg.1 |
| zarjyby | 0.3353358 | zarjyby.aAug10-unspliced | TC1200011358.hg.1 |
| ABHD14A-ACY1 | 0.43702936 | OTTHUMT00000349691 | TC0300013840.hg.1 |
| sputa | 0.29172438 | sputa.aAug10-unspliced | TC1500007807.hg.1 |
| TYMS | 0.2758343 | NM_001071 | TC1800006448.hg.1 |
| WWC1 | 0.3649045 | NM_001161661 | TC0500009346.hg.1 |
| NEK9 | 0.46871623 | NM_033116 | TC1400009711.hg.1 |
| MELK | 0.31517687 | NM_001256685 | TC0900007129.hg.1 |
| MOAP1 | 0.43198103 | NM_022151 | TC1400010019.hg.1 |
| RRM2 | 0.28806388 | NM_001034 | TC0200006677.hg.1 |
| DAPK1 | 0.36082718 | NM_001288729 | TC0900007807.hg.1 |
| rini | 0.4190027 | rini.aAug10-unspliced | TC0200008897.hg.1 |
| ACSL3 | 0.3783435 | NM_004457 | TC0200010907.hg.1 |
| NEK2 | 0.31032336 | NM_001204182 | TC0100017216.hg.1 |
| EPHA3 | 0.27893412 | NM_005233 | TC0300008029.hg.1 |
| ILF2 | 0.5002116 | NM_001267809 | TC0100015875.hg.1 |
| IFT88 | 0.53109074 | NM_006531 | TC1300006503.hg.1 |
| ESRP2 | 0.36685258 | NM_024939 | TC1600010676.hg.1 |
| NTNG1 | 0.21399915 | NM_001113226 | TC0100009307.hg.1 |
| DEFB134 | 0.49540353 | NM_001302695 | TC0800009626.hg.1 |
| FBXL17 | 0.43809125 | NM_001163315 | TC0500011655.hg.1 |

| Gene Symbol | Log2 ratio | mRNA Accession | Probe Set ID |
|---------------|--------------------------|----------------------------|-------------------|
| | C42B-R vs. C42B Parental | | |
| mimira | 0.48947382 | mimira.aAug10-unspliced | TC0300012539.hg.1 |
| KIF23 | 0.37375492 | NM_001281301 | TC1500007699.hg.1 |
| TAOK3 | 0.13655189 | NM_016281 | TC1200012111.hg.1 |
| ANLN | 0.2862607 | NM_001284301 | TC0700007198.hg.1 |
| SEC23A | 0.45338348 | NM_006364 | TC1400009002.hg.1 |
| DDX24 | 0.4291318 | NM_020414 | TC1400010039.hg.1 |
| foytaby | 0.40464175 | foytaby.aAug10-unspliced | TC0900011475.hg.1 |
| PTCH1 | 0.35308182 | NM_000264 | TC0900010886.hg.1 |
| CCNB1 | 0.25894988 | NM_031966 | TC0500007665.hg.1 |
| roydy | 0.49512893 | roydy.aAug10-unspliced | TC0100011339.hg.1 |
| MTCO3P2 | 0.3840261 | ENST00000457365 | TC1300008341.hg.1 |
| ELF5 | 0.40135887 | NM_001243080 | TC1100010514.hg.1 |
| BEND4 | 0.31355995 | NM_001159547 | TC0400010553.hg.1 |
| KLK3 | 0.28711143 | NM_001030047 | TC1900008607.hg.1 |
| HIST1H2AG | 0.22220252 | NM_021064 | TC0600014083.hg.1 |
| VPS13A | 0.34589922 | NM_001018037 | TC0900007646.hg.1 |
| KIAA0391 | 0.5122039 | NM_001256678 | TC1400010595.hg.1 |
| SNORD116-19 | 0.34560978 | NR_001290 | TC1500010700.hg.1 |
| CDK8 | 0.38814873 | NM_001260 | TC1300006652.hg.1 |
| MTMR6 | 0.3956666 | NM_004685 | TC1300008386.hg.1 |
| sukey | 0.4230447 | sukey.aAug10-unspliced | TC2000009724.hg.1 |
| SGK3 | 0.25628427 | NM_001033578 | TC0800012313.hg.1 |
| SFPQ | 0.43931386 | NM_005066 | TC0100018432.hg.1 |
| BMPR1B | 0.23123476 | NM_001203 | TC0400008183.hg.1 |
| ZNF24 | 0.42688167 | NM_001308123 | TC1800008458.hg.1 |
| LRPPRC | 0.5606997 | NM_133259 | TC0200012418.hg.1 |
| IARS2 | 0.45644376 | NM_018060 | TC0100011648.hg.1 |
| FAM72C | 0.3270693 | NM_001287385 | TC0100015550.hg.1 |
| CCDC59 | 0.4835724 | NM_014167 | TC1200011400.hg.1 |
| HEBP2 | 0.375916 | NM_014320 | TC0600009611.hg.1 |
| SAP18 | 0.5344174 | NM_005870 | TC1300006520.hg.1 |
| SORD | 0.3865239 | NM_003104 | TC1500007107.hg.1 |
| CTD-2165H16.3 | 0.3164789 | ENST00000503819 | TC0500006818.hg.1 |
| RACGAP1 | 0.32185745 | NM_001126103 | TC1200010650.hg.1 |
| narrobo | 0.49617535 | narrobo.aAug10 | TC0100007056.hg.1 |
| CLPX | 0.45414108 | NM_006660 | TC1500009785.hg.1 |
| HJURP | 0.3543657 | NM_001282962 | TC0200016099.hg.1 |
| smoydoybu | 0.29765475 | smoydoybu.aAug10-unspliced | TC0200016199.hg.1 |
| RDH11 | 0.28973332 | NM_001252650 | TC1400010765.hg.1 |
| FOXA1 | 0.33198506 | NM_004496 | TC1400008981.hg.1 |
| DENND1A | 0.48897478 | NM_020946 | TC0900011473.hg.1 |
| foyboyby | 0.46238762 | foyboyby.aAug10-unspliced | TC1400009947.hg.1 |
| RAN | 0.6184955 | NM_001300796 | TC1200009416.hg.1 |
| LIFR | 0.29280463 | NM_001127671 | TC0500010540.hg.1 |
| natobo | 0.44247767 | natobo.aAug10-unspliced | TC1100009113.hg.1 |
| teesparbu | 0.5659554 | teesparbu.aAug10-unspliced | TC0600009212.hg.1 |
| ZNF271P | 0.5083222 | NR_024565 | TC1800009224.hg.1 |
| RP11-299A16.1 | 0.39356023 | ENST00000549144 | TC1200011387.hg.1 |
| MAPK12 | 0.5344366 | NM_001303252 | TC2200009361.hg.1 |
| NR3C2 | 0.27024943 | NM_000901 | TC0400012078.hg.1 |
| ANK3 | 0.4311011 | NM_001149 | TC1000010727.hg.1 |
| ABCC1 | 0.34423995 | ENST00000399408 | TC1600007022.hg.1 |
| AKT1 | 0.42122245 | NM_001014431 | TC1400010377.hg.1 |
| GUCY1A3 | 0.3828525 | NM_000856 | TC0400009086.hg.1 |

| Gene Symbol | Log2 ratio | mRNA Accession | Probe Set ID |
|---------------|--------------------------|---------------------------|-------------------------|
| | C42B-R vs. C42B Parental | | |
| SKA2 | 0.49627495 | NM_001100595 | TC1700011281.hg.1 |
| PHF8 | 0.37629598 | NM_001184896 | TC0X00009773.hg.1 |
| SLC41A1 | 0.35808146 | NM_173854 | TC0100017079.hg.1 |
| fleejybu | 0.3452867 | fleejybu.aAug10-unspliced | TC0200013632.hg.1 |
| gospoy | 0.32074985 | gospoy.aAug10-unspliced | TC1500007028.hg.1 |
| NFIB | 0.3704507 | NM_001190737 | TC0900009569.hg.1 |
| CNKSR2 | 0.3673903 | NM_001168647 | TC0X00006758.hg.1 |
| jeezaw | 0.421056 | jeezaw.aAug10-unspliced | TC1500006568.hg.1 |
| ETFB | 0.41879007 | NM_001014763 | TC1900012016.hg.1 |
| ZNF397 | 0.48176062 | NM_001135178 | TC1800007071.hg.1 |
| RP11-134K13.2 | 0.38016275 | ENST00000454078 | TC0600012254.hg.1 |
| HNRNPAB | 0.34353036 | NM_004499 | TC0500009652.hg.1 |
| pynawbu | 0.44925985 | pynawbu.aAug10-unspliced | TC0100006885.hg.1 |
| KPNB1 | 0.33728483 | NM_001276453 | TC1700008133.hg.1 |
| TPT1P2 | 0.5830669 | ENST00000413105 | TC0200015576.hg.1 |
| ZC2HC1C | 0.59368634 | NM_001042430 | TC1400007698.hg.1 |
| BAG1 | 0.45525038 | NM_001172415 | TC0900009855.hg.1 |
| noynoy | 0.4063627 | noynoy.aAug10-unspliced | TC1300009675.hg.1 |
| SNRPA1 | 0.5292234 | NM_003090 | TC1500010659.hg.1 |
| FANCD2 | 0.45731786 | NM_001018115 | TC0300006575.hg.1 |
| TBRG1 | 0.58383816 | NM_032811 | TC1100009395.hg.1 |
| UTY | 0.3506408 | NM_001258249 | TC0Y00007074.hg.1 |
| CYC1 | 0.40678605 | NM_001916 | TC0800009239.hg.1 |
| GABBR1 | 0.57983565 | NM_021903 | TC0600014256.hg.1 |
| PALMD | 0.4039666 | NM_017734 | TC0100009183.hg.1 |
| CXCL12 | 0.28160012 | NM_000609 | TC1000010468.hg.1 |
| RNF157 | 0.5439441 | NM_052916 | TC1700011787.hg.1 |
| FUZ | 0.37984273 | NM_001171937 | TC1900012001.hg.1 |
| ANGEL2 | 0.41840667 | NM_001300753 | TC0100017267.hg.1 |
| PRKCD | 0.39211175 | NM_006254 | TC0300007512.hg.1 |
| KLHL20 | 0.39303213 | NM_014458 | TC0100010654.hg.1 |
| KIF22 | 0.3722794 | NM_001256269 | TC1600007425.hg.1 |
| NXPE3 | 0.35135555 | NM_001134456 | TC0300013854.hg.1 |
| reymeybo | 0.56688315 | reymeybo.aAug10-unspliced | TC0100012420.hg.1 |
| TCP1 | 0.40203378 | NM_001008897 | TC0600013762.hg.1 |
| RMDN1 | 0.42244607 | NM_001286707 | TC0800011021.hg.1 |
| NDUFB10 | 0.33624062 | NM_004548 | TC1600006574.hg.1 |
| EMC9 | 0.47888026 | NM_016049 | TC1400010720.hg.1 |
| NUF2 | 0.26165643 | NM_031423 | TC0100010397.hg.1 |
| RAB4A | 0.36328965 | NM_001271998 | TC0100011901.hg.1 |
| NGDN | 0.47207433 | NM_001042635 | TC1400010577.hg.1 |
| AC254944.3 | 0.25866434 | ENST00000633373 | TSUnmapped00000642.hg.1 |
| MICAL2 | 0.37170386 | NM_001282663 | TC1100012966.hg.1 |
| APEX1 | 0.35886616 | NM_001244249 | TC1400006519.hg.1 |
| TMEM106C | 0.5600749 | NM_001143841 | TC1200007499.hg.1 |
| SNX5 | 0.43134022 | NM_001282454 | TC2000009986.hg.1 |
| EPPK1 | 0.36392793 | NM_031308 | TC0800012173.hg.1 |
| ANKRD29 | 0.45737383 | NM_001308238 | TC1800008287.hg.1 |
| larklabu | 0.45057094 | larklabu.aAug10-unspliced | TC1000008187.hg.1 |
| KLF5 | 0.32394165 | NM_001286818 | TC1300007491.hg.1 |
| PLK4 | 0.48964557 | NM_001190799 | TC0400008664.hg.1 |
| TPD52 | 0.5001518 | NM_001025252 | TC0800012433.hg.1 |
| PEBP1 | 0.41023007 | NM_002567 | TC1200009071.hg.1 |
| GLUD1 | 0.41531926 | NM_005271 | TC1000011323.hg.1 |

| Gene Symbol | Log2 ratio | mRNA Accession | Probe Set ID |
|-------------|--------------------------|----------------------------|-------------------|
| | C42B-R vs. C42B Parental | | |
| ZFYVE21 | 0.3636023 | NM_001198953 | TC1400008415.hg.1 |
| RIOK3 | 0.45406142 | NM_003831 | TC1800006889.hg.1 |
| TMEM141 | 0.5360678 | NM_032928 | TC0900012189.hg.1 |
| ECT2 | 0.38334417 | NM_001258315 | TC0300009524.hg.1 |
| ADK | 0.62799495 | NM_001123 | TC1000008063.hg.1 |
| PRKAR1B | 0.35480964 | NM_001164758 | TC0700009980.hg.1 |
| CNTN3 | 0.3065296 | NM_020872 | TC0300011566.hg.1 |
| GSS | 0.5023408 | NM_000178 | TC2000008951.hg.1 |
| hetura | 0.42098624 | hetura.aAug10-unspliced | TC0900010567.hg.1 |
| steesawby | 0.3039175 | steesawby.aAug10-unspliced | TC0600007620.hg.1 |
| ARHGFE26 | 0.43793955 | NM_001251962 | TC0300009247.hg.1 |
| PDE9A | 0.33857653 | NM_001001567 | TC2100007263.hg.1 |
| yaka | 0.40206742 | yaka.aAug10-unspliced | TC0400012080.hg.1 |
| ADAM9 | 0.5030958 | NM_003816 | TC0800007367.hg.1 |
| EFCAB12 | 0.238082 | NM_207307 | TC0300012392.hg.1 |
| TLK1 | 0.3972267 | NM_001136554 | TC0200014893.hg.1 |
| MTHFD1 | 0.46834892 | NM_005956 | TC1400007440.hg.1 |
| UBE2T | 0.43260032 | NM_001310326 | TC0100016952.hg.1 |
| SLC39A6 | 0.38609526 | NM_001099406 | TC1800008474.hg.1 |
| ELOVL5 | 0.49991712 | NM_001242828 | TC0600012072.hg.1 |
| ZNF217 | 0.4334751 | NM_006526 | TC2000009504.hg.1 |
| PAK1IP1 | 0.46362332 | NM_017906 | TC0600006926.hg.1 |
| RUVBL1 | 0.53666615 | NM_003707 | TC0300014041.hg.1 |
| POLQ | 0.3772788 | NM_199420 | TC0300012164.hg.1 |
| RAD51 | 0.46302542 | NM_001164269 | TC1500006965.hg.1 |
| CKAP2 | 0.30626553 | NM_001098525 | TC1300007248.hg.1 |
| FAM21C | 0.59869045 | NM_001169106 | TC1000007483.hg.1 |
| flasmee | 0.55927515 | flasmee.aAug10-unspliced | TC1700007664.hg.1 |
| CRNKL1 | 0.45674998 | NM_001278625 | TC2000008573.hg.1 |
| ACADSB | 0.41667643 | NM_001609 | TC1000009169.hg.1 |
| PIAS2 | 0.5429803 | NM_004671 | TC1800009277.hg.1 |
| spofeybu | 0.3030643 | spofeybu.aAug10-unspliced | TC0200010153.hg.1 |
| TMEM87A | 0.4031513 | NM_001110503 | TC1500009185.hg.1 |
| STMN1 | 0.4238215 | NM_001145454 | TC0100013369.hg.1 |
| ISYNA1 | 0.44977745 | NM_001170938 | TC1900010016.hg.1 |
| RIPK4 | 0.2818225 | NM_020639 | TC2100008222.hg.1 |
| FAM111A | 0.4508963 | NM_001142519 | TC1100007728.hg.1 |
| ZFYVE16 | 0.4000161 | NM_001105251 | TC0500007912.hg.1 |
| MYO6 | 0.41921926 | NM_001300899 | TC0600008569.hg.1 |
| PPP4R1 | 0.47668493 | NM_001042388 | TC1800008035.hg.1 |
| C1QTNF3 | 0.28285766 | NM_030945 | TC0500013298.hg.1 |
| EZR | 0.36998093 | NM_001111077 | TC0600013727.hg.1 |
| DCXR | 0.2795626 | NM_001195218 | TC1700012089.hg.1 |
| DDT | 0.3362822 | NM_001084392 | TC2200008203.hg.1 |
| TTC21B | 0.3856894 | NM_024753 | TC0200016747.hg.1 |
| MCCC1 | 0.513701 | NM_001293273 | TC0300013334.hg.1 |
| MIPOL1 | 0.4788423 | ENST00000624539 | TC1400006945.hg.1 |
| FAM103A1 | 0.47701406 | BC003627_2 | TC0600013898.hg.1 |
| ZBTB16 | 0.3234695 | NM_001018011 | TC1100009101.hg.1 |
| SBNO1 | 0.5172215 | NM_001167856 | TC1200012267.hg.1 |
| SLC24A5 | 0.48911297 | NM_205850 | TC1500007156.hg.1 |
| titari | 0.3180082 | titari.aAug10-unspliced | TC1700010782.hg.1 |
| suraw | 0.5245537 | suraw.aAug10-unspliced | TC2000007871.hg.1 |
| BAZ1A | 0.5356686 | NM_013448 | TC1400008921.hg.1 |

| Gene Symbol | Log2 ratio | mRNA Accession | Probe Set ID |
|---------------|--------------------------|-----------------------------|-------------------|
| | C42B-R vs. C42B Parental | | |
| KIF15 | 0.3740754 | NM_020242 | TC0300007223.hg.1 |
| SLC4A4 | 0.29856068 | NM_001098484 | TC0400007799.hg.1 |
| GRK1 | 0.55618113 | BC140945 | TC1300008149.hg.1 |
| SPDL1 | 0.43520954 | NM_017785 | TC0500009377.hg.1 |
| ADSL | 0.41026914 | NM_000026 | TC2200009275.hg.1 |
| skarsteyby | 0.443283 | skarsteyby.aAug10-unspliced | TC0500008264.hg.1 |
| ALDH6A1 | 0.36875987 | NM_001278593 | TC1400009684.hg.1 |
| EVL | 0.5096684 | NM_016337 | TC1400008193.hg.1 |
| TTC6 | 0.34719765 | NM_001310135 | TC1400010599.hg.1 |
| SLC25A6 | 0.49791104 | ENST00000381401 | TC0X00008908.hg.1 |
| VASH2 | 0.4435645 | NM_001136474 | TC0100011552.hg.1 |
| PRMT5 | 0.48022914 | NM_001039619 | TC1400008684.hg.1 |
| NDUFV1 | 0.39669672 | NM_001166102 | TC1100008147.hg.1 |
| skaspeyby | 0.30640018 | skaspeyby.aAug10-unspliced | TC0600008864.hg.1 |
| swerslyby | 0.3140467 | swerslyby.aAug10-unspliced | TC0300011837.hg.1 |
| LARP7 | 0.5211242 | NM_001267039 | TC0400008443.hg.1 |
| leebly | 0.5281036 | leebly.aAug10-unspliced | TC1800009205.hg.1 |
| HEATR5A | 0.45703176 | NM_015473 | TC1400010728.hg.1 |
| PIK3AP1 | 0.37018564 | NM_152309 | TC1000011524.hg.1 |
| sleyblaby | 0.30314198 | sleyblaby.aAug10-unspliced | TC0500011736.hg.1 |
| HMG2 | 0.51322186 | NM_005517 | TC0100007463.hg.1 |
| PPM1A | 0.61204994 | NM_021003 | TC1400007354.hg.1 |
| KIAA0101 | 0.31054652 | NM_001029989 | TC1500009738.hg.1 |
| CAPS2 | 0.5079297 | NM_001286547 | TC1200011298.hg.1 |
| AURKA | 0.32011145 | NM_003600 | TC2000009550.hg.1 |
| skoter | 0.55102247 | skoter.aAug10-unspliced | TC1500008777.hg.1 |
| RPS6KC1 | 0.36114416 | NM_001136138 | TC0100011554.hg.1 |
| NCAPD3 | 0.62688273 | NM_015261 | TC1100012917.hg.1 |
| spawsmoybu | 0.21681145 | spawsmoybu.aAug10-unspliced | TC0700008883.hg.1 |
| PSMA4 | 0.46559218 | NM_001102667 | TC1500007979.hg.1 |
| IVD | 0.36071888 | NM_001159508 | TC1500010720.hg.1 |
| UQCRC1 | 0.4459037 | NM_003365 | TC0300011029.hg.1 |
| HIST1H3I | 0.30473334 | NM_003533 | TC0600011233.hg.1 |
| skoyklee | 0.4531795 | skoyklee.aAug10-unspliced | TC1500009624.hg.1 |
| ANKRD18B | 0.5432424 | NM_001244752 | TC0900006986.hg.1 |
| woysperby | 0.34512398 | woysperby.aAug10-unspliced | TC0400009724.hg.1 |
| FAM72D | 0.31749475 | NM_207418 | TC0100009723.hg.1 |
| HMG2P22 | 0.5714515 | ENST00000427588 | TC0200013645.hg.1 |
| ACY1 | 0.37561074 | NM_000666 | TC0300013839.hg.1 |
| EFCAB11 | 0.46855548 | NM_001284266 | TC1400010775.hg.1 |
| RAD23B | 0.49676886 | NM_001244713 | TC0900008345.hg.1 |
| HIST1H4C | 0.35986647 | NM_003542 | TC0600007268.hg.1 |
| PA2G4 | 0.49768442 | NM_006191 | TC1200012644.hg.1 |
| CTD-2089O24.2 | 0.5559397 | ENST00000509899 | TC0500011693.hg.1 |
| DIP2A | 0.5080272 | NM_001146115 | TC2100007467.hg.1 |
| GALK2 | 0.4717398 | NM_001001556 | TC1500007180.hg.1 |
| GFM1 | 0.5042876 | NM_001308164 | TC0300009313.hg.1 |
| ECHDC3 | 0.4734487 | NM_024693 | TC1000006782.hg.1 |
| BIRC5 | 0.45699316 | NM_001012270 | TC1700009043.hg.1 |
| SDR39U1 | 0.48289615 | NM_001290292 | TC1400008760.hg.1 |
| AS3MT | 0.5401746 | NM_020682 | TC1000012496.hg.1 |
| LOC440434 | 0.52549684 | NR_036750_3 | TC1700010516.hg.1 |
| MPHOSPH9 | 0.35958567 | NM_022782 | TC1200012263.hg.1 |
| HMG2P6 | 0.48975417 | OTTHUMT00000408473 | TC1400008772.hg.1 |

| Gene Symbol | Log2 ratio | mRNA Accession | Probe Set ID |
|---------------|--------------------------|----------------------------|-------------------|
| | C42B-R vs. C42B Parental | | |
| KIF20B | 0.42841735 | NM_001284259 | TC1000008406.hg.1 |
| GTF2I | 0.55467445 | NM_001163636 | TC0700008010.hg.1 |
| TBC1D8 | 0.44864577 | NM_001102426 | TC0200016717.hg.1 |
| DCAF6 | 0.4392419 | NM_001017977 | TC0100010518.hg.1 |
| swypoby | 0.3998323 | swypoby.aAug10-unspliced | TC1400007502.hg.1 |
| ACIN1 | 0.53526825 | NM_001164814 | TC1400008694.hg.1 |
| GCFC2 | 0.41635793 | NM_001201334 | TC0200013137.hg.1 |
| GET4 | 0.35419556 | NM_015949 | TC0700013324.hg.1 |
| NCAPG | 0.36457863 | NM_022346 | TC0400006994.hg.1 |
| FPGS | 0.40481937 | NM_001018078 | TC0900008827.hg.1 |
| CIPC | 0.487878 | NM_033426 | TC1400010634.hg.1 |
| FAM72B | 0.32704642 | NM_001100910 | TC0100015509.hg.1 |
| morzorby | 0.4562262 | morzorby.aAug10-unspliced | TC0500007642.hg.1 |
| UBE2E4P | 0.39943308 | NR_110506 | TC0X00006666.hg.1 |
| WLS | 0.47495472 | NM_001002292 | TC0100014531.hg.1 |
| CDH26 | 0.44236112 | NM_021810 | TC2000007943.hg.1 |
| narna | 0.41452712 | narna.aAug10-unspliced | TC1100012367.hg.1 |
| swosa | 0.517973 | swosa.aAug10 | TC1700011559.hg.1 |
| kawwer | 0.570126 | kawwer.aAug10-unspliced | TC1700010483.hg.1 |
| flarabu | 0.3971643 | flarabu.aAug10-unspliced | TC0100017071.hg.1 |
| ACACA | 0.4545591 | NM_198834 | TC1700010488.hg.1 |
| moromi | 0.35541314 | moromi.aAug10-unspliced | TC1400008821.hg.1 |
| RP11-996F15.4 | 0.4840695 | OTTHUMT00000474523 | TC1200010246.hg.1 |
| HIST2H3A | 0.30260772 | ENST00000403683 | TC0100009877.hg.1 |
| glorgler | 0.5126461 | glorgler.aAug10-unspliced | TC1100009830.hg.1 |
| PMCHL2 | 0.30508903 | NR_003922 | TC0500007722.hg.1 |
| florgar | 0.58892053 | florgar.aAug10-unspliced | TC0X00010585.hg.1 |
| bygar | 0.58892053 | bygar.aAug10-unspliced | TC0X00010578.hg.1 |
| jubabu | 0.3765409 | jubabu.aAug10-unspliced | TC0300008185.hg.1 |
| DNAH5 | 0.23655511 | NM_001369 | TC0500010148.hg.1 |
| C1QBP | 0.58807564 | NM_001212 | TC1700012341.hg.1 |
| CENPJ | 0.4520132 | NM_018451 | TC1300008371.hg.1 |
| NR6A1 | 0.54203063 | NM_001278546 | TC0900011501.hg.1 |
| RP11-490K7.1 | 0.5037431 | ENST00000441274 | TC0100013554.hg.1 |
| smuswawbu | 0.41096988 | smuswawbu.aAug10-unspliced | TC0500008713.hg.1 |
| vollo | 0.31745464 | vollo.aAug10-unspliced | TC1800007419.hg.1 |
| RBM12 | 0.47325093 | NM_001198838 | TC2000010007.hg.1 |
| METTL3 | 0.45550555 | NM_019852 | TC1400008636.hg.1 |
| TPX2 | 0.3373943 | NM_012112 | TC2000007089.hg.1 |
| HGH1 | 0.44923848 | NM_016458 | TC0800009242.hg.1 |
| CDC73 | 0.60068417 | NM_024529 | TC0100011027.hg.1 |
| KPNA2 | 0.46684107 | NM_002266 | TC1700008719.hg.1 |
| reeteebo | 0.43674248 | reeteebo.aAug10-unspliced | TC0900011112.hg.1 |
| cheeklar | 0.5044209 | cheeklar.aAug10-unspliced | TC1800007906.hg.1 |
| rerplar | 0.37952906 | rerplar.aAug10-unspliced | TC1100007871.hg.1 |
| HN1 | 0.45646855 | NM_001002032 | TC1700012468.hg.1 |
| RP11-380B4.3 | 0.33276784 | OTTHUMT00000474773 | TC1300006813.hg.1 |
| FAM216A | 0.5550853 | NM_013300 | TC1200008843.hg.1 |
| swawchu | 0.33273834 | swawchu.aAug10-unspliced | TC1200009726.hg.1 |
| ACOT1 | 0.44290358 | NM_001037161 | TC1400007644.hg.1 |
| ARFGEF3 | 0.38207057 | NM_020340 | TC0600009606.hg.1 |
| SLC2A3P1 | 0.589518 | ENST00000519666 | TC0500013398.hg.1 |
| LRRC58 | 0.4514726 | NM_001099678 | TC0300012143.hg.1 |
| C15orf61 | 0.5366675 | NM_001143936 | TC1500007644.hg.1 |

| Gene Symbol | Log2 ratio | mRNA Accession | Probe Set ID |
|-----------------|--------------------------|----------------------------|-------------------|
| | C42B-R vs. C42B Parental | | |
| COPS3 | 0.5833752 | NM_001199125 | TC1700009928.hg.1 |
| ATP6V1G2-DDX39B | 0.47000057 | OTTHUMT00000355085 | TC0600014259.hg.1 |
| SLC25A30 | 0.35315812 | NM_001010875 | TC1300008824.hg.1 |
| PLCB4 | 0.3078938 | NM_000933 | TC2000006674.hg.1 |
| SIRT1 | 0.48724964 | NM_001142498 | TC1000007846.hg.1 |
| ferborbo | 0.5128306 | ferborbo.aAug10-unspliced | TC0400012474.hg.1 |
| vawslorbu | 0.40539122 | vawslorbu.aAug10-unspliced | TC0700010158.hg.1 |
| HIST2H3A | 0.28990564 | NM_001005464 | TC0100015701.hg.1 |
| doyskabu | 0.3917938 | doyskabu.aAug10-unspliced | TC0900012071.hg.1 |
| SNW1 | 0.5053038 | NM_012245 | TC1400009793.hg.1 |
| SRGAP1 | 0.54046434 | NM_020762 | TC1200007992.hg.1 |
| RCN2 | 0.58248293 | NM_001271837 | TC1500007926.hg.1 |
| snogarbu | 0.39408144 | snogarbu.aAug10-unspliced | TC0200015740.hg.1 |
| CBS | 0.49238095 | NM_001178008 | TC2100008285.hg.1 |
| USP22 | 0.5444251 | NM_015276 | TC1700010076.hg.1 |
| NSMAF | 0.5124762 | NM_001144772 | TC0800010553.hg.1 |
| snamu | 0.50297415 | snamu.aAug10-unspliced | TC1000008093.hg.1 |
| CTPS2 | 0.5248332 | NM_001144002 | TC0X00009153.hg.1 |
| THOC3 | 0.442024 | NM_032361 | TC0500013414.hg.1 |
| CPNE7 | 0.3142505 | NM_014427 | TC1600008889.hg.1 |
| shuferbu | 0.55468684 | shuferbu.aAug10-unspliced | TC0300012858.hg.1 |
| chawshaby | 0.383499 | chawshaby.aAug10-unspliced | TC0500009473.hg.1 |
| THOC5 | 0.6010576 | NM_001002877 | TC2200009335.hg.1 |
| RP11-492D6.3 | 0.50888956 | ENST00000557586 | TC1500008611.hg.1 |
| SNRPN | 0.5263334 | NM_003097 | TC1500010698.hg.1 |
| FAM103A1 | 0.46384513 | NM_031452 | TC1500008105.hg.1 |
| UNC5A | 0.49364874 | NM_133369 | TC0500009603.hg.1 |
| FAM50B | 0.60161567 | NM_012135 | TC0600006714.hg.1 |
| SFXN2 | 0.38283017 | NM_178858 | TC1000008749.hg.1 |
| HMG20B | 0.3193636 | NM_006339 | TC1900006645.hg.1 |
| CDC42SE1 | 0.5644814 | NM_001038707 | TC0100018486.hg.1 |
| FAM179B | 0.40688616 | NM_001308120 | TC1400007033.hg.1 |
| DHFR | 0.5037779 | BC070280 | TC1800008333.hg.1 |
| IGF1 | 0.388195 | NM_000618 | TC1200011727.hg.1 |
| basko | 0.546372 | basko.aAug10-unspliced | TC1800009037.hg.1 |
| PPP5C | 0.4715483 | NM_001204284 | TC1900008372.hg.1 |
| RFX7 | 0.4799321 | NM_022841 | TC1500009514.hg.1 |
| GNG5 | 0.64146954 | NM_005274 | TC0100014752.hg.1 |
| HIST1H4J | 0.4420709 | NM_021968 | TC0600007378.hg.1 |
| RP11-292K15.1 | 0.4901269 | ENST00000604494 | TC0200008611.hg.1 |
| CCDC88C | 0.42444608 | NM_001080414 | TC1400009980.hg.1 |
| HELLS | 0.4641056 | NM_001289067 | TC1000012477.hg.1 |
| ZFY | 0.41554436 | NM_001145275 | TC0Y00006487.hg.1 |
| ZNHIT3 | 0.6281227 | NM_001281432 | TC1700007634.hg.1 |
| NVL | 0.3446228 | NM_001243146 | TC0100017467.hg.1 |
| LPAR3 | 0.43545845 | NM_012152 | TC0100014766.hg.1 |
| NPPC | 0.44196656 | NM_024409 | TC0200016047.hg.1 |
| vowaw | 0.44001612 | vowaw.aAug10-unspliced | TC2000008363.hg.1 |
| AP4S1 | 0.53365564 | NM_001128126 | TC1400006833.hg.1 |
| ZNF850 | 0.37326476 | NM_001193552 | TC1900010533.hg.1 |
| USP14 | 0.50795335 | NM_001037334 | TC1800006437.hg.1 |
| jawwu | 0.40663308 | jawwu.aAug10-unspliced | TC1800007865.hg.1 |
| snoydarbu | 0.41579497 | snoydarbu.aAug10-unspliced | TC0200012965.hg.1 |
| MRRF | 0.58635247 | NM_001173512 | TC0900012168.hg.1 |

| Gene Symbol | Log2 ratio | mRNA Accession | Probe Set ID |
|--------------|--------------------------|----------------------------|-------------------------|
| | C42B-R vs. C42B Parental | | |
| PEBP1P2 | 0.45017985 | OTTHUMT00000468819 | TC0200013260.hg.1 |
| GMNN | 0.51811886 | NM_001251989 | TC0600007207.hg.1 |
| bypla | 0.49483213 | bypla.aAug10-unspliced | TC1800006709.hg.1 |
| RP11-511H9.3 | 0.4667998 | ENST00000552036 | TC1200011713.hg.1 |
| STK39 | 0.45183507 | NM_013233 | TC0200014834.hg.1 |
| EIF2AK4 | 0.5377841 | NM_001013703 | TC1500006930.hg.1 |
| marreybu | 0.3624884 | marreybu.aAug10-unspliced | TC0300011558.hg.1 |
| DDTL | 0.3729007 | NM_001084393 | TC2200006874.hg.1 |
| ARHGAP11B | 0.331973 | BC105788 | TC1500010707.hg.1 |
| spuskerbu | 0.44177732 | spuskerbu.aAug10-unspliced | TC0800011666.hg.1 |
| TBC1D3L | 0.4612347 | OTTHUMT00000477403 | TC1700012395.hg.1 |
| flokubo | 0.40294802 | flokubo.aAug10-unspliced | TC0200013843.hg.1 |
| REPS2 | 0.355074 | NM_001080975 | TC0X00006704.hg.1 |
| HIVEP1 | 0.44757175 | NM_002114 | TC0600014074.hg.1 |
| FANCA | 0.47377378 | NM_000135 | TC1600011292.hg.1 |
| ITPK1 | 0.49310368 | NM_001142593 | TC1400010015.hg.1 |
| N6AMT2 | 0.44141588 | NM_174928 | TC1300008264.hg.1 |
| GINS1 | 0.3616711 | NM_021067 | TC2000007016.hg.1 |
| RP11-49K24.5 | 0.5703032 | ENST00000588843 | TC1800007242.hg.1 |
| ZWINT | 0.4332938 | NM_001005413 | TC1000010686.hg.1 |
| PDZRN3 | 0.37808138 | NM_001303139 | TC0300011550.hg.1 |
| MRPL37 | 0.55341005 | NM_016491 | TC0100008383.hg.1 |
| CDCA2 | 0.38652524 | NM_152562 | TC0800007065.hg.1 |
| C1orf116 | 0.26104504 | NM_001083924 | TC0100017116.hg.1 |
| PHF10 | 0.5350194 | NM_018288 | TC0600014374.hg.1 |
| ANTXR1 | 0.41467232 | NM_018153 | TC0200007908.hg.1 |
| GANC | 0.4332393 | NM_001301409 | TC1500010724.hg.1 |
| buney | 0.21448067 | buney.aAug10-unspliced | TC1200011096.hg.1 |
| fleecha | 0.5670341 | fleecha.aAug10-unspliced | TC2200007375.hg.1 |
| TOPBP1 | 0.5231038 | NM_007027 | TC0300012475.hg.1 |
| DDHD1 | 0.518078 | NM_001160147 | TC1400009198.hg.1 |
| CENPE | 0.36218575 | NM_001286734 | TC0400011477.hg.1 |
| steyswabu | 0.39305443 | steyswabu.aAug10-unspliced | TC0400012058.hg.1 |
| LRRC41 | 0.5029992 | NM_006369 | TC0100014050.hg.1 |
| chateebo | 0.46080166 | chateebo.aAug10-unspliced | TC0900011504.hg.1 |
| DHCR24 | 0.29359323 | NM_014762 | TC0100014276.hg.1 |
| C16orf47 | 0.61414534 | NM_207385 | TC1600010837.hg.1 |
| ANKH | 0.2953773 | NM_054027 | TC0500010169.hg.1 |
| SPECC1L | 0.4498078 | NM_001145468 | TC2200009232.hg.1 |
| SURF2 | 0.58516955 | ENST00000630633 | TSUnmapped00000645.hg.1 |
| ANKRD18A | 0.447803 | NM_147195 | TC0900010056.hg.1 |
| MRPL50P4 | 0.6036548 | ENST00000446432 | TC1000010721.hg.1 |
| tawkoyby | 0.46899974 | tawkoyby.aAug10-unspliced | TC1500008742.hg.1 |
| ploko | 0.39340684 | ploko.aAug10-unspliced | TC0700008118.hg.1 |
| PGC | 0.58806777 | NM_001166424 | TC0600011800.hg.1 |
| FTL | 0.49715453 | NM_000146 | TC1900008507.hg.1 |
| C1QTNF9B-AS1 | 0.46001562 | ENST00000626707 | TC1300008354.hg.1 |
| ANKRD16 | 0.4167979 | NM_001009941 | TC1000009685.hg.1 |
| GRTP1 | 0.4795477 | NM_001286732 | TC1300009898.hg.1 |
| DSG1-AS1 | 0.44299492 | NR_110788 | TC1800008391.hg.1 |
| RABGGTA | 0.49729913 | NM_004581 | TC1400008749.hg.1 |
| flawkerbu | 0.43726686 | flawkerbu.aAug10-unspliced | TC0300009525.hg.1 |
| HNRNPM | 0.56403583 | NM_001297418 | TC1900006896.hg.1 |
| SUPT16H | 0.49480245 | NM_007192 | TC1400008628.hg.1 |

| Gene Symbol | Log2 ratio | mRNA Accession | Probe Set ID |
|---------------|--------------------------|---------------------------|-------------------|
| | C42B-R vs. C42B Parental | | |
| zorflo | 0.3359878 | zorflo.aAug10-unspliced | TC0500011265.hg.1 |
| SLC43A1 | 0.38509548 | NM_001198810 | TC1100010893.hg.1 |
| SMCHD1 | 0.51081747 | NM_015295 | TC1800006487.hg.1 |
| AK5 | 0.30435124 | NM_012093 | TC0100008797.hg.1 |
| ALYREF | 0.56492716 | NM_005782 | TC1700012078.hg.1 |
| galerby | 0.45747203 | galerby.aAug10-unspliced | TC1100009108.hg.1 |
| wawplabu | 0.42711604 | wawplabu.aAug10-unspliced | TC0900011716.hg.1 |
| PSMC1P5 | 0.5066039 | ENST00000512850 | TC0500008258.hg.1 |
| RFX3 | 0.4212338 | NM_001282116 | TC0900009414.hg.1 |
| PCYT2 | 0.47380823 | NM_001184917 | TC1700012079.hg.1 |
| LIPT1 | 0.4635479 | NM_001204830 | TC0200016498.hg.1 |
| PCNA | 0.52286285 | NM_002592 | TC2000008279.hg.1 |
| UAP1L1 | 0.47232428 | NM_207309 | TC0900009259.hg.1 |
| ruyura | 0.37359488 | ruyura.aAug10-unspliced | TC0200011383.hg.1 |
| TIMM9P1 | 0.45987964 | ENST00000436122 | TC1000011053.hg.1 |
| POLR1D | 0.5329166 | NM_001206559 | TC1300006690.hg.1 |
| SPC25 | 0.38880345 | NM_020675 | TC0200014845.hg.1 |
| SYNGR2 | 0.395677 | NM_004710 | TC1700009040.hg.1 |
| GYS1 | 0.5489342 | NM_001161587 | TC1900011113.hg.1 |
| FO082796.1 | 0.6236664 | uc064xof.1 | TC0900009337.hg.1 |
| POLR3A | 0.50877184 | NM_007055 | TC1000011135.hg.1 |
| HMGCS2 | 0.40646768 | NM_001166107 | TC0100015476.hg.1 |
| HMGB2 | 0.4243033 | NM_001130688 | TC0400012432.hg.1 |
| SEC23IP | 0.5455924 | NM_007190 | TC1000009095.hg.1 |
| MND1 | 0.43333137 | NM_001253861 | TC0400009037.hg.1 |
| skorby | 0.5538103 | skorby.aAug10-unspliced | TC0100008386.hg.1 |
| MAPK6 | 0.58080816 | NM_002748 | TC1500010743.hg.1 |
| RP11-523H24.3 | 0.40864602 | ENST00000423023.2 | TC1300006475.hg.1 |
| NDUFS2 | 0.51578885 | NM_001166159 | TC0100010340.hg.1 |
| THUMPD2 | 0.58832085 | NM_025264 | TC0200012335.hg.1 |
| ZNF532 | 0.51026833 | NM_018181 | TC1800007440.hg.1 |
| RNF31 | 0.4634247 | NM_001310332 | TC1400010583.hg.1 |
| LMNB1 | 0.3586973 | NM_001198557 | TC0500008544.hg.1 |
| NCL | 0.43537042 | NM_005381 | TC0200016018.hg.1 |
| C16orf70 | 0.4627001 | NM_025187 | TC1600008144.hg.1 |
| ADPRHL1 | 0.49212754 | NM_138430 | TC1300009906.hg.1 |
| DTL | 0.5244777 | NM_001286229 | TC0100011512.hg.1 |
| FBXO9 | 0.5130895 | NM_012347 | TC0600008272.hg.1 |
| ARL4AP1 | 0.5907149 | OTTHUMT00000048210 | TC1000007746.hg.1 |
| ARHGDI1 | 0.45357972 | NM_001185077 | TC1700012076.hg.1 |
| CDCA8 | 0.40365022 | NM_001256875 | TC0100007841.hg.1 |
| RP11-428P16.2 | 0.4777028 | ENST00000394628 | TC1000008141.hg.1 |
| AFF3 | 0.48423874 | NM_001025108 | TC0200013616.hg.1 |
| SNX6 | 0.6242106 | NM_021249 | TC1400008913.hg.1 |
| SETDB2 | 0.46258482 | NM_001160308 | TC1300007164.hg.1 |
| BCHE | 0.37906632 | NM_000055 | TC0300013025.hg.1 |
| SCARF2 | 0.4983522 | NM_153334 | TC2200009316.hg.1 |
| bawwaw | 0.5893574 | bawwaw.aAug10-unspliced | TC1700009071.hg.1 |
| duspoyby | 0.4026641 | duspoyby.aAug10-unspliced | TC0300007163.hg.1 |
| CIRBP | 0.4957005 | NM_001280 | TC1900006524.hg.1 |
| leyreyby | 0.57445896 | leyreyby.aAug10-unspliced | TC1500010685.hg.1 |
| TMEM38B | 0.4955472 | NM_018112 | TC0900008318.hg.1 |
| gupla | 0.5598206 | gupla.aAug10-unspliced | TC1500009774.hg.1 |
| HIST2H2BF | 0.47186053 | NM_001024599 | TC0100015696.hg.1 |

| Gene Symbol | Log2 ratio | mRNA Accession | Probe Set ID |
|--------------|--------------------------|----------------------------|-------------------------|
| | C42B-R vs. C42B Parental | | |
| XPO6 | 0.55591255 | NM_001270940 | TC1600009849.hg.1 |
| plerdoby | 0.5506005 | plerdoby.aAug10-unspliced | TC1300007746.hg.1 |
| HIST1H2BJ | 0.31735694 | NM_021058 | TC0600011184.hg.1 |
| jorsno | 0.3005757 | jorsno.aAug10-unspliced | TC1600010317.hg.1 |
| TK1 | 0.38798255 | NM_003258 | TC1700011892.hg.1 |
| QARS | 0.4150439 | NM_001272073 | TC0300011050.hg.1 |
| DNAJA2 | 0.65016097 | NM_005880 | TC1600010179.hg.1 |
| ZNF511 | 0.50889003 | NM_145806 | TC1000012510.hg.1 |
| IDH3A | 0.4949564 | NM_005530 | TC1500010776.hg.1 |
| PRR5 | 0.51599747 | NM_001017528 | TC2200009283.hg.1 |
| MCM3 | 0.49204892 | NM_001270472 | TC0600012038.hg.1 |
| DBT | 0.53509057 | NM_001918 | TC0100015061.hg.1 |
| LRRC26 | 0.1923853 | NM_001013653 | TC0900012292.hg.1 |
| smeysmar | 0.5170932 | smeysmar.aAug10-unspliced | TC1700012031.hg.1 |
| SNTA1 | 0.54773855 | NM_003098 | TC2000008885.hg.1 |
| FBXO34 | 0.537406 | NM_017943 | TC1400007232.hg.1 |
| PWP2 | 0.461161 | NM_005049 | TC2100008538.hg.1 |
| SMARCC1 | 0.6105502 | NM_003074 | TC0300010990.hg.1 |
| ADPGK | 0.48194772 | NM_031284 | TC1500009973.hg.1 |
| PIK3R1 | 0.5444208 | NM_001242466 | TC0500007641.hg.1 |
| RP5-1087E8.2 | 0.47500125 | ENST00000438895 | TC0100017546.hg.1 |
| UBE2J1 | 0.44526744 | NM_016021 | TC0600012542.hg.1 |
| SMAD6 | 0.28079492 | NM_005585 | TC1500007619.hg.1 |
| DPP4 | 0.34977126 | NM_001935 | TC0200014764.hg.1 |
| DICER1 | 0.36728668 | NM_001195573 | TC1400010068.hg.1 |
| kawcheyby | 0.4223753 | kawcheyby.aAug10-unspliced | TC0800011977.hg.1 |
| zyblu | 0.3723442 | zyblu.aAug10-unspliced | TC1200012275.hg.1 |
| HIST1H2BK | 0.3872197 | NM_001312653 | TC0600011185.hg.1 |
| SLC25A11 | 0.47004586 | NM_001165417 | TC1700009538.hg.1 |
| PCBP2 | 0.54769474 | NM_001098620 | TC1200012636.hg.1 |
| bylee | 0.5562395 | bylee.aAug10-unspliced | TC2000007186.hg.1 |
| CKBP1 | 0.56606174 | OTTHUMT00000430620 | TC1600010176.hg.1 |
| DLST | 0.45699555 | NM_001244883 | TC1400007691.hg.1 |
| steesku | 0.5435216 | steesku.aAug10-unspliced | TC1800009032.hg.1 |
| noswy | 0.32253882 | noswy.aAug10-unspliced | TC1500008247.hg.1 |
| swujor | 0.6279067 | swujor.aAug10-unspliced | TC1900011045.hg.1 |
| roysweebu | 0.51977044 | roysweebu.aAug10-unspliced | TC0500008818.hg.1 |
| SURF6 | 0.55545616 | ENST00000629980 | TSUnmapped00000280.hg.1 |
| GSR | 0.40518555 | NM_000637 | TC0800010034.hg.1 |
| gapybu | 0.4904637 | gapybu.aAug10-unspliced | TC0100009931.hg.1 |
| SRSF5 | 0.4984582 | NM_001039465 | TC1400007562.hg.1 |
| FAM111B | 0.4830927 | NM_001142703 | TC1100007727.hg.1 |
| TRUB2 | 0.5179548 | NM_015679 | TC0900011634.hg.1 |
| HIST1H2AJ | 0.41969615 | NM_021066 | TC0600011225.hg.1 |
| SEC24B | 0.46943778 | NM_001042734 | TC0400008376.hg.1 |
| PHF14 | 0.5191417 | NM_014660 | TC0700006715.hg.1 |
| SNAP23 | 0.60475904 | NM_003825 | TC1500007034.hg.1 |
| jusky | 0.38240618 | jusky.aAug10-unspliced | TC1800007441.hg.1 |
| TLE3 | 0.4281667 | NM_001105192 | TC1500009904.hg.1 |
| CDC25C | 0.46098262 | NM_001287582 | TC0500012166.hg.1 |
| HIST1H2AH | 0.5278977 | NM_080596 | TC0600014085.hg.1 |
| ZNF625-ZNF20 | 0.4646631 | NR_037802 | TC1900011878.hg.1 |
| CDC6 | 0.50786716 | NM_001254 | TC1700007790.hg.1 |
| HMG2P5 | 0.5414811 | OTTHUMT00000417269 | TC1500006692.hg.1 |

| Gene Symbol | Log2 ratio | mRNA Accession | Probe Set ID |
|---------------|--------------------------|--------------------------|------------------------------|
| | C42B-R vs. C42B Parental | | |
| teysee | 0.580512 | teysee.aAug10-unspliced | TC1900008413.hg.1 |
| SCAPER | 0.61952037 | NM_001145923 | TC1500010097.hg.1 |
| AURKB | 0.47502816 | NM_001256834 | TC1700009679.hg.1 |
| ZNF441 | 0.54207057 | NM_152355 | TC1900007045.hg.1 |
| zeejo | 0.521322 | zeejo.aAug10-unspliced | TC0600007779.hg.1 |
| TRIM37 | 0.5006215 | NM_001005207 | TC1700011273.hg.1 |
| COG3 | 0.49696615 | NM_031431 | TC1300007070.hg.1 |
| berrer | 0.45925748 | berrer.aAug10 | TC1500008694.hg.1 |
| DNAL1 | 0.436959 | NM_001201366 | TC1400007653.hg.1 |
| PDCD6IP | 0.52879274 | NM_001162429 | TC0300007004.hg.1 |
| TMEM42 | 0.67257625 | NM_144638 | TC0300007225.hg.1 |
| fernor | 0.5464786 | fernor.aAug10-unspliced | TC1600008535.hg.1 |
| PLCL2 | 0.54020005 | NM_001144382 | TC0300006758.hg.1 |
| METTL25 | 0.48297748 | NM_032230 | TC1200008318.hg.1 |
| NMU | 0.5263089 | NM_001292045 | TC0400010750.hg.1 |
| TXNDC16 | 0.45140904 | NM_001160047 | TC1400009184.hg.1 |
| YIPF1 | 0.5255118 | NM_018982 | TC0100014245.hg.1 |
| H2AFX | 0.41791686 | NM_002105 | TC1100012513.hg.1 |
| RP11-290L1.4 | 0.3945414 | ENST00000552477 | TC1200008236.hg.1 |
| TSGA10 | 0.44362015 | NM_025244 | TC0200013602.hg.1 |
| DDX39A | 0.40208858 | NM_005804 | TC1900009820.hg.1 |
| TEX30 | 0.5548091 | NM_001286775 | TC1300009673.hg.1 |
| TPR | 0.50444764 | NM_003292 | TC0100016709.hg.1 |
| RHPN2 | 0.52777475 | NM_033103 | TC1900010375.hg.1 |
| RP11-326A19.5 | 0.20085482 | ENST00000563131 | TC1500010380.hg.1 |
| STK36 | 0.52710193 | NM_001243313 | TC0200010806.hg.1 |
| ACOX2 | 0.4578164 | NM_003500 | TC0300011309.hg.1 |
| PAIP1 | 0.5039823 | NM_006451 | TC0500010643.hg.1 |
| JAG2 | 0.43844858 | NM_002226 | TC1400010796.hg.1 |
| CCBL2 | 0.6473662 | NM_001008661 | TC0100014848.hg.1 |
| KTN1 | 0.49453494 | NM_001079521 | TC1400007244.hg.1 |
| ZNF844 | 0.4110064 | NM_001136501 | TC1900007061.hg.1 |
| TRIP13 | 0.49076706 | NM_001166260 | TC0500006472.hg.1 |
| KIF18A | 0.33210176 | NM_031217 | TC1100010418.hg.1 |
| OXA1L | 0.4004507 | NM_005015 | TC1400006656.hg.1 |
| C17orf62 | 0.5676897 | NM_001033046 | TC1700012126.hg.1 |
| LOC389831 | 0.45440343 | NM_001242480 | TCUn_GL000195v100006435.hg.1 |
| kawklar | 0.4641785 | kawklar.aAug10-unspliced | TC1800006488.hg.1 |
| gulybu | 0.3822165 | gulybu.aAug10-unspliced | TC0100009757.hg.1 |
| YLPM1 | 0.5396027 | NM_019589 | TC1400010627.hg.1 |
| SYNGAP1 | 0.5085994 | NM_006772 | TC0600014111.hg.1 |
| GLUDP5 | 0.5238646 | ENST00000414627 | TC1000010230.hg.1 |
| DARS2 | 0.538422 | NM_018122 | TC0100010661.hg.1 |
| FAM21A | 0.4975419 | NM_001005751 | TC1000007603.hg.1 |
| swyfabu | 0.3891656 | swyfabu.aAug10-unspliced | TC1300006863.hg.1 |
| swybubo | 0.6070396 | swybubo.aAug10-unspliced | TC0400008272.hg.1 |
| FAAH | 0.31280243 | NM_001441 | TC0100008158.hg.1 |
| DNM1L | 0.45855513 | NM_001278463 | TC1200007277.hg.1 |
| PEG3-AS1 | 0.53737444 | NR_023847 | TC1900008972.hg.1 |
| SRSF2 | 0.4972668 | NM_001195427 | TC1700011820.hg.1 |
| steeleyby | 0.60206133 | steeleyby.aAug10 | TC1000007666.hg.1 |
| steyfar | 0.6186358 | steyfar.aAug10-unspliced | TC0X00009555.hg.1 |
| ACSS1 | 0.49296528 | NM_001252675 | TC2000008722.hg.1 |
| CYB5A | 0.626406 | NM_001190807 | TC1800009029.hg.1 |

| Gene Symbol | Log2 ratio | mRNA Accession | Probe Set ID |
|-------------------|--------------------------|----------------------------|-------------------------|
| | C42B-R vs. C42B Parental | | |
| ATG4D | 0.5405698 | NM_001281504 | TC1900006989.hg.1 |
| RP11-10G15.4 | 0.54678494 | ENST00000481228 | TC0300008527.hg.1 |
| CBS | 0.54003733 | NM_000071 | TC2100007491.hg.1 |
| PIGB | 0.5241317 | NM_004855 | TC1500007303.hg.1 |
| WNK3 | 0.47971934 | NM_001002838 | TC0X00009778.hg.1 |
| PCBP2P1 | 0.6052516 | OTTHUMT00000141397 | TC2100008163.hg.1 |
| KIF15 | 0.40996036 | ENST00000625939 | TSUnmapped00000127.hg.1 |
| BDH1 | 0.38979703 | NM_004051 | TC0300013751.hg.1 |
| snawgley | 0.37326625 | snawgley.aAug10-unspliced | TC1500009186.hg.1 |
| LOC101060389 | 0.47515857 | ENST00000620683 | TC1700012242.hg.1 |
| WDR73 | 0.5780801 | NM_032856 | TC1500010290.hg.1 |
| ECHS1 | 0.5037588 | NM_004092 | TC1000012399.hg.1 |
| AGO4 | 0.4595127 | NM_017629 | TC0100007784.hg.1 |
| smeedybu | 0.4887119 | smeedybu.aAug10-unspliced | TC0200011253.hg.1 |
| GAS2L3 | 0.39045474 | NM_001303130 | TC1200008597.hg.1 |
| HECTD2 | 0.46758094 | NM_001284274 | TC1000008435.hg.1 |
| SMIM4 | 0.68669504 | NM_001124767 | TC0300007485.hg.1 |
| smaspy | 0.5855923 | smaspy.aAug10-unspliced | TC1600009831.hg.1 |
| leeterbu | 0.31373262 | leeterbu.aAug10-unspliced | TC1800006592.hg.1 |
| wawbleeby | 0.5481077 | wawbleeby.aAug10-unspliced | TC0700012626.hg.1 |
| ZNF30 | 0.48478946 | NM_001099437 | TC1900007826.hg.1 |
| boyboyby | 0.48922414 | boyboyby.aAug10-unspliced | TC1400009941.hg.1 |
| PPP1CA | 0.54464936 | NM_001008709 | TC1100011331.hg.1 |
| PTER | 0.61623704 | NM_001001484 | TC1000006880.hg.1 |
| SRP14 | 0.59209675 | NM_001309434 | TC1500009079.hg.1 |
| H2BFS | 0.44539672 | OTTHUMT00000195634 | TC2100007316.hg.1 |
| rogoy | 0.6814599 | rogoy.aAug10-unspliced | TC0700013278.hg.1 |
| SLC25A6P2 | 0.50913954 | ENST00000497974 | TC0900006921.hg.1 |
| SSX2IP | 0.57008034 | NM_001166293 | TC0100014762.hg.1 |
| GNMT | 0.34421772 | NM_018960 | TC0600008062.hg.1 |
| PABPN1 | 0.55949104 | NM_004643 | TC1400010576.hg.1 |
| IMPDH2 | 0.4094581 | NM_000884 | TC0300011047.hg.1 |
| TCONS_I2_00003977 | 0.48355672 | hsa_circ_0005184 | TC1000007552.hg.1 |
| BRI3 | 0.44571802 | NM_001159491 | TC0700013405.hg.1 |
| GLRX2 | 0.43001187 | NM_001243399 | TC0100016789.hg.1 |
| hirimu | 0.47269163 | hirimu.aAug10-unspliced | TC1000008071.hg.1 |
| ZBTB10 | 0.5351074 | NM_001105539 | TC0800008062.hg.1 |
| ZFP30 | 0.6024922 | NM_014898 | TC1900011935.hg.1 |
| RTKN2 | 0.39857036 | NM_001282941 | TC1000010758.hg.1 |
| kyspabu | 0.31103367 | kyspabu.aAug10-unspliced | TC0600011636.hg.1 |
| gleyjyby | 0.3509167 | gleyjyby.aAug10-unspliced | TC1200011372.hg.1 |
| LYPLA1P3 | 0.5955728 | ENST00000402650 | TC0600008481.hg.1 |
| FBXW5 | 0.4641971 | NM_018998 | TC0900012021.hg.1 |
| SLC25A5 | 0.51234466 | NM_001152 | TC0X00008249.hg.1 |
| TRIM49D2 | 0.5248753 | NM_001105522 | TC1100011917.hg.1 |
| snarnerbu | 0.46307427 | snarnerbu.aAug10-unspliced | TC0100014779.hg.1 |
| SENP6 | 0.6172269 | NM_001100409 | TC0600008562.hg.1 |
| PANK2 | 0.553953 | NM_024960 | TC2000009885.hg.1 |
| EXO1 | 0.42413324 | NM_003686 | TC0100012172.hg.1 |
| vojaw | 0.47500482 | vojaw.aAug10-unspliced | TC0600011558.hg.1 |
| CBLN2 | 0.6803577 | NM_182511 | TC1800009309.hg.1 |
| AFF4 | 0.6317016 | NM_014423 | TC0500012032.hg.1 |
| PKM | 0.54437214 | NM_001206796 | TC1500009952.hg.1 |
| MIR3975 | 0.40275946 | NR_039771 | TC1800007081.hg.1 |

| Gene Symbol | Log2 ratio | mRNA Accession | Probe Set ID |
|-------------|--------------------------|---------------------------|-------------------|
| | C42B-R vs. C42B Parental | | |
| gerdaw | 0.6541237 | gerdaw.aAug10-unspliced | TC1500008830.hg.1 |
| PTPN20 | 0.5046494 | NM_001042357 | TC1000007533.hg.1 |
| plervubu | 0.36976948 | plervubu.aAug10-unspliced | TC1700011739.hg.1 |
| TAF1A | 0.5528937 | NM_001201536 | TC0100017436.hg.1 |
| SLC9A3R2 | 0.29307893 | NM_001130012 | TC1600006585.hg.1 |
| gaspoy | 0.61143446 | gaspoy.aAug10-unspliced | TC1500009187.hg.1 |
| CIT | 0.5678157 | NM_001206999 | TC1200012143.hg.1 |

Table S2. Significantly deregulated genes found in docetaxel-resistant LNCaP^R cells compared to the matched parental LNCaP cell line.

| Gene Symbol | Log2 ratio | mRNA Accession | Probe Set ID |
|-------------|----------------------------|----------------------------|-------------------------|
| | LNCaP-R vs. LNCaP Parental | | |
| PXN | 3.56443 | NM_001080855 | TC1200012153.hg.1 |
| blafleybu | 3.1122556 | blafleybu.aAug10-unspliced | TC1100007077.hg.1 |
| PIK3R3 | 5.406014 | NM_001114172 | TC0100014040.hg.1 |
| BLNK | 3.5023136 | NM_001114094 | TC1000011515.hg.1 |
| TM4SF1 | 3.545013 | NM_014220 | TC0300012773.hg.1 |
| TM7SF3 | 2.4072413 | NM_016551 | TC1200010201.hg.1 |
| DUSP16 | 2.95504 | NM_030640 | TC1200009967.hg.1 |
| ZNF560 | 2.5174682 | NM_152476 | TC1900009584.hg.1 |
| DUSP16 | 2.679847 | ENST00000629698 | TSUnmapped00000353.hg.1 |
| ACRV1 | 2.395064 | NM_001612 | TC1100012712.hg.1 |
| ATP2B4 | 2.9942753 | NM_001001396 | TC0100011267.hg.1 |
| VCY1B | 2.769458 | ENST00000250823 | TC0Y00006648.hg.1 |
| DHRS7 | 2.935409 | NM_016029 | TC1400009337.hg.1 |
| SCD5 | 2.4950082 | NM_001037582 | TC0400011180.hg.1 |
| PCDHB13 | 4.2347374 | NM_018933 | TC0500008884.hg.1 |
| FAM198B | 5.6217136 | NM_001031700 | TC0400012245.hg.1 |
| DUSP16 | 3.1547987 | ENST00000626461 | TSUnmapped00000088.hg.1 |
| C1QTNF3 | 4.827522 | NM_030945 | TC0500013298.hg.1 |
| TSPAN1 | 3.1269867 | NM_005727 | TC0100008145.hg.1 |
| C8orf34 | 3.3590832 | NM_001195639 | TC0800007888.hg.1 |
| NBEAP1 | 2.6210454 | NR_027992 | TC1500008627.hg.1 |
| CCDC159 | 2.8617265 | NM_001080503 | TC1900011664.hg.1 |
| SNORD116-1 | 3.182337 | NR_003316 | TC1500006573.hg.1 |
| ZNF98 | 2.962111 | NM_001098626 | TC1900011920.hg.1 |
| FAT1 | 3.6916504 | NM_005245 | TC0400012670.hg.1 |
| wawvobo | 2.8540244 | wawvobo.aAug10-unspliced | TC0400010009.hg.1 |
| GSTA1 | 2.3901138 | NM_145740 | TC0600012053.hg.1 |
| RTN1 | 3.6280313 | NM_021136 | TC1400009329.hg.1 |
| SLC44A4 | 3.9985197 | ENST00000229729 | TC0600011464.hg.1 |
| KDM5B | 2.466685 | NM_006618 | TC0100016963.hg.1 |
| CYP3A5 | 4.202087 | NM_000777 | TC0700011953.hg.1 |
| SAT1 | 3.286477 | NM_002970 | TC0X00006799.hg.1 |
| DUSP16 | 2.8812482 | ENST00000628303 | TSUnmapped00000374.hg.1 |
| goggerbu | 3.1548991 | goggerbu.aAug10-unspliced | TC0300009346.hg.1 |
| SLFN5 | 3.8060744 | NM_144975 | TC1700007585.hg.1 |
| TMEFF2 | 4.331773 | NM_001305134 | TC0200015266.hg.1 |
| APLP2 | 3.5663965 | NM_001142276 | TC1100009521.hg.1 |
| ADAM7 | 3.7644048 | NM_003817 | TC0800007043.hg.1 |
| goyfloby | 3.8766327 | goyfloby.bAug10 | TC0700011263.hg.1 |
| TNFSF15 | 4.8133583 | NM_001204344 | TC0900011300.hg.1 |
| noychorby | 2.916827 | noychorby.aAug10-unspliced | TC0700007194.hg.1 |

| Gene Symbol | Log2 ratio | mRNA Accession | Probe Set ID |
|---------------|----------------------------|-----------------------------|-------------------|
| | LNCaP-R vs. LNCaP Parental | | |
| NOSTRIN | 4.1041965 | NM_001171631 | TC0200009902.hg.1 |
| TRIM38 | 6.0442314 | NM_006355 | TC0600007257.hg.1 |
| MPP6 | 2.543276 | NM_001303037 | TC0700006945.hg.1 |
| CAMKK2 | 3.507546 | NM_001270485 | TC1200012199.hg.1 |
| GPD2 | 3.095948 | NM_000408 | TC0200016548.hg.1 |
| RAB25 | 3.190944 | NM_020387 | TC0100010149.hg.1 |
| smoplobu | 2.6784763 | smoplobu.aAug10-unspliced | TC0900009968.hg.1 |
| rekimu | 4.141984 | rekimu.aAug10-unspliced | TC0700011707.hg.1 |
| RP11-507F16.1 | 5.618927 | ENST00000529684 | TC1100012808.hg.1 |
| KLK3 | 4.8988104 | NM_001030047 | TC1900008607.hg.1 |
| SLC25A40 | 3.9717932 | NM_018843 | TC0700011710.hg.1 |
| ARHGEF38 | 3.6656058 | NM_001242729 | TC0400012829.hg.1 |
| DIO1 | 4.1902857 | NM_000792 | TC0100008366.hg.1 |
| AZGP1 | 2.8848197 | NM_001185 | TC0700011962.hg.1 |
| PLK2 | 5.4971914 | NM_001252226 | TC0500010835.hg.1 |
| NETO1 | 3.4014995 | NM_001201465 | TC1800009011.hg.1 |
| BMPR1B | 5.578164 | NM_001203 | TC0400008183.hg.1 |
| DAZAP2 | 3.2398264 | NM_001136264 | TC1200012629.hg.1 |
| RYR2 | 3.2929828 | NM_001035 | TC0100012113.hg.1 |
| AAK1 | 3.058343 | NM_014911 | TC0200012961.hg.1 |
| MDM2 | 3.3790278 | NM_001145337 | TC1200008116.hg.1 |
| CDK19 | 3.7037866 | NM_001300960 | TC0600012839.hg.1 |
| GDF15 | 3.70373 | NM_004864 | TC1900007384.hg.1 |
| TP53INP1 | 3.9261022 | NM_001135733 | TC0800011150.hg.1 |
| snervobo | 4.52474 | snervobo.aAug10-unspliced | TC0400008186.hg.1 |
| LOC731631 | 5.7967405 | LOC731631.aAug10-unspliced | TC0700011175.hg.1 |
| PCDHB5 | 5.765707 | NM_015669 | TC0500013241.hg.1 |
| slersweebu | 19,323046 | slersweebu.aAug10-unspliced | TC0400009613.hg.1 |
| GLS2 | 7.000437 | NM_001280796 | TC1200010921.hg.1 |
| TRPM8 | 4.079079 | NM_024080 | TC0200011147.hg.1 |
| PALMD | 4.425948 | NM_017734 | TC0100009183.hg.1 |
| SH3BGR1 | 7.9054246 | NM_003022 | TC0X00007744.hg.1 |
| slukeebu | 7.0748277 | slukeebu.aAug10-unspliced | TC0300013147.hg.1 |
| GULP1 | 5.202367 | NM_001252668 | TC0200010236.hg.1 |
| ACOX2 | 5.0355625 | NM_003500 | TC0300011309.hg.1 |
| C1QTNF3-AMACR | 8.091464 | NR_037951 | TC0500013296.hg.1 |
| ANK3 | 4.1974845 | NM_001149 | TC1000010727.hg.1 |
| PCDHB14 | 5.4201503 | NM_018934 | TC0500013247.hg.1 |
| skargluby | 4.1027513 | skargluby.aAug10-unspliced | TC0600011669.hg.1 |
| BTG2 | 4.8146367 | NM_006763 | TC0100011253.hg.1 |
| ZDHHC15 | 6.922595 | NM_001146256 | TC0X00010107.hg.1 |
| NLGN4X | 8.998397 | NM_001282145 | TC0X00008989.hg.1 |
| LCP1 | 6.141706 | NM_002298 | TC1300008840.hg.1 |
| CDKN1A | 9.6522665 | NM_000389 | TC0600007847.hg.1 |
| CLDN8 | 5.451458 | NM_199328 | TC2100007881.hg.1 |
| LOC650226 | 26.9515 | NR_029420 | TC0700011180.hg.1 |
| AMACR | 8.110192 | NM_001167595 | TC0500013297.hg.1 |
| GLYATL1 | 6.244707 | NM_001220494 | TC1100013009.hg.1 |
| nona | 8.164134 | nona.aAug10-unspliced | TC0700011177.hg.1 |
| RP11-310H4.6 | 14.055634 | ENST00000432235 | TC0700011150.hg.1 |
| ADAMTS1 | 8.51847 | NM_006988 | TC2100007821.hg.1 |
| ROR1 | 13.5492325 | NM_001083592 | TC0100008594.hg.1 |
| SESN3 | 13.418033 | NM_001271594 | TC1100012019.hg.1 |
| RP11-945A11.1 | 6.5589886 | ENST00000534068.1 | TC1100007088.hg.1 |

| Gene Symbol | Log ₂ ratio | mRNA Accession | Probe Set ID |
|-------------|----------------------------|-----------------------------|-------------------|
| | LNCaP-R vs. LNCaP Parental | | |
| SYT4 | 26.85892 | NM_020783 | TC1800008550.hg.1 |
| OR51E1 | 58.01366 | NM_152430 | TC1100006663.hg.1 |
| ABCB1 | 10.353241 | NM_000927 | TC0700011706.hg.1 |
| FIRRE | 17.908964 | NR_026975 | TC0X00010826.hg.1 |
| skoyplorby | 42.785618 | skoyplorby.aAug10-unspliced | TC0400012717.hg.1 |
| MAGEC2 | 57.19087 | NM_016249 | TC0X00011001.hg.1 |
| RUNDC3B | 174.82712 | NM_001134405 | TC0700008261.hg.1 |
| TNFSF10 | 392,64548 | NM_001190942 | TC0300013146.hg.1 |
| PTGFR | 0.04011484 | NM_000959 | TC0100008812.hg.1 |
| GNAI1 | 0.024177328 | NM_001256414 | TC0700008181.hg.1 |
| DEPDC1 | 0.040950254 | NM_001114120 | TC0100014543.hg.1 |
| ADAMTSL3 | 0.07627707 | NM_001301110 | TC1500008127.hg.1 |
| BEND4 | 0.14824328 | NM_001159547 | TC0400010553.hg.1 |
| PCDH7 | 0.035351582 | NM_001173523 | TC0400007169.hg.1 |
| SLC22A3 | 0.08989562 | NM_021977 | TC0600010078.hg.1 |
| EFNA5 | 0.101759985 | NM_001962 | TC0500011648.hg.1 |
| PEG3 | 0.11878157 | NM_001146184 | TC1900011542.hg.1 |
| TMEM45A | 0.15066868 | NM_018004 | TC0300008148.hg.1 |
| BLMH | 0.22832285 | NM_000386 | TC1700010274.hg.1 |
| HENMT1 | 0.17933251 | NM_001102592 | TC0100015171.hg.1 |
| ANKRD18A | 0.14581032 | NM_147195 | TC0900010056.hg.1 |
| LRRN1 | 0.106709786 | NM_020873 | TC0300006465.hg.1 |
| LPAL2 | 0.17920749 | NR_028092 | TC0600013780.hg.1 |
| POT1 | 0.32487112 | NM_001042594 | TC0700012479.hg.1 |
| ATP1B1 | 0.13123657 | NM_001677 | TC0100010543.hg.1 |
| FAM72B | 0.23223388 | NM_001100910 | TC0100015509.hg.1 |
| chysloby | 0.17447013 | chysloby.aAug10-unspliced | TC0500011649.hg.1 |
| NMU | 0.21303496 | NM_001292045 | TC0400010750.hg.1 |
| RCN3 | 0.24691214 | NM_020650 | TC1900008544.hg.1 |
| KCNQ5 | 0.20526414 | NM_001160130 | TC0600008509.hg.1 |
| HIST1H2BG | 0.21723571 | NM_003518 | TC0600011136.hg.1 |
| STXBP5L | 0.2826764 | NM_001308330 | TC0300008524.hg.1 |
| MAOA | 0.31229696 | NM_000240 | TC0X00007053.hg.1 |
| SEMA6A | 0.15992631 | NM_001300780 | TC0500011775.hg.1 |
| LIN7A | 0.24104224 | NM_004664 | TC1200011385.hg.1 |
| MAP1B | 0.07084352 | NM_005909 | TC0500007738.hg.1 |
| GBE1 | 0.30894694 | NM_000158 | TC0300011651.hg.1 |
| UGT2B15 | 0.1385326 | NM_001076 | TC0400012924.hg.1 |
| KIF20B | 0.31401816 | NM_001284259 | TC1000008406.hg.1 |
| MYNN | 0.24139714 | NM_001185118 | TC0300009451.hg.1 |
| DSEL | 0.27489787 | NM_032160 | TC1800008952.hg.1 |
| SH3RF1 | 0.2832188 | NM_020870 | TC0400012378.hg.1 |
| skersworby | 0.24907549 | skersworby.aAug10-unspliced | TC0300008083.hg.1 |
| RDH10 | 0.15124539 | NM_172037 | TC0800007957.hg.1 |
| FAM72D | 0.317396 | NM_207418 | TC0100009723.hg.1 |
| HIST1H1B | 0.21291079 | NM_005322 | TC0600011232.hg.1 |
| forskarbu | 0.28344628 | forskarbu.aAug10-unspliced | TC0800010055.hg.1 |
| DGKH | 0.31261846 | NM_001204504 | TC1300006987.hg.1 |
| CDH26 | 0.1793008 | NM_021810 | TC2000007943.hg.1 |
| FAM72A | 0.28322527 | NM_001123168 | TC0100017094.hg.1 |
| zorreybo | 0.27864584 | zorreybo.aAug10-unspliced | TC0100008257.hg.1 |
| MIR548T | 0.24622196 | NR_036093 | TC0400009324.hg.1 |
| FAM213A | 0.2520724 | NM_001243778 | TC1000008234.hg.1 |
| UGT2B17 | 0.17604344 | NM_001077 | TC0400012923.hg.1 |

| Gene Symbol | Log2 ratio | mRNA Accession | Probe Set ID |
|-------------|----------------------------|--------------------------|-------------------|
| | LNCaP-R vs. LNCaP Parental | | |
| XAGE1B | 0.31227544 | NM_001097594 | TC0X00007285.hg.1 |
| ploroby | 0.24817838 | ploroby.aAug10-unspliced | TC1000006474.hg.1 |
| CENPJ | 0.38357082 | NM_018451 | TC1300008371.hg.1 |
