

## Supplementary materials

Figure S1. Sample selection flow chart.

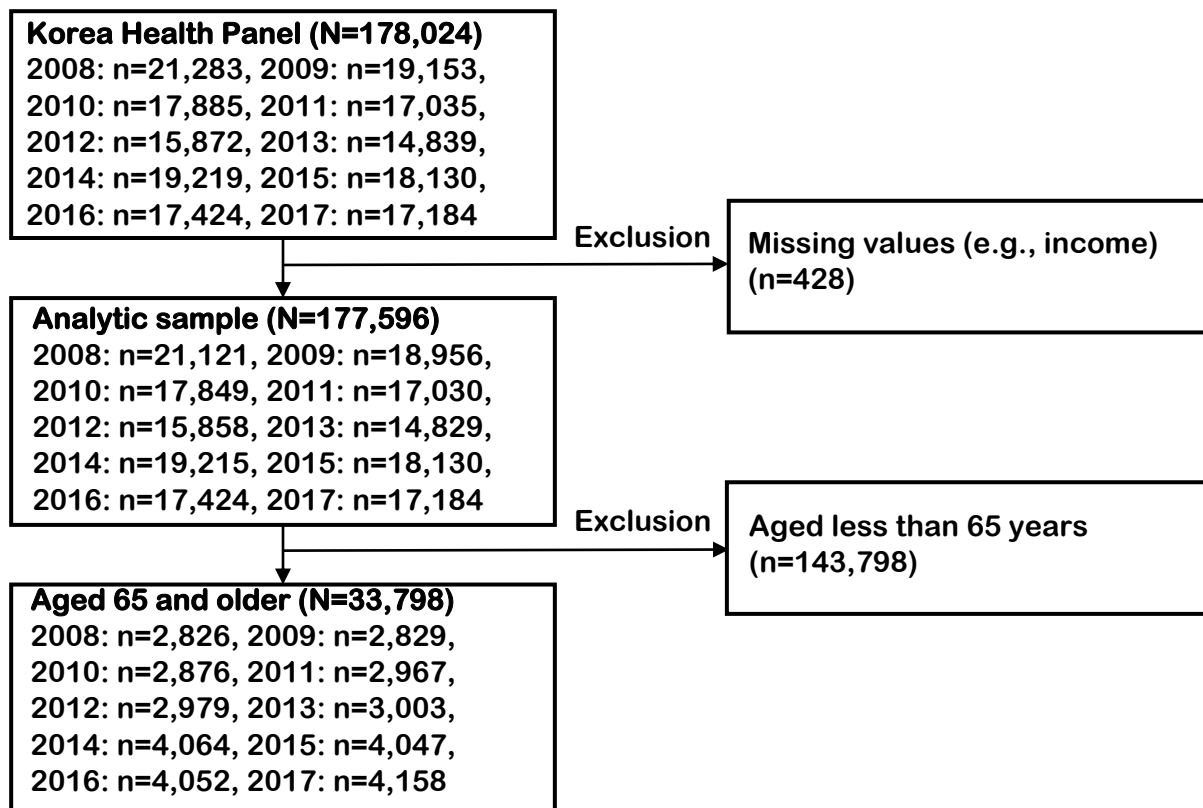
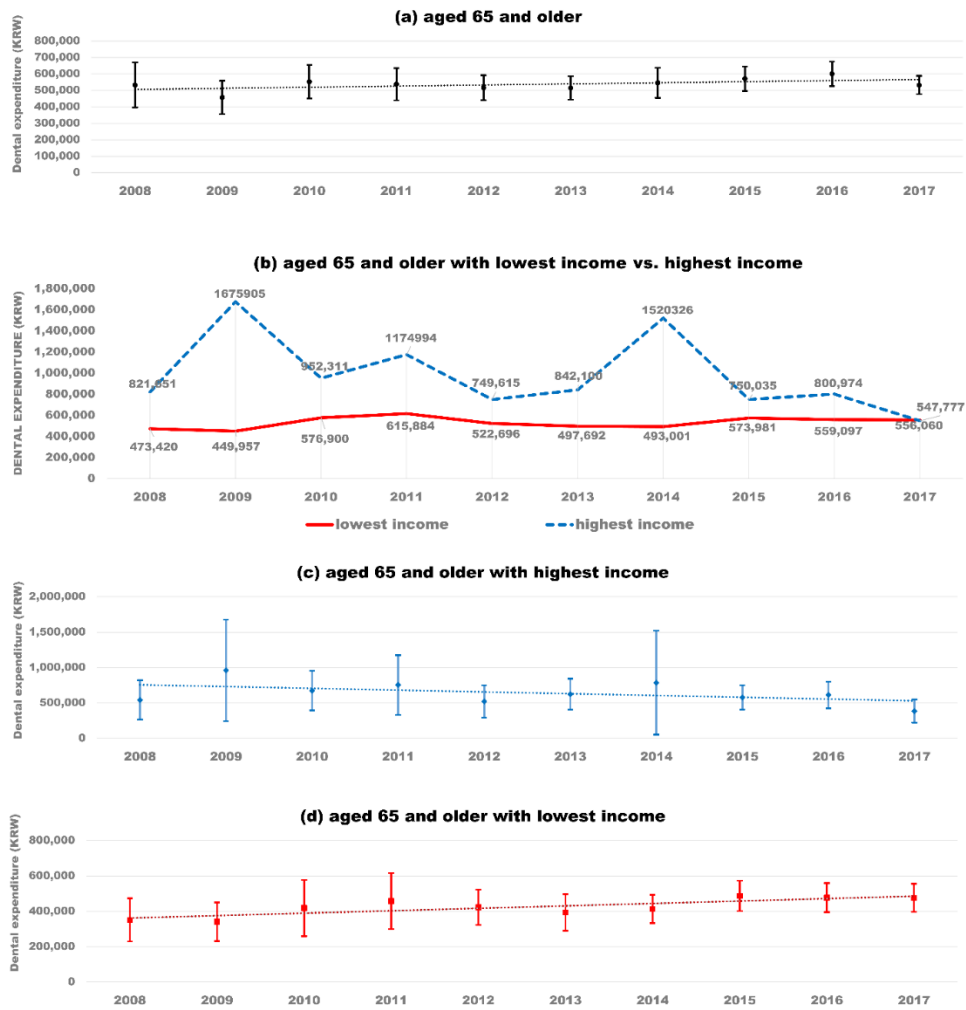


Figure S2. Dental expenditure for older adults in South Korea, 2008-2018



**Table S1.** Lincom estimates for the multi-group comparison.

Measure of interest	Model parameter	2011 <sup>b</sup>		
		Point estimate	P-value	95% CI
<b>Between-group comparison<sup>a</sup></b>				
Pre-intervention trend: control	$\beta_1$	65,322	0.55	-167,259 to 297,903
Pre-intervention trend: treatment	$\beta_5 + \beta_1$	33,460	0.03	4,202 to 62,718
Difference pre-intervention: treatment versus control	$\beta_5$	-31,863	0.77	-266,277 to 202,552
Difference immediately following the intervention: treatment versus control	$\beta_6$	126,126	0.62	-419,535 to 671,786
Post-intervention trend: control	$\beta_1 + \beta_3$	-34,700	0.10	-77,400 to 8,143
Post-intervention trend: treatment	$\beta_1 + \beta_3 + \beta_5 + \beta_7$	9,280	0.15	-3,800 to 22,400
Difference post-intervention: treatment versus control	$\beta_5 + \beta_7$	43,900	0.05	-819 to 88,700
Difference pre- versus post-intervention: control	$\beta_3$	-99,974	0.37	332,115 to 132,168
Difference pre- versus post-intervention: treatment	$\beta_3 + \beta_7$	24,180	0.17	59,779 to 11,420
Difference pre- versus post-intervention: treatment versus control	$\beta_7$	75,794	0.50	-159,061 to 310,650

<sup>a</sup> aged 65 years and older with lowest income (treatment) vs. highest income (control).

<sup>b</sup> pre-intervention vs. post-intervention with placebo start in 2011 year.

**Table S2.** Cumby-Huizinga test for autocorrelation.

lags	Chi <sup>2</sup>	df	p-value	lag	Ch <sup>2</sup>	dh	p-value
<b>1-1</b>	<b>5.199</b>	<b>1</b>	<b>0.0226</b>	<b>1</b>	<b>5.199</b>	<b>1</b>	<b>0.0226</b>
1-2	6.961	2	0.0308	2	3.665	1	0.0556
1-3	6.962	3	0.0731	3	0.997	1	0.3179
1-4	7.09	4	0.1312	4	0.937	1	0.333

actest, lags (4)

\* Eigenvalues adjusted to ensure a positive semidefinite matrix

H0: variable is MA process up to order q

HA: serial correlation present at specified lags >q

Test allows predetermined regressors/instruments

Test requires conditional homoscedasticity

H0: q = 0 (serially uncorrelated) | H0: q = specified lag-1

HA: s.c. present at range specified | HA: s.c. present at lag specified