

Integrin $\alpha 2\beta 1$ Represents a Prognostic and Predictive Biomarker in Primary Ovarian Cancer

Katharina Dötzer, Friederike Schlüter, Franz Edler von Koch, Christine E. Brambs, Sabine Anthuber, Sergio Frangini, Bastian Czogalla, Alexander Burges, Jens Werner, Sven Mahner and Barbara Mayer

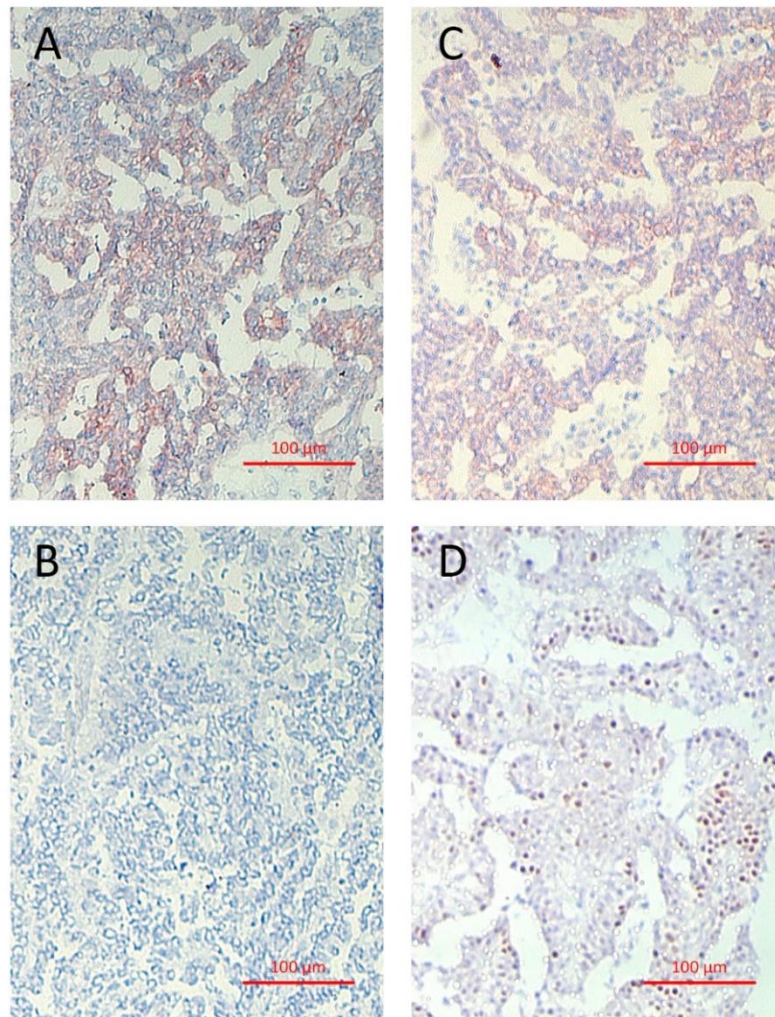


Figure S1. Immunohistochemical Stainings. (A) Patient 5197, integrin $\alpha 2\beta 1$, 90% positive cancer cells. (B) Patient 5325, integrin $\alpha 2\beta 1$, negative. (C) Patient 5197, EGFR, >90% positive cancer cells. (D) Patient 5197, ER α , 30% positive cancer cells.